



# Parsonage Place

Parsonage Place is an attractive collection of 1, 2, 3 and 4-bedroom homes situated in the historic village of Otham, surrounded by picturesque countryside just outside Maidstone.



THE  
ARTISAN  
COLLECTION

**Bellway**



# Find the perfect balance in ancient Otham

Close to charming history, idyllic countryside and the spectacular city

The ancient village of Otham is a beautiful location that offers all the peace of village life, with the hustle and bustle of Kent's thriving county town minutes away when you need it. Maidstone town centre provides all the essentials such as supermarkets, banks, pharmacies and other services, but it also has much more to offer. Its historic streets are lined with a fantastic selection of shops, ranging from unique independent boutiques to well-known high-street brands. There is also a choice of cafés, pubs and restaurants to enjoy, which together make socialising a real pleasure.

In an area with such rich heritage, there are plenty of historic landmarks to explore, such as Stoneacre manor house and gardens or the stunning Leeds Castle. For something more energetic, have some family fun in the treetops at Go Ape, or let off some steam at Mote Park with its lakeside playgrounds, BMX track, skatepark and water sports centre.

Keeping fit is also made easy at Maidstone Leisure Centre, with its gym, fitness classes, swimming pool and sports hall, all just a nine-minute drive away. You can also enjoy a round of golf at a choice of clubs in the local area.

If the great outdoors is your thing, you'll be pleased to hear that Parsonage Place puts you in the heart of the countryside. There are numerous footpaths that start from Otham and lead you on wonderful walks past mature woodland and through open fields, taking in spectacular views along the way.

Education is also well taken care of, with a range of local schools from primary right through to sixth form, including grammar schools, many within 10 minutes by car. There are also options for higher education within easy reach, providing access to apprenticeships, degrees and other training courses.

For travelling further afield, the nearby M20 provides excellent access to London, and the M25. This puts Gatwick Airport within 45 minutes and the Port of Dover within an hour. When you also consider that Bearsted Railway Station is a six-minute drive away and operates direct services to London Victoria in 1 hour 15 minutes, it's easy to see why Parsonage Place makes such a great place to be.

## Countryside idyll with city connections

A broad selection of homes to suit most lifestyles

Parsonage Place is an attractive collection of 1, 2, 3 and 4 bedroom homes situated in the historic village of Otham, surrounded by picturesque countryside just outside Maidstone. The development has been designed to provide the perfect balance between modern comfort and rural charm, with private parking to every property and plenty of open space.

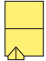
Inside each home you'll find versatile living spaces that are perfectly designed to cater for a variety of lifestyles. Whether you love to entertain friends, need some space to watch your family flourish or simply want a cosy place to relax after a busy day, a home at Parsonage place, with its quality finish and excellent travel links, makes the perfect choice.

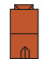






# Development plan


## 4 Bedroom Homes

- 

**The Scrivener**  
Plots 10, 28, 31, 32, 44, 45, 60, 63, 64, 65, 81, 82, 96, 126, 127, 130, 131, 197, 198, 227, 229, 230, 259, 260, 284, 292, 293, 313, 314, 390, 391, 394, 395, 401 & 402
- 


**The Hadlow**  
Plots 94, 95, 97, 98 & 99
- 

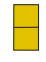
**The Wainwright**  
Plot 100
- 


**The Milliner**  
Plots 3, 15, 16, 29, 86, 124, 125, 133, 228, 258, 283, 285, 389 & 398
- 

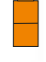
**The Bowyer**  
Plots 4, 14, 17, 27, 38, 66, 196, 231, 257, 272, 275, 282, 291, 294, 315, 330, 333 & 392


## 3 Bedroom Homes

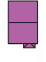
- 


**The Thespian**  
Plots 1, 6, 11, 20, 23, 30, 33, 39, 42, 48, 61, 78, 87, 92, 102, 110, 121, 185, 189, 201, 210, 216, 239, 242, 244 & 311
- 

**The Turner**  
Plots 12, 13, 70, 71, 72, 83 & 84
- 

**The Yalding**  
Plots 21, 25, 40, 195, 199, 217, 226, 245, 261, 276, 280, 295, 300, 326 & 331
- 

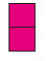
**The Otham**  
Plots 22, 26, 41, 192, 193, 194, 200, 218, 225, 235, 236, 246, 262, 277, 281, 296, 299, 327 & 332
- 


**The Malling**  
Plots 46, 47, 50, 51, 58, 59, 128, 129, 186 & 187
- 


**The Chandler**  
Plots 2, 5, 7, 8, 9, 18, 19, 24, 34, 35, 43, 55, 56, 57, 62, 79, 88, 93, 101, 109, 122, 123, 188, 190, 191, 211, 215, 270, 271, 273, 274, 278, 279, 297, 298, 312, 399 & 400
- 

**The Mason**  
Plots 36, 37, 49, 80, 85, 132, 243, 324, 325, 328, 329, 393, 396 & 397

## 2 Bedroom Homes

- 

**The Joiner**  
Plots 74, 77, 106, 107, 108, 221, 224, 237, 238, 240, 241, 247, 250, 251, 252, 253, 256, 263, 266, 267, 268, 269, 288, 289, 290, 301, 304, 316, 319, 320, 321, 322 & 323
- 

**The Potter**  
Plots 52, 53, 54, 67, 68, 75, 76, 90, 91, 103, 104, 105, 212, 213, 214, 219, 220, 222, 223, 232, 233, 234, 248, 249, 254, 255, 264, 265, 286, 287, 302, 303, 317, 318, 334, 335, 354 & 355
- 

**The Saddler (FOG)**  
Plots 69 & 73


## 1 Bedroom Home


- 

**Gate House**  
Plot 89



## Apartments

- 

**Simmonds Court**  
1 Bedroom  
The Barton - Plots 405, 407 & 410  
The Sultan - Plot 411  
2 Bedroom  
The Emperor - Plot 403  
The Monarch - Plot 404  
The Sovereign - Plots 406 & 408  
The Majesty - Plots 409 & 412
- 

**Wotton Place**  
1 Bed  
The Kaiser - Plots 413, 416, 419  
The Prince - Plots 415, 418  
The Potentate - Plot 420  
2 Bed  
The Magnate - Plots 414 & 417  
The Caesar - Plot 421

## 2-3 Bedroom Homes

- 

**Affordable Homes**

- Material Finishes**

  - (S) - Stone Version
  - (W) - Weatherboard Version
  - (T) - Tile Hanging Version
- Key to plan**

  - s/s Sub station
  - v Visitor parking

The site plan is drawn to show the relative position of individual properties. NOT TO SCALE. This is a two dimensional drawing and will not show land contours and gradients, boundary treatments, landscaping or local authority street lighting. Footpaths subject to change. For details of individual properties and availability please refer to our Sales Advisor.



# The Scrivener

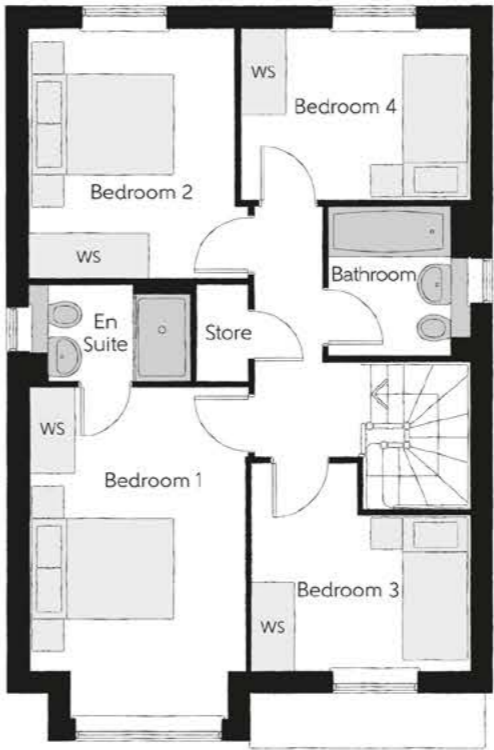
FOUR BEDROOM HOME



Bellway

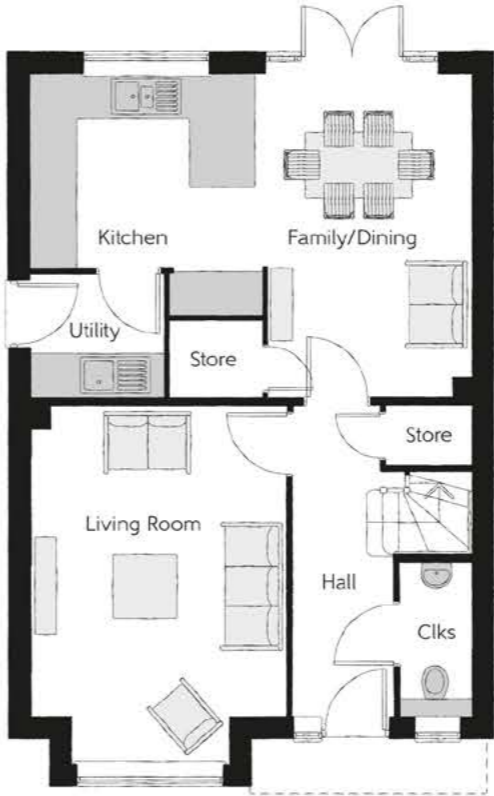
The Scrivener

Four bedroom home



First Floor

Bedroom 1	4.589m x 2.963m <small>(inc. bay)</small>	15'1" x 9'9" <small>(inc. bay)</small>
Bedroom 1 En Suite	2.224m x 1.345m	7'4" x 4'5"
Bedroom 2	3.463m x 3.030m <small>(max)</small>	11'4" x 9'11" <small>(max)</small>
Bedroom 3	3.035m x 2.869m <small>(max)</small>	9'11" x 9'5" <small>(max)</small>
Bedroom 4	3.168m x 2.379m	10'5" x 7'10"
Bathroom	2.075m x 1.905m	6'10" x 6'3"



Ground Floor

Kitchen	3.335m x 3.202m	10'11" x 10'6"
Family/Dining	4.480m x 2.884m <small>(max)</small>	14'8" x 9'6" <small>(max)</small>
Living Room	4.943m x 3.537m <small>(inc. bay)</small>	16'3" x 11'7" <small>(inc. bay)</small>
Utility	1.838m x 1.708m	6'0" x 5'7"
Cloakroom	2.083m x 0.973m	6'10" x 3'2"

Clks - Cloakroom    WS - Wardrobe Space (suggestion only, wardrobe not included)

Furniture arrangements are for illustrative purposes only. Items are not included, nor to scale.

The items shown in this key may be subject to change, and positions could vary from those indicated on this floorplan. Please refer to Sales Advisor for details of your selected plot. Computer generated image shown overleaf. External finishes, landscaping and configuration may vary from plot to plot. Please refer to Sales Advisor for further details. All dimensions are approximate and should not be used for carpet sizes, appliance spaces or furniture. We operate a policy of continuous improvement and individual features such as kitchen and bathroom layouts, doors, windows, garages and elevational treatments may vary from time to time. Consequently these particulars should be treated as general guidance only and do not constitute a contract, part of a contract or a warranty. SC/CB/500/S00/D/01/F.



# The Hadlow

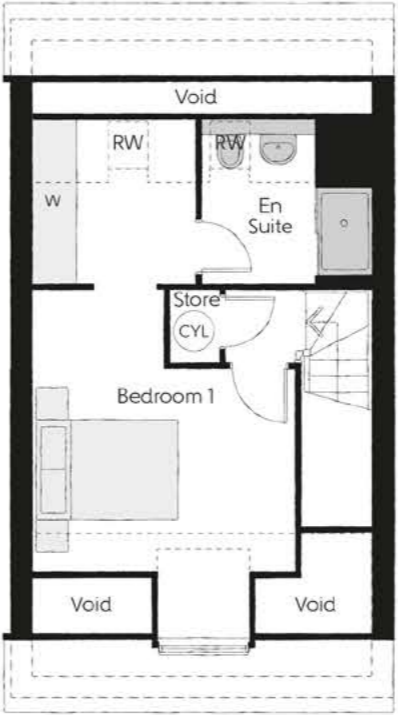
FOUR BEDROOM HOME



**Bellway**

The Hadlow

Four bedroom home

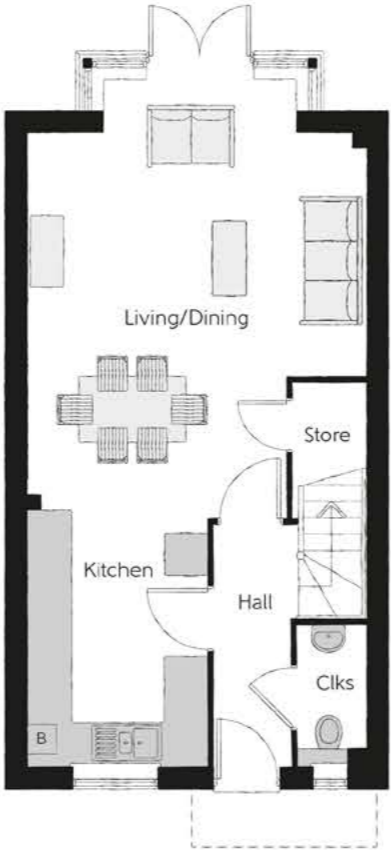


Second Floor

Bedroom 1	3.900m x 3.630m (max) (max)	12'10" x 11'11" (max) (max)
Bedroom 1 En suite	2.329m x 2.280m (max) (max)	7'7" x 7'6" (max) (max)
Dressing	2.280m x 2.250m	7'6" x 7'5"

First Floor

Bedroom 2	3.105m x 3.074m (max) (max)	10'2" x 10'1" (max) (max)
Bedroom 2 En suite	1.961m x 1.476m (max) (max)	6'5" x 4'10" (max) (max)
Bedroom 3	3.361m x 2.592m	11'0" x 8'6"
Bedroom 4	3.361m x 1.989m	11'0" x 6'6"
Bathroom	2.175m x 1.903m (max)	7'2" x 6'3" (max)



Ground Floor

Kitchen	3.450m x 2.503m	11'4" x 8'3"
Living/Dining	6.120m x 4.668m (max) (max)	20'1" x 15'4" (max) (max)
Cloakroom	1.960m x 0.937m	6'5" x 3'1"

Clks - Cloakroom   WS - Wardrobe Space (suggestion only, wardrobe not included)   [RW] - Roof Window   ---- - Reduced Head Height

Furniture arrangements are for illustrative purposes only. Items are not included, nor to scale.

The items shown in this key may be subject to change, and positions could vary from those indicated on this floorplan. Please refer to Sales Advisor for details of your selected plot. Computer generated image shown overleaf. External finishes, landscaping and configuration may vary from plot to plot. Please refer to Sales Advisor for further details. All dimensions are approximate and should not be used for carpet sizes, appliance spaces or furniture. We operate a policy of continuous improvement and individual features such as kitchen and bathroom layouts, doors, windows, garages and elevational treatments may vary from time to time. Consequently these particulars should be treated as general guidance only and do not constitute a contract, part of a contract or a warranty.



# The Wainwright

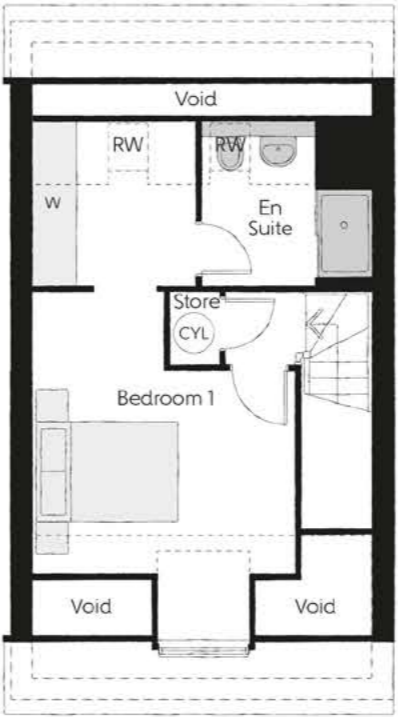
FOUR BEDROOM HOME



**Bellway**

The Wainwright

Four bedroom home

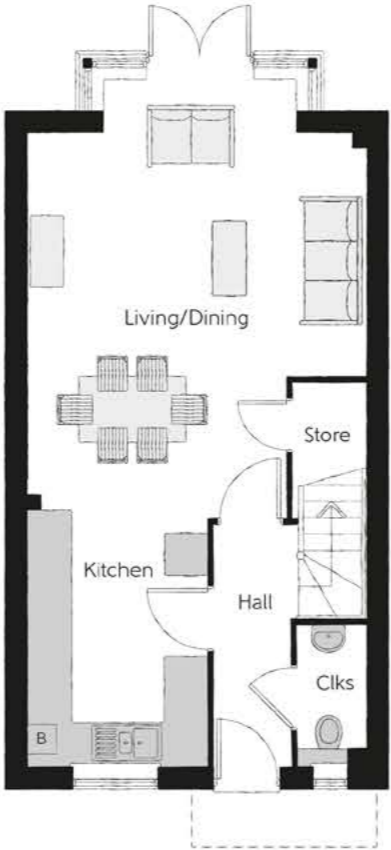


Second Floor

Bedroom 2	3.780m x 3.630m (max) (max)	12'4" x 11'11" (max) (max)
Bedroom 4	3.380m x 2.250m (max) (max)	11'1" x 7'4" (max) (max)
Shower	2.329m x 2.290m	7'7" x 7'6"

First Floor

Bedroom 1	4.667m x 3.369m (max) (max)	15'4" x 11'0" (max) (max)
Bedroom 1 En Suite	2.150m x 1.387m	7'1" x 4'6"
Bedroom 3	3.459m x 2.378m	11'4" x 7'9"
Bathroom	2.200m x 1.904m	7'2" x 6'3"



Ground Floor

Kitchen	3.169m x 2.502m	10'5" x 8'3"
Living/Dining	6.259m x 4.667m (max) (max)	20'7" x 15'4" (max) (max)
Cloakroom	1.905m x 0.937m	6'3" x 3'1"



Clks - Cloakroom WS - Wardrobe Space (suggestion only, wardrobe not included) RW - Roof Window - - - - Reduced Head Height

**Furniture arrangements are for illustrative purposes only. Items are not included, nor to scale.**  
The items shown in this key may be subject to change, and positions could vary from those indicated on this floorplan. Please refer to Sales Advisor for details of your selected plot. Computer generated image shown overleaf. External finishes, landscaping and configuration may vary from plot to plot. Please refer to Sales Advisor for further details. All dimensions are approximate and should not be used for carpet sizes, appliance spaces or furniture. We operate a policy of continuous improvement and individual features such as kitchen and bathroom layouts, doors, windows, garages and elevational treatments may vary from time to time. Consequently these particulars should be treated as general guidance only and do not constitute a contract, part of a contract or a warranty. WW/CB/405/S00/S/01/C.



# The Milliner

FOUR BEDROOM HOME



Bellway

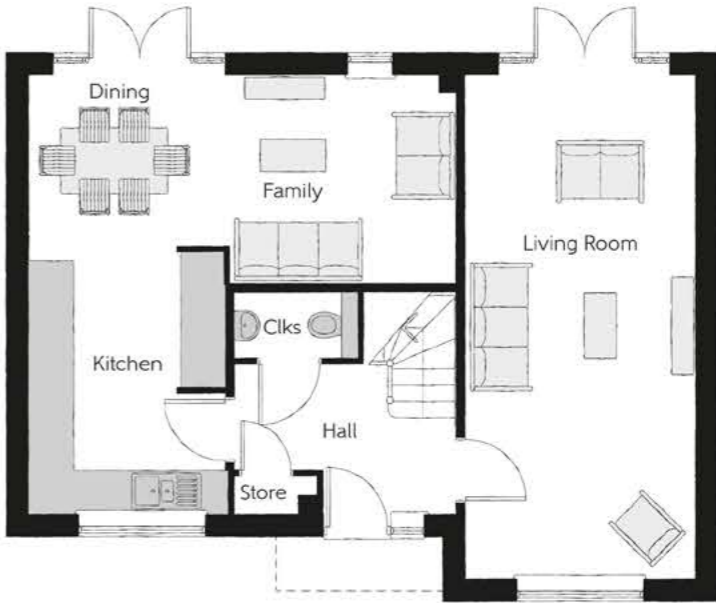
The Milliner

Four bedroom home



First Floor

Bedroom 1	4.352m x 3.160m (max)	14'3" x 10'4" (max)
Bedroom 1 En Suite	2.316m x 1.423m	7'7" x 4'8"
Bedroom 2	3.584m x 3.063m (max)	11'9" x 10'1" (max)
Bedroom 3	2.935m x 2.561m	9'8" x 8'5"
Bedroom 4	3.285m x 2.545m (max)	10'9" x 8'4" (max)
Bathroom	2.242m x 1.905m	7'4" x 6'3"



Ground Floor

Kitchen	3.630m x 2.695m	11'11" x 8'10"
Dining	2.783m x 2.368m	9'2" x 7'9"
Family	3.142m x 2.875m	10'4" x 9'5"
Living Room	6.985m x 3.160m	22'11" x 10'4"
Cloakroom	1.863m x 0.903m	6'1" x 3'0"

Clks - Cloakroom    WS - Wardrobe Space (suggestion only, wardrobe not included)

Furniture arrangements are for illustrative purposes only. Items are not included, nor to scale.

The items shown in this key may be subject to change, and positions could vary from those indicated on this floorplan. Please refer to Sales Advisor for details of your selected plot. Computer generated image shown overleaf. External finishes, landscaping and configuration may vary from plot to plot. Please refer to Sales Advisor for further details. All dimensions are approximate and should not be used for carpet sizes, appliance spaces or furniture. We operate a policy of continuous improvement and individual features such as kitchen and bathroom layouts, doors, windows, garages and elevational treatments may vary from time to time. Consequently these particulars should be treated as general guidance only and do not constitute a contract, part of a contract or a warranty. MI/CW/500/S00/D/01/E.



# The Bowyer

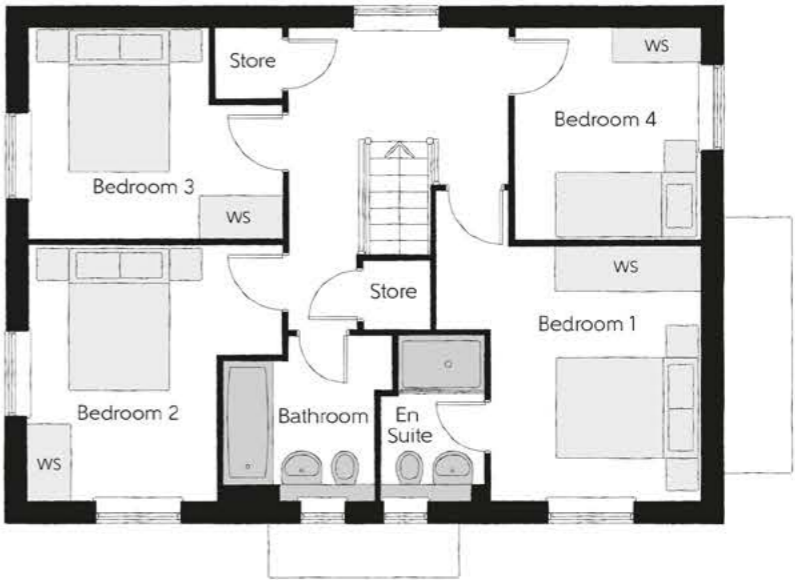
FOUR BEDROOM HOME



**Bellway**

The Bowyer

Four bedroom home



First Floor

Bedroom 1	4.285m x 3.662m (max) (max)	14'1" x 12'0" (max) (max)
Bedroom 1 En Suite	2.254m x 1.441m	7'5" x 4'9"
Bedroom 2	3.527m x 3.269m (max)	11'7" x 10'9" (max)
Bedroom 3	3.527m x 3.178m (max)	11'7" x 10'5" (max)
Bedroom 4	2.925m x 2.580m	9'7" x 8'6"
Bathroom	2.351m x 2.254m (max)	7'9" x 7'5" (max)



Ground Floor

Kitchen	3.600m x 3.013m	11'10" x 9'10"
Family/Dining	4.388m x 3.522m (inc. bay)	14'5" x 11'6" (inc. bay)
Living Room	6.535m x 3.417m	21'5" x 11'3"
Utility	2.030m x 1.873m	6'8" x 6'2"
Cloakroom	1.650m x 0.995m	5'5" x 3'3"

Clks - Cloakroom    WS - Wardrobe Space (suggestion only, wardrobe not included)

Furniture arrangements are for illustrative purposes only. Items are not included, nor to scale.

The items shown in this key may be subject to change, and positions could vary from those indicated on this floorplan. Please refer to Sales Advisor for details of your selected plot. Computer generated image shown overleaf. External finishes, landscaping and configuration may vary from plot to plot. Please refer to Sales Advisor for further details. All dimensions are approximate and should not be used for carpet sizes, appliance spaces or furniture. We operate a policy of continuous improvement and individual features such as kitchen and bathroom layouts, doors, windows, garages and elevational treatments may vary from time to time. Consequently these particulars should be treated as general guidance only and do not constitute a contract, part of a contract or a warranty. BO/CW/500/S00/D/01/C.



# The Thespian

THREE BEDROOM HOME



Bellway

The Thespian

Three bedroom home



First Floor

Bedroom 1	3.560m x 2.949m	11'8" x 9'8"
Bedroom 1 En Suite	2.949m x 1.200m	9'8" x 3'11"
Bedroom 2	3.175m x 2.390m	10'5" x 7'10"
Bedroom 3	3.175m x 2.370m	10'5" x 7'9"
Bathroom	1.923m x 1.903m	6'4" x 6'3"



Ground Floor

Kitchen/Dining	4.848m x 3.113m	15'11" x 10'3"
Living Room	4.848m x 3.478m (max)	15'11" x 11'5" (max)
Cloakroom	1.898m x 0.960m	6'3" x 3'2"

Clks - Cloakroom    WS - Wardrobe Space (suggestion only, wardrobe not included)

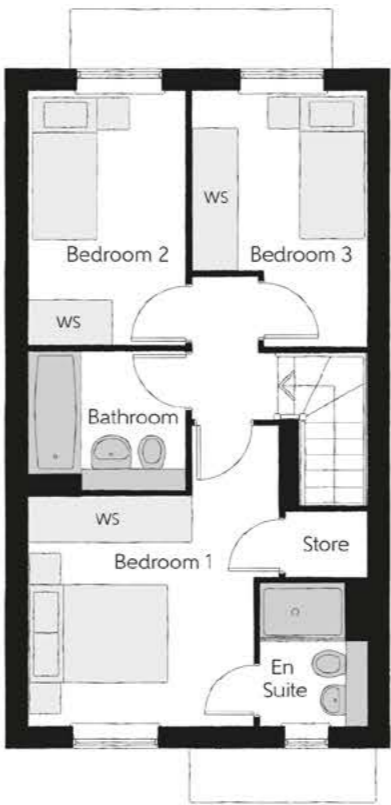
Furniture arrangements are for illustrative purposes only. Items are not included, nor to scale.

The items shown in this key may be subject to change, and positions could vary from those indicated on this floorplan. Please refer to Sales Advisor for details of your selected plot. Computer generated image shown overleaf. External finishes, landscaping and configuration may vary from plot to plot. Please refer to Sales Advisor for further details. All dimensions are approximate and should not be used for carpet sizes, appliance spaces or furniture. We operate a policy of continuous improvement and individual features such as kitchen and bathroom layouts, doors, windows, garages and elevational treatments may vary from time to time. Consequently these particulars should be treated as general guidance only and do not constitute a contract, part of a contract or a warranty. TH/CT/405/S00/D/01/F.

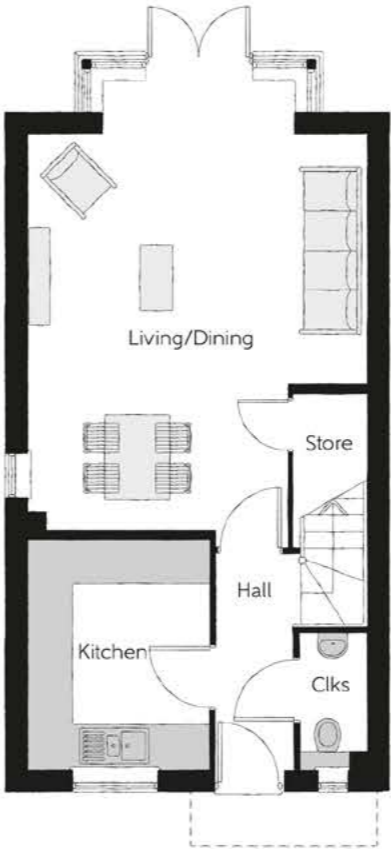


The Turner

THREE BEDROOM HOME



First Floor		
Bedroom 1	4.161m x 3.456m	13'8" x 11'4"
Bedroom 1 En Suite	1.960m x 1.475m	6'5" x 4'10"
Bedroom 2	3.492m x 2.150m	11'5" x 7'1"
Bedroom 3	3.507m x 2.430m	11'6" x 7'11"
Bathroom	2.150m x 1.905m	7'1" x 6'3"



Ground Floor		
Kitchen	3.169m x 2.505m	10'5" x 8'3"
Living/Dining	6.225m x 4.668m (max)	20'5" x 15'4" (max)
Cloakroom	1.960m x 0.937m	6'5" x 3'1"

Clks - Cloakroom    WS - Wardrobe Space (suggestion only, wardrobe not included)

**Furniture arrangements are for illustrative purposes only. Items are not included, nor to scale.**

The items shown in this key may be subject to change, and positions could vary from those indicated on this floorplan. Please refer to Sales Advisor for details of your selected plot. Computer generated image shown overleaf. External finishes, landscaping and configuration may vary from plot to plot. Please refer to Sales Advisor for further details. All dimensions are approximate and should not be used for carpet sizes, appliance spaces or furniture. We operate a policy of continuous improvement and individual features such as kitchen and bathroom layouts, doors, windows, garages and elevational treatments may vary from time to time. Consequently these particulars should be treated as general guidance only and do not constitute a contract, part of a contract or a warranty. TU/CB/405/S00/S/01/E.



# The Yalding

THREE BEDROOM HOME



Bellway

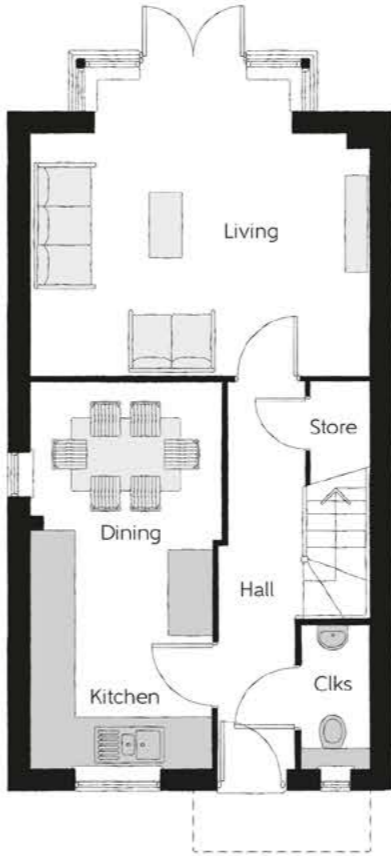
The Yalding

Three bedroom home



First Floor

Bedroom 1	3.593m x 3.07m (max)	11'9" x 10'1" (max)
Bedroom 1 En Suite	1.960m x 1.475m	6'5" x 4'10"
Bedroom 2	3.358m x 2.589m	11'0" x 8'6"
Bedroom 3	3.358m x 1.986m	11'0" x 6'6"
Bathroom	2.150m x 1.905m	7'1" x 6'3"



Ground Floor

Kitchen/Dining	5.334m x 2.648m (max)	17'6" x 8'8" (max)
Living	4.668m x 4.146m	15'4" x 13'7"
Cloakroom	1.960m x 0.937m	6'5" x 3'1"

Clks - Cloakroom    WS - Wardrobe Space (suggestion only, wardrobe not included)

Furniture arrangements are for illustrative purposes only. Items are not included, nor to scale.

The items shown in this key may be subject to change, and positions could vary from those indicated on this floorplan. Please refer to Sales Advisor for details of your selected plot. Computer generated image shown overleaf. External finishes, landscaping and configuration may vary from plot to plot. Please refer to Sales Advisor for further details. All dimensions are approximate and should not be used for carpet sizes, appliance spaces or furniture. We operate a policy of continuous improvement and individual features such as kitchen and bathroom layouts, doors, windows, garages and elevational treatments may vary from time to time. Consequently these particulars should be treated as general guidance only and do not constitute a contract, part of a contract or a warranty. [TU/CB/405/S00/S/01/E](#).



The Otham

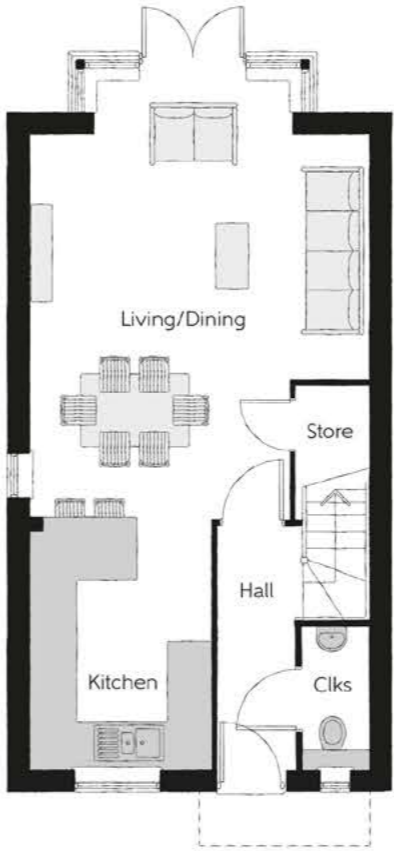
THREE BEDROOM HOME



Bellway



First Floor		
Bedroom 1	3.593m x 3.07m (max)	11'9" x 10'1" (max)
Bedroom 1 En Suite	1.960m x 1.475m	6'5" x 4'10"
Bedroom 2	3.358m x 2.589m	11'0" x 8'6"
Bedroom 3	3.358m x 1.986m	11'0" x 6'6"
Bathroom	2.150m x 1.905m	7'1" x 6'3"



Ground Floor		
Kitchen	3.450m x 2.503m	11'4" x 8'3"
Living/Dining	6.120m x 4.668m (max) (max)	20'1" x 15'4" (max) (max)
Cloakroom	1.960m x 0.937m	6'5" x 3'1"

Clks - Cloakroom    WS - Wardrobe Space (suggestion only, wardrobe not included)

**Furniture arrangements are for illustrative purposes only. Items are not included, nor to scale.**

The items shown in this key may be subject to change, and positions could vary from those indicated on this floorplan. Please refer to Sales Advisor for details of your selected plot. Computer generated image shown overleaf. External finishes, landscaping and configuration may vary from plot to plot. Please refer to Sales Advisor for further details. All dimensions are approximate and should not be used for carpet sizes, appliance spaces or furniture. We operate a policy of continuous improvement and individual features such as kitchen and bathroom layouts, doors, windows, garages and elevational treatments may vary from time to time. Consequently these particulars should be treated as general guidance only and do not constitute a contract, part of a contract or a warranty. [TU/CB/405/S00/S/01/E](#).



# The Malling

THREE BEDROOM HOME



Bellway

The Malling

Three bedroom home



First Floor		
Bedroom 1	4.960m x 3.210m <small>(max) (max)</small>	16'3" x 10'6" <small>(max) (max)</small>
Bedroom 1 En suite	2.320m x 1.563m	7'7" x 5'2"
Bedroom 2	3.660m x 3.145m <small>(max) (max)</small>	12'0" x 10'4" <small>(max) (max)</small>
Bedroom 3	3.913m x 2.520m	12'10" x 8'3"
Bathroom	1.957m x 1.905m	6'5" x 6'3"



Ground Floor		
Living/Dining/Kitchen	7.660m x 4.630m <small>(max) (max)</small>	25'2" x 15'2" <small>(max) (max)</small>
Cloakroom	1.905m x 0.963m	6'3" x 3'2"
Garage	6.023m x 3.133m	19'9" x 10'3"

Clks - Cloakroom WS - Wardrobe Space (suggestion only, wardrobe not included)

Furniture arrangements are for illustrative purposes only. Items are not included, nor to scale.

The items shown in this key may be subject to change, and positions could vary from those indicated on this floorplan. Please refer to Sales Advisor for details of your selected plot. Computer generated image shown overleaf. External finishes, landscaping and configuration may vary from plot to plot. Please refer to Sales Advisor for further details. All dimensions are approximate and should not be used for carpet sizes, appliance spaces or furniture. We operate a policy of continuous improvement and individual features such as kitchen and bathroom layouts, doors, windows, garages and elevational treatments may vary from time to time. Consequently these particulars should be treated as general guidance only and do not constitute a contract, part of a contract or a warranty.



# The Chandler

THREE BEDROOM HOME

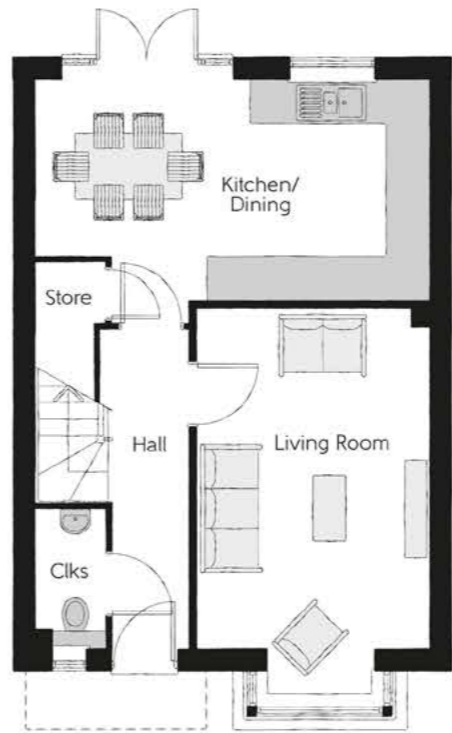


Bellway



### First Floor

Bedroom 1	3.402m x 3.019m	11'2" x 9'11"
Bedroom 1 En Suite	2.445m x 1.195m	8'0" x 3'11"
Bedroom 2	3.495m x 3.402m (max)	11'6" x 11'2" (max)
Bedroom 3	3.040m x 2.474m	10'0" x 8'1"
Bathroom	1.965m x 1.957m	6'5" x 6'5"



### Ground Floor

Kitchen/Dining	5.455m x 3.050m	17'11" x 10'0"
Living Room	5.364m x 3.216m (inc. bay)	17'7" x 10'7" (inc. bay)
Cloakroom	1.895m x 0.951m	6'3" x 3'1"

Clks - Cloakroom    WS - Wardrobe Space (suggestion only, wardrobe not included)

Furniture arrangements are for illustrative purposes only. Items are not included, nor to scale.

The items shown in this key may be subject to change, and positions could vary from those indicated on this floorplan. Please refer to Sales Advisor for details of your selected plot. Computer generated image shown overleaf. External finishes, landscaping and configuration may vary from plot to plot. Please refer to Sales Advisor for further details. All dimensions are approximate and should not be used for carpet sizes, appliance spaces or furniture. We operate a policy of continuous improvement and individual features such as kitchen and bathroom layouts, doors, windows, garages and elevational treatments may vary from time to time. Consequently these particulars should be treated as general guidance only and do not constitute a contract, part of a contract or a warranty. CH/CB/405/S00/D/01/D.



# The Mason

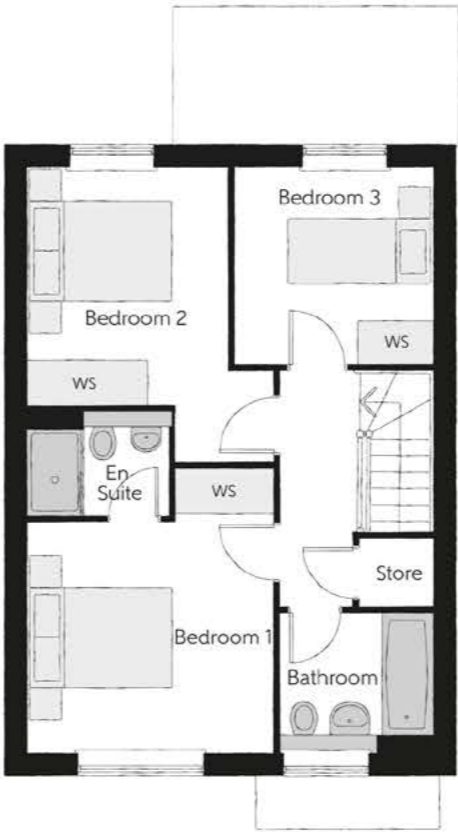
THREE BEDROOM HOME



Bellway

The Mason

Three bedroom home



First Floor

Bedroom 1	3.928m x 3.438m <small>(max)</small>	12'11" x 11'3" <small>(max)</small>
Bedroom 1 En Suite	1.978m x 1.460m	6'6" x 4'9"
Bedroom 2	4.095m x 3.438m <small>(max)</small>	13'5" x 11'3" <small>(max)</small>
Bedroom 3	2.739m x 2.738m <small>(max)</small>	9'0" x 9'0" <small>(max)</small>
Bathroom	2.085m x 1.912m	6'10" x 6'3"



Ground Floor

Kitchen/Family/Dining	5.635m x 4.477m	18'6" x 14'8"
Living Room	3.710m x 3.420m	12'2" x 11'3"
Utility	1.776m x 1.663m	5'10" x 5'5"
Cloakroom	1.912m x 0.959m	6'3" x 3'2"

Ckls - Cloakroom    WS - Wardrobe Space (suggestion only, wardrobe not included)

Furniture arrangements are for illustrative purposes only. Items are not included, nor to scale.

The items shown in this key may be subject to change, and positions could vary from those indicated on this floorplan. Please refer to Sales Advisor for details of your selected plot. Computer generated image shown overleaf. External finishes, landscaping and configuration may vary from plot to plot. Please refer to Sales Advisor for further details. All dimensions are approximate and should not be used for carpet sizes, appliance spaces or furniture. We operate a policy of continuous improvement and individual features such as kitchen and bathroom layouts, doors, windows, garages and elevational treatments may vary from time to time. Consequently these particulars should be treated as general guidance only and do not constitute a contract, part of a contract or a warranty. MA/CB/405/S00/D/01/C.



# The Joiner

TWO BEDROOM HOME



Bellway



## First Floor

Bedroom 1	4.049m x 2.725m	13'3" x 8'11"
Bedroom 2	4.049m x 2.400m (max)	13'3" x 7'10" (max)
Bathroom	2.360m x 1.905m	7'9" x 6'3"



## Ground Floor

Kitchen/Dining	4.049m x 3.378m (max)	13'3" x 11'1" (max)
Living Room	4.853m x 3.159m (max)	15'11" x 10'4" (max)
Cloakroom	1.468m x 1.010m	4'9" x 3'4"

Clks - Cloakroom    WS - Wardrobe Space (suggestion only, wardrobe not included)

Furniture arrangements are for illustrative purposes only. Items are not included, nor to scale.

The items shown in this key may be subject to change, and positions could vary from those indicated on this floorplan. Please refer to Sales Advisor for details of your selected plot. Computer generated image shown overleaf. External finishes, landscaping and configuration may vary from plot to plot. Please refer to Sales Advisor for further details. All dimensions are approximate and should not be used for carpet sizes, appliance spaces or furniture. We operate a policy of continuous improvement and individual features such as kitchen and bathroom layouts, doors, windows, garages and elevational treatments may vary from time to time. Consequently these particulars should be treated as general guidance only and do not constitute a contract, part of a contract or a warranty. JO/CB/405/S00/S/01/B.



# The Potter

TWO BEDROOM HOME



Bellway

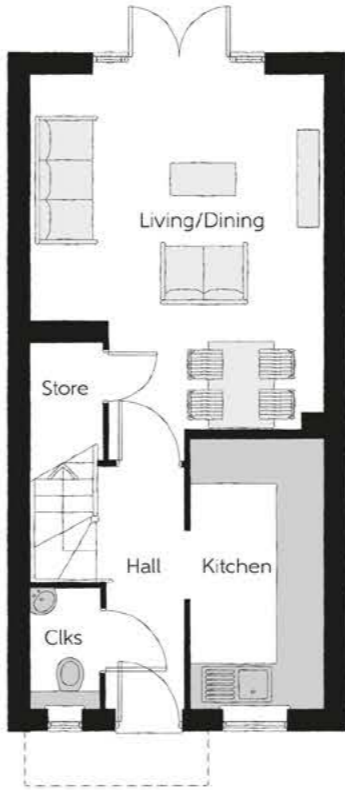
The Potter

Two bedroom home



### First Floor

Bedroom 1	4.037m x 3.993m (max)	13'3" x 13'1" (max)
Bedroom 1 En Suite	1.863m x 1.476m	6'1" x 4'10"
Bedroom 2	3.993m x 2.468m (max)	13'1" x 8'1" (max)
Bathroom	1.918m x 1.863m	6'3" x 6'1"



### Ground Floor

Kitchen	3.720m x 1.800m	12'2" x 5'11"
Living/Dining	5.338m x 3.993m (max)	17'6" x 13'1" (max)
Cloakroom	1.600m x 0.940m	5'3" x 3'1"

Clks - Cloakroom WS - Wardrobe Space (suggestion only, wardrobe not included)

Furniture arrangements are for illustrative purposes only. Items are not included, nor to scale.

The items shown in this key may be subject to change, and positions could vary from those indicated on this floorplan. Please refer to Sales Advisor for details of your selected plot. Computer generated image shown overleaf. External finishes, landscaping and configuration may vary from plot to plot. Please refer to Sales Advisor for further details. All dimensions are approximate and should not be used for carpet sizes, appliance spaces or furniture. We operate a policy of continuous improvement and individual features such as kitchen and bathroom layouts, doors, windows, garages and elevational treatments may vary from time to time. Consequently these particulars should be treated as general guidance only and do not constitute a contract, part of a contract or a warranty. PO/CT/405/S00/S/01/C.



# The Saddler

TWO BEDROOM HOME

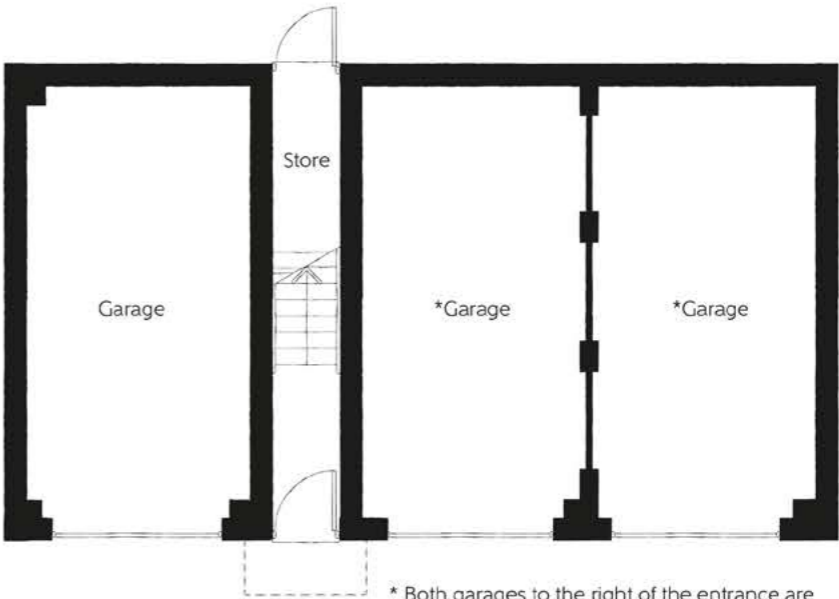


Bellway



First Floor

Kitchen/Dining	4.279m x 3.081m (max) (max)	14'0" x 10'1" (max) (max)
Living	3.539m x 3.293m (max) (max)	11'7" x 10'10" (max) (max)
Bedroom 1	3.980m x 3.312m (max) (max)	13'1" x 10'0" (max) (max)
Bedroom 1 En Suite	2.198m x 1.460m	7'3" x 4'9"
Bedroom 2	3.963m x 2.592m (max) (max)	13'0" x 8'6" (max) (max)
Bathroom	2.213m x 1.905m	7'5" x 6'3"



Ground Floor

Important note: The Saddler is allocated a single garage.  
Please refer to the Sales Advisor for further information.

Clks - Cloakroom WS - Wardrobe Space (suggestion only, wardrobe not included)

Furniture arrangements are for illustrative purposes only. Items are not included, nor to scale.

The items shown in this key may be subject to change, and positions could vary from those indicated on this floorplan. Please refer to Sales Advisor for details of your selected plot. Computer generated image shown overleaf. External finishes, landscaping and configuration may vary from plot to plot. Please refer to Sales Advisor for further details. All dimensions are approximate and should not be used for carpet sizes, appliance spaces or furniture. We operate a policy of continuous improvement and individual features such as kitchen and bathroom layouts, doors, windows, garages and elevational treatments may vary from time to time. Consequently these particulars should be treated as general guidance only and do not constitute a contract, part of a contract or a warranty. SA/CB/405/S00/D/01/A.



# The Gate House

ONE BEDROOM HOME



Bellway

The Gate House

One bedroom home



First Floor		
Bedroom	4.689m x 3.680m	15'5" x 12'1"
Home Office	2.993m x 2.511m	9'10" x 8'3"
Bathroom	2.085m x 1.890m	6'10" x 6'2"



Ground Floor		
Kitchen	2.635m x 2.274m	8'8" x 7'6"
Living/Dining	4.773m x 4.699m	15'8" x 15'5"
Cloakroom	1.908m x 1.890m	6'3" x 6'2"

Clks - Cloakroom    WS - Wardrobe Space (suggestion only, wardrobe not included)

Furniture arrangements are for illustrative purposes only. Items are not included, nor to scale.

The items shown in this key may be subject to change, and positions could vary from those indicated on this floorplan. Please refer to Sales Advisor for details of your selected plot. Computer generated image shown overleaf. External finishes, landscaping and configuration may vary from plot to plot. Please refer to Sales Advisor for further details. All dimensions are approximate and should not be used for carpet sizes, appliance spaces or furniture. We operate a policy of continuous improvement and individual features such as kitchen and bathroom layouts, doors, windows, garages and elevational treatments may vary from time to time. Consequently these particulars should be treated as general guidance only and do not constitute a contract, part of a contract or a warranty.



# Simmonds Court

ONE AND TWO BEDROOM APARTMENTS



Simmonds Court

One and two bedroom apartments



The Emperor Plot 403		
Kitchen	3.181m x 3.120m	10'5" x 10'3"
Living/Dining	4.327m x 3.850m	14'2" x 12'8"
Bedroom 1	3.370m x 3.035m	11'1" x 9'11"
Bedroom 2	4.179m x 2.700m	13'8" x 8'10"
Total area	73.1 sq. m.	911 sq. ft.



The Monarch Plot 404		
Kitchen	3.781m x 3.120m	12'5" x 10'3"
Living	4.427m x 3.850m	14'6" x 12'8"
Dining	2.710m x 2.631m	8'11" x 8'8"
Bedroom 1	3.521m x 3.035m	11'7" x 9'11"
Bedroom 2	3.141m x 2.700m	10'4" x 8'10"
Total area	73.1 sq. m.	787 sq. ft.

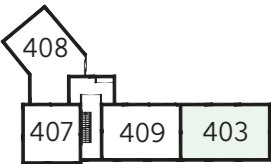
WS - Wardrobe Space (suggestion only, wardrobe not included)

Furniture arrangements are for illustrative purposes only. Items are not included, nor to scale.

The items shown in this key may be subject to change, and positions could vary from those indicated on this floorplan. Please refer to Sales Advisor for details of your selected plot. Computer generated image shown overleaf. External finishes, landscaping and configuration may vary from plot to plot. Please refer to Sales Advisor for further details. All dimensions are approximate and should not be used for carpet sizes, appliance spaces or furniture. We operate a policy of continuous improvement and individual features such as kitchen and bathroom layouts, doors, windows, garages and elevational treatments may vary from time to time. Consequently these particulars should be treated as general guidance only and do not constitute a contract, part of a contract or a warranty.



Second Floor



First Floor



Ground Floor

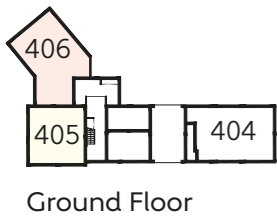
The Baron  
Plots 405, 407 & 410

Kitchen	3.725m x 2.975m	12'3" x 9'9"
Living/Dining	4.460m x 3.910m	14'8" x 12'10"
Bedroom	3.325m x 3.200m	10'11" x 10'6"
<b>Total area</b>	<b>53.6 sq. m.</b>	<b>577 sq. ft.</b>



The Sovereign  
Plots 406 & 408

Kitchen	3.610m x 2.812m	11'10" x 9'3"
Living/Dining	4.610m x 4.173m	15'1" x 13'8"
Bedroom 1	3.603m x 3.185m	11'10" x 10'5"
Bedroom 2	3.695m x 3.384m	12'1" x 11'1"
<b>Total area</b>	<b>74.8 sq. m.</b>	<b>806 sq. ft.</b>



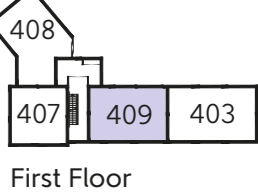
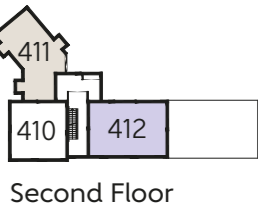
The Sultan  
Plot 411

Kitchen	3.365m x 1.885m	11'0" x 6'2"
Living/Dining	5.548m x 3.290m	18'2" x 10'10"
Bedroom	3.887m x 3.370m	12'9" x 11'1"
Utility	1.800m x 1.295m	5'11" x 4'3"
<b>Total area</b>	<b>60.1 sq. m.</b>	<b>647 sq. ft.</b>



The Majesty  
Plots 409 & 412

Kitchen	3.395m x 2.978m	11'2" x 9'9"
Living/Dining	4.007m x 3.865m	13'2" x 12'8"
Bedroom 1	3.975m x 3.406m	13'0" x 11'2"
Bedroom 2	3.835m x 2.609m	12'7" x 8'7"
<b>Total area</b>	<b>70.4 sq. m.</b>	<b>758 sq. ft.</b>



WS - Wardrobe Space (suggestion only, wardrobe not included)

Furniture arrangements are for illustrative purposes only. Items are not included, nor to scale.

The items shown in this key may be subject to change, and positions could vary from those indicated on this floorplan. Please refer to Sales Advisor for details of your selected plot. Computer generated image shown overleaf. External finishes, landscaping and configuration may vary from plot to plot. Please refer to Sales Advisor for further details. All dimensions are approximate and should not be used for carpet sizes, appliance spaces or furniture. We operate a policy of continuous improvement and individual features such as kitchen and bathroom layouts, doors, windows, garages and elevational treatments may vary from time to time. Consequently these particulars should be treated as general guidance only and do not constitute a contract, part of a contract or a warranty.

WS - Wardrobe Space (suggestion only, wardrobe not included)

Furniture arrangements are for illustrative purposes only. Items are not included, nor to scale.

The items shown in this key may be subject to change, and positions could vary from those indicated on this floorplan. Please refer to Sales Advisor for details of your selected plot. Computer generated image shown overleaf. External finishes, landscaping and configuration may vary from plot to plot. Please refer to Sales Advisor for further details. All dimensions are approximate and should not be used for carpet sizes, appliance spaces or furniture. We operate a policy of continuous improvement and individual features such as kitchen and bathroom layouts, doors, windows, garages and elevational treatments may vary from time to time. Consequently these particulars should be treated as general guidance only and do not constitute a contract, part of a contract or a warranty.



# Wotton Place

ONE AND TWO BEDROOM APARTMENTS



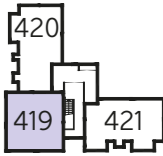
Wotton Place

One and two bedroom apartments

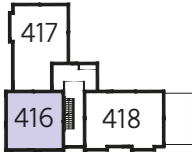


The Kaiser  
Plots 413, 416 & 419

Kitchen	3.752m x 2.975m	12'3" x 9'9"
Living/Dining Room	4.460m x 3.910m	14'8" x 12'10"
Bedroom	3.325m x 3.200m	10'11" x 10'6"
<b>Total area</b>	<b>53.6 sq. m.</b>	<b>577 sq. ft.</b>



Second Floor



First Floor



Ground Floor

WS - Wardrobe Space (suggestion only, wardrobe not included)

Furniture arrangements are for illustrative purposes only. Items are not included, nor to scale.

The items shown in this key may be subject to change, and positions could vary from those indicated on this floorplan. Please refer to Sales Advisor for details of your selected plot. Computer generated image shown overleaf. External finishes, landscaping and configuration may vary from plot to plot. Please refer to Sales Advisor for further details. All dimensions are approximate and should not be used for carpet sizes, appliance spaces or furniture. We operate a policy of continuous improvement and individual features such as kitchen and bathroom layouts, doors, windows, garages and elevational treatments may vary from time to time. Consequently these particulars should be treated as general guidance only and do not constitute a contract, part of a contract or a warranty.



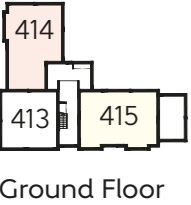
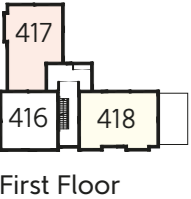
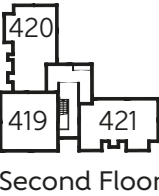
The Magnate  
Plots 414 & 417

Kitchen	4.010m x 2.800m	13'2" x 9'2"
Living/Dining	4.620m x 4.600m	15'2" x 15'1"
Bedroom 1	3.406m x 3.184m	11'2" x 10'5"
Bedroom 2	3.584m x 2.899m	11'9" x 9'6"
<b>Total area</b>	<b>71.3 sq. m.</b>	<b>768 sq. ft.</b>



The Prince  
Plots 415 & 418

Kitchen	3.478m x 1.985m	11'5" x 6'6"
Living/Dining	5.435m x 3.888m	17'10" x 12'9"
Bedroom 1	4.285m x 3.406m	14'1" x 11'2"
Bedroom 2	3.835m x 2.609m	12'7" x 8'7"
<b>Total area</b>	<b>72.9 sq. m.</b>	<b>785 sq. ft.</b>



WS - Wardrobe Space (suggestion only, wardrobe not included)

Furniture arrangements are for illustrative purposes only. Items are not included, nor to scale.

The items shown in this key may be subject to change, and positions could vary from those indicated on this floorplan. Please refer to Sales Advisor for details of your selected plot. Computer generated image shown overleaf. External finishes, landscaping and configuration may vary from plot to plot. Please refer to Sales Advisor for further details. All dimensions are approximate and should not be used for carpet sizes, appliance spaces or furniture. We operate a policy of continuous improvement and individual features such as kitchen and bathroom layouts, doors, windows, garages and elevational treatments may vary from time to time. Consequently these particulars should be treated as general guidance only and do not constitute a contract, part of a contract or a warranty.

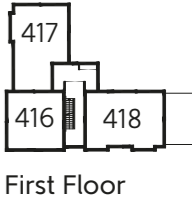
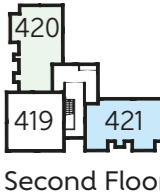
The Potentate  
Plot 420

Kitchen	3.180m x 2.040m	10'5" x 6'8"
Living/Dining	4.600m x 4.482m	15'1" x 14'8"
Bedroom	4.256m x 3.354m	14'0" x 11'0"
Study	2.951m x 2.255m	9'8" x 7'5"
<b>Total area</b>	<b>60.8 sq. m.</b>	<b>654 sq. ft.</b>



The Caesar  
Plot 421

Kitchen	4.266m x 2.007m	14'0" x 6'7"
Living/Dining	4.515m x 4.281m	14'10" x 14'1"
Bedroom	4.510m x 3.465m	14'10" x 11'4"
<b>Total area</b>	<b>59.4 sq. m.</b>	<b>639 sq. ft.</b>



WS - Wardrobe Space (suggestion only, wardrobe not included)

Furniture arrangements are for illustrative purposes only. Items are not included, nor to scale.

The items shown in this key may be subject to change, and positions could vary from those indicated on this floorplan. Please refer to Sales Advisor for details of your selected plot. Computer generated image shown overleaf. External finishes, landscaping and configuration may vary from plot to plot. Please refer to Sales Advisor for further details. All dimensions are approximate and should not be used for carpet sizes, appliance spaces or furniture. We operate a policy of continuous improvement and individual features such as kitchen and bathroom layouts, doors, windows, garages and elevational treatments may vary from time to time. Consequently these particulars should be treated as general guidance only and do not constitute a contract, part of a contract or a warranty.

Houses Specification

			1 & 2 Bedroom Homes	3 Bedroom Homes	4 Bedroom Homes
FINISHES	Loft Hatch	Loft Hatch - Hinged Drop Down  **  ††	●	●	●
	Entrance Doors	GRP Insulated Door	●	●	●
	Ceilings	Crown White Matt Emulsion	●	●	●
	Walls	Crown White Matt Emulsion	●	●	●
	Floors	Concrete Ground Floor / Chipboard First Floor	●	●	●
	Window Cills	White Satin MDF	●	●	●
	Stairs	Timber Stair - White Satin MDF Strings	●	●	●
	Balusters	White Satin Stop Chamfered Balusters	●	●	●
	Newel Posts	White Satin Stop Chamfered Newels	●	●	●
	Newel Caps	White Satin Flat Top Newel Caps	●	●	●
	Handrail	White Satin Heavy Duty Handrail	●	●	●
	Skirting	White Satin 94x14 MDF Grooved & Chamfered	●	●	
		White Satin 120x14 MDF Grooved & Chamfered			●
	Architrave	White Satin 69x18 MDF Grooved & Chamfered	●	●	●
	Internal Doors	White Pre Finished Vertical Panel Internal Doors	●	●	●
	Ironmongery	Chrome SR100 Door Furniture	●	●	●
KITCHEN	Frontals	Bellway Band B options  ~~	●	●	
		Bellway Band C options  ~~			●
	Carcass	Premium Grade 18mm thk Colour Matched Carcass	●	●	●
	Units	Frontal Matching Table Ends	●	●	
		Unit Framing			●
	Worktops	40mm Square Edge Worktops with upstand	●	●	●
	Kitchen Sink	Leisure Linear Bowl & Half SS Sink & TCAF3 Tap (inc Sink Liner)	●		
		Leisure Eaton Bowl & Half SS Sink & Aquamono Tap (inc Sink Liner)		●	
		Leisure Albion Bowl & Half SS Sink & Aquamono Tap (inc Sink Liner)			●
	Utility Sink	Leisure Eaton Single Bowl SS Sink & Aquamono Tap (inc Sink Liner)		●	
		Leisure Albion Single Bowl SS Sink & Aquamono Tap (inc Sink Liner)			●
	Appliances Oven	Electrolux Single Oven KOFGH00BX	●	●	
		A E G Single Oven BEK351010M			●
	Appliances Hob	Electrolux 4 Burner Gas Hob KGS6404SX & SS Splashback	●	●	
		A E G 4 Burner Gas Hob HGB64420YM & Glass Splashback			●
	Appliances Extractor	Cooker Hood Extractor LFC316X (recirculating)	●	●	
		A E G Cooker Hood Extractor DKB4650M			●
	Appliances Microwave	A E G Combination Microwave KMK721000M			●
	Appliances Fridge Freezer	Electrolux 70/30 Fridge Freezer LNS5LE18S	●	●	
		A E G 70/30 Fridge Freezer SCB618F3LS			●
	Appliance Dishwasher	Electrolux Dishwasher KEAF7200L	●	●	
		A E G Dishwasher FSK31610Z  ††			●
	Appliance Washing Machine	Washing Machine Space Only (inc Feed & Waste)	●	●	
		A E G Washing Machine L7FE7261BI			●
WET ROOMS	Cloaks - WC	Roca DEBBA WC with Concealed Cistern & PL2 Flush Plate  ^^	●	●	●
	Cloaks - Basin	Roca Wash Hand Basin  ^	●	●	●
	Cloaks - Brassware	Bristan PISA Small Basin Chrome Mixer Tap	●	●	●
	Cloaks - Tiling	Band 2 Tiling to WC Boxing, Splashback Tiling to WHB, Flat Edge Chrome Trim	●	●	
		Band 3 Tiling to WC Boxing, Splashback Tiling to WHB, Flat Edge Chrome Trim			●
	Bathroom - WC	Roca DEBBA WC with Concealed Cistern & PL2 Flush Plate  ^^	●	●	●
	Bathroom - Basin	Roca DEBBA 500WHB with Semi Pedestal	●	●	
		Roca DEBBA 550 WHB with Semi Pedestal  ~			●
	Bathroom - Bath	Roca OSLO Acrylic Bath & Rigid Bath Panel	●	●	●
	Bathroom - Brassware	Bristan PISA Chrome Bath & Basin Mixer Taps	●	●	
		Bristan SAIL Chrome Bath & Basin Mixer Taps			●
	Bathroom - Tiling	1/2 Height Tiling (Band 2) to Wet Walls with Flat Edged Chrome Trim  ***  †††	●	●	
		1/2 Height Tiling (Band 3) to Wet Walls with Flat Edged Chrome Trim  ***  †††			●
	En-Suite - WC	Roca DEBBA WC with Concealed Cistern & PL2 Flush Plate  ^^	●	●	●
	En-Suite - Basin	Roca DEBBA 450 WHB with Full Pedestal	●	●	
		Roca DEBBA 550 WHB with Semi Pedestal			●
	En-Suite - Brassware	Bristan PISA Chrome Bath & Basin Mixer Taps	●	●	
		Bristan SAIL Chrome Bath & Basin Mixer Taps			●
	En-Suite - Shower Tray	Mira FLIGHT Low Shower Tray with Mira ELEVATE Enclosure  ^	●	●	●
	En-Suite - Shower	Mira MINIMAL Single Thermostatic Shower  ‡‡‡	●	●	●
	En-Suite - Tiling	1/2 Height Tiling (Band 2) to Wet Walls with Flat Edged Chrome Trim  †††	●	●	
		1/2 Height Tiling (Band 3) to Wet Walls with Flat Edged Chrome Trim  †††			●

			1 & 2 Bedroom Homes	3 Bedroom Homes	4 Bedroom Homes
MECHANICAL	Waste Water Heat Recovery	Waste Water Heat Recovery System  ^		●	●
	Boiler	Ideal LOGIC Combination Boiler (Cb)  ^	●	●	●
	Controls	Google Nest 3RD Gen Dual Zone Learning Thermostat	●	●	●
	Radiators	Stelrad Compact Steel Panel Radiators with Grilles	●	●	●
	Towel Warmers	Flat Chrome to Bathroom	●	●	
		Flat Chrome to Bathroom & En-Suite 1			●
ELECTRICS	Ventilation	Window Trickle Ventilators with Mechanical Extract Fans (system 3) dMEV	●	●	●
	PV Generation Optimiser	Marlec Solar iBoost  ^			●
	Safety - Heat	Heat Detector DET  ^^^	●	●	●
	Safety - Fire	Optical Smoke Detectors LD2 D2 DET	●	●	●
	Safety - Carbon	Fireblitz FHCO-BH Carbon Monoxide Detector	●	●	●
	Consumer Unit	Wylex Consumer Unit	●	●	●
	Sockets & Switches	Electrium CASA White Fittings	●	●	●
	Lighting	Pendant Fitting to Habitable Rooms	●	●	●
	Lighting - Kitchen	White Recessed Spot Lights	●	●	
		Polished Chrome Recessed Spot Lights			●
	Lighting - Kitchen Under Unit	Slimline Tri-Light	●	●	●
	Lighting - Bathroom & En-Suites	White Recessed Spot Lights	●	●	●
	Lighting - External	External Light Clifton Brushed Steel Up/Down (Front & Rear)	●	●	●
	Communications - TV	TV Point to Living Room & Bedroom 1	●	●	●
	Communications - Data	Cat 6 Network Point to Living Room & Study	●	●	●
	Broadband	Ultrafast Fibre Connectivity (Openreach, Virgin Media, Hyperoptic)  ‡‡	●	●	●
EXTERNALS & MISC	Ecological	Hedgehog Highway fencing adaption	●	●	●
	Garages Electrics	Light & Power Point to incurtilage Garages  ##	●	●	●
	Build Method	Masonry  ##	●	●	●
	Maintenance	External Tap			●
	Number Plaque	Artisan Number Plaque	●	●	●
	Footpath & Patio	Buff Riven PCC Flags 450x450x32's	●	●	●
	Garages	Steel Panel Up & Over Canopy Garage Door  ##	●	●	●
	Drives	Block Paviours  #	●	●	●
	Landscaping - Front	Medallion Turf & Landscape Planting  ###	●	●	●
	Landscaping - Rear	Rotovated Topsoil  ###	●	●	●
	Renewables	Photovoltaic Array  ##	●	●	●
	EV Charging Terminal	Pod Point 7kw Solo Universal  *  †	●	●	●

- \* electrical infrastructure upgrade maybe required
- \*\* fire rated as necessary
- \*\*\* full height around bath where shower provided as standard
- † mounting position is plot specific, refer to site layout
- †† where layout allows
- ††† full height to shower enclosure
- ‡ refer site layout
- ‡‡ consult with sales executive for specific development details
- ‡‡‡ flow regulator fitted to bath mixer if serving single thermostatic shower & fed via combination boiler
- ^ housetype dependent - liaise with sales executive
- ^^ inc soft close mechanism seat on 4 & 5 Bedroom Homes ONLY
- ^^^ kitchen only
- # plot dependent
- ## plot specific, refer site layout
- ### refer site landscape layout
- ~ semi recessed basin if AD M4(ii) applicable
- ~~ soft close mechanism to doors & drawers

Apartments Specification

FINISHES		1 Bedroom Apartments	2 Bedroom Apartments
Entrance Doors	Apartment Entrance Door White Gloss Fire Rated Solid Core	●	●
Ceilings	Crown White Matt Emulsion	●	●
Walls	Crown White Matt Emulsion	●	●
Floors	Laminate - Kitchen, Ceramic Tiles - Wet Rooms, Carpet - all other areas - Band 1	●	●
Window Cills	White Satin MDF	●	●
Skirting	White Satin 94x14 MDF Grooved & Chamfered	●	●
Architrave	White Satin 69x18 MDF Grooved & Chamfered	●	●
Internal Doors	White Pre Finished Vertical Panel Internal Doors	●	●
Ironmongery	Chrome SR100 Door Furniture	●	●
KITCHEN			
Carcass	Premium Grade 18mm thk Colour Matched Carcass	●	●
Frontals	Bellway Band B options   ^^^	●	●
Units	Frontal Matching Table Ends	●	●
Worktops	40mm Square Edge Worktops with upstand	●	●
Kitchen Sink	Leisure Linear Bowl & Half SS Sink & TCAF3 Tap (inc Sink Liner)	●	●
Appliances Oven	Electrolux Single Oven KOFGH00BX	●	●
Appliances Hob	Electrolux Induction Hob LIT6043 & SS Splashback	●	●
Appliances Extractor	Cooker Hood Extractor LFC316X (recirculating)	●	●
Appliances Fridge Freezer	Electrolux 70/30 Fridge Freezer LNS5LE18S	●	●
Appliance Dishwasher	Removeable Unit (inc Feed & Waste)   **	●	●
Appliance Washing Machine	Washing Machine Space within A/C (inc Feed & Waste)	●	●
WET ROOMS			
Bathroom - WC	Roca DEBBA WC with Concealed Cistern & PL1 Flush Plate   ‡‡	●	●
Bathroom - Basin	Roca Debba 520 Semi Recessed WHB no Pedestal M4(2)	●	●
Bathroom - Bath	Roca OSLO Acrylic Bath & Rigid Bath Panel	●	●
Bathroom - Brassware	Bristan PISA Chrome Bath & Basin Mixer Taps	●	●
Bathroom - Shower	Over Bath Mira MINIMAL Single Thermostatic Shower   ‡	●	
Bathroom - Tiling	1/2 Height Tiling (Band 2) to Wet Walls with Flat Edged White Trim   * †	●	
	1/2 Height Tiling (Band 2) to Wet Walls with Flat Edged Chrome Trim   * †		●
En-Suite - WC	Roca DEBBA WC with Concealed Cistern & PL1 Flush Plate   ‡‡		●
En-Suite - Basin	Roca Debba 520 Semi Recessed WHB no Pedestal M4(2)		●
En-Suite - Brassware	Bristan PISA Chrome Basin Mixer Taps		●
En-Suite - Shower Tray	Mira FLIGHT Low Shower Tray with Mira ELEVATE Enclosure   ††		●
En-Suite - Shower	Mira MINIMAL Single Thermostatic Shower   ***		●
En-Suite - Tiling	1/2 Height Tiling (Band 2) to Wet Walls with Flat Edged Chrome Trim   †		●
MECHANICAL			
Boiler	Ideal LOGIC Combination Boiler (Cb)   ††	●	●
Controls	Dual Zoned 3 way Heating Programmer & Room Thermostat Cb   †††	●	●
Radiators	Stelrad Compact Steel Panel Radiators with Grilles	●	●
Towel Warmers	Flat Chrome to Bathroom	●	
	Flat Chrome to Bathroom & En-Suite 1		●
Ventilation	Window Trickle Ventilators with Mechanical Extract Fans (system 3) MEV	●	●

ELECTRICS		1 Bedroom Apartments	2 Bedroom Apartments
Home Working	Dedicated Power, USB & Data Points	●	●
Communications - Access	Video Entry System	●	●
Safety - Heat	Heat Detector DET   ‡‡‡	●	●
Safety - Fire	Optical Smoke Detectors LD2 D2 DET	●	●
Safety - Carbon	Honeywell XC100 Carbon Monoxide Detector	●	●
Consumer Unit	Wylex Consumer Unit	●	●
Sockets & Switches	Electrium CASA White Fittings	●	●
USB Locations	Kitchen, Living Room & Bedroom 1 ONLY	●	●
Shaver / Toothbrush Point	Bathroom ONLY	●	
	Bathroom & Ensuite 1 Only		●
Lighting	Pendant Fitting to Habitable Rooms	●	●
Lighting - Kitchen Under Unit	High Output Tri-Light	●	●
Lighting - Bathroom & En-Suites	White Recessed Spot Lights	●	●
Communications - TV	TV Point to Living Room & Bedroom 1	●	●
Communications - Voice	Telephone Point to Living Room	●	●
Communications - Data	Cat 6 Network Point to Living Room & Bedroom 1	●	●
Communications - Satellite	Dual Connection Satellite Points to Living Room	●	●
Broadband	Ultrafast Fibre Connectivity Openreach	●	●
EXTERNALS & MISC			
Shared Parking Areas	Block Pavious   ^	●	●
Build Method	Masonry   ^^	●	●

\* full height around bath where shower provided as standard  
\*\* at build stage  
\*\*\* flow regulator fitted to bath mixer if serving single thermostatic shower & fed via combination boiler  
† full height to shower enclosure  
†† housetype dependent - liaise with sales executive  
††† housetype dependent on particular 4 bed housetypes - liaise with Sales Advisor  
‡ inc MIRA bath screen 11863.004  
‡‡ inc soft close mechanism seat on 4 & 5 Bedroom Homes ONLY  
‡‡‡ kitchen only  
^ plot dependent  
^^ plot specific, refer site layout  
^^^ soft close mechanism to doors & drawers



## Dedicated to delivering quality

An enhanced specification is the hallmark of The Artisan Collection.

All of our homes are equipped with superior fixtures and fittings, which dovetails perfectly with our focus on design and attention to detail.

Expertly crafted using state-of-the-art materials, your brand new home is finished to a high standard so you can start enjoying it the moment you get your keys.

"The overall finish of the home is perfect – Bellway really pay attention to every detail. The team were amazing and supported us throughout the process."

**SAMI AND SARA,**  
HANWOOD PARK

## Homes to love, built with care

From the first day you visit our sales centre, to the day you move in and beyond, we aim to provide a level of service and after-sales care that is second to none.

A number of quality checks are carried out on each of our new homes through the construction process and on completion. Once your home has passed all of our quality checks, you will be invited to attend your Home Demonstration which will provide an opportunity for you to understand the various elements of your new home. On move in day, our site and sales teams will be there to ensure that everything goes as smoothly as possible.

Once you've settled into your new home, Bellway has experienced after-sales teams to provide support and assistance whenever you need it. Our homes come with a 10-year NHBC Buildmark policy, or an equivalent warranty from another provider. This includes deposit protection from exchange of contracts, a two-year builder warranty from legal completion, and then eight years of structural defects insurance cover.\*

We are confident that our approach to building and selling quality homes, coupled with our customer care processes, will provide you with many years of enjoyment in your new home.



\*For more details, visit the NHBC website at [www.nhbc.co.uk/homeowners](http://www.nhbc.co.uk/homeowners) and view the 'Welcome to NHBC warranty and insurance' brochure, or refer to the brochure of your alternative warranty provider.





# Parsonage Place

