



Forster Park

Forster Park is a development of 2, 3, 4, and 5-bedroom homes, located in Stevenage, Hertfordshire.



THE
ARTISAN
COLLECTION

Bellway



Space to breathe

All the comforts of the countryside with the convenience of the town

Forster Park is located on the outskirts of Stevenage with beautiful rural Hertfordshire to the north and an abundance of amenities to the south. There is a major supermarket, a hospital and a choice of primary and secondary schools all within five minutes by car. For everything else, it's an easy seven-minute journey into the town centre. Stevenage town centre is split into two parts; The Old Town and the New Town. The former consists of pedestrianised streets and characterful architecture, which play home to a great variety of independent shops, services and cafés by day. By night they come alive with vibrant bars and restaurants.

The New Town is currently enjoying a major £20bn regeneration programme and offers a great range of high-street shopping in and around Westgate Shopping Centre. Alternatively, head to the Stevenage Indoor Market for a wide range of goods and fresh produce, while 9Yards Stevenage retail park provides out-of-town convenience. There are also plenty of ways to stay entertained in the town. Stevenage Leisure Park is the perfect place to do so. Along with a gym, swimming pool and fitness centre, this fantastic complex features a multi-screen cinema, children's activities and several restaurants.

Alternatively, take in a show at The Gordon Craig Theatre, which hosts a packed schedule of drama, music, comedy and more. Sports fans will be happy to be so close to Lister Tennis Club, plus a number of sports clubs that call nearby

King George Playing Fields their home, including cricket, hockey and bowls. There is also a cricket club in the village of Graveley, just two minutes north by car, along with the Chestfield Downs Golf and Country Club and a choice of popular local pubs.

For even more outdoor activities, it's possible to be at Fairlands Valley Park in less than 10 minutes by road. Not only does this fantastic amenity offer 120 acres of parkland, but there are countless activities to try in and around the park's 11-acre lake, including sailing, kayaking, angling, power kiting, mountain biking and many more. If you prefer your outdoor pursuits to be a little more relaxing, explore the countless public footpaths that criss-cross the surrounding countryside, take a day trip to nearby Knebworth House, or go fruit picking at Graveley Fruit Farm. Plus, of course, it's just a 15-minute drive to the stunning scenery of the Chiltern Hills AONB.

All this is made easy with excellent local transport links. Nearby Lister Close bus stop operates regular services into town, where direct trains to London Kings Cross and Cambridge depart from Stevenage Station with journey times of 23 and 39 minutes, respectively. If you're travelling further afield, the A1(M) and M25 provide excellent road connections to the rest of the country, putting Luton Airport within 30 minutes and Stansted Airport within an hour.



Find quality of life

A collection of homes built around you

Forster Park is a desirable selection of 2, 3, 4 and 5 bedroom homes located on the outskirts of Stevenage. Consisting of homes from our flagship Artisan Range, this attractive collection has been designed to provide welcoming spaces in which to enjoy a better quality of

life. High energy efficiency ensures complete comfort, spacious open-plan interiors provide versatility and electric vehicle charging points add to overall sustainability.

Forster Park masterplan



Gatekeepers Rise
By Ashberry Homes

Woodlands Keep
Future Phase

Ashberry
Sales Area

Chalkhill Blue
By Bellway

Graylings
By Bellway

93 acre country park

LEAP

Proposed
school

Local Centre

SOLD

SOLD

The Greenway
By Bellway

Kingfisher Meadows
By Bellway

Otter Grange
By Bellway

Bellway Sales Area

Kingfisher Meadows



Kingfisher Meadows development plan

3 Bedroom Homes

-  The Thespian
Plots 345, 350 & 353
-  The Chandler
Plots 336 & 337
-  The Harper
Plots 348, 349, 351 & 352

4 Bedroom Homes

-  The Scrivener
Plot 355
-  The Cutler
Plots 332 & 335
-  The Bowyer *Life*
Plots 333, 338, 341 & 358
-  The Philosopher
Plots 356 & 357
-  The Weaver
Plot 331
-  The Reedmaker
Plots 334, 339, 340, 342, 343, 344, 346, 347 & 354

5 Bedroom Homes

-  The Watchmaker
Plots 320, 322, 323, 324 & 327
-  The Draper
Plots 319, 321, 325, 326, 328, 329 & 330

Key to plan

- v Visitor parking
- bcp Bin Collection Point
- LAP Local Area of Play
- ~ Post & Rail Fence
- ... Close Board Fence
- == Estate Railing
- Knee Rail
- Retaining Wall
- Shed

Material Finishes

- T - Tile Hanging Version

The site plan is drawn to show the relative position of individual properties. NOT TO SCALE. This is a two dimensional drawing and will not show land contours and gradients, boundary treatments, landscaping or local authority street lighting. Footpaths subject to change. For details of individual properties and availability please refer to our Sales Advisor.





The Thespian

THREE BEDROOM HOME



Bellway

The Thespian

Three bedroom home



First Floor		
Bedroom 1	2.95m x 3.56m	9'8" x 11'8"
Bedroom 1 En Suite	2.95m x 1.20m	9'8" x 3'11"
Bedroom 2	3.17m x 2.39m	10'5" x 7'10"
Bedroom 3	3.17m x 2.37m	10'5" x 7'9"
Bathroom	1.92m x 1.90m	6'4" x 6'3"



Ground Floor		
Kitchen/Dining	3.11m x 4.85m	10'3" x 15'11"
Living Room	3.48m x 4.85m (max)	11'5" x 15'11" (max)
Cloakroom	1.92m x 0.96m	6'4" x 3'2"

Clks - Cloakroom WS - Wardrobe Space (suggestion only, wardrobe not included)

Furniture arrangements are for illustrative purposes only. Items are not included, nor to scale.

The items shown in this key may be subject to change, and positions could vary from those indicated on this floorplan. Please refer to Sales Advisor for details of your selected plot. Computer generated image shown overleaf. External finishes, landscaping and configuration may vary from plot to plot. Please refer to Sales Advisor for further details. All dimensions are approximate and should not be used for carpet sizes, appliance spaces or furniture. We operate a policy of continuous improvement and individual features such as kitchen and bathroom layouts, doors, windows, garages and elevational treatments may vary from time to time. Consequently these particulars should be treated as general guidance only and do not constitute a contract, part of a contract or a warranty. TH/CB/500/S00/D/01a/L.



The Chandler

THREE BEDROOM HOME



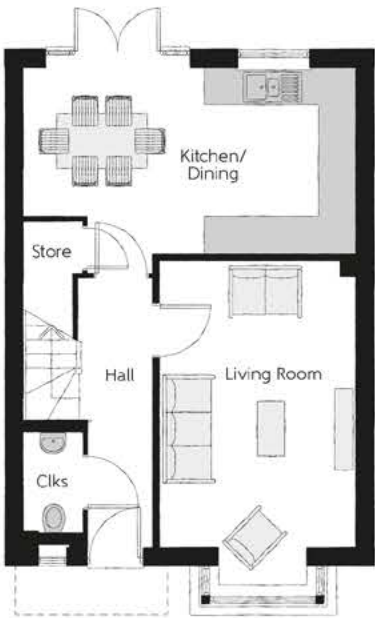
Bellway

The Chandler

Three bedroom home



First Floor		
Bedroom 1	3.40m x 3.02m	11'2" x 9'11"
Bedroom 1 En Suite	2.44m x 1.20m	8'0" x 3'11"
Bedroom 2	3.40m x 3.50m (max)	11'2" x 11'6" (max)
Bedroom 3	3.04m x 2.47m	10'0" x 8'1"
Bathroom	1.97m x 1.96m	6'5" x 6'5"



Ground Floor		
Kitchen/Dining	5.46m x 3.39m	17'11" x 11'2"
Living Room	3.22m x 5.36m (inc. bay)	10'7" x 17'7" (inc. bay)
Cloakroom	0.95m x 1.90m	3'1" x 6'3"

Clks - Cloakroom WS - Wardrobe Space (suggestion only, wardrobe not included)

Furniture arrangements are for illustrative purposes only. Items are not included, nor to scale.
The items shown in this key may be subject to change, and positions could vary from those indicated on this floorplan. Please refer to Sales Advisor for details of your selected plot. Computer generated image shown overleaf. External finishes, landscaping and configuration may vary from plot to plot. Please refer to Sales Advisor for further details. All dimensions are approximate and should not be used for carpet sizes, appliance spaces or furniture. We operate a policy of continuous improvement and individual features such as kitchen and bathroom layouts, doors, windows, garages and elevational treatments may vary from time to time. Consequently these particulars should be treated as general guidance only and do not constitute a contract, part of a contract or a warranty. CH/CB/500/S00/S/01/M.



The Harper

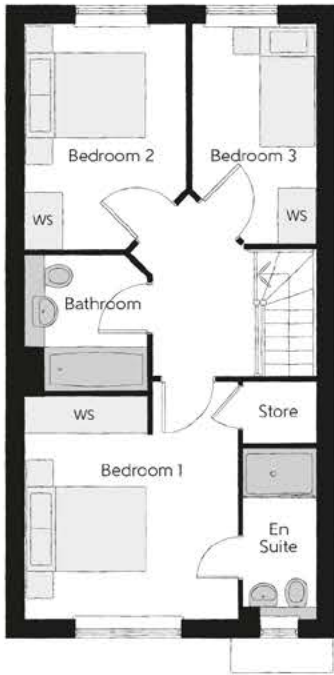
THREE BEDROOM HOME



Bellway

The Harper

Three bedroom home



First Floor

Bedroom 1	3.50m x 3.92m (max)	11'6" x 12'10" (max)
Bedroom 1 En Suite	1.20m x 2.82m	3'11" x 9'3"
Bedroom 2	2.55m x 4.62m	8'4" x 15'2"
Bedroom 3	2.15m x 3.61m	7'1" x 11'10"
Bathroom	2.00m x 2.23m (max)	6'7" x 7'4" (max)



Ground Floor

Kitchen/Dining	4.79m x 3.55m	15'9" x 11'8"
Living Room	3.36m x 4.55m (max)	11'0" x 14'11" (max)
Cloakroom	2.61m x 1.46m	8'7" x 4'10"

Clks - Cloakroom WS - Wardrobe Space (suggestion only, wardrobe not included)

Furniture arrangements are for illustrative purposes only. Items are not included, nor to scale.

The items shown in this key may be subject to change, and positions could vary from those indicated on this floorplan. Please refer to Sales Advisor for details of your selected plot. Computer generated image shown overleaf. External finishes, landscaping and configuration may vary from plot to plot. Please refer to Sales Advisor for further details. All dimensions are approximate and should not be used for carpet sizes, appliance spaces or furniture. We operate a policy of continuous improvement and individual features such as kitchen and bathroom layouts, doors, windows, garages and elevational treatments may vary from time to time. Consequently these particulars should be treated as general guidance only and do not constitute a contract, part of a contract or a warranty. HA/CB/500/S00/S/01/E.



The Scrivener

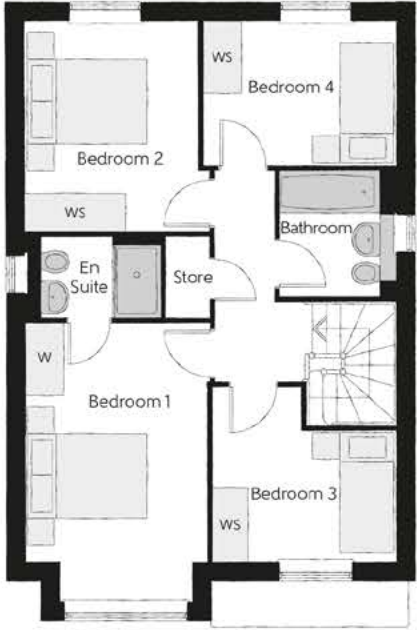
FOUR BEDROOM HOME



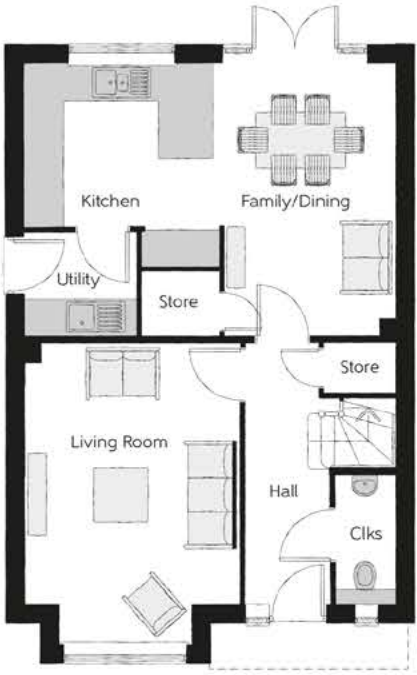
Bellway

The Scrivener

Four bedroom home



First Floor		
Bedroom 1	2.96m x 4.59m (inc. bay)	9'9" x 15'1" (inc. bay)
Bedroom 1 En Suite	2.22m x 1.35m	7'4" x 4'5"
Bedroom 2	2.83m x 3.46m	9'3" x 11'4"
Bedroom 3	3.03m x 2.87m (max)	9'11" x 9'5" (max)
Bedroom 4	3.17m x 2.38m	10'5" x 7'10"
Bathroom	1.91m x 2.08m	6'3" x 6'10"



Ground Floor		
Kitchen	3.20m x 3.33m	10'6" x 10'11"
Family/Dining	2.88m x 4.48m	9'6" x 14'8"
Living Room	3.54m x 4.94m (inc. bay)	11'7" x 16'3" (inc. bay)
Utility	1.84m x 1.71m	6'0" x 5'7"
Cloakroom	0.97m x 2.08m	3'2" x 6'10"

Clks - Cloakroom WS - Wardrobe Space (suggestion only, wardrobe not included)

Furniture arrangements are for illustrative purposes only. Items are not included, nor to scale.

The items shown in this key may be subject to change, and positions could vary from those indicated on this floorplan. Please refer to Sales Advisor for details of your selected plot. Computer generated image shown overleaf. External finishes, landscaping and configuration may vary from plot to plot. Please refer to Sales Advisor for further details. All dimensions are approximate and should not be used for carpet sizes, appliance spaces or furniture. We operate a policy of continuous improvement and individual features such as kitchen and bathroom layouts, doors, windows, garages and elevational treatments may vary from time to time. Consequently these particulars should be treated as general guidance only and do not constitute a contract, part of a contract or a warranty. SC/CB/500/S00/D/01/N.



The Cutler

FOUR BEDROOM HOME



The Cutler

Four bedroom home



First Floor		
Bedroom 1	4.10m x 4.83m	13'5" x 15'10"
Bedroom 1 En Suite	2.10m x 1.95m	6'11" x 6'5"
Bedroom 2	3.12m x 4.21m	10'3" x 13'10"
Bedroom 3	3.05m x 3.53m	10'0" x 11'7"
Bedroom 4	3.16m x 2.40m	10'4" x 7'10"
Bathroom	2.07m x 2.40m	6'9" x 7'10"



Ground Floor		
Kitchen/Dining	5.33m x 3.45m	17'6" x 11'4"
Family	3.12m x 3.11m	10'3" x 10'3"
Living Room	3.05m x 4.85m	10'0" x 15'11"
Cloakroom	0.90m x 1.63m	3'0" x 5'4"
Garage	3.05m x 6.05m	10'0" x 19'10"

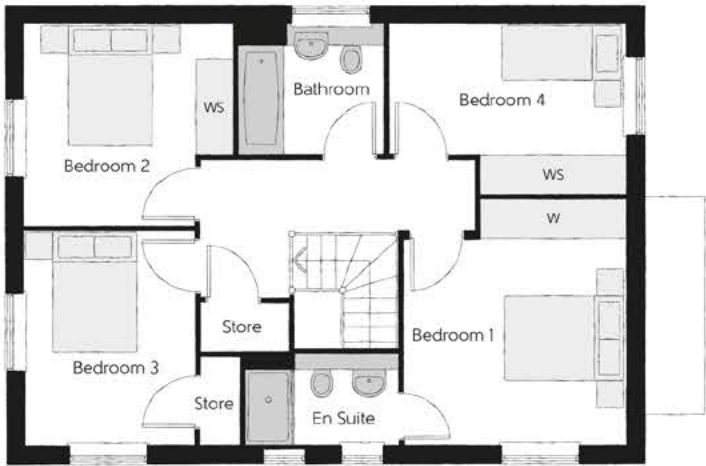
Clks - Cloakroom WS - Wardrobe Space (suggestion only, wardrobe not included)

Furniture arrangements are for illustrative purposes only. Items are not included, nor to scale.
The items shown in this key may be subject to change, and positions could vary from those indicated on this floorplan. Please refer to Sales Advisor for details of your selected plot. Computer generated image shown overleaf. External finishes, landscaping and configuration may vary from plot to plot. Please refer to Sales Advisor for further details. All dimensions are approximate and should not be used for carpet sizes, appliance spaces or furniture. We operate a policy of continuous improvement and individual features such as kitchen and bathroom layouts, doors, windows, garages and elevational treatments may vary from time to time. Consequently these particulars should be treated as general guidance only and do not constitute a contract, part of a contract or a warranty. CU/CB/500/S00/D/02/Q.



The BowyerLife

FOUR BEDROOM HOME



First Floor		
Bedroom 1	3.41m x 3.83m	11'2" x 12'7"
Bedroom 1 En Suite	2.40m x 1.43m	7'10" x 4'8"
Bedroom 2	3.50m x 3.11m	11'6" x 10'3"
Bedroom 3	2.66m x 3.33m	8'9" x 10'11"
Bedroom 4	3.41m x 2.62m	11'2" x 8'7"
Bathroom	2.27m x 1.99m	7'5" x 6'6"



Ground Floor		
Kitchen/Dining	4.14m x 6.54m	13'7" x 21'5"
Living Room	3.34m x 6.54m	10'11" x 21'5"
Utility	2.37m x 1.64m	7'9" x 5'4"
Cloakroom	2.37m x 1.43m	7'9" x 4'8"

Clks - Cloakroom WS - Wardrobe Space (suggestion only, wardrobe not included)

Furniture arrangements are for illustrative purposes only. Items are not included, nor to scale.

The items shown in this key may be subject to change, and positions could vary from those indicated on this floorplan. Please refer to Sales Advisor for details of your selected plot. Computer generated image shown overleaf. External finishes, landscaping and configuration may vary from plot to plot. Please refer to Sales Advisor for further details. All dimensions are approximate and should not be used for carpet sizes, appliance spaces or furniture. We operate a policy of continuous improvement and individual features such as kitchen and bathroom layouts, doors, windows, garages and elevational treatments may vary from time to time. Consequently these particulars should be treated as general guidance only and do not constitute a contract, part of a contract or a warranty. BO/CB/500/S00/D/01/K.



The Philosopher

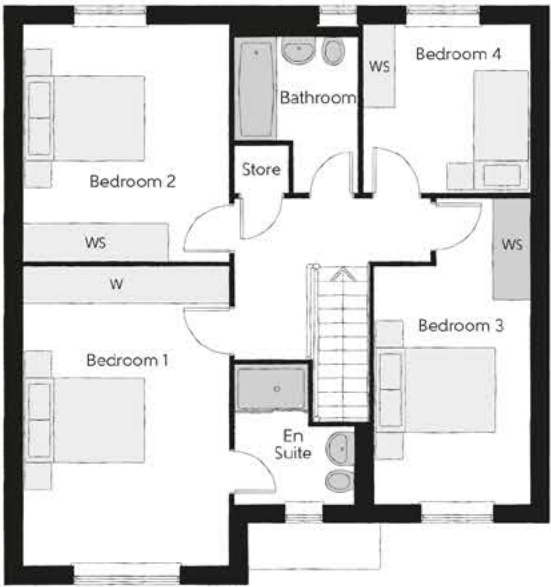
FOUR BEDROOM HOME



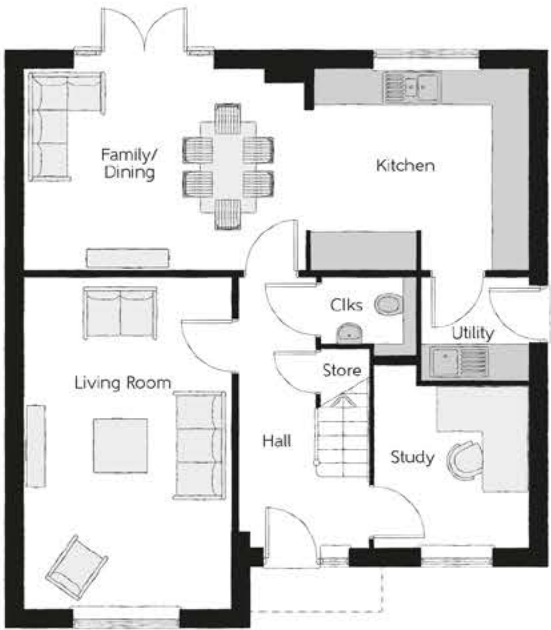
Bellway

The Philosopher

Four bedroom home



First Floor		
Bedroom 1	3.39m x 4.92m	11'1" x 16'2"
Bedroom 1 En Suite	2.23m x 2.27m (max)	7'4" x 7'5" (max)
Bedroom 2	3.39m x 3.89m	11'1" x 12'9"
Bedroom 3	2.55m x 5.03m (max)	8'4" x 16'6" (max)
Bedroom 4	2.75m x 2.76m	9'0" x 9'1"
Bathroom	2.02m x 2.76m (max)	6'8" x 9'1" (max)



Ground Floor		
Kitchen	3.71m x 3.30m	12'2" x 10'10"
Family/Dining	4.63m x 3.30m	15'2" x 10'10"
Living Room	3.39m x 5.45m	11'1" x 17'11"
Study	2.55m x 3.03m (max)	8'4" x 9'11" (max)
Utility	1.78m x 1.71m	5'10" x 5'7"
Cloakroom	1.57m x 1.32m (max)	5'2" x 4'4" (max)

Clks - Cloakroom WS - Wardrobe Space (suggestion only, wardrobe not included)

Furniture arrangements are for illustrative purposes only. Items are not included, nor to scale.
The items shown in this key may be subject to change, and positions could vary from those indicated on this floorplan. Please refer to Sales Advisor for details of your selected plot. Computer generated image shown overleaf. External finishes, landscaping and configuration may vary from plot to plot. Please refer to Sales Advisor for further details. All dimensions are approximate and should not be used for carpet sizes, appliance spaces or furniture. We operate a policy of continuous improvement and individual features such as kitchen and bathroom layouts, doors, windows, garages and elevational treatments may vary from time to time. Consequently these particulars should be treated as general guidance only and do not constitute a contract, part of a contract or a warranty. PH/CB/500/S00/D/02/H.



The Weaver

FOUR BEDROOM HOME



Bellway

The Weaver

Four bedroom home



First Floor		
Bedroom 1	3.43m x 3.50m	11'3" x 11'6"
Dressing Area	2.01m x 2.91m	6'7" x 9'7"
Bedroom 1 En Suite	2.36m x 1.91m	7'9" x 6'3"
Bedroom 2	3.51m x 3.31m	11'6" x 10'10"
Bedroom 2 En Suite	2.24m x 1.40m	7'4" x 4'7"
Bedroom 3	3.51m x 2.91m	11'6" x 9'7"
Bedroom 4	3.19m x 2.73m	10'6" x 8'11"
Bathroom	3.19m x 2.10m	10'6" x 6'11"



Ground Floor		
Kitchen/Dining	5.52m x 6.18m (max) (max)	18'1" x 20'3" (max) (max)
Family	3.21m x 3.59m	10'6" x 11'9"
Living Room	3.45m x 6.31m	11'4" x 20'8"
Utility	1.91m x 1.71m	6'3" x 5'7"
Cloakroom	0.90m x 1.94m	3'0" x 6'4"

Clks - Cloakroom WS - Wardrobe Space (suggestion only, wardrobe not included)

Furniture arrangements are for illustrative purposes only. Items are not included, nor to scale.
The items shown in this key may be subject to change, and positions could vary from those indicated on this floorplan. Please refer to Sales Advisor for details of your selected plot. Computer generated image shown overleaf. External finishes, landscaping and configuration may vary from plot to plot. Please refer to Sales Advisor for further details. All dimensions are approximate and should not be used for carpet sizes, appliance spaces or furniture. We operate a policy of continuous improvement and individual features such as kitchen and bathroom layouts, doors, windows, garages and elevational treatments may vary from time to time. Consequently these particulars should be treated as general guidance only and do not constitute a contract, part of a contract or a warranty. WE/CB/500/S00/D/01/K.



The Reedmaker

FOUR BEDROOM HOME



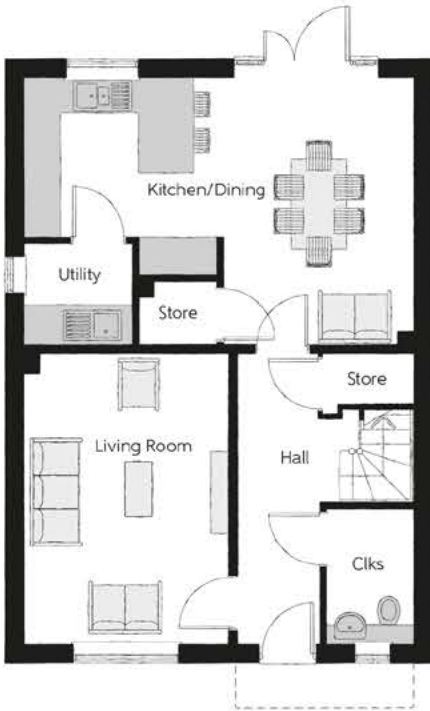
Bellway

The Reedmaker

Four bedroom home



First Floor		
Bedroom 1	3.19m x 3.78m (max)	10'5" x 12'5" (max)
Dressing Area	1.56m x 2.05m	5'1" x 6'9"
Bedroom 1 En Suite	1.53m x 2.05m	5'0" x 6'9"
Bedroom 2	2.73m x 3.35m	9'0" x 11'0"
Bedroom 3	3.60m x 2.25m	11'10" x 7'4"
Bedroom 4	3.40m x 2.22m	11'2" x 7'4"
Bathroom	1.98m x 2.15m	6'6" x 7'1"



Ground Floor		
Kitchen/Dining	6.42m x 4.42m (max)	21'1" x 14'6" (max)
Living Room	3.39m x 4.77m (max)	11'1" x 15'8" (max)
Utility	1.78m x 1.61m	5'10" x 5'3"
Cloakroom	1.46m x 2.22m	4'10" x 7'4"

Clks - Cloakroom WS - Wardrobe Space (suggestion only, wardrobe not included)

Furniture arrangements are for illustrative purposes only. Items are not included, nor to scale.

The items shown in this key may be subject to change, and positions could vary from those indicated on this floorplan. Please refer to Sales Advisor for details of your selected plot. Computer generated image shown overleaf. External finishes, landscaping and configuration may vary from plot to plot. Please refer to Sales Advisor for further details. All dimensions are approximate and should not be used for carpet sizes, appliance spaces or furniture. We operate a policy of continuous improvement and individual features such as kitchen and bathroom layouts, doors, windows, garages and elevational treatments may vary from time to time. Consequently these particulars should be treated as general guidance only and do not constitute a contract, part of a contract or a warranty. RE/CB/500/S00/D/01/G.



The Watchmaker

FIVE BEDROOM HOME



Bellway

The Watchmaker

Five bedroom home



First Floor		
Bedroom 1	3.62m x 4.46m (max)	11'11" x 14'8" (max)
Bedroom 1 En Suite	2.59m x 1.41m	8'6" x 4'8"
Bedroom 2	3.62m x 3.35m (max)	11'11" x 11'0" (max)
Bedroom 2 En Suite	2.76m x 1.41m	9'1" x 4'8"
Bedroom 3	3.80m x 3.39m (max)	12'6" x 11'2" (max)
Bedroom 4	3.62m x 3.78m (max)	11'11" x 12'5" (max)
Bedroom 5	2.94m x 2.98m	9'8" x 9'10"
Bathroom	2.76m x 2.68m	9'1" x 8'10"



Ground Floor		
Kitchen	3.70m x 3.65m	12'2" x 12'0"
Dining	2.96m x 3.43m	9'9" x 11'3"
Family	3.70m x 3.65m	12'2" x 12'0"
Living Room	3.90m x 4.54m	12'10" x 14'11"
Study	3.56m x 2.74m	11'8" x 9'0"
Utility	2.10m x 1.65m	6'11" x 5'5"
Cloakroom	1.37m x 1.65m	4'6" x 5'5"

Ckls - Cloakroom WS - Wardrobe Space (suggestion only, wardrobe not included) W - Fitted Wardrobe ----- Reduced Head Height

Furniture arrangements are for illustrative purposes only. Items are not included, nor to scale.
The items shown in this key may be subject to change, and positions could vary from those indicated on this floorplan. Please refer to Sales Advisor for details of your selected plot. Computer generated image shown overleaf. External finishes, landscaping and configuration may vary from plot to plot. Please refer to Sales Advisor for further details. All dimensions are approximate and should not be used for carpet sizes, appliance spaces or furniture. We operate a policy of continuous improvement and individual features such as kitchen and bathroom layouts, doors, windows, garages and elevational treatments may vary from time to time. Consequently these particulars should be treated as general guidance only and do not constitute a contract, part of a contract or a warranty. WA/CB/500/S00/D/01/G.



The Draper

FIVE BEDROOM HOME



Bellway

The Draper

Five bedroom home



First Floor		
Bedroom 1	4.96m x 4.44m (inc. bay)	16'3" x 14'7" (inc. bay)
Dressing Area	2.46m x 2.48m	8'1" x 8'2"
Bedroom 1 En Suite	2.46m x 1.91m	8'1" x 6'3"
Bedroom 2	5.04m x 3.29m (max)	16'6" x 10'10" (max)
Bedroom 2 En Suite	1.95m x 2.46m	6'5" x 8'1"
Bedroom 3	3.71m x 3.63m	12'2" x 11'11"
Bedroom 3 En Suite	1.61m x 2.28m	5'3" x 7'6"
Bedroom 4	3.95m x 3.42m (max)	13'0" x 11'3" (max)
Bedroom 5/Study	2.41m x 3.50m (max)	7'11" x 11'6" (max)
Bathroom	1.92m x 2.46m	6'3" x 8'1"



Ground Floor		
Kitchen/Dining	5.54m x 4.94m (max)	18'2" x 16'2" (max)
Family	5.05m x 3.64m (max)	16'7" x 11'11" (max)
Living Room	4.96m x 5.23m (inc. bay)	16'3" x 17'2" (inc. bay)
Utility	1.71m x 3.02m	5'7" x 9'11"
Cloakroom	0.90m x 1.98m	2'11" x 6'6"
Garage	4.97m x 6.05m (max)	16'3" x 19'10" (max)

Clks - Cloakroom WS - Wardrobe Space (suggestion only, wardrobe not included) W - Fitted Wardrobe

Furniture arrangements are for illustrative purposes only. Items are not included, nor to scale.

The items shown in this key may be subject to change, and positions could vary from those indicated on this floorplan. Please refer to Sales Advisor for details of your selected plot. Computer generated image shown overleaf. External finishes, landscaping and configuration may vary from plot to plot. Please refer to Sales Advisor for further details. All dimensions are approximate and should not be used for carpet sizes, appliance spaces or furniture. We operate a policy of continuous improvement and individual features such as kitchen and bathroom layouts, doors, windows, garages and elevational treatments may vary from time to time. Consequently these particulars should be treated as general guidance only and do not constitute a contract, part of a contract or a warranty. DR/CB/500/S00/D/01/N.

Chalkhill Blue



Chalkhill Blue development plan





The Coiner

TWO BEDROOM HOME



Bellway

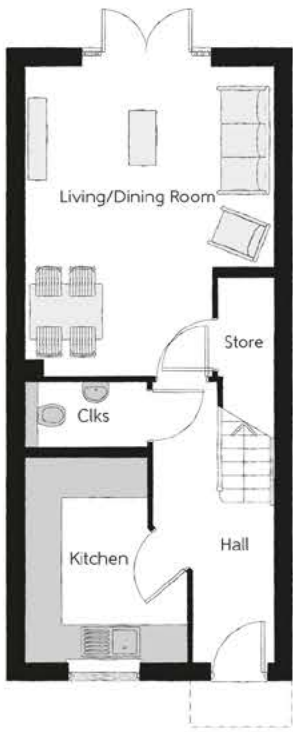
The Coiner

Two bedroom home



First Floor

Bedroom 1	4.08m x 3.11m <small>(max) (max)</small>	13'5" x 10'2" <small>(max) (max)</small>
Bedroom 1 En Suite	2.00m x 1.41m	6'7" x 4'8"
Bedroom 2	4.08m x 2.85m	13'5" x 9'4"
Bathroom	2.00m x 2.16m	6'7" x 7'1"



Ground Floor

Kitchen	2.65m x 3.35m <small>(max) (max)</small>	8'8" x 11'0" <small>(max) (max)</small>
Living/Dining Room	4.08m x 5.12m <small>(max) (max)</small>	13'5" x 16'10" <small>(max) (max)</small>
Cloakroom	1.99m x 1.09m	6'6" x 3'7"

Clks - Cloakroom WS - Wardrobe Space (suggestion only, wardrobe not included)

Furniture arrangements are for illustrative purposes only. Items are not included, nor to scale.
The items shown in this key may be subject to change, and positions could vary from those indicated on this floorplan. Please refer to Sales Advisor for details of your selected plot. Computer generated image shown overleaf. External finishes, landscaping and configuration may vary from plot to plot. Please refer to Sales Advisor for further details. All dimensions are approximate and should not be used for carpet sizes, appliance spaces or furniture. We operate a policy of continuous improvement and individual features such as kitchen and bathroom layouts, doors, windows, garages and elevational treatments may vary from time to time. Consequently these particulars should be treated as general guidance only and do not constitute a contract, part of a contract or a warranty. CN/CB/500/S00/S/01/C.



The Webster

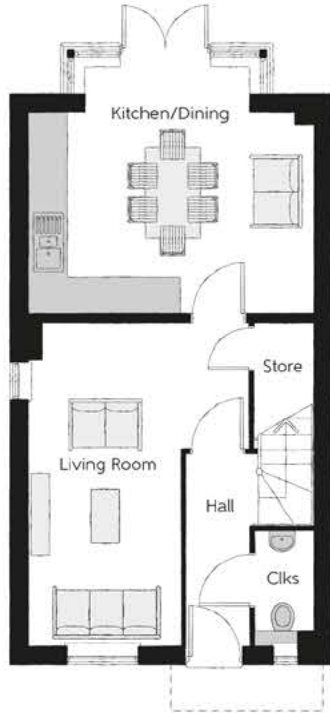
THREE BEDROOM HOME



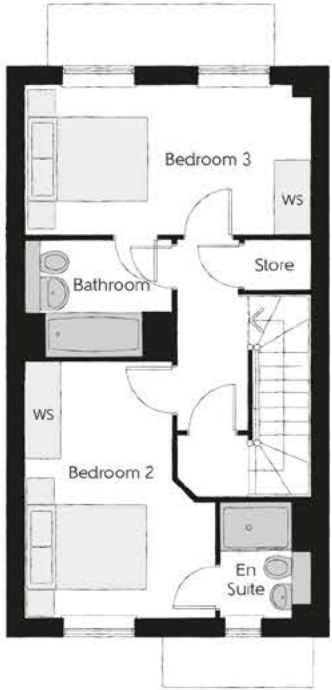
Bellway



Second Floor		
Bedroom 1	3.63m x 4.89m	11'11" x 16'1"
Dressing Area	2.28m x 2.20m	7'6" x 7'3"
Bedroom 1 En Suite	2.30m x 2.30m	7'7" x 7'7"



First Floor		
Bedroom 2	3.13m x 4.21m	10'3" x 13'10"
Bedroom 2 En Suite	1.45m x 1.90m	4'9" x 6'3"
Bedroom 3	4.67m x 2.47m	15'4" x 8'1"
Bathroom	2.38m x 1.93m	7'10" x 6'4"



Ground Floor		
Kitchen/Dining	4.67m x 4.10m	15'4" x 13'5"
Living Room	3.63m x 5.33m	11'11" x 17'6"
Cloakroom	0.95m x 1.90m	3'1" x 6'3"

Clks - Cloakroom WS - Wardrobe Space (suggestion only, wardrobe not included)

Furniture arrangements are for illustrative purposes only. Items are not included, nor to scale.

The items shown in this key may be subject to change, and positions could vary from those indicated on this floorplan. Please refer to Sales Advisor for details of your selected plot. Computer generated image shown overleaf. External finishes, landscaping and configuration may vary from plot to plot. Please refer to Sales Advisor for further details. All dimensions are approximate and should not be used for carpet sizes, appliance spaces or furniture. We operate a policy of continuous improvement and individual features such as kitchen and bathroom layouts, doors, windows, garages and elevational treatments may vary from time to time. Consequently these particulars should be treated as general guidance only and do not constitute a contract, part of a contract or a warranty.



The Thespian

THREE BEDROOM HOME



Bellway



First Floor

Bedroom 1	2.95m x 3.56m	9'8" x 11'8"
Bedroom 1 En Suite	2.95m x 1.20m	9'8" x 3'11"
Bedroom 2	3.17m x 2.39m	10'5" x 7'10"
Bedroom 3	3.17m x 2.37m	10'5" x 7'9"
Bathroom	1.92m x 1.90m	6'4" x 6'3"



Ground Floor

Kitchen/Dining	3.11m x 4.85m	10'3" x 15'11"
Living Room	3.48m x 4.85m (max)	11'5" x 15'11" (max)
Cloakroom	1.92m x 0.96m	6'4" x 3'2"

Clks - Cloakroom WS - Wardrobe Space (suggestion only, wardrobe not included)

Furniture arrangements are for illustrative purposes only. Items are not included, nor to scale.

The items shown in this key may be subject to change, and positions could vary from those indicated on this floorplan. Please refer to Sales Advisor for details of your selected plot. Computer generated image shown overleaf. External finishes, landscaping and configuration may vary from plot to plot. Please refer to Sales Advisor for further details. All dimensions are approximate and should not be used for carpet sizes, appliance spaces or furniture. We operate a policy of continuous improvement and individual features such as kitchen and bathroom layouts, doors, windows, garages and elevational treatments may vary from time to time. Consequently these particulars should be treated as general guidance only and do not constitute a contract, part of a contract or a warranty. TH/CB/500/S00/D/01a/L.



The Harper

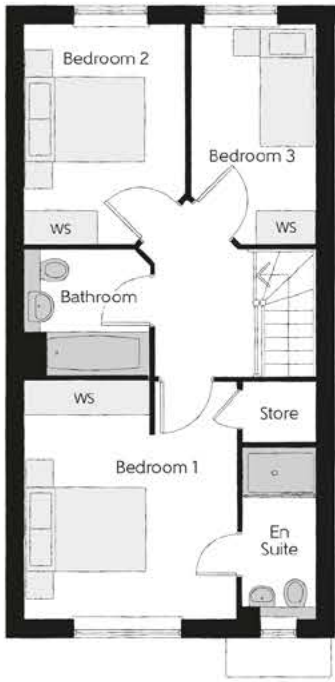
THREE BEDROOM HOME



Bellway

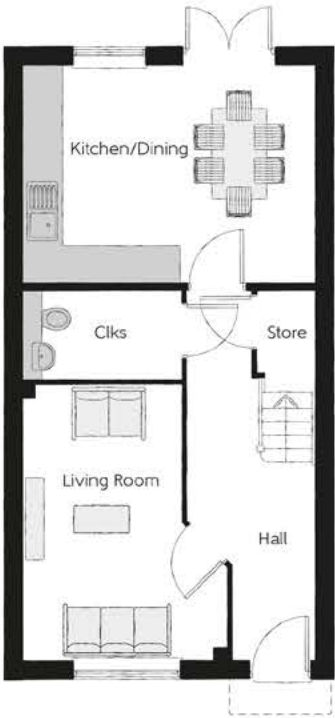
The Harper

Three bedroom home



First Floor

Bedroom 1	3.40m x 3.90m (max)	11'2" x 12'10" (max)
Bedroom 1 En Suite	1.20m x 2.81m	3'11" x 9'3"
Bedroom 2	2.66m x 3.62m	8'9" x 11'11"
Bedroom 3	2.06m x 3.62m	6'9" x 11'11"
Bathroom	2.00m x 2.00m (max)	6'7" x 6'7" (max)



Ground Floor

Kitchen/Dining	4.80m x 3.40m	15'9" x 11'2"
Living Room	3.36m x 4.55m (max)	11'0" x 14'11" (max)
Cloakroom	2.61m x 1.46m	8'7" x 4'10"

Clks - Cloakroom WS - Wardrobe Space (suggestion only, wardrobe not included)

Furniture arrangements are for illustrative purposes only. Items are not included, nor to scale.

The items shown in this key may be subject to change, and positions could vary from those indicated on this floorplan. Please refer to Sales Advisor for details of your selected plot. Computer generated image shown overleaf. External finishes, landscaping and configuration may vary from plot to plot. Please refer to Sales Advisor for further details. All dimensions are approximate and should not be used for carpet sizes, appliance spaces or furniture. We operate a policy of continuous improvement and individual features such as kitchen and bathroom layouts, doors, windows, garages and elevational treatments may vary from time to time. Consequently these particulars should be treated as general guidance only and do not constitute a contract, part of a contract or a warranty. HA/CB/500/S00/S/01/E.



The Philosopher

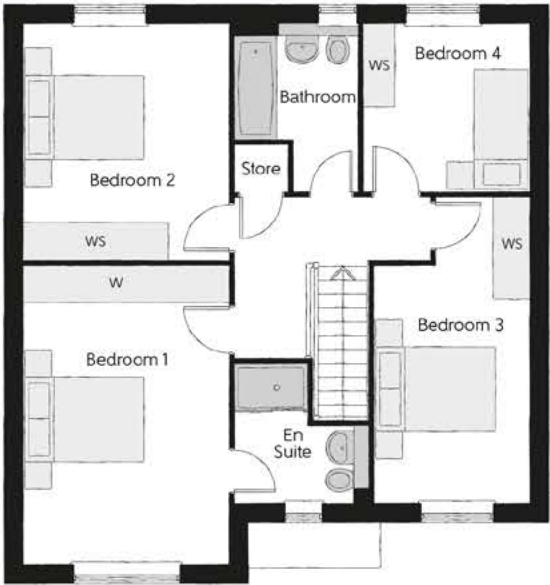
FOUR BEDROOM HOME



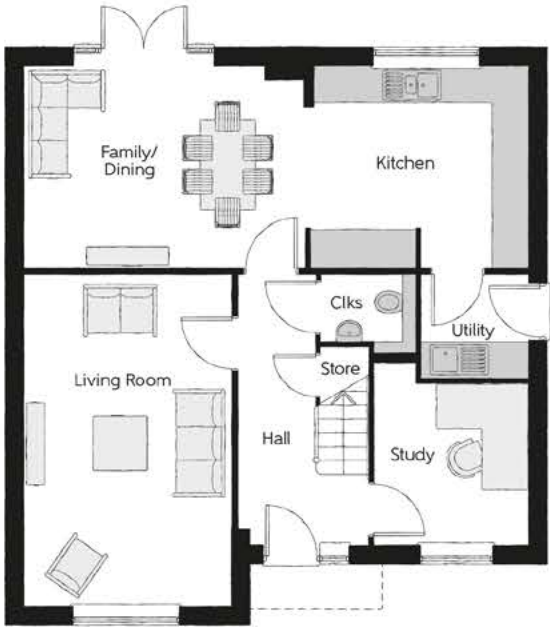
Bellway

The Philosopher

Four bedroom home



First Floor		
Bedroom 1	3.39m x 4.90m	11'1" x 16'1"
Bedroom 1 En Suite	2.24m x 2.15m (max) (max)	7'4" x 7'1" (max) (max)
Bedroom 2	3.39m x 3.91m	11'1" x 12'10"
Bedroom 3	2.54m x 3.91m (max)	8'4" x 12'10" (max)
Bedroom 4	2.67m x 2.81m	8'9" x 9'3"
Bathroom	2.10m x 2.81m (max) (max)	6'11" x 9'3" (max) (max)



Ground Floor		
Kitchen	3.71m x 3.00m	12'2" x 9'10"
Family/Dining	4.62m x 3.80m	15'2" x 12'6"
Living Room	3.39m x 4.95m	11'1" x 16'3"
Study	2.54m x 2.61m (max)	8'4" x 8'7" (max)
Utility	1.84m x 2.04m	6'0" x 6'8"
Cloakroom	1.50m x 1.91m (max)	4'11" x 6'3" (max)

Clks - Cloakroom WS - Wardrobe Space (suggestion only, wardrobe not included) W - Fitted Wardrobe

Furniture arrangements are for illustrative purposes only. Items are not included, nor to scale.
The items shown in this key may be subject to change, and positions could vary from those indicated on this floorplan. Please refer to Sales Advisor for details of your selected plot. Computer generated image shown overleaf. External finishes, landscaping and configuration may vary from plot to plot. Please refer to Sales Advisor for further details. All dimensions are approximate and should not be used for carpet sizes, appliance spaces or furniture. We operate a policy of continuous improvement and individual features such as kitchen and bathroom layouts, doors, windows, garages and elevational treatments may vary from time to time. Consequently these particulars should be treated as general guidance only and do not constitute a contract, part of a contract or a warranty. PH/CB/500/S00/D/02/H.



The Reedmaker

FOUR BEDROOM HOME



Bellway

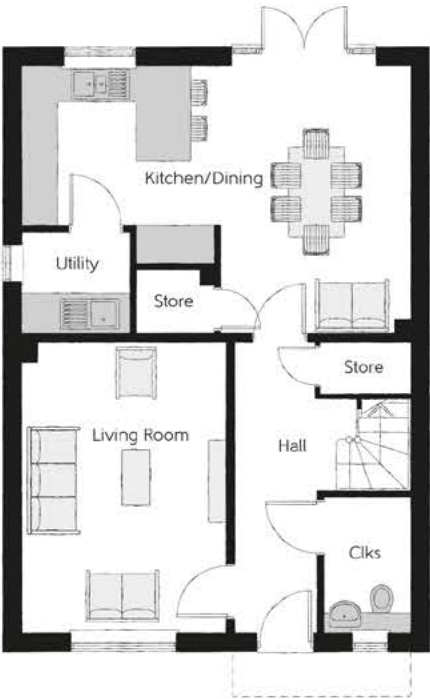
The Reedmaker

Four bedroom home



First Floor

Bedroom 1	3.18m x 3.77m	10'5" x 12'4"
Bedroom 1 En Suite	1.54m x 2.05m	5'1" x 6'9"
Bedroom 1 Dressing	1.53m x 2.05m	5'0" x 6'9"
Bedroom 2	3.18m x 3.35m	10'5" x 11'0"
Bedroom 3	3.60m x 2.25m	11'10" x 7'5"
Bedroom 4	3.37m x 2.22m	11'1" x 7'3"
Bathroom	1.98m x 2.15m	6'6" x 7'1"



Ground Floor

Kitchen/Dining	6.42m x 4.42m (max)	21'1" x 14'6" (max)
Living Room	3.38m x 4.77m	11'1" x 15'8"
Utility	1.78m x 1.61m	5'10" x 5'3"
Cloakroom	1.46m x 2.22m	4'10" x 7'4"

Ciks - Cloakroom W - Fitted Wardrobe WS - Wardrobe Space (suggestion only, wardrobe not included)

Furniture arrangements are for illustrative purposes only. Items are not included, nor to scale.

The items shown in this key may be subject to change, and positions could vary from those indicated on this floorplan. Please refer to Sales Advisor for details of your selected plot. Computer generated image shown overleaf. External finishes, landscaping and configuration may vary from plot to plot. Please refer to Sales Advisor for further details. All dimensions are approximate and should not be used for carpet sizes, appliance spaces or furniture. We operate a policy of continuous improvement and individual features such as kitchen and bathroom layouts, doors, windows, garages and elevational treatments may vary from time to time. Consequently these particulars should be treated as general guidance only and do not constitute a contract, part of a contract or a warranty. RE/CB/500/S00/D/01/G.



The Bowyer

FOUR BEDROOM HOME



Bellway

The Bowyer

Four bedroom home



First Floor

Bedroom 1	3.41m x 3.83m (max) (max)	11'2" x 12'7" (max) (max)
Bedroom 1 En Suite	2.40m x 1.43m	7'10" x 4'8"
Bedroom 2	3.28m x 3.13m (max) (max)	10'9" x 10'3" (max) (max)
Bedroom 3	2.66m x 3.33m (max) (max)	8'9" x 10'11" (max) (max)
Bedroom 4	3.60m x 2.62m	11'10" x 8'7"
Bathroom	2.27m x 1.99m (max) (max)	7'5" x 6'6" (max) (max)



Ground Floor

Kitchen/Dining	4.14m x 6.54m (inc. bay) (inc. bay)	13'7" x 21'5" (inc. bay) (inc. bay)
Living Room	3.34m x 6.54m	10'11" x 21'5"
Utility	2.37m x 1.64m	7'9" x 5'5"
Cloakroom	2.37m x 1.43m	7'9" x 4'8"

Ciks - Cloakroom W - Fitted Wardrobe WS - Wardrobe Space (suggestion only, wardrobe not included)

Furniture arrangements are for illustrative purposes only. Items are not included, nor to scale.

The items shown in this key may be subject to change, and positions could vary from those indicated on this floorplan. Please refer to Sales Advisor for details of your selected plot. Computer generated image shown overleaf. External finishes, landscaping and configuration may vary from plot to plot. Please refer to Sales Advisor for further details. All dimensions are approximate and should not be used for carpet sizes, appliance spaces or furniture. We operate a policy of continuous improvement and individual features such as kitchen and bathroom layouts, doors, windows, garages and elevational treatments may vary from time to time. Consequently these particulars should be treated as general guidance only and do not constitute a contract, part of a contract or a warranty. BO/CB/500/S00/D/01/K.



Dedicated to delivering quality

An enhanced specification is the hallmark of The Artisan Collection.

All of our homes are equipped with superior fixtures and fittings, which dovetails perfectly with our focus on design and attention to detail.

Expertly crafted using state-of-the-art materials, your brand new home is finished to a high standard so you can start enjoying it the moment you get your keys.

"The overall finish of the home is perfect – Bellway really pay attention to every detail. The team were amazing and supported us throughout the process."

SAMI AND SARA,
HANWOOD PARK

Homes to love, built with care

From the first day you visit our sales centre, to the day you move in and beyond, we aim to provide a level of service and after-sales care that is second to none.

A number of quality checks are carried out on each of our new homes through the construction process and on completion. Once your home has passed all of our quality checks, you will be invited to attend your Home Demonstration which will provide an opportunity for you to understand the various elements of your new home. On move in day, our site and sales teams will be there to ensure that everything goes as smoothly as possible.

Once you've settled into your new home, Bellway has experienced after-sales teams to provide support and assistance whenever you need it. Our homes come with a 10-year NHBC Buildmark policy, or an equivalent warranty from another provider. This includes deposit protection from exchange of contracts, a two-year builder warranty from legal completion, and then eight years of structural defects insurance cover.*

We are confident that our approach to building and selling quality homes, coupled with our customer care processes, will provide you with many years of enjoyment in your new home.



*For more details, visit the NHBC website at www.nhbc.co.uk/homeowners and view the 'Welcome to NHBC warranty and insurance' brochure, or refer to the brochure of your alternative warranty provider.



How to find us



Bellway abides by the New Homes Quality Code (NHQC), an independent industry code established to champion quality new homes and deliver better outcomes for customers.

Bellway

