



Elizabeth Square

Elizabeth Square is a development of 2, 3 and 4-bedroom homes and 2-bedroom apartments homes, located in Goring-by-Sea, West Sussex.



THE
ARTISAN
COLLECTION

Bellway



Connected to city and sea

The ideal location for those who value quality of life

The development benefits from a range of essential amenities close by. The nearest supermarket is just seven minutes away by road, while Goring’s bustling centre is within walking distance and offers a selection of shops, cafés, pubs and eateries.

It’s also possible to cycle to the beach in around five minutes where, in addition to blissful walks along this beautiful swathe of sand and shingle, you can find seafront cafés, beach huts and a wide variety of water sports.

Cycle east along the beach promenade and you will arrive at Worthing Pleasure Pier in around 10 minutes. The centre of this popular town can also be reached in around 10 minutes by car from Elizabeth Square and features a wide range of high-street shops, restaurants and bars that can cater for most tastes.

This is complemented by plenty of local leisure and entertainment. Aside from the pier’s amusements, there is a cinema in the town, along with a bowling alley and a choice of local theatres offering a calendar of regular drama, comedy and music.

Those who like to stay active will love Worthing Leisure Centre and West Ground Recreation Park, which are located a stone’s throw from Elizabeth Square.

Additionally, the spectacular South Downs National Park is just a few minutes away.

Education is also abundant in the area. West Park Church of England Primary School can be found a short walk away from Elizabeth Square and there is a choice of other schools ranging from primary through to sixth form all within a 10-minute drive.

Moving further afield, the city of Brighton is around 40 minutes away by car and as little as 30 minutes by rail. Here you can find a seemingly endless selection of shopping, food, entertainment and nightlife – not to mention the fantastic shingle beach.

This is made possible by Elizabeth Square’s outstanding travel connections. By road, the nearby A27 provides an uninterrupted route along the coast from Portsmouth to Eastbourne, connecting with the M27, A3(M) and A23 along the way. Alternatively, the A24 heads north all the way to the M25, opening a gateway to the national motorway network.

By rail, Durrington-on-Sea Station is within walking distance and, in addition to Brighton, operates services to Worthing, Gatwick Airport and London in 5, 50 and 90 minutes, respectively.

The choice is yours

Discover a broad range of homes to suit many lifestyles

Elizabeth Square is a delightful development of 1, 2, 3 and 4 bedroom homes located in Goring-by-Sea, just minutes from the centre of Worthing. Each home has been created to provide energy

efficiency, versatility and comfort, with interiors that maximise space and light, allocated parking and electric vehicle charging points.





Development plan



1 & 2 Bedroom Apartments

- Coronation House
Plots 140-168
- Jubilee House
Plots 169-197
- Majesty House
Plots 198-249
- Imperial House
Plots 250-272

2 Bedroom Homes

- The Potter
Plots 17, 18, 19, 20, 44, 45, 50, 51, 58, 59, 60, 84, 85, 86, 87, 90, 91, 92, 93, 96, 97, 98, 99, 100, 101, 103, 104 & 105
- The Mariner
Plots 12, 13, 14, 15, 110, 111, 112, 117, 118, 121, 122, 131, 132, 135, 136, 137, & 138

3 Bedroom Homes

- The Gilder
Plots 4, 6, 11, 21, 22, 23, 24, 25, 26, 27, 28, 125, 126, 127, 128
- The Wainwright
Plots 7, 8, 9 & 10
- The Mason
Plots 34, 35, 36 & 57
- The Hillard
Plots 66, 67, 70, 71, 72, 73, 76, 77, 108, 109, 113 & 114
- The Blemmere
Plots 5, 42, 56, 89, 107 & 115
- The Harper
Plots 16, 43, 46, 47, 48, 49 & 52
- The Turner
Plots 61, 62, 63, 64, 68, 69, 74, 75, 88, 106, 116, 119, 120, 123, 130, 133, 134 & 139

4 Bedroom Homes

- The Philosopher
Plots 1, 2, 32 & 55
- The Bowyer
Plots 3, 29, 33, 40, 53, 54, 65, 83, 102, 124 & 129
- The Scrivener
Plots 30, 31, 37, 38, 39 & 41

2-3 Bedroom Homes

- Affordable Homes

The site plan is drawn to show the relative position of individual properties. NOT TO SCALE. This is a two dimensional drawing and will not show land contours and gradients, boundary treatments, landscaping or local authority street lighting. Footpaths subject to change. For details of individual properties and availability please refer to our Sales Advisor.

Key to plan

- s/s Sub station
- v Visitor parking
- P Parking
- b/s Bin store
- bcg Bin collection point
- LEAP Local Equipped Area for Play



The Blemmere

THREE BEDROOM HOME

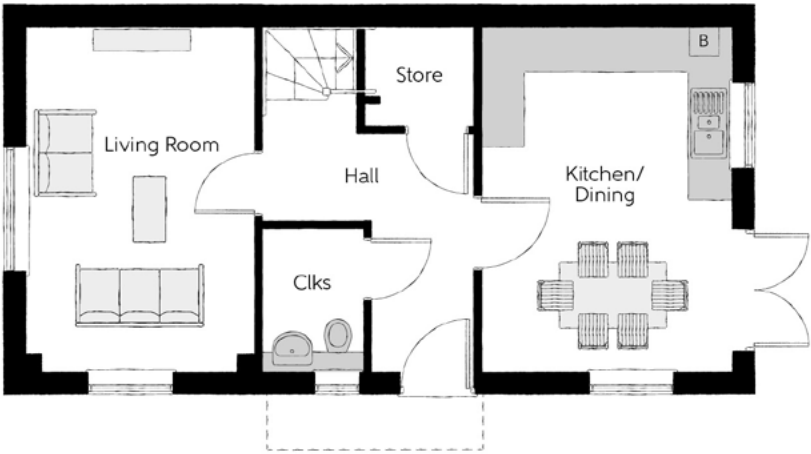


Bellway



First Floor

Bedroom 1	3.50m x 4.00m (max)	11'6" x 13'1" (max)
Bedroom 1 En Suite	1.20m x 2.83m	3'11" x 9'11"
Bedroom 2	2.55m x 4.59m	8'4" x 15'1"
Bedroom 3	2.15m x 3.49m	7'1" x 11'6"
Bathroom	2.20m x 1.98m	7'3" x 6'7"



Ground Floor

Kitchen/Dining	4.79m x 3.49m	15'9" x 11'6"
Living Room	4.79m x 3.16m	15'9" x 10'4"
Cloakroom	2.03m x 1.43m	6'8" x 4'8"

Clks - Cloakroom W - Fitted Wardrobe WS - Wardrobe Space (suggestion only, wardrobe not included) B - Boiler

Furniture arrangements are for illustrative purposes only. Items are not included, nor to scale.

The items shown in this key may be subject to change, and positions could vary from those indicated on this floorplan. Please refer to Sales Advisor for details of your selected plot. Computer generated image shown overleaf. External finishes, landscaping and configuration may vary from plot to plot. Please refer to Sales Advisor for further details. All dimensions are approximate and should not be used for carpet sizes, appliance spaces or furniture. We operate a policy of continuous improvement and individual features such as kitchen and bathroom layouts, doors, windows, garages and elevational treatments may vary from time to time. Consequently these particulars should be treated as general guidance only and do not constitute a contract, part of a contract or a warranty. BM/CB/415/S00/S/02/C.



The Bowyer

FOUR BEDROOM HOME



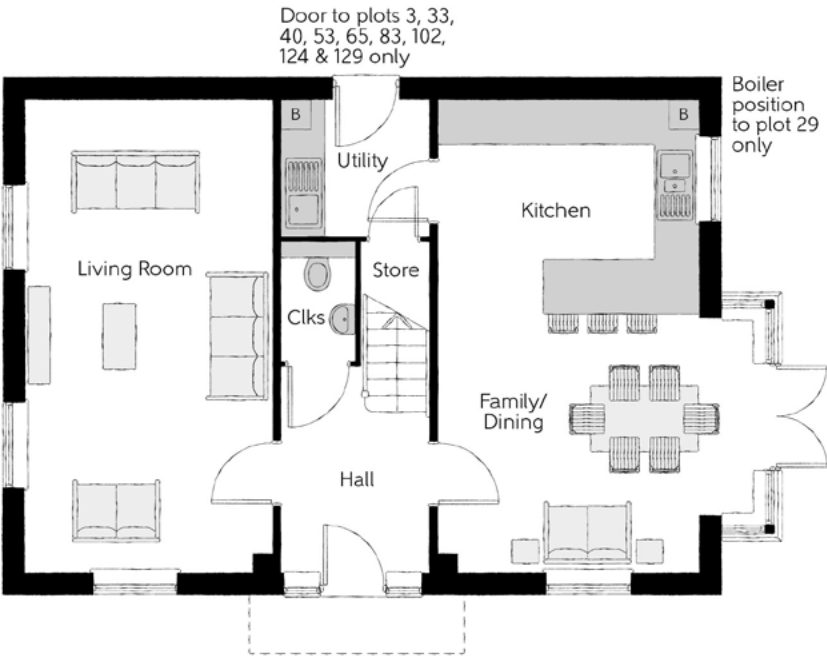
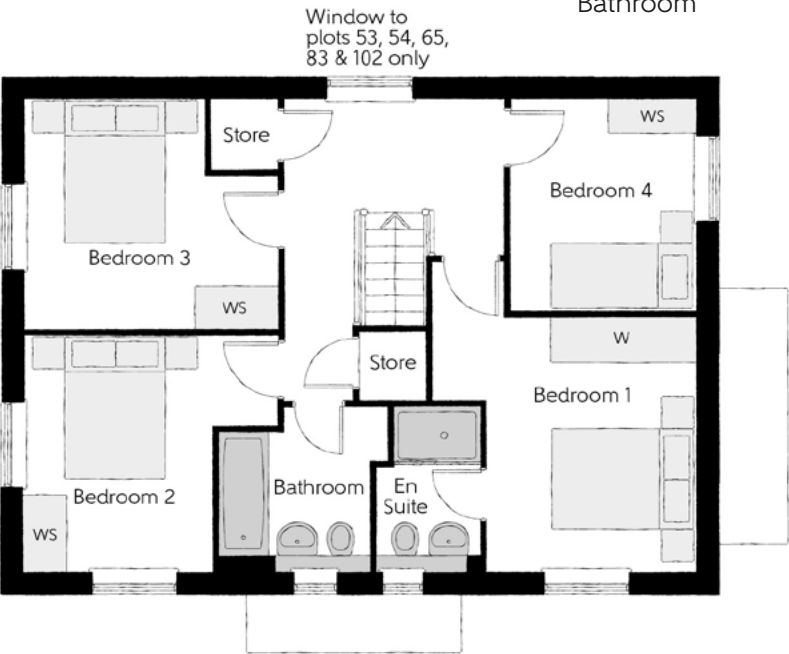
Bellway

The Bowyer

Four bedroom home

First Floor

Bedroom 1	3.66m x 3.52m (max) (max)	12'0" x 11'7" (max) (max)
Bedroom 1 En Suite	1.44m x 2.25m	4'9" x 7'5"
Bedroom 2	3.53m x 3.27m (max)	11'7" x 10'9" (max)
Bedroom 3	3.53m x 3.18m (max)	11'7" x 10'5" (max)
Bedroom 4	2.58m x 2.93m	8'6" x 9'7"
Bathroom	2.35m x 2.25m (max)	7'9" x 7'5" (max)



Ground Floor

Kitchen/Dining	4.39m x 6.54m (inc. bay)	14'5" x 21'5" (inc. bay)
Living Room	3.42m x 6.54m	11'3" x 21'5"
Utility	2.03m x 1.87m	6'8" x 6'2"
Cloakroom	1.00m x 1.65m	3'3" x 5'5"

Clks - Cloakroom W - Fitted Wardrobe WS - Wardrobe Space (suggestion only, wardrobe not included) B - Boiler

Furniture arrangements are for illustrative purposes only. Items are not included, nor to scale.
The items shown in this key may be subject to change, and positions could vary from those indicated on this floorplan. Please refer to Sales Advisor for details of your selected plot. Computer generated image shown overleaf. External finishes, landscaping and configuration may vary from plot to plot. Please refer to Sales Advisor for further details. All dimensions are approximate and should not be used for carpet sizes, appliance spaces or furniture. We operate a policy of continuous improvement and individual features such as kitchen and bathroom layouts, doors, windows, garages and elevational treatments may vary from time to time. Consequently these particulars should be treated as general guidance only and do not constitute a contract, part of a contract or a warranty. BO/CB/415/S00/D/01/K.



The Gilder

FOUR BEDROOM HOME



Bellway

The Gilder

Four bedroom home



Clks - Cloakroom W - Fitted Wardrobe WS - Wardrobe Space (suggestion only, wardrobe not included) B - Boiler

Furniture arrangements are for illustrative purposes only. Items are not included, nor to scale.

The items shown in this key may be subject to change, and positions could vary from those indicated on this floorplan. Please refer to Sales Advisor for details of your selected plot. Computer generated image shown overleaf. External finishes, landscaping and configuration may vary from plot to plot. Please refer to Sales Advisor for further details. All dimensions are approximate and should not be used for carpet sizes, appliance spaces or furniture. We operate a policy of continuous improvement and individual features such as kitchen and bathroom layouts, doors, windows, garages and elevational treatments may vary from time to time. Consequently these particulars should be treated as general guidance only and do not constitute a contract, part of a contract or a warranty. GI/CB/415/S00/S/01/A.



The Harper

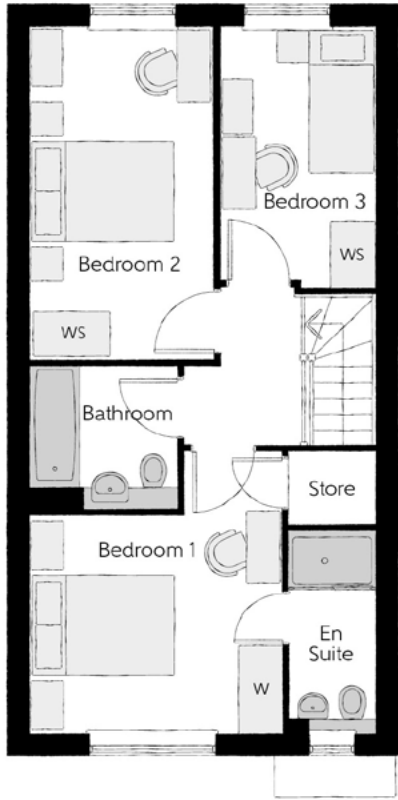
THREE BEDROOM HOME



Bellway

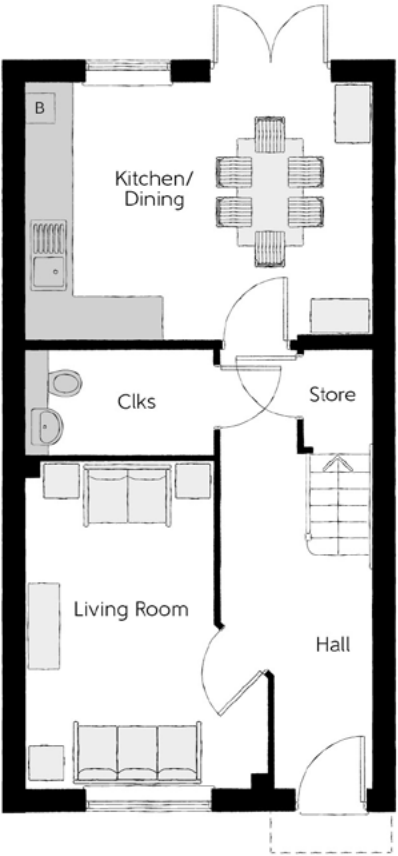
The Harper

Three bedroom home



First Floor

Bedroom 1	3.50m x 3.92m (max)	11'6" x 12'10" (max)
Bedroom 1 En Suite	1.20m x 2.82m	3'11" x 9'3"
Bedroom 2	2.55m x 4.62m	8'4" x 15'2"
Bedroom 3	2.15m x 3.61m	7'1" x 11'10"
Bathroom	2.06m x 1.99m	6'9" x 6'6"



Ground Floor

Kitchen/Dining	4.79m x 3.55m	15'9" x 11'8"
Living Room	3.36m x 4.55m (max)	11'0" x 14'11" (max)
Cloakroom	2.61m x 1.46m	8'7" x 4'10"

Clks - Cloakroom W - Fitted Wardrobe WS - Wardrobe Space (suggestion only, wardrobe not included) B - Boiler

Furniture arrangements are for illustrative purposes only. Items are not included, nor to scale.
The items shown in this key may be subject to change, and positions could vary from those indicated on this floorplan. Please refer to Sales Advisor for details of your selected plot. Computer generated image shown overleaf. External finishes, landscaping and configuration may vary from plot to plot. Please refer to Sales Advisor for further details. All dimensions are approximate and should not be used for carpet sizes, appliance spaces or furniture. We operate a policy of continuous improvement and individual features such as kitchen and bathroom layouts, doors, windows, garages and elevational treatments may vary from time to time. Consequently these particulars should be treated as general guidance only and do not constitute a contract, part of a contract or a warranty. HA/CB/415/S00/S/01/E.



The Hillard

Three bedroom home

The Hillard

THREE BEDROOM HOME



First Floor

Bedroom 1	4.37m x 3.81m (max) (max)	14'4" x 12'6" (max) (max)
Bedroom 1 En Suite	2.01m x 1.40m	6'4" x 4'7"
Bedroom 2	3.17m x 3.51m	10'5" x 11'6"
Bedroom 3	2.15m x 3.86m	7'1" x 12'8"
Bathroom	1.98m x 2.18m	6'6" x 7'2"



Ground Floor

Kitchen/Breakfast	2.60m x 5.30m (max)	8'6" x 17'5" (max)
Living/Dining Room	5.41m x 3.45m	17'9" x 11'4"
Cloakroom	1.46m x 1.95m	4'10" x 6'5"

Clks - Cloakroom W - Fitted Wardrobe WS - Wardrobe Space (suggestion only, wardrobe not included) B - Boiler

Furniture arrangements are for illustrative purposes only. Items are not included, nor to scale.

The items shown in this key may be subject to change, and positions could vary from those indicated on this floorplan. Please refer to Sales Advisor for details of your selected plot. Computer generated image shown overleaf. External finishes, landscaping and configuration may vary from plot to plot. Please refer to Sales Advisor for further details. All dimensions are approximate and should not be used for carpet sizes, appliance spaces or furniture. We operate a policy of continuous improvement and individual features such as kitchen and bathroom layouts, doors, windows, garages and elevational treatments may vary from time to time. Consequently these particulars should be treated as general guidance only and do not constitute a contract, part of a contract or a warranty. HI/CB/415/S00/D/01a/A.

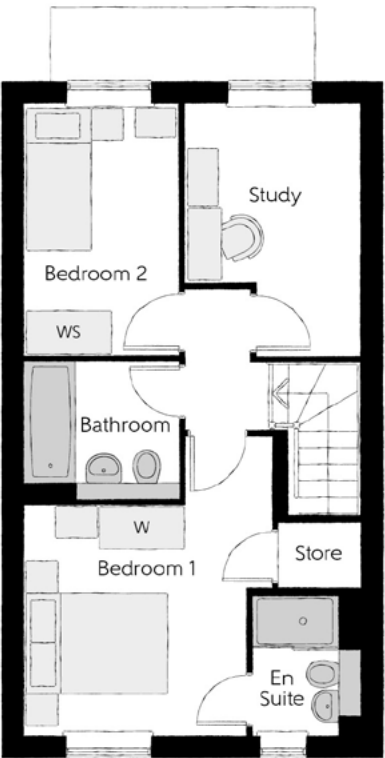


The Mariner

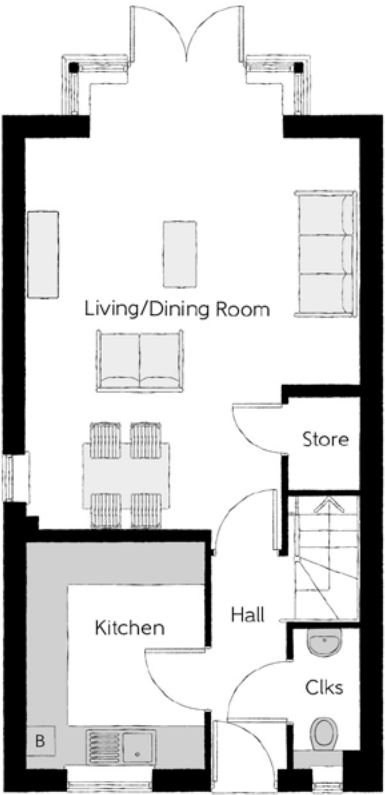
TWO BEDROOM HOME



Bellway



First Floor		
Bedroom 1	3.46m x 4.16m (max) (max)	11'4" x 13'8" (max) (max)
Bedroom 1 En Suite	1.48m x 1.96m	4'10" x 6'5"
Bedroom 2	2.15m x 3.49m	7'1" x 11'5"
Bedroom 3	2.43m x 3.51m (max) (max)	8'0" x 11'6" (max) (max)
Bathroom	2.15m x 1.92m	7'1" x 6'3"



Ground Floor		
Kitchen	2.50m x 3.17m	8'3" x 10'5"
Living/Dining	4.67m x 6.25m (max)	15'4" x 20'6" (max)
Cloakroom	0.94m x 1.96m	3'1" x 6'5"

Clks - Cloakroom W - Fitted Wardrobe WS - Wardrobe Space (suggestion only, wardrobe not included) B - Boiler

Furniture arrangements are for illustrative purposes only. Items are not included, nor to scale.
The items shown in this key may be subject to change, and positions could vary from those indicated on this floorplan. Please refer to Sales Advisor for details of your selected plot. Computer generated image shown overleaf. External finishes, landscaping and configuration may vary from plot to plot. Please refer to Sales Advisor for further details. All dimensions are approximate and should not be used for carpet sizes, appliance spaces or furniture. We operate a policy of continuous improvement and individual features such as kitchen and bathroom layouts, doors, windows, garages and elevational treatments may vary from time to time. Consequently these particulars should be treated as general guidance only and do not constitute a contract, part of a contract or a warranty.

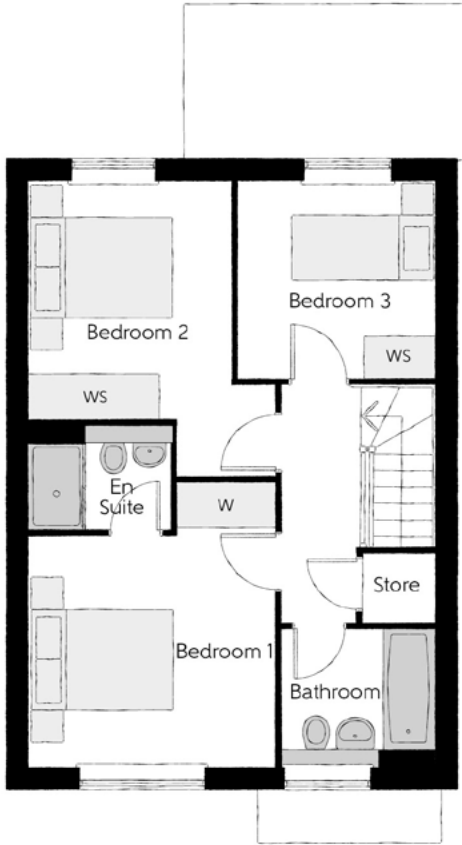


The Mason

Three bedroom home

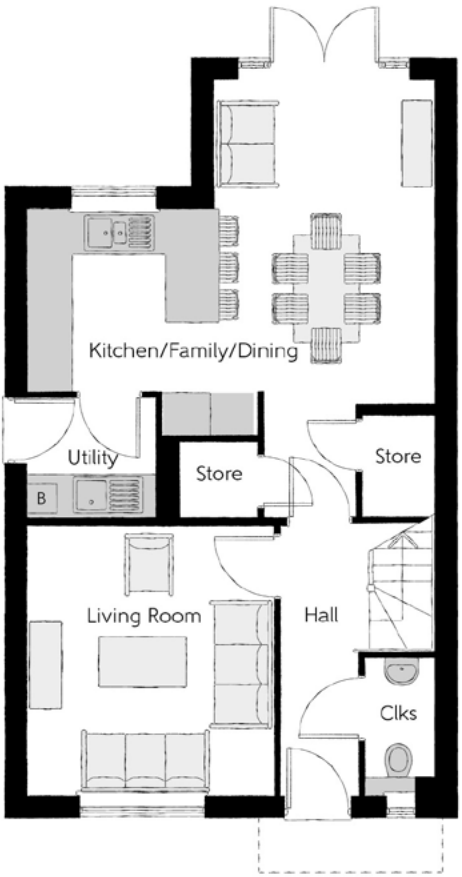
The Mason

THREE BEDROOM HOME



First Floor

Bedroom 1	3.44m x 3.93m <small>(max)</small>	11'3" x 12'11" <small>(max)</small>
Bedroom 1 En Suite	1.98m x 1.46m	6'6" x 4'9"
Bedroom 2	3.44m x 4.09m <small>(max)</small>	11'3" x 13'5" <small>(max)</small>
Bedroom 3	2.74m x 2.74m <small>(max)</small>	9'0" x 9'0" <small>(max)</small>
Bathroom	2.11m x 1.91m	6'11" x 6'3"



Ground Floor

Kitchen/Family/Dining	5.64m x 6.05m <small>(max)</small> <small>(max)</small>	18'6" x 19'10" <small>(max)</small> <small>(max)</small>
Living Room	3.42m x 3.71m	11'3" x 12'2"
Utility	1.78m x 1.66m	5'10" x 5'5"
Cloakroom	0.96m x 1.91m	3'2" x 6'3"

Clks - Cloakroom W - Fitted Wardrobe WS - Wardrobe Space (suggestion only, wardrobe not included) B - Boiler

Furniture arrangements are for illustrative purposes only. Items are not included, nor to scale.

The items shown in this key may be subject to change, and positions could vary from those indicated on this floorplan. Please refer to Sales Advisor for details of your selected plot. Computer generated image shown overleaf. External finishes, landscaping and configuration may vary from plot to plot. Please refer to Sales Advisor for further details. All dimensions are approximate and should not be used for carpet sizes, appliance spaces or furniture. We operate a policy of continuous improvement and individual features such as kitchen and bathroom layouts, doors, windows, garages and elevational treatments may vary from time to time. Consequently these particulars should be treated as general guidance only and do not constitute a contract, part of a contract or a warranty. MA/CB/415/S00/D/01/Q.

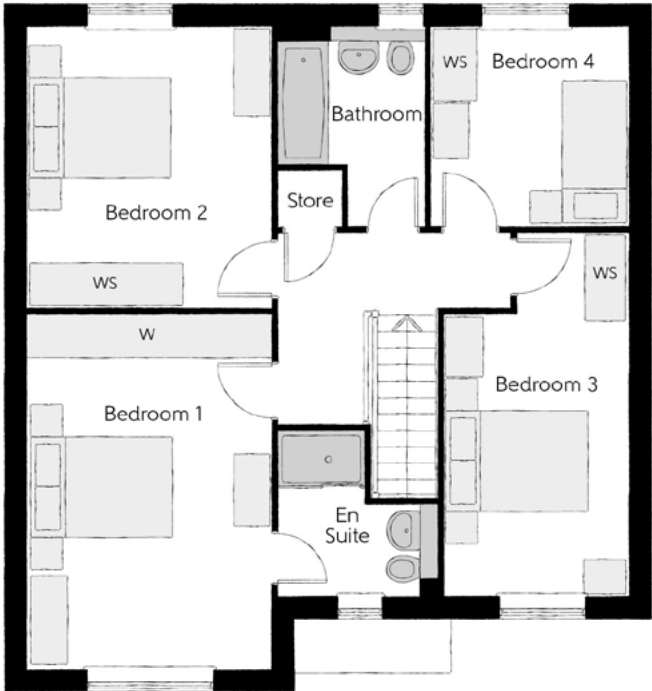


The Philosopher

FOUR BEDROOM HOME

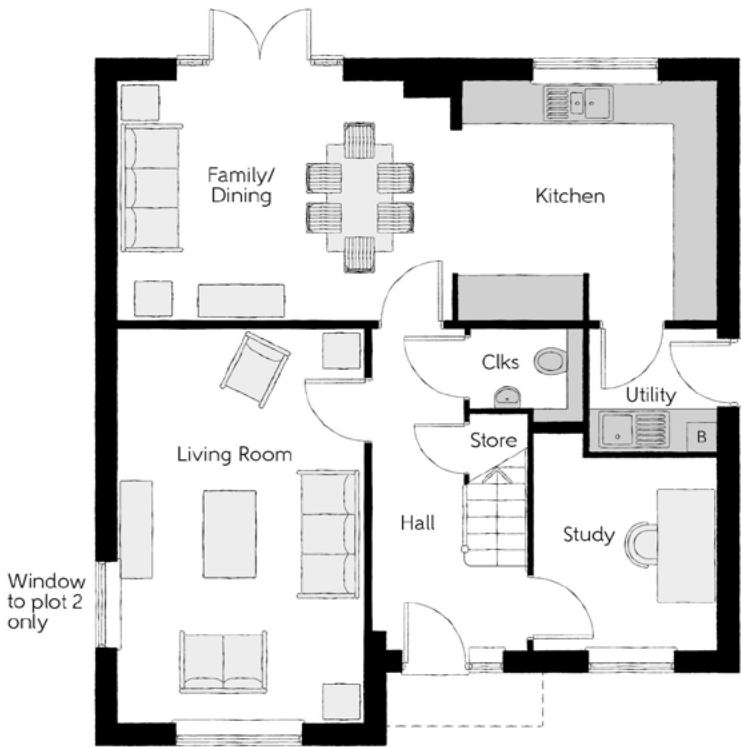


Bellway



First Floor

Bedroom 1	3.39m x 4.92m	11'1" x 16'2"
Bedroom 1 En Suite	2.23m x 2.27m (max) (max)	7'4" x 7'5" (max) (max)
Bedroom 2	3.39m x 3.89m	11'1" x 12'9"
Bedroom 3	2.55m x 5.03m (max)	8'4" x 16'6" (max)
Bedroom 4	2.75m x 2.76m	9'0" x 9'1"
Bathroom	2.02m x 2.76m (max) (max)	6'8" x 9'1" (max) (max)



Ground Floor

Kitchen	3.56m x 3.30m	12'2" x 10'10"
Family/Dining	4.63m x 3.30m	15'2" x 10'10"
Living Room	3.39m x 5.45m	11'1" x 17'11"
Study	2.55m x 3.03m (max)	8'4" x 9'11" (max)
Utility	1.78m x 1.71m	5'10" x 5'7"
Cloakroom	1.57m x 1.32m (max)	5'2" x 4'4" (max)

Clks - Cloakroom W - Fitted Wardrobe WS - Wardrobe Space (suggestion only, wardrobe not included) B - Boiler

Furniture arrangements are for illustrative purposes only. Items are not included, nor to scale.

The items shown in this key may be subject to change, and positions could vary from those indicated on this floorplan. Please refer to Sales Advisor for details of your selected plot. Computer generated image shown overleaf. External finishes, landscaping and configuration may vary from plot to plot. Please refer to Sales Advisor for further details. All dimensions are approximate and should not be used for carpet sizes, appliance spaces or furniture. We operate a policy of continuous improvement and individual features such as kitchen and bathroom layouts, doors, windows, garages and elevational treatments may vary from time to time. Consequently these particulars should be treated as general guidance only and do not constitute a contract, part of a contract or a warranty. PH/CB/415/S00/D/02/H.

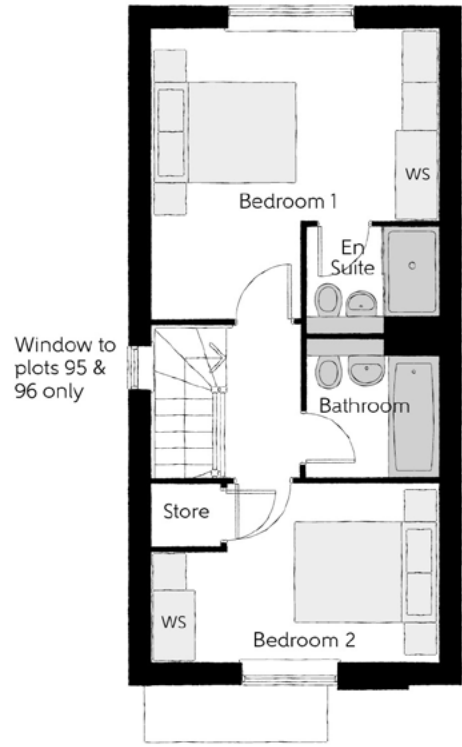


The Potter

Two bedroom home

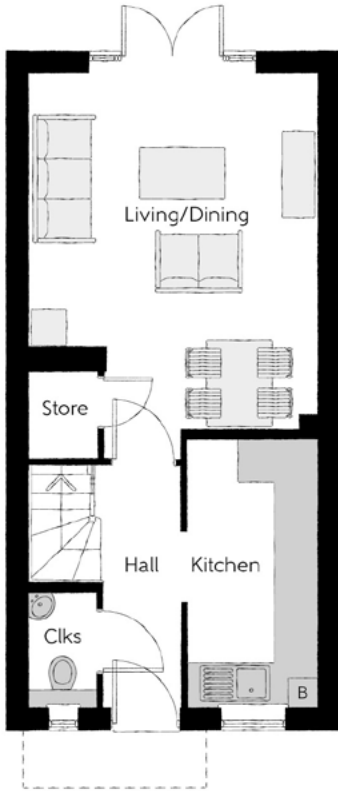
The Potter

TWO BEDROOM HOME



First Floor

Bedroom 1	3.99m x 4.04m (max)	13'1" x 13'3" (max)
Bedroom 1 En Suite	1.86m x 1.48m	6'1" x 4'10"
Bedroom 2	3.99m x 2.47m (max)	13'1" x 8'1" (max)
Bathroom	1.86m x 1.92m	6'1" x 6'3"



Ground Floor

Kitchen	1.80m x 3.72m	5'11" x 12'2"
Living/Dining	3.99m x 5.33m (max)	13'1" x 16'2" (max)
Cloakroom	0.94m x 1.60m	3'1" x 5'3"

Clks - Cloakroom W - Fitted Wardrobe WS - Wardrobe Space (suggestion only, wardrobe not included) B - Boiler

Furniture arrangements are for illustrative purposes only. Items are not included, nor to scale.
The items shown in this key may be subject to change, and positions could vary from those indicated on this floorplan. Please refer to Sales Advisor for details of your selected plot. Computer generated image shown overleaf. External finishes, landscaping and configuration may vary from plot to plot. Please refer to Sales Advisor for further details. All dimensions are approximate and should not be used for carpet sizes, appliance spaces or furniture. We operate a policy of continuous improvement and individual features such as kitchen and bathroom layouts, doors, windows, garages and elevational treatments may vary from time to time. Consequently these particulars should be treated as general guidance only and do not constitute a contract, part of a contract or a warranty. PO/CB/415/S00/S/01/K.

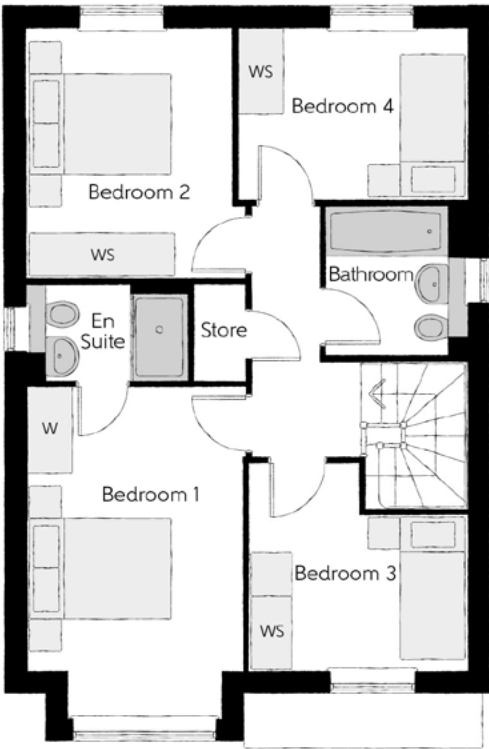


The Scrivener

FOUR BEDROOM HOME

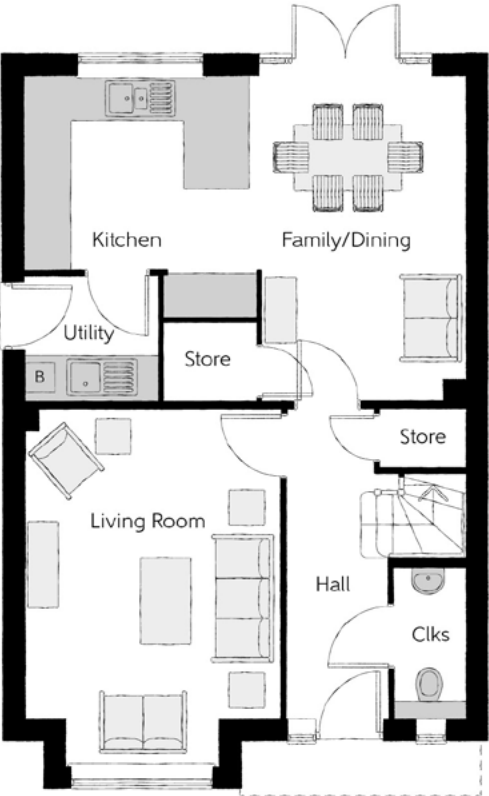


Bellway



First Floor

Bedroom 1	2.96m x 4.59m (inc. bay)	9'9" x 15'1" (inc. bay)
Bedroom 1 En Suite	2.22m x 1.35m	7'4" x 4'5"
Bedroom 2	2.83m x 3.46m	9'3" x 11'4"
Bedroom 3	3.03m x 2.87m (max)	9'11" x 9'5" (max)
Bedroom 4	3.17m x 2.38m	10'5" x 7'10"
Bathroom	1.91m x 2.08m	6'3" x 6'10"



Ground Floor

Kitchen	3.20m x 3.33m	10'6" x 10'11"
Family/Dining	2.79m x 4.48m	9'6" x 14'8"
Living Room	3.54m x 4.94m (inc. bay)	11'7" x 16'3" (inc. bay)
Utility	1.84m x 1.71m	6'0" x 5'7"
Cloakroom	0.97m x 2.08m	3'2" x 6'10"

Clks - Cloakroom W - Fitted Wardrobe WS - Wardrobe Space (suggestion only, wardrobe not included) B - Boiler

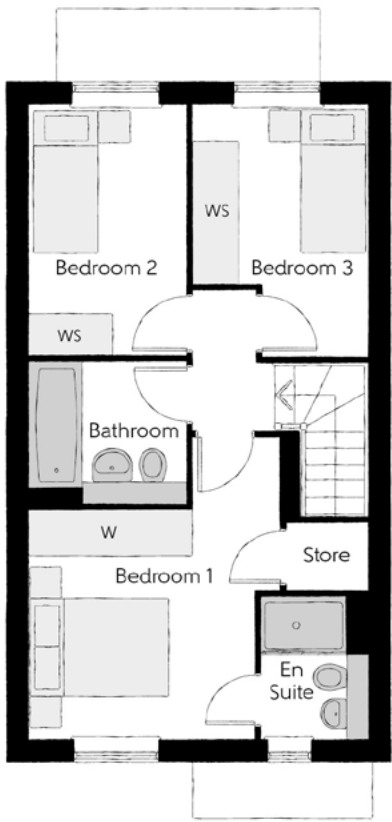
Furniture arrangements are for illustrative purposes only. Items are not included, nor to scale.

The items shown in this key may be subject to change, and positions could vary from those indicated on this floorplan. Please refer to Sales Advisor for details of your selected plot. Computer generated image shown overleaf. External finishes, landscaping and configuration may vary from plot to plot. Please refer to Sales Advisor for further details. All dimensions are approximate and should not be used for carpet sizes, appliance spaces or furniture. We operate a policy of continuous improvement and individual features such as kitchen and bathroom layouts, doors, windows, garages and elevational treatments may vary from time to time. Consequently these particulars should be treated as general guidance only and do not constitute a contract, part of a contract or a warranty. SC/CB/415/S00/D/01/N.



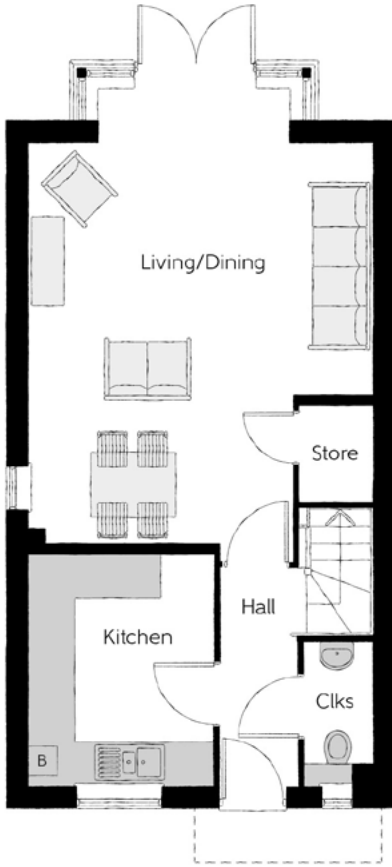
The Turner

Three bedroom home



First Floor

Bedroom 1	3.46m x 4.16m (max) (max)	11'4" x 13'8" (max) (max)
Bedroom 1 En Suite	1.48m x 1.96m	4'10" x 6'5"
Bedroom 2	2.15m x 3.49m	7'1" x 11'5"
Bedroom 3	2.43m x 3.51m (max) (max)	8'0" x 11'6" (max) (max)
Bathroom	2.15m x 1.92m	7'1" x 6'3"



Ground Floor

Kitchen	2.50m x 3.17m	8'3" x 10'5"
Living/Dining	4.67m x 6.25m (max)	15'4" x 20'6" (max)
Cloakroom	0.94m x 1.96m	3'1" x 6'5"

Clks - Cloakroom W - Fitted Wardrobe WS - Wardrobe Space (suggestion only, wardrobe not included) B - Boiler

Furniture arrangements are for illustrative purposes only. Items are not included, nor to scale.
The items shown in this key may be subject to change, and positions could vary from those indicated on this floorplan. Please refer to Sales Advisor for details of your selected plot. Computer generated image shown overleaf. External finishes, landscaping and configuration may vary from plot to plot. Please refer to Sales Advisor for further details. All dimensions are approximate and should not be used for carpet sizes, appliance spaces or furniture. We operate a policy of continuous improvement and individual features such as kitchen and bathroom layouts, doors, windows, garages and elevational treatments may vary from time to time. Consequently these particulars should be treated as general guidance only and do not constitute a contract, part of a contract or a warranty. TU/CB/415/S00/S/01/N.

The Turner
THREE BEDROOM HOME



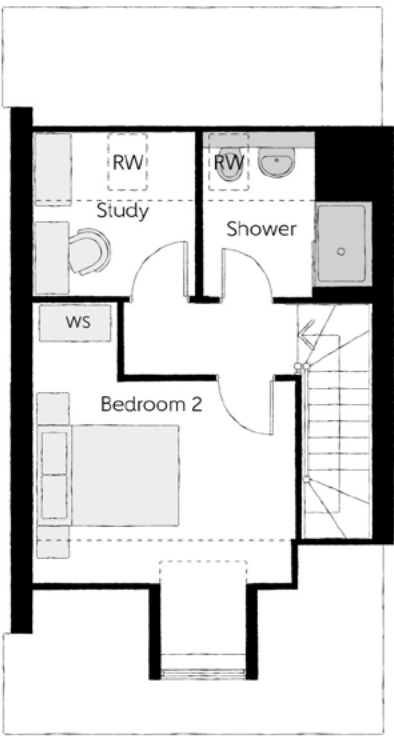


The Wainwright

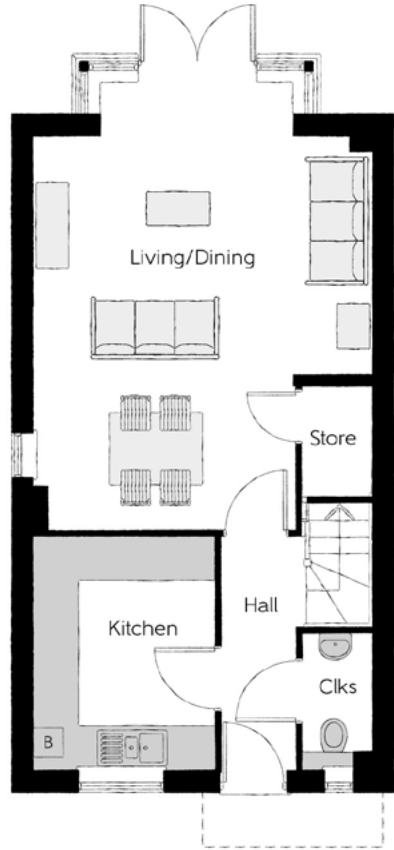
Four bedroom home

The Wainwright

THREE BEDROOM HOME



Second Floor		
Bedroom 2	3.63m x 3.90m (max) (max)	11'11" x 12'6" (max) (max)
Study	2.25m x 2.29m	7'5" x 11'1"
Shower	2.33m x 2.29m	7'8" x 7'6"



Ground Floor		
Kitchen	2.50m x 3.17m	8'3" x 10'5"
Living/Dining	4.67m x 6.25m (max) (max)	15'4" x 20'6" (max) (max)
Cloakroom	0.94m x 1.90m	3'1" x 6'3"



First Floor		
Bedroom 1	4.67m x 3.37m (max) (max)	15'4" x 11'1" (max) (max)
Bedroom 1 En Suite	1.40m x 2.15m	4'7" x 7'1"
Bedroom 3	2.38m x 3.46m	7'10" x 11'4"
Bathroom	2.20m x 1.90m	7'3" x 6'3"

Clks - Cloakroom W - Fitted Wardrobe WS - Wardrobe Space (suggestion only, wardrobe not included) RW - Roof Window ---- - Reduced Head Height B - Boiler

Furniture arrangements are for illustrative purposes only. Items are not included, nor to scale.
The items shown in this key may be subject to change, and positions could vary from those indicated on this floorplan. Please refer to Sales Advisor for details of your selected plot. Computer generated image shown overleaf. External finishes, landscaping and configuration may vary from plot to plot. Please refer to Sales Advisor for further details. All dimensions are approximate and should not be used for carpet sizes, appliance spaces or furniture. We operate a policy of continuous improvement and individual features such as kitchen and bathroom layouts, doors, windows, garages and elevational treatments may vary from time to time. Consequently these particulars should be treated as general guidance only and do not constitute a contract, part of a contract or a warranty. WW/CB/415/S00/S/01/D.

Houses Specification

			2 Bedroom Homes	3 Bedroom Homes	4 Bedroom Homes
FINISHES	Entrance Doors	GRP Insulated Door	●	●	●
	Loft Hatch	Loft Hatch - Hinged Drop Down ** ††	●	●	●
	Ceilings	Crown White Matt Emulsion	●	●	●
	Walls	Crown White Matt Emulsion	●	●	●
	Floors	Concrete Ground Floor / Chipboard First Floor	●	●	●
	Window Cills	White Satin MDF	●	●	●
	Stairs	Timber Stair - White Satin MDF Strings	●	●	●
	Balusters	White Satin Stop Chamfered Balusters	●	●	●
	Newel Posts	White Satin Stop Chamfered Newels	●	●	●
	Newel Caps	White Satin Flat Top Newel Caps	●	●	●
	Handrail	White Satin Heavy Duty Handrail	●	●	●
	Skirting	White Satin 94x14 MDF Grooved & Chamfered	●	●	
		White Satin 120x14 MDF Grooved & Chamfered			●
	Architrave	White Satin 69x18 MDF Grooved & Chamfered	●	●	●
	Internal Doors	White Pre Finished Vertical Panel Internal Doors	●	●	●
	Ironmongery	Chrome SR100 Door Furniture	●	●	●
KITCHEN	Wardrobes	Sliding Fitted Wardrobes to Bed 1		●	●
	Carcass	Premium Grade 18mm thk Colour Matched Carcass	●	●	●
	Frontals	Bellway Band B options ###	●		
		Bellway Band C options ###		●	●
	Units	Frontal Matching Table Ends	●	●	
		Unit Framing			●
	Worktops	40mm Square Edge Worktops with upstand	●	●	●
	Kitchen Sink	Leisure Eaton Single Bowl SS Sink & Aquamono Tap (inc Sink Liner)	●		
		Leisure Eaton Bowl & Half SS Sink & Aquamono Tap (inc Sink Liner)		●	
		Leisure Albion Bowl & Half SS Sink & Aquamono Tap (inc Sink Liner)			●
	Utility Sink	Leisure Eaton Single Bowl SS Sink & Aquamono Tap (inc Sink Liner)		●	
		Leisure Albion Single Bowl SS Sink & Aquamono Tap (inc Sink Liner)			●
	Appliances Oven	Zanussi Single Oven ZOHHE2X2	●	●	
		Zanussi Single Oven ZOHNX3X1			●
	Appliances Hob	Zanussi 4 Burner Gas Hob ZGNN640X & SS Splashback	●	●	
		Zanussi 4 Burner Gas Hob ZGNN642X & SS Splashback			●
WET ROOMS	Appliances Extractor	Cooker Hood Extractor LFC316X	●		●
	Appliances Microwave	Zanussi Combination Microwave ZVENM6X1			●
	Appliances Fridge Freezer	Zanussi 70/30 Fridge Freezer ZBB28441SV	●	●	
		Zanussi 70/30 Fridge Freezer ZNLN18FS1			●
	Appliance Dishwasher	Zanussi Dishwasher ZDLN1511	●		●
		Zanussi Dishwasher ZDT21006FA		●	
	Appliance Washing Machine	Zanussi Washing Machine ZWF725B4PW	●	●	●
	Cloaks - WC	Roca DEBBA WC with Concealed Cistern & PL2 Flush Plate ^	●	●	●
	Cloaks - Basin	Roca Wash Hand Basin ‡‡	●	●	●
	Cloaks - Brassware	Bristan PISA Small Basin Chrome Mixer Tap	●	●	●
	Cloaks - Tiling	Band 2 Tiling to WC Boxing, Splashback Tiling to WHB, Flat Edge White Trim	●		
		Band 3 Tiling to WC Boxing, Splashback Tiling to WHB, Flat Edge White Trim		●	
		Band 3 Tiling to WC Boxing, Splashback Tiling to WHB, Flat Edge Chrome Trim			●
	Bathroom - WC	Roca DEBBA WC with Concealed Cistern & PL2 Flush Plate ^	●	●	●
	Bathroom - Basin	Roca DEBBA 500 WHB with Full Pedestal ##	●	●	
		Roca DEBBA 550 WHB with Semi Pedestal ##			●
	Bathroom - Bath	Roca OSLO Acrylic Bath & Rigid Bath Panel	●	●	●
	Bathroom - Brassware	Bristan PISA Chrome Bath & Basin Mixer Taps	●	●	
		Bristan SAIL Chrome Bath & Basin Mixer Taps			●
	Bathroom - Shower Tray	Mira FLIGHT Low Shower Tray with Mira ELEVATE Enclosure ‡‡	●	●	●
	Bathroom - Shower	Over Bath Mira RELATE EV Thermostatic Shower ‡‡‡	●	●	●
	Bathroom - Tiling	1/2 Height Tiling (Band 2) to Wet Walls with Flat Edged White Trim *** †††	●		
		1/2 Height Tiling (Band 3) to Wet Walls with Flat Edged Chrome Trim *** †††		●	●

			2 Bedroom Homes	3 Bedroom Homes	4 Bedroom Homes
WET ROOMS	En-Suite - WC	Roca DEBBA WC with Concealed Cistern & PL2 Flush Plate ^	●	●	●
	En-Suite - Basin	Roca DEBBA 450 WHB with Full Pedestal	●	●	
		Roca DEBBA 550 WHB with Semi Pedestal			●
	En-Suite - Brassware	Bristan PISA Chrome Bath & Basin Mixer Taps	●	●	
		Bristan SAIL Chrome Bath & Basin Mixer Taps			●
	En-Suite - Shower Tray	Mira FLIGHT Low Shower Tray with Mira ELEVATE Enclosure ‡‡	●	●	●
MECHANICAL	En-Suite - Shower	Mira MINIMAL Single Thermostatic Shower ‡	●	●	●
	En-Suite - Tiling	1/2 Height Tiling (Band 2) to Wet Walls with Flat Edged White Trim †††	●	●	
		1/2 Height Tiling (Band 3) to Wet Walls with Flat Edged Chrome Trim †††			●
ELECTRICS	Boiler	Ideal LOGIC Combination Boiler (Cb)	●	●	
		Ideal LOGIC Boiler & ThermaQ Evocyl HW Cylinder (HOb)			●
	Controls	Dual Zoned 3 way Heating Programmer & Room Thermostat Cb	●	●	
		Dual Zoned 3 way Heating Programmer & Room Thermostat HOb			●
	Radiators	Stelrad Compact Steel Panel Radiators with Grilles	●	●	●
	Towel Warmers	Flat Chrome to Bathroom	●	●	●
EXTERNALS & MISC	Ventilation	Window Trickle Ventilations with Mechanical Extract Fans (system 3) dMEV	●	●	●
	Home Working	Dedicated Power, USB & Data points	●	●	●
	Safety - Heat	Heat Detector DET ~~	●	●	●
	Safety - Fire	Optical Smoke Detectors LD2 D2 DET	●	●	●
	Safety - Carbon	Fireblitz FHCO-BH Carbon Monoxide Detector	●	●	●
	Consumer Unit	Wylex Consumer Unit	●	●	●
	Sockets & Switches	Electrium CASA White Fittings	●	●	●
	USB Locations	Kitchen, Living Room & Bedroom 1 ONLY	●	●	●
	Shaver / Toothbrush Point	Bathroom & Ensuite 1 Only	●	●	●
	Lighting	Pendant Fitting to Habitable Rooms	●	●	●
	Lighting - Kitchen	White Recessed Spot Lights	●	●	
		Polished Chrome Recessed Spot Lights			●
	Lighting - Bathroom & En-Suites	White Recessed Spot Lights	●	●	
		Polished Chrome Recessed Spot Lights			●
	Lighting - External	External Light Clifton Brushed Steel Up/Down (Front & Rear)	●	●	●
	Communications - TV	TV Point to Living Room, Family, Bedroom 1 & Study	●	●	●
	Communications - Voice	Telephone Point to Living Room	●	●	●
	Communications - Data	Cat 6 Network Point to Living Room, Family, Bedroon 1 & Study	●	●	●
	Communications - Satellite	Dual Connection Satellite Points to Living Room	●	●	●
	Broadband	Ultrafast Fibre Connectivity Openreach	●	●	●
EXTERNALS & MISC	Build Method	Masonry ^^^	●	●	●
	Ecological	Hedgehog Highway fencing adaption	●	●	●
	Garages Electricity	Light & Power Point to incurtilage Garages ^^^	●	●	●
	Maintenance	External Tap	●	●	●
	Number Plaque	Artisan Number Plaque	●	●	●
	Footpath & Patio	Buff PCC Flags 450x450x32's	●	●	●
	Garages	Steel Panel Up & Over Canopy Garage Door ^^^	●	●	●
	Drives	Bitmac Black ^^	●	●	●
	Landscaping - Front	Medalion Turf & Landscape Planting #	●	●	●
	Landscaping - Rear	Medalion Turf #	●	●	●
	EV Charging Terminal	Universal Socket 7kW * †	●	●	●

* refer site layout

** fire rated as necessary

*** full height around bath where shower provided as standard

† electrical infrastructure upgrade maybe required

†† where layout allows

††† full height to shower enclosure

‡ flow regulator fitted to bath mixer if serving single thermostatic shower & fed via combination boiler

‡‡ housetype dependent - liaison with sales executive

‡‡‡ inc MIRA bath screen 1.1863.004

^ inc soft close mechanism seat on 4 & 5 Bedroom Homes ONLY

^^ plot dependent

^^^ plot specific, refer site layout

refer site landscape layout

semi recessed basin if AD M4(ii) applicable

soft close mechanism to doors & drawers

~ where provision of shower tray allows

~~ where shown on layouts



Dedicated to delivering quality

An enhanced specification is the hallmark of The Artisan Collection.

All of our homes are equipped with superior fixtures and fittings, which dovetails perfectly with our focus on design and attention to detail.

Expertly crafted using state-of-the-art materials, your brand new home is finished to a high standard so you can start enjoying it the moment you get your keys.

"The overall finish of the home is perfect – Bellway really pay attention to every detail. The team were amazing and supported us throughout the process."

SAMI AND SARA,
HANWOOD PARK

Homes to love, built with care

From the first day you visit our sales centre, to the day you move in and beyond, we aim to provide a level of service and after-sales care that is second to none.

A number of quality checks are carried out on each of our new homes through the construction process and on completion. Once your home has passed all of our quality checks, you will be invited to attend your Home Demonstration which will provide an opportunity for you to understand the various elements of your new home. On move in day, our site and sales teams will be there to ensure that everything goes as smoothly as possible.

Once you've settled into your new home, Bellway has experienced after-sales teams to provide support and assistance whenever you need it. Our homes come with a 10-year NHBC Buildmark policy, or an equivalent warranty from another provider. This includes deposit protection from exchange of contracts, a two-year builder warranty from legal completion, and then eight years of structural defects insurance cover.*

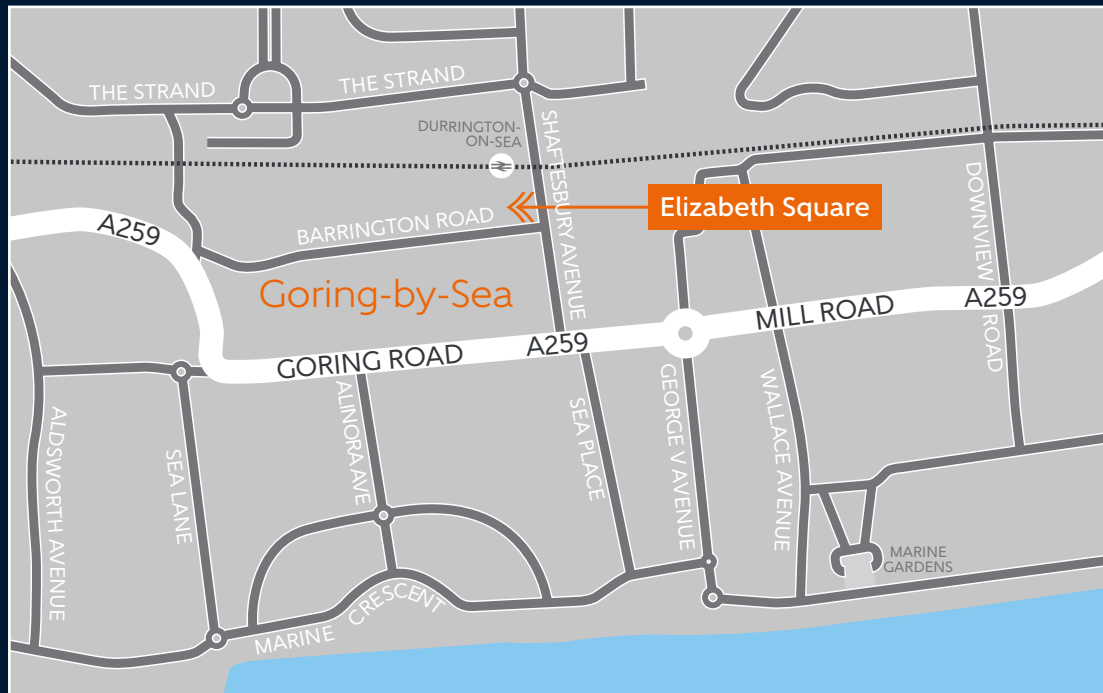
We are confident that our approach to building and selling quality homes, coupled with our customer care processes, will provide you with many years of enjoyment in your new home.



*For more details, visit the NHBC website at www.nhbc.co.uk/homeowners and view the 'Welcome to NHBC warranty and insurance' brochure, or refer to the brochure of your alternative warranty provider.



How to find us



Bellway abides by the New Homes Quality Code (NHQC), an independent industry code established to champion quality new homes and deliver better outcomes for customers.

Bellway

