

## Pilgrims' Way

---

WELCOME TO PILGRIMS' WAY, 2, 3 AND  
4 BEDROOM HOMES IN THE ATTRACTIVE  
LOCATION OF BEVERLEY.

**Ashberry**  
Homes



## Your future home

Designed for now and for generations to come

This stunning selection of 3, 4 and 5-bedroom homes is located in attractive surroundings on the outskirts of Beverley.

Each high-specification home has been designed and built using the most modern methods to achieve high levels of energy efficiency, with electric vehicle charging points adding to future sustainability. The result is an ideal base for families, first-time buyers and commuters looking for quality, comfort and convenience now and into the future.



“ We had a really good experience with Ashberry and we would definitely recommend them to a friend.

**Charlotte and Michael**  
Ashberry Homes at Pirton Fields

## A town of historic character and charm

A town where exceptional quality of life is simply a way of life

Beverley offers an attractive, balanced mix of small independent shops as well as the Browns of Beverley department store with modern shopping centre Flemingate for brands from Dunelm to H&M. You'll find a Tesco Superstore and M&S Simply Food, and bustling market days – the Saturday market hosts over 120 stalls and plays a big part of community life. There is always something new on the restaurant scene, like The Potting Shed to dine in colourful individual potting sheds or pan-Asian cuisine venues, adding new flavours to established favourites like the old coaching inns and cafés serving the famous Burgess ice-cream.

Families will find the Friary Nursery for early years, as well as Keldmarsh Primary and Beverley Grammar school, both rated Outstanding. There are first-class facilities at East Riding Leisure Beverley - 'more than a leisure centre, a community' – featuring swimming pool and Splash Zone with state-of-the-art water slides, and brand-new gym with Les Mills sessions, where all ages can enjoy health and wellbeing activities. Parkway Cinema is a vibrant hub for latest releases,

classic movies and National Theatre Live events. There are parent-and-baby sessions and weekend Little Penguin Kids' Club, Seniors' screenings and in-house Hayward Theatre for live comedy, music and musical theatre, while the East Riding Theatre hosts everything from Jazz sessions to Shakespeare productions.

Beverley's wonderful Westwood pastures make the perfect backdrop for Park Runs, great play at the Beverley and East Riding Golf Club, and the Beverley Racecourse. As well as racing there are popular Family Fun Days and new events like Westwoof Dog Day and carnival-inspired Coconut Cup Race Day. The 14-day Walking East Yorkshire Festival celebrates the wider landscape whether you're walker, cyclist, horse-rider, nature lover or history buff. Join the Active Coast programme's coastal walks, and youngsters will love being Coastal Explorer adventurer. With the coast 23 minutes' drive, sandy beaches underfoot, sea breezes and wealth of birdlife, you'll feel away from it all, yet with Beverley's train services and excellent road network you are always well-connected.









# Development Plan



## 2 Bedroom Homes



The Amaryllis  
Plot 149



The Sundew  
Plots 205, 206, 247, 248 & 252

## 3 Bedroom Homes



The Begonia  
Plots 152, 169, 193, 211, 249, 254 & 257



The Daisy  
Plots 204, 220, 241, 250, 251 & 262



The Orchid  
Plots 157, 158, 163, 164, 207, 208, 242, 243, 244, 245, 246, 255, 256, 258, 259, 260, 261 & 263

### Key to plan

- s/s Sub station
- p/s Pump station
- bcp Bin collection point
- g/g Gas governor

## 4 Bedroom Homes



The Angelica  
Plots 77, 155, 166, 167, 172, 174, 192, 212, 213, 214, 233 & 266



The Armeria  
Plots 78, 79, 80, 81, 194, 195, 196, 197, 200, 201, 202, 203, 229, 230, 231 & 232



The Aster  
Plots 156, 160, 162, 165, 215, 216, 217 & 265



The Myrtle  
Plots 153, 154, 198 & 199



The Ophelia  
Plots 159, 161, 168, 209, 210, 228 & 253



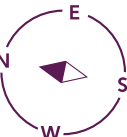
The Trillium  
Plots 150, 151, 170, 171, 173, 218, 219 & 264

## 1 - 4 Bedroom Homes



Affordable Homes

The site plan is drawn to show the relative position of individual properties. NOT TO SCALE. This is a two dimensional drawing and will not show land contours and gradients, boundary treatments, landscaping or local authority street lighting. Footpaths subject to change. For details of individual properties and availability please refer to our Sales Advisor.





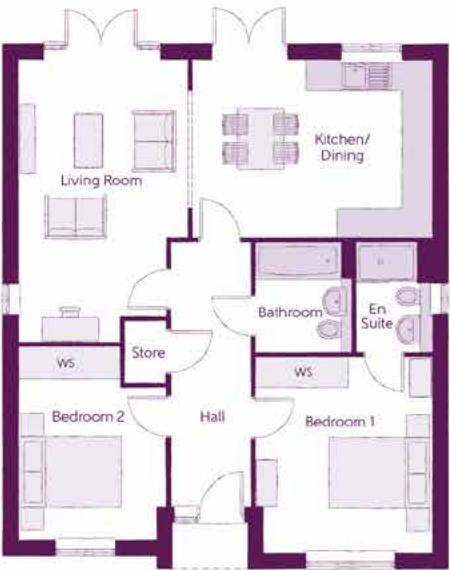
The Amaryllis

2 BEDROOM HOME



The Amaryllis

2 BEDROOM HOME



Ground Floor		
Kitchen/Dining	4.70m x 3.52m	15'5" x 11'7"
Living Room	3.41m x 5.57m (max)	11'2" x 18'3" (max)
Bedroom 1	3.47m x 3.84m	11'5" x 12'7"
Bedroom 1 En Suite	1.40m x 2.15 m	4'7" x 7'1"
Bedroom 2	2.89m x 3.80m (max)	9'6" x 12'6" (max)
Bathroom	1.99m x 2.15m	6'6" x 7'1"

Clks - Cloakroom    WS - Wardrobe Space (suggestion only, wardrobe not included)    W - Fitted Wardrobe

Furniture arrangements are for illustrative purposes only. Items are not included, nor to scale.

The items shown in this key may be subject to change, and positions could vary from those indicated on this floorplan. Please refer to Sales Advisor for details of your selected plot. Computer generated image shown overleaf. External finishes, landscaping and configuration may vary from plot to plot. Please refer to Sales Advisor for further details. All dimensions are approximate and should not be used for carpet sizes, appliance spaces or furniture. We operate a policy of continuous improvement and individual features such as kitchen and bathroom layouts, doors, windows, garages and elevational treatments may vary from time to time. Consequently these particulars should be treated as general guidance only and do not constitute a contract, part of a contract or a warranty. WO/CB/130/S00/D/01/D.





The Angelica

4 BEDROOM HOME



The Angelica

4 BEDROOM HOME



Ground Floor		
Kitchen/Dining	4.39m x 6.54m (inc. bay)	14'5" x 21'5" (inc. bay)
Living Room	3.42m x 6.54m	11'3" x 21'5"
Utility	2.03m x 1.87m	6'8" x 6'2"
Cloakroom	1.00m x 1.65m	3'3" x 5'5"



First Floor		
Bedroom 1	3.66m x 3.52m (max)	12'0" x 11'7" (max)
Bedroom 1 En Suite	1.44m x 2.25m	4'9" x 7'5"
Bedroom 2	3.53m x 3.27m (max)	11'7" x 10'9" (max)
Bedroom 3	3.53m x 3.18m (max)	11'7" x 10'5" (max)
Bedroom 4	2.58m x 2.93m	8'6" x 9'7"
Bathroom	2.35m x 2.25m (max)	7'9" x 7'5" (max)

Clks - Cloakroom    WS - Wardrobe Space (suggestion only, wardrobe not included)    W - Fitted Wardrobe

Furniture arrangements are for illustrative purposes only. Items are not included, nor to scale.

The items shown in this key may be subject to change, and positions could vary from those indicated on this floorplan. Please refer to Sales Advisor for details of your selected plot. Computer generated image shown overleaf. External finishes, landscaping and configuration may vary from plot to plot. Please refer to Sales Advisor for further details. All dimensions are approximate and should not be used for carpet sizes, appliance spaces or furniture. We operate a policy of continuous improvement and individual features such as kitchen and bathroom layouts, doors, windows, garages and elevational treatments may vary from time to time. Consequently these particulars should be treated as general guidance only and do not constitute a contract, part of a contract or a warranty. BO/CB/130/S00/D/01/K.





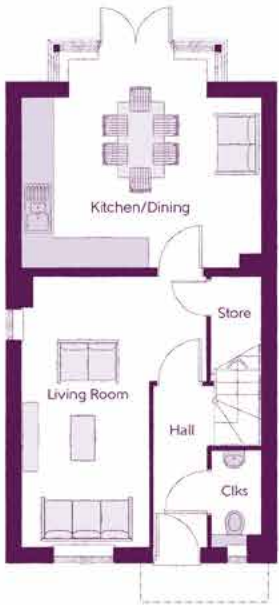
The Armeria

4 BEDROOM HOME



The Armeria

4 BEDROOM HOME



Ground Floor

Kitchen/Dining	4.67m x 4.10m (max)	15'4" x 13'5" (max)
Living Room	3.63m x 5.33m (max)	11'11" x 17'6" (max)
Cloakroom	0.95m x 1.90m	3'1" x 6'3"



First Floor

Bedroom 1	4.67m x 3.37m (max)	15'4" x 11'1" (max)
Bedroom 1 En Suite	1.39m x 2.15m	4'7" x 7'1"
Bedroom 3	2.38m x 3.46m	7'10" x 11'4"
Bathroom	2.20m x 1.91m	7'3" x 6'3"



Second Floor

Bedroom 2	3.63m x 3.81m (max)	11'11" x 12'6" (max)
Bedroom 4	2.25m x 3.38m (max)	7'5" x 11'1" (max)
Shower	2.33m x 2.29m	7'8" x 7'6"

Clks - Cloakroom    WS - Wardrobe Space (suggestion only, wardrobe not included)    W - Fitted Wardrobe

Furniture arrangements are for illustrative purposes only. Items are not included, nor to scale.

The items shown in this key may be subject to change, and positions could vary from those indicated on this floorplan. Please refer to Sales Advisor for details of your selected plot. Computer generated image shown overleaf. External finishes, landscaping and configuration may vary from plot to plot. Please refer to Sales Advisor for further details. All dimensions are approximate and should not be used for carpet sizes, appliance spaces or furniture. We operate a policy of continuous improvement and individual features such as kitchen and bathroom layouts, doors, windows, garages and elevational treatments may vary from time to time. Consequently these particulars should be treated as general guidance only and do not constitute a contract, part of a contract or a warranty. CW/CB/130/S00/S/01/E.





The Aster  
4 BEDROOM HOME



The Aster  
4 BEDROOM HOME



Ground Floor		
Kitchen/Dining/Family	8.56m x 3.22m (max)	28'1" x 10'7" (max)
Living Room	3.59m x 4.74m	11'9" x 15'7"
Dining Room	2.67m x 3.02m	8'9" x 9'11"
Utility	1.98m x 1.63m	6'6" x 5'4"
Cloakroom	0.90m x 2.06m	3'0" x 6'9"



First Floor		
Bedroom 1	3.65m x 4.26m (max)	12'0" x 14'0" (max)
Bedroom 1 En Suite	1.44m x 2.28m	4'9" x 7'6"
Bedroom 2	3.69m x 3.65m (max)	12'1" x 12'0" (max)
Bedroom 2 En Suite	2.60m x 1.53m (max)	8'6" x 5'0" (max)
Bedroom 3	2.66m x 4.38m	8'9" x 14'4"
Bedroom 4	3.65m x 2.71m	12'0" x 8'11"
Bathroom	2.08m x 2.71m (max)	6'10" x 8'11" (max)

Clks - Cloakroom    WS - Wardrobe Space (suggestion only, wardrobe not included)    W - Fitted Wardrobe

Furniture arrangements are for illustrative purposes only. Items are not included, nor to scale.

The items shown in this key may be subject to change, and positions could vary from those indicated on this floorplan. Please refer to Sales Advisor for details of your selected plot. Computer generated image shown overleaf. External finishes, landscaping and configuration may vary from plot to plot. Please refer to Sales Advisor for further details. All dimensions are approximate and should not be used for carpet sizes, appliance spaces or furniture. We operate a policy of continuous improvement and individual features such as kitchen and bathroom layouts, doors, windows, garages and elevational treatments may vary from time to time. Consequently these particulars should be treated as general guidance only and do not constitute a contract, part of a contract or a warranty. GO/CB/130/S00/D/01/H.





The Begonia

3 BEDROOM HOME

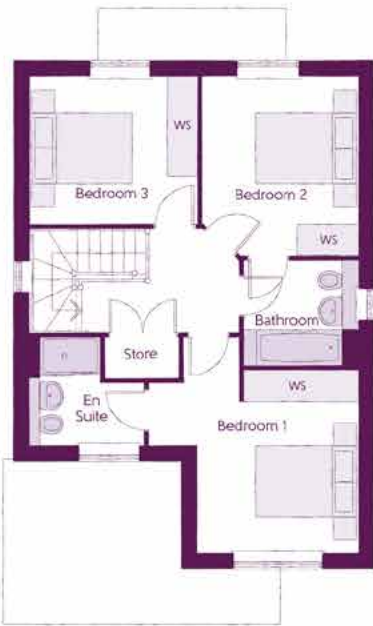


The Begonia

3 BEDROOM HOME



Ground Floor		
Kitchen/Dining/Family	6.42m x 3.51m (max)	21'1" x 11'6" (max)
Living Room	3.16m x 4.45m	10'4" x 14'7"
Cloakroom	2.05m x 1.15m	6'9" x 3'9"
Garage	3.10m x 6.09m (max)	10'2" x 20'0" (max)



First Floor		
Bedroom 1	4.09m x 4.23m (max)	13'5" x 13'11" (max)
Bedroom 1 En Suite	2.25m x 2.10m (max)	7'4" x 6'11" (max)
Bedroom 2	3.04m x 3.54m	10'0" x 11'7"
Bedroom 3	3.30m x 2.91m	10'10" x 9'7"
Bathroom	2.20m x 2.04m	7'3" x 6'8"

Clks - Cloakroom    WS - Wardrobe Space (suggestion only, wardrobe not included)    W - Fitted Wardrobe

Furniture arrangements are for illustrative purposes only. Items are not included, nor to scale.

The items shown in this key may be subject to change, and positions could vary from those indicated on this floorplan. Please refer to Sales Advisor for details of your selected plot. Computer generated image shown overleaf. External finishes, landscaping and configuration may vary from plot to plot. Please refer to Sales Advisor for further details. All dimensions are approximate and should not be used for carpet sizes, appliance spaces or furniture. We operate a policy of continuous improvement and individual features such as kitchen and bathroom layouts, doors, windows, garages and elevational treatments may vary from time to time. Consequently these particulars should be treated as general guidance only and do not constitute a contract, part of a contract or a warranty. SY/CB/130/S00/D/03/H.





The Daisy  
3 BEDROOM HOME



The Daisy  
3 BEDROOM HOME



Ground Floor

Kitchen/Dining	2.71m x 5.64m	8'11" x 18'6"
Living Room	3.01m x 5.64m	9'10" x 18'6"
Utility	1.98m x 1.32m	6'6" x 4'4"
Cloakroom	0.95m x 1.51m	3'1" x 4'11"



First Floor

Bedroom 1	2.77m x 4.07m	9'1" x 13'4"
Bedroom 1 En Suite	2.77m x 1.48m	9'1" x 4'10"
Bedroom 2	2.79m x 3.07m	9'2" x 10'1"
Bedroom 3	3.03 m x 2.48m	9'11" x 8'2"
Bathroom	2.26m x 1.92m	7'5" x 6'4"

Clks - Cloakroom    WS - Wardrobe Space (suggestion only, wardrobe not included)    W - Fitted Wardrobe

Furniture arrangements are for illustrative purposes only. Items are not included, nor to scale.

The items shown in this key may be subject to change, and positions could vary from those indicated on this floorplan. Please refer to Sales Advisor for details of your selected plot. Computer generated image shown overleaf. External finishes, landscaping and configuration may vary from plot to plot. Please refer to Sales Advisor for further details. All dimensions are approximate and should not be used for carpet sizes, appliance spaces or furniture. We operate a policy of continuous improvement and individual features such as kitchen and bathroom layouts, doors, windows, garages and elevational treatments may vary from time to time. Consequently these particulars should be treated as general guidance only and do not constitute a contract, part of a contract or a warranty. LY/CB/130/S00/D/01/C.





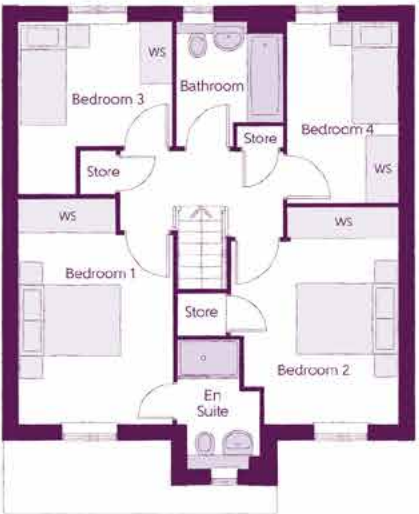
The Myrtle  
4 BEDROOM HOME



The Myrtle  
4 BEDROOM HOME



Ground Floor		
Kitchen/Dining	5.27m x 3.34m	17'4" x 10'11"
Living Room	3.27m x 4.40m <small>(max)</small>	10'9" x 14'5" <small>(max)</small>
Utility	2.07m x 1.76m	6'10" x 5'9"
Cloakroom	2.07m x 1.43m	6'10" x 4'8"
Garage	2.96m x 6.00m	9'9" x 19'8"



First Floor		
Bedroom 1	3.03m x 4.38m <small>(max)</small>	9'11" x 14'5" <small>(max)</small>
Bedroom 1 En Suite	1.61m x 2.51m	5'3" x 8'3"
Bedroom 2	3.27m x 4.23m <small>(max)</small>	10'9" x 13'11" <small>(max)</small>
Bedroom 3	3.01m x 3.41m <small>(max)</small>	9'11" x 11'2" <small>(max)</small>
Bedroom 4	2.16m x 3.56m	7'1" x 11'8"
Bathroom	2.08m x 2.46m <small>(max)</small>	6'10" x 8'1" <small>(max)</small>

Clks - Cloakroom    WS - Wardrobe Space (suggestion only, wardrobe not included)    W - Fitted Wardrobe

Furniture arrangements are for illustrative purposes only. Items are not included, nor to scale.

The items shown in this key may be subject to change, and positions could vary from those indicated on this floorplan. Please refer to Sales Advisor for details of your selected plot. Computer generated image shown overleaf. External finishes, landscaping and configuration may vary from plot to plot. Please refer to Sales Advisor for further details. All dimensions are approximate and should not be used for carpet sizes, appliance spaces or furniture. We operate a policy of continuous improvement and individual features such as kitchen and bathroom layouts, doors, windows, garages and elevational treatments may vary from time to time. Consequently these particulars should be treated as general guidance only and do not constitute a contract, part of a contract or a warranty. ME/CB/130/S00/D/01/B.





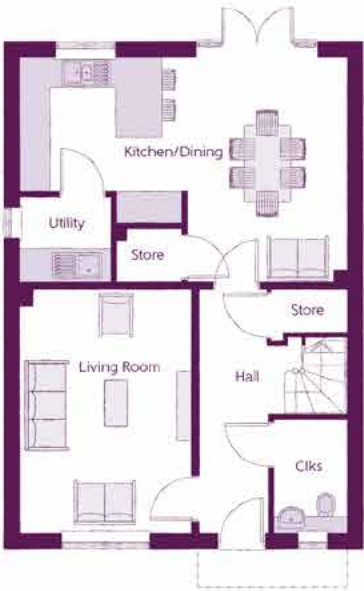
The Ophelia

4 BEDROOM HOME



The Ophelia

4 BEDROOM HOME



Ground Floor

Kitchen/Dining	6.42m x 4.42m (max)	21'1" x 14'6" (max)
Living Room	3.39m x 4.77m	11'1" x 15'8"
Utility	1.78m x 1.61m	5'10" x 5'3"
Cloakroom	1.46m x 2.22m	4'10" x 7'4"



First Floor

Bedroom 1	3.19m x 3.78m (max)	10'5" x 12'5" (max)
Bedroom 1 En Suite	1.56m x 2.05m	5'1" x 6'9"
Bedroom 2	2.73m x 3.35m	9'0" x 11'0"
Bedroom 2 En Suite	1.54m x 2.05m	5'1" x 6'9"
Bedroom 3	3.60m x 2.25m	11'10" x 7'4"
Bedroom 4	3.40m x 2.22m	11'2" x 7'4"
Bathroom	1.98m x 2.15m	6'6" x 7'1"

Clks - Cloakroom    WS - Wardrobe Space (suggestion only, wardrobe not included)    W - Fitted Wardrobe

Furniture arrangements are for illustrative purposes only. Items are not included, nor to scale.

The items shown in this key may be subject to change, and positions could vary from those indicated on this floorplan. Please refer to Sales Advisor for details of your selected plot. Computer generated image shown overleaf. External finishes, landscaping and configuration may vary from plot to plot. Please refer to Sales Advisor for further details. All dimensions are approximate and should not be used for carpet sizes, appliance spaces or furniture. We operate a policy of continuous improvement and individual features such as kitchen and bathroom layouts, doors, windows, garages and elevational treatments may vary from time to time. Consequently these particulars should be treated as general guidance only and do not constitute a contract, part of a contract or a warranty. RE/CB/130/S00/D/01/G.





The Orchid

3 BEDROOM HOME



The Orchid

3 BEDROOM HOME



Ground Floor

Kitchen/Dining	5.46m x 3.39m	17'11" x 11'2"
Living Room	3.22m x 5.36m (inc. bay)	10'7" x 17'7" (inc. bay)
Cloakroom	0.95m x 1.90m	3'1" x 6'3"



First Floor

Bedroom 1	3.40m x 3.02m	11'2" x 9'11"
Bedroom 1 En Suite	2.44m x 1.20m	8'0" x 3'11"
Bedroom 2	3.40m x 3.50m (max)	11'2" x 11'6" (max)
Bedroom 3	3.04m x 2.47m	10'0" x 8'1"
Bathroom	1.97m x 1.96m	6'5" x 6'5"

Clks - Cloakroom    WS - Wardrobe Space (suggestion only, wardrobe not included)    W - Fitted Wardrobe

Furniture arrangements are for illustrative purposes only. Items are not included, nor to scale.

The items shown in this key may be subject to change, and positions could vary from those indicated on this floorplan. Please refer to Sales Advisor for details of your selected plot. Computer generated image shown overleaf. External finishes, landscaping and configuration may vary from plot to plot. Please refer to Sales Advisor for further details. All dimensions are approximate and should not be used for carpet sizes, appliance spaces or furniture. We operate a policy of continuous improvement and individual features such as kitchen and bathroom layouts, doors, windows, garages and elevational treatments may vary from time to time. Consequently these particulars should be treated as general guidance only and do not constitute a contract, part of a contract or a warranty. CH/CB/5130/S00/S/01/M.





The Sundew

2 BEDROOM HOME



The Sundew

2 BEDROOM HOME



Ground Floor

Kitchen	1.80m x 3.72m	5'11" x 12'2"
Living/Dining	3.99m x 4.92m (max)	13'1" x 16'2" (max)
Cloakroom	0.94m x 1.60m	3'1" x 5'3"



First Floor

Bedroom 1	3.99m x 4.04m (max)	13'1" x 13'3" (max)
Bedroom 1 En Suite	1.86m x 1.48m	6'1" x 4'10"
Bedroom 2	3.99m x 2.47m (max)	13'1" x 8'1" (max)
Bathroom	1.86m x 1.92m	6'1" x 6'3"

Clks - Cloakroom    WS - Wardrobe Space (suggestion only, wardrobe not included)    W - Fitted Wardrobe

Furniture arrangements are for illustrative purposes only. Items are not included, nor to scale.

The items shown in this key may be subject to change, and positions could vary from those indicated on this floorplan. Please refer to Sales Advisor for details of your selected plot. Computer generated image shown overleaf. External finishes, landscaping and configuration may vary from plot to plot. Please refer to Sales Advisor for further details. All dimensions are approximate and should not be used for carpet sizes, appliance spaces or furniture. We operate a policy of continuous improvement and individual features such as kitchen and bathroom layouts, doors, windows, garages and elevational treatments may vary from time to time. Consequently these particulars should be treated as general guidance only and do not constitute a contract, part of a contract or a warranty. PO/CB/130/S00/S/01/K.





The Trillium

5 BEDROOM HOME



The Trillium

5 BEDROOM HOME



Ground Floor

Kitchen/Dining	5.16m x 3.28m (max)	16'11" x 10'9" (max)
Family	3.63m x 3.28m	11'11" x 10'9"
Living Room	3.50m x 4.38m	11'6" x 14'5"
Utility	1.91m x 2.04m	6'3" x 6'8"
Cloakroom	1.50m x 2.04m	4'11" x 6'8"
Garage	3.07m x 6.11m	10'1" x 20'1"



First Floor

Bedroom 1	4.52m x 5.46m (max)	14'10" x 17'11" (max)
Bedroom 1 En Suite	1.97m x 2.26m	6'6" x 7'5"
Bedroom 2	3.14m x 4.52m (max)	10'4" x 14'10" (max)
Bedroom 2 En Suite	1.99m x 1.41m	6'6" x 4'8"
Bedroom 3	3.33m x 4.02m (max)	10'11" x 13'2" (max)
Bedroom 4	3.12m x 3.46m (max)	10'3" x 11'4" (max)
Bathroom	2.15m x 2.16m	7'1" x 7'1"

Clks - Cloakroom    WS - Wardrobe Space (suggestion only, wardrobe not included)    W - Fitted Wardrobe

Furniture arrangements are for illustrative purposes only. Items are not included, nor to scale.

The items shown in this key may be subject to change, and positions could vary from those indicated on this floorplan. Please refer to Sales Advisor for details of your selected plot. Computer generated image shown overleaf. External finishes, landscaping and configuration may vary from plot to plot. Please refer to Sales Advisor for further details. All dimensions are approximate and should not be used for carpet sizes, appliance spaces or furniture. We operate a policy of continuous improvement and individual features such as kitchen and bathroom layouts, doors, windows, garages and elevational treatments may vary from time to time. Consequently these particulars should be treated as general guidance only and do not constitute a contract, part of a contract or a warranty. LO/CB/130/S00/D/01/G.



Specification

		2 Bedroom Homes	3 Bedroom Homes	4 Bedroom Homes
FINISHES	Entrance Doors	GRP Insulated Door		
	Loft Hatch	Loft Hatch - Hinged Drop Down ** ††		
	Ceilings	Crown White Matt Emulsion		
	Walls	Crown Smoked Glass Matt Emulsion		
	Floors	Concrete Ground Floor / Chipboard First Floor		
	Window Cills	White Gloss MDF		
	Stairs	Timber Stair - White Gloss MDF Stringers		
	Balusters	White Gloss Stop Chamfered Balusters		
	Newel Posts	White Gloss Stop Chamfered Newels		
	Newel Caps	White Gloss Pyramid Newel Caps		
		White Satin Pyramid Newel Caps		
	Handrail	White Gloss Heavy Duty Handrail		
	Skirting	White Gloss 94x14 MDF Grooved & Chamfered		
	Architrave	White Gloss 69x18 MDF Grooved & Chamfered		
	Internal Doors	White Pre Finished Ladder Internal Doors		
	Ironmongery	SAA Door Furniture		
KITCHEN	Frontals	Bellway Band B options &&		
		Bellway Band C options &&		
	Carcass	Premium Grade 18mm thk Carcass		
	Units	Frontal Matching Table Ends		
		Unit Framing		
	Worktops	40mm Square Edge Worktops with upstand		
	Kitchen Sink	Rangemaster Aria Single Bowl SS Sink & Aquapace Tap (inc Sink Liner)		
		Rangemaster Aria Bowl & Half SS Sink & Aquapace Tap (inc Sink Liner)		
		Rangemaster Clendale Bowl & Half SS Sink & Aquapace Tap (inc Sink Liner)		
		Rangemaster Aria Single Bowl SS Sink & Aquapace Tap (inc Sink Liner)		
		Rangemaster Clendale Single Bowl SS Sink & Aquapace Tap (inc Sink Liner)		
	Appliances Oven	Electrolux Single Oven KOFGH008X		
		Electrolux Single Oven KOFGH40TX		
	Appliances Hob	Electrolux 4 Burner Gas Hob KCS6404X & SS Splashback		
		Electrolux 4 Burner Gas Hob KCS6424X & SS Splashback		
WET ROOMS	Appliances Extractor	Cooker Hood Extractor LFC316X (recirculating)		
	Appliances Microwave	Electrolux Combination Microwave KVLFE46TX		
	Appliances Fridge Freezer	Fridge Freezer Space Only		
		Electrolux 70/30 Fridge Freezer LNS5LE18S		
	Appliance Dishwasher	Removeable Unit (inc Feed & Waste) ‡		
		Electrolux Dishwasher KEAF7200L		
	Appliance Washing Machine	Washing Machine Space Only (inc Feed & Waste)		
	Cloaks - WC	Roca DEBBA WC with Concealed Cistern & PL1 Flush Plate ^^^		
	Cloaks - Basin	Roca Wash Hand Basin ^		
	Cloaks - Brassware	Bristan PISA Small Basin Chrome Mixer Tap		
	Cloaks - Tiling	Band 2 Tiling to WC Boxing, Splashback Tiling to WHB, Flat Edge White Trim		
		Band 3 Tiling to WC Boxing, Splashback Tiling to WHB, Flat Edge Chrome Trim		
	Bathroom - WC	ROCA DEBBA WC with Concealed Cistern & PL2 Flush Plate ^^^		
		ROCA DEBBA WC with Concealed Cistern & PL1 Flush Plate ^^^		
	Bathroom - Basin	Roca DEBBA 500 WHB with Full Pedestal &		
		Roca DEBBA 550 WHB with Semi Pedestal &		

		2 Bedroom Homes	3 Bedroom Homes	4 Bedroom Homes
WET ROOMS	Bathroom - Tiling	1/2 Height Tiling (Band 2) to Wet Walls with Flat Edged White Trim *** †††		
		1/2 Height Tiling (Band 3) to Wet Walls with Flat Edged Chrome Trim *** †††		
	En-Suite - WC	ROCA DEBBA WC with Concealed Cistern & PL2 Flush Plate ^^^		
		Roca DEBBA WC with Concealed Cistern & PL2 Flush Plate #		
	En-Suite - Basin	Roca DEBBA 450 WHB with Full Pedestal		
		Roca DEBBA 550 WHB with Semi Pedestal		
	En-Suite - Brassware	Bristan PISA Chrome Bath & Basin Mixer Taps		
		Bristan SAIL Chrome Bath & Basin Mixer Taps		
MECHANICAL	En-Suite - Shower Tray	Mira FLIGHT Low Shower Tray with Mira ELEVATE Enclosure ^		
	En-Suite - Shower	Mira MINIMAL Single Thermostatic Shower †††		
	En-Suite - Tiling	1/2 Height Tiling (Band 2) to Wet Walls with Flat Edged White Trim †††		
		1/2 Height Tiling (Band 3) to Wet Walls with Flat Edged Chrome Trim †††		
	Waste Water Heat Recovery Boiler	Waste Water Heat Recovery System ^		
		Ideal LOGIC Combination Boiler (Cb) ^		
		Ideal LOGIC Boiler & ThermoQ Evocyl HW Cylinder (HOb) ^^		
	Controls	Honeywell T6R Dual Zone Smart Thermostat		
ELECTRICS	Radiators	Stelrad Compact Steel Panel Radiators with Grilles		
	Towel Warmers	Flat Chrome to Bathroom		
	Ventilation	Window Trickle Ventilators with Mechanical Extract Fans (system 3) dMEV		
	PV Generation Optimiser	Marlec Solar iBoost ^		
	Safety - Heat	Heat Detector DET ##		
	Safety - Fire	Optical Smoke Detectors LD2 D2 DET		
	Safety - Carbon	Fireblitz FHCO-BH Carbon Monoxide Detector		
	Consumer Unit	Wylex Consumer Unit		
EXTERNALS& MISC	Sockets & Switches	Electrium CASA White Fittings		
	Lighting	Pendant Fitting to Habitable Rooms		
	Lighting - Kitchen	Brushed Chrome Recessed Spot Lights		
	Lighting - Bathroom & En-Suites	Brushed Chrome Recessed Spot Lights		
	Lighting - External	External Light Clifton Brushed Steel Up/Down (Front & Rear)		
	Communications - TV	TV Point to Living Room & Bedroom 1		
	Communications - Data	Cat 6 Network Point to Living Room & Study		
	Broadband	Lightstream Full Fibre Broadband KCOM ‡‡		
EXTERNALS& MISC	Build Method	Masonry ~~~		
	Ecological	Hedgehog Highway fencing adaption		
	Garages Electrics	Light & Power Point to incurtilage Garages ~~~		
	Maintenance	External Tap		
	Number Plaque	Ashberry Number Plaque		
	Footpath & Patio	Grey PCC Flags 450x450x32's		
	Garages	Steel Panel Up & Over Canopy Garage Door ~~~		
	Drives	Block Paviments ~		
	Landscaping - Front	Medallion Turf & Landscape Planting ~~~~		
	Landscaping - Rear	Rotovated Topsoil ~~~~		
	Renewables	Photovoltaic Array ~~~		
	EV Charging Terminal	Universal Socket 7kW * †		

\* refer site layout

\*\* fire rated as necessary

\*\*\* full height around bath where shower provided as standard

† electrical infrastructure upgrade maybe required

†† where layout allows

††† full height to shower enclosure

‡ at build stage

‡‡ consult with sales executive for specific development details

‡‡‡ flow regulator fitted to bath mixer if serving single thermostatic shower & fed via combination boiler

^ housetype dependent - liaise with sales executive

^^ housetype dependent on particular 4 bed housetypes - liaise with Sales Advisor

^^^ inc soft close mechanism cost

# plot dependent

## plot specific, refer site layout

### refer site landscape layout

~ semi recessed basin if AD M4(ii) applicable

~~ soft close mechanism to doors & drawers

~~~ where provision of shower tray allows

& where shown on layouts





# It's the start of something new

Welcome to Ashberry Homes, a developer of homes built to exceptional standards in carefully chosen locations, where we place individuality and excellence at the heart of house-building.

At Ashberry Homes, we believe that in order to create homes that are loved, they must be built with expertise, confidence and the utmost care.

Our team of skilled craftsmen work to the highest of standards, making sure that your needs are always the inspiration behind our designs.

What's more, our Personal Touch selection of optional finishes and upgrades allows you to make your new home as unique as you are. This pride in our workmanship extends to the environment, with sustainable features built into every Ashberry home - helping to preserve precious natural resources and ensuring lower energy running costs for you.



“The staff at Ashberry Homes have been so helpful throughout my journey. Moving home can be a stressful time, and they really helped to keep me informed. They are exceptional.

**Jonathan**  
Cherry Fields



“I would recommend buying with Ashberry Homes, as they went above and beyond to ensure the quality of build and service beat our expectations.

**Matt and Katya**  
The Limes

From the moment you visit our sales centre to the second you step into your new Ashberry home, we will be there to offer our guidance and expertise.

Our friendly and professional team will help ensure that your home-buying journey is as straightforward as possible, supporting you through each decision you make. Plus, once you move in, we will still be there if you need us, providing a comprehensive programme of aftercare that you can rely on.

Ashberry Homes abides by The Consumer Code, which is an independent industry code developed to make the home-buying process fairer and more transparent for purchasers.







## Here for you at every step

At Ashberry Homes, we know that buying and selling a home is a time when you need support and guidance, which is why we're here to help.

We strive to give all our customers an enjoyable home-buying experience and help make your dream home a reality by being here for you every step of the way.

Our expert team will be by your side to advise and guide you from the moment you first visit us right through to the completion of your purchase. We'll also be available on moving day to welcome you into your new home, helping to ensure your move goes smoothly. We don't just stop when you have the keys either. Should you need us, our customer care team will be on hand to help with any queries, no matter how small.



## Love your home, not somebody else's

All of our homes are equipped with superior fixtures and fittings, which perfectly complements our focus on design and attention to detail.

Expertly crafted using state-of-the-art materials, your brand new home is finished to a high standard so you can start enjoying it the moment you get your keys.

“ We would recommend Ashberry Homes to others as they build a strong standard of homes. The aftercare was very good to make sure we had settled in.

**Amber and Darren**  
Elizabeth Gardens



## It's the little things that make a house your home

Our Personal Touch selection of optional finishes and fittings puts all the decisions in your hands.

From upgrading our standard fittings to adding additional items, you can make your new home as individual as you are.

Most importantly, we will ensure that your chosen features are expertly fitted and finished, ready for your move-in day.



“ We fell in love with our home the moment we saw it. It was our dream home, right down to the white picket fence outside our front garden.

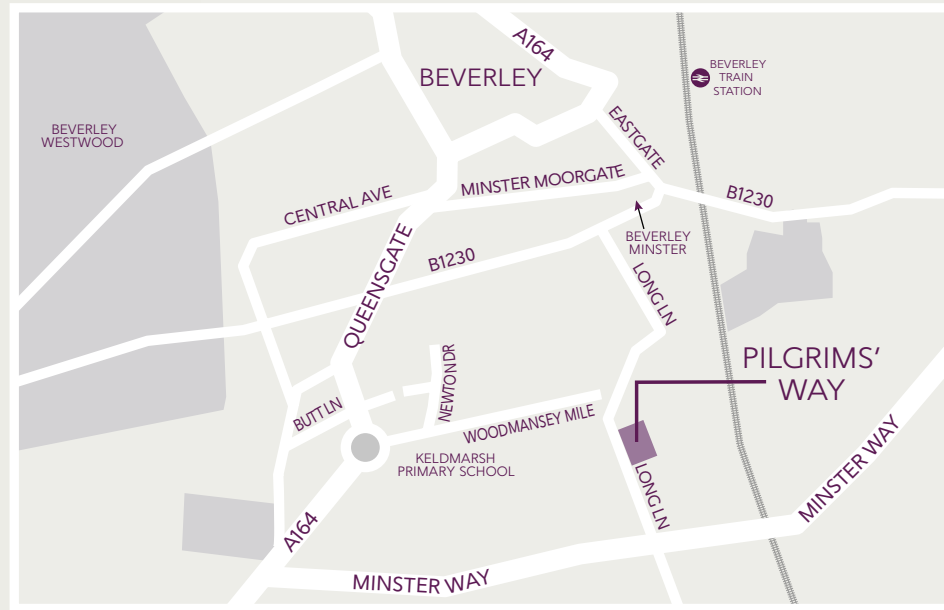
**Wyon and Tasnova**  
Victoria Gardens





# How to find us

---



Ashberry Homes abides by the New Homes Quality Code (NHQC), an independent industry code established to champion quality new homes and deliver better outcomes for customers.

Ashberry  
Homes

