



Roman Court

Roman Court is a development of 2, 3, and 4 bedroom homes in Lower Callerton.



Bellway



A Place to Thrive

One of the UK’s friendliest cities at your fingertips

Welcome to Roman Court, a new collection of homes nestled in the village of Walbottle, on the western outskirts of Newcastle. Offering 2, 3, 4, and 5-bedroom semi-detached and detached houses, this development appeals to a range of buyers looking to put down roots—whether commuters, families seeking

excellent schools, or first-time buyers taking their first step on the property ladder. These homes benefit from close proximity to Newcastle, a vibrant city offering diverse shopping, dining, world-class entertainment, rich arts and heritage, and a thriving sports culture.

Gateway to exploration

A town where tradition and modernity blend seamlessly

Nestled in a peaceful village setting, Roman Court offers the best of both worlds. While away from the city’s hustle and bustle, it remains well-connected with essential amenities just minutes away. Within a 10-minute drive are a medical centre, community hub, post office, banks, supermarkets, cafés, coffee shops, and bakeries. Several traditional pubs are within walking distance, including The Engine Inn and The Percy Arms, both less than an 8-minute walk from home.

For special dining occasions, Newcastle city centre—just under 10 miles away—boasts a fantastic range of restaurants. Choices span Indian, Italian, Spanish, American, and Mexican cuisines, with a vibrant Chinatown offering Japanese, Chinese, Thai, and Korean delights.

Newcastle is also a shopper’s paradise, home to high-street brands at Eldon Square Shopping Centre and Northumberland Street. Entertainment is in abundance, from modern cinemas showcasing the latest blockbusters to historic venues hosting live music and performing arts.

For active lifestyles, West Denton Leisure Centre is just a 7-minute drive away, offering a gym, swimming pool, sports hall, and sauna. Football fans will love being just a 15-minute drive from St James’ Park, home to Premier League club Newcastle United.

Families will find top-rated schools nearby, with St John Vianney Catholic and Knop Law primary schools within two miles, while Kenton School is just a 10-minute drive away.

Roman Court is well-connected by road and rail, benefiting both commuters and explorers. By car, Hexham is only 25 minutes away, Durham 35 minutes, and Darlington under an hour. Blaydon Station, just a 12-minute drive away, offers services to Sunderland in 37 minutes and Hartlepool in about an hour.

Roman Court offers a rare balance of village charm and city convenience—making it the perfect place o call home.






Development plan

2 Bedroom Homes

 **The Potter**
Plots 381, 382, 383, 384, 398, 399, 400 & 401

3 Bedroom Homes

 **The Chandler**
Plots 355, 356, 360, 361, 375, 376, 386, 387, 406, 407, 415, 416, 423, 424, 430, 431, 436, 437, 452 & 453


 **The Carver**
Plots 358, 359, 363, 364, 374, 405, 410, 411 & 442

 **The Sawyer**
Plots 353, 362, 366, 367, 377, 380, 389, 391, 394, 403, 404, 413, 417, 418, 421, 422, 429, 438, 439, 447, 454, 456 & 457

 **The Naylor**^{Life}
Plots 369, 370, 371, 372 & 373

 **The Thespian**
Plots 378, 425, 432, 441 & 451

4 Bedroom Homes

 **The Cutler**
Plots 379, 388, 408, 433, 440, 444, 445, 448, 450 & 455

 **The Reedmaker**^{Life}
Plots 395 & 426

 **The Pargeter**
Plots 390, 393, 414, 419, 435, 446 & 449

 **The Lorimer**^{Life}
Plots 392, 420 & 434

 **The Mercer**^{Life}
Plots 354, 357, 365, 368, 385, 396, 397, 402, 409, 412 & 443

Key to plan

v Visitor parking

s/s Sub station

The site plan is drawn to show the relative position of individual properties. NOT TO SCALE. This is a two dimensional drawing and will not show land contours and gradients, boundary treatments, landscaping or local authority street lighting. Footpaths subject to change. For details of individual properties and availability please refer to our Sales Advisor.





The Potter

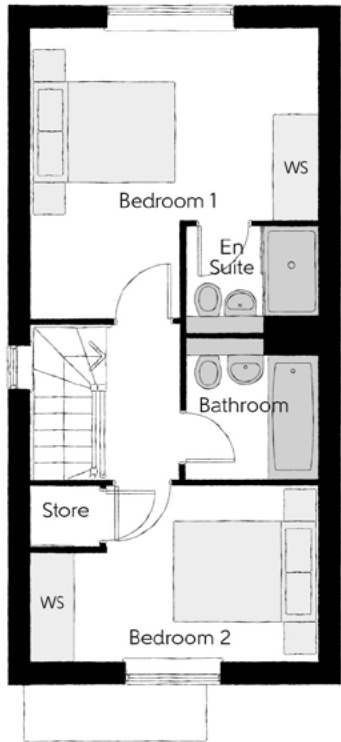
TWO BEDROOM HOME



Bellway

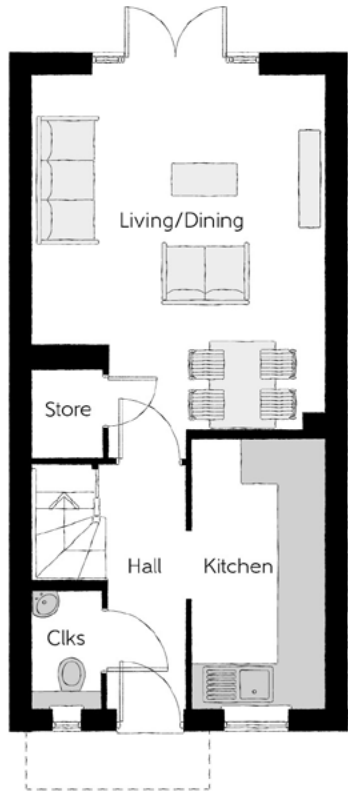
The Potter

Two bedroom home



First Floor

Bedroom 1	3.99m x 4.04m (max)	13'1" x 13'3" (max)
Bedroom 1 En Suite	1.86m x 1.48m	6'1" x 4'10"
Bedroom 2	3.99m x 2.47m (max)	13'1" x 8'1" (max)
Bathroom	1.86m x 1.92m	6'1" x 6'3"



Ground Floor

Kitchen	1.80m x 3.72m	5'11" x 12'2"
Living/Dining	3.99m x 4.92m (max)	13'1" x 16'2" (max)
Cloakroom	0.94m x 1.60m	3'1" x 5'3"

Clks - Cloakroom WS - Wardrobe Space (suggestion only, wardrobe not included)

Furniture arrangements are for illustrative purposes only. Items are not included, nor to scale.
The items shown in this key may be subject to change, and positions could vary from those indicated on this floorplan. Please refer to Sales Advisor for details of your selected plot. Computer generated image shown overleaf. External finishes, landscaping and configuration may vary from plot to plot. Please refer to Sales Advisor for further details. All dimensions are approximate and should not be used for carpet sizes, appliance spaces or furniture. We operate a policy of continuous improvement and individual features such as kitchen and bathroom layouts, doors, windows, garages and elevational treatments may vary from time to time. Consequently these particulars should be treated as general guidance only and do not constitute a contract, part of a contract or a warranty. PO/CB/500/S00/S/01/K.



The Chandler

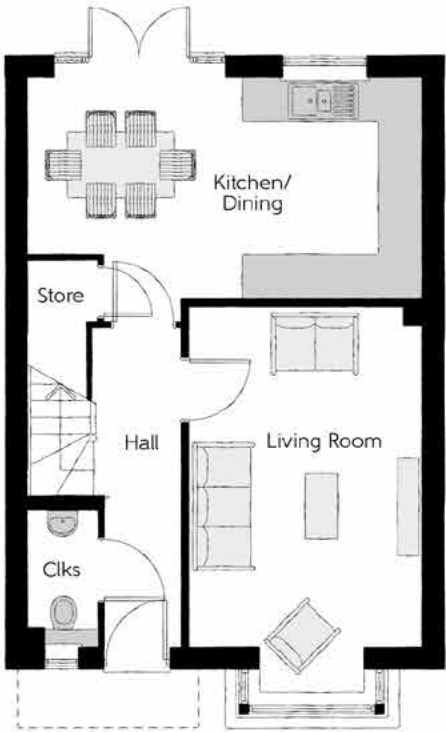
THREE BEDROOM HOME



Bellway



First Floor		
Bedroom 1	3.40m x 3.02m	11'2" x 9'11"
Bedroom 1 En Suite	2.44m x 1.20m	8'0" x 3'11"
Bedroom 2	3.40m x 3.50m (max)	11'2" x 11'6" (max)
Bedroom 3	3.04m x 2.47m	10'0" x 8'1"
Bathroom	1.97m x 1.96m	6'5" x 6'5"



Ground Floor		
Kitchen/Dining	5.46m x 3.39m	17'11" x 11'2"
Living Room	3.22m x 5.36m (inc. bay)	10'7" x 17'7" (inc. bay)
Cloakroom	0.95m x 1.90m	3'1" x 6'3"

Clks - Cloakroom WS - Wardrobe Space (suggestion only, wardrobe not included)

Furniture arrangements are for illustrative purposes only. Items are not included, nor to scale.

The items shown in this key may be subject to change, and positions could vary from those indicated on this floorplan. Please refer to Sales Advisor for details of your selected plot. Computer generated image shown overleaf. External finishes, landscaping and configuration may vary from plot to plot. Please refer to Sales Advisor for further details. All dimensions are approximate and should not be used for carpet sizes, appliance spaces or furniture. We operate a policy of continuous improvement and individual features such as kitchen and bathroom layouts, doors, windows, garages and elevational treatments may vary from time to time. Consequently these particulars should be treated as general guidance only and do not constitute a contract, part of a contract or a warranty. CH/CB/500/S00/S/01/M.



The Carver

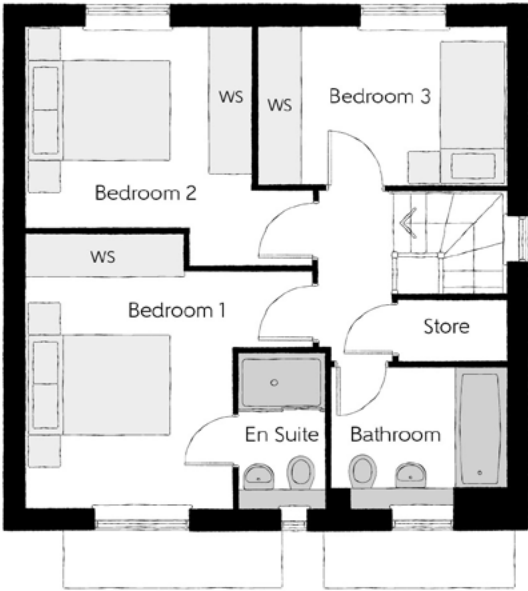
THREE BEDROOM HOME



Bellway

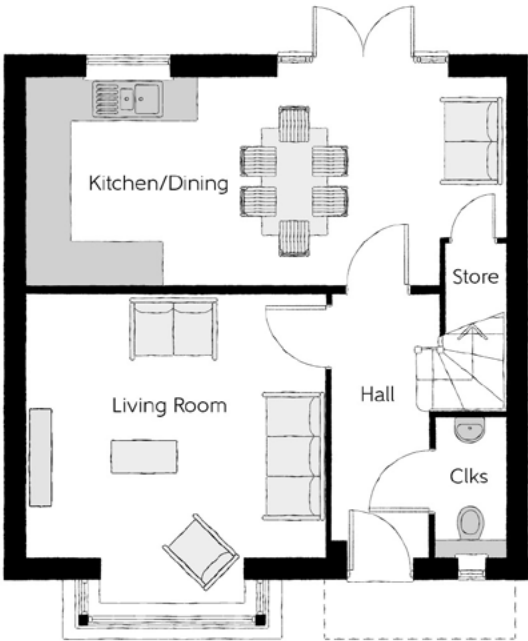
The Carver

Three bedroom home



First Floor

Bedroom 1	3.96m x 3.78m <small>(max) (max)</small>	13'0" x 12'5" <small>(max) (max)</small>
Bedroom 1 En Suite	1.20m x 2.11m	3'11" x 6'11"
Bedroom 2	3.12m x 3.31m <small>(max)</small>	10'3" x 10'10" <small>(max)</small>
Bedroom 3	3.44m x 2.20m	11'3" x 7'3"
Bathroom	2.42m x 1.91m	7'11" x 6'3"



Ground Floor

Kitchen/Dining	6.65m x 2.87m	21'10" x 9'5"
Living Room	4.16m x 4.30m <small>(inc. bay)</small>	13'8" x 14'1" <small>(inc. bay)</small>
Cloakroom	0.96m x 1.91m	3'2" x 6'3"

Clks - Cloakroom WS - Wardrobe Space (suggestion only, wardrobe not included)

Furniture arrangements are for illustrative purposes only. Items are not included, nor to scale.
The items shown in this key may be subject to change, and positions could vary from those indicated on this floorplan. Please refer to Sales Advisor for details of your selected plot. Computer generated image shown overleaf. External finishes, landscaping and configuration may vary from plot to plot. Please refer to Sales Advisor for further details. All dimensions are approximate and should not be used for carpet sizes, appliance spaces or furniture. We operate a policy of continuous improvement and individual features such as kitchen and bathroom layouts, doors, windows, garages and elevational treatments may vary from time to time. Consequently these particulars should be treated as general guidance only and do not constitute a contract, part of a contract or a warranty. CA/CB/500/S00/D/01/J.



The Sawyer

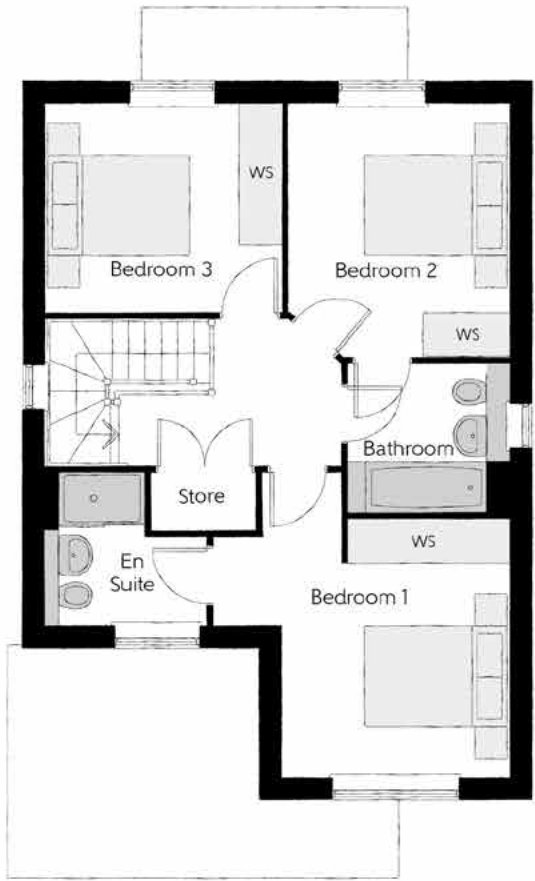
FOUR BEDROOM HOME



Bellway

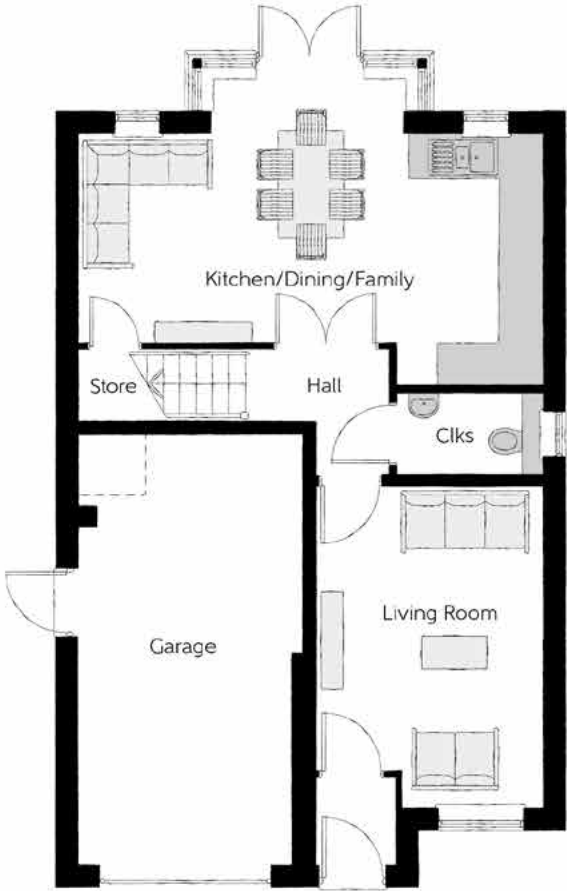
The Sawyer

Four bedroom home



First Floor

Bedroom 1	4.09m x 4.23m <small>(max)</small>	13'5" x 13'11" <small>(max)</small>
Bedroom 1 En Suite	2.25m x 2.10m <small>(max)</small>	7'4" x 6'11" <small>(max)</small>
Bedroom 2	3.04m x 3.54m	10'0" x 11'7"
Bedroom 3	3.30m x 2.91m	10'10" x 9'7"
Bathroom	2.20m x 2.04m	7'3" x 6'8"



Ground Floor

Kitchen/Dining/Family	6.42m x 3.51m <small>(max)</small>	21'1" x 11'6" <small>(max)</small>
Living Room	3.16m x 4.45m	10'4" x 14'7"
Cloakroom	2.05m x 1.15m	6'9" x 3'9"
Garage	3.10m x 6.09m <small>(max)</small>	10'2" x 20'0" <small>(max)</small>

Clks - Cloakroom WS - Wardrobe Space (suggestion only, wardrobe not included)

Furniture arrangements are for illustrative purposes only. Items are not included, nor to scale.
The items shown in this key may be subject to change, and positions could vary from those indicated on this floorplan. Please refer to Sales Advisor for details of your selected plot. Computer generated image shown overleaf. External finishes, landscaping and configuration may vary from plot to plot. Please refer to Sales Advisor for further details. All dimensions are approximate and should not be used for carpet sizes, appliance spaces or furniture. We operate a policy of continuous improvement and individual features such as kitchen and bathroom layouts, doors, windows, garages and elevational treatments may vary from time to time. Consequently these particulars should be treated as general guidance only and do not constitute a contract, part of a contract or a warranty. SY/CB/500/S00/D/03/H.



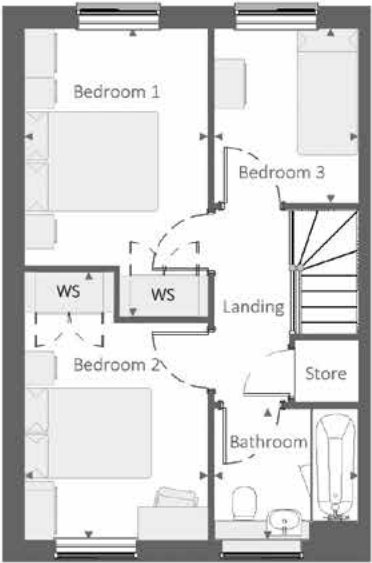
The NaylorLife

THREE BEDROOM HOME



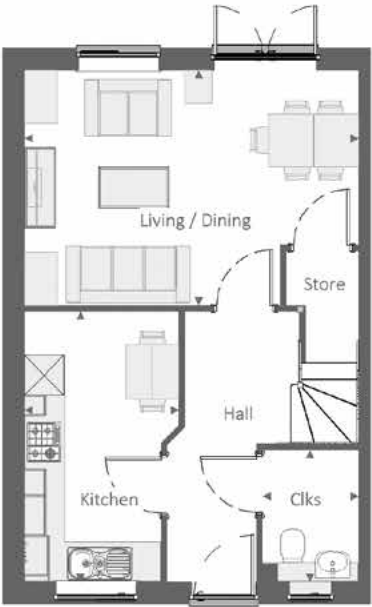
The NaylorLife

Three bedroom home



First Floor

Bedroom 1	2.75 m x 4.31 m	9'-0" x 14'-2"
Bedroom 2	2.75 m x 4.01 m	9'-0" x 13'-2"
Bedroom 3	2.16 m x 2.62 m	7'-1" x 8'-7"
Bathroom	2.16 m x 1.98 m	7'-1" x 6'-6"



Ground Floor

Living / Dining	5.01 m x 3.53 m	16'-5" x 11'-7"
Kitchen	2.32 m x 4.04 m	7'-7" x 13'-3"
Cloakroom	1.44 m x 1.98 m	4'-9" x 6'-6"

Clks - Cloakroom WS - Wardrobe Space (suggestion only, wardrobe not included)

Furniture arrangements are for illustrative purposes only. Items are not included, nor to scale.
The items shown in this key may be subject to change, and positions could vary from those indicated on this floorplan. Please refer to Sales Advisor for details of your selected plot. Computer generated image shown overleaf. External finishes, landscaping and configuration may vary from plot to plot. Please refer to Sales Advisor for further details. All dimensions are approximate and should not be used for carpet sizes, appliance spaces or furniture. We operate a policy of continuous improvement and individual features such as kitchen and bathroom layouts, doors, windows, garages and elevational treatments may vary from time to time. Consequently these particulars should be treated as general guidance only and do not constitute a contract, part of a contract or a warranty. 839 / SB (Rev H).



The Thespian

THREE BEDROOM HOME



Bellway



First Floor

Bedroom 1	2.95m x 3.56m	9'8" x 11'8"
Bedroom 1 En Suite	2.95m x 1.20m	9'8" x 3'11"
Bedroom 2	3.17m x 2.39m	10'5" x 7'10"
Bedroom 3	3.17m x 2.37m	10'5" x 7'9"
Bathroom	1.92m x 1.90m	6'4" x 6'3"



Ground Floor

Kitchen/Dining	3.11m x 4.85m	10'3" x 15'11"
Living Room	3.48m x 4.85m (max)	11'5" x 15'11" (max)
Cloakroom	1.92m x 0.96m	6'4" x 3'2"

Clks - Cloakroom WS - Wardrobe Space (suggestion only, wardrobe not included)

Furniture arrangements are for illustrative purposes only. Items are not included, nor to scale.
The items shown in this key may be subject to change, and positions could vary from those indicated on this floorplan. Please refer to Sales Advisor for details of your selected plot. Computer generated image shown overleaf. External finishes, landscaping and configuration may vary from plot to plot. Please refer to Sales Advisor for further details. All dimensions are approximate and should not be used for carpet sizes, appliance spaces or furniture. We operate a policy of continuous improvement and individual features such as kitchen and bathroom layouts, doors, windows, garages and elevational treatments may vary from time to time. Consequently these particulars should be treated as general guidance only and do not constitute a contract, part of a contract or a warranty. TH/CB/500/S00/D/01a/L.



The Cutler

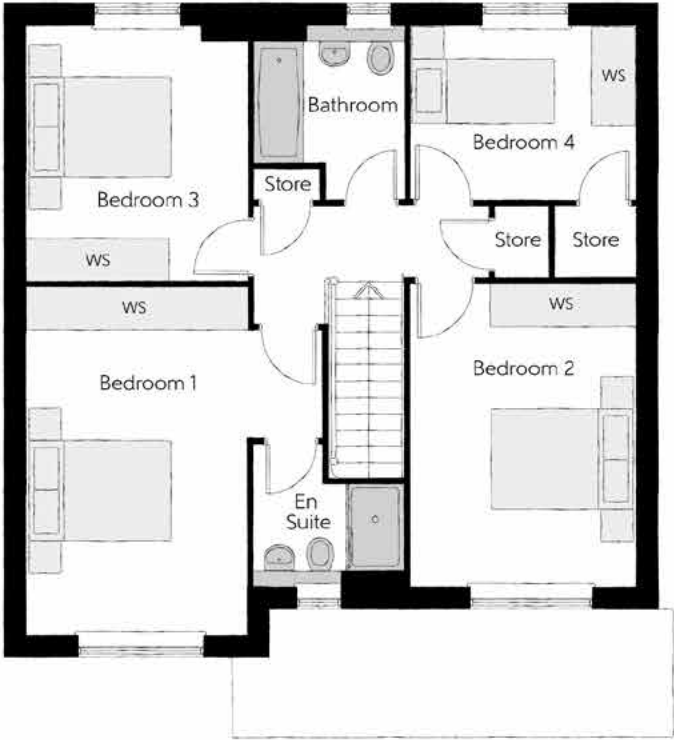
FOUR BEDROOM HOME



Bellway

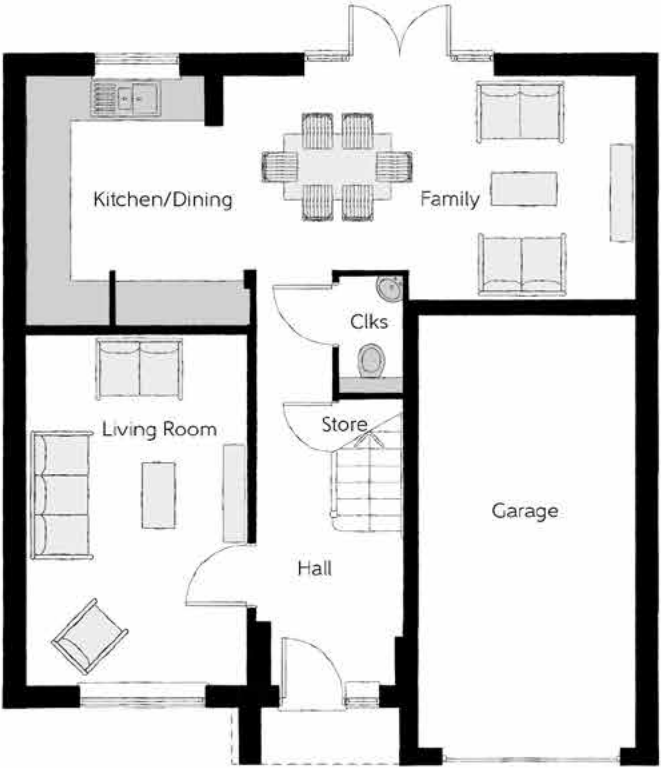
The Cutler

Four bedroom home



First Floor		
Bedroom 1	4.10m x 4.83m	13'5" x 15'10"
Bedroom 1 En Suite	2.10m x 1.95m	6'11" x 6'5"
Bedroom 2	3.12m x 4.21m	10'3" x 13'10"
Bedroom 3	3.05m x 3.53m	10'0" x 11'7"
Bedroom 4	3.16m x 2.40m	10'4" x 7'10"
Bathroom	2.07m x 2.40m	6'9" x 7'10"

Ground Floor		
Kitchen/Dining	5.33m x 3.45m	17'6" x 11'4"
Family	3.12m x 3.11m	10'3" x 10'3"
Living Room	3.05m x 4.85m	10'0" x 15'11"
Cloakroom	0.90m x 1.63m	3'0" x 5'4"
Garage	3.05m x 6.05m	10'0" x 19'10"



Clks - Cloakroom WS - Wardrobe Space (suggestion only, wardrobe not included)

Furniture arrangements are for illustrative purposes only. Items are not included, nor to scale.
The items shown in this key may be subject to change, and positions could vary from those indicated on this floorplan. Please refer to Sales Advisor for details of your selected plot. Computer generated image shown overleaf. External finishes, landscaping and configuration may vary from plot to plot. Please refer to Sales Advisor for further details. All dimensions are approximate and should not be used for carpet sizes, appliance spaces or furniture. We operate a policy of continuous improvement and individual features such as kitchen and bathroom layouts, doors, windows, garages and elevational treatments may vary from time to time. Consequently these particulars should be treated as general guidance only and do not constitute a contract, part of a contract or a warranty. CU/CB/500/S00/D/02/Q.



The ReedmakerLife

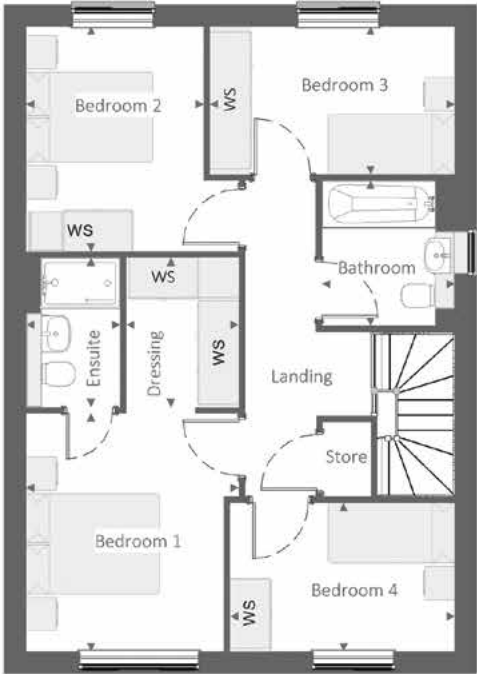
FOUR BEDROOM HOME



Bellway

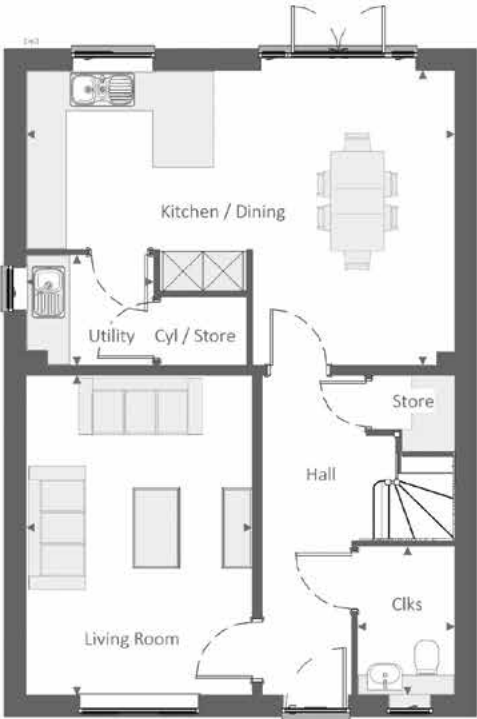
The ReedmakerLife

Four bedroom home



First Floor

Bedroom 1	3.19 m x 3.56 m	10'-5" x 11'-8"
Dressing	1.69 m x 2.24 m	5'-6" x 7'-4"
Bedroom 1 Ensuite	1.41 m x 2.24 m	4'-8" x 7'-4"
Bedroom 2	2.66 m x 3.37 m	8'-9" x 11'-1"
Bedroom 3	3.67 m x 2.21 m	12'-1" x 7'-3"
Bedroom 4	3.37 m x 2.22 m	11'-1" x 7'-4"
Bathroom	1.99 m x 2.18 m	6'-6" x 7'-2"



Ground Floor

Kitchen / Dining	6.42 m x 4.42 m	21'-1" x 14'-6"
Living Room	3.39 m x 4.78 m	11'-1" x 15'-8"
Utility	1.91 m x 1.65 m	6'-3" x 5'-5"
Cloakroom	1.46 m x 2.22 m	4'-10" x 7'-4"

Clks - Cloakroom WS - Wardrobe Space (suggestion only, wardrobe not included)

Furniture arrangements are for illustrative purposes only. Items are not included, nor to scale.
The items shown in this key may be subject to change, and positions could vary from those indicated on this floorplan. Please refer to Sales Advisor for details of your selected plot. Computer generated image shown overleaf. External finishes, landscaping and configuration may vary from plot to plot. Please refer to Sales Advisor for further details. All dimensions are approximate and should not be used for carpet sizes, appliance spaces or furniture. We operate a policy of continuous improvement and individual features such as kitchen and bathroom layouts, doors, windows, garages and elevational treatments may vary from time to time. Consequently these particulars should be treated as general guidance only and do not constitute a contract, part of a contract or a warranty. 13/09/2024/01/A.

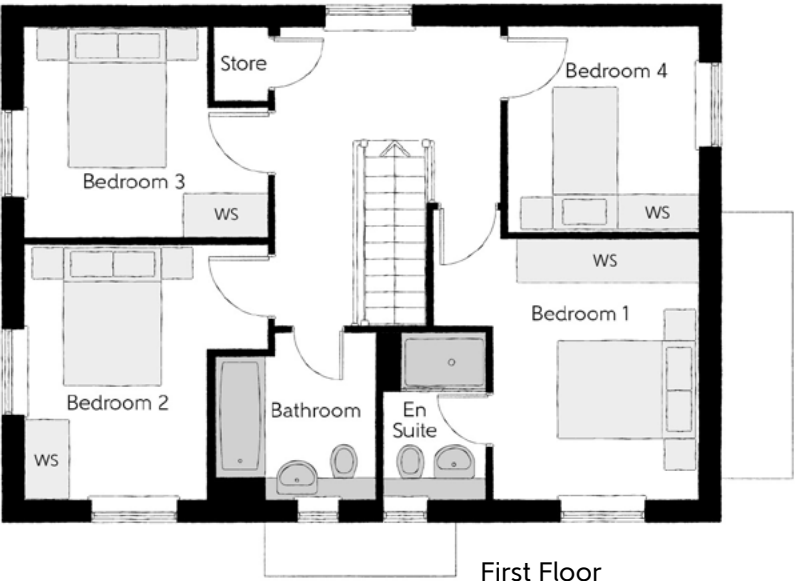


The Pargeter

FOUR BEDROOM HOME

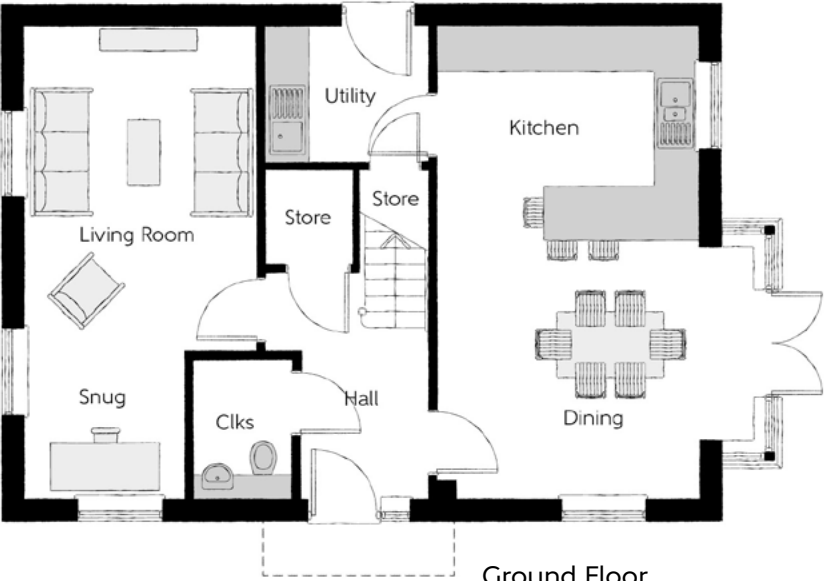


Bellway



First Floor

Bedroom 1	3.66m x 3.60m <small>(max) (max)</small>	12'0" x 11'10" <small>(max) (max)</small>
Bedroom 1 En Suite	1.44m x 2.27m	4'9" x 7'6"
Bedroom 2	3.39m x 3.54m <small>(max)</small>	11'1" x 11'7" <small>(max)</small>
Bedroom 3	3.39m x 2.91m <small>(max)</small>	11'1" x 9'6" <small>(max)</small>
Bedroom 4	2.64m x 2.85m	8'8" x 9'4"
Bathroom	2.23m x 2.27m	7'4" x 7'6"



Ground Floor

Kitchen/Dining	4.39m x 6.54m <small>(inc bay)</small>	14'5" x 21'5" <small>(inc bay)</small>
Living Room	3.20m x 4.49m	10'6" x 14'9"
Snug	2.12m x 2.05m	7'0" x 6'9"
Utility	2.25m x 1.87m	7'5" x 6'2"
Cloakroom	1.43m x 1.90m	4'8" x 6'3"

Clks - Cloakroom WS - Wardrobe Space (suggestion only, wardrobe not included)

Furniture arrangements are for illustrative purposes only. Items are not included, nor to scale.
The items shown in this key may be subject to change, and positions could vary from those indicated on this floorplan. Please refer to Sales Advisor for details of your selected plot. Computer generated image shown overleaf. External finishes, landscaping and configuration may vary from plot to plot. Please refer to Sales Advisor for further details. All dimensions are approximate and should not be used for carpet sizes, appliance spaces or furniture. We operate a policy of continuous improvement and individual features such as kitchen and bathroom layouts, doors, windows, garages and elevational treatments may vary from time to time. Consequently these particulars should be treated as general guidance only and do not constitute a contract, part of a contract or a warranty. PG/CB/500/S00/D/01/A.



The LorimerLife

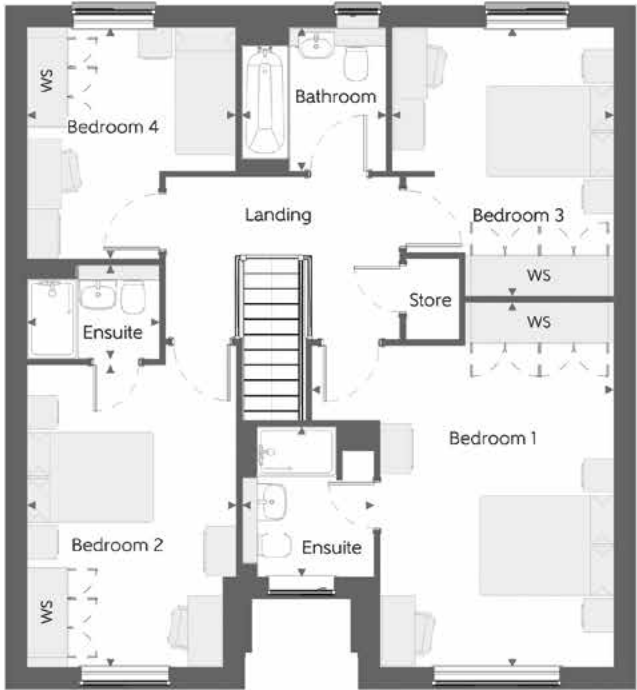
FOUR BEDROOM HOME



Bellway

The LorimerLife

Four bedroom home



First Floor

Bedroom 1	4.52 m x 5.46 m	14'-10" x 17'-11"
Bedroom 1 Ensuite	1.97 m x 2.26 m	6'-6" x 7'-5"
Bedroom 2	3.14 m x 4.52 m	10'-4" x 14'-10"
Bedroom 2 Ensuite	1.99 m x 1.41 m	6'-6" x 4'-8"
Bedroom 3	3.32 m x 4.02 m	10'-11" x 13'-2"
Bedroom 4	3.12 m x 3.46 m	10'-3" x 11'-4"
Bathroom	2.17 m x 2.14 m	7'-1" x 7'-0"



Ground Floor

Kitchen / Dining	5.16 m x 3.28 m	16'-11" x 10'-9"
Family	3.63 m x 3.28 m	11'-11" x 10'-9"
Living Room	3.50 m x 4.38 m	11'-6" x 14'-5"
Utility	1.91 m x 2.04 m	6'-3" x 6'-8"
Cloakroom	1.50 m x 2.04 m	4'-11" x 6'-8"
Garage	3.07 m x 6.11 m	10'-1" x 20'-1"

Clks - Cloakroom WS - Wardrobe Space (suggestion only, wardrobe not included)

Furniture arrangements are for illustrative purposes only. Items are not included, nor to scale.
The items shown in this key may be subject to change, and positions could vary from those indicated on this floorplan. Please refer to Sales Advisor for details of your selected plot. Computer generated image shown overleaf. External finishes, landscaping and configuration may vary from plot to plot. Please refer to Sales Advisor for further details. All dimensions are approximate and should not be used for carpet sizes, appliance spaces or furniture. We operate a policy of continuous improvement and individual features such as kitchen and bathroom layouts, doors, windows, garages and elevational treatments may vary from time to time. Consequently these particulars should be treated as general guidance only and do not constitute a contract, part of a contract or a warranty. 1554 / SB (Rev L).



The MercerLife

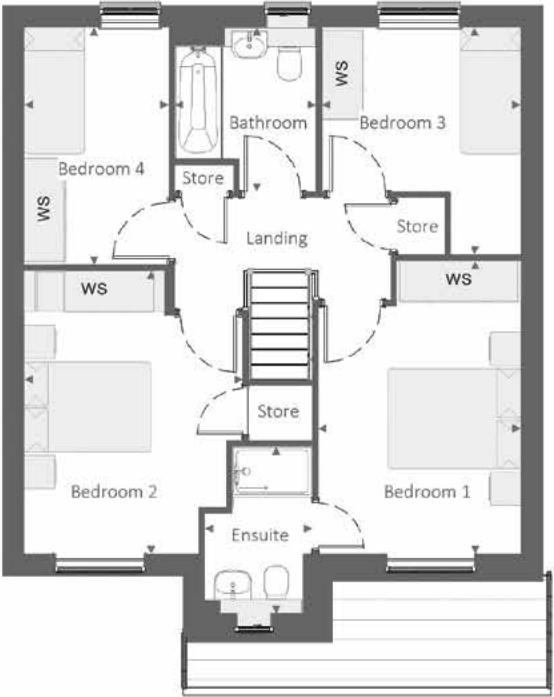
FOUR BEDROOM HOME



Bellway

The MercerLife

Four bedroom home



First Floor

Bedroom 1	3.03 m	x	4.38 m	9'-11"	x	14'-5"
Bedroom 1 Ensuite	1.61 m	x	2.51 m	5'-3"	x	8'-3"
Bedroom 2	3.27 m	x	4.23 m	10'-9"	x	13'-11"
Bedroom 3	2.98 m	x	3.41 m	9'-9"	x	11'-2"
Bedroom 4	2.16 m	x	3.56 m	7'-1"	x	11'-8"
Bathroom	2.12 m	x	2.46 m	6'-11"	x	8'-1"



Ground Floor

Kitchen / Dining	5.27 m	x	3.34 m	17'-4"	x	10'-11"
Living Room	3.27 m	x	4.40 m	10'-9"	x	14'-5"
Utility	2.07 m	x	1.74 m	6'-10"	x	5'-8"
Cloakroom	2.07 m	x	1.45 m	6'-10"	x	4'-9"
Garage	2.96 m	x	6.00 m	9'-9"	x	19'-8"

Clks - Cloakroom WS - Wardrobe Space (suggestion only, wardrobe not included)

Furniture arrangements are for illustrative purposes only. Items are not included, nor to scale.

The items shown in this key may be subject to change, and positions could vary from those indicated on this floorplan. Please refer to Sales Advisor for details of your selected plot. Computer generated image shown overleaf. External finishes, landscaping and configuration may vary from plot to plot. Please refer to Sales Advisor for further details. All dimensions are approximate and should not be used for carpet sizes, appliance spaces or furniture. We operate a policy of continuous improvement and individual features such as kitchen and bathroom layouts, doors, windows, garages and elevational treatments may vary from time to time. Consequently these particulars should be treated as general guidance only and do not constitute a contract, part of a contract or a warranty. 1160 / SB (Rev J).

Specification

FINISHES	Ceilings	Crown White Matt Emulsion	●	●	●
	Walls	Crown White Matt Emulsion	●	●	●
	Floors	Concrete GF ; Chipboard FF	●	●	●
	Window Cills	White Gloss MDF	●	●	●
	Stairs	White Gloss MDF Strings	●	●	●
	Balusters	White Gloss Stop Chamfered Balusters	●	●	●
	Newel Posts	White Gloss Stop Chamfered Newels	●	●	●
	Newel Caps	White Gloss Flat Top Newel Caps	●	●	●
	Handrail	White Gloss Heavy Duty Handrail	●	●	●
	Skirting	White Gloss 94x14 MDF Grooved & Chamfered	●	●	
		White Gloss 120x14 MDF Grooved & Chamfered			●
	Architrave	White Gloss 69x18 MDF Grooved & Chamfered	●	●	●
	Internal Doors	White Pre Finished Vertical Panel Internal Doors	●	●	●
	Ironmongery	Chrome SR100 Door Furniture	●	●	●
KITCHEN	Carcass	Premium Grade 18mm thk Colour Matched Carcass	●	●	●
	Frontals	Bellway Band B options^	●	●	●
		Bellway Band C options^			●
	Units	Frontal Matching Table Ends	●	●	
		Unit Framing			●
	Worktops	40mm Square Edge Worktops with Upstand	●	●	●
	Kitchen Sink	Leisure Linear Single Bowl Stainless Steel Sink inc. Sink Liner	●		
		Leisure Linear Bowl & Half Stainless Steel Sink inc. Sink Liner		●	
		Leisure Euroline Bowl & Half Stainless Steel Sink inc. Sink Liner			●
	Utility Sink	Leisure Linear Single Bowl Stainless Steel Sink inc. Sink Liner		●	
		Leisure Euroline Single Bowl Stainless Steel Sink inc. Sink Liner			●
	Appliances Oven	Zanussi Single Oven ZOB343X	●	●	
		Zanussi Single Oven ZOB35471XK			●
	Appliances Hob	Zanussi 4 Burner Gas Hob ZGH62414XS & SS Splashback	●	●	
		Zanussi 4 Burner Gas Hob ZGH65411XB & SS Splashback			●
	Appliances Extractor	Zanussi Cooker Hood Extractor ZHC60156X	●	●	●
	Appliances Extractor (Island)	Cooker Hood Extractor LF1519X††			●
	Appliances Microwave	Zanussi Microwave ZKK47901XK			●
	Appliances Fridge Freezer	Fridge/Freezer Space Only	●	●	
		Zanussi 70/30 Fridge/Freezer ZBB28441SV			●
WETROOMS	Appliance Dishwasher	Removable Unit**	●	●	
		Zanussi Dishwasher ZDT21006FA			●
	Appliance Washing Machine	Washing Machine Space Only	●	●	●
	Cloaks - WC	Roca DEBBA WC with Concealed Cistern & PL1 Flush Plate†††	●	●	●
	Cloaks - Basin	Roca Wash Hand Basin††	●	●	●
	Cloaks - Brassware	Bristan PISA Small Basin Chrome Mixer Tap	●	●	●
	Cloaks - Tiling	Splashback Tiling to Wash Hand Basin with Flat Edge White Trim	●	●	●
	Bathroom - WC	Roca DEBBA WC with Concealed Cistern & PL1 Flush Plate†††	●	●	●
	Bathroom - Basin	Roca DEBBA 500 WHB with Full Pedestal	●	●	
		Roca DEBBA 550 WHB with Semi Pedestal			●
	Bathroom - Bath	Roca MALAGA Acrylic Bath & Rigid Bath Panel	●	●	●
	Bathroom - Brassware	Bristan PISA Chrome Bath & Basin Mixer Taps	●	●	
		Bristan SAIL Chrome Bath & Basin Mixer Taps			●

2 Bedroom Homes
3 Bedroom Homes
4 Bedroom Homes

WETROOMS	Bathroom - Shower Tray	Mira FLIGHT Low Shower Tray with Mira ELEVATE Enclosure††	●	●	●
	Bathroom - Shower	Mira RELATE EV Thermostatic Shower ‡	●	●	
		Mira RELATE EV Thermostatic Shower^^			●
	Bathroom - Tiling	1/2 Height Tiling (Band 2) to Wet Walls with Flat Edged White Trim* †	●	●	●
		1/2 Height Tiling (Band 3) to Wet Walls with Flat Edged Chrome Trim* †			●
	En Suite - WC	Roca DEBBA WC with Concealed Cistern & PL1 Flush Plate†††	●	●	●
	En Suite - Basin	Roca DEBBA 450 WHB with Full Pedestal	●	●	
		Roca DEBBA 550 WHB with Semi Pedestal			●
	En Suite - Brassware	Bristan PISA Chrome Bath & Basin Mixer Taps	●	●	
		Bristan SAIL Chrome Bath & Basin Mixer Taps			●
	En Suite - Shower Tray	Mira FLIGHT Low Shower Tray with Mira ELEVATE Enclosure††	●	●	●
	En-Suite - Shower	Mira RELATE EV Thermostatic Shower***	●	●	●
	En Suite - Tiling	1/2 Height Tiling (Band 2) to Wet Walls with Flat Edged White Trim†	●	●	●
		1/2 Height Tiling (Band 3) to Wet Walls with Flat Edged Chrome Trim†			●
HEATING	Boiler	Ideal LOGIC Combination Boiler	●	●	
		Ideal LOGIC Boiler & ThermaQ Evocyl HW Cylinder			●
	Controls	Dual Zoned 3 way Heating Programmer	●	●	●
	Radiator	Stelrad Compact Steel Panel Radiators with Grilles	●	●	●
	Towel Warmers	Flat Chrome to Bathroom Only			●
	Ventilation	Window Trickle Ventilators with Mechanical Extract Fans (system 1)	●	●	●
ELECTRICS	Consumer Unit	Wylex Consumer Unit	●	●	●
	USB Locations	Kitchen, Lounge & Bedroom 1 ONLY	●	●	●
	Shaver/Toothbrush Point	Bathroom ONLY	●	●	●
	Communications - Satellite	Dual Connection Satellite Points to Lounge	●	●	●
	Security - Fire	Optical Smoke Detector	●	●	●
	Sockets & Switches	Electrium CASA White Fittings	●	●	●
	Lighting	Pendant Fitting to Habitable Rooms	●	●	●
	Lighting - Kitchen	White Recessed Spot Lights Warm White	●	●	
		Polished Chrome Recessed Spot Lights Warm White			●
	Lighting - Bathroom & En-Suites	White Recessed Spot Lights Cool White	●	●	
		Polished Chrome Recessed Spot lights Cool White			●
	Lighting - External	External Light Clifton Brushed Steel Up/Down	●	●	●
	Communications - TV	TV Point to Lounge, Family, Bedroom 1 & Study	●	●	●
	Communications - Data	Cat 6 Network Point to Lounge, Family, Bedroom 1 & Study	●	●	●
	Communications - Voice	Telephone Point to Lounge	●	●	●
	Broadband	Ultrafast Fibre Connectivity	●	●	●
EXTERNALS	Security - Carbon	Honeywell XC70 Carbon Monoxide Detector	●	●	●
	Footpath & Patio	Grey PCC Flags 450x450x38's	●	●	●
	Drives	Bitmac Black††	●	●	●
	Landscaping - Front	Medallion Turf & Landscape Planting†††	●	●	●
	Landscaping - Rear	Gravelled area 3 metres in depth from the property, plus the standard patio area	●	●	●
	Maintenance	External Tap	●	●	●
	Number Plaque	Artisan Number Plaque	●	●	●

2 Bedroom Homes
3 Bedroom Homes
4 Bedroom Homes

* full height around bath where shower provided as standard
** at build stage
*** flow regulator fitted to bath mixer if serving single thermostatic shower & fed via combination boiler
† full height to shower enclosure
†† housetype dependent
††† inc soft close mechanism seat on 4 beds ONLY
‡ over bath ONLY incorporating MIRA bath screen 1.1863.004 where no shower elsewhere in dwelling
‡‡ plot dependent
‡‡‡ plot specific, refer to site layout
^ refer to site landscape layout
^^ soft close mechanism to doors and drawers
^^^ where provision of shower tray allows



Dedicated to delivering quality

An enhanced specification is the hallmark of The Artisan Collection.

All of our homes are equipped with superior fixtures and fittings, which dovetails perfectly with our focus on design and attention to detail.

Expertly crafted using state-of-the-art materials, your brand new home is finished to a high standard so you can start enjoying it the moment you get your keys.

"The overall finish of the home is perfect – Bellway really pay attention to every detail. The team were amazing and supported us throughout the process."

SAMI AND SARA,
HANWOOD PARK

Homes to love, built with care

From the first day you visit our sales centre, to the day you move in and beyond, we aim to provide a level of service and after-sales care that is second to none.

A number of quality checks are carried out on each of our new homes through the construction process and on completion. Once your home has passed all of our quality checks, you will be invited to attend your Home Demonstration which will provide an opportunity for you to understand the various elements of your new home. On move in day, our site and sales teams will be there to ensure that everything goes as smoothly as possible.

Once you've settled into your new home, Bellway has experienced after-sales teams to provide support and assistance whenever you need it. Our homes come with a 10-year NHBC Buildmark policy, or an equivalent warranty from another provider. This includes deposit protection from exchange of contracts, a two-year builder warranty from legal completion, and then eight years of structural defects insurance cover.*

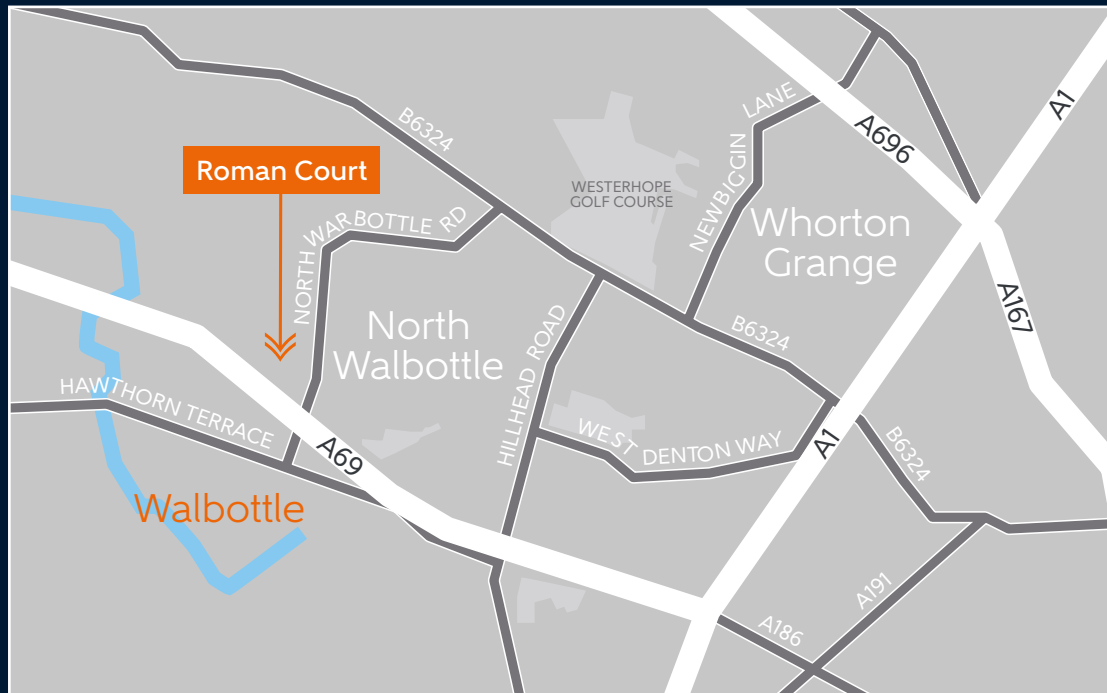
We are confident that our approach to building and selling quality homes, coupled with our customer care processes, will provide you with many years of enjoyment in your new home.



*For more details, visit the NHBC website at www.nhbc.co.uk/homeowners and view the 'Welcome to NHBC warranty and insurance' brochure, or refer to the brochure of your alternative warranty provider.



How to find us



Bellway abides by the New Homes Quality Code (NHQC), an independent industry code established to champion quality new homes and deliver better outcomes for customers.

Bellway

