



Wakeley Meadow

Wakeley Meadow is a development of 2, 3 and 4 bedroom homes, located in Rainham, Kent.



Bellway



Explore Rainham and beyond

Convenience, culture and countryside charm

Popular food and drink options include Cricketers in Rainham for drinks and pub grub, or the nearby Darjeeling Heights restaurant, which serves traditional Indian cuisine just a five-minute walk away.

Further afield, historic Rochester offers a rich cultural scene, highlighted by its iconic cathedral, castle and delightful independent shops. Nearby Chatham features additional attractions such as theatres and the celebrated Historic Dockyard.

For leisure, Upchurch River Valley Golf Course is less than four minutes away by car, while Cozenton Park Sports Centre boasts state-of-the-art facilities, including swimming pools, a gym and fitness studios. Just a short drive away, the historic Gillingham Strand Leisure Park provides outdoor family fun, including a lido with water slides and mini-golf.

Nature enthusiasts will appreciate the abundance of open spaces. Riverside Country Park, a picturesque expanse along the River Medway, offers walking and cycling trails, birdwatching and a welcoming visitor centre. Nearby Berengrave Nature Reserve

and Foxburrow Wood present ideal spots for strolls amidst ancient woodland, tranquil lakes and diverse wildlife. There are also a number of beaches within easy reach, perfect for peaceful days by the coast.

Families at Wakeley Meadow benefit from excellent local education. Numerous primary and secondary schools are conveniently accessible, while higher education opportunities are abundant at the Medway campuses of the University of Kent and Canterbury Christ Church University.

When it comes to getting around, Rainham railway station is five minutes away by bike and provides frequent direct services to London stations in as little as 49 minutes – ideal for commuters. Easy access to major road networks via the A2 and M2 motorways simplifies travel across Kent and beyond, while comprehensive local bus routes link residents seamlessly with surrounding communities. For international travel, it's an hour's drive to Gatwick Airport, which operates flights to hundreds of destinations worldwide.

Your ideal home in Kent's green gateway

Contemporary living on the edge of town

Wakeley Meadow presents a stunning collection of contemporary 2, 3, and 4 bedroom homes in the welcoming community of Rainham, Kent. Each property is thoughtfully designed to maximise comfort, convenience and energy efficiency, featuring smart interiors, electric vehicle charging points and beautifully landscaped surroundings. Set against a backdrop of tranquil countryside and with superb connections to nearby urban amenities, Wakeley Meadow is perfect for first-time buyers, growing

families and commuting professionals looking to blend suburban peace with city convenience. Rainham's vibrant High Street is within walking distance of Wakeley Meadow and plays home to supermarkets, pharmacies and banking alongside charming cafés, pubs and independent boutiques. Additional retail and dining opportunities can be found a 15-minute drive away in nearby Gillingham, home to larger shops, restaurants and the lively Medway Park Sports Centre.

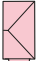
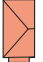







Development plan



3 Bedroom Homes

-  The Otham
Plot 2 & 24
-  The Yalding
Plots 3 & 25
-  The Quilter
Plot 17
-  The Tailor
Plots 29, 30, 37 & 38
-  The Thespian
Plots 32 & 39




4 Bedroom Homes

-  The Philosopher
Plots 1 & 6
-  The Scrivener
Plots 4, 5, 15, 18 & 31
-  The Bowyer
Plots 16 & 26
-  The Silversmith
Plot 27
-  The Minster
Plot 28


2-3 Bedroom Homes

-  Affordable Homes

Key to plan

-  Visitor parking
-  Bin collection point
-  Cycle stores

Material Finishes

-  - Town Brick Version
-  - Town Feature Brick Version
-  - Town Tile Hanging Version

The site plan is drawn to show the relative position of individual properties. NOT TO SCALE. This is a two dimensional drawing and will not show land contours and gradients, boundary treatments, landscaping or local authority street lighting. Footpaths subject to change. For details of individual properties and availability please refer to our Sales Advisor.



The Otham

THREE BEDROOM HOME



Bellway

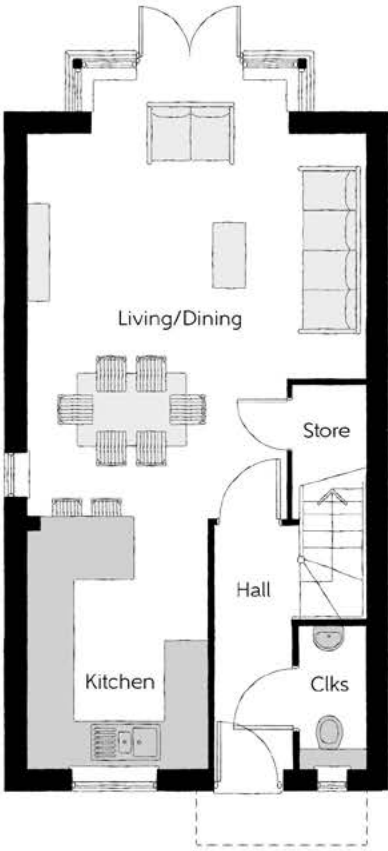
The Otham

Three bedroom home



First Floor

Bedroom 1	3.593m x 3.07m (max)	11'9" x 10'1" (max)
Bedroom 1 En Suite	1.960m x 1.475m	6'5" x 4'10"
Bedroom 2	3.358m x 2.589m	11'0" x 8'6"
Bedroom 3	3.358m x 1.986m	11'0" x 6'6"
Bathroom	2.150m x 1.905m	7'1" x 6'3"



Ground Floor

Kitchen	3.450m x 2.503m	11'4" x 8'3"
Living/Dining	6.120m x 4.668m (max) (max)	20'1" x 15'4" (max) (max)
Cloakroom	1.960m x 0.937m	6'5" x 3'1"

Clks - Cloakroom WS - Wardrobe Space (suggestion only, wardrobe not included)

Furniture arrangements are for illustrative purposes only. Items are not included, nor to scale.

The items shown in this key may be subject to change, and positions could vary from those indicated on this floorplan. Please refer to Sales Advisor for details of your selected plot. Computer generated image shown overleaf. External finishes, landscaping and configuration may vary from plot to plot. Please refer to Sales Advisor for further details. All dimensions are approximate and should not be used for carpet sizes, appliance spaces or furniture. We operate a policy of continuous improvement and individual features such as kitchen and bathroom layouts, doors, windows, garages and elevational treatments may vary from time to time. Consequently these particulars should be treated as general guidance only and do not constitute a contract, part of a contract or a warranty.



The Yalding

THREE BEDROOM HOME

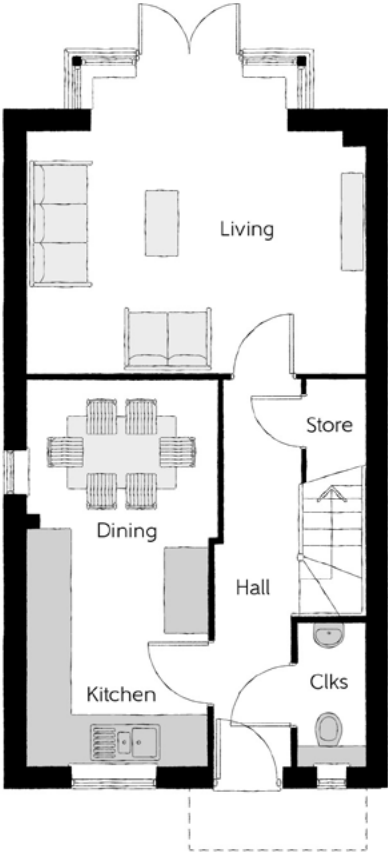


Bellway



First Floor

Bedroom 1	3.593m x 3.07m (max)	11'9" x 10'1" (max)
Bedroom 1 En Suite	1.960m x 1.475m	6'5" x 4'10"
Bedroom 2	3.358m x 2.589m	11'0" x 8'6"
Bedroom 3	3.358m x 1.986m	11'0" x 6'6"
Bathroom	2.150m x 1.905m	7'1" x 6'3"



Ground Floor

Kitchen/Dining	5.334m x 2.648m (max)	17'6" x 8'8" (max)
Living	4.668m x 4.146m	15'4" x 13'7"
Cloakroom	1.960m x 0.937m	6'5" x 3'1"

Clks - Cloakroom WS - Wardrobe Space (suggestion only, wardrobe not included)

Furniture arrangements are for illustrative purposes only. Items are not included, nor to scale.

The items shown in this key may be subject to change, and positions could vary from those indicated on this floorplan. Please refer to Sales Advisor for details of your selected plot. Computer generated image shown overleaf. External finishes, landscaping and configuration may vary from plot to plot. Please refer to Sales Advisor for further details. All dimensions are approximate and should not be used for carpet sizes, appliance spaces or furniture. We operate a policy of continuous improvement and individual features such as kitchen and bathroom layouts, doors, windows, garages and elevational treatments may vary from time to time. Consequently these particulars should be treated as general guidance only and do not constitute a contract, part of a contract or a warranty.



The Quilter

THREE BEDROOM HOME



Bellway

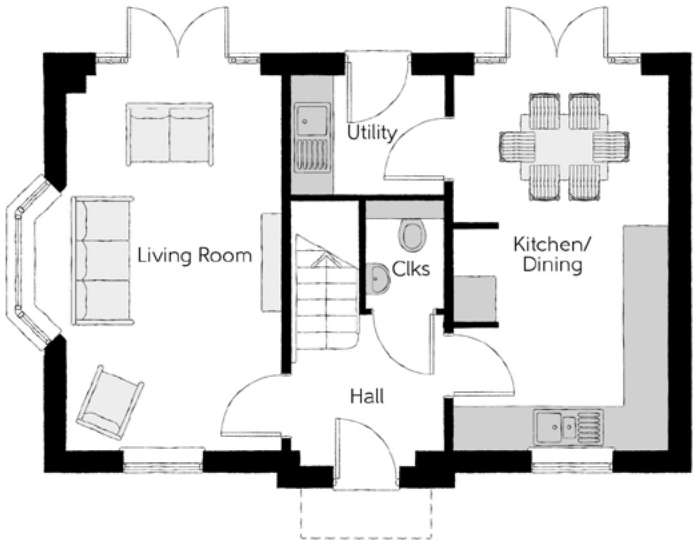
The Quilter

Three bedroom home



First Floor

Bedroom 1	3.02m x 3.12m	9'11" x 10'3"
Bedroom 1 En Suite	2.14m x 1.62m	7'0" x 5'4"
Bedroom 2	4.18m x 2.68m (max)	13'8" x 8'9" (max)
Bedroom 3	3.10m x 2.42m	10'2" x 7'11"
Bathroom	1.91m x 1.98m	6'3" x 6'6"



Ground Floor

Kitchen/Dining	2.96m x 5.19m	9'8" x 17'0"
Living Room	2.96m x 5.19m	9'8" x 17'0"
Utility	2.13m x 1.62m	7'0" x 5'4"
Cloakroom	1.07m x 1.53m	3'6" x 5'0"

Clks - Cloakroom WS - Wardrobe Space (suggestion only, wardrobe not included)

Furniture arrangements are for illustrative purposes only. Items are not included, nor to scale.

The items shown in this key may be subject to change, and positions could vary from those indicated on this floorplan. Please refer to Sales Advisor for details of your selected plot. Computer generated image shown overleaf. External finishes, landscaping and configuration may vary from plot to plot. Please refer to Sales Advisor for further details. All dimensions are approximate and should not be used for carpet sizes, appliance spaces or furniture. We operate a policy of continuous improvement and individual features such as kitchen and bathroom layouts, doors, windows, garages and elevational treatments may vary from time to time. Consequently these particulars should be treated as general guidance only and do not constitute a contract, part of a contract or a warranty.



The Thespian

THREE BEDROOM HOME



Bellway

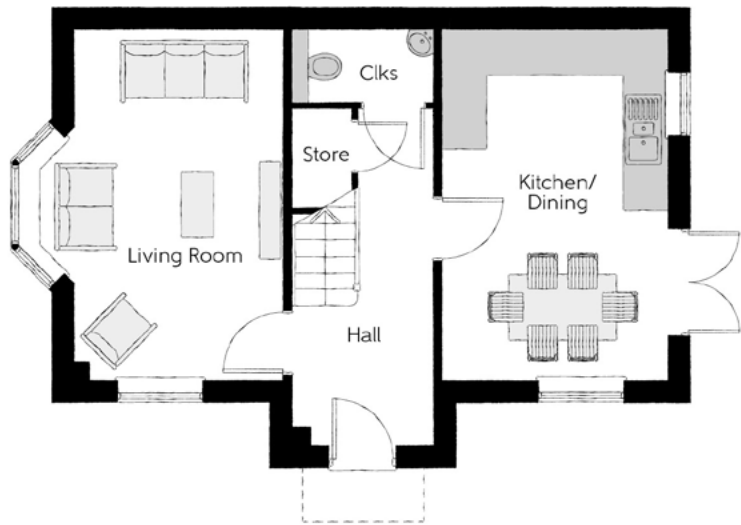
The Thespian

Three bedroom home



First Floor

Bedroom 1	2.95m x 3.56m	9'8" x 11'8"
Bedroom 1 En Suite	2.95m x 1.20m	9'8" x 3'11"
Bedroom 2	3.17m x 2.39m	10'5" x 7'10"
Bedroom 3	3.17m x 2.37m	10'5" x 7'9"
Bathroom	1.92m x 1.90m	6'4" x 6'3"



Ground Floor

Kitchen/Dining	3.11m x 4.85m	10'3" x 15'11"
Living Room	3.48m x 4.85m (max)	11'5" x 15'11" (max)
Cloakroom	1.92m x 0.96m	6'4" x 3'2"

Ciks - Cloakroom WS - Wardrobe Space (suggestion only, wardrobe not included)

Furniture arrangements are for illustrative purposes only. Items are not included, nor to scale.

The items shown in this key may be subject to change, and positions could vary from those indicated on this floorplan. Please refer to Sales Advisor for details of your selected plot. Computer generated image shown overleaf. External finishes, landscaping and configuration may vary from plot to plot. Please refer to Sales Advisor for further details. All dimensions are approximate and should not be used for carpet sizes, appliance spaces or furniture. We operate a policy of continuous improvement and individual features such as kitchen and bathroom layouts, doors, windows, garages and elevational treatments may vary from time to time. Consequently these particulars should be treated as general guidance only and do not constitute a contract, part of a contract or a warranty.



The Tailor

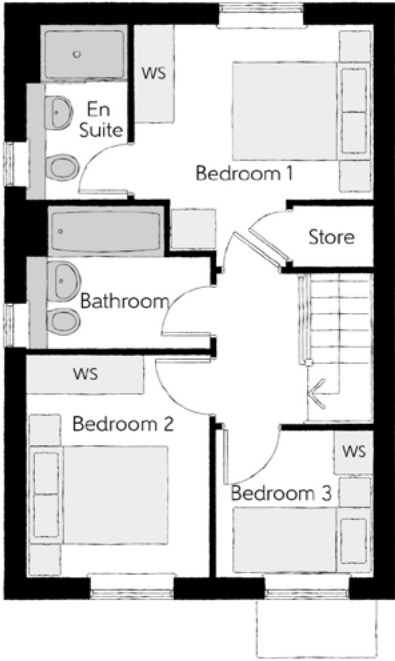
THREE BEDROOM HOME



Bellway

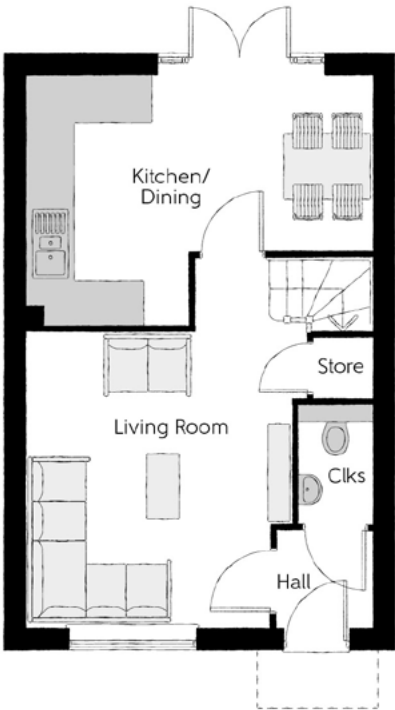
The Tailor

Three bedroom home



First Floor

Bedroom 1	3.29m x 3.34m <small>(max)</small>	10'10" x 11'0" <small>(max)</small>
Bedroom 1 En Suite	1.40m x 2.43m	4'7" x 8'0"
Bedroom 2	2.52m x 3.09m	8'3" x 10'2"
Bedroom 3	2.17m x 2.04m	7'1" x 6'8"
Bathroom	2.52m x 1.97m	8'3" x 6'5"



Ground Floor

Kitchen/Dining	4.78m x 3.45m <small>(max)</small>	15'8" x 11'4" <small>(max)</small>
Living Room	3.68m x 5.14m <small>(max)</small>	12'1" x 16'10" <small>(max)</small>
Cloakroom	1.01m x 1.66m	3'4" x 5'5"

Clks - Cloakroom WS - Wardrobe Space (suggestion only, wardrobe not included)

Furniture arrangements are for illustrative purposes only. Items are not included, nor to scale.

The items shown in this key may be subject to change, and positions could vary from those indicated on this floorplan. Please refer to Sales Advisor for details of your selected plot. Computer generated image shown overleaf. External finishes, landscaping and configuration may vary from plot to plot. Please refer to Sales Advisor for further details. All dimensions are approximate and should not be used for carpet sizes, appliance spaces or furniture. We operate a policy of continuous improvement and individual features such as kitchen and bathroom layouts, doors, windows, garages and elevational treatments may vary from time to time. Consequently these particulars should be treated as general guidance only and do not constitute a contract, part of a contract or a warranty.



The Philosopher

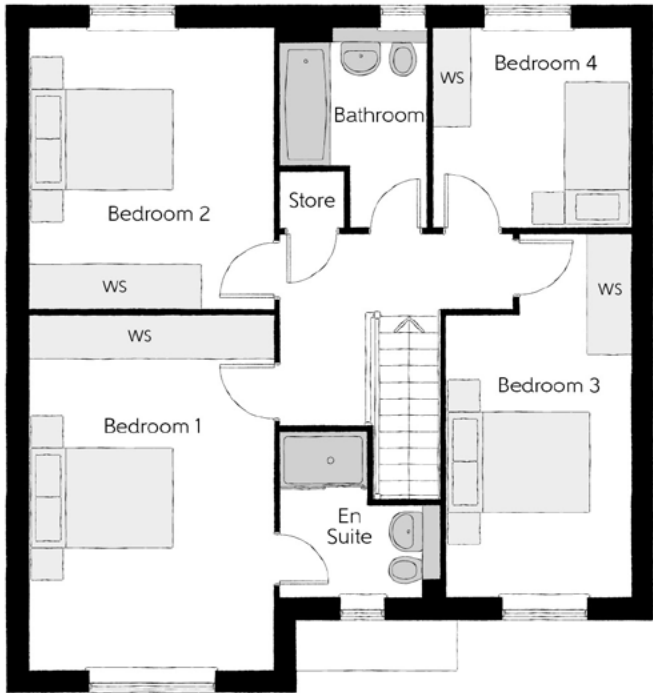
FOUR BEDROOM HOME



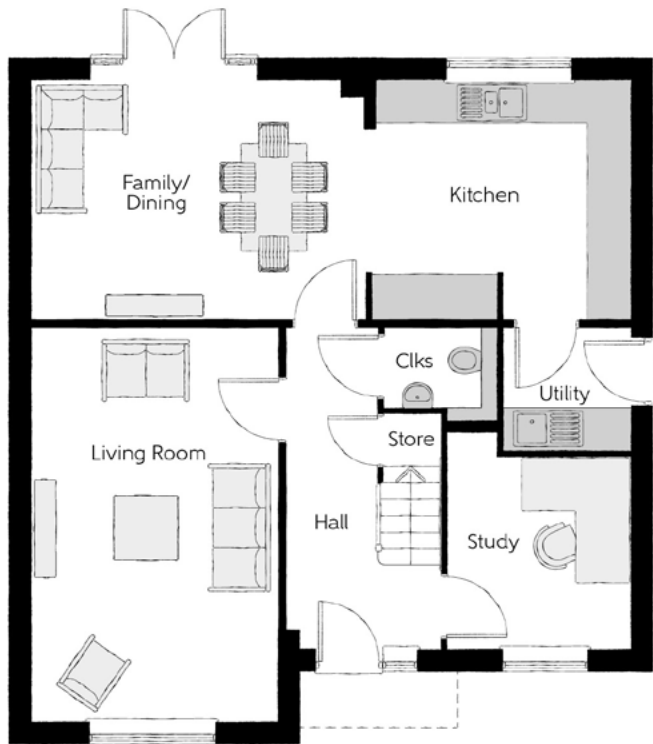
Bellway

The Philosopher

Four bedroom home



First Floor		
Bedroom 1	3.39m x 4.92m	11'1" x 16'2"
Bedroom 1 En Suite	2.23m x 2.27m (max) (max)	7'4" x 7'5" (max) (max)
Bedroom 2	3.39m x 3.89m	11'1" x 12'9"
Bedroom 3	2.55m x 5.03m (max) (max)	8'4" x 16'6" (max) (max)
Bedroom 4	2.75m x 2.76m	9'0" x 9'1"
Bathroom	2.02m x 2.76m (max) (max)	6'8" x 9'1" (max) (max)



Ground Floor		
Kitchen	3.71m x 3.30m	12'2" x 10'10"
Family/Dining	4.63m x 3.30m	15'2" x 10'10"
Living Room	3.39m x 5.45m	11'1" x 17'11"
Study	2.55m x 3.03m (max) (max)	8'4" x 9'11" (max) (max)
Utility	1.78m x 1.71m	5'10" x 5'7"
Cloakroom	1.57m x 1.32m (max) (max)	5'2" x 4'4" (max) (max)

Clks - Cloakroom WS - Wardrobe Space (suggestion only, wardrobe not included)

Furniture arrangements are for illustrative purposes only. Items are not included, nor to scale.

The items shown in this key may be subject to change, and positions could vary from those indicated on this floorplan. Please refer to Sales Advisor for details of your selected plot. Computer generated image shown overleaf. External finishes, landscaping and configuration may vary from plot to plot. Please refer to Sales Advisor for further details. All dimensions are approximate and should not be used for carpet sizes, appliance spaces or furniture. We operate a policy of continuous improvement and individual features such as kitchen and bathroom layouts, doors, windows, garages and elevational treatments may vary from time to time. Consequently these particulars should be treated as general guidance only and do not constitute a contract, part of a contract or a warranty.



The Scrivener

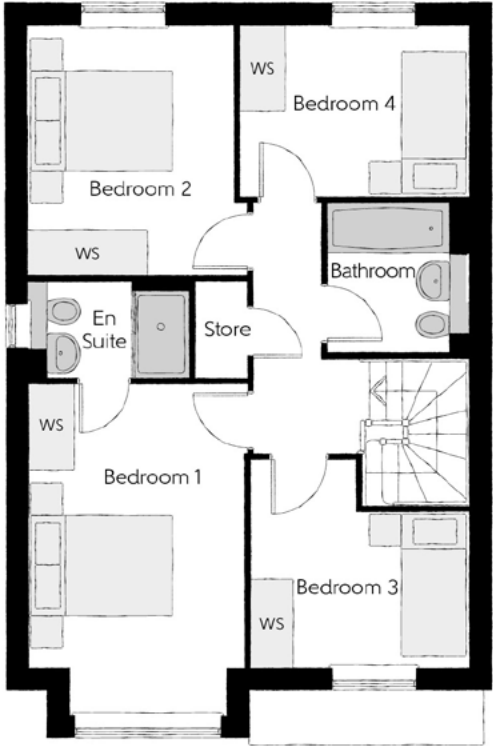
FOUR BEDROOM HOME



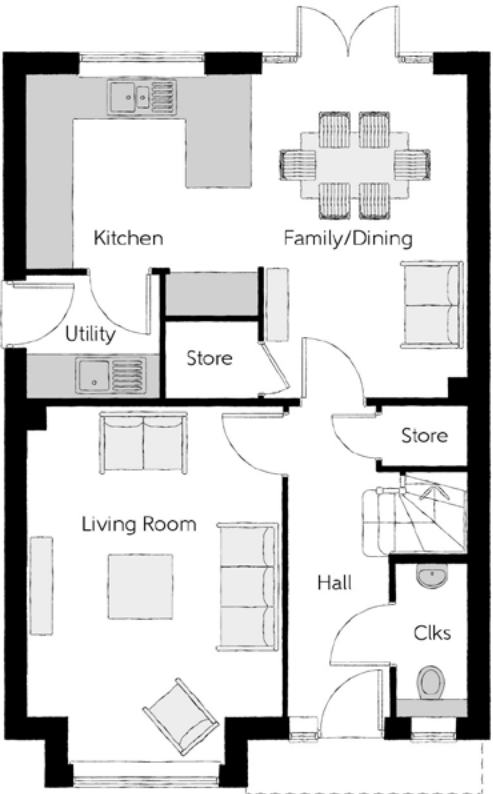
Bellway

The Scrivener

Four bedroom home



Bay window variation to some plots



Bay window variation to some plots

First Floor

Bedroom 1	2.96m x 4.59m (inc. bay)	9'9" x 15'1" (inc. bay)
Bedroom 1 En Suite	2.22m x 1.35m	7'4" x 4'5"
Bedroom 2	2.83m x 3.46m	9'3" x 11'4"
Bedroom 3	3.03m x 2.87m (max)	9'11" x 9'5" (max)
Bedroom 4	3.17m x 2.38m	10'5" x 7'10"
Bathroom	1.91m x 2.08m	6'3" x 6'10"

Ground Floor

Kitchen	3.20m x 3.33m	10'6" x 10'11"
Family/Dining	2.88m x 4.48m	9'6" x 14'8"
Living Room	3.54m x 4.94m (inc. bay)	11'7" x 16'3" (inc. bay)
Utility	1.84m x 1.71m	6'0" x 5'7"
Cloakroom	0.97m x 2.08m	3'2" x 6'10"

Clks - Cloakroom WS - Wardrobe Space (suggestion only, wardrobe not included)

Furniture arrangements are for illustrative purposes only. Items are not included, nor to scale.

The items shown in this key may be subject to change, and positions could vary from those indicated on this floorplan. Please refer to Sales Advisor for details of your selected plot. Computer generated image shown overleaf. External finishes, landscaping and configuration may vary from plot to plot. Please refer to Sales Advisor for further details. All dimensions are approximate and should not be used for carpet sizes, appliance spaces or furniture. We operate a policy of continuous improvement and individual features such as kitchen and bathroom layouts, doors, windows, garages and elevational treatments may vary from time to time. Consequently these particulars should be treated as general guidance only and do not constitute a contract, part of a contract or a warranty.



The Bowyer

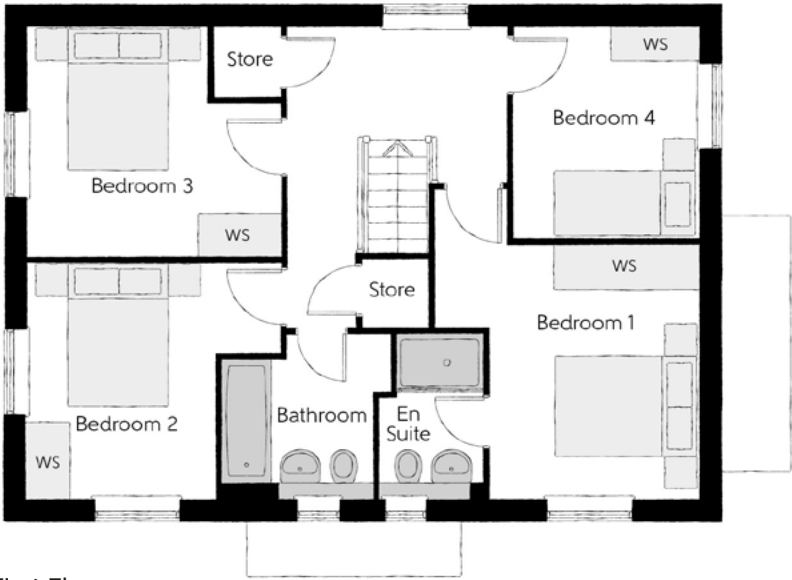
FOUR BEDROOM HOME



Bellway

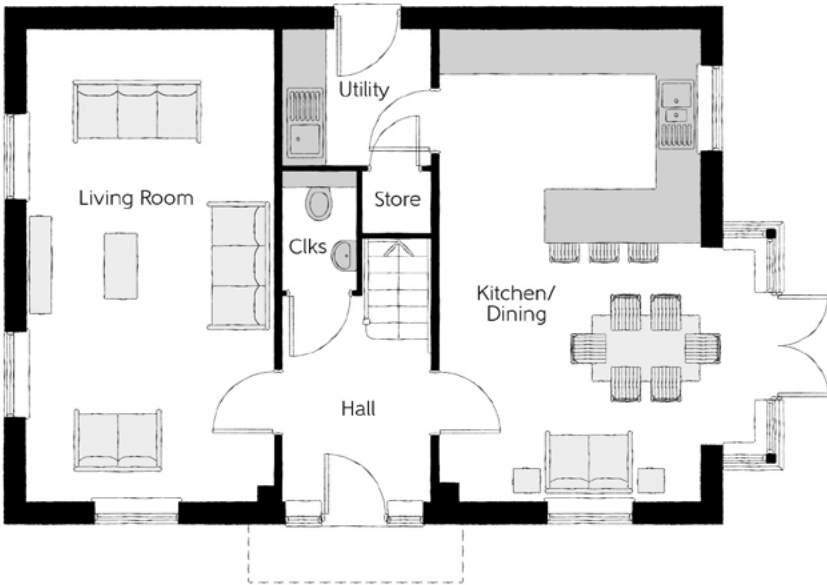
The Bowyer

Four bedroom home



First Floor

Bedroom 1	3.66m x 3.52m (max)	12'0" x 11'7" (max)
Bedroom 1 En Suite	1.44m x 2.25m	4'9" x 7'5"
Bedroom 2	3.53m x 3.27m (max)	11'7" x 10'9" (max)
Bedroom 3	3.53m x 3.18m (max)	11'7" x 10'5" (max)
Bedroom 4	2.58m x 2.93m	8'6" x 9'7"
Bathroom	2.35m x 2.25m (max)	7'9" x 7'5" (max)



Ground Floor

Kitchen/Dining	4.39m x 6.54m (inc. bay)	14'5" x 21'5" (inc. bay)
Living Room	3.42m x 6.54m	11'3" x 21'5"
Utility	2.03m x 1.87m	6'8" x 6'2"
Cloakroom	1.00m x 1.65m	3'3" x 5'5"

Clks - Cloakroom WS - Wardrobe Space (suggestion only, wardrobe not included)

Furniture arrangements are for illustrative purposes only. Items are not included, nor to scale.

The items shown in this key may be subject to change, and positions could vary from those indicated on this floorplan. Please refer to Sales Advisor for details of your selected plot. Computer generated image shown overleaf. External finishes, landscaping and configuration may vary from plot to plot. Please refer to Sales Advisor for further details. All dimensions are approximate and should not be used for carpet sizes, appliance spaces or furniture. We operate a policy of continuous improvement and individual features such as kitchen and bathroom layouts, doors, windows, garages and elevational treatments may vary from time to time. Consequently these particulars should be treated as general guidance only and do not constitute a contract, part of a contract or a warranty.



The Silversmith

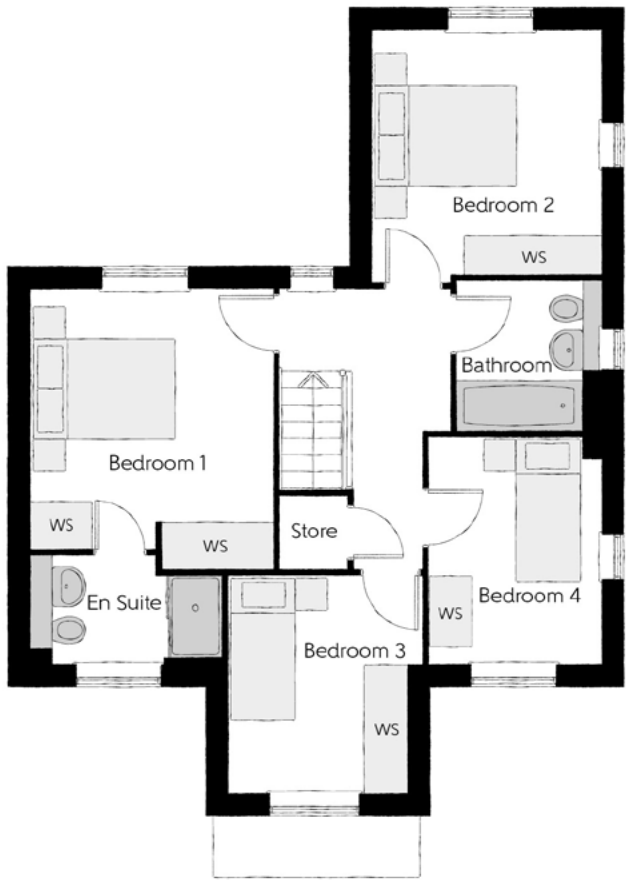
FOUR BEDROOM HOME



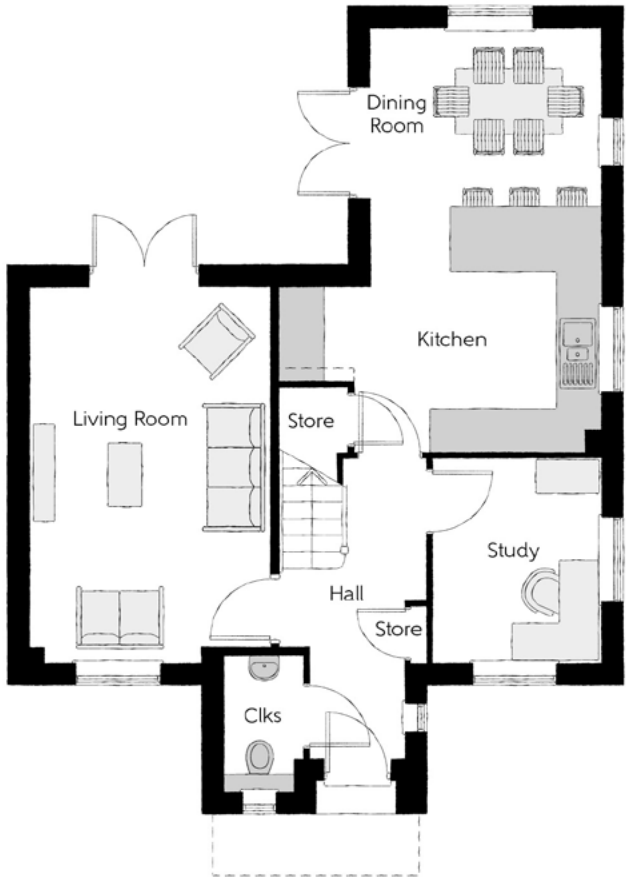
Bellway

The Silversmith

Four bedroom home



First Floor		
Bedroom 1	3.36m x 3.89m (max)	11'0" x 12'9" (max)
Bedroom 1 En Suite	2.61m x 1.50m	8'7" x 4'11"
Bedroom 2	3.16m x 3.36m	10'4" x 11'0"
Bedroom 3	2.39m x 3.14m	7'10" x 10'4"
Bedroom 4	2.70m x 3.01m (max)	8'10" x 9'10" (max)
Bathroom	1.93m x 2.11m	6'4" x 6'11"



Ground Floor		
Kitchen/Dining	4.44m x 5.88m (max)	14'7" x 19'3" (max)
Living Room	3.30m x 5.19m (max)	10'10" x 17'0" (max)
Study	2.32m x 2.80m (max)	7'7" x 9'2" (max)
Cloakroom	1.07m x 1.85m	3'6" x 6'1"

Clks - Cloakroom WS - Wardrobe Space (suggestion only, wardrobe not included) ---- - Reduced Head Height

Furniture arrangements are for illustrative purposes only. Items are not included, nor to scale.
The items shown in this key may be subject to change, and positions could vary from those indicated on this floorplan. Please refer to Sales Advisor for details of your selected plot. Computer generated image shown overleaf. External finishes, landscaping and configuration may vary from plot to plot. Please refer to Sales Advisor for further details. All dimensions are approximate and should not be used for carpet sizes, appliance spaces or furniture. We operate a policy of continuous improvement and individual features such as kitchen and bathroom layouts, doors, windows, garages and elevational treatments may vary from time to time. Consequently these particulars should be treated as general guidance only and do not constitute a contract, part of a contract or a warranty.



The Minster

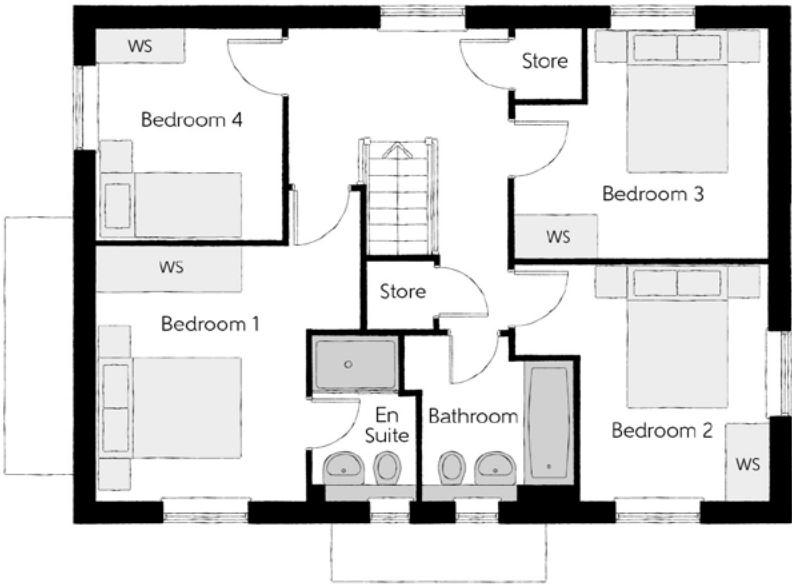
FOUR BEDROOM HOME



Bellway

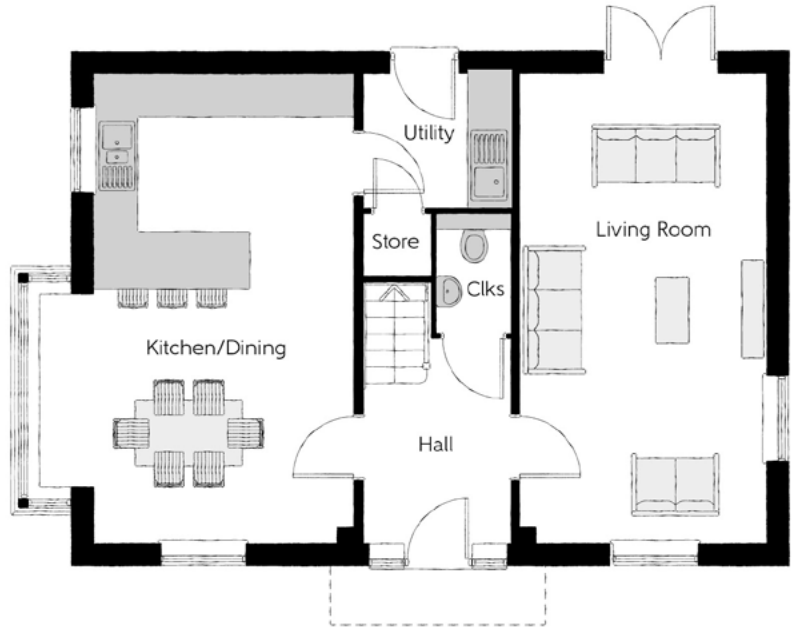
The Minster

Four bedroom home



First Floor

Bedroom 1	3.66m x 3.52m (max)	12'0" x 11'7" (max)
Bedroom 1 En Suite	1.44m x 2.25m	4'9" x 7'5"
Bedroom 2	3.53m x 3.27m (max)	11'7" x 10'9" (max)
Bedroom 3	3.53m x 3.18m (max)	11'7" x 10'5" (max)
Bedroom 4	2.58m x 2.93m	8'6" x 9'7"
Bathroom	2.35m x 2.25m (max)	7'9" x 7'5" (max)



Ground Floor

Kitchen/Dining	4.39m x 6.54m (inc. bay)	14'5" x 21'5" (inc. bay)
Living Room	3.42m x 6.54m	11'3" x 21'5"
Utility	2.03m x 1.87m	6'8" x 6'2"
Cloakroom	1.00m x 1.65m	3'3" x 5'5"

Clks - Cloakroom WS - Wardrobe Space (suggestion only, wardrobe not included)

Furniture arrangements are for illustrative purposes only. Items are not included, nor to scale.

The items shown in this key may be subject to change, and positions could vary from those indicated on this floorplan. Please refer to Sales Advisor for details of your selected plot. Computer generated image shown overleaf. External finishes, landscaping and configuration may vary from plot to plot. Please refer to Sales Advisor for further details. All dimensions are approximate and should not be used for carpet sizes, appliance spaces or furniture. We operate a policy of continuous improvement and individual features such as kitchen and bathroom layouts, doors, windows, garages and elevational treatments may vary from time to time. Consequently these particulars should be treated as general guidance only and do not constitute a contract, part of a contract or a warranty.

Specification

		2 Bedroom	3 Bedroom	4 Bedroom	
FINISHES	Entrance Doors:	GRP Insulated Door	•	•	•
	Loft Hatch:	Loft Hatch - Hinged Drop Down ▼ ♡♡♡	•	•	•
	Ceilings:	Crown White Matt Emulsion	•	•	•
	Walls:	Crown White Matt Emulsion	•	•	•
	Floors:	Concrete Ground Floor / Chipboard First Floor	•	•	•
	Window Cills:	White Satin MDF	•	•	•
	Stairs:	Timber Stair - White Satin MDF Strings	•	•	•
	Balusters:	White Satin Stop Chamfered Balusters	•	•	•
	Newel Posts:	White Satin Stop Chamfered Newels	•	•	•
	Newel Caps:	White Satin Flat Top Newel Caps	•	•	•
	Handrail:	White Satin Heavy Duty Handrail	•	•	•
	Skirting:	White Satin 94x14 MDF Grooved & Chamfered	•	•	
		White Satin 120x14 MDF Grooved & Chamfered			•
	Architrave:	White Satin 69x18 MDF Grooved & Chamfered	•	•	•
Internal Doors:	White Pre Finished Vertical Panel Internal Doors	•	•	•	
Ironmongery:	Chrome SR100 Door Furniture	•	•	•	
KITCHEN	Hob Splashback :	Glass Splashback	•	•	•
	Kitchen Tap:	Leisure Chrome Aquapace Tap	•	•	•
	Utility Tap:	Leisure Chrome Aquapace Tap		•	•
	Carcass:	Premium Grade 18mm thk Colour Matched Carcass	•	•	•
		Bellway Band B options ^^^	•	•	
	Frontals:	Bellway Band C options ^^^			•
		Frontal Matching Table Ends	•	•	
	Units:	Unit Framing			•
	Worktops:	40mm Square Edge Worktops with upstand	•	•	•
	Kitchen Sink:	Leisure Eaton Single Bowl SS Sink	•		
		Leisure Eaton Bowl & Half SS Sink		•	
		Leisure Atlanta Bowl & Half SS Sink			•
		Leisure Eaton Single Bowl SS Sink		•	
	Utility Sink:	Leisure Atlanta Single Bowl SS Sink			•
	Appliances Oven:	Electrolux Single Oven KOFGH00BX	•	•	
		Electrolux Single Oven KOFGH40TX			•
	Appliances Hob:	Electrolux Ceramic Hob EHF6140ISK	•	•	
		Electrolux Ceramic Hob LRR6436			•
Appliances Extractor:	Cooker Hood Extractor LFC316X (recirculating)	•	•	•	
Appliances Microwave:	Electrolux Combination Microwave KVLFE46TX			•	
Appliances Fridge Freezer:	Electrolux 70/30 Fridge Freezer LNS5LE18S	•	•	•	
Appliance Dishwasher:	Electrolux Dishwasher KEAF7200L	•	•	•	
Appliance Washing Machine:	Electrolux Washing Machine E772F402BI	•	•	•	
WET ROOMS	Cloaks - WC:	Roca DEBBA WC with Concealed Cistern & PL2 Flush Plate ‡	•	•	•
	Cloaks - Basin:	Roca Wash Hand Basin ♡	•	•	•
	Cloaks - Brassware:	Bristan PISA Small Basin Chrome Mixer Tap	•	•	•
	Cloaks - Tiling:	Band 2 Tiling to WC Boxing, Splashback Tiling to WHB, Flat Edge White Trim	•	•	
		Band 3 Tiling to WC Boxing, Splashback Tiling to WHB, Flat Edge Chrome Trim			•
	Bathroom - WC:	Roca DEBBA WC with Concealed Cistern & PL2 Flush Plate ‡	•	•	•
	Bathroom - Basin:	Roca DEBBA 500 WHB with Full Pedestal ^^	•	•	
		Roca DEBBA 550 WHB with Semi Pedestal ^^			•
	Bathroom - Bath:	Roca OSLO Acrylic Bath & Rigid Bath Panel	•	•	•
	Bathroom - Brassware:	Bristan PISA Chrome Bath & Basin Mixer Taps	•	•	
		Bristan SAIL Chrome Bath & Basin Mixer Taps			•
	Bathroom - Shower Tray:	Mira FLIGHT Low Shower Tray with Mira ELEVATE Enclosure ♡	•	•	•
	Bathroom - Shower:	Mira MINIMAL Single Thermostatic Shower †	•	•	
		Mira MINIMAL Single Thermostatic Shower ♡			•
	Bathroom - Tiling:	1/2 Height Tiling (Band 2) to Wet Walls with Flat Edged White Trim * ♦	•	•	
		1/2 Height Tiling (Band 3) to Wet Walls with Flat Edged Chrome Trim * ♦			•
	En-Suite - WC:	Roca DEBBA WC with Concealed Cistern & PL2 Flush Plate ‡	•	•	•
	En-Suite - Basin:	Roca DEBBA 450 WHB with Full Pedestal	•	•	
		Roca DEBBA 550 WHB with Semi Pedestal			•
	En-Suite - Brassware:	Bristan PISA Chrome Bath & Basin Mixer Taps	•	•	
Bristan SAIL Chrome Bath & Basin Mixer Taps				•	
En-Suite - Shower Tray:	Mira FLIGHT Low Shower Tray with Mira ELEVATE Enclosure ♡	•	•	•	
En-Suite - Shower:	Mira MINIMAL Single Thermostatic Shower ▼▼	•	•	•	
En-Suite - Tiling:	1/2 Height Tiling (Band 2) to Wet Walls with Flat Edged White Trim *	•	•		
En-Suite - Tiling:	1/2 Height Tiling (Band 3) to Wet Walls with Flat Edged Chrome Trim *			•	

		2 Bedroom	3 Bedroom	4 Bedroom	
MECHANICAL	Heating:	Under Floor Heating Ground Floor / Stelrad Compact LST Radiators First & Second Floors			
	Hot Water:	Air Source Heat Pump & Cylinder	•	•	•
	Waste Water Heat Recovery:	Waste Water Heat Recovery System ♡		•	•
	Controls:	ASHP Control & Thermostat (Homeowner) Control	•	•	•
	Radiators:	Stelrad Compact Steel Panel Radiators with Grilles	•	•	•
	Towel Warmers:	Flat Chrome to Bathroom & En-Suite 1			•
Ventilation:	Window Trickle Ventilators with Mechanical Extract Fans (system 3) dMEV		•	•	
ELECTRICS	PV Generation Optimiser:	Marlec Solar iBoost ♡			•
	Safety - Heat:	Heat Detector DET ♡♡	•	•	•
	Safety - Fire:	Optical Smoke Detectors LD2 D2 DET	•	•	•
	Safety - Carbon:	Carbon Monoxide Alarm (Battery Powered) - Deta	•	•	•
	Consumer Unit:	Wylex Consumer Unit	•	•	•
	Sockets & Switches:	Electrium CASA White Fittings	•	•	•
	Shaver / Toothbrush Point:	Bathroom & Ensuite 1 Only	•	•	•
	Lighting:	Pendant Fitting to Habitable Rooms	•	•	•
	Lighting - Kitchen:	White Recessed Spot Lights	•	•	•
	Lighting - Kitchen Under Unit:	Slimline Tri-Light	•	•	•
	Lighting - Bathroom & En-Suites:	White Recessed Spot Lights	•	•	•
	Lighting - External:	External Light Clifton Brushed Steel Up/Down (Front & Rear)	•	•	•
	Communications - TV:	TV Point to Living Room & Bedroom 1	•	•	•
	Communications - Data:	Cat 6 Network Point to Living Room & Study	•	•	
Cat 6 Network Point to Living Room, Family, Bedroom 1 & Study				•	
Broadband:	Ultrafast Fibre Connectivity (Openreach, Hyperoptic) ♦♦	•	•	•	
EXTERNALS & MISC	Build Method:	Masonry ‡‡	•	•	•
	Ecological:	Hedgehog Highway fencing adaption	•	•	•
	Maintenance:	External Tap	•	•	•
	Number Plaque:	Artisan Number Plaque	•	•	•
	Footpath & Patio:	Buff Riven PCC Flags 450x450x32's ‡‡	•	•	•
	Drives:	Block Paviours ♦♦♦	•	•	•
	Landscaping - Front:	Medallion Turf & Landscape Planting **	•	•	•
	Landscaping - Rear:	Rotovated Topsoil **	•	•	•
	Renewables:	Photovoltaic Array ‡‡	•	•	•
	EV Charging Terminal:	Universal Socket 7kW 🏠 @	•	•	•

* full height to shower enclosure

** refer site landscape layout

▼ where layout allows

▼▼ flow regulator fitted to bath mixer if serving single thermostatic shower & fed via combination boiler over bath ONLY incorporating MIRA bath screen 1.1863.004 where no shower elsewhere in dwelling

† at build stage

‡ inc soft close mechanism seat on 4 & 5 Bedroom Homes ONLY

‡‡ plot specific, refer site layout

♦ where provision of shower tray allows

♦ full height around bath where shower provided as standard

♦♦ consult with sales executive for specific development details

♦♦♦ plot dependent

♡ housetype dependent - liaise with sales executive

♡♡ kitchen only

♡♡♡ fire rated as necessary

🏠 housetype dependent on particular 4 bed housetypes - liaise with Sales Advisor

🏠 refer site layout

^^ semi recessed basin if AD M4(ii) applicable

^^^ soft close mechanism to doors & drawers

@ electrical infrastructure upgrade maybe required



Dedicated to delivering quality

An enhanced specification is the hallmark of The Artisan Collection.

All of our homes are equipped with superior fixtures and fittings, which dovetails perfectly with our focus on design and attention to detail.

Expertly crafted using state-of-the-art materials, your brand new home is finished to a high standard so you can start enjoying it the moment you get your keys.

"The overall finish of the home is perfect – Bellway really pay attention to every detail. The team were amazing and supported us throughout the process."

SAMI AND SARA,
HANWOOD PARK

Homes to love, built with care

From the first day you visit our sales centre, to the day you move in and beyond, we aim to provide a level of service and after-sales care that is second to none.

A number of quality checks are carried out on each of our new homes through the construction process and on completion. Once your home has passed all of our quality checks, you will be invited to attend your Home Demonstration which will provide an opportunity for you to understand the various elements of your new home. On move in day, our site and sales teams will be there to ensure that everything goes as smoothly as possible.

Once you've settled into your new home, Bellway has experienced after-sales teams to provide support and assistance whenever you need it. Our homes come with a 10-year NHBC Buildmark policy, or an equivalent warranty from another provider. This includes deposit protection from exchange of contracts, a two-year builder warranty from legal completion, and then eight years of structural defects insurance cover.*

We are confident that our approach to building and selling quality homes, coupled with our customer care processes, will provide you with many years of enjoyment in your new home.



*For more details, visit the NHBC website at www.nhbc.co.uk/homeowners and view the 'Welcome to NHBC warranty and insurance' brochure, or refer to the brochure of your alternative warranty provider.



How to find us



Bellway abides by the New Homes Quality Code (NHQC), an independent industry code established to champion quality new homes and deliver better outcomes for customers.

Bellway

