



Stargate Meadows

DEVELOPMENT NAME IS A DEVELOPMENT
OF 2, 3 AND 4-BEDROOM HOMES
LOCATED IN RYTON, TYNE AND WEAR.

Ashberry
Homes

The perfect place to build your future

With a combination of local amenities, city buzz and an abundance of open space, historic Ryton offers the best of town, city and country.

The town centre provides essential shops and services, such as a post office, convenience store, medical centre, dentist and pharmacy.

Ryton benefits from an abundance of nearby green space, with parkland, a sports field and playgrounds. Alternatively, the Ryton Willows and Stargate Ponds nature reserves are perfect for a stroll.

Add to this a great selection of local schools and the buzz of Newcastle's city centre a 20-minute drive away and you have the ideal home for a variety of lifestyles.



“ We had a really good experience with Ashberry and we would definitely recommend them to a friend.

Charlotte and Michael
Ashberry Homes at Pirton Fields

The perfect place to build your future

Stargate Meadows is located in the historic town of Ryton, a short drive east of Newcastle and surrounded by beautiful rural landscape.

This desirable collection of 2, 3 and 4 bedroom homes enjoys a position close to the centre of Ryton, putting essentials within walking distance and the excitement of the city just down the road.

Each home has been painstakingly designed and built to the highest standards, offering high-quality, energy-efficient and versatile living spaces. Features include parking and gardens to all properties, and garages to larger plots.

Residents will also benefit from state-of-the-art internal specification and a finish that you would expect from of Ashberry's trademark attention to detail.

When you also consider picturesque rural scenery combined with convenient road links and regular rail services from nearby Blaydon Station, Stargate Meadows is sure to appeal, whether you are a first-time buyer, growing family or commuting professional.





Development Plan

EXISTING
RESIDENTIAL



PROPOSED
RESIDENTIAL

PROPOSED
RESIDENTIAL

2-3 Bedroom Homes

 Affordable Homes

2 Bedroom Homes

 The Sundew
Plots 158, 159, 168, 169 & 170

3 Bedroom Homes

 The Heather
Plots 141, 142, 171 & 172

 The Larkspur
Plots 131, 150, 151, 174 & 182

 The Palomino
Plot 134 & 149

4 Bedroom Homes

 The Jasmine
Plots 132, 133, 147, 148, 177 & 178

 The Allium
Plots 138, 139, 154, 180 & 181

 The Gardenia
Plots 140, 143, 152, 153 & 183

 The Angelica
Plots 144, 175 & 184

 The Camellia
Plots 136, 137, 145, 155 & 156

 The Clydesdale
Plots 135, 146, 157, 173, 176 & 179

Key to plan

- VP Visitor parking
- s/s Sub station
- bcp Bin collection point

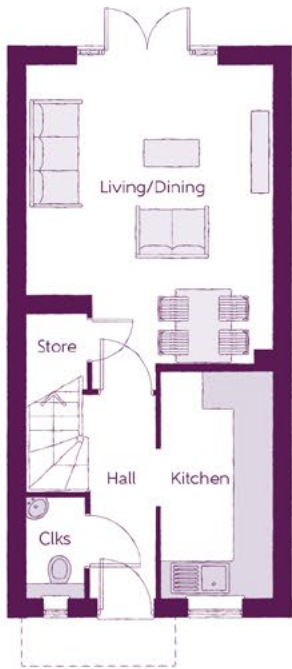
The site plan is drawn to show the relative position of individual properties. NOT TO SCALE. This is a two dimensional drawing and will not show land contours and gradients, boundary treatments, landscaping or local authority street lighting. Footpaths subject to change. For details of individual properties and availability please refer to our Sales Advisor.



The Sundew
2 BEDROOM HOME



The Sundew
2 BEDROOM HOME



Ground Floor

Kitchen	1.80m x 3.72m	5'11" x 12'2"
Living/Dining	3.99m x 4.92m (max)	13'1" x 16'2" (max)
Cloakroom	0.94m x 1.60m	3'1" x 5'3"



First Floor

Bedroom 1	3.99m x 4.04m (max)	13'1" x 13'3" (max)
Bedroom 1 En Suite	1.86m x 1.48m	6'1" x 4'10"
Bedroom 2	3.99m x 2.47m (max)	13'1" x 8'1" (max)
Bathroom	1.86m x 1.92m	6'1" x 6'3"

The items shown in this key may be subject to change, and positions could vary from those indicated on this floorplan. Please refer to Sales Advisor for details of your selected plot. Computer generated image shown overleaf. External finishes, landscaping and configuration may vary from plot to plot. Please refer to Sales Advisor for further details. All dimensions are approximate and should not be used for carpet sizes, appliance spaces or furniture. We operate a policy of continuous improvement and individual features such as kitchen and bathroom layouts, doors, windows, garages and elevational treatments may vary from time to time. Consequently these particulars should be treated as general guidance only and do not constitute a contract, part of a contract or a warranty. LU/CB/500/S00/D/01/E.



The Heather

3 BEDROOM HOME



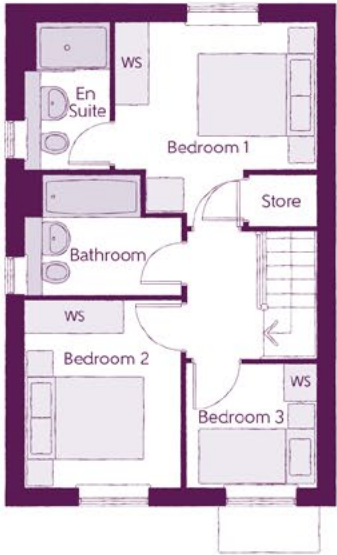
The Heather

3 BEDROOM HOME



Ground Floor

Kitchen/Dining	4.78m x 3.45m (max) (max)	15'8" x 11'4" (max) (max)
Living Room	3.68m x 5.14m (max) (max)	12'1" x 16'10" (max) (max)
Cloakroom	1.01m x 1.66m	3'4" x 5'5"



First Floor

Bedroom 1	3.29m x 3.34m (max)	10'10" x 11'0" (max)
Bedroom 1 En Suite	1.40m x 2.43m	4'7" x 8'0"
Bedroom 2	2.52m x 3.09m	8'3" x 10'2"
Bedroom 3	2.17m x 2.04m	7'1" x 6'8"
Bathroom	2.52m x 1.97m	8'3" x 6'5"

Clks - Cloakroom WS - Wardrobe Space (suggestion only, wardrobe not included) W - Fitted Wardrobe

Furniture arrangements are for illustrative purposes only. Items are not included, nor to scale.

The items shown in this key may be subject to change, and positions could vary from those indicated on this floorplan. Please refer to Sales Advisor for details of your selected plot. Computer generated image shown overleaf. External finishes, landscaping and configuration may vary from plot to plot. Please refer to Sales Advisor for further details. All dimensions are approximate and should not be used for carpet sizes, appliance spaces or furniture. We operate a policy of continuous improvement and individual features such as kitchen and bathroom layouts, doors, windows, garages and elevational treatments may vary from time to time. Consequently these particulars should be treated as general guidance only and do not constitute a contract, part of a contract or a warranty. LU/CB/500/S00/D/01/E.

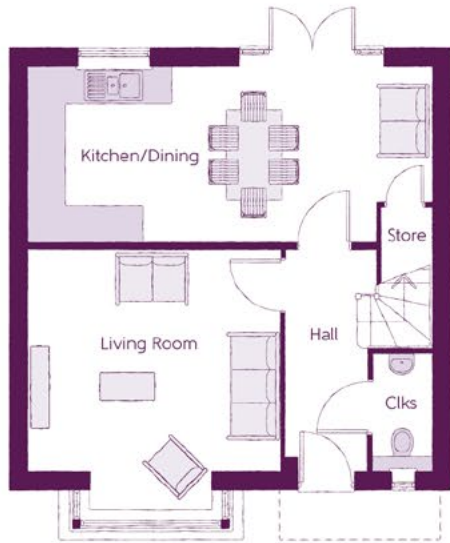


The Larkspur
3 BEDROOM HOME



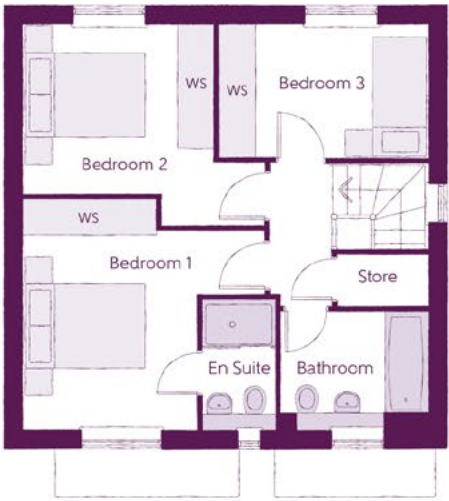
The Larkspur

3 BEDROOM HOME



Ground Floor

Kitchen/Dining	6.65m x 2.87m	21'10" x 9'5"
Living Room	4.16m x 4.30m (inc. bay)	13'8" x 14'1" (inc. bay)
Cloakroom	0.96m x 1.91m	3'2" x 6'3"



First Floor

Bedroom 1	3.96m x 3.78m (max) (max)	13'0" x 12'5" (max) (max)
Bedroom 1 En Suite	1.20m x 2.11m	3'11" x 6'11"
Bedroom 2	3.12m x 3.31m (max)	10'3" x 10'10" (max)
Bedroom 3	3.44m x 2.20m	11'3" x 7'3"
Bathroom	2.42m x 1.91m	7'11" x 6'3"

Clks - Cloakroom WS - Wardrobe Space (suggestion only, wardrobe not included) W - Fitted Wardrobe

Furniture arrangements are for illustrative purposes only. Items are not included, nor to scale.

The items shown in this key may be subject to change, and positions could vary from those indicated on this floorplan. Please refer to Sales Advisor for details of your selected plot. Computer generated image shown overleaf. External finishes, landscaping and configuration may vary from plot to plot. Please refer to Sales Advisor for further details. All dimensions are approximate and should not be used for carpet sizes, appliance spaces or furniture. We operate a policy of continuous improvement and individual features such as kitchen and bathroom layouts, doors, windows, garages and elevational treatments may vary from time to time. Consequently these particulars should be treated as general guidance only and do not constitute a contract, part of a contract or a warranty. LU/CB/500/S00/D/01/E.



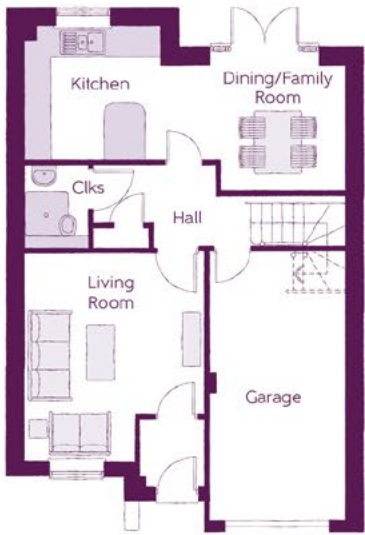
The Palomino

3 BEDROOM HOME



The Palomino

3 BEDROOM HOME



Ground Floor

Kitchen	3.165m x 3.079m	10'5" x 10'1"
Family/Dining Room	4.050m x 2.877m (max)	13'4" x 9'5" (max)
Living Room	4.641m x 3.992m (max)	15'3" x 13'1" (max)
Cloakroom	1.845m x 1.450m (max)	6'1" x 4'9" (max)
Garage	6.013m x 3.077m	19'9" x 10'1"



First Floor

Bedroom 1	3.852m x 3.207m	12'8" x 10'6"
Bedroom 1 En Suite	1.975m x 1.680m (max)	6'6" x 5'6" (max)
Bedroom 2	4.231m x 3.050m (max)	13'11" x 10'0" (max)
Bedroom 3	2.896m x 2.877m	9'6" x 9'5"
Bathroom	2.632m x 1.975m (max)	8'8" x 6'6" (max)

Clks - Cloakroom WS - Wardrobe Space (suggestion only, wardrobe not included) W - Fitted Wardrobe

Furniture arrangements are for illustrative purposes only. Items are not included, nor to scale.

The items shown in this key may be subject to change, and positions could vary from those indicated on this floorplan. Please refer to Sales Advisor for details of your selected plot. Computer generated image shown overleaf. External finishes, landscaping and configuration may vary from plot to plot. Please refer to Sales Advisor for further details. All dimensions are approximate and should not be used for carpet sizes, appliance spaces or furniture. We operate a policy of continuous improvement and individual features such as kitchen and bathroom layouts, doors, windows, garages and elevational treatments may vary from time to time. Consequently these particulars should be treated as general guidance only and do not constitute a contract, part of a contract or a warranty. LU/CB/500/S00/D/01/E.



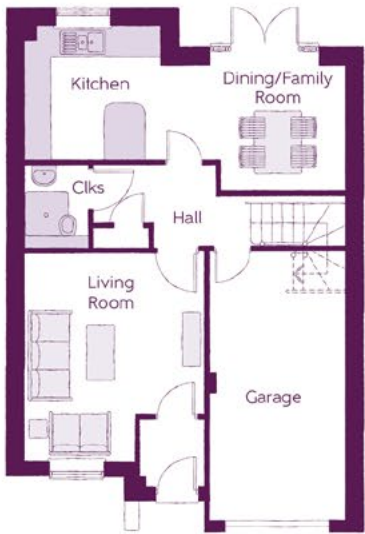
The Jasmine

4 BEDROOM HOME



The Jasmine

4 BEDROOM HOME



Ground Floor

Kitchen	3.20m x 3.33m	10'6" x 10'11"
Family/Dining	2.88m x 4.48m	9'6" x 14'8"
Living Room	3.54m x 4.94m (inc. bay)	11'7" x 16'3" (inc. bay)
Utility	1.84m x 1.71m	6'0" x 5'7"
Cloakroom	0.97m x 2.08m	3'2" x 6'10"



First Floor

Bedroom 1	2.96m x 4.59m (inc. bay)	9'9" x 15'1" (inc. bay)
Bedroom 1 En Suite	2.22m x 1.35m	7'4" x 4'5"
Bedroom 2	2.83m x 3.46m	9'3" x 11'4"
Bedroom 3	3.03m x 2.87m (max)	9'11" x 9'5" (max)
Bedroom 4	3.17m x 2.38m	10'5" x 7'10"
Bathroom	1.91m x 2.08m	6'3" x 6'10"

Clks - Cloakroom WS - Wardrobe Space (suggestion only, wardrobe not included) W - Fitted Wardrobe

Furniture arrangements are for illustrative purposes only. Items are not included, nor to scale.

The items shown in this key may be subject to change, and positions could vary from those indicated on this floorplan. Please refer to Sales Advisor for details of your selected plot. Computer generated image shown overleaf. External finishes, landscaping and configuration may vary from plot to plot. Please refer to Sales Advisor for further details. All dimensions are approximate and should not be used for carpet sizes, appliance spaces or furniture. We operate a policy of continuous improvement and individual features such as kitchen and bathroom layouts, doors, windows, garages and elevational treatments may vary from time to time. Consequently these particulars should be treated as general guidance only and do not constitute a contract, part of a contract or a warranty. LU/CB/500/S00/D/01/E.



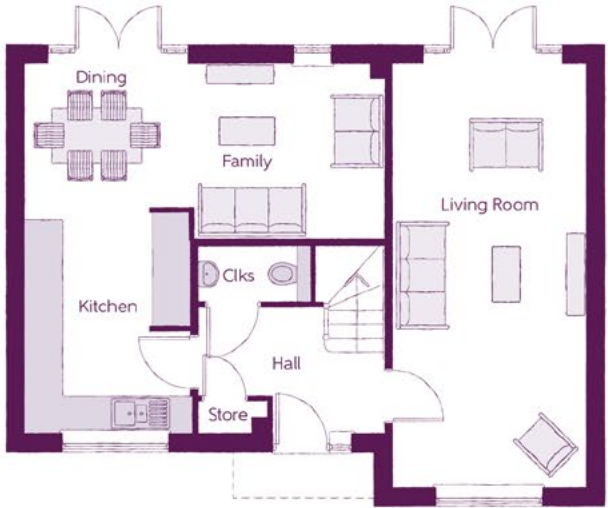
The Allium

4 BEDROOM HOME



The Allium

4 BEDROOM HOME



Ground Floor

Kitchen	2.70m x 3.72m	8'10" x 12'2"
Dining	2.78m x 2.37m	9'2" x 7'9"
Family	3.14m x 2.88m	10'4" x 9'5"
Living Room	3.16m x 6.99m	10'4" x 22'11"
Cloakroom	1.86m x 0.90m	6'1" x 3'0"



First Floor

Bedroom 1	3.16m x 4.35m (max)	10'4" x 14'3" (max)
Bedroom 1 En Suite	2.32m x 1.42m	7'7" x 4'8"
Bedroom 2	3.58m x 3.06m (max)	11'9" x 10'1" (max)
Bedroom 3	2.56m x 2.93m	8'5" x 9'8"
Bedroom 4	3.29m x 2.54m (max)	10'9" x 8'4" (max)
Bathroom	2.26m x 1.91m	7'5" x 6'3"

Clks - Cloakroom WS - Wardrobe Space (suggestion only, wardrobe not included) W - Fitted Wardrobe

Furniture arrangements are for illustrative purposes only. Items are not included, nor to scale.

The items shown in this key may be subject to change, and positions could vary from those indicated on this floorplan. Please refer to Sales Advisor for details of your selected plot. Computer generated image shown overleaf. External finishes, landscaping and configuration may vary from plot to plot. Please refer to Sales Advisor for further details. All dimensions are approximate and should not be used for carpet sizes, appliance spaces or furniture. We operate a policy of continuous improvement and individual features such as kitchen and bathroom layouts, doors, windows, garages and elevational treatments may vary from time to time. Consequently these particulars should be treated as general guidance only and do not constitute a contract, part of a contract or a warranty. LU/CB/500/S00/D/01/E.



The Gardenia

4 BEDROOM HOME



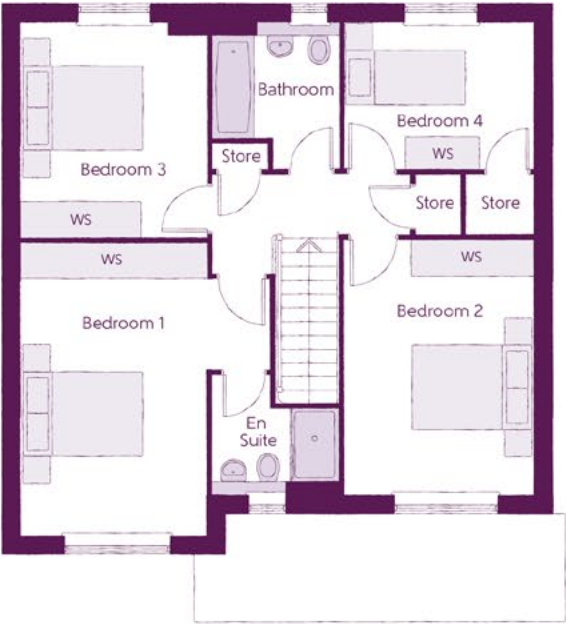
The Gardenia

4 BEDROOM HOME



Ground Floor

Kitchen/Dining	5.33m x 3.45m	17'6" x 11'4"
Family	3.12m x 3.11m	10'3" x 10'3"
Living Room	3.05m x 4.85m	10'0" x 15'11"
Cloakroom	0.90m x 1.63m	3'0" x 5'4"
Garage	3.05m x 6.05m	10'0" x 19'10"



First Floor

Bedroom 1	4.10m x 4.83m	13'5" x 15'10"
Bedroom 1 En Suite	2.10m x 1.95m	6'11" x 6'5"
Bedroom 2	3.12m x 4.21m	10'3" x 13'10"
Bedroom 3	3.05m x 3.53m	10'0" x 11'7"
Bedroom 4	3.16m x 2.40m	10'4" x 7'10"
Bathroom	2.07m x 2.40m	6'9" x 7'10"

Clks - Cloakroom WS - Wardrobe Space (suggestion only, wardrobe not included) W - Fitted Wardrobe

Furniture arrangements are for illustrative purposes only. Items are not included, nor to scale.

The items shown in this key may be subject to change, and positions could vary from those indicated on this floorplan. Please refer to Sales Advisor for details of your selected plot. Computer generated image shown overleaf. External finishes, landscaping and configuration may vary from plot to plot. Please refer to Sales Advisor for further details. All dimensions are approximate and should not be used for carpet sizes, appliance spaces or furniture. We operate a policy of continuous improvement and individual features such as kitchen and bathroom layouts, doors, windows, garages and elevational treatments may vary from time to time. Consequently these particulars should be treated as general guidance only and do not constitute a contract, part of a contract or a warranty. LU/CB/500/S00/D/01/E.



The Angelica

4 BEDROOM HOME



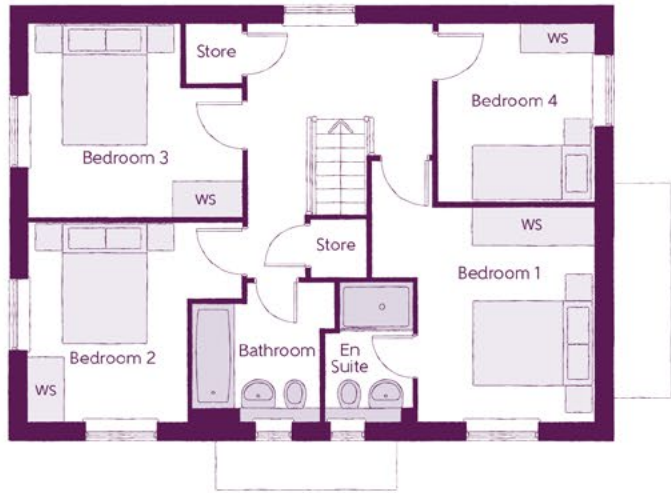
The Angelica

4 BEDROOM HOME



Ground Floor

Kitchen/Dining	4.39m x 6.54m (inc. bay)	14'5" x 21'5" (inc. bay)
Living Room	3.42m x 6.54m	11'3" x 21'5"
Utility	2.03m x 1.87m	6'8" x 6'2"
Cloakroom	1.00m x 1.65m	3'3" x 5'5"



First Floor

Bedroom 1	3.66m x 3.52m (max)	12'0" x 11'7" (max)
Bedroom 1 En Suite	1.44m x 2.25m	4'9" x 7'5"
Bedroom 2	3.53m x 3.27m (max)	11'7" x 10'9" (max)
Bedroom 3	3.53m x 3.18m (max)	11'7" x 10'5" (max)
Bedroom 4	2.58m x 2.93m	8'6" x 9'7"
Bathroom	2.35m x 2.25m (max)	7'9" x 7'5" (max)

Clks - Cloakroom WS - Wardrobe Space (suggestion only, wardrobe not included) W - Fitted Wardrobe

Furniture arrangements are for illustrative purposes only. Items are not included, nor to scale.

The items shown in this key may be subject to change, and positions could vary from those indicated on this floorplan. Please refer to Sales Advisor for details of your selected plot. Computer generated image shown overleaf. External finishes, landscaping and configuration may vary from plot to plot. Please refer to Sales Advisor for further details. All dimensions are approximate and should not be used for carpet sizes, appliance spaces or furniture. We operate a policy of continuous improvement and individual features such as kitchen and bathroom layouts, doors, windows, garages and elevational treatments may vary from time to time. Consequently these particulars should be treated as general guidance only and do not constitute a contract, part of a contract or a warranty. LU/CB/500/S00/D/01/E.



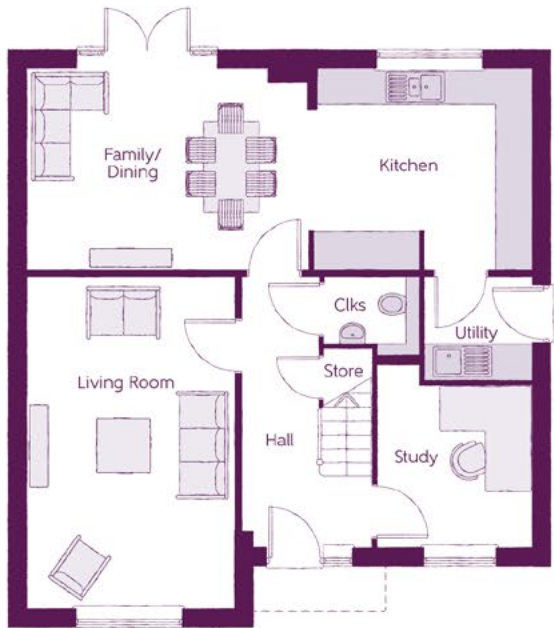
The Camellia

4 BEDROOM HOME



The Camellia

4 BEDROOM HOME



Ground Floor

Kitchen	3.71m x 3.30m	12'2" x 10'10"
Family/Dining	4.63m x 3.30m	15'2" x 10'10"
Living Room	3.39m x 5.45m	11'1" x 17'11"
Study	2.55m x 3.03m (max)	8'4" x 9'11" (max)
Utility	1.78m x 1.71m	5'10" x 5'7"
Cloakroom	1.57m x 1.32m (max)	5'2" x 4'4" (max)



First Floor

Bedroom 1	3.39m x 4.92m	11'1" x 16'2"
Bedroom 1 En Suite	2.23m x 2.27m (max)	7'4" x 7'5" (max)
Bedroom 2	3.39m x 3.89m	11'1" x 12'9"
Bedroom 3	2.55m x 5.03m (max)	8'4" x 16'6" (max)
Bedroom 4	2.75m x 2.76m	9'0" x 9'1"
Bathroom	2.02m x 2.76m (max)	6'8" x 9'1" (max)

Clks - Cloakroom WS - Wardrobe Space (suggestion only, wardrobe not included) W - Fitted Wardrobe

Furniture arrangements are for illustrative purposes only. Items are not included, nor to scale.

The items shown in this key may be subject to change, and positions could vary from those indicated on this floorplan. Please refer to Sales Advisor for details of your selected plot. Computer generated image shown overleaf. External finishes, landscaping and configuration may vary from plot to plot. Please refer to Sales Advisor for further details. All dimensions are approximate and should not be used for carpet sizes, appliance spaces or furniture. We operate a policy of continuous improvement and individual features such as kitchen and bathroom layouts, doors, windows, garages and elevational treatments may vary from time to time. Consequently these particulars should be treated as general guidance only and do not constitute a contract, part of a contract or a warranty. LU/CB/500/S00/D/01/E.



The Clydesdale

4 BEDROOM HOME



The Clydesdale

4 BEDROOM HOME



Ground Floor

Kitchen/Dining	5.612m x 3.275m	18'5" x 10'9"
Family Room	3.275m x 3.178m	10'9" x 10'5"
Living Room	4.560m x 3.503m	15'0" x 11'6"
Utility	1.508m x 1.505m	4'11" x 4'11"
Cloakroom	1.622m x 1.505m (max) (max)	5'4" x 4'11" (max) (max)
Garage	6.143m x 3.065m	20'2" x 10'1"



First Floor

Bedroom 1	5.539m x 4.517m (max) (max)	18'2" x 14'10" (max) (max)
Bedroom 1 En Suite	2.269m x 1.972m (max) (max)	7'5" x 6'6" (max) (max)
Bedroom 2	4.548m x 3.137m	14'11" x 10'4"
Bedroom 2 En Suite	1.946m x 1.542m (max) (max)	6'5" x 5'1" (max) (max)
Bedroom 3	3.951m x 3.332m (max) (max)	13'0" x 10'11" (max) (max)
Bedroom 4	3.312m x 3.132m (max) (max)	10'10" x 10'3" (max) (max)
Bathroom	2.148m x 1.866m (max) (max)	7'1" x 6'2" (max) (max)

Clks - Cloakroom WS - Wardrobe Space (suggestion only, wardrobe not included) W - Fitted Wardrobe

Furniture arrangements are for illustrative purposes only. Items are not included, nor to scale.

The items shown in this key may be subject to change, and positions could vary from those indicated on this floorplan. Please refer to Sales Advisor for details of your selected plot. Computer generated image shown overleaf. External finishes, landscaping and configuration may vary from plot to plot. Please refer to Sales Advisor for further details. All dimensions are approximate and should not be used for carpet sizes, appliance spaces or furniture. We operate a policy of continuous improvement and individual features such as kitchen and bathroom layouts, doors, windows, garages and elevational treatments may vary from time to time. Consequently these particulars should be treated as general guidance only and do not constitute a contract, part of a contract or a warranty. LU/CB/500/S00/D/01/E.

Specification

			2 Bedroom Homes	3 Bedroom Homes	4 Bedroom Homes
FINISHES	Entrance Doors	GRP Insulated Door	•	•	•
	Loft Hatch	Loft Hatch - Hinged Drop Down ** ††	•	•	•
	Ceilings	Crown White Matt Emulsion	•	•	•
	Walls	Crown White Matt Emulsion	•	•	•
	Floors	Concrete Ground Floor / Chipboard First Floor	•	•	•
	Window Cills	White Gloss MDF	•	•	•
	Stairs	Timber Stair - White Gloss MDF Strings	•	•	•
	Balusters	White Gloss Stop Chamfered Balusters	•	•	•
	Newel Posts	White Gloss Stop Chamfered Newels	•	•	•
	Newel Caps	White Gloss Flat Top Newel Caps	•	•	•
	Handrail	White Gloss Heavy Duty Handrail	•	•	•
	Skirting	White Gloss 94x14 MDF Grooved & Chamfered	•	•	•
	Architrave	White Gloss 120x14 MDF Grooved & Chamfered	•	•	•
	Internal Doors	White Pre Finished Ladder Internal Doors	•	•	•
KITCHEN	Ironmongery	Satin CSL192 Door Furniture	•	•	•
	Carcass	Premium Grade 18mm thk Colour Matched Carcass	•	•	•
	Frontals	Bellway Band B options ~~~	•	•	•
		Bellway Band C options ~~~	•	•	•
	Units	Frontal Matching Table Ends	•	•	•
		Unit Framing	•	•	•
	Worktops	40mm Square Edge Worktops with upstand	•	•	•
	Kitchen Sink	Rangemaster Aria Single Bowl SS Sink & Aquamono Tap (inc Sink Liner)	•	•	•
		Rangemaster Aria Bowl & Half SS Sink & Aquamono Tap (inc Sink Liner)	•	•	•
		Rangemaster Glendale Bowl & Half SS Sink & Aquamono Tap (inc Sink Liner)	•	•	•
		Rangemaster Aria Single Bowl SS Sink & Aquamono Tap (inc Sink Liner)	•	•	•
		Rangemaster Glendale Single Bowl SS Sink & Aquamono Tap (inc Sink Liner)	•	•	•
	Appliances Oven	Electrolux Single Oven KOFGH40TX	•	•	•
	Appliances Hob	Electrolux 4 Burner Gas Hob KGS6404X & SS Splashback	•	•	•
WET ROOMS		Electrolux 4 Burner Gas Hob KGS6436X & SS Splashback	•	•	•
	Appliances Extractor	Cooker Hood Extractor LFC316X	•	•	•
	Appliances Microwave	Electrolux Combination Microwave EVLDE46X	•	•	•
	Appliances Fridge Freezer	Fridge Freezer Space Only	•	•	•
		Zanussi 70/30 Fridge Freezer ZNFN18ES3	•	•	•
	Appliance Dishwasher	Removeable Unit (inc Feed & Waste) ‡	•	•	•
		Zanussi Dishwasher ZDLN152i	•	•	•
	Appliance Washing Machine	Washing Machine Space Only (inc Feed & Waste)	•	•	•
	Cloaks - WC	Roca DEBBA WC with Concealed Cistern & PL2 Flush Plate ^^	•	•	•
	Cloaks - Basin	Roca Wash Hand Basin †††	•	•	•
	Cloaks - Brassware	Bristan PISA Small Basin Chrome Mixer Tap	•	•	•
	Cloaks - Tiling	Band 2 Tiling to WC Boxing, Splashback Tiling to WHB, Flat Edge White Trim	•	•	•
		Band 3 Tiling to WC Boxing, Splashback Tiling to WHB, Flat Edge Chrome Trim	•	•	•
	Bathroom - WC	Roca DEBBA WC with Concealed Cistern & PL2 Flush Plate ^^	•	•	•
	Bathroom - Basin	Roca DEBBA 500 WHB with Full Pedestal ~	•	•	•
		Roca DEBBA 550 WHB with Semi Pedestal ~	•	•	•
	Bathroom - Bath	Roca OSLO Acrylic Bath & Rigid Bath Panel	•	•	•
	Bathroom - Brassware	Bristan PISA Chrome Bath & Basin Mixer Taps	•	•	•
		Bristan SAIL Chrome Bath & Basin Mixer Taps	•	•	•
	Bathroom - Shower Tray	Mira FLIGHT Low Shower Tray with Mira ELEVATE Enclosure †††	•	•	•
	Bathroom - Shower	Mira MINIMAL Single Thermostatic Shower ^^^	•	•	•
		Mira MINIMAL Single Thermostatic Shower ~~~~	•	•	•
	Bathroom - Tiling	1/2 Height Tiling (Band 2) to Wet Walls with Flat Edged White Trim *** †††	•	•	•
		1/2 Height Tiling (Band 3) to Wet Walls with Flat Edged Chrome Trim *** †††	•	•	•
	En-Suite - WC	Roca DEBBA WC with Concealed Cistern & PL2 Flush Plate ^^	•	•	•
	En-Suite - Basin	Roca DEBBA 450 WHB with Full Pedestal	•	•	•
		Roca DEBBA 550 WHB with Semi Pedestal	•	•	•

			2 Bedroom Homes	3 Bedroom Homes	4 Bedroom Homes
WET ROOMS	En-Suite - Brassware	Bristan PISA Chrome Bath & Basin Mixer Taps	•	•	•
		Bristan SAIL Chrome Bath & Basin Mixer Taps	•	•	•
	En-Suite - Shower Tray	Mira FLIGHT Low Shower Tray with Mira ELEVATE Enclosure †††	•	•	•
	En-Suite - Shower	Mira MINIMAL Single Thermostatic Shower ††	•	•	•
	En-Suite - Tiling	1/2 Height Tiling (Band 2) to Wet Walls with Flat Edged White Trim †††	•	•	•
		1/2 Height Tiling (Band 3) to Wet Walls with Flat Edged Chrome Trim †††	•	•	•
MECHANICAL	Waste Water Heat Recovery	Waste Water Heat Recovery System †††	•	•	•
	Boiler	Ideal LOGIC Combination Boiler (Cb) ^	•	•	•
	Controls	Google Nest 3RD Gen Dual Zone Learning Thermostat	•	•	•
	Radiators	Stelrad Compact Steel Panel Radiators with Grilles	•	•	•
	Towel Warmers	Flat Chrome to Bathroom	•	•	•
ELECTRICS	Ventilation	Mechanical Extract Fans (system 3)	•	•	•
	Home Working	Dedicated Power, USB & Data points	•	•	•
	PV/Generation Optimiser	Marlec Solar iBoost †††	•	•	•
	Safety - Heat	Heat Detector DET &	•	•	•
	Safety - Fire	Optical Smoke Detectors LD2 D2 DET	•	•	•
	Safety - Carbon	Fireblitz FHC0-BH Carbon Monoxide Detector	•	•	•
	Consumer Unit	Wylex Consumer Unit	•	•	•
	Sockets & Switches	Electrum CASA White Fittings	•	•	•
	USB Locations	Kitchen, Living Room & Bedroom 1 ONLY	•	•	•
	Shaver / Toothbrush Point	Bathroom ONLY	•	•	•
	Lighting	Pendant Fitting to Habitable Rooms	•	•	•
	Lighting - Kitchen	White Recessed Spot Lights	•	•	•
		Polished Chrome Recessed Spot Lights	•	•	•
	Lighting - Bathroom & En-Suites	White Recessed Spot Lights	•	•	•
		Polished Chrome Recessed Spot Lights	•	•	•
EXTERNALS & MISC	Lighting - External	External Light Clifton Brushed Steel Up/Down (Front & Rear)	•	•	•
	Communications - TV	TV Point to Living Room, Family, Bedroom 1 & Study	•	•	•
	Communications - Voice	Telephone Point to Living Room	•	•	•
	Communications - Data	Cat 6 Network Point to Living Room, Family, Bedroom 1 & Study	•	•	•
	Communications - Satellite	Dual Connection Satellite Points to Living Room	•	•	•
	Broadband	Ultrafast Fibre Connectivity Openreach	•	•	•
	Build Method	Masonry ##	•	•	•
	Ecological	Hedgehog Highway fencing adaption	•	•	•
	Garages Electric	Light & Power Point to incurtilage Garages ##	•	•	•
	Maintenance	External Tap	•	•	•
	Number Plaque	Ashberry Number Plaque	•	•	•
	Footpath & Patio	Grey PCC Flags 450x450x32's	•	•	•
	Garages	Steel Panel Up & Over Canopy Garage Door ##	•	•	•
	Drives	Bitmac Black #	•	•	•
	Landscaping - Front	Medallion Turf & Landscape Planting ###	•	•	•
	Landscaping - Rear	Rotovated Topsoil ###	•	•	•
	Renewables	Photovoltaic Array ##	•	•	•
	EV Charging Terminal	Pod Point 7kw Solo Universal * †	•	•	•

* electrical infrastructure upgrade maybe required
** fire rated as necessary
*** full height around bath where shower provided as standard
† mounting position is plot specific, refer to site layout
†† where layout allows
††† full height to shower enclosure
‡ at build stage
‡‡ flow regulator fitted to bath mixer if serving single thermostatic shower & fed via combination boiler
††† housetype dependent - liaise with sales executive
^ housetype dependent on particular 4 bed housetypes - liaise with Sales Advisor
^^ inc soft close mechanism seat on 4 & 5 Bedroom Homes ONLY



It's the start of something new

Welcome to Ashberry Homes, a developer of homes built to exceptional standards in carefully chosen locations, where we place individuality and excellence at the heart of house-building.

At Ashberry Homes, we believe that in order to create homes that are loved, they must be built with expertise, confidence and the utmost care.

Our team of skilled craftsmen work to the highest of standards, making sure that your needs are always the inspiration behind our designs.

What's more, our Personal Touch selection of optional finishes and upgrades allows you to make your new home as unique as you are. This pride in our workmanship extends to the environment, with sustainable features built into every Ashberry home - helping to preserve precious natural resources and ensuring lower energy running costs for you.



“ The staff at Ashberry Homes have been so helpful throughout my journey. Moving home can be a stressful time, and they really helped to keep me informed. They are exceptional.

Jonathan
Cherry Fields



“ I would recommend buying with Ashberry Homes, as they went above and beyond to ensure the quality of build and service beat our expectations.

Matt and Katya
The Limes

From the moment you visit our sales centre to the second you step into your new Ashberry home, we will be there to offer our guidance and expertise.

Our friendly and professional team will help ensure that your home-buying journey is as straightforward as possible, supporting you through each decision you make. Plus, once you move in, we will still be there if you need us, providing a comprehensive programme of aftercare that you can rely on.

Ashberry Homes abides by The Consumer Code, which is an independent industry code developed to make the home-buying process fairer and more transparent for purchasers.





Here for you at every step

At Ashberry Homes, we know that buying and selling a home is a time when you need support and guidance, which is why we're here to help.

We strive to give all our customers an enjoyable home-buying experience and help make your dream home a reality by being here for you every step of the way.

Our expert team will be by your side to advise and guide you from the moment you first visit us right through to the completion of your purchase. We'll also be available on moving day to welcome you into your new home, helping to ensure your move goes smoothly. We don't just stop when you have the keys either. Should you need us, our customer care team will be on hand to help with any queries, no matter how small.



Love your home, not somebody else's

All of our homes are equipped with superior fixtures and fittings, which perfectly complements our focus on design and attention to detail.

Expertly crafted using state-of-the-art materials, your brand new home is finished to a high standard so you can start enjoying it the moment you get your keys.



“ We would recommend Ashberry Homes to others as they build a strong standard of homes. The aftercare was very good to make sure we had settled in.

Amber and Darren
Elizabeth Gardens

It's the little things that make a house your home

Our Personal Touch selection of optional finishes and fittings puts all the decisions in your hands.

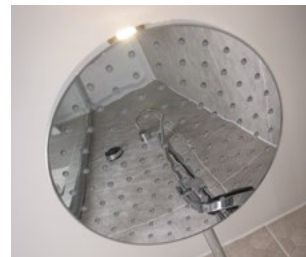
From upgrading our standard fittings to adding additional items, you can make your new home as individual as you are.

Most importantly, we will ensure that your chosen features are expertly fitted and finished, ready for your move-in day.

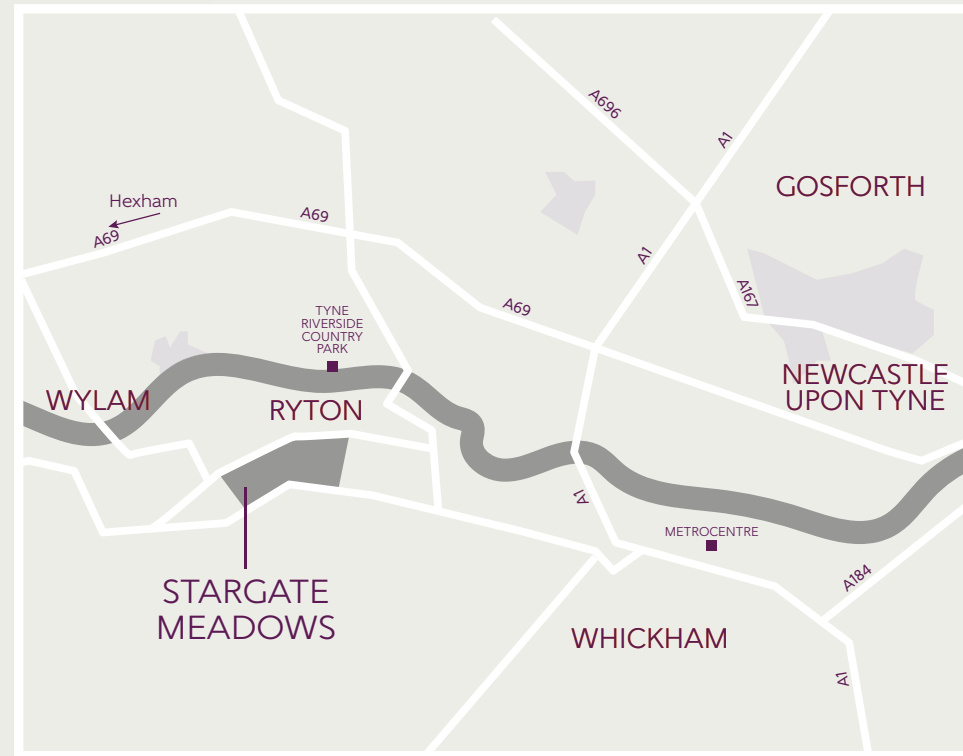


“ We fell in love with our home the moment we saw it. It was our dream home, right down to the white picket fence outside our front garden.

Wyon and Tasnova
Victoria Gardens



How to find us



Ashberry Homes abides by the New Homes Quality Code (NHQC), an independent industry code established to champion quality new homes and deliver better outcomes for customers.

Ashberry
Homes

