



Autumn Ford

Autumn Ford is a development of 3 and 4 bedroom homes and 2 bedroom apartments, located in Benton, Newcastle upon Tyne.



THE
ARTISAN
COLLECTION

Bellway



Find your perfect place

Live within reach of the bustling city and the beautiful coast

Autumn Ford is an attractive collection of 2, 3 and 4 bedroom homes a short drive from the buzz of Newcastle city centre and the golden sands of Whitley Bay. This varied development offers a versatile selection of properties, featuring thoughtfully designed interiors that maximise both efficiency and comfort, along with parking or garages

for complete convenience. The same variety is reflected in the location, which puts a wide range of amenities on your doorstep, along with excellent travel connections to the city and beyond. Such a combination creates the ideal base for first-time buyers, flourishing families and commuting professionals alike.

Have it all on your doorstep

A wide range of amenities to suit a variety of lifestyles

Autumn Ford's location in Benton puts all the essentials just minutes away. A 15-minute walk west will take you to the nearby high street where you can find a convenience store, post office, bank, surgery and pharmacy, along with various pubs and eateries.

A similar distance east, there is a retail park that plays home to a supermarket, a number of national chain stores and a choice of kids' activity centres. Add to this nursery, primary and secondary schools within eight minutes by car and you have a location that caters for most.

If you're looking for more choice, Newcastle City Centre is just 14 minutes away by road and provides a huge range of shopping, leisure, entertainment and nightlife to enjoy. Furthermore, Newcastle Racecourse is an 11-minute drive away and makes a thrilling day out.

Sports fans will also love the excellent selection of facilities nearby. The Blue Flames Sporting Club is a stone's throw from Autumn Ford and offers courts, pitches, fitness classes and a fully equipped gym. Longbenton Sports Ground and Coach Lane Sports Centre are also within walking distance, featuring a wide range of facilities including a swimming pool.

There is also some fantastic parkland within easy reach of the development. Benton Quarry Park's woodland walks and open space is just over the road, while The Rising Sun Countryside Centre is a nine-minute bike ride away, and comprises 162 acres of ponds, woodlands and grasslands in which to lose yourself.

If you really want to get away from it all, Autumn Ford also puts the rugged North Sea coast a short drive away. The golden sands, award-winning ice cream and fresh sea air of Whitley Bay is all within eight minutes and provides the perfect escape.

Transport connections to and from Benton make travelling further afield easy. There is a bus stop within walking distance that provides regular services into the city centre, while the A1508, A19 and A1 provide solid road links to surrounding towns and cities.

Alternatively, Benton Metro Station is a three-minute bike ride away and takes you to Newcastle International Airport for trips abroad or Newcastle Central Station where you can easily connect to Edinburgh, London and Manchester by rail.





Development plan



The site plan is drawn to show the relative position of individual properties. NOT TO SCALE. This is a two dimensional drawing and will not show land contours and gradients, boundary treatments, landscaping or local authority street lighting. Footpaths subject to change. For details of individual properties and availability please refer to our Sales Advisor.



The Chandler

THREE BEDROOM HOME



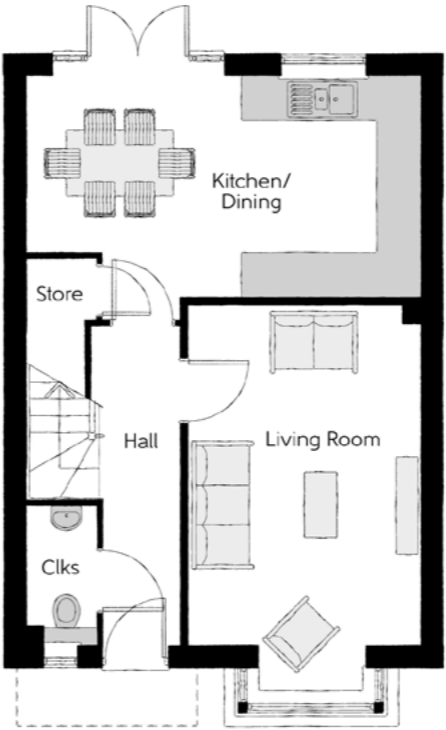
Bellway

The Chandler

Three bedroom home



First Floor		
Bedroom 1	3.40m x 3.02m	11'2" x 9'11"
Bedroom 1 En Suite	2.45m x 1.20m	8'0" x 3'11"
Bedroom 2	3.50m x 3.40m (max)	11'6" x 11'2" (max)
Bedroom 3	3.04m x 2.47m	10'0" x 8'1"
Bathroom	1.97m x 1.96m	6'5" x 6'5"



Ground Floor		
Kitchen/Dining	5.46m x 3.05m	17'11" x 10'0"
Living Room	5.36m x 3.22m (inc. bay)	17'7" x 10'7" (inc. bay)
Cloakroom	1.90m x 0.95m	6'3" x 3'1"

Clks - Cloakroom WS - Wardrobe Space (suggestion only, wardrobe not included)

Furniture arrangements are for illustrative purposes only. Items are not included, nor to scale.

The items shown in this key may be subject to change, and positions could vary from those indicated on this floorplan. Please refer to Sales Advisor for details of your selected plot. Computer generated image shown overleaf. External finishes, landscaping and configuration may vary from plot to plot. Please refer to Sales Advisor for further details. All dimensions are approximate and should not be used for carpet sizes, appliance spaces or furniture. We operate a policy of continuous improvement and individual features such as kitchen and bathroom layouts, doors, windows, garages and elevational treatments may vary from time to time. Consequently these particulars should be treated as general guidance only and do not constitute a contract, part of a contract or a warranty. AR/CB/500/S00/D/01/A.



The Sawyer

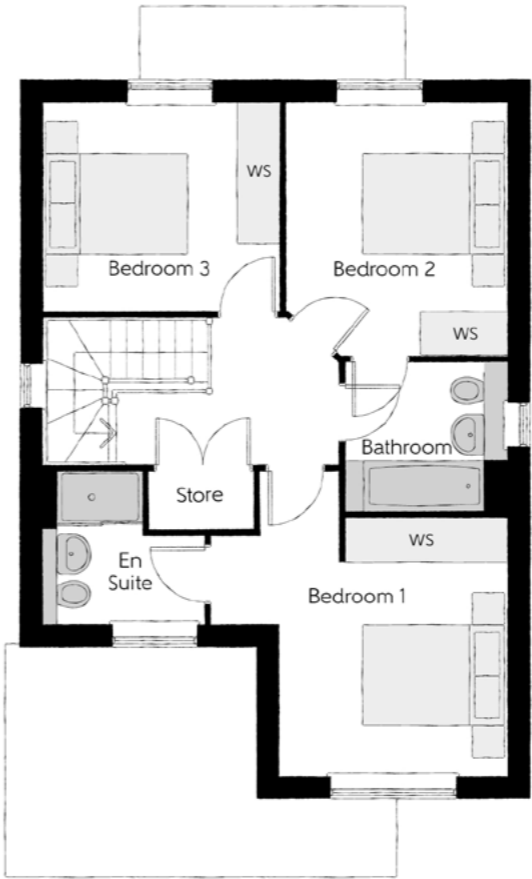
THREE BEDROOM HOME



Bellway

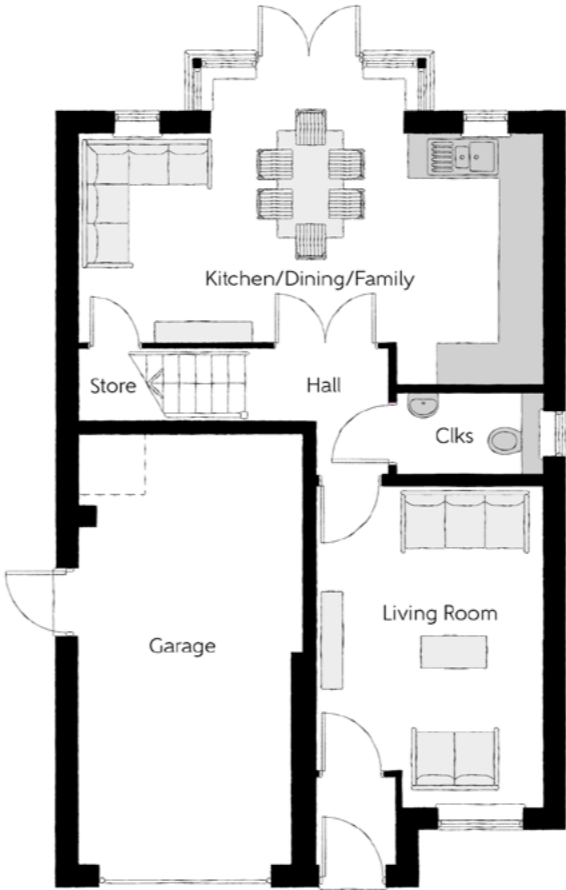
The Sawyer

Three bedroom home



First Floor

Bedroom 1	4.09m x 4.23m (max) (max)	13'5" x 13'11" (max) (max)
Bedroom 1 En Suite	2.25m x 2.10m (max) (max)	7'4" x 6'11" (max) (max)
Bedroom 2	3.04m x 3.54m	10'0" x 11'7"
Bedroom 3	3.30m x 2.91m	10'10" x 9'7"
Bathroom	2.20m x 2.04m	7'3" x 6'8"



Ground Floor

Kitchen/Dining/Family	6.42m x 3.51m (max)	21'1" x 11'6" (max)
Living Room	3.16m x 4.45m	10'4" x 14'7"
Cloakroom	2.05m x 1.15m	6'9" x 3'9"
Garage	3.10m x 6.09m (max)	10'2" x 20'0" (max)

Clks - Cloakroom WS - Wardrobe Space (suggestion only, wardrobe not included)

Furniture arrangements are for illustrative purposes only. Items are not included, nor to scale.
The items shown in this key may be subject to change, and positions could vary from those indicated on this floorplan. Please refer to Sales Advisor for details of your selected plot. Computer generated image shown overleaf. External finishes, landscaping and configuration may vary from plot to plot. Please refer to Sales Advisor for further details. All dimensions are approximate and should not be used for carpet sizes, appliance spaces or furniture. We operate a policy of continuous improvement and individual features such as kitchen and bathroom layouts, doors, windows, garages and elevational treatments may vary from time to time. Consequently these particulars should be treated as general guidance only and do not constitute a contract, part of a contract or a warranty. AR/CB/500/S00/D/01/A.



The Blemmere

THREE BEDROOM HOME



Bellway

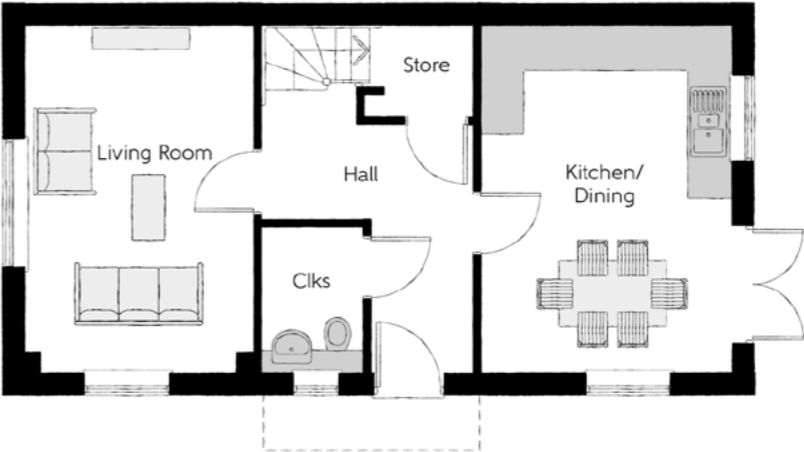
The Blemmere

Three bedroom home



First Floor

Bedroom 1	3.99m x 3.50m (max)	13'1" x 11'6" (max)
Bedroom 1 En Suite	2.83m x 1.20m	9'3" x 3'11"
Bedroom 2	4.59m x 2.55m	15'1" x 8'4"
Bedroom 3	3.49m x 2.15m	11'6" x 7'1"
Bathroom	2.20m x 1.98m	7'3" x 6'6"



Ground Floor

Kitchen/Dining	4.79m x 3.49m	15'9" x 11'6"
Living Room	4.79m x 3.16m	15'9" x 10'4"
Cloakroom	1.94m x 1.40m	6'4" x 4'7"

Clks - Cloakroom WS - Wardrobe Space (suggestion only, wardrobe not included)

Furniture arrangements are for illustrative purposes only. Items are not included, nor to scale.

The items shown in this key may be subject to change, and positions could vary from those indicated on this floorplan. Please refer to Sales Advisor for details of your selected plot. Computer generated image shown overleaf. External finishes, landscaping and configuration may vary from plot to plot. Please refer to Sales Advisor for further details. All dimensions are approximate and should not be used for carpet sizes, appliance spaces or furniture. We operate a policy of continuous improvement and individual features such as kitchen and bathroom layouts, doors, windows, garages and elevational treatments may vary from time to time. Consequently these particulars should be treated as general guidance only and do not constitute a contract, part of a contract or a warranty. AR/CB/500/S00/D/01/A.



The Harper

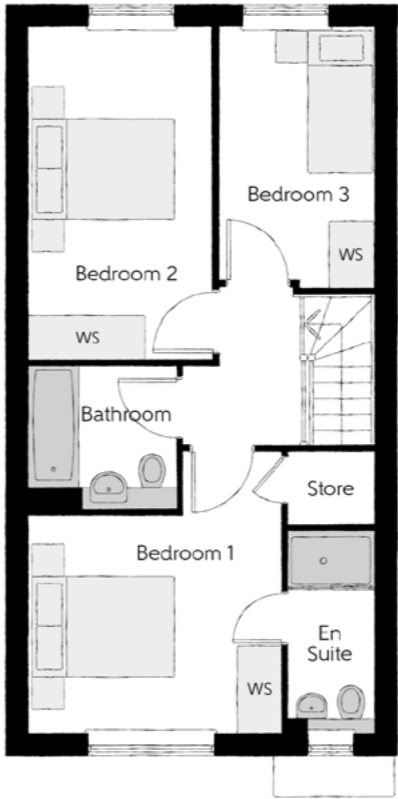
THREE BEDROOM HOME



Bellway

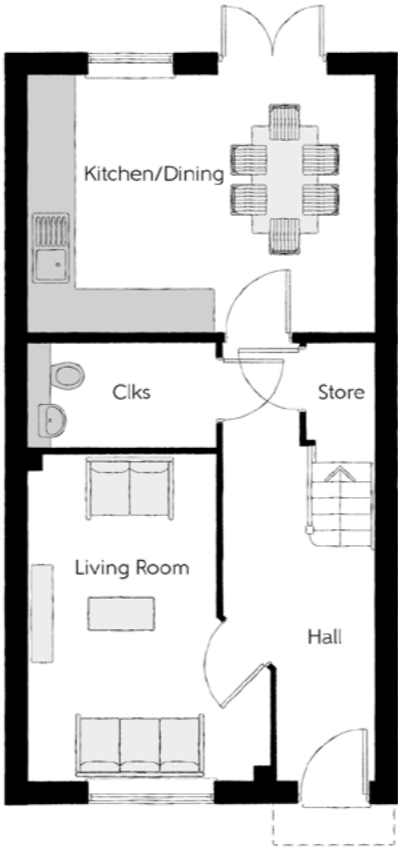
The Harper

Three bedroom home



First Floor

Bedroom 1	3.50m x 3.92m (max)	11'6" x 12'10" (max)
Bedroom 1 En Suite	1.20m x 2.82m	3'11" x 9'3"
Bedroom 2	2.55m x 4.62m	8'4" x 15'2"
Bedroom 3	2.15m x 3.61m	7'1" x 11'10"
Bathroom	2.06m x 1.99m	6'9" x 6'6"



Ground Floor

Kitchen/Dining	4.79m x 3.55m	15'9" x 11'8"
Living Room	3.36m x 4.55m (max)	11'0" x 14'11" (max)
Cloakroom	2.61m x 1.46m	8'7" x 4'10"

Ciks - Cloakroom WS - Wardrobe Space (suggestion only, wardrobe not included)

Furniture arrangements are for illustrative purposes only. Items are not included, nor to scale.

The items shown in this key may be subject to change, and positions could vary from those indicated on this floorplan. Please refer to Sales Advisor for details of your selected plot. Computer generated image shown overleaf. External finishes, landscaping and configuration may vary from plot to plot. Please refer to Sales Advisor for further details. All dimensions are approximate and should not be used for carpet sizes, appliance spaces or furniture. We operate a policy of continuous improvement and individual features such as kitchen and bathroom layouts, doors, windows, garages and elevational treatments may vary from time to time. Consequently these particulars should be treated as general guidance only and do not constitute a contract, part of a contract or a warranty. AR/CB/500/S00/D/01/A.



The Cutler

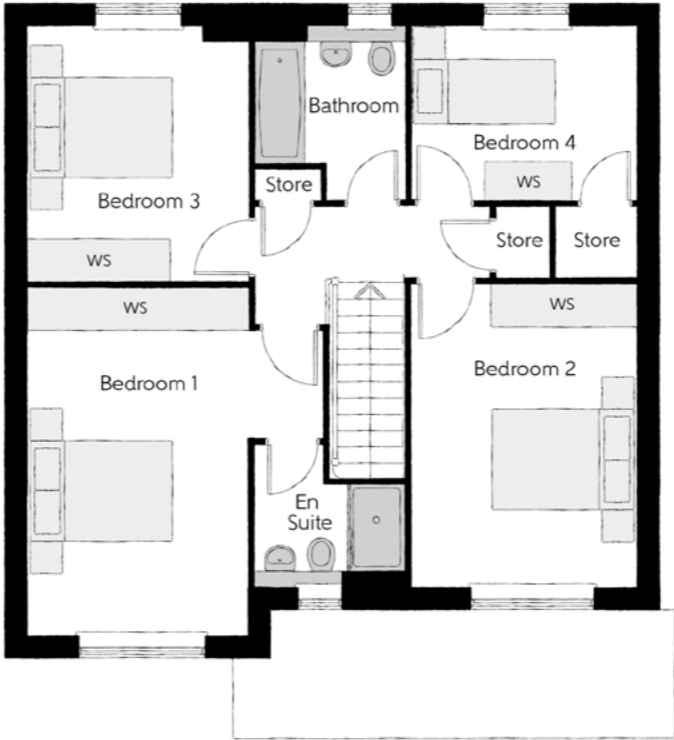
FOUR BEDROOM HOME



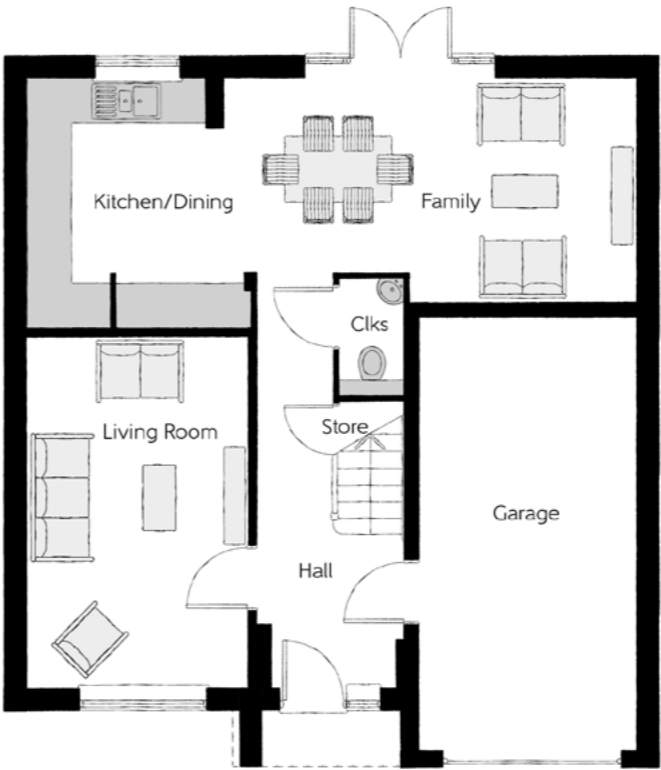
Bellway

The Cutler

Four bedroom home



First Floor		
Bedroom 1	4.10m x 4.83m	13'5" x 15'10"
Bedroom 1 En Suite	2.10m x 1.95m	6'11" x 6'5"
Bedroom 2	3.12m x 4.21m	10'3" x 13'10"
Bedroom 3	3.05m x 3.53m	10'0" x 11'7"
Bedroom 4	3.16m x 2.40m	10'4" x 7'10"
Bathroom	2.07m x 2.40m	6'9" x 7'10"



Ground Floor		
Kitchen/Dining	5.33m x 3.45m	17'6" x 11'4"
Family	3.12m x 3.11m	10'3" x 10'3"
Living Room	3.05m x 4.85m	10'0" x 15'11"
Cloakroom	0.90m x 1.63m	3'0" x 5'4"
Garage	3.05m x 6.05m	10'0" x 19'10"

Clks - Cloakroom WS - Wardrobe Space (suggestion only, wardrobe not included)

Furniture arrangements are for illustrative purposes only. Items are not included, nor to scale.
The items shown in this key may be subject to change, and positions could vary from those indicated on this floorplan. Please refer to Sales Advisor for details of your selected plot. Computer generated image shown overleaf. External finishes, landscaping and configuration may vary from plot to plot. Please refer to Sales Advisor for further details. All dimensions are approximate and should not be used for carpet sizes, appliance spaces or furniture. We operate a policy of continuous improvement and individual features such as kitchen and bathroom layouts, doors, windows, garages and elevational treatments may vary from time to time. Consequently these particulars should be treated as general guidance only and do not constitute a contract, part of a contract or a warranty. AR/CB/500/S00/D/01/A.



The Bowyer

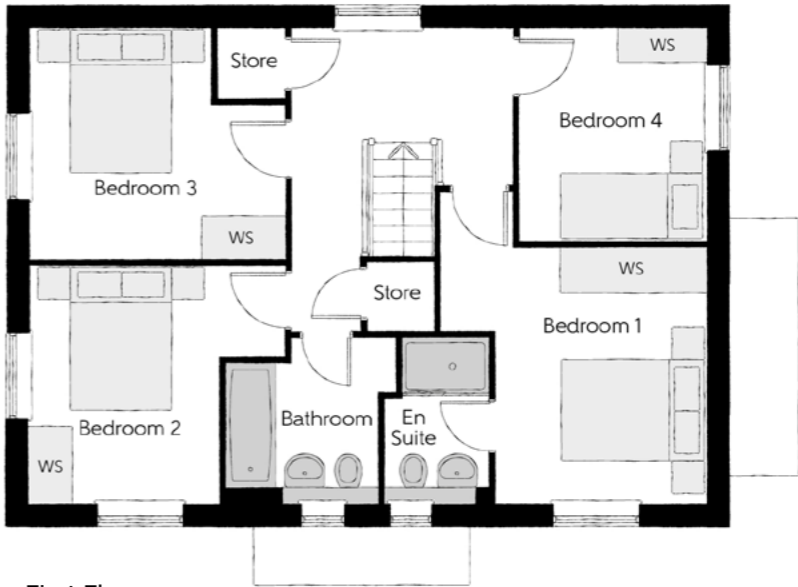
FOUR BEDROOM HOME



Bellway

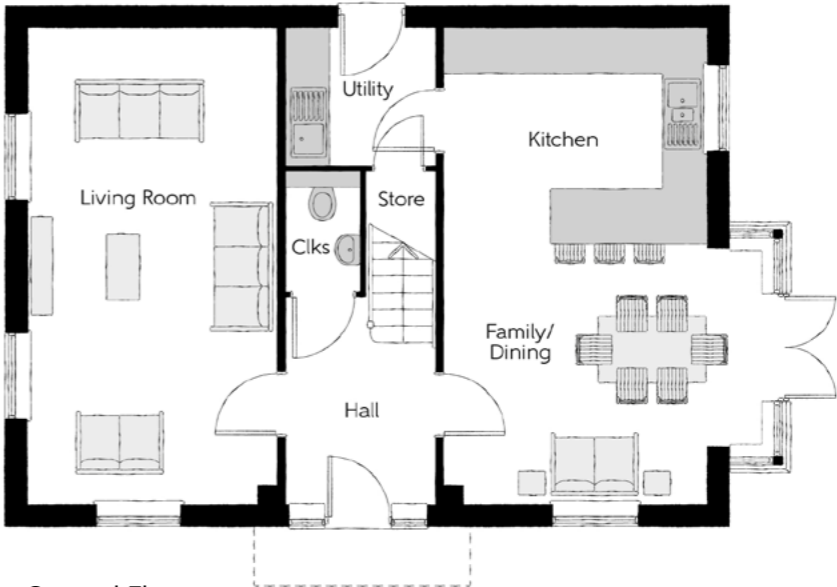
The Bowyer

Four bedroom home



First Floor

Bedroom 1	3.66m x 3.52m (max) (max)	12'0" x 11'7" (max) (max)
Bedroom 1 En Suite	1.44m x 2.25m	4'9" x 7'5"
Bedroom 2	3.53m x 3.27m (max)	11'7" x 10'9" (max)
Bedroom 3	3.53m x 3.18m (max)	11'7" x 10'5" (max)
Bedroom 4	2.58m x 2.93m	8'6" x 9'7"
Bathroom	2.35m x 2.25m (max)	7'9" x 7'5" (max)



Ground Floor

Kitchen/Dining (inc. bay)	4.39m x 6.54m	14'5" x 21'5" (inc. bay)
Living Room	3.42m x 6.54m	11'3" x 21'5"
Utility	2.03m x 1.87m	6'8" x 6'2"
Cloakroom	1.00m x 1.65m	3'3" x 5'5"

Clks - Cloakroom WS - Wardrobe Space (suggestion only, wardrobe not included)

Furniture arrangements are for illustrative purposes only. Items are not included, nor to scale.

The items shown in this key may be subject to change, and positions could vary from those indicated on this floorplan. Please refer to Sales Advisor for details of your selected plot. Computer generated image shown overleaf. External finishes, landscaping and configuration may vary from plot to plot. Please refer to Sales Advisor for further details. All dimensions are approximate and should not be used for carpet sizes, appliance spaces or furniture. We operate a policy of continuous improvement and individual features such as kitchen and bathroom layouts, doors, windows, garages and elevational treatments may vary from time to time. Consequently these particulars should be treated as general guidance only and do not constitute a contract, part of a contract or a warranty. AR/CB/500/S00/D/01/A.



The Reedmaker

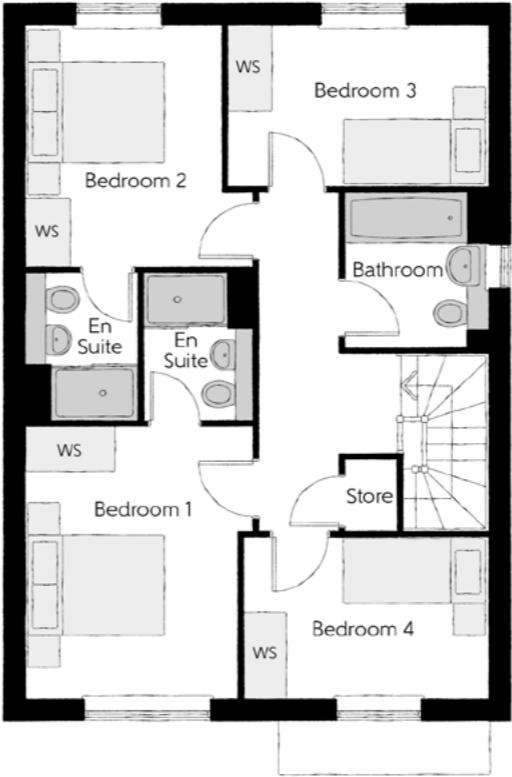
FOUR BEDROOM HOME



Bellway

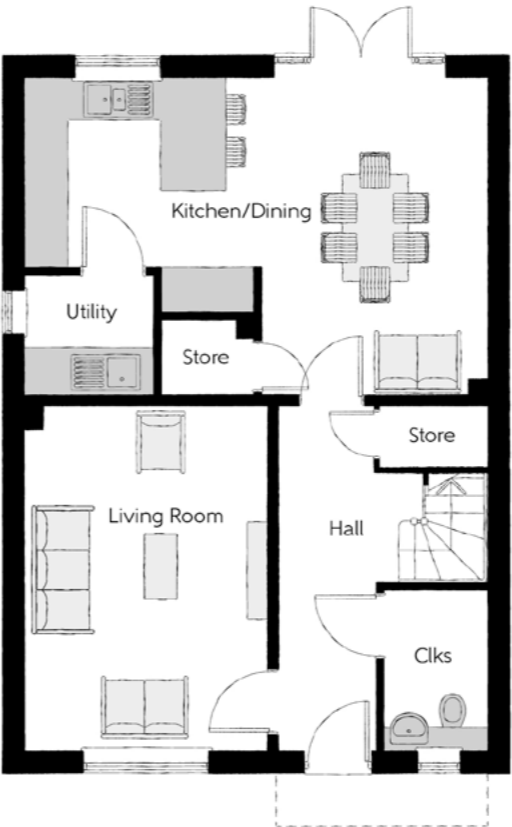
The Reedmaker

Four bedroom home



First Floor

Bedroom 1	3.19m x 3.78m (max)	10'5" x 12'5" (max)
Bedroom 1 En Suite	1.56m x 2.05m	5'1" x 6'9"
Bedroom 2	2.73m x 3.35m	9'0" x 11'0"
Bedroom 2 En Suite	1.54m x 2.05m	5'1" x 6'9"
Bedroom 3	3.60m x 2.25m	11'10" x 7'4"
Bedroom 4	3.40m x 2.22m	11'2" x 7'4"
Bathroom	1.98m x 2.15m	6'6" x 7'1"



Ground Floor

Kitchen/Dining	6.42m x 4.42m (max)	21'1" x 14'6" (max)
Living Room	3.39m x 4.77m	11'1" x 15'8"
Utility	1.78m x 1.61m	5'10" x 5'3"
Cloakroom	1.46m x 2.22m	4'10" x 7'4"

Clks - Cloakroom WS - Wardrobe Space (suggestion only, wardrobe not included)

Furniture arrangements are for illustrative purposes only. Items are not included, nor to scale.

The items shown in this key may be subject to change, and positions could vary from those indicated on this floorplan. Please refer to Sales Advisor for details of your selected plot. Computer generated image shown overleaf. External finishes, landscaping and configuration may vary from plot to plot. Please refer to Sales Advisor for further details. All dimensions are approximate and should not be used for carpet sizes, appliance spaces or furniture. We operate a policy of continuous improvement and individual features such as kitchen and bathroom layouts, doors, windows, garages and elevational treatments may vary from time to time. Consequently these particulars should be treated as general guidance only and do not constitute a contract, part of a contract or a warranty. AR/CB/500/S00/D/01/A.



The Lorimer

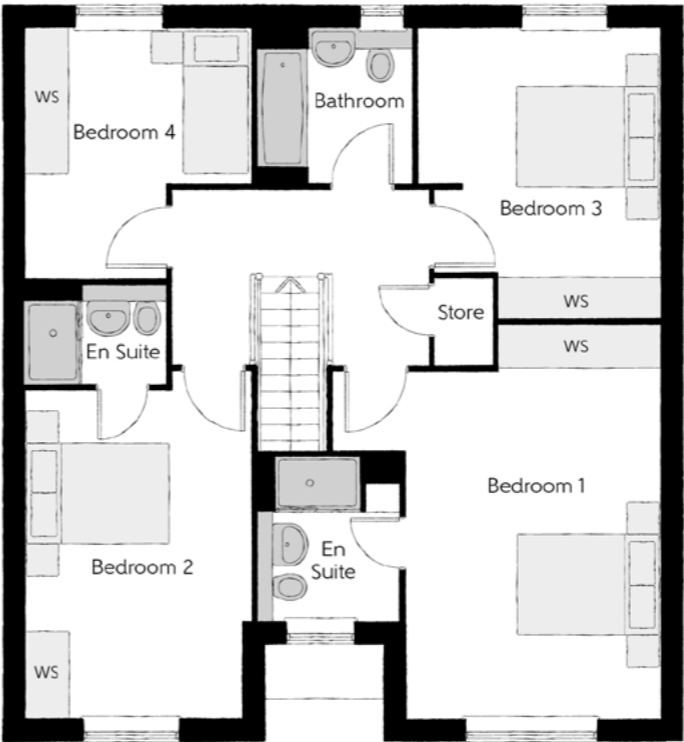
FOUR BEDROOM HOME



Bellway

The Lorimer

Four bedroom home



First Floor		
Bedroom 1	4.52m x 5.46m <small>(max) (max)</small>	14'10" x 17'11" <small>(max) (max)</small>
Bedroom 1 En Suite	1.97m x 2.26m	6'6" x 7'5"
Bedroom 2	3.14m x 4.52m <small>(max) (max)</small>	10'4" x 14'10" <small>(max) (max)</small>
Bedroom 2 En Suite	1.99m x 1.41m	6'6" x 4'8"
Bedroom 3	3.33m x 4.02m <small>(max) (max)</small>	10'11" x 13'2" <small>(max) (max)</small>
Bedroom 4	3.12m x 3.46m <small>(max) (max)</small>	10'3" x 11'4" <small>(max) (max)</small>
Bathroom	2.15m x 2.16m	7'1" x 7'1"



Ground Floor		
Kitchen/Dining	5.16m x 3.28m <small>(max)</small>	16'11" x 10'9" <small>(max)</small>
Family	3.63m x 3.28m	11'11" x 10'9"
Living Room	3.50m x 4.38m	11'6" x 14'5"
Utility	1.91m x 2.04m	6'3" x 6'8"
Cloakroom	1.50m x 2.04m	4'11" x 6'8"
Garage	3.07m x 6.11m	10'1" x 20'1"

Clks - Cloakroom WS - Wardrobe Space (suggestion only, wardrobe not included)

Furniture arrangements are for illustrative purposes only. Items are not included, nor to scale.
The items shown in this key may be subject to change, and positions could vary from those indicated on this floorplan. Please refer to Sales Advisor for details of your selected plot. Computer generated image shown overleaf. External finishes, landscaping and configuration may vary from plot to plot. Please refer to Sales Advisor for further details. All dimensions are approximate and should not be used for carpet sizes, appliance spaces or furniture. We operate a policy of continuous improvement and individual features such as kitchen and bathroom layouts, doors, windows, garages and elevational treatments may vary from time to time. Consequently these particulars should be treated as general guidance only and do not constitute a contract, part of a contract or a warranty. AR/CB/500/S00/D/01/A.



Moore Court

ONE AND TWO BEDROOM APARTMENTS



Bellway



The Lewis – Plots 46*, 52* & 58*

Kitchen/Living/Dining	2.89m x 8.48m	9'6" x 27'10"
Bedroom 1	2.83m x 4.30m	9'3" x 14'1"
Bedroom 1 En Suite	1.65m x 2.20m	5'5" x 7'3"
Bedroom 2	2.67m x 4.62m	8'9" x 15'2"
Bathroom	2.20m x 2.05m	7'3" x 6'9"
Total area	70.70 sq. m.	761 sq. ft.

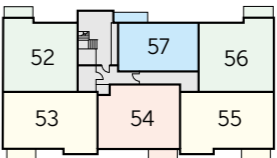


The Lewis – Plots 50*, 56 & 62

Kitchen/Living/Dining	2.89m x 8.48m	9'6" x 27'10"
Bedroom 1	2.83m x 4.30m	9'3" x 14'1"
Bedroom 1 En Suite	1.65m x 2.20m	5'5" x 7'3"
Bedroom 2	2.67m x 4.62m	8'9" x 15'2"
Bathroom	2.20m x 2.05m	7'3" x 6'9"
Total area	70.70 sq. m.	761 sq. ft.



Ground Floor



First Floor



Second Floor

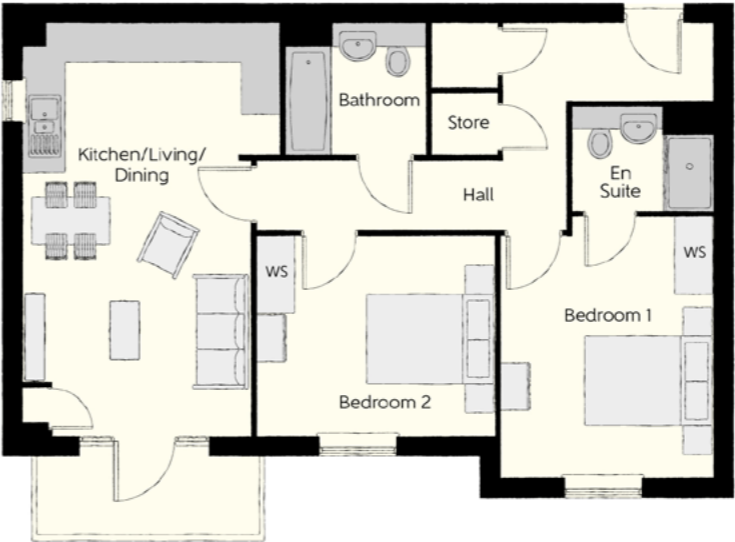
Clks - Cloakroom WS - Wardrobe Space (suggestion only, wardrobe not included)

Furniture arrangements are for illustrative purposes only. Items are not included, nor to scale.

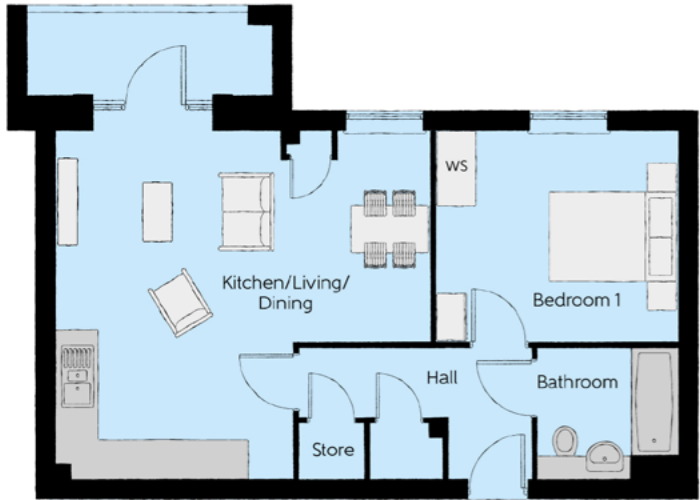
The items shown in this key may be subject to change, and positions could vary from those indicated on this floorplan. Please refer to Sales Advisor for details of your selected plot. External finishes and landscaping may vary. Please refer to Sales Advisor for further details. All dimensions are approximate and should not be used for carpet sizes, appliance spaces or furniture. We operate a policy of continuous improvement and individual features such as kitchen and bathroom layouts, doors, windows, garages and elevational treatments may vary from time to time. Consequently these particulars should be treated as general guidance only and do not constitute a contract, part of a contract or a warranty.



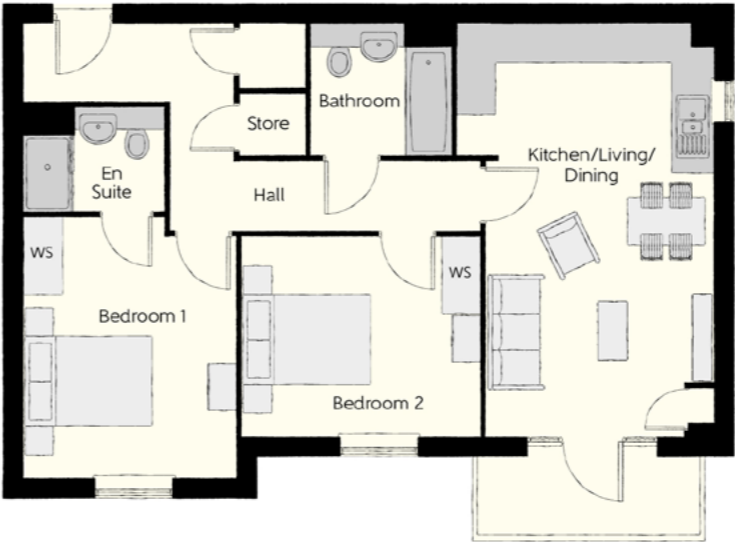
The Bouchard – Plots 48, 54 & 60		
Kitchen/Living/Dining	3.630m x 7.200m	11'11" x 23'7"
Bedroom 1	3.350m x 5.070m	11'0" x 16'8"
Bedroom 1 Ensuite	1.650m x 2.200m	5'5" x 7'3"
Bedroom 2	3.150m x 3.900m	10'4" x 12'9"
Bathroom	2.200m x 2.050m	7'3" x 6'9"
Total area	70.88 sq. m.	763 sq. ft.



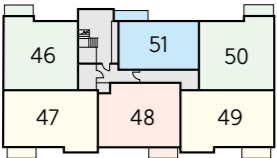
The Filbert – Plots 47, 53 & 59		
Kitchen/Living/Dining	4.000m x 6.400m	13'1" x 21'0"
Bedroom 1	3.310m x 4.070m	10'10" x 13'4"
Bedroom 1 Ensuite	2.200m x 1.650m	7'3" x 5'5"
Bedroom 2	3.720m x 3.100m	12'2" x 10'2"
Bathroom	2.200m x 2.050m	7'3" x 6'9"
Total area	70.70 sq. m.	761 sq. ft.



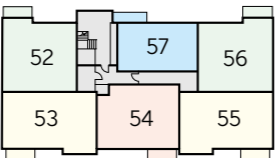
The Auger – Plots 51*, 57* & 63*		
Kitchen/Living/Dining	5.830m x 5.420m	19'1" x 17'9"
Bedroom	3.780m x 3.300m	12'5" x 10'10"
Bathroom	2.200m x 2.050m	7'3" x 6'9"
Total area	70.88 sq. m.	763 sq. ft.



The Filbert – Plots 49, 55 & 61		
Kitchen/Living/Dining	4.000m x 6.400m	13'1" x 21'0"
Bedroom 1	3.310m x 4.070m	10'10" x 13'4"
Bedroom 1 Ensuite	2.200m x 1.650m	7'3" x 5'5"
Bedroom 2	3.720m x 3.100m	12'2" x 10'2"
Bathroom	2.200m x 2.050m	7'3" x 6'9"
Total area	70.70 sq. m.	761 sq. ft.



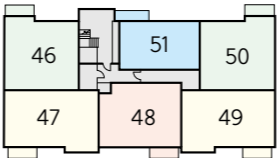
Ground Floor



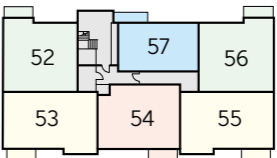
First Floor



Second Floor



Ground Floor



First Floor



Second Floor

Clks – Cloakroom WS – Wardrobe Space (suggestion only, wardrobe not included)

Furniture arrangements are for illustrative purposes only. Items are not included, nor to scale.

The items shown in this key may be subject to change, and positions could vary from those indicated on this floorplan. Please refer to Sales Advisor for details of your selected plot. External finishes and landscaping may vary. Please refer to Sales Advisor for further details. All dimensions are approximate and should not be used for carpet sizes, appliance spaces or furniture. We operate a policy of continuous improvement and individual features such as kitchen and bathroom layouts, doors, windows, garages and elevational treatments may vary from time to time. Consequently these particulars should be treated as general guidance only and do not constitute a contract, part of a contract or a warranty.

Clks – Cloakroom WS – Wardrobe Space (suggestion only, wardrobe not included)

Furniture arrangements are for illustrative purposes only. Items are not included, nor to scale.

The items shown in this key may be subject to change, and positions could vary from those indicated on this floorplan. Please refer to Sales Advisor for details of your selected plot. External finishes and landscaping may vary. Please refer to Sales Advisor for further details. All dimensions are approximate and should not be used for carpet sizes, appliance spaces or furniture. We operate a policy of continuous improvement and individual features such as kitchen and bathroom layouts, doors, windows, garages and elevational treatments may vary from time to time. Consequently these particulars should be treated as general guidance only and do not constitute a contract, part of a contract or a warranty.

Specification

FINISHES			1 & 2 Bedroom Homes	3 Bedroom Homes	4 Bedroom Homes	5 Bedroom Homes
	Ceilings	Crown White Matt Emulsion	●	●	●	●
	Walls	Crown White Matt Emulsion	●	●	●	●
	Floors	Concrete GF ; Chipboard FF	●	●	●	●
	Window Cills	White Gloss MDF	●	●	●	●
	Stairs	White Gloss MDF Strings	●	●	●	●
	Balusters	White Gloss Stop Chamfered Balusters	●	●	●	●
	Newel Posts	White Gloss Stop Chamfered Newels	●	●	●	●
		Oak Stop Chamfered Newels	●	●	●	
	Newel Caps	White Gloss Flat Top Newel Caps				●
		Oak Flat Top Newel Caps	●	●	●	
	Handrail	White Gloss Heavy Duty Handrail				●
		Oak Heavy Duty Handrail	●	●	●	
	Skirting	White Gloss 94x14 MDF Grooved & Chamfered				●
		White Gloss 120x14 MDF Grooved & Chamfered	●	●		
	Architrave	White Gloss 69x18 MDF Grooved & Chamfered			●	●
	Internal Doors	White Pre Finished Vertical Panel Internal Doors	●	●	●	●
	Ironmongery	Chrome SR100 Door Furniture	●	●	●	●
		Chrome SR700 Door Furniture				●
	Wardrobes	Sliding Fitted Wardrobes to Bed 1				●
	Carcass	Premium Grade 18mm thk Colour Matched Carcass	●	●	●	●
	Frontals	Bellway Band B options^	●	●		
		Bellway Band C options^			●	
		Bellway Band D options^				●
	Units	Frontal Matching Table Ends	●	●		
		Unit Framing			●	●
	Worktops	40mm Square Edge Worktops with Upstand	●	●	●	●
	Kitchen Sink	Leisure Linear Single Bowl Stainless Steel Sink inc. Sink Liner	●			
		Leisure Linear Bowl & Half Stainless Steel Sink inc. Sink Liner		●		
		Leisure Euroline Bowl & Half Stainless Steel Sink inc. Sink Liner			●	
		Leisure Seattle Bowl & Half Stainless Steel Sink inc. Sink Liner				●
	Utility Sink	Leisure Linear Single Bowl Stainless Steel Sink inc. Sink Liner		●		
		Leisure Euroline Single Bowl Stainless Steel Sink inc. Sink Liner			●	
		Leisure Seattle Single Bowl Stainless Steel Sink inc. Sink Liner				●
	Appliances Oven	Zanussi Single Oven ZOB343X	●	●		
		Zanussi Single Oven ZOB35471XK			●	
		AEG Single Oven BPK642020M				●
	Appliances Hob	Zanussi 4 Burner Gas Hob ZGH62414XS & SS Splashback	●	●		
		Zanussi 4 Burner Gas Hob ZGH65411XB & SS Splashback			●	
		AEG 5 Burner Gas Hob HG755450SY & SS Splashback				●
	Appliances Extractor	Zanussi Cooker Hood Extractor ZHC60156X	●	●	●	
		AEG Cooker Hood Extractor DKB4950M				●
	Appliances Extractor (Island)	Cooker Hood Extractor LF1519X††			●	
		AEG Cooker Hood Extractor DIE6180HM††				●
	Appliances Microwave	Zanussi Microwave ZKK47901XK			●	
		AEG Microwave KMK721000M				●
	Appliances Fridge Freezer	Fridge/Freezer Space Only	●	●		
		Zanussi 70/30 Fridge/Freezer ZBB28441SV			●	
		Zanussi 70/30 Fridge/Freezer ZBB28441SV (2no)				●
	Appliance Dishwasher	Removable Unit**	●	●		
		Zanussi Dishwasher ZDT21006FA			●	●
	Appliance Washing Machine	Washing Machine Space Only	●	●	●	●
	Cloaks - WC	Roca DEBBA WC with Concealed Cistern & PL1 Flush Plate†††	●	●	●	●
	Cloaks - Basin	Roca Wash Hand Basin††	●	●	●	●
	Cloaks - Brassware	Bristan PISA Small Basin Chrome Mixer Tap	●	●	●	●
	Cloaks - Tiling	Splashback Tiling to Wash Hand Basin with Flat Edge White Trim	●	●	●	●
	Bathroom - WC	Roca DEBBA WC with Concealed Cistern & PL1 Flush Plate†††	●	●	●	●
	Bathroom - Basin	Roca DEBBA 500 WHB with Full Pedestal	●	●		
		Roca DEBBA 550 WHB with Semi Pedestal			●	●
	Bathroom - Bath	Roca MALAGA Acrylic Bath & Rigid Bath Panel	●	●	●	●
	Bathroom - Brassware	Bristan PISA Chrome Bath & Basin Mixer Taps	●	●		
		Bristan SAIL Chrome Bath & Basin Mixer Taps			●	●

WETROOMS			1 & 2 Bedroom Homes	3 Bedroom Homes	4 Bedroom Homes	5 Bedroom Homes
	Bathroom - Shower Tray	Mira FLIGHT Low Shower Tray with Mira ELEVATE Enclosure††	●	●	●	●
	Bathroom - Shower	Mira RELATE EV Thermostatic Shower‡	●	●		
		Mira RELATE EV Thermostatic Shower^^			●	●
	Bathroom - Tiling	1/2 Height Tiling (Band 2) to Wet Walls with Flat Edged White Trim*†	●	●		
		1/2 Height Tiling (Band 3) to Wet Walls with Flat Edged Chrome Trim*†			●	●
	En Suite - WC	Roca DEBBA WC with Concealed Cistern & PL1 Flush Plate†††	●	●	●	●
	En Suite - Basin	Roca DEBBA 450 WHB with Full Pedestal	●	●		
		Roca DEBBA 550 WHB with Semi Pedestal			●	●
	En Suite - Bath	Roca MALAGA Acrylic Bath & Rigid Bath Panel††				●
	En Suite - Brassware	Bristan PISA Chrome Bath & Basin Mixer Taps	●	●		
		Bristan SAIL Chrome Bath & Basin Mixer Taps			●	●
	En Suite - Shower Tray	Mira FLIGHT Low Shower Tray with Mira ELEVATE Enclosure††	●	●	●	●
	En Suite - Shower	Mira RELATE EV Thermostatic Shower***	●	●	●	
		Mira RELATE ERD Thermostatic Shower				●
	En Suite - Tiling	1/2 Height Tiling (Band 2) to Wet Walls with Flat Edged White Trim†	●	●		
		1/2 Height Tiling (Band 3) to Wet Walls with Flat Edged Chrome Trim†			●	●
	Boiler	Ideal LOGIC Combination Boiler	●	●		
		Ideal LOGIC Boiler & ThermaQ Evocyl HW Cylinder			●	●
	Controls	Dual Zoned 3 way Heating Programmer	●	●	●	●
	Radiator	Stelrad Compact Steel Panel Radiators with Grilles	●	●	●	●
	Towel Warmers	Flat Chrome to Bathroom Only	●	●	●	●
		Flat Chrome to Bathroom & En Suite 1 Only				●
	Ventilation	Window Trickle Ventilators with Mechanical Extract Fans (system 1)	●	●	●	●
	Consumer Unit	Wylex Consumer Unit	●	●	●	●
	USB Locations	Kitchen, Lounge & Bedroom 1 ONLY	●	●	●	●
	Shaver/Toothbrush Point	Bathroom ONLY	●	●	●	●
	Communications - Satellite	Dual Connection Satellite Points to Lounge	●	●	●	●
	Security - Fire	Optical Smoke Detector	●	●	●	●
	Sockets & Switches	Electrium CASA White Fittings	●	●	●	●
	Lighting	Pendant Fitting to Habitable Rooms	●	●	●	●
	Lighting - Kitchen	White Recessed Spot Lights Warm White	●	●		
		Polished Chrome Recessed Spot Lights Warm White			●	●
	Lighting - Kitchen Under Unit	High Output Tri-Light				●
	Lighting - Bathroom & En-Suites	White Recessed Spot Lights Cool White	●	●		
		Polished Chrome Recessed Spot lights Cool White			●	●
	Lighting - External	External Light Clifton Brushed Steel Up/Down	●	●	●	●
	Communications - TV	TV Point to Lounge, Family, Bedroom 1 & Study	●	●	●	●
	Communications - Data	Cat 6 Network Point to Lounge, Family, Bedroom 1 & Study	●	●	●	●
	Communications - Voice	Telephone Point to Lounge	●	●	●	●
	Broadband	Ultrafast Fibre Connectivity	●	●	●	●
	Security - Carbon	Honeywell XC70 Carbon Monoxide Detector	●	●	●	●
	Footpath & Patio	Grey PCC Flags 450x450x38's	●	●	●	●
	Drives	Bitmac Black‡‡	●	●	●	●
	Landscaping - Front	Medallion Turf & Landscape Planting‡‡‡	●	●	●	●
	Landscaping - Rear	Rotovated Topsoil	●	●	●	●
	Maintenance	External Tap	●	●	●	●
	Number Plaque	Artisan Number Plaque	●	●	●	●

* full height around bath where shower provided as standard

** at build stage

*** flow regulator fitted to bath mixer if serving single thermostatic shower & fed via combination boiler

† full height to shower enclosure

†† housetype dependent

††† inc soft close mechanism seat on 4 beds ONLY

‡ over bath ONLY incorporating MIRA bath screen 1.1863.004 where no shower elsewhere in dwelling

‡‡ plot dependent

‡‡‡ plot specific, refer to site layout

^ refer to site landscape layout

^^ soft close mechanism to doors and drawers

^^^ where provision of shower tray allows

Information correct at time of going to print. In the event of product discontinuation or issues with stock availability Bellway will always fit a suitable alternative.



Dedicated to delivering quality

An enhanced specification is the hallmark of The Artisan Collection.

All of our homes are equipped with superior fixtures and fittings, which dovetails perfectly with our focus on design and attention to detail.

Expertly crafted using state-of-the-art materials, your brand new home is finished to a high standard so you can start enjoying it the moment you get your keys.

“The overall finish of the home is perfect – Bellway really pay attention to every detail. The team were amazing and supported us throughout the process.”

SAMI AND SARA,
HANWOOD PARK

Homes to love, built with care

From the first day you visit our sales centre, to the day you move in and beyond, we aim to provide a level of service and after-sales care that is second to none.

A number of quality checks are carried out on each of our new homes through the construction process and on completion. Once your home has passed all of our quality checks, you will be invited to attend your Home Demonstration which will provide an opportunity for you to understand the various elements of your new home. On move in day, our site and sales teams will be there to ensure that everything goes as smoothly as possible.

Once you’ve settled into your new home, Bellway has experienced after-sales teams to provide support and assistance whenever you need it. Our homes come with a 10-year NHBC Buildmark policy, or an equivalent warranty from another provider. This includes deposit protection from exchange of contracts, a two-year builder warranty from legal completion, and then eight years of structural defects insurance cover.*

We are confident that our approach to building and selling quality homes, coupled with our customer care processes, will provide you with many years of enjoyment in your new home.



*For more details, visit the NHBC website at www.nhbc.co.uk/homeowners and view the 'Welcome to NHBC warranty and insurance' brochure, or refer to the brochure of your alternative warranty provider.



How to find us



Bellway abides by the New Homes Quality Code (NHQC), an independent industry code established to champion quality new homes and deliver better outcomes for customers.

Bellway

