



THE
ARTISAN
COLLECTION

Kingsmere Park

AREA GUIDE



New Road (A347)
West Parley
Ferndown
BH22 8EB
Telephone: 01202 139 553
bellway.co.uk

Bellway



Beautiful homes, ideally located

AMENITIES, TRANSPORT AND EDUCATION ALL ON YOUR DOORSTEP

Kingsmere Park is a fantastic new development of high-specification homes from our Artisan range, situated in the popular area of Parley Cross, Bournemouth. Comprising of 1 and 2-bedroom apartments and 2, 3 and 4-bedroom homes, these homes are perfect for first-time buyers, commuters, families and those looking to downsize.

Built across a variety of styles to the exacting Bellway standard, these homes present a range of contemporary design features including open-plan living spaces, contemporary fitted kitchens and en-suite bathrooms in addition to either garages or allocated parking to each property.



Choose a fine quality of life at Kingsmere Park

A FANTASTIC DEVELOPMENT COMPLEMENTED BY PROXIMITY TO BEAUTIFUL BOURNEMOUTH

The development is well served by Parley Cross Crossroads bus stop just a one-minute walk away, with trips to Wimborne and Bournemouth. Bournemouth railway station is just over five miles away, with direct links to London, Poole and Southampton. For travel further afield, Bournemouth Airport is two-and-a-half miles away, with both international and regional flights available.

The homes have a fantastic choice of shopping destinations nearby, the closest being a supermarket express and a pharmacy just one minute's walk away. For a wider variety of choice, residents can reach a newly built Lidl supermarket and grocery superstore, both under a ten-minute drive away. The centre of Bournemouth is well supplied with popular retail options, and a little further out are several popular shopping centres. Richmond Gardens Shopping Centre, Bournemouth Shopping Arcade, and Castlepoint Shopping Centre – one of the largest shopping parks in the UK – are all under 15 minutes' drive away.

For dining, the site is under a 15-minute walk away from several traditional pubs, while neighbouring Bournemouth offers a selection of seafood, Thai, American and Italian options.

Residents of Kingsmere Park have a rich array of activities to enjoy. Popular attraction Durdley Golf Club is a mile away, boasting a well-equipped golf course, a spa and gym.



For those interested in walking amongst nature, Parley Common Nature Reserve is just a short four-minute drive away. For more adrenaline-filled fun, Snowtrax Alpine Activity Centre is just a 10-minute drive away, with superb facilities for skiing and snowboarding. Canford Park (SANG) is just under four miles away, with the natural area boasting a variety of walking routes.

Just seven miles away is the Lighthouse centre for arts, which hosts regular exciting shows ranging from theatre and circus acts to music and dance performances. Around a 15-minute drive away is Russell-Cotes Art Gallery and Garden, which features picturesque views and impressive artistic collections. New Forest National Park is just over eight miles away, with the serene landscape filled with forestry, coastline and wildlife.

For family days out, the Bournemouth coastline is just a 20-minute drive away and boasts seven miles of award-winning beaches.

Those with children will benefit from having a selection of schools nearby. Close to the homes, Parley Cross First School will be just a four-minute drive away, while Ferndown First School, West Moors Middle School and Ferndown Upper School are all around a 10-minute drive away. For those interested in further education, Bournemouth and Poole College is around six-and-a-half miles away.

For higher education options, Bournemouth University is just four miles away and Southampton University takes around 40 minutes by car. Residents can reach Portsmouth University in an hour when driving.







Apartments

- Aspen House
Plots 75 - 82
- Birch House
Plots 94 - 103
- Rowan House
Plots 179 - 191
- Hazel House
Plots 199 - 213

1-4 Bedroom Homes

- Rented Homes

2-3 Bedroom Homes

- Shared Ownership Homes

2 Bedroom Homes

- The Potter
Plots 48, 49, 50, 51, 52, 55, 56 & 57
- The Slater
Plots 53 & 54
- The Cooper
Plots 13, 14, 15, 45, 46, 47, 67, 68, 150, 151, 232, 233 & 234
- The Joiner
Plots 58, 59, 60, 74, 122, 126, 127, 128, 135, 136, 177, 214, 215, 218 & 223
- The Blacksmith
Plots 131, 132 & 133
- The Saddler
Plots 124 & 129

3 Bedroom Homes

- The Coppersmith
Plots 39, 40 & 41
- The Tailor
Plots 35, 36, 62, 63, 65, 66, 69, 70, 141, 142, 143, 236 & 237
- The Thespian
Plots 1, 42, 61, 64, 73, 123, 125, 134, 178, 219, 224, 235 & 238
- The Fletcher
Plots 168, 169, 172, 173 & 197
- The Turner
Plots 6, 7, 10, 11, 19, 20, 21, 24, 25, 30, 31, 71 & 72
- The Mason
Plots 2, 3, 9, 22, 23 & 32
- The Spinner
Plots 192, 193, 194, 195, 196 & 198
- The Webster
Plots 119, 120, 121, 139, 140, 152, 153, 167, 170, 171, 174, 175 & 176
- The Chandler
Plots 216, 217, 225 & 226

4 Bedroom Homes

- The Goldsmith
Plots 4, 16, 28 & 43
- The Bowyer
Plots 5, 8, 12, 17, 18, 26, 27, 29, 37, 38 & 44
- The Jeweller
Plot 34
- The Scrivener
Plot 33

Key to plan

- s/s Sub station
- g/g Gas governor
- v Visitor parking
- bcp Bin collection point
- b/s Bin store
- c/s Cycle store

The site plan is drawn to show the relative position of individual properties. NOT TO SCALE. This is a two dimensional drawing and will not show land contours and gradients, boundary treatments, landscaping or local authority street lighting. Footpaths subject to change. For details of individual properties and availability please refer to our Sales Advisor.





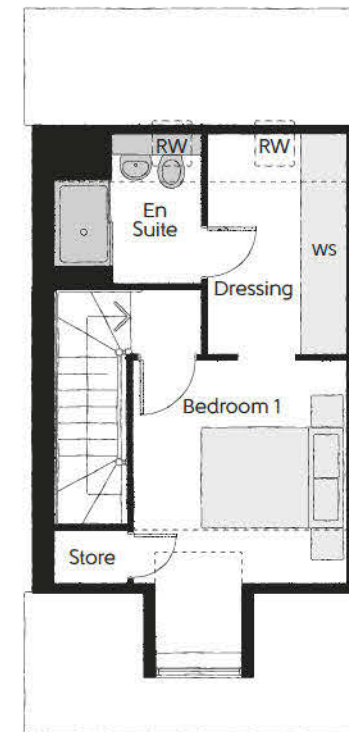
The Fletcher

THREE BEDROOM HOME



The Fletcher

Three bedroom home

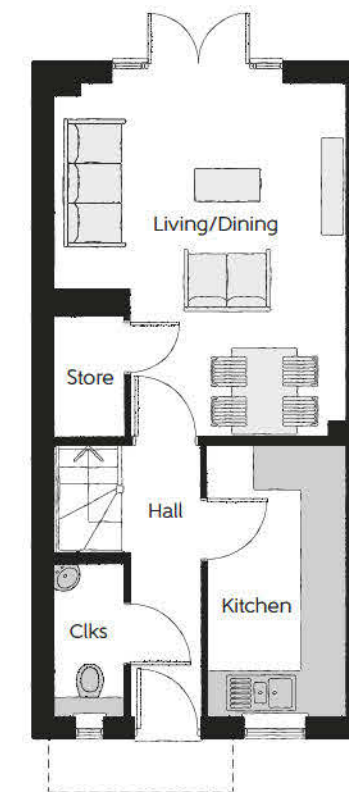
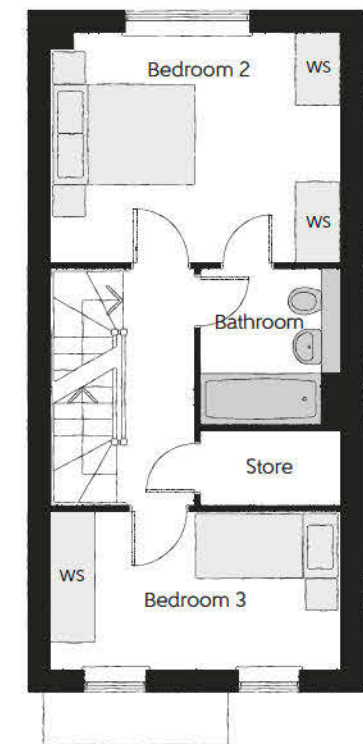


Second Floor

Bedroom 1	2.95m x 4.13m (max) (max)	9'8" x 13'7" (max) (max)
Dressing	1.90m x 3.09m	6'3" x 10'1"
Bedroom 1 En Suite	2.00m x 2.08m	6'7" x 6'10"

First Floor

Bedroom 2	3.99m x 3.16m	13'1" x 10'4"
Bedroom 3	3.99m x 2.17m	13'1" x 7'1"
Bathroom	1.90m x 2.15m	6'3" x 7'0"



Ground Floor

Kitchen	1.89m x 3.72m	6'3" x 12'2"
Living/Dining	3.99m x 4.92m (max) (max)	13'1" x 16'2" (max) (max)
Cloakroom	0.95m x 2.11m	3'1" x 6'11"

Clks - Cloakroom WS - Wardrobe Space (suggestion only, wardrobe not included) RW - Roof Window ---- - Reduced Head Height

Furniture arrangements are for illustrative purposes only. Items are not included, nor to scale.

The items shown in this key may be subject to change, and positions could vary from those indicated on this floorplan. Please refer to Sales Advisor for details of your selected plot. Computer generated image shown overleaf. External finishes, landscaping and configuration may vary from plot to plot. Please refer to Sales Advisor for further details. All dimensions are approximate and should not be used for carpet sizes, appliance spaces or furniture. We operate a policy of continuous improvement and individual features such as kitchen and bathroom layouts, doors, windows, garages and elevational treatments may vary from time to time. Consequently these particulars should be treated as general guidance only and do not constitute a contract, part of a contract or a warranty. FL/CB/500/S00/S/01/D.



THE
ARTISAN
COLLECTION

The Cooper

TWO BEDROOM HOME



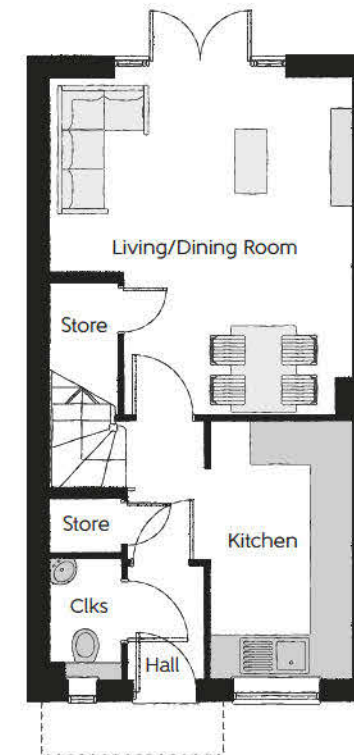
The Cooper - Plots 150 & 151

Two bedroom home



First Floor

Bedroom 1	3.19m x 3.90m (max)	10'5" x 12'9" (max)
Bedroom 1 En Suite	1.37m x 2.06m	4'6" x 6'9"
Bedroom 2	4.22m x 2.27m (max)	13'10" x 7'5" (max)
Bathroom	1.91m x 1.99m	6'3" x 6'6"



Ground Floor

Kitchen	1.99m x 3.58m	6'6" x 11'9"
Living/Dining Room	4.22m x 4.67m (max)	13'10" x 15'4" (max)
Cloakroom	0.99m x 1.66m	3'3" x 5'5"

Clks - Cloakroom WS - Wardrobe Space (suggestion only, wardrobe not included)

Furniture arrangements are for illustrative purposes only. Items are not included, nor to scale.

The items shown in this key may be subject to change, and positions could vary from those indicated on this floorplan. Please refer to Sales Advisor for details of your selected plot. Computer generated image shown overleaf. External finishes, landscaping and configuration may vary from plot to plot. Please refer to Sales Advisor for further details. All dimensions are approximate and should not be used for carpet sizes, appliance spaces or furniture. We operate a policy of continuous improvement and individual features such as kitchen and bathroom layouts, doors, windows, garages and elevational treatments may vary from time to time. Consequently these particulars should be treated as general guidance only and do not constitute a contract, part of a contract or a warranty. CO/CB/500/S00/S/01/J.



THE
ARTISAN
COLLECTION

The Spinner

THREE BEDROOM HOME
PLOTS 192, 193, 194 & 195



The Spinner - Plots 192, 193, 194 & 195

Three bedroom home

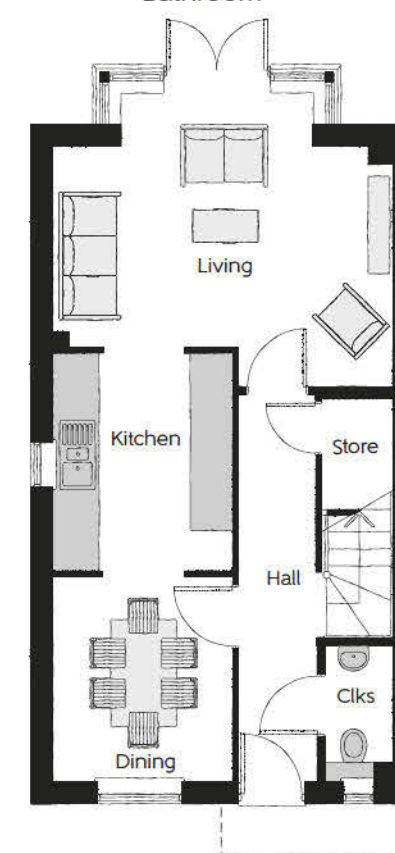


Second Floor

Bedroom 1	3.64m x 4.89m (max) (max)	11'11" x 16'1" (max) (max)
Dressing	2.28m x 2.29m	7'6" x 7'6"
Bedroom 1 En Suite	2.30m x 2.29m	7'7" x 7'6"

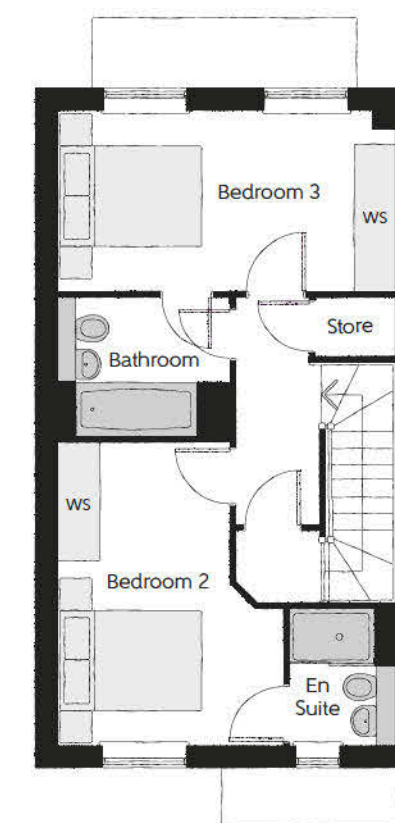
First Floor

Bedroom 2	3.13m x 4.21m (max)	10'3" x 13'10" (max)
Bedroom 2 En Suite	1.45m x 1.90m	4'9" x 6'3"
Bedroom 3	4.67m x 2.47m	15'4" x 8'1"
Bathroom	2.38m x 1.93m	7'10" x 6'4"



Ground Floor

Kitchen	2.49m x 3.02m	8'2" x 9'11"
Dining	2.49m x 2.84m	8'2" x 9'4"
Living	4.67m x 4.10m (max) (max)	15'4" x 13'5" (max) (max)
Cloakroom	0.95m x 1.90m	3'1" x 6'3"



Clks - Cloakroom WS - Wardrobe Space (suggestion only, wardrobe not included) RW - Roof Window ---- - Reduced Head Height

Furniture arrangements are for illustrative purposes only. Items are not included, nor to scale.

The items shown in this key may be subject to change, and positions could vary from those indicated on this floorplan. Please refer to Sales Advisor for details of your selected plot. Computer generated image shown overleaf. External finishes, landscaping and configuration may vary from plot to plot. Please refer to Sales Advisor for further details. All dimensions are approximate and should not be used for carpet sizes, appliance spaces or furniture. We operate a policy of continuous improvement and individual features such as kitchen and bathroom layouts, doors, windows, garages and elevational treatments may vary from time to time. Consequently these particulars should be treated as general guidance only and do not constitute a contract, part of a contract or a warranty. SP/CB/500/500/S/01/E.



THE
ARTISAN
COLLECTION

The Webster

THREE BEDROOM HOME



The Webster

Three bedroom home

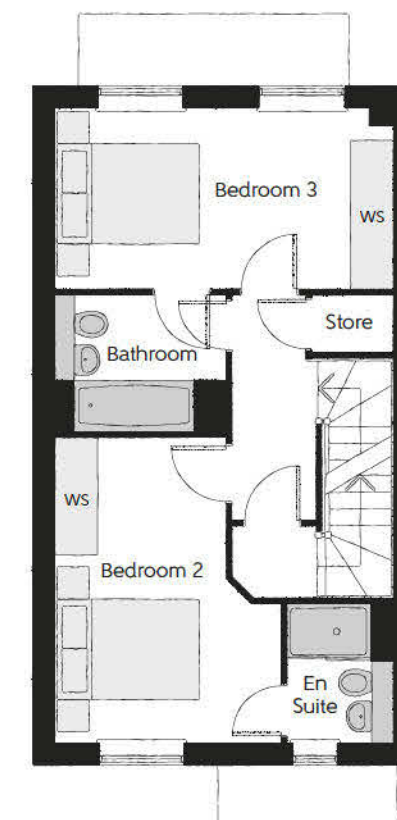


Second Floor

Bedroom 1	3.63m x 4.89m (max)	11'11" x 16'1" (max)
Dressing	2.28m x 2.30m	7'6" x 7'7"
Bedroom 1 En Suite	2.30m x 2.30m	7'7" x 7'7"

First Floor

Bedroom 2	3.13m x 4.21m (max)	10'3" x 13'10" (max)
Bedroom 2 En Suite	1.45m x 1.90m	4'9" x 6'3"
Bedroom 3	4.67m x 2.47m	15'4" x 8'1"
Bathroom	2.38m x 1.93m	7'10" x 6'4"



Ground Floor

Kitchen/Dining	4.67m x 4.10m (max)	15'4" x 13'5" (max)
Living Room	3.63m x 5.33m (max)	11'11" x 17'6" (max)
Cloakroom	0.95m x 1.90m	3'1" x 6'3"

No window
to plot 120

Clks - Cloakroom WS - Wardrobe Space (suggestion only, wardrobe not included) RW - Roof Window ---- - Reduced Head Height

Furniture arrangements are for illustrative purposes only. Items are not included, nor to scale.

The items shown in this key may be subject to change, and positions could vary from those indicated on this floorplan. Please refer to Sales Advisor for details of your selected plot. Computer generated image shown overleaf. External finishes, landscaping and configuration may vary from plot to plot. Please refer to Sales Advisor for further details. All dimensions are approximate and should not be used for carpet sizes, appliance spaces or furniture. We operate a policy of continuous improvement and individual features such as kitchen and bathroom layouts, doors, windows, garages and elevational treatments may vary from time to time. Consequently these particulars should be treated as general guidance only and do not constitute a contract, part of a contract or a warranty. WB/CB/500/S00/S/01/E.



THE
ARTISAN
COLLECTION

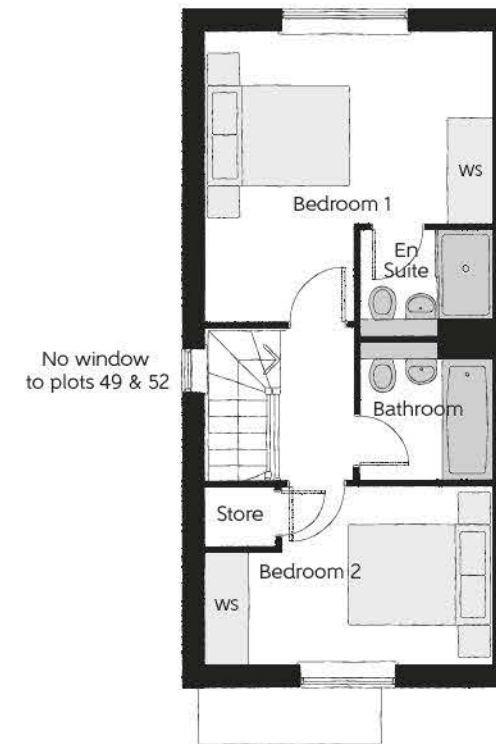
The Potter

TWO BEDROOM HOME



The Potter

Two bedroom home



First Floor

Bedroom 1	3.99m x 4.04m (max)	13'1" x 13'3" (max)
Bedroom 1 En Suite	1.86m x 1.48m	6'1" x 4'10"
Bedroom 2	3.99m x 2.47m (max)	13'1" x 8'1" (max)
Bathroom	1.86m x 1.92m	6'1" x 6'3"



Ground Floor

Kitchen	1.80m x 3.72m	5'11" x 12'2"
Living/Dining	3.99m x 4.92m (max)	13'1" x 16'2" (max)
Cloakroom	0.94m x 1.60m	3'1" x 5'3"

Clks - Cloakroom WS - Wardrobe Space (suggestion only, wardrobe not included)

Furniture arrangements are for illustrative purposes only. Items are not included, nor to scale.

The items shown in this key may be subject to change, and positions could vary from those indicated on this floorplan. Please refer to Sales Advisor for details of your selected plot. Computer generated image shown overleaf. External finishes, landscaping and configuration may vary from plot to plot. Please refer to Sales Advisor for further details. All dimensions are approximate and should not be used for carpet sizes, appliance spaces or furniture. We operate a policy of continuous improvement and individual features such as kitchen and bathroom layouts, doors, windows, garages and elevational treatments may vary from time to time. Consequently these particulars should be treated as general guidance only and do not constitute a contract, part of a contract or a warranty. PO/CB/500/S00/S/01/K.



THE
ARTISAN
COLLECTION

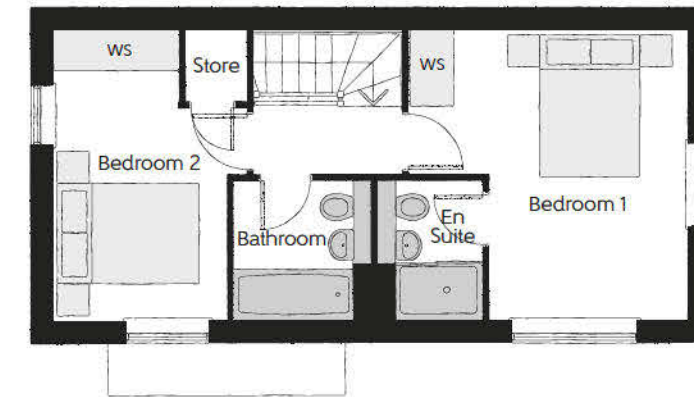
The Slater

TWO BEDROOM HOME



The Slater

Two bedroom home



First Floor

Bedroom 1	3.99m x 3.88m (max) (max)	13'1" x 12'9" (max) (max)
Bedroom 1 En Suite	1.90m x 1.48m	6'3" x 4'10"
Bedroom 2	3.99m x 2.63m (max) (max)	13'1" x 8'7" (max) (max)
Bathroom	1.90m x 1.92m	6'3" x 6'3"



Ground Floor

Kitchen	3.99m x 1.82m	13'1" x 6'0"
Living/Dining	3.99m x 5.15m (max) (max)	13'1" x 16'11" (max) (max)
Cloakroom	1.62m x 1.01m	5'4" x 3'4"

Clks - Cloakroom WS - Wardrobe Space (suggestion only, wardrobe not included)

Furniture arrangements are for illustrative purposes only. Items are not included, nor to scale.

The items shown in this key may be subject to change, and positions could vary from those indicated on this floorplan. Please refer to Sales Advisor for details of your selected plot. Computer generated image shown overleaf. External finishes, landscaping and configuration may vary from plot to plot. Please refer to Sales Advisor for further details. All dimensions are approximate and should not be used for carpet sizes, appliance spaces or furniture. We operate a policy of continuous improvement and individual features such as kitchen and bathroom layouts, doors, windows, garages and elevational treatments may vary from time to time. Consequently these particulars should be treated as general guidance only and do not constitute a contract, part of a contract or a warranty. SL/CB/500/S00/S/01/A.



THE
ARTISAN
COLLECTION

The Joiner

TWO BEDROOM HOME



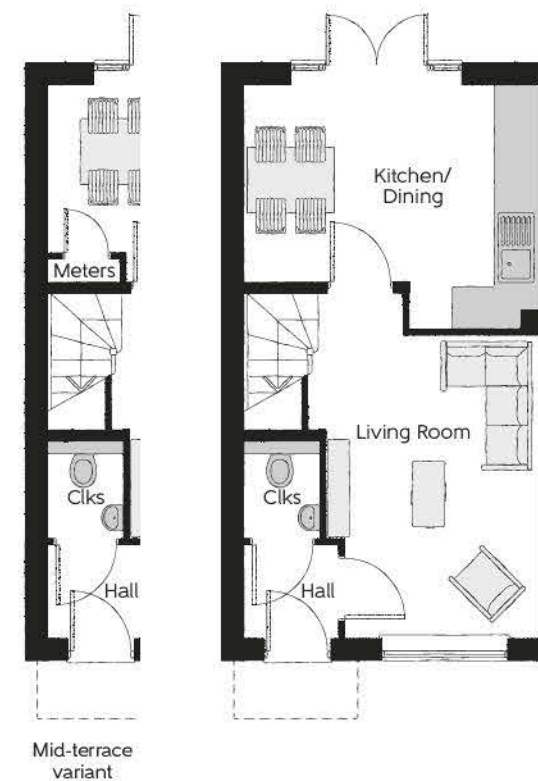
The Joiner

Two bedroom home



First Floor

Bedroom 1	4.05m x 2.72m	13'3" x 8'11"
Bedroom 2	4.05m x 2.40m (max)	13'3" x 7'10" (max)
Bathroom	1.91m x 2.36m	6'3" x 7'9"



Ground Floor

Kitchen/Dining	4.05m x 3.38m (max)	13'3" x 11'1" (max)
Living Room	2.95m x 4.85m (max)	9'8" x 15'11" (max)
Cloakroom	1.01m x 1.50m	3'4" x 4'11"

Clks - Cloakroom WS - Wardrobe Space (suggestion only, wardrobe not included)

Furniture arrangements are for illustrative purposes only. Items are not included, nor to scale.

The items shown in this key may be subject to change, and positions could vary from those indicated on this floorplan. Please refer to Sales Advisor for details of your selected plot. Computer generated image shown overleaf. External finishes, landscaping and configuration may vary from plot to plot. Please refer to Sales Advisor for further details. All dimensions are approximate and should not be used for carpet sizes, appliance spaces or furniture. We operate a policy of continuous improvement and individual features such as kitchen and bathroom layouts, doors, windows, garages and elevational treatments may vary from time to time. Consequently these particulars should be treated as general guidance only and do not constitute a contract, part of a contract or a warranty. JO/CB/500/S00/S/01/J.



THE
ARTISAN
COLLECTION

The Blacksmith

TWO BEDROOM HOME



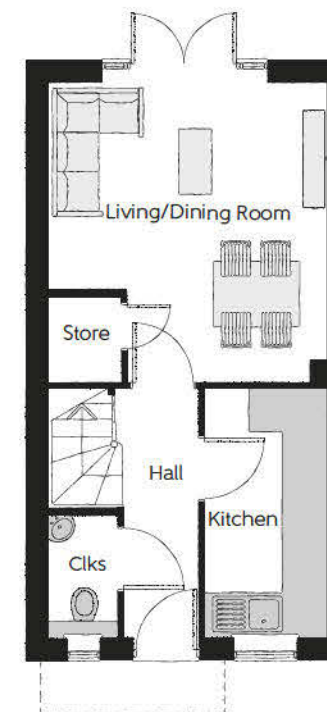
The Blacksmith

Two bedroom home



First Floor

Bedroom 1	3.82m x 2.87m	12'7" x 9'5"
Bedroom 2	3.82m x 2.74m (max)	12'7" x 9'0" (max)
Bathroom	1.71m x 1.88m	5'7" x 6'2"



Ground Floor

Kitchen	1.67m x 3.43m	5'6" x 11'3"
Living/Dining Room	3.82m x 4.14m (max)	12'7" x 13'7" (max)
Cloakroom	0.93m x 1.64m	3'1" x 5'4"

Clks - Cloakroom WS - Wardrobe Space (suggestion only, wardrobe not included)

Furniture arrangements are for illustrative purposes only. Items are not included, nor to scale.

The items shown in this key may be subject to change, and positions could vary from those indicated on this floorplan. Please refer to Sales Advisor for details of your selected plot. Computer generated image shown overleaf. External finishes, landscaping and configuration may vary from plot to plot. Please refer to Sales Advisor for further details. All dimensions are approximate and should not be used for carpet sizes, appliance spaces or furniture. We operate a policy of continuous improvement and individual features such as kitchen and bathroom layouts, doors, windows, garages and elevational treatments may vary from time to time. Consequently these particulars should be treated as general guidance only and do not constitute a contract, part of a contract or a warranty. BL/CB/500/S00/S/01/N.



THE
ARTISAN
COLLECTION

The Saddler

TWO BEDROOM COACH HOUSE

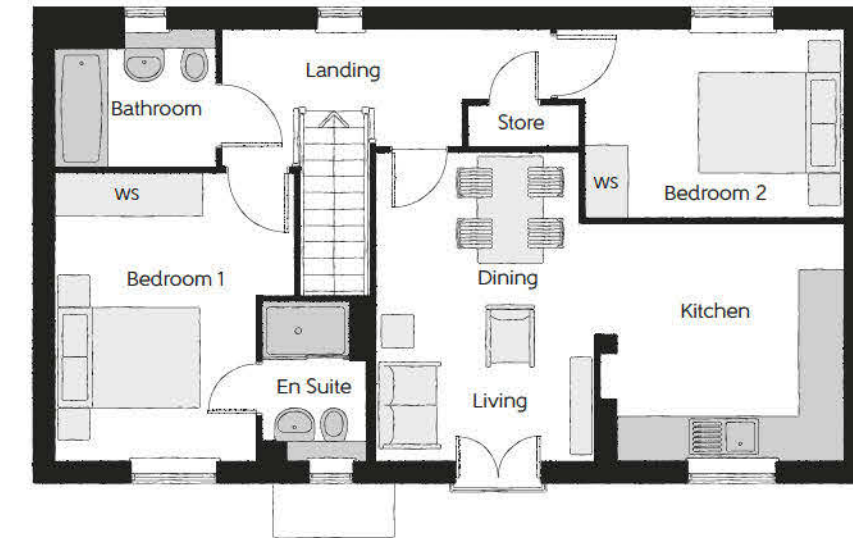


bellway.co.uk

Bellway

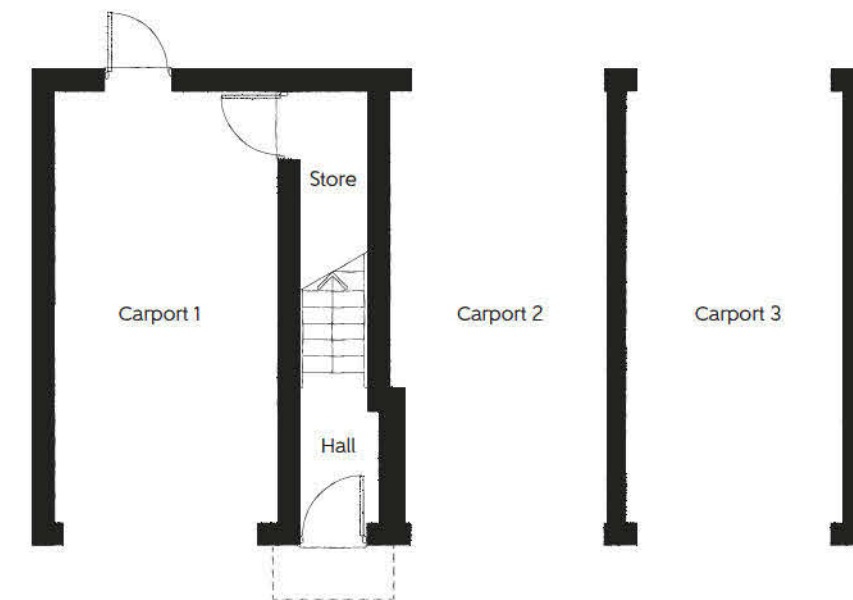
The Saddler

Two bedroom coach house



First Floor

Kitchen/Dining	3.08m x 4.28m (max) (max)	10'1" x 14'0" (max) (max)
Living	3.14m x 3.29m	10'4" x 10'10"
Bedroom 1	3.31m x 3.98m (max)	10'10" x 13'1" (max)
Bedroom 1 En Suite	1.46m x 2.20m	4'9" x 7'3"
Bedroom 2	3.58m x 2.59m	11'9" x 8'6"
Bathroom	2.21m x 1.91m	7'3" x 6'3"



Ground Floor

**Important note: The Saddler is allocated a single carport.
Please refer to the Sales Advisor for further information.**

Clks - Cloakroom WS - Wardrobe Space (suggestion only, wardrobe not included)

Furniture arrangements are for illustrative purposes only. Items are not included, nor to scale.

The items shown in this key may be subject to change, and positions could vary from those indicated on this floorplan. Please refer to Sales Advisor for details of your selected plot. Computer generated image shown overleaf. External finishes, landscaping and configuration may vary from plot to plot. Please refer to Sales Advisor for further details. All dimensions are approximate and should not be used for carpet sizes, appliance spaces or furniture. We operate a policy of continuous improvement and individual features such as kitchen and bathroom layouts, doors, windows, garages and elevational treatments may vary from time to time. Consequently these particulars should be treated as general guidance only and do not constitute a contract, part of a contract or a warranty. SA/CB/500/S00/D/01/E.



THE
ARTISAN
COLLECTION

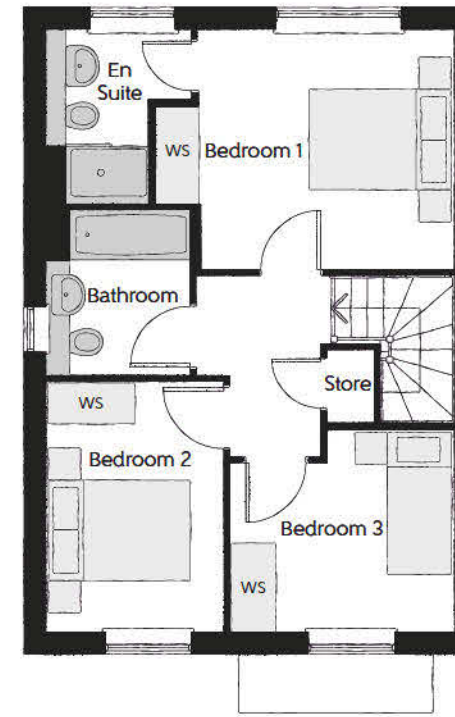
The Coppersmith

THREE BEDROOM HOME



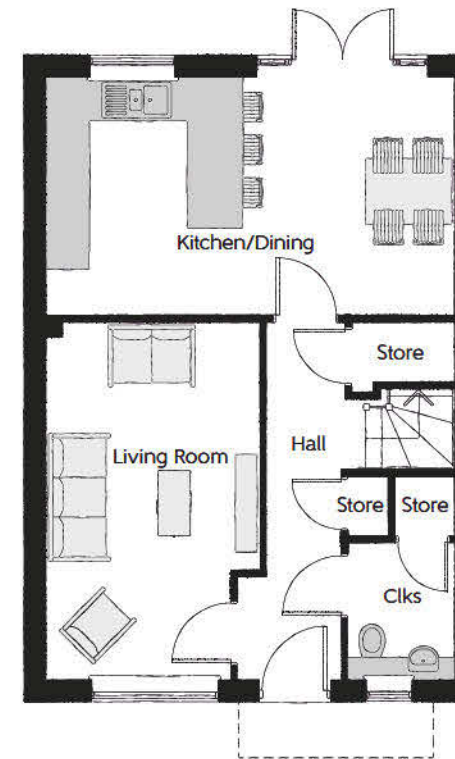
The Coppersmith

Three bedroom home



First Floor

Bedroom 1	4.15m x 3.30m (max)	13'7" x 10'10" (max)
Bedroom 1 En Suite	2.03m x 2.39m	6'8" x 7'10"
Bedroom 2	2.43m x 3.46m	8'0" x 11'4"
Bedroom 3	3.11m x 2.81m (max)	10'3" x 9'3" (max)
Bathroom	1.98m x 2.31m	6'6" x 7'7"



Ground Floor

Kitchen/Dining	5.64m x 3.24m	18'6" x 10'7"
Living Room	2.94m x 4.95m	9'8" x 16'3"
Cloakroom	1.47m x 1.89m	4'10" x 6'3"

Clks - Cloakroom WS - Wardrobe Space (suggestion only, wardrobe not included)

Furniture arrangements are for illustrative purposes only. Items are not included, nor to scale.

The items shown in this key may be subject to change, and positions could vary from those indicated on this floorplan. Please refer to Sales Advisor for details of your selected plot. Computer generated image shown overleaf. External finishes, landscaping and configuration may vary from plot to plot. Please refer to Sales Advisor for further details. All dimensions are approximate and should not be used for carpet sizes, appliance spaces or furniture. We operate a policy of continuous improvement and individual features such as kitchen and bathroom layouts, doors, windows, garages and elevational treatments may vary from time to time. Consequently these particulars should be treated as general guidance only and do not constitute a contract, part of a contract or a warranty. CS/CB/500/S00/D/01/E.



THE
ARTISAN
COLLECTION

The Tailor

THREE BEDROOM HOME



The Tailor

Three bedroom home



First Floor

Bedroom 1	3.29m x 3.34m (max)	10'10" x 11'0" (max)
Bedroom 1 En Suite	1.40m x 2.43m	4'7" x 8'0"
Bedroom 2	2.52m x 3.09m	8'3" x 10'2"
Bedroom 3	2.17m x 2.04m	7'1" x 6'8"
Bathroom	2.52m x 1.97m	8'3" x 6'5"



Ground Floor

Kitchen/Dining	4.78m x 3.45m (max)	15'8" x 11'4" (max)
Living Room	3.68m x 5.14m (max)	12'1" x 16'10" (max)
Cloakroom	1.01m x 1.66m	3'4" x 5'5"

Clks - Cloakroom WS - Wardrobe Space (suggestion only, wardrobe not included)

Furniture arrangements are for illustrative purposes only. Items are not included, nor to scale.

The items shown in this key may be subject to change, and positions could vary from those indicated on this floorplan. Please refer to Sales Advisor for details of your selected plot. Computer generated image shown overleaf. External finishes, landscaping and configuration may vary from plot to plot. Please refer to Sales Advisor for further details. All dimensions are approximate and should not be used for carpet sizes, appliance spaces or furniture. We operate a policy of continuous improvement and individual features such as kitchen and bathroom layouts, doors, windows, garages and elevational treatments may vary from time to time. Consequently these particulars should be treated as general guidance only and do not constitute a contract, part of a contract or a warranty. TA/CB/500/S00/S/01/L.



THE
ARTISAN
COLLECTION

The Thespian

THREE BEDROOM HOME

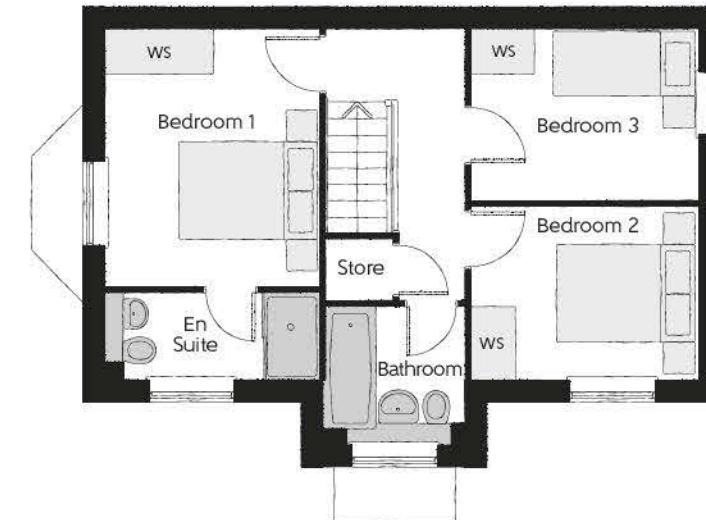


bellway.co.uk

Bellway

The Thespian

Three bedroom home



First Floor

Bedroom 1	2.95m x 3.56m	9'8" x 11'8"
Bedroom 1 En Suite	2.95m x 1.20m	9'8" x 3'11"
Bedroom 2	3.17m x 2.39m	10'5" x 7'10"
Bedroom 3	3.17m x 2.37m	10'5" x 7'9"
Bathroom	1.92m x 1.90m	6'4" x 6'3"



Ground Floor

Kitchen/Dining	3.11m x 4.85m	10'3" x 15'11"
Living Room	3.48m x 4.85m (max)	11'5" x 15'11" (max)
Cloakroom	1.92m x 0.96m	6'4" x 3'2"

Clks - Cloakroom WS - Wardrobe Space (suggestion only, wardrobe not included)

Furniture arrangements are for illustrative purposes only. Items are not included, nor to scale.

The items shown in this key may be subject to change, and positions could vary from those indicated on this floorplan. Please refer to Sales Advisor for details of your selected plot. Computer generated image shown overleaf. External finishes, landscaping and configuration may vary from plot to plot. Please refer to Sales Advisor for further details. All dimensions are approximate and should not be used for carpet sizes, appliance spaces or furniture. We operate a policy of continuous improvement and individual features such as kitchen and bathroom layouts, doors, windows, garages and elevational treatments may vary from time to time. Consequently these particulars should be treated as general guidance only and do not constitute a contract, part of a contract or a warranty. TH/CB/500/S00/D/01a/L.



THE
ARTISAN
COLLECTION

The Turner

THREE BEDROOM HOME



The Turner

Three bedroom home



First Floor

Bedroom 1	3.46m x 4.16m (max) (max)	11'4" x 13'8" (max) (max)
Bedroom 1 En Suite	1.48m x 1.96m	4'10" x 6'5"
Bedroom 2	2.15m x 3.49m	7'1" x 11'5"
Bedroom 3	2.43m x 3.51m (max) (max)	8'0" x 11'6" (max) (max)
Bathroom	2.15m x 1.92m	7'1" x 6'3"



Ground Floor

Kitchen	2.50m x 3.17m	8'3" x 10'5"
Living/Dining	4.67m x 6.25m (max)	15'4" x 20'6" (max)
Cloakroom	0.94m x 1.96m	3'1" x 6'5"

Clks - Cloakroom WS - Wardrobe Space (suggestion only, wardrobe not included)

Furniture arrangements are for illustrative purposes only. Items are not included, nor to scale.

The items shown in this key may be subject to change, and positions could vary from those indicated on this floorplan. Please refer to Sales Advisor for details of your selected plot. Computer generated image shown overleaf. External finishes, landscaping and configuration may vary from plot to plot. Please refer to Sales Advisor for further details. All dimensions are approximate and should not be used for carpet sizes, appliance spaces or furniture. We operate a policy of continuous improvement and individual features such as kitchen and bathroom layouts, doors, windows, garages and elevational treatments may vary from time to time. Consequently these particulars should be treated as general guidance only and do not constitute a contract, part of a contract or a warranty. TU/CB/500/S00/S/01/N.



THE
ARTISAN
COLLECTION

The Mason

THREE BEDROOM HOME



The Mason

Three bedroom home



First Floor

Bedroom 1	3.44m x 3.93m (max)	11'3" x 12'11" (max)
Bedroom 1 En Suite	1.98m x 1.46m	6'6" x 4'9"
Bedroom 2	2.81m x 4.09m (max)	9'3" x 13'5" (max)
Bedroom 3	2.74m x 2.74m	9'0" x 9'0"
Bathroom	2.11m x 1.91m	6'11" x 6'3"



Ground Floor

Kitchen/Family/Dining	5.64m x 6.05m (max) (max)	18'6" x 19'10" (max) (max)
Living Room	3.42m x 3.71m	11'3" x 12'2"
Utility	1.78m x 1.66m	5'10" x 5'5"
Cloakroom	0.96m x 1.91m	3'2" x 6'3"

Clks - Cloakroom WS - Wardrobe Space (suggestion only, wardrobe not included)

Furniture arrangements are for illustrative purposes only. Items are not included, nor to scale.

The items shown in this key may be subject to change, and positions could vary from those indicated on this floorplan. Please refer to Sales Advisor for details of your selected plot. Computer generated image shown overleaf. External finishes, landscaping and configuration may vary from plot to plot. Please refer to Sales Advisor for further details. All dimensions are approximate and should not be used for carpet sizes, appliance spaces or furniture. We operate a policy of continuous improvement and individual features such as kitchen and bathroom layouts, doors, windows, garages and elevational treatments may vary from time to time. Consequently these particulars should be treated as general guidance only and do not constitute a contract, part of a contract or a warranty. MA/CB/500/500/D/01/Q.



THE
ARTISAN
COLLECTION

The Chandler

THREE BEDROOM HOME



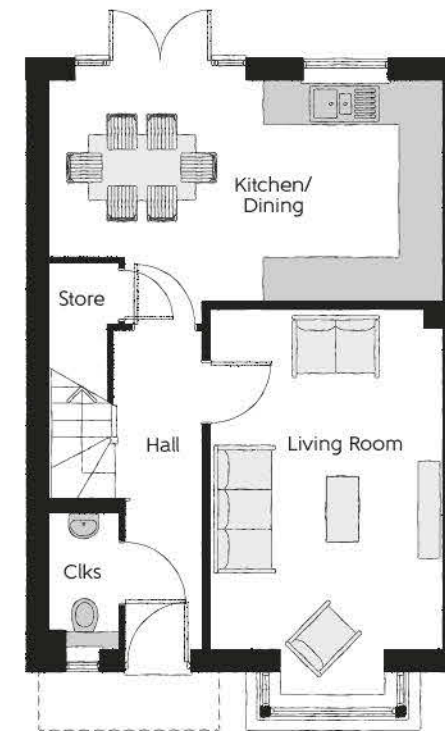
The Chandler

Three bedroom home



First Floor

Bedroom 1	3.40m x 3.02m	11'2" x 9'11"
Bedroom 1 En Suite	2.44m x 1.20m	8'0" x 3'11"
Bedroom 2	3.40m x 3.50m (max)	11'2" x 11'6" (max)
Bedroom 3	3.04m x 2.47m	10'0" x 8'1"
Bathroom	1.97m x 1.96m	6'5" x 6'5"



Ground Floor

Kitchen/Dining	5.46m x 3.39m	17'11" x 11'2"
Living Room	3.22m x 5.36m (inc. bay)	10'7" x 17'7" (inc. bay)
Cloakroom	0.95m x 1.90m	3'1" x 6'3"

Clks - Cloakroom WS - Wardrobe Space (suggestion only, wardrobe not included)

Furniture arrangements are for illustrative purposes only. Items are not included, nor to scale.

The items shown in this key may be subject to change, and positions could vary from those indicated on this floorplan. Please refer to Sales Advisor for details of your selected plot. Computer generated image shown overleaf. External finishes, landscaping and configuration may vary from plot to plot. Please refer to Sales Advisor for further details. All dimensions are approximate and should not be used for carpet sizes, appliance spaces or furniture. We operate a policy of continuous improvement and individual features such as kitchen and bathroom layouts, doors, windows, garages and elevational treatments may vary from time to time. Consequently these particulars should be treated as general guidance only and do not constitute a contract, part of a contract or a warranty. CH/CB/500/S00/S/01/M.



THE
ARTISAN
COLLECTION

The Goldsmith

FOUR BEDROOM HOME



The Goldsmith

Four bedroom home

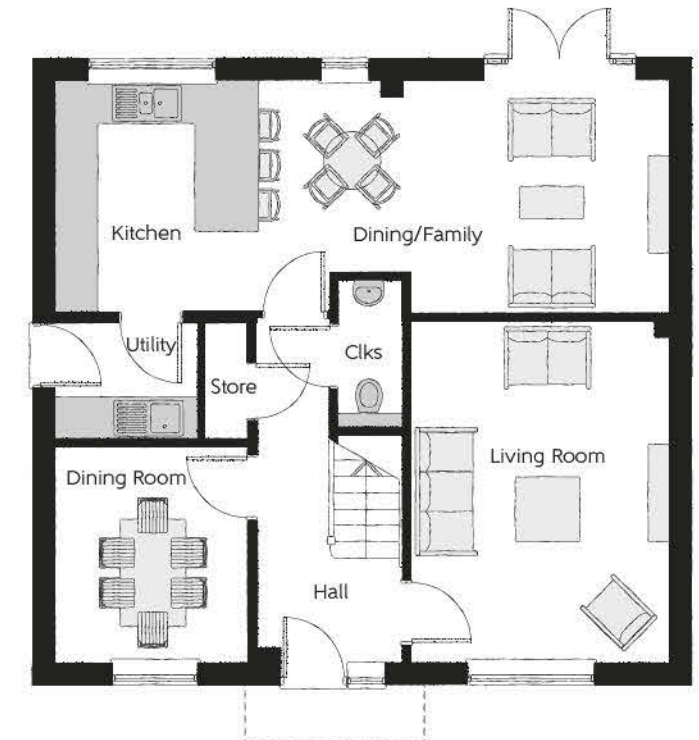


First Floor

Bedroom 1	3.65m x 4.26m (max) (max)	12'0" x 14'0" (max) (max)
Bedroom 1 En Suite	1.44m x 2.28m	4'9" x 7'6"
Bedroom 2	3.69m x 3.65m (max)	12'1" x 12'0" (max)
Bedroom 2 En Suite	2.60m x 1.53m (max)	8'6" x 5'0" (max)
Bedroom 3	2.66m x 4.38m	8'9" x 14'4"
Bedroom 4	3.65m x 2.71m	12'0" x 8'11"
Bathroom	2.08m x 2.71m (max) (max)	6'10" x 8'11" (max) (max)

Ground Floor

Kitchen/Dining/Family	8.56m x 3.22m (max)	28'1" x 10'7" (max)
Living Room	3.59m x 4.74m	11'9" x 15'7"
Dining Room	2.67m x 3.02m	8'9" x 9'11"
Utility	1.98m x 1.63m	6'6" x 5'4"
Cloakroom	0.90m x 2.06m	3'0" x 6'9"



Clks - Cloakroom WS - Wardrobe Space (suggestion only, wardrobe not included)

Furniture arrangements are for illustrative purposes only. Items are not included, nor to scale.

The items shown in this key may be subject to change, and positions could vary from those indicated on this floorplan. Please refer to Sales Advisor for details of your selected plot. Computer generated image shown overleaf. External finishes, landscaping and configuration may vary from plot to plot. Please refer to Sales Advisor for further details. All dimensions are approximate and should not be used for carpet sizes, appliance spaces or furniture. We operate a policy of continuous improvement and individual features such as kitchen and bathroom layouts, doors, windows, garages and elevational treatments may vary from time to time. Consequently these particulars should be treated as general guidance only and do not constitute a contract, part of a contract or a warranty. GO/CB/500/S00/D/01/H.



THE
ARTISAN
COLLECTION

The Bowyer

FOUR BEDROOM HOME



bellway.co.uk

Bellway

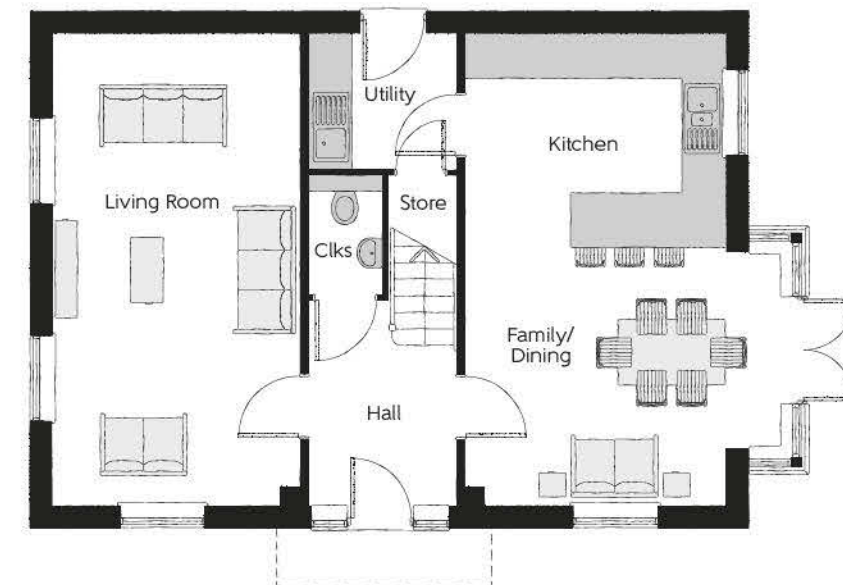
The Bowyer

Four bedroom home



First Floor

Bedroom 1	3.66m x 3.52m (max)	12'0" x 11'7" (max)
Bedroom 1 En Suite	1.44m x 2.25m	4'9" x 7'5" (max)
Bedroom 2	3.53m x 3.27m (max)	11'7" x 10'9" (max)
Bedroom 3	3.53m x 3.18m (max)	11'7" x 10'5" (max)
Bedroom 4	2.58m x 2.93m	8'6" x 9'7" (max)
Bathroom	2.35m x 2.25m (max)	7'9" x 7'5" (max)



Ground Floor

Kitchen/Dining	4.39m x 6.54m (inc. bay)	14'5" x 21'5" (inc. bay)
Living Room	3.42m x 6.54m	11'3" x 21'5"
Utility	2.03m x 1.87m	6'8" x 6'2"
Cloakroom	1.00m x 1.65m	3'3" x 5'5"

Clks - Cloakroom WS - Wardrobe Space (suggestion only, wardrobe not included)

Furniture arrangements are for illustrative purposes only. Items are not included, nor to scale.

The items shown in this key may be subject to change, and positions could vary from those indicated on this floorplan. Please refer to Sales Advisor for details of your selected plot. Computer generated image shown overleaf. External finishes, landscaping and configuration may vary from plot to plot. Please refer to Sales Advisor for further details. All dimensions are approximate and should not be used for carpet sizes, appliance spaces or furniture. We operate a policy of continuous improvement and individual features such as kitchen and bathroom layouts, doors, windows, garages and elevational treatments may vary from time to time. Consequently these particulars should be treated as general guidance only and do not constitute a contract, part of a contract or a warranty. BO/CB/500/S00/D/01/K.



THE
ARTISAN
COLLECTION

The Jeweller

FOUR BEDROOM HOME



The Jeweller

Four bedroom home

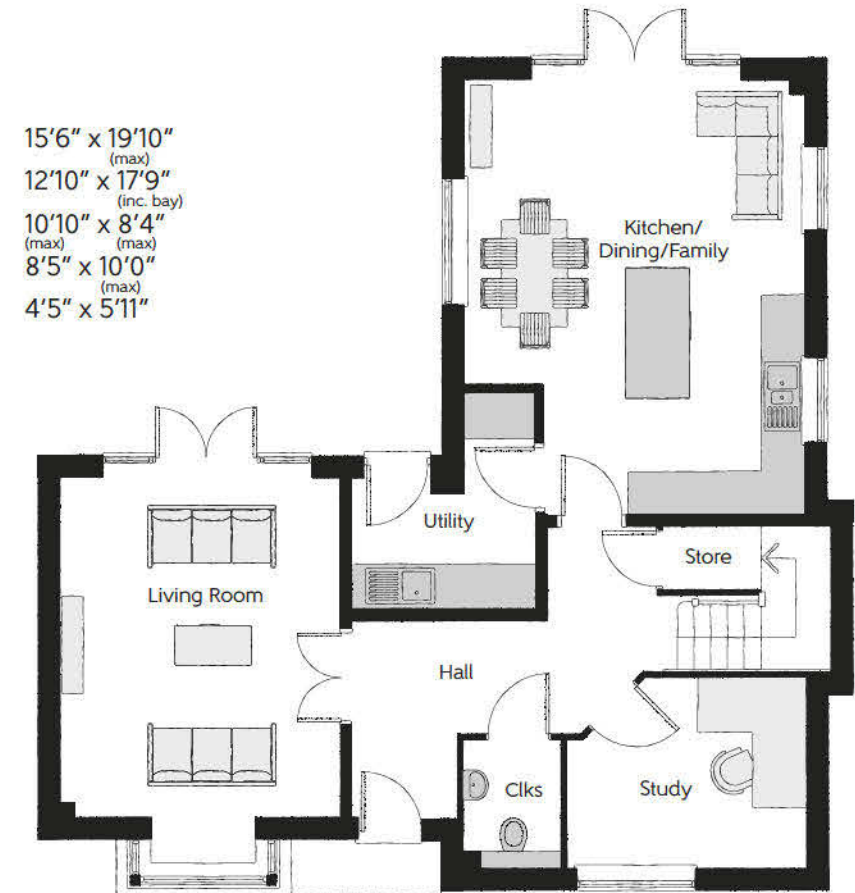
First Floor

Bedroom 1	5.54m x 2.93m (max) (max)	18'2" x 9'7" (max) (max)
Bedroom 1 En Suite	3.41m x 1.90m (max) (max)	11'2" x 6'3" (max) (max)
Dressing	2.04m x 1.72m	6'8" x 5'8"
Bedroom 2	3.44m x 5.03m (max) (max)	11'4" x 16'6" (max) (max)
Bedroom 2 En Suite	1.20m x 3.14m	3'11" x 10'3"
Bedroom 3	4.74m x 2.61m (max) (max)	15'6" x 8'7" (max) (max)
Bedroom 4	2.94m x 2.88m	9'8" x 9'5"
Bathroom	2.37m x 1.90m	7'9" x 6'3"



Ground Floor

Kitchen/Dining/Family	4.74m x 6.04m (max) (max)	15'6" x 19'10" (max) (max)
Living Room	3.91m x 5.42m (inc. bay) (max)	12'10" x 17'9" (inc. bay) (max)
Study	3.31m x 2.55m (max) (max)	10'10" x 8'4" (max) (max)
Utility	2.57m x 3.04m (max) (max)	8'5" x 10'0" (max) (max)
Cloakroom	1.34m x 1.81m	4'5" x 5'11"



Clks - Cloakroom WS - Wardrobe Space (suggestion only, wardrobe not included)

Furniture arrangements are for illustrative purposes only. Items are not included, nor to scale.

The items shown in this key may be subject to change, and positions could vary from those indicated on this floorplan. Please refer to Sales Advisor for details of your selected plot. Computer generated image shown overleaf. External finishes, landscaping and configuration may vary from plot to plot. Please refer to Sales Advisor for further details. All dimensions are approximate and should not be used for carpet sizes, appliance spaces or furniture. We operate a policy of continuous improvement and individual features such as kitchen and bathroom layouts, doors, windows, garages and elevational treatments may vary from time to time. Consequently these particulars should be treated as general guidance only and do not constitute a contract, part of a contract or a warranty. JE/CB/500/S00/D/01/C.



THE
ARTISAN
COLLECTION

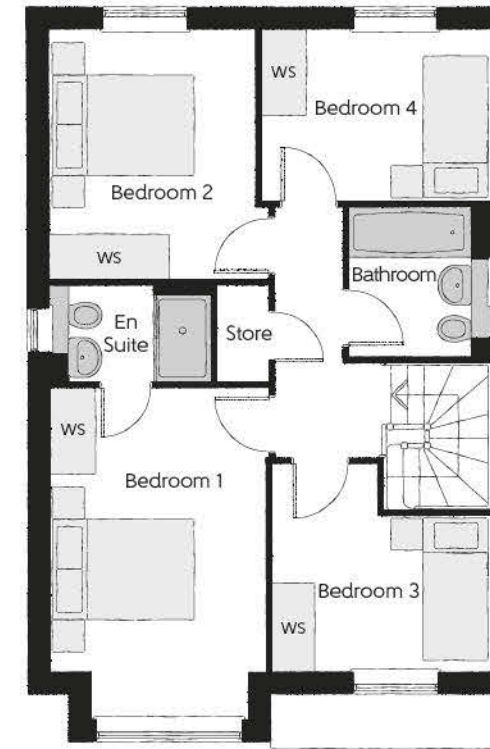
The Scrivener

FOUR BEDROOM HOME



The Scrivener

Four bedroom home



First Floor

Bedroom 1	2.96m x 4.59m (inc. bay)	9'9" x 15'1" (inc. bay)
Bedroom 1 En Suite	2.22m x 1.35m	7'4" x 4'5"
Bedroom 2	2.83m x 3.46m	9'3" x 11'4"
Bedroom 3	3.03m x 2.87m (max)	9'11" x 9'5" (max)
Bedroom 4	3.17m x 2.38m	10'5" x 7'10"
Bathroom	1.91m x 2.08m	6'3" x 6'10"



Ground Floor

Kitchen	3.20m x 3.33m	10'6" x 10'11"
Family/Dining	2.88m x 4.48m	9'6" x 14'8"
Living Room	3.54m x 4.94m (inc. bay)	11'7" x 16'3" (inc. bay)
Utility	1.84m x 1.71m	6'0" x 5'7"
Cloakroom	0.97m x 2.08m	3'2" x 6'10"

Clks - Cloakroom WS - Wardrobe Space (suggestion only, wardrobe not included)

Furniture arrangements are for illustrative purposes only. Items are not included, nor to scale.

The items shown in this key may be subject to change, and positions could vary from those indicated on this floorplan. Please refer to Sales Advisor for details of your selected plot. Computer generated image shown overleaf. External finishes, landscaping and configuration may vary from plot to plot. Please refer to Sales Advisor for further details. All dimensions are approximate and should not be used for carpet sizes, appliance spaces or furniture. We operate a policy of continuous improvement and individual features such as kitchen and bathroom layouts, doors, windows, garages and elevational treatments may vary from time to time. Consequently these particulars should be treated as general guidance only and do not constitute a contract, part of a contract or a warranty. SC/CB/500/S00/D/01/N.

			1 & 2 Bedroom Homes	3 Bedroom Homes	4 Bedroom Homes
FINISHES	Loft Hatch	Loft Hatch - Hinged Drop Down ** ††	●	●	●
	Entrance Doors	GRP Insulated Door	●	●	●
	Ceilings	Crown White Matt Emulsion	●	●	●
	Walls	Crown White Matt Emulsion	●	●	●
	Floors	Concrete Ground Floor / Chipboard First Floor	●	●	●
	Window Cills	White Satin MDF	●	●	●
	Stairs	Timber Stair - White Satin MDF Strings	●	●	●
	Balusters	White Satin Stop Chamfered Balusters	●	●	●
		White Satin Turned Balusters	●	●	●
	Newel Posts	White Satin Stop Chamfered Newels	●	●	●
	Newel Caps	White Satin Flat Top Newel Caps	●	●	●
	Handrail	White Satin Heavy Duty Handrail	●	●	●
	Skirting	White Satin 94x14 MDF Grooved & Chamfered	●	●	●
		White Satin 120x14 MDF Grooved & Chamfered	●	●	●
	Architrave	White Satin 69x18 MDF Grooved & Chamfered	●	●	●
	Internal Doors	White Pre Finished Vertical Panel Internal Doors	●	●	●
	Ironmongery	Chrome SRI00 Door Furniture	●	●	●
KITCHEN	Frontals	Bellway Band B options ~	●	●	●
		Bellway Band C options ~	●	●	●
	Carcass	Premium Grade 18mm thk Colour Matched Carcass	●	●	●
	Units	Frontal Matching Table Ends	●	●	●
		Unit Framing	●	●	●
	Worktops	40mm Square Edge Worktops with upstand	●	●	●
	Kitchen Sink	Leisure Eaton Single Bowl SS Sink & Aquamono Tap (inc Sink Liner)	●	●	●
		Leisure Eaton Bowl & Half SS Sink & Aquamono Tap (inc Sink Liner)	●	●	●
		Leisure Albion Bowl & Half SS Sink & Aquamono Tap (inc Sink Liner)	●	●	●
	Utility Sink	Leisure Eaton Single Bowl SS Sink & Aquamono Tap (inc Sink Liner)	●	●	●
		Leisure Albion Single Bowl SS Sink & Aquamono Tap (inc Sink Liner)	●	●	●
	Appliances Oven	Zanussi Single Oven ZOHHE2X2	●	●	●
		Zanussi Single Oven ZOHNX3X1	●	●	●
	Appliances Hob	Zanussi 4 Burner Gas Hob ZGNN640X & SS Splashback	●	●	●
		Zanussi 4 Burner Gas Hob ZGNN642X & SS Splashback	●	●	●
	Appliances Extractor	Cooker Hood Extractor LFC316X	●	●	●
WET ROOMS	Appliances Microwave	Zanussi Combination Microwave ZVENM6X1	●	●	●
	Appliances Fridge Freezer	Fridge Freezer Space Only	●	●	●
		Zanussi 70/30 Fridge Freezer ZNLN18FS1	●	●	●
	Appliance Dishwasher	Removeable Unit (inc Feed & Waste) ‡	●	●	●
		Zanussi Dishwasher ZDLN1511	●	●	●
	Appliance Washing Machine	Washing Machine Space Only (inc Feed & Waste)	●	●	●
	Cloaks - WC	Roca DEBBA WC with Concealed Cistern & PL2 Flush Plate ^	●	●	●
	Cloaks - Basin	Roca Wash Hand Basin ‡‡‡	●	●	●
	Cloaks - Brassware	Bristan PISA Small Basin Chrome Mixer Tap	●	●	●
	Cloaks - Tiling	Band 2 Tiling to WC Boxing, Splashback Tiling to WHB, Flat Edge White Trim	●	●	●
		Band 3 Tiling to WC Boxing, Splashback Tiling to WHB, Flat Edge Chrome Trim	●	●	●
	Bathroom - WC	Roca DEBBA WC with Concealed Cistern & PL2 Flush Plate ^	●	●	●
	Bathroom - Basin	Roca DEBBA 500 WHB with Full Pedestal ###	●	●	●
		Roca DEBBA 550 WHB with Semi Pedestal ###	●	●	●
	Bathroom - Bath	Roca OSLO Acrylic Bath & Rigid Bath Panel	●	●	●
	Bathroom - Brassware	Bristan PISA Chrome Bath & Basin Mixer Taps	●	●	●
WET ROOMS		Bristan SAIL Chrome Bath & Basin Mixer Taps	●	●	●
	Bathroom - Shower Tray	Mira FLIGHT Low Shower Tray with Mira ELEVATE Enclosure ‡‡‡	●	●	●
	Bathroom - Shower	Mira MINIMAL Single Thermostatic Shower ^^	●	●	●
		Mira MINIMAL Single Thermostatic Shower ~ ~	●	●	●

WET ROOMS	Bathroom - Tiling	1/2 Height Tiling (Band 2) to Wet Walls with Flat Edged White Trim *** †††	●	●	●
		1/2 Height Tiling (Band 3) to Wet Walls with Flat Edged Chrome Trim *** †††	●	●	●
	En-Suite - WC	Roca DEBBA WC with Concealed Cistern & PL2 Flush Plate ^	●	●	●
	En-Suite - Basin	Roca DEBBA 450 WHB with Full Pedestal	●	●	●
		Roca DEBBA 550 WHB with Semi Pedestal	●	●	●
	En-Suite - Brassware	Bristan PISA Chrome Bath & Basin Mixer Taps	●	●	●
		Bristan SAIL Chrome Bath & Basin Mixer Taps	●	●	●
	En-Suite - Shower Tray	Mira FLIGHT Low Shower Tray with Mira ELEVATE Enclosure ‡‡‡	●	●	●
MECHANICAL	En-Suite - Shower	Mira MINIMAL Single Thermostatic Shower ‡‡	●	●	●
	En-Suite - Tiling	1/2 Height Tiling (Band 2) to Wet Walls with Flat Edged White Trim †††	●	●	●
		1/2 Height Tiling (Band 3) to Wet Walls with Flat Edged Chrome Trim †††	●	●	●
	Boiler	Ideal LOGIC Combination Boiler (Cb)	●	●	●
		Ideal LOGIC Boiler & ThermaQ Evocyl HW Cylinder (Hob)	●	●	●
	Controls	Dual Zoned 3 way Heating Programmer & Room Thermostat Cb	●	●	●
		Dual Zoned 3 way Heating Programmer & Room Thermostat HOb	●	●	●
	Radiators	Stelrad Compact Steel Panel Radiators with Grilles	●	●	●
ELECTRICS	Towel Warmers	Flat Chrome to Bathroom Only	●	●	●
	Ventilation	Window Trickle Ventilators with Mechanical Extract Fans (system 1)	●	●	●
	Home Working	Dedicated Power, USB & Data points	●	●	●
	Safety - Heat	Heat Detector DET ~ ~ ~	●	●	●
	Safety - Fire	Optical Smoke Detectors LD2 D2 DET	●	●	●
	Safety - Carbon	Fireblitz FHCO-BH Carbon Monoxide Detector	●	●	●
	Consumer Unit	Wylex Consumer Unit	●	●	●
	Sockets & Switches	Electrium CASA White Fittings	●	●	●
EXTERNALS & MISC	USB Locations	Kitchen, Living Room & Bedroom 1 ONLY	●	●	●
	Shaver / Toothbrush Point	Bathroom ONLY	●	●	●
	Lighting	Pendant Fitting to Habitable Rooms	●	●	●
	Lighting - Kitchen	White Recessed Spot Lights	●	●	●
		Polished Chrome Recessed Spot Lights	●	●	●
	Lighting - Bathroom & En-Suites	White Recessed Spot Lights	●	●	●
		Polished Chrome Recessed Spot Lights	●	●	●
	Lighting - External	External Light Clifton Brushed Steel Up/Down (Front & Rear)	●	●	●
EXTERNALS & MISC	Communications - TV	TV Point to Living Room, Family, Bedroom 1 & Study	●	●	●
	Communications - Voice	Telephone Point to Living Room	●	●	●
	Communications - Data	Cat 6 Network Point to Living Room, Family, Bedroom 1 & Study	●	●	●
	Communications - Satellite	Dual Connection Satellite Points to Living Room	●	●	●
	Broadband	Ultrafast Fibre Connectivity Openreach	●	●	●
	Build Method	Masonry #	●	●	●
	Ecological	Hedgehog Highway fencing adaption	●	●	●
	Garages Electrics	Light & Power Point to Incurltillage Garages #	●	●	●
EXTERNALS & MISC	Maintenance	External Tap	●	●	●
	Number Plaque	Artisan Number Plaque	●	●	●
	Footpath & Patio	Grey PCC Flags 450x450x32's	●	●	●
	Garages	Steel Panel Up & Over Canopy Garage Door #	●	●	●
	Drives	Bitmac Black ^^^	●	●	●
	Landscaping - Front	Medallon Turf & Landscape Planting ##	●	●	●
	Landscaping - Rear	Rotovated Topsoil ##	●	●	●
	EV Charging Terminal	Universal Socket 7kW * †	●	●	●

* refer site layout

** fire rated as necessary

*** full height around bath where shower provided as standard

† electrical infrastructure upgrade maybe required

†† where layout allows

††† full height to shower enclosure

‡ at build stage

‡‡ flow regulator fitted to bath mixer if serving single thermostatic shower & fed via combination boiler

‡‡‡ housetype dependent

^ inc soft close mechanism seat on 4 & 5 Bedroom Homes ONLY

^^ over bath ONLY incorporating MIRA bath screen 1.1863.004 where no shower elsewhere in dwelling

^^^ plot dependent

plot specific, refer site layout

refer site landscape layout

semi recessed basin if AD M4(ii) applicable

~ soft close mechanism to doors & drawers

~ ~ where provision of shower tray allows

~ ~ ~ where shown on layouts

Information correct at time of going to print. In the event of product discontinuation or issues with stock availability Bellway will always fit a suitable alternative. Specification for Kingsmere Park Phase 1 only.

Make your new home as individual as you are with Additions



Every Bellway home comes with high quality fittings as standard, but to add that personal touch you can also choose to upgrade from our range of options to make sure your new home feels distinctly different.

Most important of all, because we recognise that you want your new home to reflect your personal taste from day one, we will make sure that all your Additions choices are expertly fitted and finished by the time you move in.

Choose from our range of Additions options covering:

Kitchens

- Integrated or freestanding washer/dryer
- Integrated fridge/freezer
- Integrated dishwasher
- Integrated or freestanding washing machine
- Upgrade to composite worktops
- Double oven
- Upgrade hob
- Integrated microwave

Flooring

- Choose from carpets, vinyl or Amtico

Tiling

- Full and half height tiling
- Comprehensive upgrade options

Plumbing

- Heated towel rail

Security

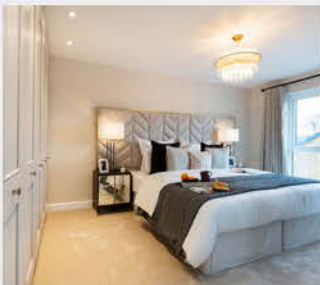
- Intruder alarms
- Security lights

Electrical

- Additional sockets
- Additional switches
- Chrome sockets
- Chrome switches
- Under-unit lighting
- Shaver socket
- Recessed lighting
- BT and TV points
- External sockets

Miscellaneous

- Turf
- Wardrobes





How to find us

