



# PERCEVAL GRANGE

MIDHURST

Perceval Grange is a development of 2, 3, 4, and 5-bedroom homes,  
located in Midhurst, West Sussex.

**Bellway**





# At the heart of nature and community

## Where countryside charm meets modern living

Situated on the outskirts of Midhurst, Perceval Grange enjoys an expanse of natural beauty on its doorstep, with the stunning landscapes and wildlife of the adjacent South Downs National Park rolling away in all directions. From leisurely walks and horseback riding along the South Downs Way to boating and fishing on the River Rother, outdoor enthusiasts will find endless opportunities to connect with nature.

Just a five-minute cycle ride away, Midhurst’s vibrant town centre awaits, boasting a variety of independent shopping along West Street, Red Lion Street and more. Additionally, the regular Midhurst Farmers and Artisan Market and the Midhurst Vintage Fair add a unique charm.

Food and drink options abound, with a great selection of independent cafés, country pubs, and fine dining establishments offering everything from local pub grub to delicious tapas. For leisure, Cowdray Park Golf Club is a six-minute drive away and features a year-round 18-hole course set amidst spectacular scenery. Alternatively, Grange Community & Leisure Centre and Midhurst Rother College with its climbing wall provide ample facilities for sports and fitness enthusiasts – both within seven minutes

by bike. Indulgence is also just a step away at the Spread Eagle Hotel & Spa, where you’ll find a beautiful pool, spa garden and treatment rooms.

If you’re craving some culture, learn all about local history at the charming Midhurst Museum – possibly the smallest museum in the world; take a relaxing stroll around the pristine Wollbeding Gardens; or enjoy an afternoon’s wine tasting at Upperton Vineyard and Stopham Estate. Families at Perceval Grange benefit from proximity to reputable schools such as Midhurst Church of England Primary School and Midhurst Rother College secondary school and sixth form.

Further afield, the neighbouring town of Chichester and the famous Goodwood Estate are a 20-minute drive away and make a fantastic day out for all the family.

Travel is made easy with the A272, which offers an easy route south to the coast and north to join the A3 motorway, which continues all the way into south London, passing the M25 on the way. Alternatively, Haslemere Station is 17 minutes away by road and operates direct train services to London Waterloo in 55 minutes.

# A place to call home

## Attractive homes that are designed for life

Perceval Grange is a beautiful collection of 2, 3 and 5-bedroom homes in Midhurst, West Sussex. Inspired by the local Tudor architecture, this attractive new community is nestled adjacent to scenic woodland and rolling countryside, yet just minutes from the vibrant town centre. Such a perfect balance is ideal for families,

downsizers and commuters alike. Each home at Perceval Grange has been designed and built to maximise space, versatility and energy efficiency, offering a sustainable place to live that will fit around our lifestyle for generations to come.









# Development plan

## 2 Bedroom Homes

 The Bepton  
Plots 58, 59, 60, 61, 62, 63 & 64

## 3 Bedroom Homes

 The Lambert  
Plots 1, 20 & 29

 The Holmbush  
Plot 6, 8 & 21

 The Orchard  
Plots 10, 13 & 16

 The St Anne  
Plots 11 & 12

 The St Margaret  
Plot 14

 The Oakwood  
Plots 47, 48, 49, 50, 51, 52, 55 & 56

 The Grange  
Plots 46, 54 & 57

 The Ashfield  
Plots 2 & 3

 The Carron  
Plots 19 & 28

 The Cobden  
Plot 4

 The Guillard  
Plots 5 & 9

 The Heatherwood  
Plot 53

 The Forterra  
Plot 15

## 4 Bedroom Homes

 The Downsview  
Plots 18 & 30

## 5 Bedroom Homes

 The Heathfield  
Plots 17, 22 & 31

## 2-3 Bedroom Homes

 Affordable Homes



**Key to plan**

- v Visitor parking
- bcp Bin collection point
- SuDS Sustainable drainage system
- c/p Carport

The site plan is drawn to show the relative position of individual properties. NOT TO SCALE. This is a two dimensional drawing and will not show land contours and gradients, boundary treatments, landscaping or local authority street lighting. Footpaths subject to change. For details of individual properties and availability please refer to our Sales Advisor.





# The Bepton

TWO BEDROOM HOME



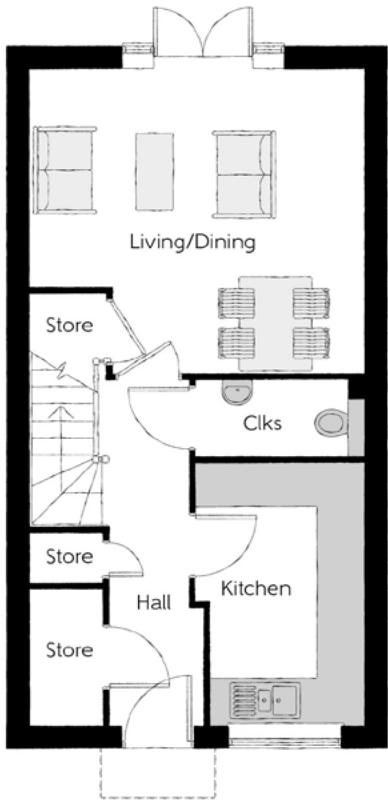
The Bepton

Two bedroom home



First Floor

Bedroom 1	4.04m x 3.02m <small>(max)</small>	13'2" x 9'11" <small>(max)</small>
Bedroom 1 En Suite	2.37m x 1.40m	7'9" x 4'7"
Bedroom 2	4.64m x 2.86m	15'2" x 9'4"
Bathroom	2.37m x 1.50m	7'9" x 4'11"



Ground Floor

Kitchen	3.63m x 2.34m	11'10" x 7'7"
Living/Dining	4.64m x 4.21m	15'2" x 13'9"
Cloakroom	2.34m x 1.05m	7'7" x 3'5"

Clks - Cloakroom    WS - Wardrobe Space (suggestion only, wardrobe not included)    W - Fitted Wardrobe

**Furniture arrangements are for illustrative purposes only. Items are not included, nor to scale.**  
The items shown in this key may be subject to change, and positions could vary from those indicated on this floorplan. Please refer to Sales Advisor for details of your selected plot. Computer generated image shown overleaf. External finishes, landscaping and configuration may vary from plot to plot. Please refer to Sales Advisor for further details. All dimensions are approximate and should not be used for carpet sizes, appliance spaces or furniture. We operate a policy of continuous improvement and individual features such as kitchen and bathroom layouts, doors, windows, garages and elevational treatments may vary from time to time. Consequently these particulars should be treated as general guidance only and do not constitute a contract, part of a contract or a warranty.





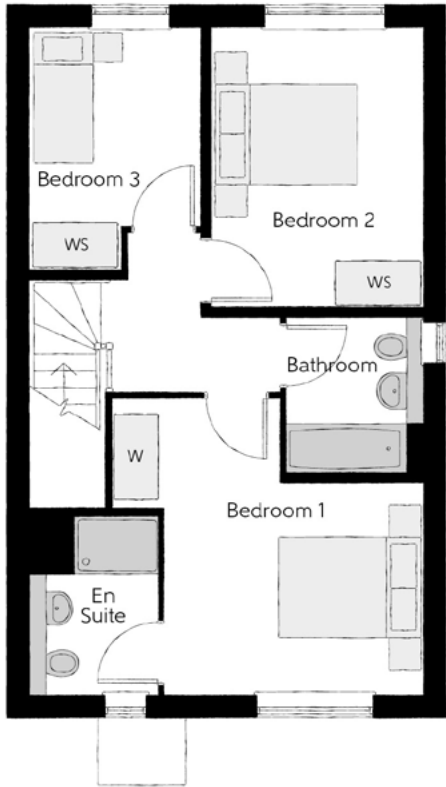
# The St Anne

THREE BEDROOM HOME



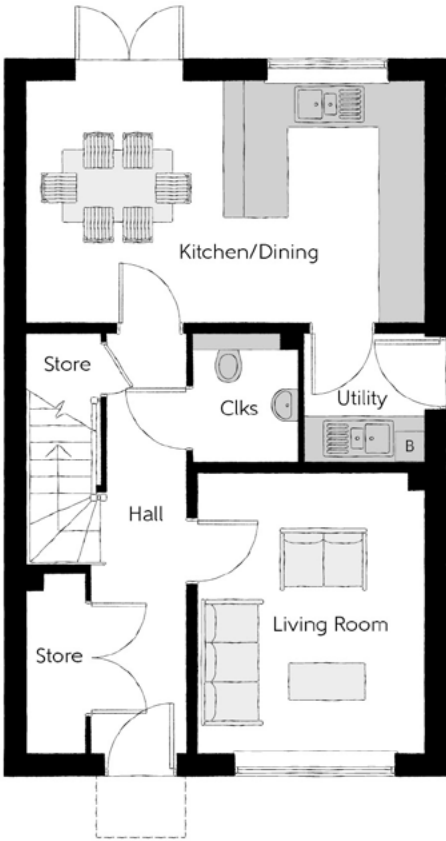
## The St Anne

Three bedroom home



### First Floor

Bedroom 1	4.17m x 3.64m	13'8" x 11'11"
Bedroom 1 En Suite	2.50m x 1.80m	8'2" x 5'10"
Bedroom 2	3.92m x 2.97m	12'10" x 9'8"
Bedroom 3	3.39m x 2.44m	11'1" x 8'0"
Bathroom	2.20m x 1.94m	7'2" x 6'4"



### Ground Floor

Kitchen/Dining	5.54m x 3.37m	18'1" x 11'0"
Living Room	3.89m x 3.17m	12'9" x 10'4"
Cloakroom	1.80m x 1.47m	5'10" x 4'9"
Utility	1.68m x 1.80m	5'6" x 5'10"

B - Boiler Clks - Cloakroom WS - Wardrobe Space (suggestion only, wardrobe not included) W - Fitted Wardrobe

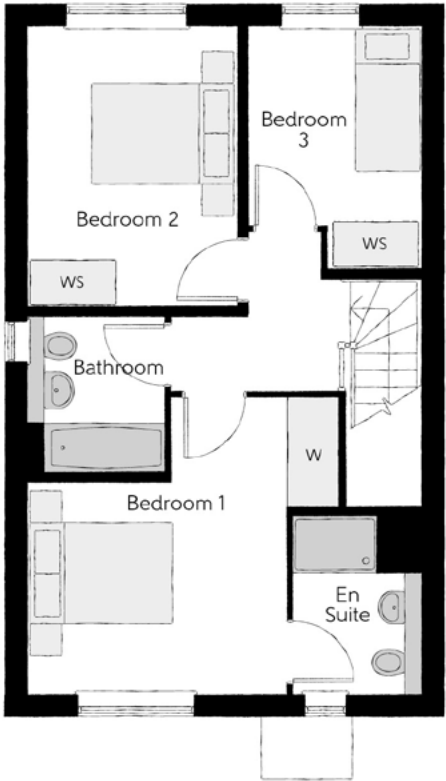
**Furniture arrangements are for illustrative purposes only. Items are not included, nor to scale.**  
The items shown in this key may be subject to change, and positions could vary from those indicated on this floorplan. Please refer to Sales Advisor for details of your selected plot. Computer generated image shown overleaf. External finishes, landscaping and configuration may vary from plot to plot. Please refer to Sales Advisor for further details. All dimensions are approximate and should not be used for carpet sizes, appliance spaces or furniture. We operate a policy of continuous improvement and individual features such as kitchen and bathroom layouts, doors, windows, garages and elevational treatments may vary from time to time. Consequently these particulars should be treated as general guidance only and do not constitute a contract, part of a contract or a warranty.





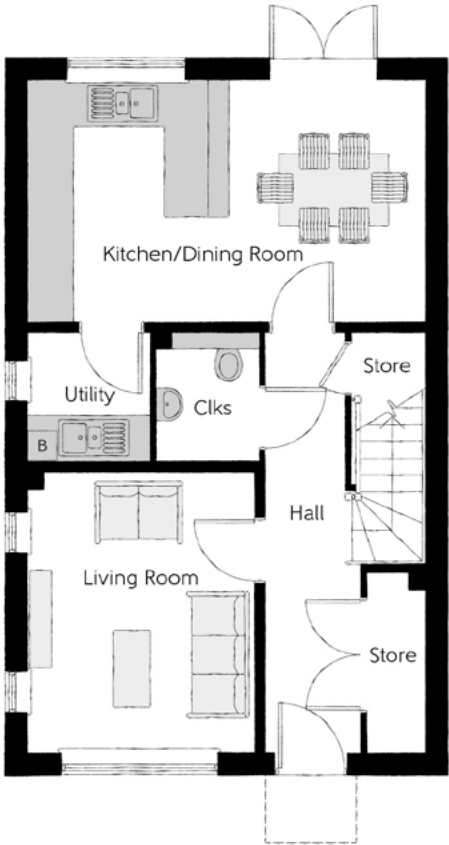
# The Lambert

THREE BEDROOM HOME



First Floor

Bedroom 1	4.42m x 4.17m (max)	14'6" x 13'8" (max)
Bedroom 1 En Suite	2.50m x 1.80m	8'2" x 5'10"
Bedroom 2	3.92m x 2.92m	12'10" x 9'7"
Bedroom 3	3.39m x 2.48m	11'1" x 8'1"
Bathroom	2.20m x 1.94m	7'2" x 6'4"



Ground Floor

Kitchen/Dining Room	5.54m x 3.43m	18'1" x 11'2"
Living Room	3.95m x 3.23m	12'11" x 10'7"
Cloakroom	1.46m x 1.80m	4'9" x 5'10"

B - Boiler Clks - Cloakroom WS - Wardrobe Space (suggestion only, wardrobe not included) W - Fitted Wardrobe

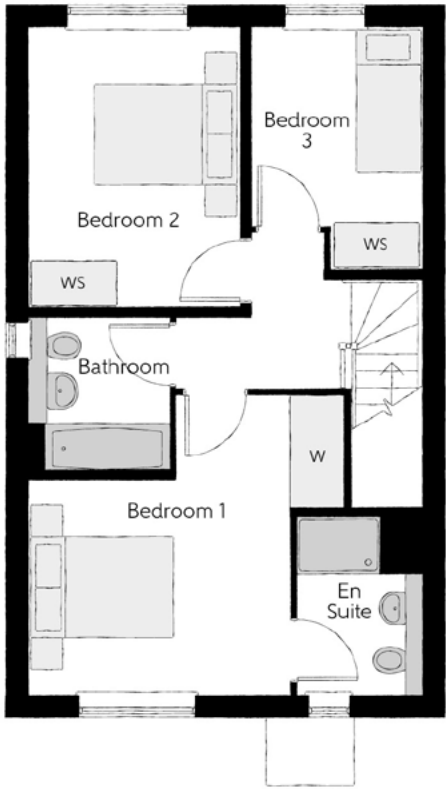
**Furniture arrangements are for illustrative purposes only. Items are not included, nor to scale.**  
The items shown in this key may be subject to change, and positions could vary from those indicated on this floorplan. Please refer to Sales Advisor for details of your selected plot. Computer generated image shown overleaf. External finishes, landscaping and configuration may vary from plot to plot. Please refer to Sales Advisor for further details. All dimensions are approximate and should not be used for carpet sizes, appliance spaces or furniture. We operate a policy of continuous improvement and individual features such as kitchen and bathroom layouts, doors, windows, garages and elevational treatments may vary from time to time. Consequently these particulars should be treated as general guidance only and do not constitute a contract, part of a contract or a warranty.





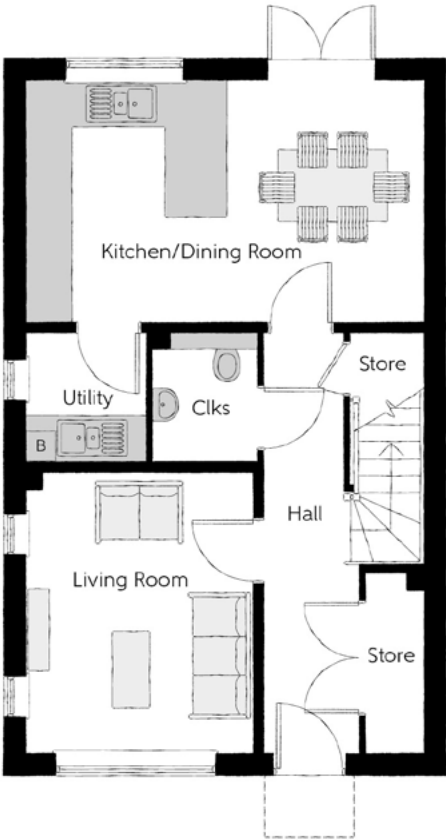
# The Orchard

THREE BEDROOM HOME



### First Floor

Bedroom 1	4.38m x 4.17m	14'4" x 13'8"
Bedroom 1 En Suite	2.50m x 1.80m	8'2" x 5'10"
Bedroom 2	3.92m x 2.92m	12'10" x 9'7"
Bedroom 3	3.39m x 2.48m	11'1" x 8'1"
Bathroom	2.20m x 1.94m	7'2" x 6'4"



### Ground Floor

Kitchen/Dining Room	5.54m x 3.37m	18'1" x 11'0"
Living Room	3.89m x 3.17m	12'9" x 10'4"
Cloakroom	1.46 x 1.80m	4'9" x 5'10"

B - Boiler Clks - Cloakroom WS - Wardrobe Space (suggestion only, wardrobe not included) W - Fitted Wardrobe

**Furniture arrangements are for illustrative purposes only. Items are not included, nor to scale.**  
The items shown in this key may be subject to change, and positions could vary from those indicated on this floorplan. Please refer to Sales Advisor for details of your selected plot. Computer generated image shown overleaf. External finishes, landscaping and configuration may vary from plot to plot. Please refer to Sales Advisor for further details. All dimensions are approximate and should not be used for carpet sizes, appliance spaces or furniture. We operate a policy of continuous improvement and individual features such as kitchen and bathroom layouts, doors, windows, garages and elevational treatments may vary from time to time. Consequently these particulars should be treated as general guidance only and do not constitute a contract, part of a contract or a warranty.





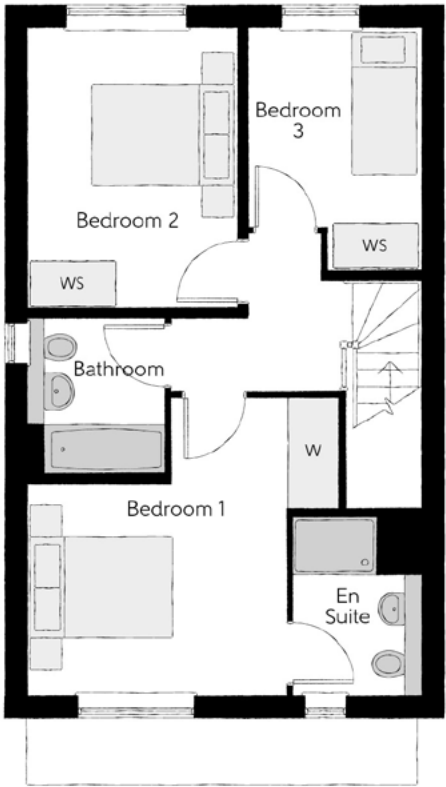
# The St Margaret

THREE BEDROOM HOME



The St Margaret

Three bedroom home



### First Floor

Bedroom 1	4.38m x 4.17m	14'5" x 13'8"
Bedroom 1 En Suite	2.50m x 1.80m	8'2" x 5'10"
Bedroom 2	3.92m x 2.92m	12'10" x 9'7"
Bedroom 3	3.39m x 2.48m	11'1" x 8'1"
Bathroom	2.20m x 1.94m	7'2" x 6'4"



### Ground Floor

Kitchen/Dining	5.54m x 3.37m	18'1" x 11'0"
Living Room	3.89m x 3.17m	12'9" x 10'4"
Cloakroom	1.80m x 1.46m	5'10" x 4'9"
Utility	1.68m x 1.81m	5'6" x 5'11"

B - Boiler Clks - Cloakroom WS - Wardrobe Space (suggestion only, wardrobe not included) W - Fitted Wardrobe

**Furniture arrangements are for illustrative purposes only. Items are not included, nor to scale.**  
The items shown in this key may be subject to change, and positions could vary from those indicated on this floorplan. Please refer to Sales Advisor for details of your selected plot. Computer generated image shown overleaf. External finishes, landscaping and configuration may vary from plot to plot. Please refer to Sales Advisor for further details. All dimensions are approximate and should not be used for carpet sizes, appliance spaces or furniture. We operate a policy of continuous improvement and individual features such as kitchen and bathroom layouts, doors, windows, garages and elevational treatments may vary from time to time. Consequently these particulars should be treated as general guidance only and do not constitute a contract, part of a contract or a warranty.





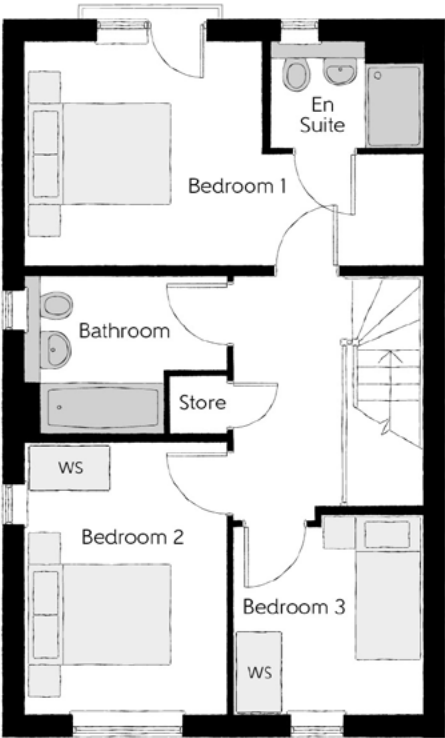
# The Oakwood

THREE BEDROOM HOME



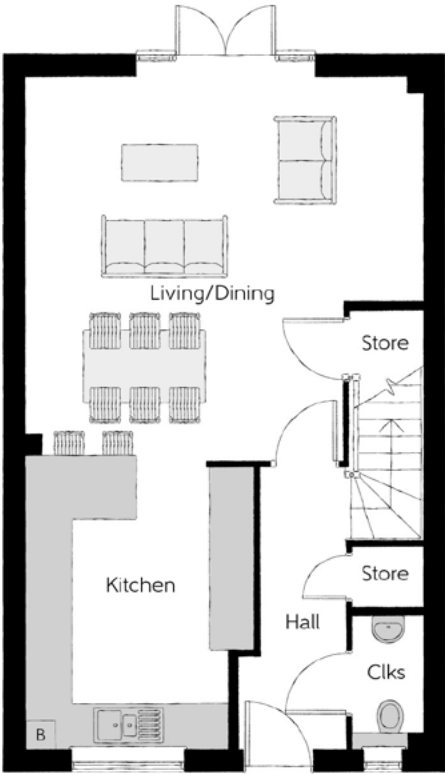
The Oakwood

Three bedroom home



First Floor

Bedroom 1	4.94m x 3.11m (max)	16'2" x 10'2" (max)
Bedroom 1 En Suite	1.48m x 1.31m	4'10" x 4'3"
Bedroom 2	2.78m x 3.79m	9'1" x 12'5"
Bedroom 3	2.62m x 2.78m	8'7" x 9'1"
Bathroom	2.82m x 2.20m	9'3" x 7'2"



Ground Floor

Kitchen	3.18m x 3.94m	10'5" x 12'11"
Living/Dining	5.54m x 5.33m	18'1" x 17'5"
Cloakroom	1.00m x 1.85m	3'3" x 6'0"

B - Boiler Clks - Cloakroom WS - Wardrobe Space (suggestion only, wardrobe not included) W - Fitted Wardrobe

**Furniture arrangements are for illustrative purposes only. Items are not included, nor to scale.**  
The items shown in this key may be subject to change, and positions could vary from those indicated on this floorplan. Please refer to Sales Advisor for details of your selected plot. Computer generated image shown overleaf. External finishes, landscaping and configuration may vary from plot to plot. Please refer to Sales Advisor for further details. All dimensions are approximate and should not be used for carpet sizes, appliance spaces or furniture. We operate a policy of continuous improvement and individual features such as kitchen and bathroom layouts, doors, windows, garages and elevational treatments may vary from time to time. Consequently these particulars should be treated as general guidance only and do not constitute a contract, part of a contract or a warranty.





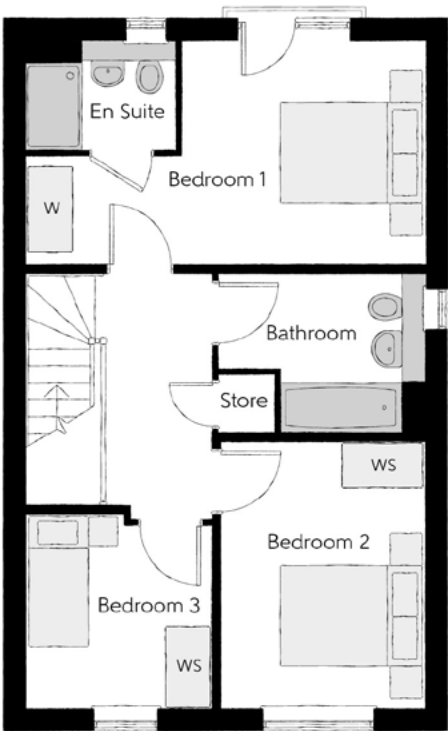
# The Grange

THREE BEDROOM HOME



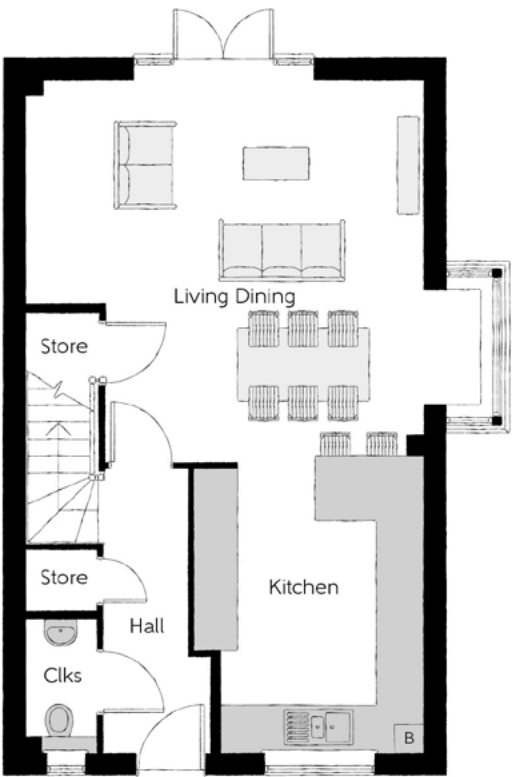
The Grange

Three bedroom home



First Floor

Bedroom 1	5.54m x 3.12m (max)	18'1" x 10'2" (max)
Bedroom 1 En Suite	2.10m x 1.48m	6'10" x 4'10"
Bedroom 2	2.78m x 3.79m	9'1" x 12'5"
Bedroom 3	2.62m x 2.78m	8'7" x 9'1"
Bathroom	2.82m x 2.20m	9'3" x 7'2"



Ground Floor

Kitchen	3.94m x 3.18m	12'11" x 10'5"
Living/Dining	5.54m x 5.33m	18'1" x 17'5"
Cloakroom	1.85m x 1.00m	6'0" x 3'3"

B - Boiler Clks - Cloakroom WS - Wardrobe Space (suggestion only, wardrobe not included) W - Fitted Wardrobe

**Furniture arrangements are for illustrative purposes only. Items are not included, nor to scale.**  
The items shown in this key may be subject to change, and positions could vary from those indicated on this floorplan. Please refer to Sales Advisor for details of your selected plot. Computer generated image shown overleaf. External finishes, landscaping and configuration may vary from plot to plot. Please refer to Sales Advisor for further details. All dimensions are approximate and should not be used for carpet sizes, appliance spaces or furniture. We operate a policy of continuous improvement and individual features such as kitchen and bathroom layouts, doors, windows, garages and elevational treatments may vary from time to time. Consequently these particulars should be treated as general guidance only and do not constitute a contract, part of a contract or a warranty.





# The Ashfield

THREE BEDROOM HOME



The Ashfield

Three bedroom home

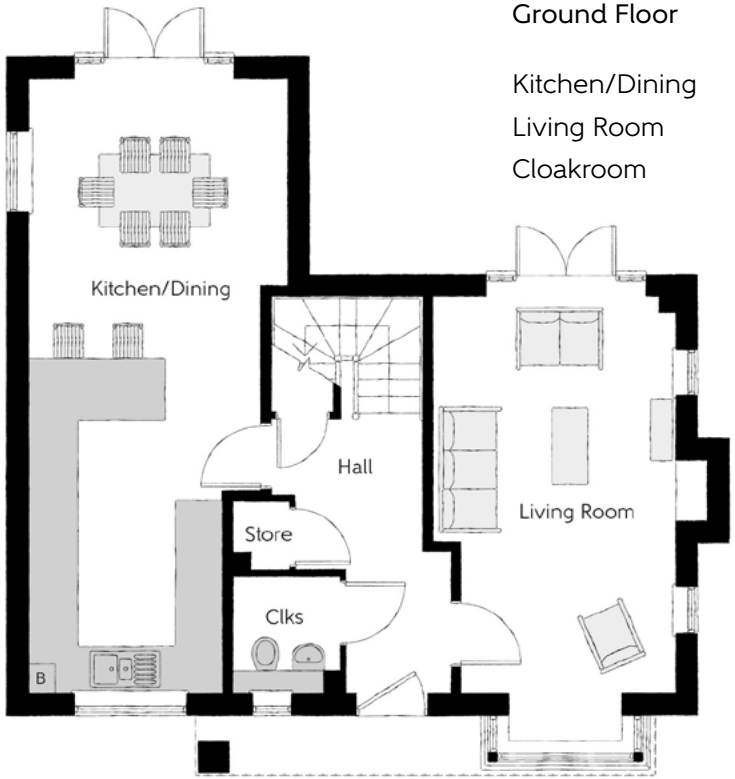
First Floor

Bedroom 1	5.54m x 3.44	18'1" x 11'3"
Bedroom 1 En Suite	2.20m x 1.72m	7'2" x 5'7"
Bedroom 2	4.17m x 3.63m	13'8" x 11'10"
Bedroom 3	3.17m x 2.78m	10'4" x 9'1"
Bathroom	2.22m x 1.94	7'3" x 6'4"



Ground Floor

Kitchen/Dining	8.58m x 2.70m	28'2" x 8'10"
Living Room	5.54m x 3.38m	18'1" x 11'0"
Cloakroom	1.55m x 1.50m	5'1" x 4'11"



B - Boiler Clks - Cloakroom WS - Wardrobe Space (suggestion only, wardrobe not included) W - Fitted Wardrobe ---- - Reduced Head Height

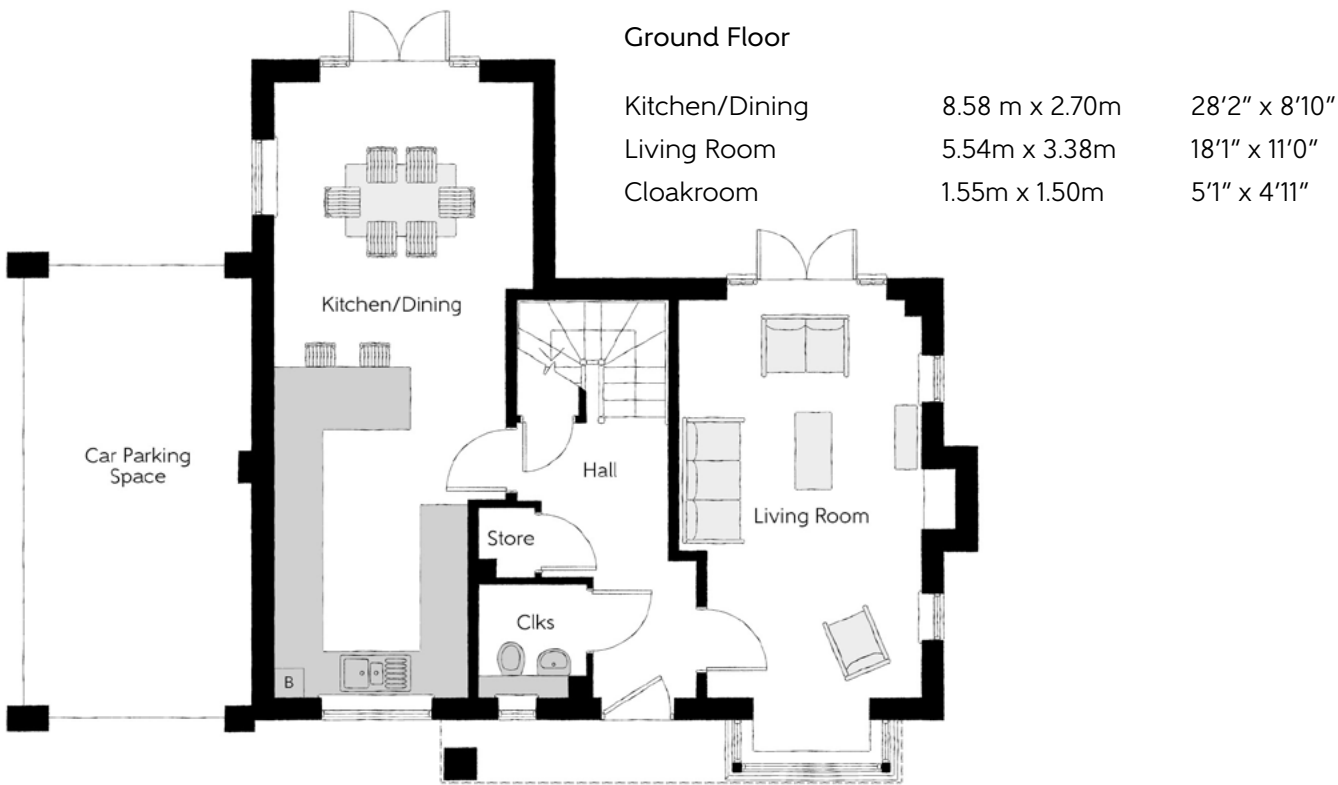
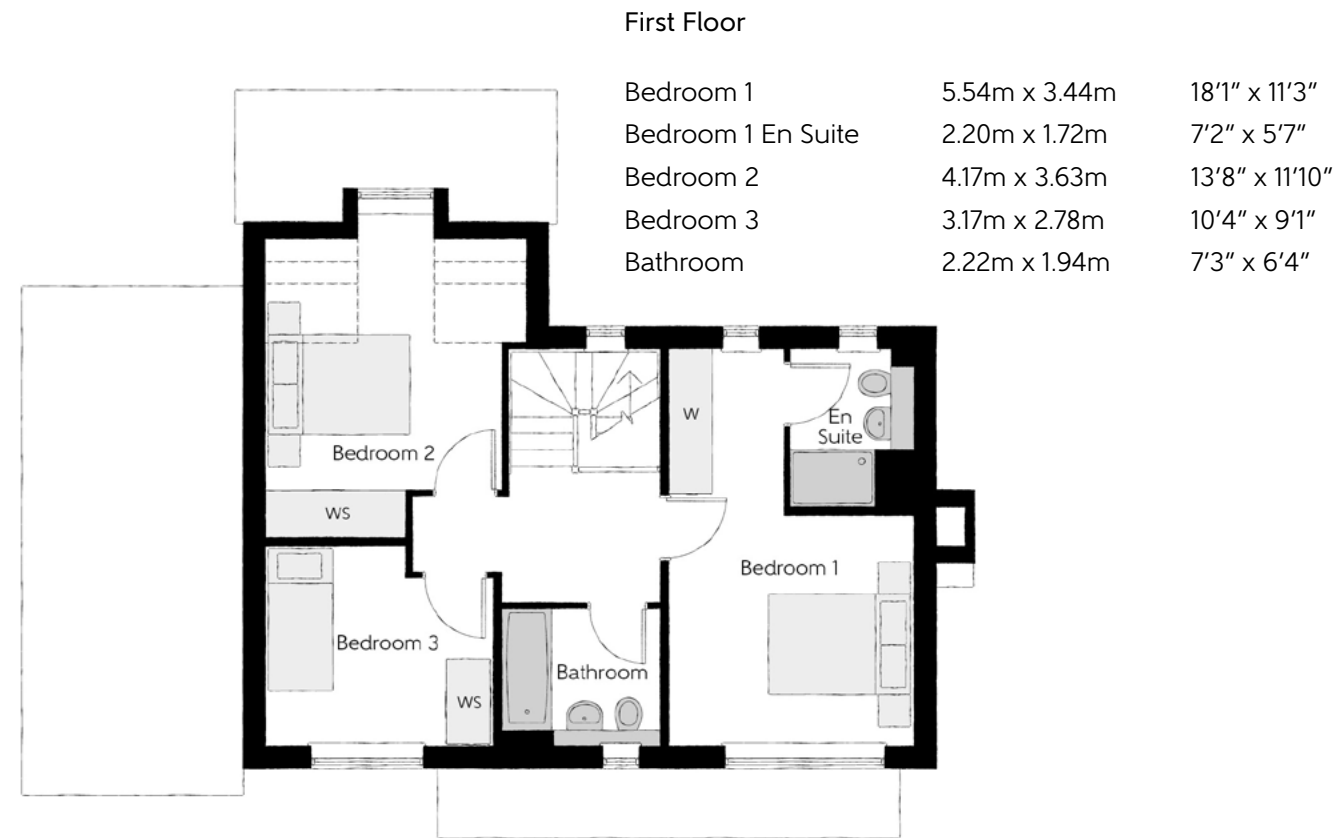
**Furniture arrangements are for illustrative purposes only. Items are not included, nor to scale.**  
The items shown in this key may be subject to change, and positions could vary from those indicated on this floorplan. Please refer to Sales Advisor for details of your selected plot. Computer generated image shown overleaf. External finishes, landscaping and configuration may vary from plot to plot. Please refer to Sales Advisor for further details. All dimensions are approximate and should not be used for carpet sizes, appliance spaces or furniture. We operate a policy of continuous improvement and individual features such as kitchen and bathroom layouts, doors, windows, garages and elevational treatments may vary from time to time. Consequently these particulars should be treated as general guidance only and do not constitute a contract, part of a contract or a warranty.





# The Carron

THREE BEDROOM HOME



B - Boiler Clks - Cloakroom WS - Wardrobe Space (suggestion only, wardrobe not included) W - Fitted Wardrobe ---- - Reduced Head Height

**Furniture arrangements are for illustrative purposes only. Items are not included, nor to scale.**  
The items shown in this key may be subject to change, and positions could vary from those indicated on this floorplan. Please refer to Sales Advisor for details of your selected plot. Computer generated image shown overleaf. External finishes, landscaping and configuration may vary from plot to plot. Please refer to Sales Advisor for further details. All dimensions are approximate and should not be used for carpet sizes, appliance spaces or furniture. We operate a policy of continuous improvement and individual features such as kitchen and bathroom layouts, doors, windows, garages and elevational treatments may vary from time to time. Consequently these particulars should be treated as general guidance only and do not constitute a contract, part of a contract or a warranty.





# The Cobden

THREE BEDROOM HOME

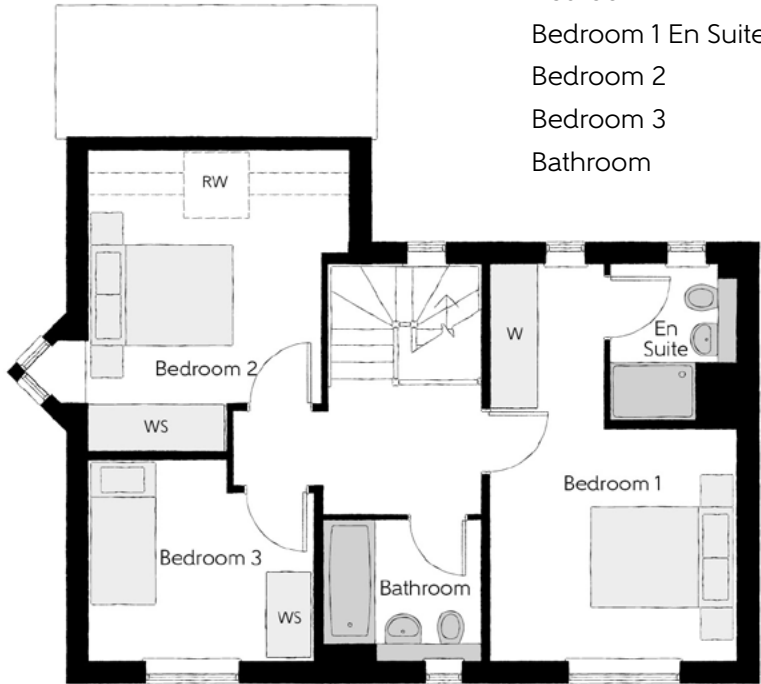


The Cobden

Three bedroom home

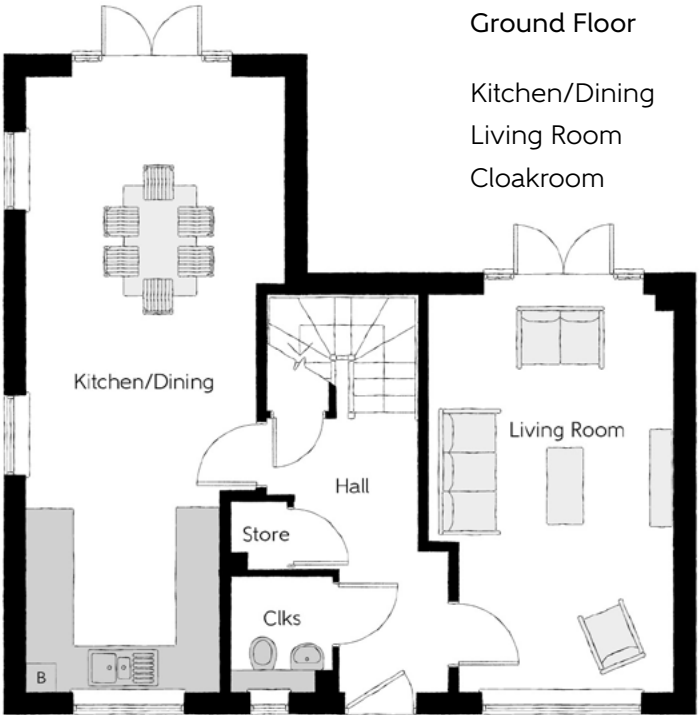
### First Floor

Bedroom 1	5.54m x 3.44	18'1" x 11'3"
Bedroom 1 En Suite	2.20m x 1.72m	7'2" x 5'7"
Bedroom 2	4.17m x 3.63m	13'8" x 11'10"
Bedroom 3	3.17m x 2.78m	10'4" x 9'1"
Bathroom	2.22m x 1.94	7'3" x 6'4"



### Ground Floor

Kitchen/Dining	8.58m x 2.70m	28'2" x 8'10"
Living Room	5.54m x 3.38m	18'1" x 11'0"
Cloakroom	1.55m x 1.50m	5'1" x 4'11"



B - Boiler Clks - Cloakroom WS - Wardrobe Space (suggestion only, wardrobe not included) RW - Roof Window W - Fitted Wardrobe ---- - Reduced Head Height

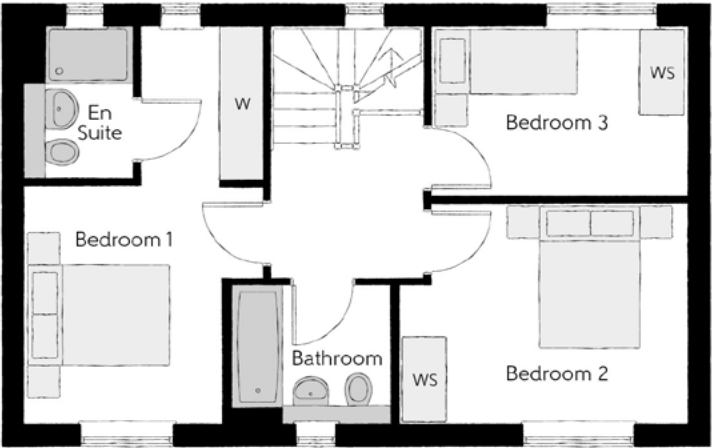
**Furniture arrangements are for illustrative purposes only. Items are not included, nor to scale.**  
The items shown in this key may be subject to change, and positions could vary from those indicated on this floorplan. Please refer to Sales Advisor for details of your selected plot. Computer generated image shown overleaf. External finishes, landscaping and configuration may vary from plot to plot. Please refer to Sales Advisor for further details. All dimensions are approximate and should not be used for carpet sizes, appliance spaces or furniture. We operate a policy of continuous improvement and individual features such as kitchen and bathroom layouts, doors, windows, garages and elevational treatments may vary from time to time. Consequently these particulars should be treated as general guidance only and do not constitute a contract, part of a contract or a warranty.





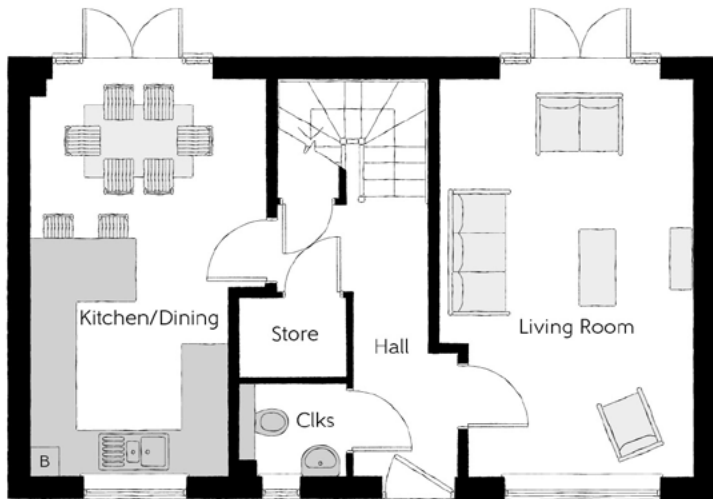
# The Guillard

THREE BEDROOM HOME



First Floor

Bedroom 1	5.54m x 3.31m	18'2" x 4'3"
Bedroom 1 En Suite	2.10m x 1.48m	6'11" x 4'10"
Bedroom 2	3.06m x 4.03m	10'0" x 13'2"
Bedroom 3	2.35m x 3.56m	7'9" x 11'8"
Bathroom	1.94m x 2.20m	6'4" x 7'3"



Ground Floor

Kitchen/Dining	5.54m x 2.76m	18'2" x 9'1"
Living Room	5.54m x 3.55m	18'2" x 11'4"
Cloakroom	1.50m x 1.30m	4'11" x 4'3"

B - Boiler   Clks - Cloakroom   WS - Wardrobe Space (suggestion only, wardrobe not included)   W - Fitted Wardrobe

**Furniture arrangements are for illustrative purposes only. Items are not included, nor to scale.**  
The items shown in this key may be subject to change, and positions could vary from those indicated on this floorplan. Please refer to Sales Advisor for details of your selected plot. Computer generated image shown overleaf. External finishes, landscaping and configuration may vary from plot to plot. Please refer to Sales Advisor for further details. All dimensions are approximate and should not be used for carpet sizes, appliance spaces or furniture. We operate a policy of continuous improvement and individual features such as kitchen and bathroom layouts, doors, windows, garages and elevational treatments may vary from time to time. Consequently these particulars should be treated as general guidance only and do not constitute a contract, part of a contract or a warranty.





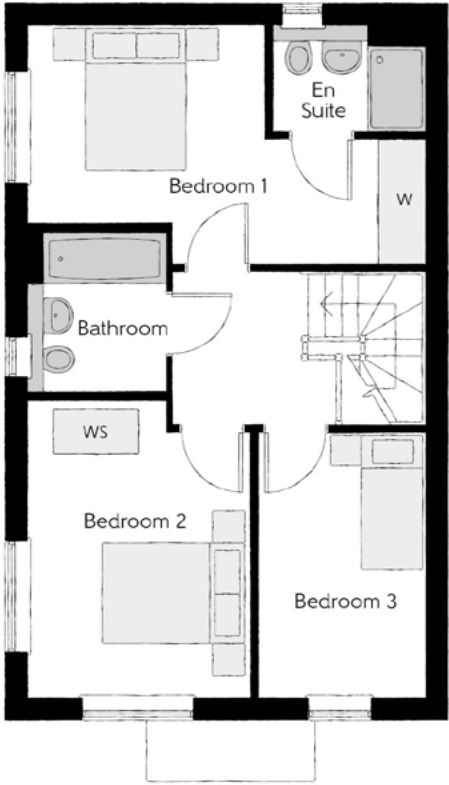
# The Heatherwood

THREE BEDROOM HOME



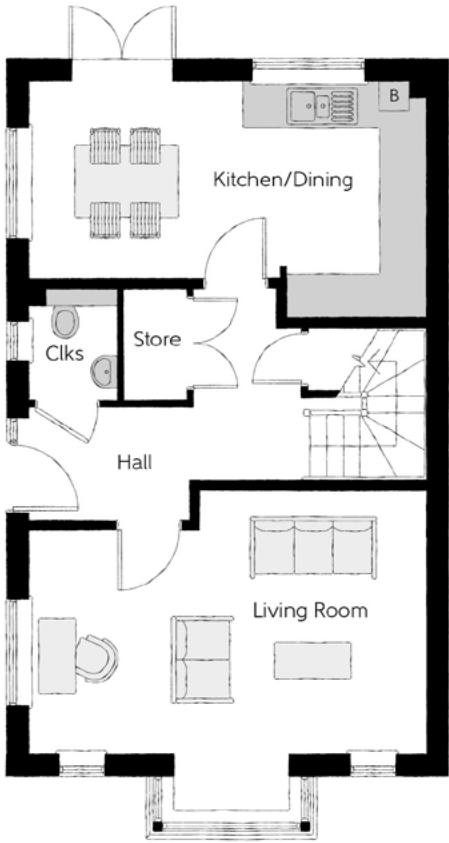
The Heatherwood

Three bedroom home



First Floor

Bedroom 1	2.77m x 5.54m <small>(max)</small>	9'1" x 18'2" <small>(max)</small>
Bedroom 1 En Suite	1.48m x 2.10m	4'10" x 6'11"
Bedroom 2	4.14m x 3.09m	13'7" x 10'2"
Bedroom 3	3.72m x 2.31m	12'2" x 7'7"
Bathroom	2.20m x 1.94m	7'3" x 6'4"



Ground Floor

Kitchen/Dining	2.74m x 5.54m	8'12" x 18'2"
Living Room	3.60m x 5.54m	11'10" x 18'2"
Cloakroom	1.23m x 1.55m	4'0" x 4'11"

B - Boiler Clks - Cloakroom WS - Wardrobe Space (suggestion only, wardrobe not included) W - Fitted Wardrobe

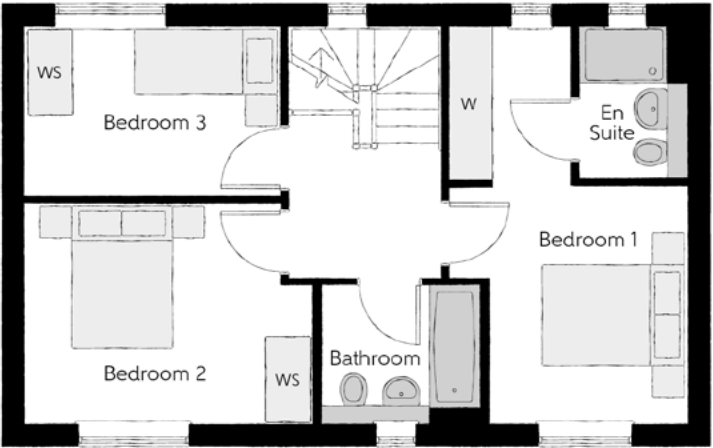
**Furniture arrangements are for illustrative purposes only. Items are not included, nor to scale.**  
The items shown in this key may be subject to change, and positions could vary from those indicated on this floorplan. Please refer to Sales Advisor for details of your selected plot. Computer generated image shown overleaf. External finishes, landscaping and configuration may vary from plot to plot. Please refer to Sales Advisor for further details. All dimensions are approximate and should not be used for carpet sizes, appliance spaces or furniture. We operate a policy of continuous improvement and individual features such as kitchen and bathroom layouts, doors, windows, garages and elevational treatments may vary from time to time. Consequently these particulars should be treated as general guidance only and do not constitute a contract, part of a contract or a warranty.





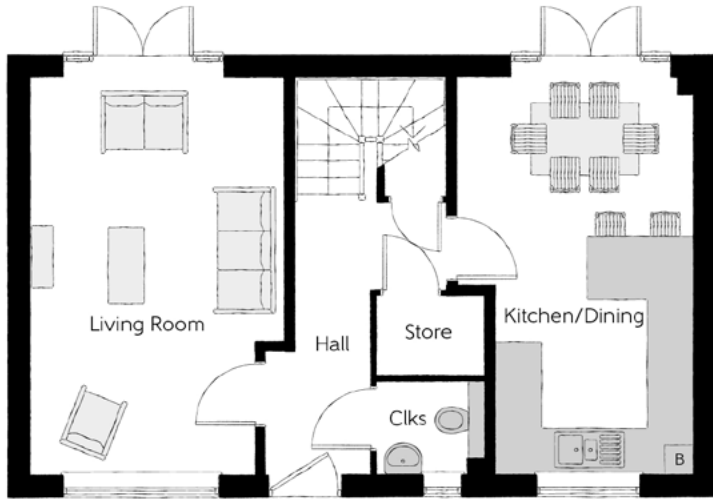
# The Forterra

THREE BEDROOM HOME



First Floor

Bedroom 1	5.54m x 3.31m	18'2" x 4'3"
Bedroom 1 En Suite	2.10m x 1.48m	6'11" x 4'10"
Bedroom 2	3.06m x 4.03m	10'0" x 13'2"
Bedroom 3	2.35m x 3.56m	7'9" x 11'8"
Bathroom	1.94m x 2.20m	6'4" x 7'3"



Ground Floor

Kitchen/Dining	5.54m x 2.76m	18'2" x 9'1"
Living Room	5.54m x 3.55m	18'2" x 11'4"
Cloakroom	1.50m x 1.30m	4'11" x 4'3"

B - Boiler Clks - Cloakroom WS - Wardrobe Space (suggestion only, wardrobe not included) W - Fitted Wardrobe

**Furniture arrangements are for illustrative purposes only. Items are not included, nor to scale.**  
The items shown in this key may be subject to change, and positions could vary from those indicated on this floorplan. Please refer to Sales Advisor for details of your selected plot. Computer generated image shown overleaf. External finishes, landscaping and configuration may vary from plot to plot. Please refer to Sales Advisor for further details. All dimensions are approximate and should not be used for carpet sizes, appliance spaces or furniture. We operate a policy of continuous improvement and individual features such as kitchen and bathroom layouts, doors, windows, garages and elevational treatments may vary from time to time. Consequently these particulars should be treated as general guidance only and do not constitute a contract, part of a contract or a warranty.





# The Holmbush

THREE BEDROOM HOME

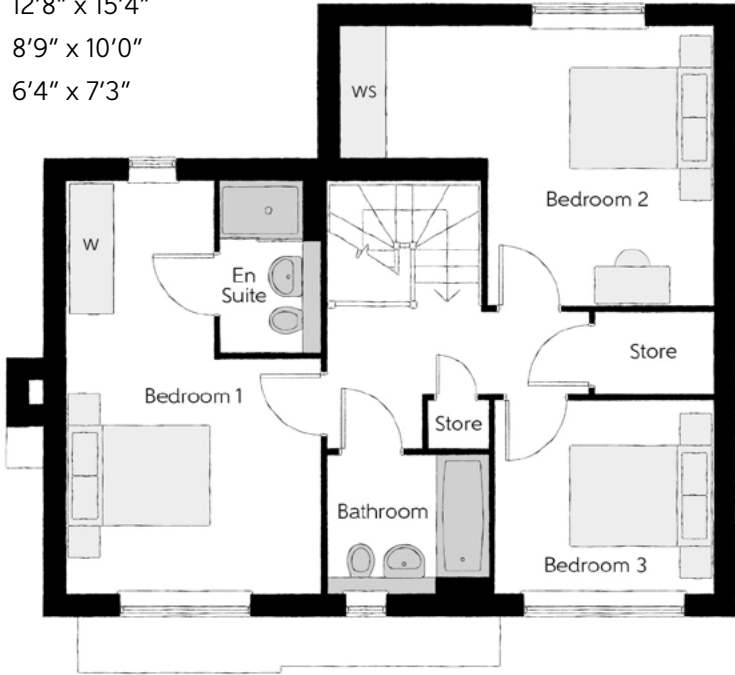


## The Holmbush

## Three bedroom home

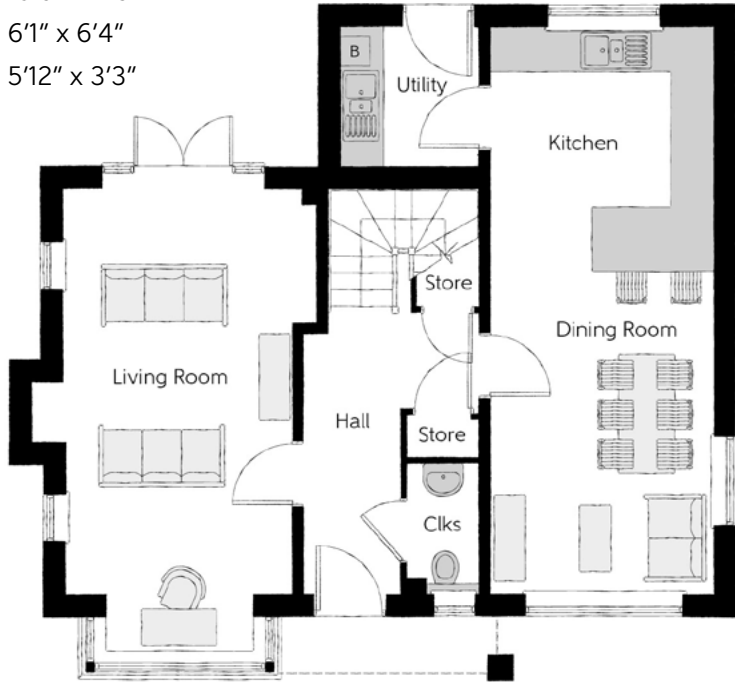
### First Floor

Bedroom 1	5.65m x 3.51m	18'6" x 11'6"
Bedroom 1 En Suite	2.20m x 1.40m	7'6" x 4'7"
Bedroom 2	3.86m x 4.68m	12'8" x 15'4"
Bedroom 3	2.68m x 3.05m	8'9" x 10'0"
Bathroom	1.94m x 2.20m	6'4" x 7'3"



### Ground Floor

Kitchen Dining	7.90m x 3.12m	25'11" x 10'3"
Living Room	5.65m x 3.49m	18'6" x 11'5"
Utility	1.85m x 1.92m	6'1" x 6'4"
Cloakroom	1.82m x 1.00m	5'12" x 3'3"



B - Boiler   Clks - Cloakroom   WS - Wardrobe Space (suggestion only, wardrobe not included)   W - Fitted Wardrobe

**Furniture arrangements are for illustrative purposes only. Items are not included, nor to scale.**  
The items shown in this key may be subject to change, and positions could vary from those indicated on this floorplan. Please refer to Sales Advisor for details of your selected plot. Computer generated image shown overleaf. External finishes, landscaping and configuration may vary from plot to plot. Please refer to Sales Advisor for further details. All dimensions are approximate and should not be used for carpet sizes, appliance spaces or furniture. We operate a policy of continuous improvement and individual features such as kitchen and bathroom layouts, doors, windows, garages and elevational treatments may vary from time to time. Consequently these particulars should be treated as general guidance only and do not constitute a contract, part of a contract or a warranty.





# The Downsview

FOUR BEDROOM HOME

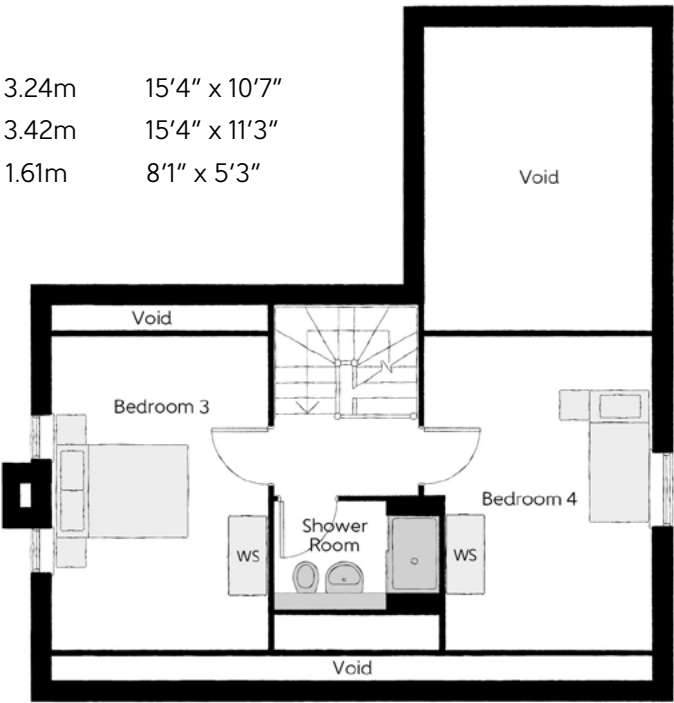
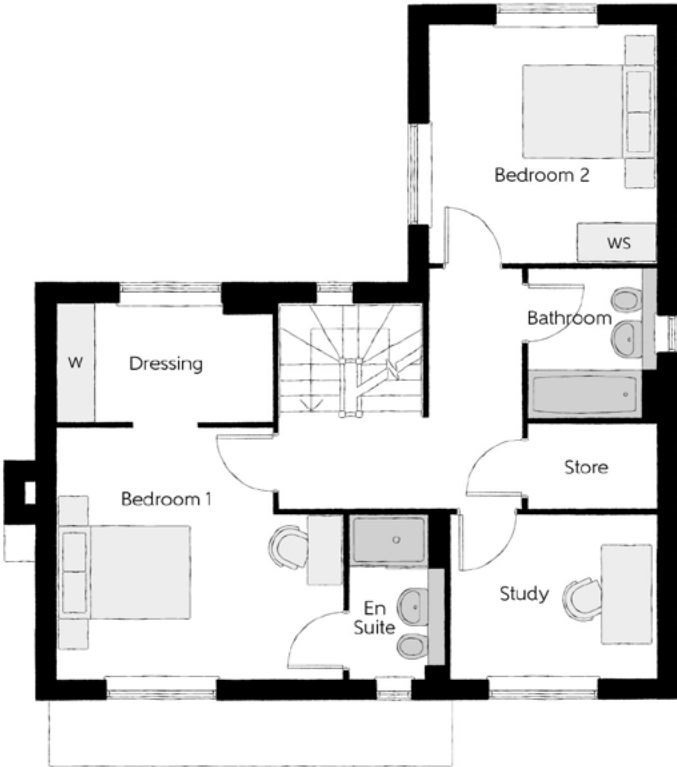


## The Downsview

Four bedroom home

### Second Floor

Bedroom 3	4.67m x 3.24m	15'4" x 10'7"
Bedroom 4	4.67m x 3.42m	15'4" x 11'3"
Shower Room	2.46m x 1.61m	8'1" x 5'3"

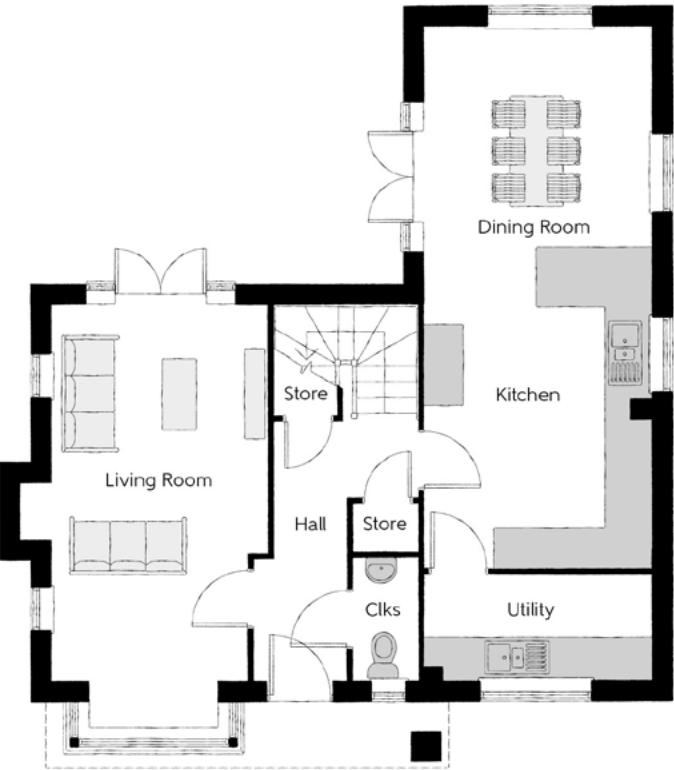


### First Floor

Bedroom 1	5.65m x 4.31m	18'6" x 14'2"
Bedroom 1 En Suite	2.46m x 1.41m	8'1" x 4'7"
Bedroom 2	3.51m x 3.39m	11'6" x 11'2"
Study	3.08m x 2.46m	10'1" x 8'1"
Bathroom	2.20m x 1.93m	7'3" x 6'4"

### Ground Floor

Kitchen Dining Room	8.13m x 3.42m	26'8" x 11'3"
Living Room	6.44m x 2.91m	21'1" x 9'7"
Utility	1.59m x 3.40m	5'3" x 11'2"
Cloakroom	1.85m x 0.95m	6'1" x 3'1"



Clks - Cloakroom    WS - Wardrobe Space (suggestion only, wardrobe not included)    W - Fitted Wardrobe

**Furniture arrangements are for illustrative purposes only. Items are not included, nor to scale.**  
The items shown in this key may be subject to change, and positions could vary from those indicated on this floorplan. Please refer to Sales Advisor for details of your selected plot. Computer generated image shown overleaf. External finishes, landscaping and configuration may vary from plot to plot. Please refer to Sales Advisor for further details. All dimensions are approximate and should not be used for carpet sizes, appliance spaces or furniture. We operate a policy of continuous improvement and individual features such as kitchen and bathroom layouts, doors, windows, garages and elevational treatments may vary from time to time. Consequently these particulars should be treated as general guidance only and do not constitute a contract, part of a contract or a warranty.





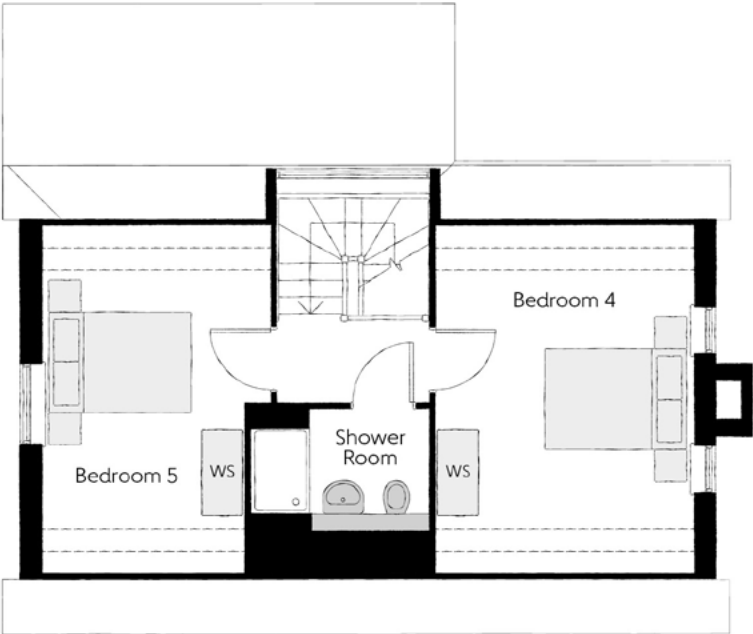
# The Heathfield

FIVE BEDROOM HOME



The Heathfield

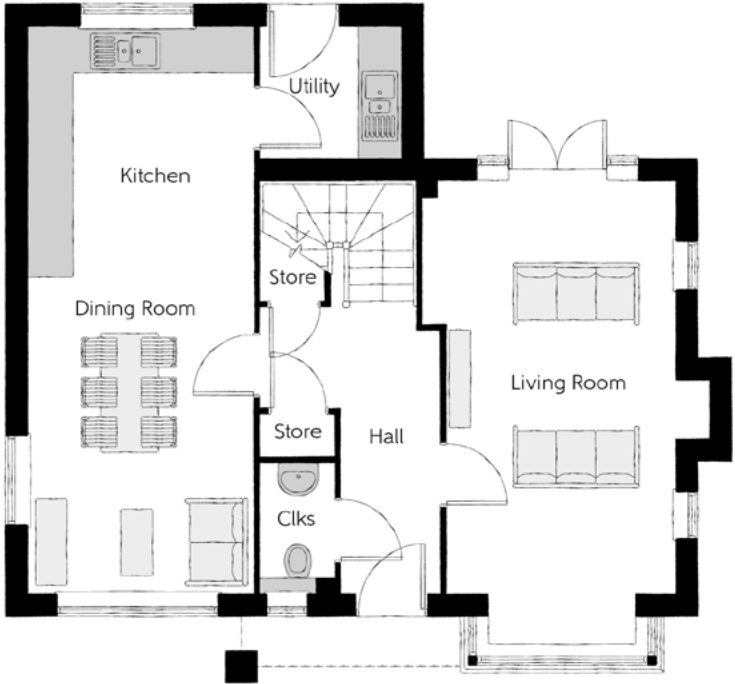
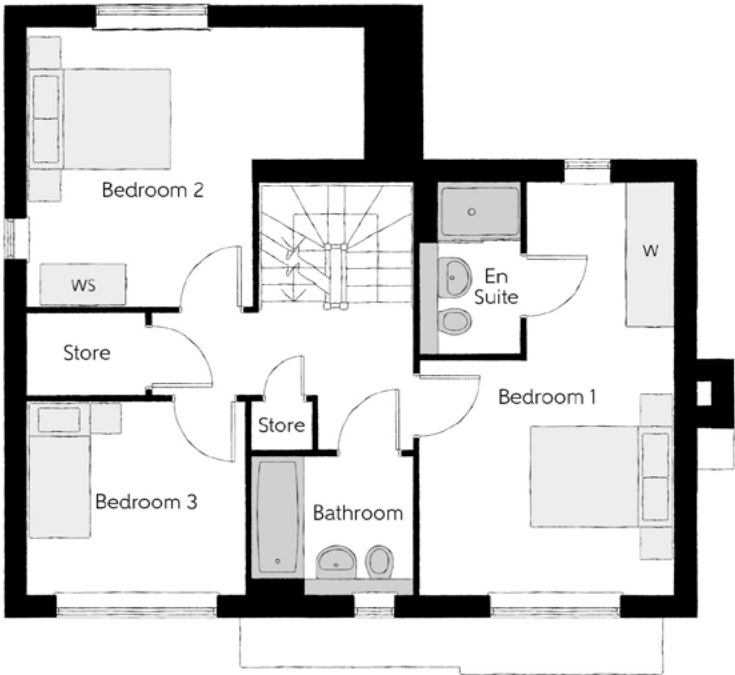
Five bedroom home



Second Floor		
Bedroom 4	4.85m x 3.55m	15'11" x 11'8"
Bedroom 5	4.82m x 3.18m	15'10" x 10'5"
Shower Room	1.68m x 2.46m	5'6" x 8'1"

First Floor

Bedroom 1	5.65m x 3.52m	18'6" x 11'6"
Bedroom 1 En Suite	2.26m x 1.40m	7'5" x 4'7"
Bedroom 2	4.73m x 3.87m	15'6" x 12'8"
Bedroom 3	2.68m x 3.05m	8'9" x 10'0"
Bathroom	2.20m x 1.94m	7'3" x 6'3"



Ground Floor		
Kitchen/Dining	7.90m x 3.12m	25'11" x 10'3"
Living Room	5.65m x 3.49m	18'6" x 11'5"
Utility	1.93m x 1.85m	6'4" x 6'1"
Cloakroom	1.83m x 1.00m	5'12" x 3'3"

B - Boiler Clks - Cloakroom WS - Wardrobe Space (suggestion only, wardrobe not included) W - Fitted Wardrobe ---- - Reduced Head Height

**Furniture arrangements are for illustrative purposes only. Items are not included, nor to scale.**  
The items shown in this key may be subject to change, and positions could vary from those indicated on this floorplan. Please refer to Sales Advisor for details of your selected plot. Computer generated image shown overleaf. External finishes, landscaping and configuration may vary from plot to plot. Please refer to Sales Advisor for further details. All dimensions are approximate and should not be used for carpet sizes, appliance spaces or furniture. We operate a policy of continuous improvement and individual features such as kitchen and bathroom layouts, doors, windows, garages and elevational treatments may vary from time to time. Consequently these particulars should be treated as general guidance only and do not constitute a contract, part of a contract or a warranty.



Specification

FINISHES			2 Bedroom Homes	3 Bedroom Homes	4 Bedroom Homes	5 Bedroom Homes
	Loft Hatch	Loft Hatch - Hinged Drop Down	●	●	●	●
	Entrance Doors	GRP Insulated Door	●	●	●	●
	Ceilings	Crown White Matt Emulsion	●	●	●	●
	Walls	Crown White Matt Emulsion	●	●	●	●
	Floors	Concrete Ground Floor/Chipboard First Floor	●	●	●	●
	Window Cills	White Satin MDF	●	●	●	●
	Stairs	Timber Stair - White Satin MDF Strings	●	●	●	●
	Balusters	White Satin Stop Chamfered Balusters	●	●	●	●
	Newel Posts	White Satin Stop Chamfered Newels	●	●	●	●
	Newel Caps	Oak Flat Top Newel Caps - clear varnish	●	●	●	●
	Handrail	Oak heavy duty handrail - clear varnish	●	●	●	●
	Skirting	White Satin 94x14 MDF Grooved and Chamfered	●	●	●	●
	Architrave	White Satin 69x18 MDF Grooved and Chamfered	●	●	●	●
	Internal Doors	Premdoor Ladder Smooth - White	●	●	●	●
	Ironmongery	Brushed Chrome SR100 Door Furniture	●	●	●	●
	Wardrobes	Sliding Fitted Wardrobes to Bedroom 1 only	●	●	●	●
	Wet Room Flooring	Amtico Flooring to all wet rooms	●	●	●	●
	Hall/Kitchen/Dining Flooring	Amtico Flooring throughout	●	●	●	●
	Lounge Flooring	Sensations Range Carpet	●	●	●	●
	Stairs and Landing Flooring	Sensations Range Carpet throughout	●	●	●	●
	Bedroom Flooring	Sensations Range Carpet throughout	●	●	●	●
KITCHEN	Frontals	Shaker Style - ROK/Symphony	●	●	●	●
	Carcass	Shaker Style - ROK/Symphony	●	●	●	●
	Units	Shaker Style - ROK/Symphony	●	●	●	●
	Worktops	Silestone	●	●	●	●
	Kitchen Sink	Stainless steel undermounted 1.5 bowl	●	●	●	●
	Utility Sink	Stainless steel inset	●	●	●	●
	Splashback	TBC - Depending on supplier	●	●	●	●
	Appliances - Oven	AEG Single BEK355020M - eye level	●	●	●	●
	Appliances - Hob	AEG Induction IKB64401FB 600mm	●	●	●	●
	Appliances - Extractor	AEG Cooker Hood Extractor DTB 600mm	●	●	●	●
	Appliances - Fridge/Freezer	AEG 70/30 Fridge Freezer SCB6181XLS	●	●	●	●
	Appliances - Dishwasher	AEG Dishwasher FSK31610Z	●	●	●	●
WETROOMS	Cloaks - WC	Roca Ona Range	●	●	●	●
	Cloaks - Basin	Roca Ona Range	●	●	●	●
	Cloaks - Brassware	Roca L90 Range	●	●	●	●
	Cloaks - Tiling	Half height throughout inc splashback	●	●	●	●
	Bathroom - WC	Roca Ona Range	●	●	●	●
	Bathroom - Basin	Roca Ona Range	●	●	●	●
	Bathroom - Bath	Roca Ona Range	●	●	●	●
	Bathroom - Brassware	Roca L90 Range	●	●	●	●
	Bathroom - Shower Tray	Mira flight low profile	●	●	●	●
	Bathroom - Shower	Roca Splash T	●	●	●	●
	Bathroom - Tiling	Full height bath, half height remaining walls	●	●	●	●
	En Suite - WC	Roca Ona Range	●	●	●	●
	En Suite - Basin	Roca Ona Range	●	●	●	●
	En Suite - Bath	Roca Ona Range	●	●	●	●
	En Suite - Brassware	Roca L90 Range	●	●	●	●
	En Suite - Shower Tray	Mira flight low profile	●	●	●	●
	En Suite - Shower	Roca Splash T	●	●	●	●
	En Suite - Tiling	Full height shower, half height remaining walls	●	●	●	●

MECHANICAL	Waste Water Heat Recovery	Waste Water Heat Recovery System	●	●	●	●
	Boiler	Gas Combi Boiler	●	●	●	●
		Air Source Heat Pump	●	●	●	●
	Controls	Google Nest	●	●	●	●
	Radiators	Radiators to all rooms	●	●	●	●
	Towel Warmers	Flat Black to Bathroom and En Suite (Wet)	●	●	●	●
	Ventilation	Decentralised Mechanical Extract	●	●	●	●
ELECTRICS	Home Working	Dedicated Power, USB and Data points	●	●	●	●
	Safety - Heat	Heat Detector DET	●	●	●	●
	Safety - Fire	Optical Smoke Detectors LD2 D2 DET	●	●	●	●
	Safety - Carbon	Fireblitz FHCO-BH Carbon Monoxide Detector	●	●	●	●
	Consumer Unit	Wylex Consumer Unit	●	●	●	●
	Sockets and Switches	Brushed Steel Fittings (White Inserts) - GF and landing	●	●	●	●
	USB Locations	USB-C Kitchen, Living Room and Bedroom 1-2 only	●	●	●	●
	Shaver/Toothbrush Point	Bathroom and En Suite	●	●	●	●
	Lighting	Pendant Fitting to Habitable Rooms	●	●	●	●
	Lighting - Kitchen	Polished Chrome Recessed Spot Lights	●	●	●	●
	Lighting - Kitchen under Unit	LED Strip	●	●	●	●
	Lighting - Bathroom and En Suite	Brushed Chrome Recessed Spot Lights	●	●	●	●
	Lighting - External	Clifton Brushed Steel Up/Down (Front and Rear)	●	●	●	●
	Communications - TV	TV point to Living/Family	●	●	●	●
	Communications - Voice	Telephone Point to Living Room	●	●	●	●
EXTERNALS	Communications - Data	Cat 6 Network Point to Living/Family/Bed 1 and Study	●	●	●	●
	Broadband	Ultrafast Fibre Connectivity Openreach/Hyperoptic	●	●	●	●
	Outside Tap	External Tap	●	●	●	●
	Number Plaque	Artisan Number Plaque	●	●	●	●
	Footpath	Buff Riven PCC Flags 600x600x32	●	●	●	●
	Patio	Buff Riven PCC Flags 600x600x32 - Min 6x6 slabs	●	●	●	●
	Driveway	Bitmac Black	●	●	●	●
	Garage	Light and Power to Incurtilage Garages	●	●	●	●
	Landscaping - Front	Medallion Turf and Landscape Planting	●	●	●	●
	Landscaping - Rear	Medallion Turf	●	●	●	●
	EV Charging Terminal	Universal Socket 7kw	●	●	●	●





## Dedicated to delivering quality

An enhanced specification is a Bellway hallmark.

All of our homes are equipped with superior fixtures and fittings, which dovetails perfectly with our focus on design and attention to detail.

Expertly crafted using state-of-the-art materials, your brand new home is finished to a high standard so you can start enjoying it the moment you get your keys.

"The overall finish of the home is perfect – Bellway really pay attention to every detail. The team were amazing and supported us throughout the process."

**SAMI AND SARA,**  
HANWOOD PARK

## Homes to love, built with care

From the first day you visit our sales centre, to the day you move in and beyond, we aim to provide a level of service and after-sales care that is second to none.

A number of quality checks are carried out on each of our new homes through the construction process and on completion. Once your home has passed all of our quality checks, you will be invited to attend your Home Demonstration which will provide an opportunity for you to understand the various elements of your new home. On move in day, our site and sales teams will be there to ensure that everything goes as smoothly as possible.

Once you've settled into your new home, Bellway has experienced after-sales teams to provide support and assistance whenever you need it. Our homes come with a 10-year NHBC Buildmark policy, or an equivalent warranty from another provider. This includes deposit protection from exchange of contracts, a two-year builder warranty from legal completion, and then eight years of structural defects insurance cover.\*

We are confident that our approach to building and selling quality homes, coupled with our customer care processes, will provide you with many years of enjoyment in your new home.



\*For more details, visit the NHBC website at [www.nhbc.co.uk/homeowners](http://www.nhbc.co.uk/homeowners) and view the 'Welcome to NHBC warranty and insurance' brochure, or refer to the brochure of your alternative warranty provider.





# How to find us



Bellway abides by the New Homes Quality Code (NHQC), an independent industry code established to champion quality new homes and deliver better outcomes for customers.

# Bellway

