



The Landings

The Landings is a development of 2, 3, 4, and 5 bedroom homes, located in Warrington, Cheshire.



Bellway



A home to enjoy spaciously stylish living

A location to feel at the heart of everything

Welcome to The Landings, a collection of one, two, three, four, and five bedroom homes where layouts and living spaces thoughtfully styled for contemporary living meet the impressive energy-efficiency of a brand-new home finished to our renowned signature level of specification. Set on the edge of Warrington – one of the UK's most economically dynamic and successful areas – you'll enjoy exceptional and

accessible amenities from shopping to leisure while the breadth of commuting options has also made this a highly sought-after location. With the M62 just minutes away, part of a wider well-connected road network, whether commuting to Manchester or Liverpool or being amongst lush green Cheshire countryside, at The Landings you have found the ideal place.

The place to make the most of superb amenities

The perfect base to create real life-work balance

Living at The Landings means excellent shopping is conveniently close, from Westbrook Centre's Asda Superstore to Lidl just along Burtonwood Road as well as Gemini Retail Park for IKEA, Next and M&S. Golden Square in the town centre is the place for brands from Primark to JD sports, part of a reenergised 21st Century centre that includes Time Square and brand-new Cookhouse at Warrington Market to take global journeys in food. There is also a state-of-the-art 13-screen Cineworld, while close to home you'll find the Odeon Luxe. Enjoy the made-for-cinema dining experience, or Sunday roasts at welcoming local the Seven Woods with beer garden. The popular steakhouse, Miller and Carter Warrington is also very close by.

Families will find St Philip Westbrook CofE Primary locally, with Great Sankey High for seniors where pupils enjoy its popular summer camps learning to climb, abseil and kayak at Lake Vyrnwy. For Sixth Form the school partners Barrow Hall College. Out of school the Great Sankey Neighbourhood Hub offers community health and

fitness facilities for all ages, and Mary Ann Meadows Recreation Ground has full-size and junior football and rugby pitches. Home matches of Super League Warrington Wolves at The Halliwell Jones Stadium will inspire young players, while golfers will find inspiration at Warrington Golf Club with its undulating course and open vistas.

There's golfing fun too at Walton Hall and Gardens. Well-loved for generations, enjoy its Adventure Golf and Pitch n' Putt, picnics and woodland walks – and meet friendly alpacas and donkeys at the Children's Zoo. Gulliver's World is nearby too for theme park excitement. In summer pick-your-own strawberries at Cheshire farms and make the most of iconic Tatton Park's activities like 'The Tiger who came to Tea' trails, Segway adventures, and magical Evening Deer Walks. You can always feel away from it all, yet with Junction 8 M62 close by, Manchester Airport 21 miles, Liverpool airport 15 miles, and trains to London in 1h 47 from Warrington Bank Quay you will always feel connected.





Development plan

1 Bedroom Homes

 The Souther*Life*
Plots 60*, 62*, 64*, 66*, 80*, 82*, 88*, 90*, 105* & 107*

2 Bedroom Homes

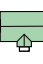
 The Potter
Plots 35*, 36*, 42*, 43*, 44*, 45*, 46*, 47*, 84* & 85*

 The Glover
Plots 61*, 63*, 65*, 67*, 81*, 83*, 89*, 91*, 106* & 108*

3 Bedroom Homes

 The Shoemaker
Plots 33*, 34*, 37*, 38*, 40, & 41*

 The Tailor
Plots 11, 74, 92, 93, 119 & 187

 The Thespian
Plots 10, 75, 118 & 188

 The Chandler
Plots 12, 13, 31, 32, 94, 95, 96, 97, 159, 160, 161, 162, 185 & 186

 The Quilter
Plots 111, 178, 179 & 180


 The Lymner
Plots 14, 30, 39, 48, 55, 57, 58, 72, 78, 98, 100, 116, 137, 170, 177 & 184

 The Tanner
Plots 173 & 174

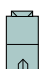
 The Coppersmith*Life*
Plots 49, 54, 99, 112, 113, 140, 141, 168 & 169

 The Fletcher
Plots 50, 51, 52, 53, 155 & 156


 The Mason
Plots 56, 59, 104, 109, 110, 114, 115 & 165

 The Sawyer
Plots 29, 68, 69, 70, 77, 79, 163, 164, 166 & 167


4 Bedroom Homes

 The Wheelwright
Plots 2, 3, 4, 5, 6, 7, 8, 9, 120, 121, 122, 123, 138, 139, 146, 147, 171, 172, 175, 176, 189, 190, 191, 192, 194 & 195

 The Fisher
Plots 22, 24, 27, 28, 71, 76, 142 & 145

 The Reedmaker*Life*
Plots 1, 15, 16, 17, 18, 19, 20, 73, 103, 117, 124, 148, 149, 150, 151, 152, 157, 158, 181, 182 & 183

 The Bowyer
Plots 153, 154 & 193

 The Lorimer*Life*
Plots 23, 25, 26, 101, 102, 143 & 144

5 Bedroom Homes

 The Parkman
Plot 21

Affordable Homes

 Affordable Homes
Plots 86 & 87

*Discounted sales homes

Key to plan

Life Home V Visitor parking
s/s Sub station POS Public open space



The site plan is drawn to show the relative position of individual properties. NOT TO SCALE. This is a two dimensional drawing and will not show land contours and gradients, boundary treatments, landscaping or local authority street lighting. Footpaths subject to change. For details of individual properties and availability please refer to our Sales Advisor. *The location of affordable homes is indicative.



The SouterLife

ONE BEDROOM GROUND FLOOR MAISONETTE



Bellway



Ground Floor

Living / Kitchen / Dining	5.03 m x 5.34 m	16'-6" x 17'-6"
Bedroom 1	3.10 m x 4.00 m	10'-2" x 13'-1"
GF Bathroom	1.98 m x 2.16 m	6'-6" x 7'-1"

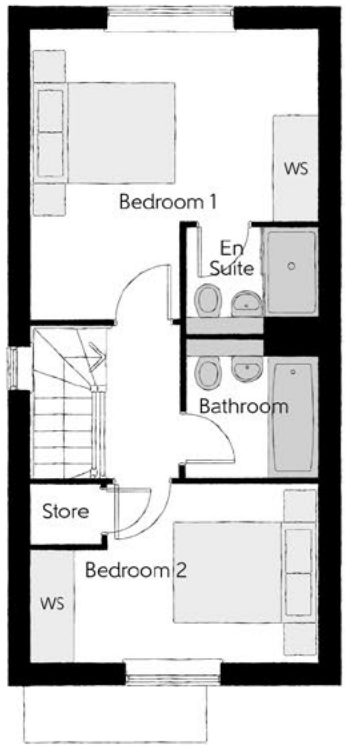
Cls - Cloakroom WS - Wardrobe Space (suggestion only, wardrobe not included)

Furniture arrangements are for illustrative purposes only. Items are not included, nor to scale.
The items shown in this key may be subject to change, and positions could vary from those indicated on this floorplan. Please refer to Sales Advisor for details of your selected plot. Computer generated image shown overleaf. External finishes, landscaping and configuration may vary from plot to plot. Please refer to Sales Advisor for further details. All dimensions are approximate and should not be used for carpet sizes, appliance spaces or furniture. We operate a policy of continuous improvement and individual features such as kitchen and bathroom layouts, doors, windows, garages and elevational treatments may vary from time to time. Consequently these particulars should be treated as general guidance only and do not constitute a contract, part of a contract or a warranty. 550 & 700 / SB (Rev L).



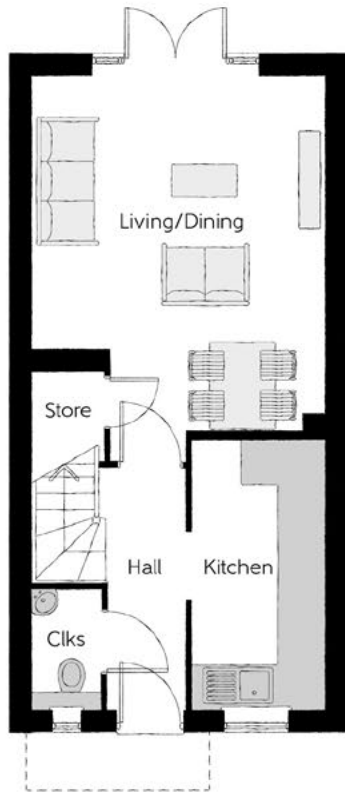
The Potter

TWO BEDROOM HOME



First Floor

Bedroom 1	3.99m x 4.04m (max)	13'1" x 13'3" (max)
Bedroom 1 En Suite	1.86m x 1.48m	6'1" x 4'10"
Bedroom 2	3.99m x 2.47m (max)	13'1" x 8'1" (max)
Bathroom	1.86m x 1.92m	6'1" x 6'3"



Ground Floor

Kitchen	1.80m x 3.72m	5'11" x 12'2"
Living/Dining	3.99m x 4.92m (max)	13'1" x 16'2" (max)
Cloakroom	0.94m x 1.60m	3'1" x 5'3"

Clks - Cloakroom WS - Wardrobe Space (suggestion only, wardrobe not included)

Furniture arrangements are for illustrative purposes only. Items are not included, nor to scale.
The items shown in this key may be subject to change, and positions could vary from those indicated on this floorplan. Please refer to Sales Advisor for details of your selected plot. Computer generated image shown overleaf. External finishes, landscaping and configuration may vary from plot to plot. Please refer to Sales Advisor for further details. All dimensions are approximate and should not be used for carpet sizes, appliance spaces or furniture. We operate a policy of continuous improvement and individual features such as kitchen and bathroom layouts, doors, windows, garages and elevational treatments may vary from time to time. Consequently these particulars should be treated as general guidance only and do not constitute a contract, part of a contract or a warranty. PO/CB/500/S00/S/01/K.



The Glover

TWO BEDROOM FIRST FLOOR MAISONETTE



Bellway



First Floor

Kitchen/Living/Dining	6.32m x 4.05m (max) (max)	20'9" x 13'3" (max) (max)
Bedroom 1	3.38m x 3.46m	11'1" x 11'4"
Bedroom 2	2.85m x 4.01m (max) (max)	9'4" x 13'2" (max) (max)
Bathroom	1.98m x 2.15m	6'6" x 7'1"

Cls - Cloakroom WS - Wardrobe Space (suggestion only, wardrobe not included)

Furniture arrangements are for illustrative purposes only. Items are not included, nor to scale.

The items shown in this key may be subject to change, and positions could vary from those indicated on this floorplan. Please refer to Sales Advisor for details of your selected plot. Computer generated image shown overleaf. External finishes, landscaping and configuration may vary from plot to plot. Please refer to Sales Advisor for further details. All dimensions are approximate and should not be used for carpet sizes, appliance spaces or furniture. We operate a policy of continuous improvement and individual features such as kitchen and bathroom layouts, doors, windows, garages and elevational treatments may vary from time to time. Consequently these particulars should be treated as general guidance only and do not constitute a contract, part of a contract or a warranty. SG2/CB/500/S00/S/01/D.



The Shoemaker

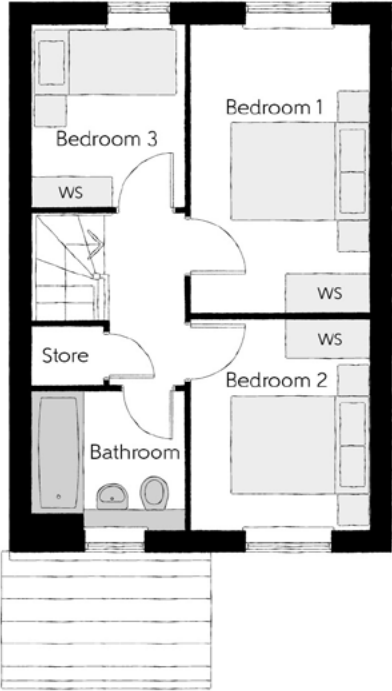
THREE BEDROOM HOME



Bellway

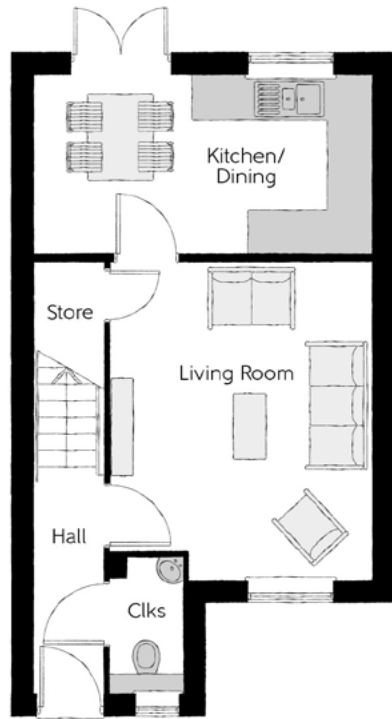
The Shoemaker

Three bedroom home



First Floor

Bedroom 1	2.48m x 3.99m	8'2" x 13'1"
Bedroom 2	2.48m x 2.91m	8'2" x 9'7"
Bedroom 3	2.10m x 2.51m	6'11" x 8'3"
Bathroom	2.10m x 1.91m	6'11" x 6'3"



Ground Floor

Kitchen/Dining	4.67m x 2.45m	15'4" x 8'0"
Living Room	3.62m x 4.39m _(max)	11'10" x 14'5" _(max)
Cloakroom	0.98m x 1.84m	3'3" x 6'0"

Clks - Cloakroom WS - Wardrobe Space (suggestion only, wardrobe not included)

Furniture arrangements are for illustrative purposes only. Items are not included, nor to scale.
The items shown in this key may be subject to change, and positions could vary from those indicated on this floorplan. Please refer to Sales Advisor for details of your selected plot. Computer generated image shown overleaf. External finishes, landscaping and configuration may vary from plot to plot. Please refer to Sales Advisor for further details. All dimensions are approximate and should not be used for carpet sizes, appliance spaces or furniture. We operate a policy of continuous improvement and individual features such as kitchen and bathroom layouts, doors, windows, garages and elevational treatments may vary from time to time. Consequently these particulars should be treated as general guidance only and do not constitute a contract, part of a contract or a warranty. SH/CB/500/S00/S/02/L.



The Tailor

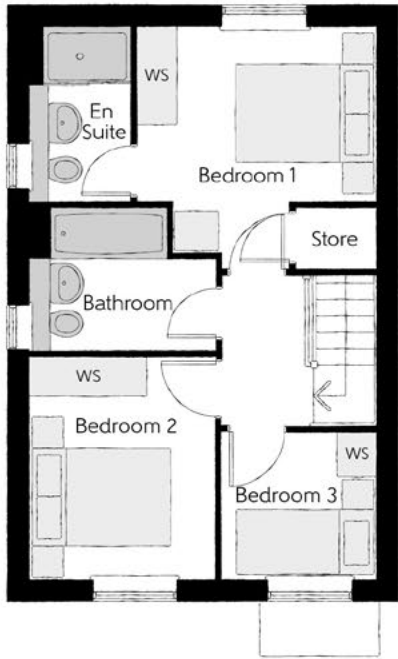
THREE BEDROOM HOME



Bellway

The Tailor

Three bedroom home



First Floor

Bedroom 1	3.29m x 3.34m (max)	10'10" x 11'0" (max)
Bedroom 1 En Suite	1.40m x 2.43m	4'7" x 8'0"
Bedroom 2	2.52m x 3.09m	8'3" x 10'2"
Bedroom 3	2.17m x 2.04m	7'1" x 6'8"
Bathroom	2.52m x 1.97m	8'3" x 6'5"



Ground Floor

Kitchen/Dining	4.78m x 3.45m (max)	15'8" x 11'4" (max)
Living Room	3.68m x 5.14m (max)	12'1" x 16'10" (max)
Cloakroom	1.01m x 1.66m	3'4" x 5'5"

Clks - Cloakroom WS - Wardrobe Space (suggestion only, wardrobe not included)

Furniture arrangements are for illustrative purposes only. Items are not included, nor to scale.
The items shown in this key may be subject to change, and positions could vary from those indicated on this floorplan. Please refer to Sales Advisor for details of your selected plot. Computer generated image shown overleaf. External finishes, landscaping and configuration may vary from plot to plot. Please refer to Sales Advisor for further details. All dimensions are approximate and should not be used for carpet sizes, appliance spaces or furniture. We operate a policy of continuous improvement and individual features such as kitchen and bathroom layouts, doors, windows, garages and elevational treatments may vary from time to time. Consequently these particulars should be treated as general guidance only and do not constitute a contract, part of a contract or a warranty. TA/CB/500/S00/S/01/L.



The Thespian

THREE BEDROOM HOME



Bellway

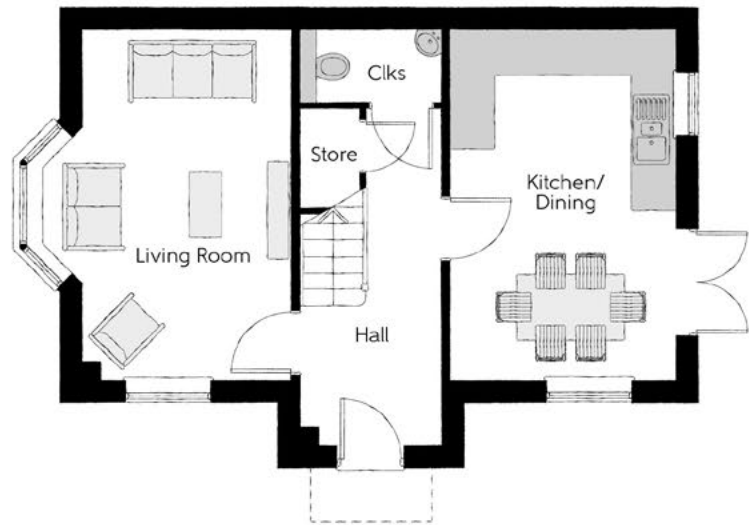
The Thespian

Three bedroom home



First Floor

Bedroom 1	2.95m x 3.56m	9'8" x 11'8"
Bedroom 1 En Suite	2.95m x 1.20m	9'8" x 3'11"
Bedroom 2	3.17m x 2.39m	10'5" x 7'10"
Bedroom 3	3.17m x 2.37m	10'5" x 7'9"
Bathroom	1.92m x 1.90m	6'4" x 6'3"



Ground Floor

Kitchen/Dining	3.11m x 4.85m	10'3" x 15'11"
Living Room	3.48m x 4.85m (max)	11'5" x 15'11" (max)
Cloakroom	1.92m x 0.96m	6'4" x 3'2"

Clks - Cloakroom WS - Wardrobe Space (suggestion only, wardrobe not included)

Furniture arrangements are for illustrative purposes only. Items are not included, nor to scale.

The items shown in this key may be subject to change, and positions could vary from those indicated on this floorplan. Please refer to Sales Advisor for details of your selected plot. Computer generated image shown overleaf. External finishes, landscaping and configuration may vary from plot to plot. Please refer to Sales Advisor for further details. All dimensions are approximate and should not be used for carpet sizes, appliance spaces or furniture. We operate a policy of continuous improvement and individual features such as kitchen and bathroom layouts, doors, windows, garages and elevational treatments may vary from time to time. Consequently these particulars should be treated as general guidance only and do not constitute a contract, part of a contract or a warranty. TH/CB/500/S00/D/01a/L.

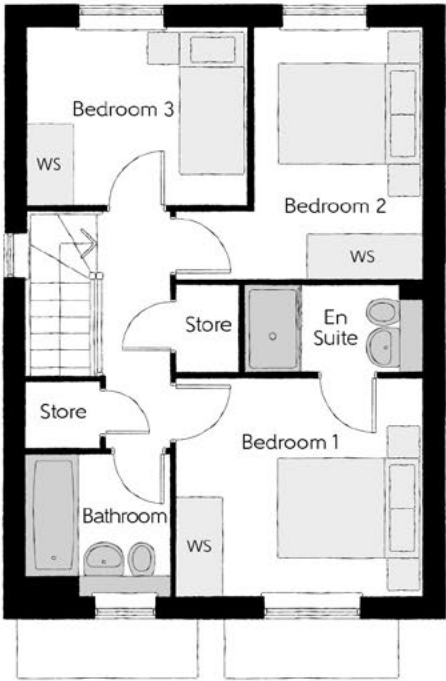


The Chandler

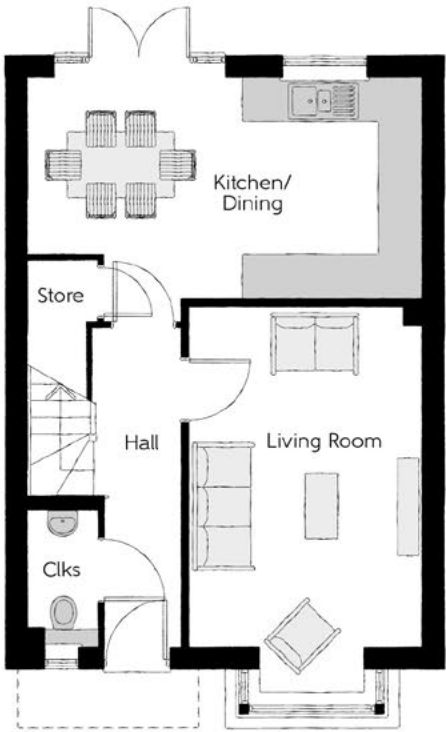
THREE BEDROOM HOME



Bellway



First Floor		
Bedroom 1	3.40m x 3.02m	11'2" x 9'11"
Bedroom 1 En Suite	2.44m x 1.20m	8'0" x 3'11"
Bedroom 2	3.40m x 3.50m (max)	11'2" x 11'6" (max)
Bedroom 3	3.04m x 2.47m	10'0" x 8'1"
Bathroom	1.97m x 1.96m	6'5" x 6'5"



Ground Floor		
Kitchen/Dining	5.46m x 3.39m	17'11" x 11'2"
Living Room	3.22m x 5.36m (inc. bay)	10'7" x 17'7" (inc. bay)
Cloakroom	0.95m x 1.90m	3'1" x 6'3"

Clks - Cloakroom WS - Wardrobe Space (suggestion only, wardrobe not included)

Furniture arrangements are for illustrative purposes only. Items are not included, nor to scale.
The items shown in this key may be subject to change, and positions could vary from those indicated on this floorplan. Please refer to Sales Advisor for details of your selected plot. Computer generated image shown overleaf. External finishes, landscaping and configuration may vary from plot to plot. Please refer to Sales Advisor for further details. All dimensions are approximate and should not be used for carpet sizes, appliance spaces or furniture. We operate a policy of continuous improvement and individual features such as kitchen and bathroom layouts, doors, windows, garages and elevational treatments may vary from time to time. Consequently these particulars should be treated as general guidance only and do not constitute a contract, part of a contract or a warranty. CH/CB/500/S00/S/01/M.



The Quilter

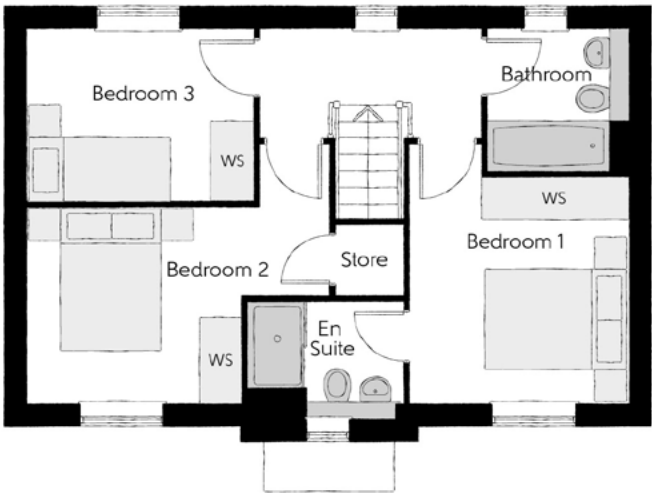
THREE BEDROOM HOME



Bellway

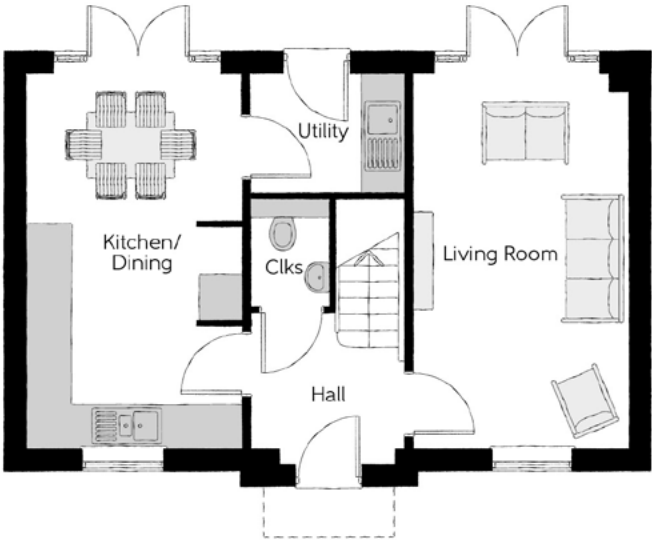
The Quilter

Three bedroom home



First Floor

Bedroom 1	3.02m x 3.12m	9'11" x 10'3"
Bedroom 1 En Suite	2.14m x 1.62m	7'0" x 5'4"
Bedroom 2	4.18m x 2.68m (max)	13'8" x 8'9" (max)
Bedroom 3	3.10m x 2.42m	10'2" x 7'11"
Bathroom	1.91m x 1.98m	6'3" x 6'6"



Ground Floor

Kitchen/Dining	2.96m x 5.19m	9'8" x 17'0"
Living Room	2.96m x 5.19m	9'8" x 17'0"
Utility	2.13m x 1.62m	7'0" x 5'4"
Cloakroom	1.07m x 1.53m	3'6" x 5'0"

Clks - Cloakroom WS - Wardrobe Space (suggestion only, wardrobe not included)

Furniture arrangements are for illustrative purposes only. Items are not included, nor to scale.

The items shown in this key may be subject to change, and positions could vary from those indicated on this floorplan. Please refer to Sales Advisor for details of your selected plot. Computer generated image shown overleaf. External finishes, landscaping and configuration may vary from plot to plot. Please refer to Sales Advisor for further details. All dimensions are approximate and should not be used for carpet sizes, appliance spaces or furniture. We operate a policy of continuous improvement and individual features such as kitchen and bathroom layouts, doors, windows, garages and elevational treatments may vary from time to time. Consequently these particulars should be treated as general guidance only and do not constitute a contract, part of a contract or a warranty. QU/CB/500/S00/D/01/K.



The Lymner

THREE BEDROOM HOME



Bellway

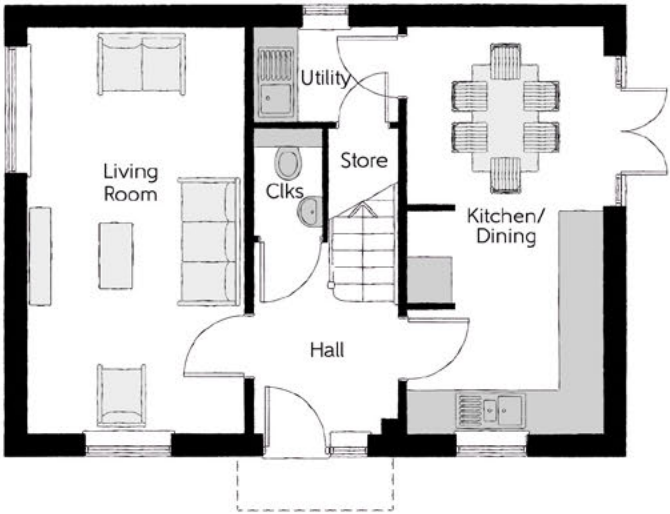
The Lymner

Three bedroom home



First Floor

Bedroom 1	2.77m x 4.07m	9'1" x 13'4"
Bedroom 1 En Suite	2.77m x 1.48m	9'1" x 4'10"
Bedroom 2	2.79m x 3.07m	9'2" x 10'1"
Bedroom 3	3.03 m x 2.48m	9'11" x 8'2"
Bathroom	2.26m x 1.92m	7'5" x 6'4"



Ground Floor

Kitchen/Dining	2.71m x 5.64m	8'11" x 18'6"
Living Room	3.01m x 5.64m	9'10" x 18'6"
Utility	1.98m x 1.32m	6'6" x 4'4"
Cloakroom	0.95m x 1.51m	3'1" x 4'11"

Clks - Cloakroom WS - Wardrobe Space (suggestion only, wardrobe not included)

Furniture arrangements are for illustrative purposes only. Items are not included, nor to scale.

The items shown in this key may be subject to change, and positions could vary from those indicated on this floorplan. Please refer to Sales Advisor for details of your selected plot. Computer generated image shown overleaf. External finishes, landscaping and configuration may vary from plot to plot. Please refer to Sales Advisor for further details. All dimensions are approximate and should not be used for carpet sizes, appliance spaces or furniture. We operate a policy of continuous improvement and individual features such as kitchen and bathroom layouts, doors, windows, garages and elevational treatments may vary from time to time. Consequently these particulars should be treated as general guidance only and do not constitute a contract, part of a contract or a warranty. LY/CB/500/500/D/01/C.



The Tanner

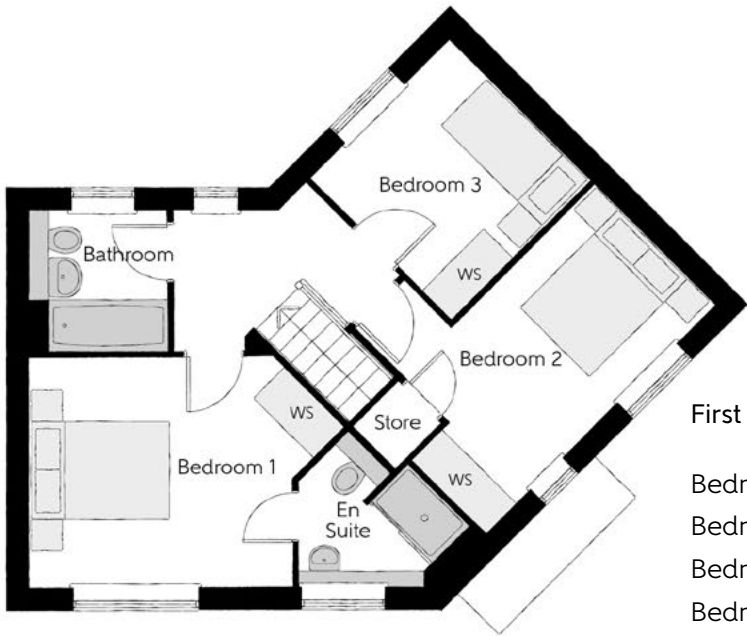
THREE BEDROOM HOME



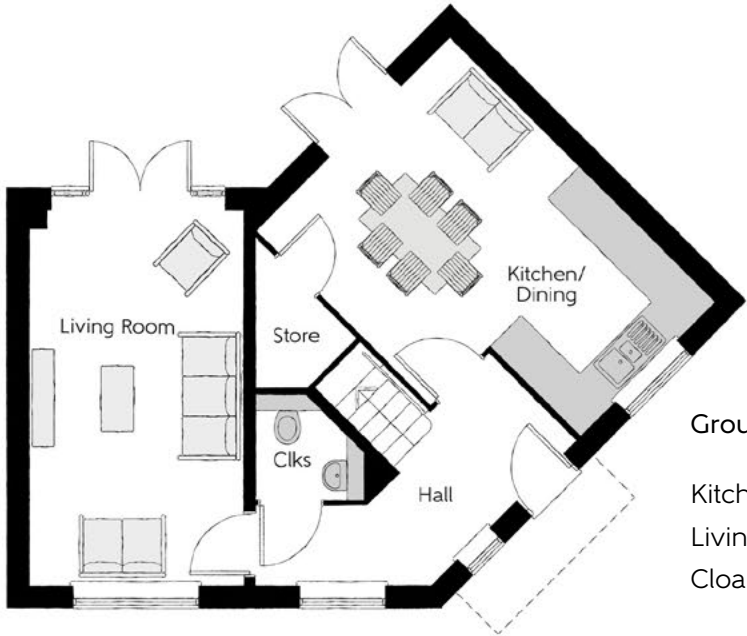
Bellway

The Tanner

Three bedroom home



First Floor		
Bedroom 1	4.36m x 3.18m <small>(max)</small>	14'4" x 10'5" <small>(max)</small>
Bedroom 1 En Suite	2.39m x 2.09m <small>(max)</small>	7'10" x 6'10" <small>(max)</small>
Bedroom 2	4.50m x 3.29m <small>(max)</small>	14'9" x 10'10" <small>(max)</small>
Bedroom 3	2.72m x 2.76m <small>(max)</small>	8'11" x 9'1" <small>(max)</small>
Bathroom	1.91m x 1.91m	6'3" x 6'3"



Ground Floor		
Kitchen/Dining	3.76m x 5.19m <small>(max)</small>	12'4" x 17'0" <small>(max)</small>
Living Room	3.01m x 5.19m	9'10" x 17'0" <small>(max)</small>
Cloakroom	1.50m x 1.47m <small>(max)</small>	4'11" x 4'10" <small>(max)</small>

Clks - Cloakroom WS - Wardrobe Space (suggestion only, wardrobe not included)

Furniture arrangements are for illustrative purposes only. Items are not included, nor to scale.
The items shown in this key may be subject to change, and positions could vary from those indicated on this floorplan. Please refer to Sales Advisor for details of your selected plot. Computer generated image shown overleaf. External finishes, landscaping and configuration may vary from plot to plot. Please refer to Sales Advisor for further details. All dimensions are approximate and should not be used for carpet sizes, appliance spaces or furniture. We operate a policy of continuous improvement and individual features such as kitchen and bathroom layouts, doors, windows, garages and elevational treatments may vary from time to time. Consequently these particulars should be treated as general guidance only and do not constitute a contract, part of a contract or a warranty. TN/CB/500/S00/S/01/E.



The CoppersmithLife

THREE BEDROOM HOME

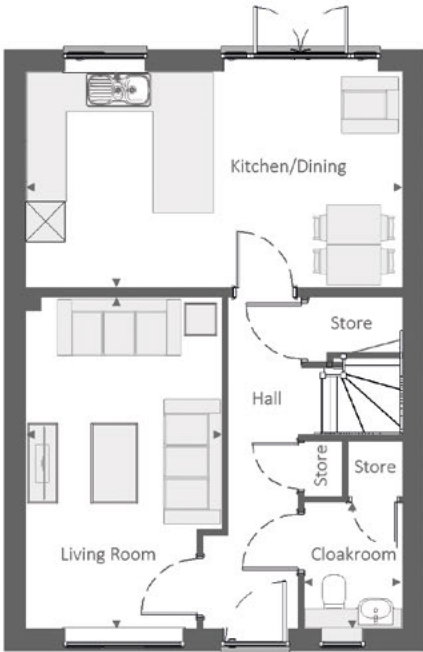


Bellway



First Floor

Bedroom 1	4.15 m	x	3.30 m	13'-7"	x	10'-10"
Bedroom 1 Ensuite	2.03 m	x	2.39 m	6'-8"	x	7'-10"
Bedroom 2	2.43 m	x	3.46 m	8'-0"	x	11'-4"
Bedroom 3	3.11 m	x	2.81 m	10'-3"	x	9'-3"
Bathroom	1.98 m	x	2.31 m	6'-6"	x	7'-7"



Ground Floor

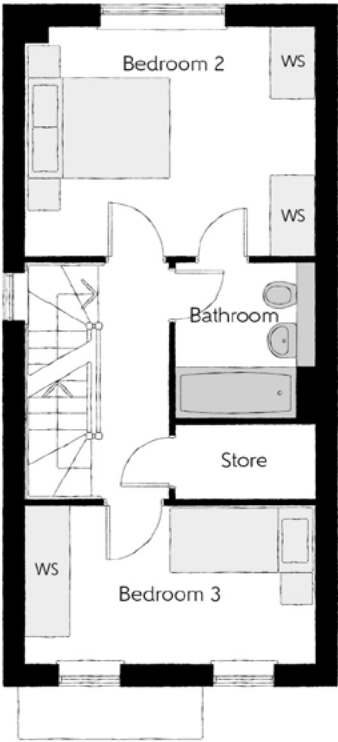
Kitchen/Dining	5.64 m	x	3.24 m	18'-6"	x	10'-7"
Living Room	2.94 m	x	4.95 m	9'-8"	x	16'-3"
Cloakroom	1.45 m	x	1.89 m	4'-9"	x	6'-3"

Cls - Cloakroom WS - Wardrobe Space (suggestion only, wardrobe not included)

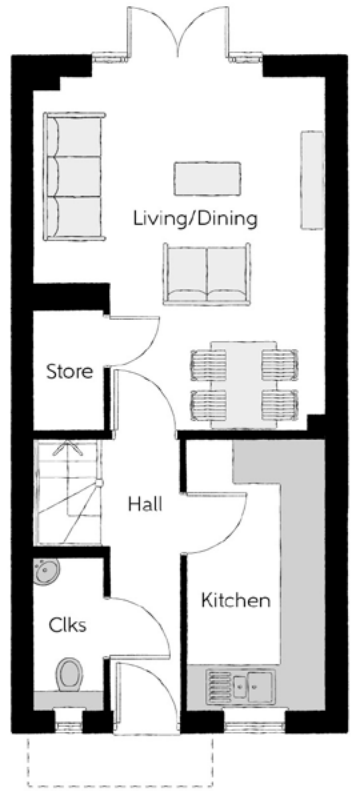
Furniture arrangements are for illustrative purposes only. Items are not included, nor to scale.
The items shown in this key may be subject to change, and positions could vary from those indicated on this floorplan. Please refer to Sales Advisor for details of your selected plot. Computer generated image shown overleaf. External finishes, landscaping and configuration may vary from plot to plot. Please refer to Sales Advisor for further details. All dimensions are approximate and should not be used for carpet sizes, appliance spaces or furniture. We operate a policy of continuous improvement and individual features such as kitchen and bathroom layouts, doors, windows, garages and elevational treatments may vary from time to time. Consequently these particulars should be treated as general guidance only and do not constitute a contract, part of a contract or a warranty. 1026 / SB (Rev H).



Second Floor		
Bedroom 1	2.95m x 4.13m (max) (max)	9'8" x 13'7" (max) (max)
Dressing	1.90m x 3.09m	6'3" x 10'1"
Bedroom 1 En Suite	2.00m x 2.08m	6'7" x 6'10"



First Floor		
Bedroom 2	3.99m x 3.16m	13'1" x 10'4"
Bedroom 3	3.99m x 2.17m	13'1" x 7'1"
Bathroom	1.90m x 2.15m	6'3" x 7'0"



Ground Floor		
Kitchen	1.89m x 3.72m	6'3" x 12'2"
Living/Dining	3.99m x 4.92m (max) (max)	13'1" x 16'2" (max) (max)
Cloakroom	0.95m x 2.11m	3'1" x 6'11"

Clks - Cloakroom WS - Wardrobe Space (suggestion only, wardrobe not included) [RW] - Roof Window ---- - Reduced Head Height

Furniture arrangements are for illustrative purposes only. Items are not included, nor to scale.
The items shown in this key may be subject to change, and positions could vary from those indicated on this floorplan. Please refer to Sales Advisor for details of your selected plot. Computer generated image shown overleaf. External finishes, landscaping and configuration may vary from plot to plot. Please refer to Sales Advisor for further details. All dimensions are approximate and should not be used for carpet sizes, appliance spaces or furniture. We operate a policy of continuous improvement and individual features such as kitchen and bathroom layouts, doors, windows, garages and elevational treatments may vary from time to time. Consequently these particulars should be treated as general guidance only and do not constitute a contract, part of a contract or a warranty. FL/CB/500/S00/S/01/D.

The Fletcher

THREE BEDROOM HOME





The Mason

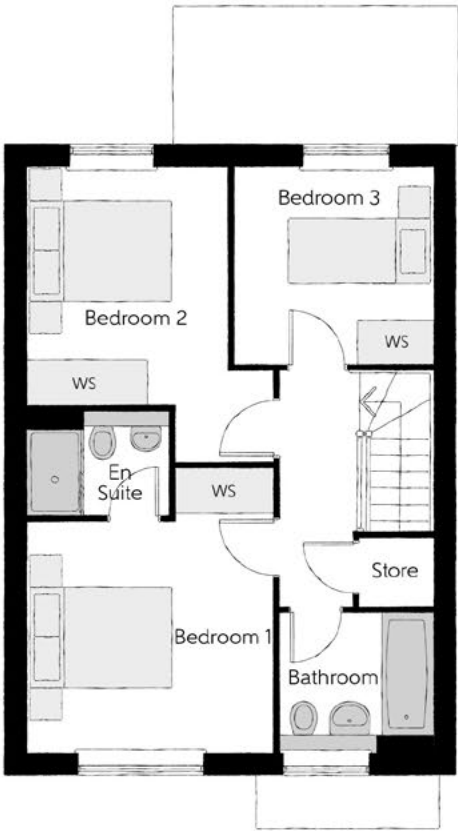
THREE BEDROOM HOME



Bellway

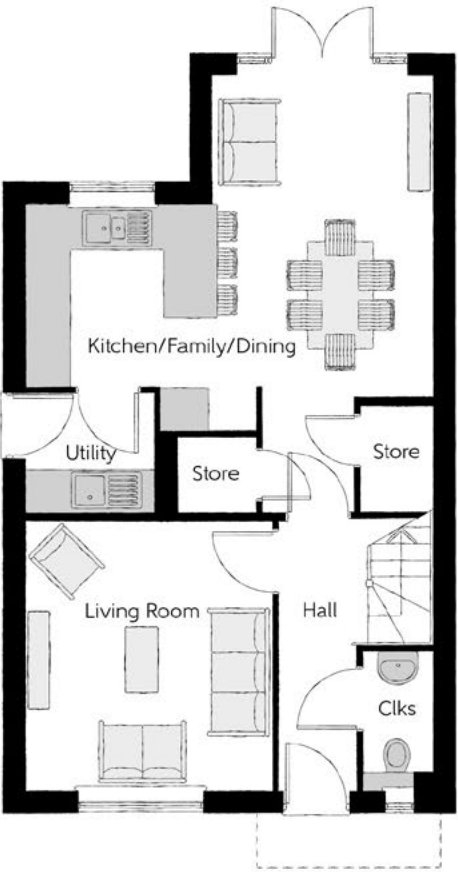
The Mason

Three bedroom home



First Floor

Bedroom 1	3.44m x 3.93m (max)	11'3" x 12'11" (max)
Bedroom 1 En Suite	1.98m x 1.46m	6'6" x 4'9"
Bedroom 2	2.81m x 4.09m (max)	9'3" x 13'5" (max)
Bedroom 3	2.74m x 2.74m	9'0" x 9'0"
Bathroom	2.11m x 1.91m	6'11" x 6'3"



Ground Floor

Kitchen/Family/Dining	5.64m x 6.05m (max) (max)	18'6" x 19'10" (max) (max)
Living Room	3.42m x 3.71m	11'3" x 12'2"
Utility	1.78m x 1.66m	5'10" x 5'5"
Cloakroom	0.96m x 1.91m	3'2" x 6'3"

Clks - Cloakroom WS - Wardrobe Space (suggestion only, wardrobe not included)

Furniture arrangements are for illustrative purposes only. Items are not included, nor to scale.

The items shown in this key may be subject to change, and positions could vary from those indicated on this floorplan. Please refer to Sales Advisor for details of your selected plot. Computer generated image shown overleaf. External finishes, landscaping and configuration may vary from plot to plot. Please refer to Sales Advisor for further details. All dimensions are approximate and should not be used for carpet sizes, appliance spaces or furniture. We operate a policy of continuous improvement and individual features such as kitchen and bathroom layouts, doors, windows, garages and elevational treatments may vary from time to time. Consequently these particulars should be treated as general guidance only and do not constitute a contract, part of a contract or a warranty. MA/CB/500/S00/D/01/Q.

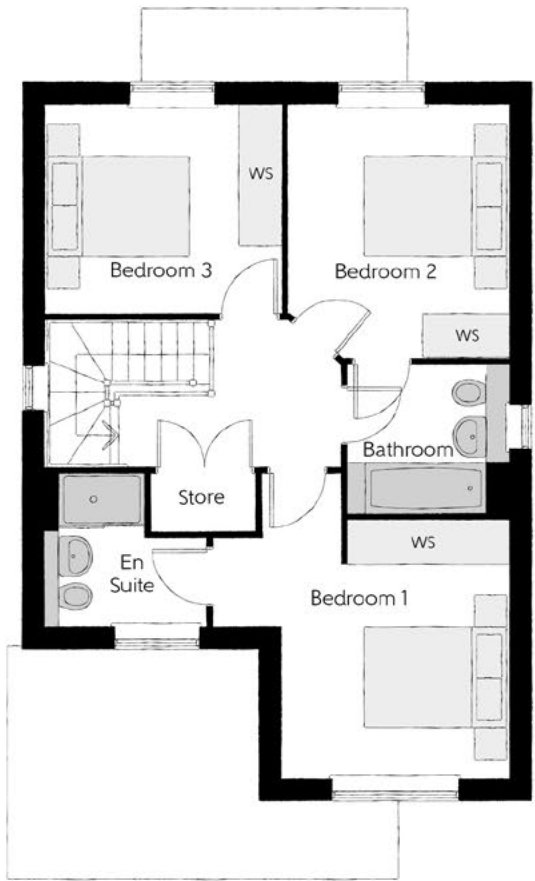


The Sawyer

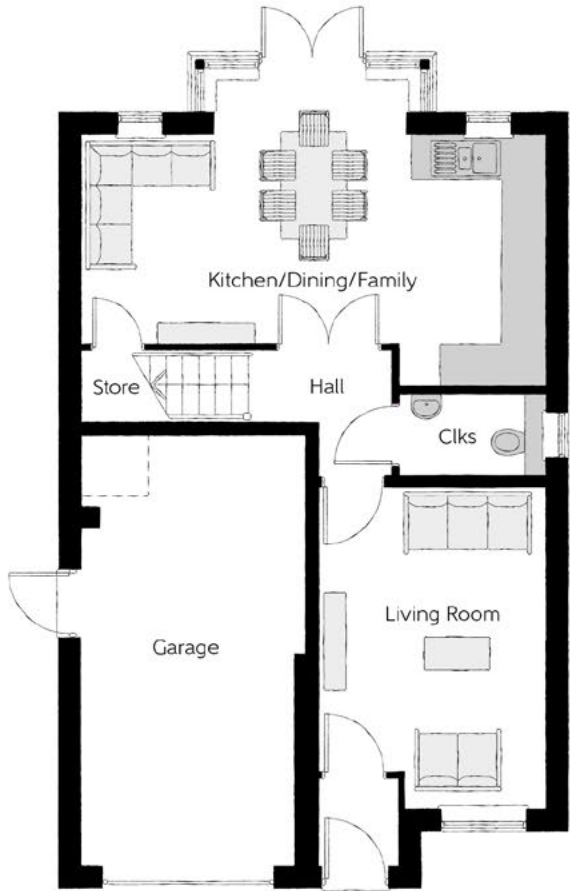
THREE BEDROOM HOME



Bellway



First Floor		
Bedroom 1	4.09m x 4.23m <small>(max)</small>	13'5" x 13'11" <small>(max)</small>
Bedroom 1 En Suite	2.25m x 2.10m <small>(max)</small>	7'4" x 6'11" <small>(max)</small>
Bedroom 2	3.04m x 3.54m <small>(max)</small>	10'0" x 11'7" <small>(max)</small>
Bedroom 3	3.30m x 2.91m <small>(max)</small>	10'10" x 9'7" <small>(max)</small>
Bathroom	2.20m x 2.04m <small>(max)</small>	7'3" x 6'8" <small>(max)</small>



Ground Floor		
Kitchen/Dining/Family	6.42m x 3.51m <small>(max)</small>	21'1" x 11'6" <small>(max)</small>
Living Room	3.16m x 4.45m <small>(max)</small>	10'4" x 14'7" <small>(max)</small>
Cloakroom	2.05m x 1.15m <small>(max)</small>	6'9" x 3'9" <small>(max)</small>
Garage	3.10m x 6.09m <small>(max)</small>	10'2" x 20'0" <small>(max)</small>

Clks - Cloakroom WS - Wardrobe Space (suggestion only, wardrobe not included)

Furniture arrangements are for illustrative purposes only. Items are not included, nor to scale.

The items shown in this key may be subject to change, and positions could vary from those indicated on this floorplan. Please refer to Sales Advisor for details of your selected plot. Computer generated image shown overleaf. External finishes, landscaping and configuration may vary from plot to plot. Please refer to Sales Advisor for further details. All dimensions are approximate and should not be used for carpet sizes, appliance spaces or furniture. We operate a policy of continuous improvement and individual features such as kitchen and bathroom layouts, doors, windows, garages and elevational treatments may vary from time to time. Consequently these particulars should be treated as general guidance only and do not constitute a contract, part of a contract or a warranty. SY/CB/500/S00/D/03/H.



The Wheelwright

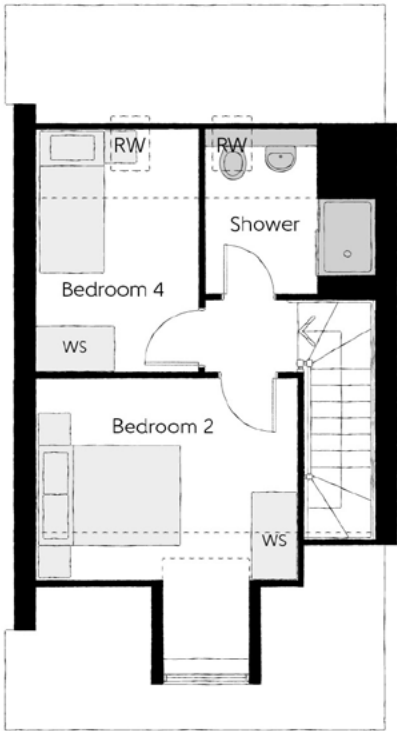
FOUR BEDROOM HOME



Bellway

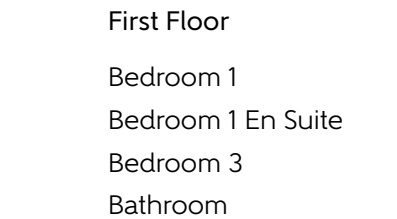
The Wheelwright

Four bedroom home



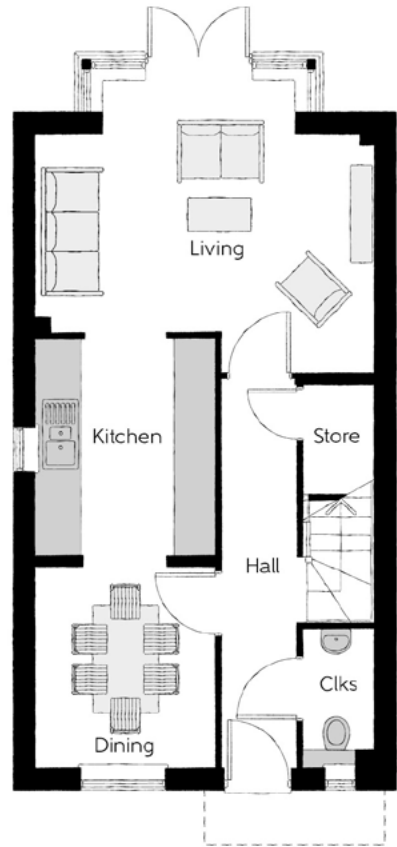
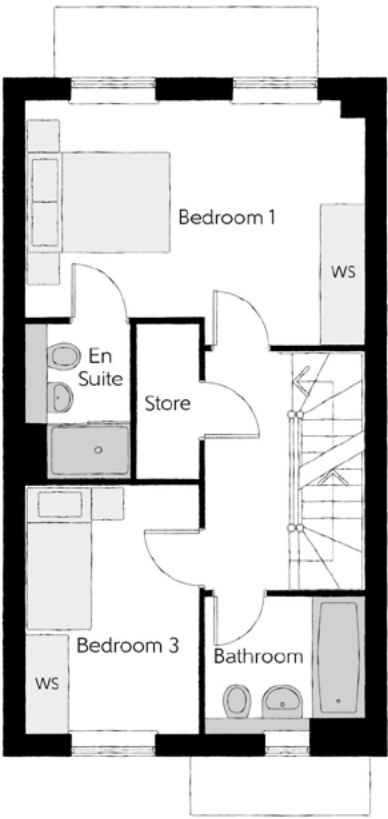
Second Floor

Bedroom 2	3.64m x 3.80m <small>(inc dormer)</small>	11'11" x 12'6" <small>(inc dormer)</small>
Bedroom 4	2.25m x 3.38m	7'5" x 11'1"
Shower	2.33m x 2.29m	7'8" x 7'6"



First Floor

Bedroom 1	4.67m x 3.37m <small>(max)</small>	15'4" x 11'1" <small>(max)</small>
Bedroom 1 En Suite	1.40m x 2.15m	4'7" x 7'1"
Bedroom 3	2.38m x 3.46m	7'10" x 11'4"
Bathroom	2.20m x 1.91m	7'3" x 6'3"



Ground Floor

Kitchen	2.49m x 3.02m	8'2" x 9'11"
Living	4.67m x 4.10m <small>(max)</small>	15'4" x 13'5" <small>(max)</small>
Dining	2.49m x 2.78m	8'2" x 9'1"
Cloakroom	0.95m x 1.90m	3'1" x 6'3"

Clks - Cloakroom WS - Wardrobe Space (suggestion only, wardrobe not included) RW - Roof Window ---- - Reduced Head Height

Furniture arrangements are for illustrative purposes only. Items are not included, nor to scale.
The items shown in this key may be subject to change, and positions could vary from those indicated on this floorplan. Please refer to Sales Advisor for details of your selected plot. Computer generated image shown overleaf. External finishes, landscaping and configuration may vary from plot to plot. Please refer to Sales Advisor for further details. All dimensions are approximate and should not be used for carpet sizes, appliance spaces or furniture. We operate a policy of continuous improvement and individual features such as kitchen and bathroom layouts, doors, windows, garages and elevational treatments may vary from time to time. Consequently these particulars should be treated as general guidance only and do not constitute a contract, part of a contract or a warranty. WH/CB/500/S00/S/01/D.



The Fisher

FOUR BEDROOM HOME



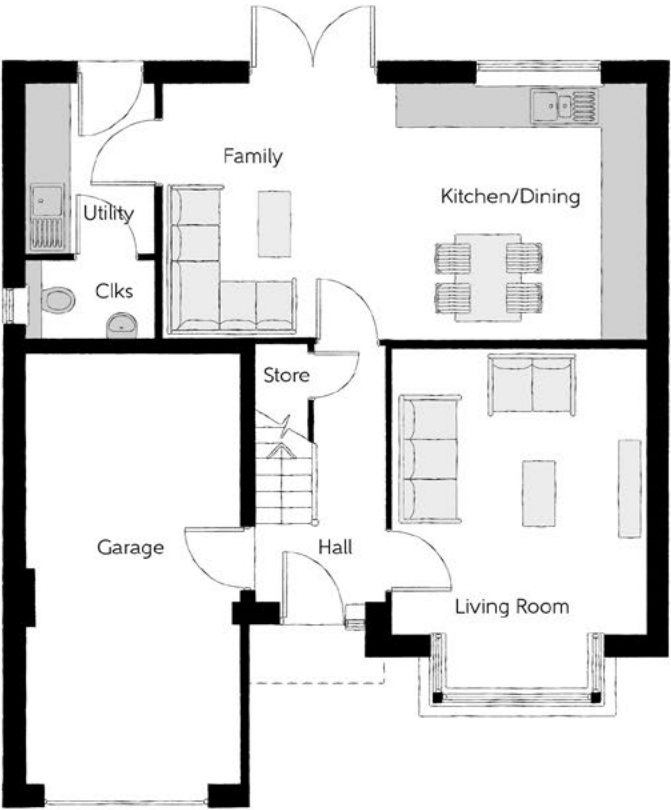
Bellway

The Fisher

Four bedroom home



First Floor		
Bedroom 1	3.55m x 3.96m	11'8" x 13'0"
Bedroom 1 En Suite	1.80m x 1.29m (max) (min)	5'11" x 4'3" (max) (min)
Bedroom 2	3.05m x 3.74m	10'0" x 12'3"
Bedroom 3	2.68m x 3.59m	8'10" x 11'10"
Bedroom 4	3.02m x 3.37m (max) (max)	9'11" x 11'1" (max) (max)
Bathroom	2.70m x 1.89m (max) (max)	8'11" x 6'2" (max) (max)



Ground Floor		
Living Room	3.52m x 3.95m (exc bay)	11'6" x 13'0" (exc bay)
Kitchen/Dining/family area	6.69m x 3.54m	21'11" x 11'8"
Utility Room	2.37m x 1.75m	7'9" x 5'9"
Cloakroom	1.75m x 1.08m	5'9" x 3'7"

Clks - Cloakroom WS - Wardrobe Space (suggestion only, wardrobe not included)

Furniture arrangements are for illustrative purposes only. Items are not included, nor to scale.
The items shown in this key may be subject to change, and positions could vary from those indicated on this floorplan. Please refer to Sales Advisor for details of your selected plot. Computer generated image shown overleaf. External finishes, landscaping and configuration may vary from plot to plot. Please refer to Sales Advisor for further details. All dimensions are approximate and should not be used for carpet sizes, appliance spaces or furniture. We operate a policy of continuous improvement and individual features such as kitchen and bathroom layouts, doors, windows, garages and elevational treatments may vary from time to time. Consequently these particulars should be treated as general guidance only and do not constitute a contract, part of a contract or a warranty. Non Artisan - Fisher.



The ReedmakerLife

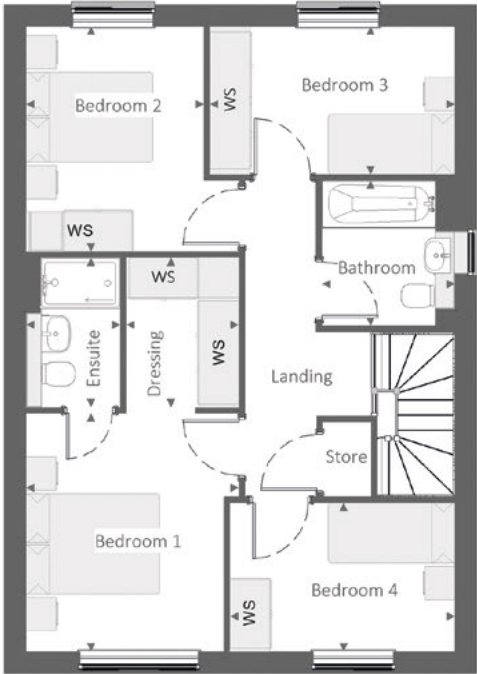
FOUR BEDROOM HOME



Bellway

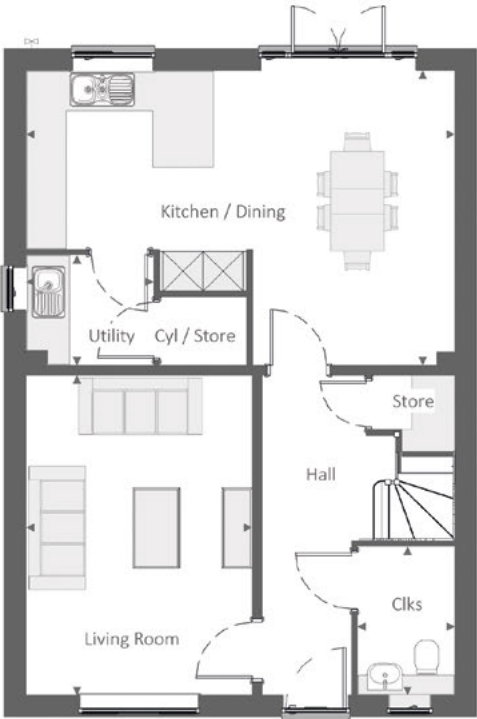
The ReedmakerLife

Four bedroom home



First Floor

Bedroom 1	3.19 m x 3.56 m	10'-5" x 11'-8"
Dressing	1.69 m x 2.24 m	5'-6" x 7'-4"
Bedroom 1 Ensuite	1.41 m x 2.24 m	4'-8" x 7'-4"
Bedroom 2	2.66 m x 3.37 m	8'-9" x 11'-1"
Bedroom 3	3.67 m x 2.21 m	12'-1" x 7'-3"
Bedroom 4	3.37 m x 2.22 m	11'-1" x 7'-4"
Bathroom	1.99 m x 2.18 m	6'-6" x 7'-2"



Ground Floor

Kitchen / Dining	6.42 m x 4.42 m	21'-1" x 14'-6"
Living Room	3.39 m x 4.78 m	11'-1" x 15'-8"
Utility	1.91 m x 1.65 m	6'-3" x 5'-5"
Cloakroom	1.46 m x 2.22 m	4'-10" x 7'-4"

Clks - Cloakroom WS - Wardrobe Space (suggestion only, wardrobe not included)

Furniture arrangements are for illustrative purposes only. Items are not included, nor to scale.

The items shown in this key may be subject to change, and positions could vary from those indicated on this floorplan. Please refer to Sales Advisor for details of your selected plot. Computer generated image shown overleaf. External finishes, landscaping and configuration may vary from plot to plot. Please refer to Sales Advisor for further details. All dimensions are approximate and should not be used for carpet sizes, appliance spaces or furniture. We operate a policy of continuous improvement and individual features such as kitchen and bathroom layouts, doors, windows, garages and elevational treatments may vary from time to time. Consequently these particulars should be treated as general guidance only and do not constitute a contract, part of a contract or a warranty. 1309 / SB (Rev M).



The Bowyer

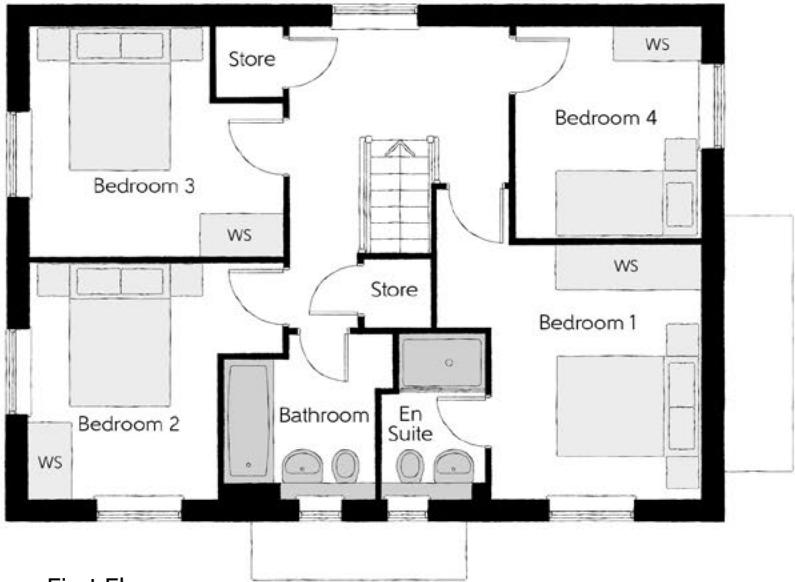
FOUR BEDROOM HOME



Bellway

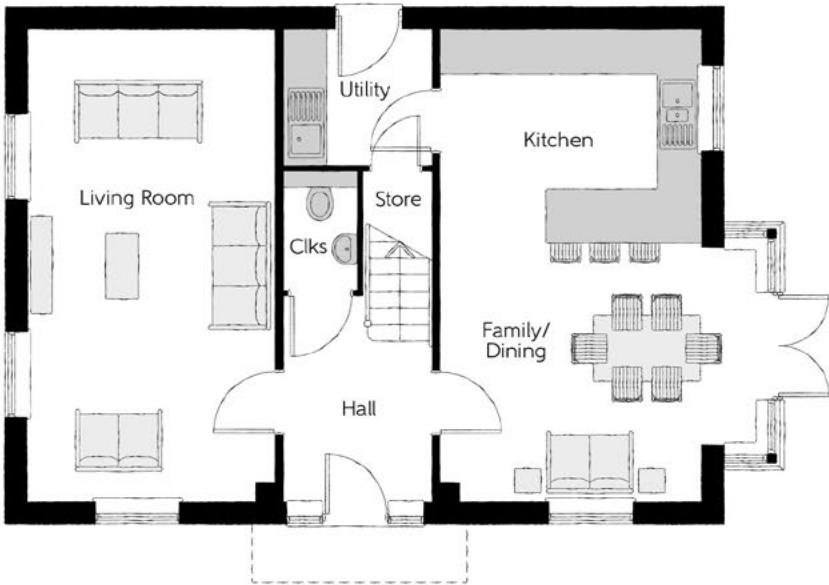
The Bowyer

Four bedroom home



First Floor

Bedroom 1	3.66m x 3.52m (max)	12'0" x 11'7" (max)
Bedroom 1 En Suite	1.44m x 2.25m	4'9" x 7'5"
Bedroom 2	3.53m x 3.27m (max)	11'7" x 10'9" (max)
Bedroom 3	3.53m x 3.18m (max)	11'7" x 10'5" (max)
Bedroom 4	2.58m x 2.93m	8'6" x 9'7"
Bathroom	2.35m x 2.25m (max)	7'9" x 7'5" (max)



Ground Floor

Kitchen/Dining	4.39m x 6.54m (inc. bay)	14'5" x 21'5" (inc. bay)
Living Room	3.42m x 6.54m	11'3" x 21'5"
Utility	2.03m x 1.87m	6'8" x 6'2"
Cloakroom	1.00m x 1.65m	3'3" x 5'5"

Clks - Cloakroom WS - Wardrobe Space (suggestion only, wardrobe not included)

Furniture arrangements are for illustrative purposes only. Items are not included, nor to scale.

The items shown in this key may be subject to change, and positions could vary from those indicated on this floorplan. Please refer to Sales Advisor for details of your selected plot. Computer generated image shown overleaf. External finishes, landscaping and configuration may vary from plot to plot. Please refer to Sales Advisor for further details. All dimensions are approximate and should not be used for carpet sizes, appliance spaces or furniture. We operate a policy of continuous improvement and individual features such as kitchen and bathroom layouts, doors, windows, garages and elevational treatments may vary from time to time. Consequently these particulars should be treated as general guidance only and do not constitute a contract, part of a contract or a warranty. BO/CB/500/S00/D/01/K.



The LorimerLife

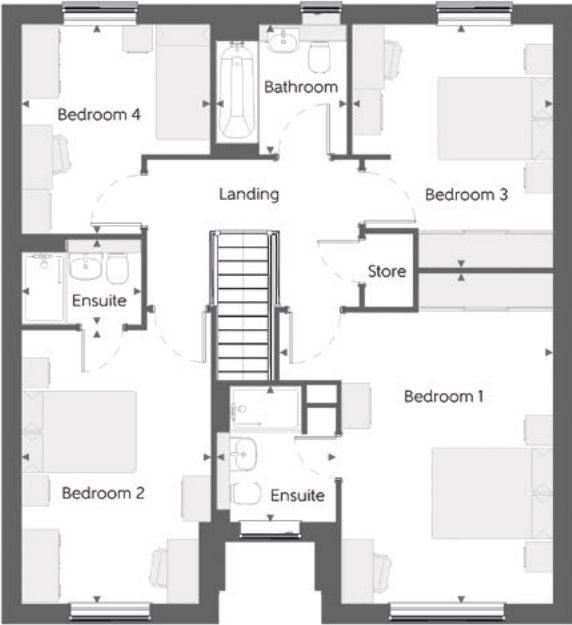
FOUR BEDROOM HOME



Bellway

The LorimerLife

Four bedroom home



First Floor			
Bedroom 1	4.52 m x 5.46 m	14'-10" x 17'-11"	
Bedroom 1 Ensuite	1.97 m x 2.26 m	6'-6" x 7'-5"	
Bedroom 2	3.14 m x 4.52 m	10'-4" x 14'-10"	
Bedroom 2 Ensuite	1.99 m x 1.41 m	6'-6" x 4'-8"	
Bedroom 3	3.32 m x 4.02 m	10'-11" x 13'-2"	
Bedroom 4	3.12 m x 3.46 m	10'-3" x 11'-4"	
Bathroom	2.17 m x 2.14 m	7'-1" x 7'-0"	



Ground Floor			
Kitchen / Dining	5.16 m x 3.28 m	16'-11" x 10'-9"	
Family	3.63 m x 3.28 m	11'-11" x 10'-9"	
Living Room	3.50 m x 4.38 m	11'-6" x 14'-5"	
Utility	1.91 m x 2.04 m	6'-3" x 6'-8"	
Cloakroom	1.50 m x 2.04 m	4'-11" x 6'-8"	
Garage	3.07 m x 6.11 m	10'-1" x 20'-1"	

Clks - Cloakroom WS - Wardrobe Space (suggestion only, wardrobe not included)

Furniture arrangements are for illustrative purposes only. Items are not included, nor to scale.
The items shown in this key may be subject to change, and positions could vary from those indicated on this floorplan. Please refer to Sales Advisor for details of your selected plot. Computer generated image shown overleaf. External finishes, landscaping and configuration may vary from plot to plot. Please refer to Sales Advisor for further details. All dimensions are approximate and should not be used for carpet sizes, appliance spaces or furniture. We operate a policy of continuous improvement and individual features such as kitchen and bathroom layouts, doors, windows, garages and elevational treatments may vary from time to time. Consequently these particulars should be treated as general guidance only and do not constitute a contract, part of a contract or a warranty. 1554 /SB (Rev K).



The Parkman

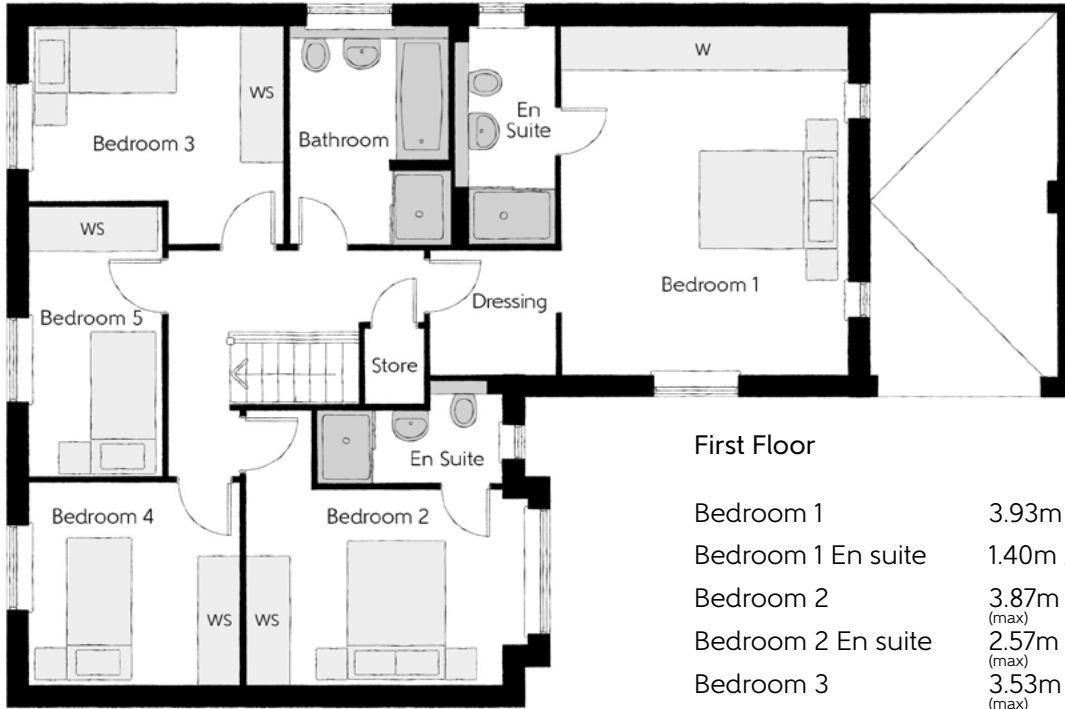
FIVE BEDROOM HOME



Bellway

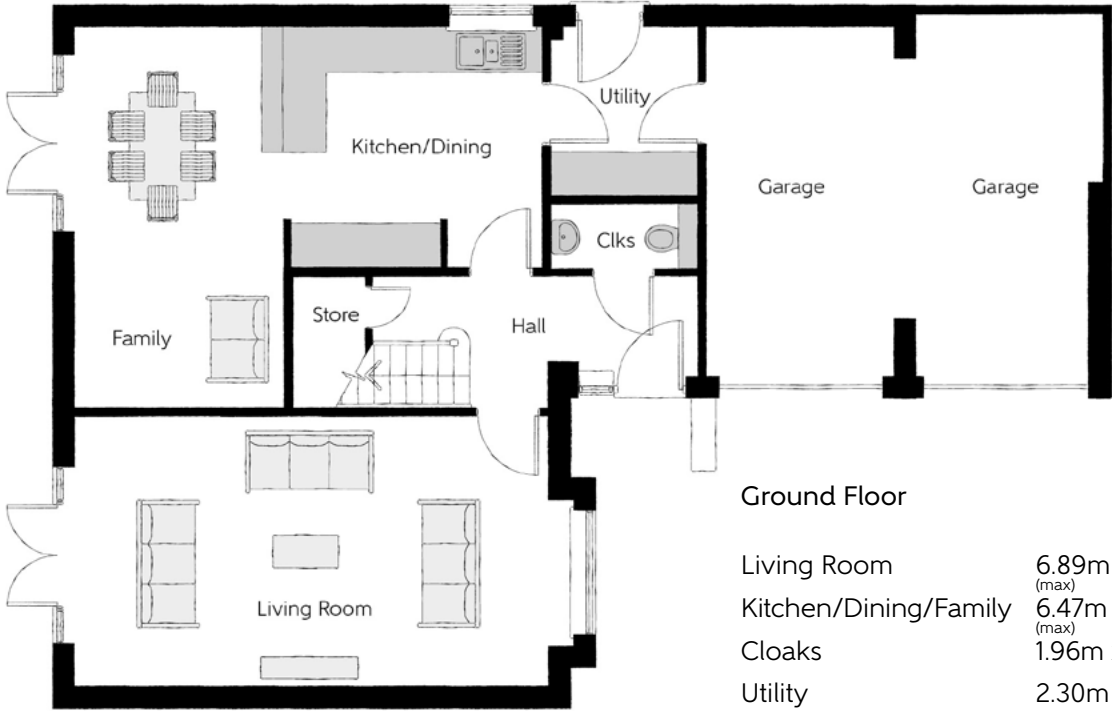
The Parkman

Five bedroom home



First Floor

Bedroom 1	3.93m x 4.81m	13'0" x 15'9"
Bedroom 1 En suite	1.40m x 3.10m	4'7" x 10'2"
Bedroom 2	3.87m x 2.68m (max)	12'8" x 8'10" (max)
Bedroom 2 En suite	2.57m x 1.43m (max)	8'5" x 4'8" (max)
Bedroom 3	3.53m x 2.41m (max)	11'7" x 7'10" (max)
Bedroom 4	2.92m x 2.76m	9'7" x 9'0"
Bedroom 5	1.82m x 3.75m	5'11" x 12'4"
Bathroom	2.19m x 3.01m	7'2" x 9'10"



Ground Floor

Living Room	6.89m x 3.72m (max)	22'7" x 12'2" (max)
Kitchen/Dining/Family	6.47m x 5.25m (max)	21'3" x 17'3" (max)
Cloaks	1.96m x 0.90m	6'5" x 2'11"
Utility	2.30m x 1.96m	7'7" x 6'5"

Clks - Cloakroom W - Wardrobe WS - Wardrobe Space (suggestion only, wardrobe not included)

Furniture arrangements are for illustrative purposes only. Items are not included, nor to scale.

The items shown in this key may be subject to change, and positions could vary from those indicated on this floorplan. Please refer to Sales Advisor for details of your selected plot. Computer generated image shown overleaf. External finishes, landscaping and configuration may vary from plot to plot. Please refer to Sales Advisor for further details. All dimensions are approximate and should not be used for carpet sizes, appliance spaces or furniture. We operate a policy of continuous improvement and individual features such as kitchen and bathroom layouts, doors, windows, garages and elevational treatments may vary from time to time. Consequently these particulars should be treated as general guidance only and do not constitute a contract, part of a contract or a warranty. Parkman.

Specification

FINISHES			1 & 2 Bedroom Homes	3 Bedroom Homes	4 Bedroom Homes	5 Bedroom Homes
	Ceilings	Crown White Matt Emulsion	•	•	•	•
	Walls	Crown White Matt Emulsion	•	•	•	•
	Floors	Concrete GF ; Chipboard FF	•	•	•	•
	Window Cills	White Gloss MDF	•	•	•	•
	Stairs	White Gloss MDF Strings	•	•	•	•
	Balusters	White Gloss Stop Chamfered Balusters	•	•	•	•
	Newel Posts	White Gloss Stop Chamfered Newels	•	•	•	•
		Oak Stop Chamfered Newels	•	•	•	
	Newel Caps	White Gloss Flat Top Newel Caps				•
		Oak Flat Top Newel Caps	•	•	•	
	Handrail	White Gloss Heavy Duty Handrail				•
		Oak Heavy Duty Handrail	•	•	•	
	Skirting	White Gloss 94x14 MDF Grooved & Chamfered				•
		White Gloss 120x14 MDF Grooved & Chamfered	•	•		
	Architrave	White Gloss 69x18 MDF Grooved & Chamfered			•	•
	Internal Doors	White Pre Finished Vertical Panel Internal Doors	•	•	•	•
	Ironmongery	Chrome SR100 Door Furniture	•	•	•	•
		Chrome SR700 Door Furniture				•
	Wardrobes	Sliding Fitted Wardrobes to Bed 1				•
	Carcass	Premium Grade 18mm thk Colour Matched Carcass	•	•	•	•
	Frontals	Bellway Band B options^	•	•		
		Bellway Band C options^			•	
		Bellway Band D options^				•
	Units	Frontal Matching Table Ends	•	•		
		Unit Framing			•	•
	Worktops	40mm Square Edge Worktops with Upstand	•	•	•	•
	Kitchen Sink	Leisure Linear Single Bowl Stainless Steel Sink inc. Sink Liner	•			
		Leisure Linear Bowl & Half Stainless Steel Sink inc. Sink Liner		•		
		Leisure Euroline Bowl & Half Stainless Steel Sink inc. Sink Liner			•	
		Leisure Seattle Bowl & Half Stainless Steel Sink inc. Sink Liner				•
	Utility Sink	Leisure Linear Single Bowl Stainless Steel Sink inc. Sink Liner		•		
		Leisure Euroline Single Bowl Stainless Steel Sink inc. Sink Liner			•	
		Leisure Seattle Single Bowl Stainless Steel Sink inc. Sink Liner				•
	Appliances Oven	Zanussi Single Oven ZOB343X	•	•		
		Zanussi Single Oven ZOB35471XK			•	
		AEG Single Oven BPK642020M				•
	Appliances Hob	Zanussi 4 Burner Gas Hob ZGH62414XS & SS Splashback	•	•		
		Zanussi 4 Burner Gas Hob ZGH65411XB & SS Splashback			•	
		AEG 5 Burner Gas Hob HG755450SY & SS Splashback				•
	Appliances Extractor	Zanussi Cooker Hood Extractor ZHC60156X	•	•	•	
		AEG Cooker Hood Extractor DKB4950M				•
	Appliances Extractor (Island)	Cooker Hood Extractor LF1519X††			•	
		AEG Cooker Hood Extractor DIE6180HM††				•
	Appliances Microwave	Zanussi Microwave ZKK47901XK			•	
		AEG Microwave KMK721000M				•
	Appliances Fridge Freezer	Fridge/Freezer Space Only	•	•		
		Zanussi 70/30 Fridge/Freezer ZBB28441SV			•	
		Zanussi 70/30 Fridge/Freezer ZBB28441SV (2no)				•
	Appliance Dishwasher	Removable Unit**	•	•		
		Zanussi Dishwasher ZDT21006FA			•	•
	Appliance Washing Machine	Washing Machine Space Only	•	•	•	•
	Cloaks - WC	Roca DEBBA WC with Concealed Cistern & PL1 Flush Plate†††	•	•	•	•
	Cloaks - Basin	Roca Wash Hand Basin††	•	•	•	•
	Cloaks - Brassware	Bristan PISA Small Basin Chrome Mixer Tap	•	•	•	•
	Cloaks - Tiling	Splashback Tiling to Wash Hand Basin with Flat Edge White Trim	•	•	•	•
	Bathroom - WC	Roca DEBBA WC with Concealed Cistern & PL1 Flush Plate†††	•	•	•	•
	Bathroom - Basin	Roca DEBBA 500 WHB with Full Pedestal	•	•		
		Roca DEBBA 550 WHB with Semi Pedestal			•	•
	Bathroom - Bath	Roca MALAGA Acrylic Bath & Rigid Bath Panel	•	•	•	•
	Bathroom - Brassware	Bristan PISA Chrome Bath & Basin Mixer Taps	•	•		
		Bristan SAIL Chrome Bath & Basin Mixer Taps			•	•

WETROOMS			1 & 2 Bedroom Homes	3 Bedroom Homes	4 Bedroom Homes	5 Bedroom Homes
	Bathroom - Shower Tray	Mira FLIGHT Low Shower Tray with Mira ELEVATE Enclosure††	•	•	•	•
	Bathroom - Shower	Mira RELATE EV Thermostatic Shower‡	•	•		
		Mira RELATE EV Thermostatic Shower^^			•	•
	Bathroom - Tiling	1/2 Height Tiling (Band 2) to Wet Walls with Flat Edged White Trim*†	•	•		
		1/2 Height Tiling (Band 3) to Wet Walls with Flat Edged Chrome Trim*†			•	•
	En Suite - WC	Roca DEBBA WC with Concealed Cistern & PL1 Flush Plate†††	•	•	•	•
	En Suite - Basin	Roca DEBBA 450 WHB with Full Pedestal	•	•		
		Roca DEBBA 550 WHB with Semi Pedestal			•	•
	En Suite - Bath	Roca MALAGA Acrylic Bath & Rigid Bath Panel††				•
	En Suite - Brassware	Bristan PISA Chrome Bath & Basin Mixer Taps	•	•		
		Bristan SAIL Chrome Bath & Basin Mixer Taps			•	•
	En Suite - Shower Tray	Mira FLIGHT Low Shower Tray with Mira ELEVATE Enclosure††	•	•	•	•
	En Suite - Shower	Mira RELATE EV Thermostatic Shower***	•	•	•	
		Mira RELATE ERD Thermostatic Shower				•
	En Suite - Tiling	1/2 Height Tiling (Band 2) to Wet Walls with Flat Edged White Trim†	•	•		
		1/2 Height Tiling (Band 3) to Wet Walls with Flat Edged Chrome Trim†			•	•
	Boiler	Ideal LOGIC Combination Boiler	•	•		
		Ideal LOGIC Boiler & ThermaQ Evocyl HW Cylinder			•	•
	Controls	Dual Zoned 3 way Heating Programmer	•	•	•	•
	Radiator	Stelrad Compact Steel Panel Radiators with Grilles	•	•	•	•
	Towel Warmers	Flat Chrome to Bathroom Only	•	•	•	•
		Flat Chrome to Bathroom & En Suite 1 Only				•
	Ventilation	Window Trickle Ventilators with Mechanical Extract Fans (system 1)	•	•	•	•
	Consumer Unit	Wylex Consumer Unit	•	•	•	•
	USB Locations	Kitchen, Lounge & Bedroom 1 ONLY	•	•	•	•
	Shaver/Toothbrush Point	Bathroom ONLY	•	•	•	•
	Communications - Satellite	Dual Connection Satellite Points to Lounge	•	•	•	•
	Security - Fire	Optical Smoke Detector	•	•	•	•
	Sockets & Switches	Electrium CASA White Fittings	•	•	•	•
	Lighting	Pendant Fitting to Habitable Rooms	•	•	•	•
	Lighting - Kitchen	White Recessed Spot Lights Warm White	•	•		
		Polished Chrome Recessed Spot Lights Warm White			•	•
	Lighting - Kitchen Under Unit	High Output Tri-Light				•
	Lighting - Bathroom & En-Suites	White Recessed Spot Lights Cool White	•	•		
		Polished Chrome Recessed Spot lights Cool White			•	•
	Lighting - External	External Light Clifton Brushed Steel Up/Down	•	•	•	•
	Communications - TV	TV Point to Lounge, Family, Bedroom 1 & Study	•	•	•	•
	Communications - Data	Cat 6 Network Point to Lounge, Family, Bedroom 1 & Study	•	•	•	•
	Communications - Voice	Telephone Point to Lounge	•	•	•	•
	Broadband	Ultrafast Fibre Connectivity	•	•	•	•
	Security - Carbon	Honeywell XC70 Carbon Monoxide Detector	•	•	•	•
	Footpath & Patio	Grey PCC Flags 450x450x38's	•	•	•	•
	Drives	Bitmac Black‡‡	•	•	•	•
	Landscaping - Front	Medallion Turf & Landscape Planting‡‡‡	•	•	•	•
	Landscaping - Rear	Rotovated Topsoil	•	•	•	•
	Maintenance	External Tap	•	•	•	•
	Number Plaque	Artisan Number Plaque	•	•	•	•

* full height around bath where shower provided as standard

** at build stage

*** flow regulator fitted to bath mixer if serving single thermostatic shower & fed via combination boiler

† full height to shower enclosure

†† housetype dependent

††† inc soft close mechanism seat on 4 beds ONLY

‡ over bath ONLY incorporating MIRA bath screen 1.1863.004 where no shower elsewhere in dwelling

‡‡ plot dependent

‡‡‡ plot specific, refer to site layout

^ refer to site landscape layout

^^ soft close mechanism to doors and drawers

^^^ where provision of shower tray allows

Information correct at time of going to print. In the event of product discontinuation or issues with stock availability Bellway will always fit a suitable alternative.



Dedicated to delivering quality

An enhanced specification is the hallmark of The Artisan Collection.

All of our homes are equipped with superior fixtures and fittings, which dovetails perfectly with our focus on design and attention to detail.

Expertly crafted using state-of-the-art materials, your brand new home is finished to a high standard so you can start enjoying it the moment you get your keys.

"The overall finish of the home is perfect – Bellway really pay attention to every detail. The team were amazing and supported us throughout the process."

SAMI AND SARA,
HANWOOD PARK

Homes to love, built with care

From the first day you visit our sales centre, to the day you move in and beyond, we aim to provide a level of service and after-sales care that is second to none.

A number of quality checks are carried out on each of our new homes through the construction process and on completion. Once your home has passed all of our quality checks, you will be invited to attend your Home Demonstration which will provide an opportunity for you to understand the various elements of your new home. On move in day, our site and sales teams will be there to ensure that everything goes as smoothly as possible.

Once you've settled into your new home, Bellway has experienced after-sales teams to provide support and assistance whenever you need it. Our homes come with a 10-year NHBC Buildmark policy, or an equivalent warranty from another provider. This includes deposit protection from exchange of contracts, a two-year builder warranty from legal completion, and then eight years of structural defects insurance cover.*

We are confident that our approach to building and selling quality homes, coupled with our customer care processes, will provide you with many years of enjoyment in your new home.



*For more details, visit the NHBC website at www.nhbc.co.uk/homeowners and view the 'Welcome to NHBC warranty and insurance' brochure, or refer to the brochure of your alternative warranty provider.



How to find us



Bellway



Bellway abides by the New Homes Quality Code (NHQC), an independent industry code established to champion quality new homes and deliver better outcomes for customers.

