

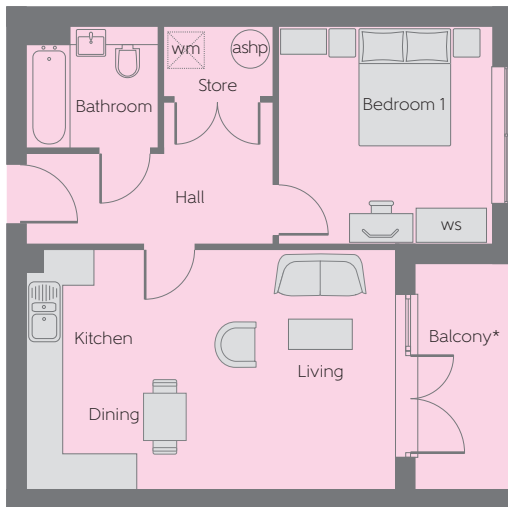
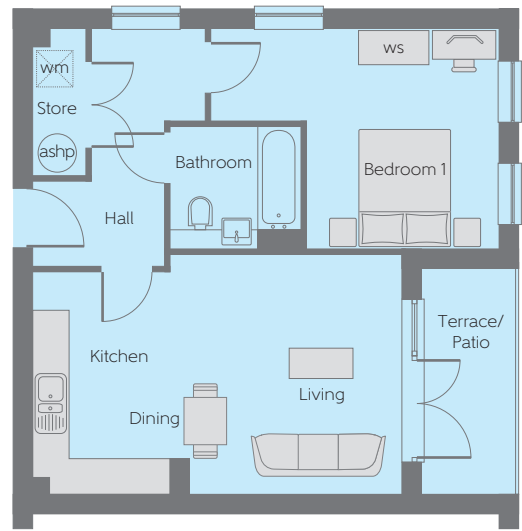
Rydal House

ONE, TWO AND THREE BEDROOM APARTMENTS



The Trent – Plot 7

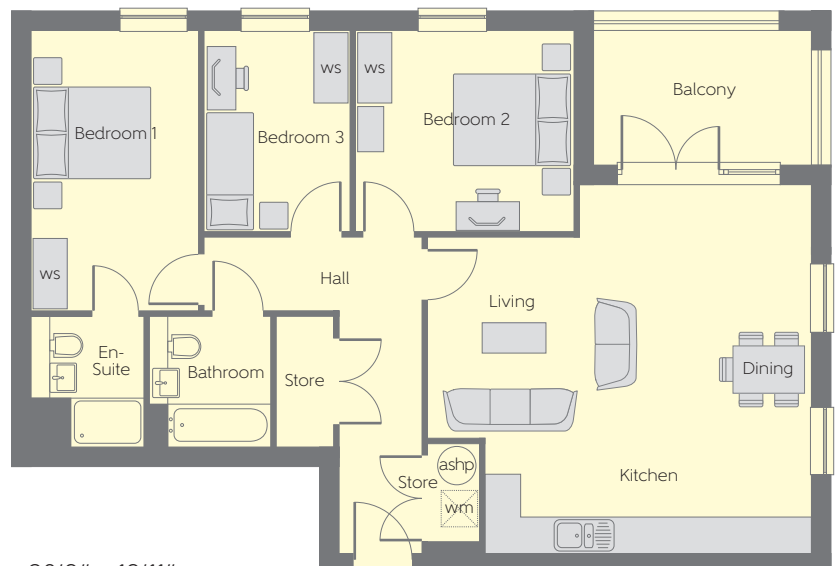
Kitchen/Living/Dining	6.03m x 4.01m (max) (max)	19'9" x 13'2" (max) (max)
Bedroom	4.72m x 3.61m (max) (max)	15'6" x 11'10" (max) (max)
Bathroom	2.15m x 2.00m	7'1" x 6'7"



The Ouse – Plots 8, 10 & 14

Kitchen/Living/Dining	6.07m x 3.92m	19'11" x 12'10"
Bedroom	3.62m x 3.52m (max) (max)	11'10" x 11'7" (max) (max)
Bathroom	2.15m x 2.00m	7'1" x 6'7"

*Patio/Terrace/Balcony plot dependant, please speak to sales advisor.

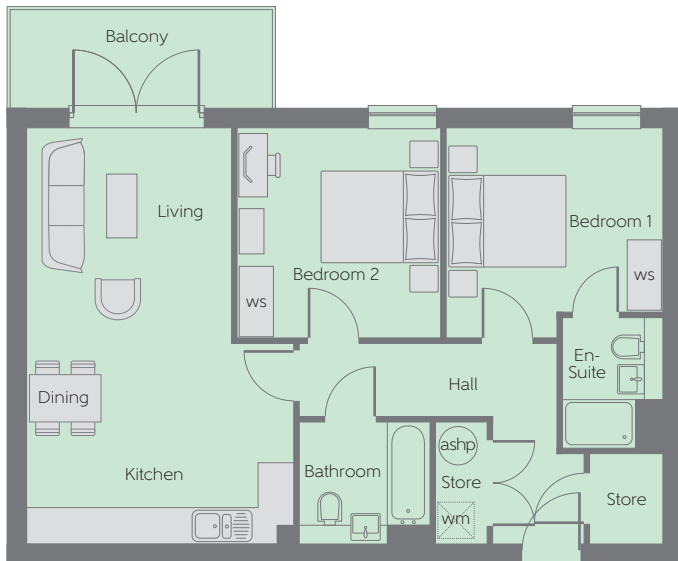
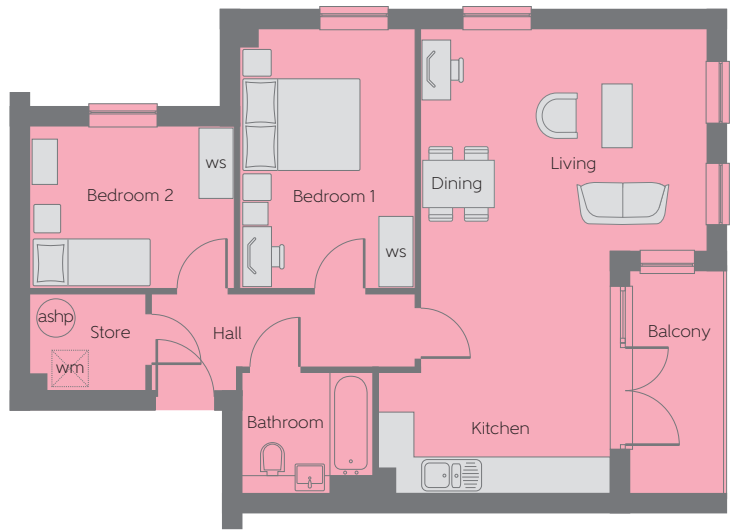


The Swale – Plots 12 & 16

Kitchen/Living/Dining	6.32m x 6.07m (max) (max)	20'9" x 19'11" (max) (max)
Bedroom 1	4.61m x 2.75m	15'1" x 9'0"
En Suite	2.15m x 1.85m	7'1" x 6'1"
Bedroom 2	3.59m x 3.31m	11'9" x 10'10"
Bedroom 3	3.31m x 2.41m	10'10" x 7'11"
Bathroom	2.15m x 2.00m	7'1" x 6'7"

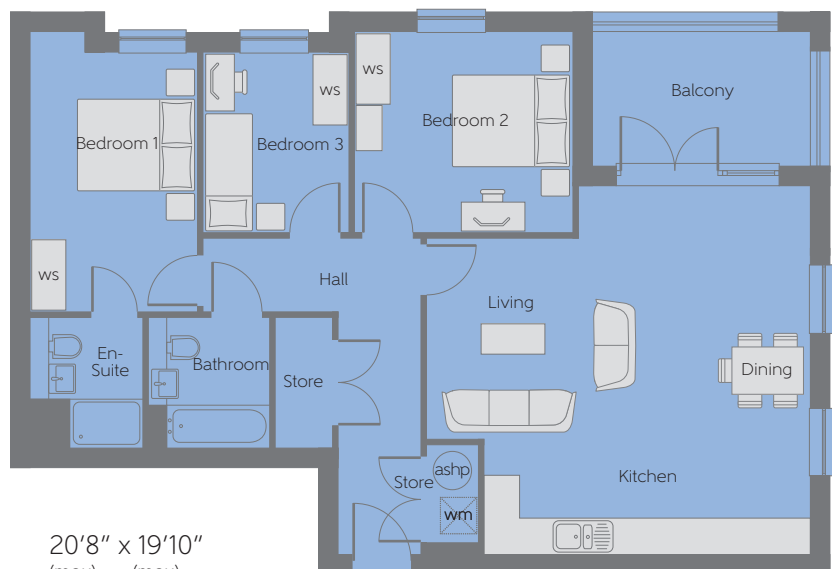
The Witham – Plots 9 & 13

Kitchen/Living/Dining	7.67m x 4.72m (max) (max)	25'2" x 15'6" (max) (max)
Bedroom 1	4.27m x 2.85m	14'0" x 9'4"
Bedroom 2	3.42m x 2.67m	11'2" x 8'9"
Bathroom	2.15m x 2.00m	7'1" x 6'7"



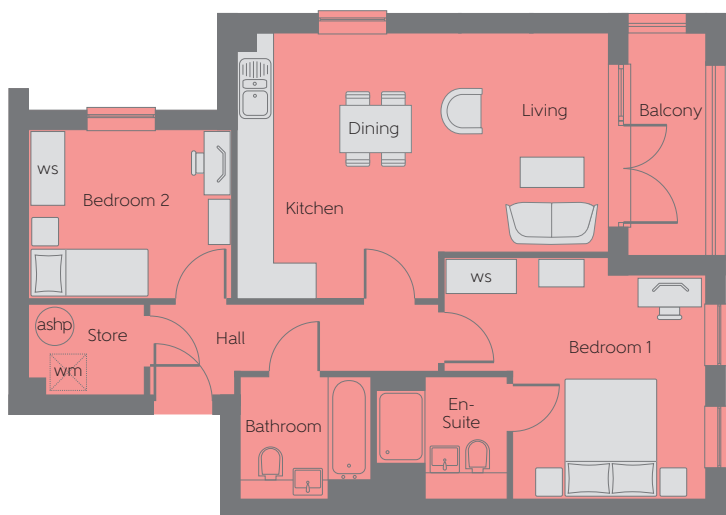
The Morar – Plots 11 & 15

Kitchen/Living/Dining	6.86m x 4.39m (max) (max)	22'6" x 14'5" (max) (max)
Bedroom 1	3.57m x 3.45m (max) (max)	11'9" x 11'4" (max) (max)
En Suite	2.15m x 1.65m	7'1" x 5'5"
Bedroom 2	3.45m x 3.36m	11'4" x 11'0"
Bathroom	2.15m x 2.00m	7'1" x 6'7"



The Dart – Plot 20

Kitchen/Living/Dining	6.30m x 6.04m (max) (max)	20'8" x 19'10" (max) (max)
Bedroom 1	4.27m x 2.75m (max) (max)	14'0" x 9'0" (max) (max)
En Suite	2.15m x 1.85m	7'1" x 6'1"
Bedroom 2	3.61m x 3.31m	11'10" x 10'10"
Bedroom 3	2.97m x 2.39m	9'9" x 7'10"
Bathroom	2.00m x 2.15m	6'7" x 7'1"

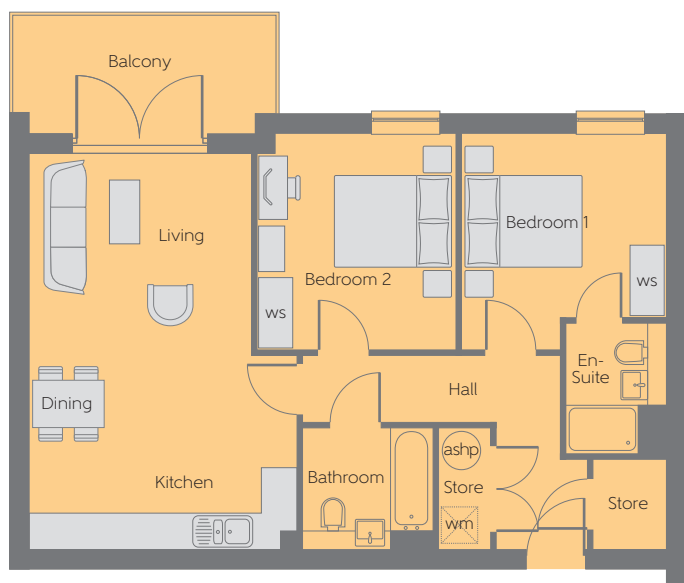


The Ribble – Plot 17

Kitchen/Living/Dining	6.07m x 4.37m (max) (max)	19'11" x 14'4" (max) (max)
Bedroom 1	4.31m x 3.67m (min) (max)	14'2" x 12'0" (min) (max)
En Suite	2.15m x 1.88m	7'1" x 6'2"
Bedroom 2	3.39m x 2.74m	11'2" x 9'0"
Bathroom	2.15m x 2.00m	7'1" x 6'7"

The Tay – Plot 18

Kitchen/Living/Dining	6.07m x 3.88m (max) (max)	19'11" x 12'9" (max) (max)
Bedroom	4.20m x 3.52m (max) (max)	13'9" x 11'7" (max) (max)
Bathroom	2.15m x 2.00m	7'1" x 6'7"



The Tyne – Plot 19

Kitchen/Living/Dining	6.52m x 4.39m (max) (max)	21'5" x 14'5" (max) (max)
Bedroom 1	3.56m x 3.38m (max) (max)	11'8" x 11'1" (max) (max)
En Suite	2.15m x 1.65m	7'1" x 5'5"
Bedroom 2	3.56m x 3.28m (max) (max)	11'8" x 10'9" (max) (max)
Bathroom	2.15m x 2.00m	7'1" x 6'7"



First Floor



Third Floor



Ground Floor



Second Floor

ashp – Air source heat pump
ws – Wardrobe Space (suggestion only, wardrobe not included)
wm – Washing Machine Space

Furniture arrangements are for illustrative purposes only. Items are not included, nor to scale.

The items shown in this key may be subject to change, and positions could vary from those indicated on this floorplan. Please refer to Sales Advisor for details of your selected plot. Computer generated image shown overleaf. External finishes, landscaping and configuration may vary from plot to plot. Please refer to Sales Advisor for further details. All dimensions are approximate and should not be used for carpet sizes, appliance spaces or furniture. We operate a policy of continuous improvement and individual features such as kitchen and bathroom layouts, doors, windows, garages and elevational treatments may vary from time to time. Consequently these particulars should be treated as general guidance only and do not constitute a contract, part of a contract or a warranty.