



Navigators Walk

Navigators Walk is a development of 2, 3 and 4-bedroom homes, located in Margate, Kent.



THE
ARTISAN
COLLECTION

Bellway



Culture, charm and convenience

Everything you need for a better quality of life

Enveloped in Georgian architecture and brimming with amenities and culture, Margate, a town renowned for its cultural vibrancy and coastal beauty, offers a wealth of shopping, dining and leisure opportunities just minutes from Navigators Walk. Margate Old Town, a seven-minute cycle ride away, is a lively shopping destination featuring an eclectic mix of independent shops, vintage stores and charming cafés. The town's dining scene is equally diverse, ranging from fresh seafood to vegan cafés and classic British fish and chips.

Essentials are easily accessible with several supermarkets and local grocers nearby, while Westwood Cross shopping and leisure park, just a four-minute drive away, provides major retail outlets, a cinema and a variety of eateries.

For entertainment and leisure, Margate offers something for everyone. Dreamland, the town's iconic vintage amusement park, provides year-round fun with rides, live music and events. The Turner Contemporary, a renowned art gallery, adds a cultural dimension to the town, showcasing both contemporary and historical art. For those focused on fitness, Hartsdown Leisure Centre, a short five-minute bike ride away, offers a gym, swimming pool and a range of fitness classes.

Margate's outdoor spaces are equally impressive. Margate Main Sands, a Blue Flag sandy beach, is just seven minutes away by bike and is perfect for swimming and sunbathing. The Viking Coastal Trail provides scenic routes for cycling and walking along the picturesque coastline, while Monkton Nature Reserve, with its 16 acres of woodland, chalk cliffs and ponds, offers peaceful walking trails for nature lovers.

Education in Margate is well catered for, with a variety of primary and secondary schools available. Salmestone Primary School and Nursery, along with Hartsdown Academy, are both within walking distance of Navigators Walk, making it an ideal location for families.

You'll find even more choice in the surrounding area, with neighbouring towns like Broadstairs and Ramsgate offering additional beaches, shops and dining options just a short drive away.

Margate is also well-connected, making it a convenient location for commuters. Southeastern trains provide direct rail links to London, while the town's proximity to the A28, A29 and M2 ensures excellent road connectivity to surrounding areas, including Canterbury, Whitstable and the Kent Downs Area of Outstanding Natural Beauty.

Coastal living at its finest

Modern homes just moments from the beach

Navigators Walk, located on Nash Road in Margate, Kent, offers an exceptional collection of 2, 3 and 4-bedroom homes designed to meet the needs of modern living. With high energy efficiency, light-filled, versatile interiors and parking for all plots, these homes are perfect for first-time buyers, growing families and downsizers

looking for a better quality of life. Situated in a charming rural community close to the golden sandy beaches and fresh sea breeze of the vibrant Margate coastline, Navigators Walk seamlessly combines the tranquillity of countryside living with the excitement of coastal life.





Development plan



- Key to plan**
- v Visitor parking
 - s/s Sub Station
 - Street light
- Material Finishes**
- (W) - Weatherboard Version
 - (HW) - Half Weatherboard Version

The site plan is drawn to show the relative position of individual properties. NOT TO SCALE. This is a two dimensional drawing and will not show land contours and gradients, boundary treatments, landscaping or local authority street lighting. Footpaths subject to change. For details of individual properties and availability please refer to our Sales Advisor.

2 Bedroom Homes

-  **The Potter**
Plots 23, 24, 65, 66, 67, 75, 76, 119, 120, 121, 125, 126, 127, 128, 162, 163, 189, 190, 210, 211, 246, 247, 248 & 249

3 Bedroom Homes

-  **The Spinner**
Plots 8, 30, 31, 40, 41, 62, 63, 69, 70, 109, 110, 132, 133, 146 & 147
-  **The Quilter**
Plots 10, 52, 53, 174 & 204
-  **The Thespian**
Plots 11, 45, 56, 57, 61, 68, 73, 106, 118, 138, 170, 171, 203, 209, 222, 225 & 250
-  **The Yalding**
Plots 15, 28, 34, 112, 116, 134, 191 & 223
-  **The Otham**
Plots 16, 29, 35, 113, 117, 135, 192 & 224
-  **The Chandler**
Plots 17, 18, 54, 55, 104, 105, 148, 149, 164, 165, 168, 169, 172 & 173
-  **The Mason**
Plots 38, 39, 42, 43, 107, 108, 144, 145, 180 & 181
-  **The Fletcher**
Plots 77, 78, 79, 237, 238, 239, 243, 244 & 245

4 Bedroom Homes

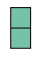


-  **The Weaver**
Plots 1, 6, 44, 51, 74, 139, 151, 158, 159, 161, 193, 197, 198 & 202
-  **The Chartham**
Plots 2, 9, 22, 48, 49, 64, 137, 152, 167, 177, 182, 186, 205 & 207
-  **The Scrivener**
Plots 3, 5, 20, 47, 58, 60, 111, 131, 136, 153, 154, 175 & 200
-  **The Philosopher**
Plots 4, 12, 13, 19, 21, 36, 37, 50, 59, 140, 141, 142, 143, 155, 156, 157, 160, 166, 178, 183, 184, 185, 187, 194, 195, 196, 199, 201, 206 & 208
-  **The Chilham**
Plots 7, 25, 26, 27, 32, 33, 71, 72, 114, 115, 122, 123, 124, 240, 241 & 242
-  **The Bowyer**
Plots 14, 46, 129, 130, 150, 176, 179 & 188

2-3 Bedroom Homes

-  **Affordable Homes**

2-4 Bedroom Homes

Shared Ownership Homes

-  **The Baker**
Plots 80, 81, 82, 86, & 218
-  **The Cartographer**
Plots 83 & 84
-  **The Tillman**
Plots 85, 87, 88, 212, 213, 217 & 219



The Potter

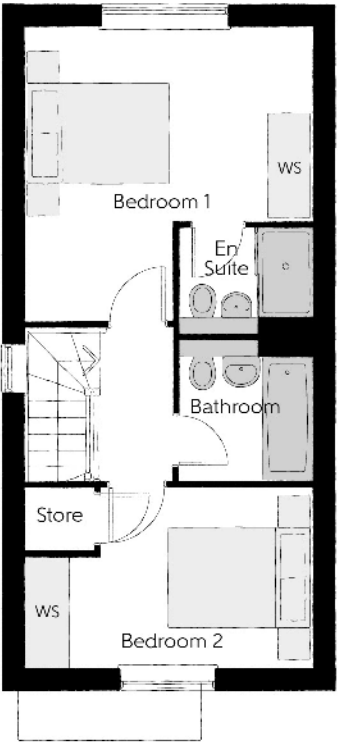
TWO BEDROOM HOME



Bellway

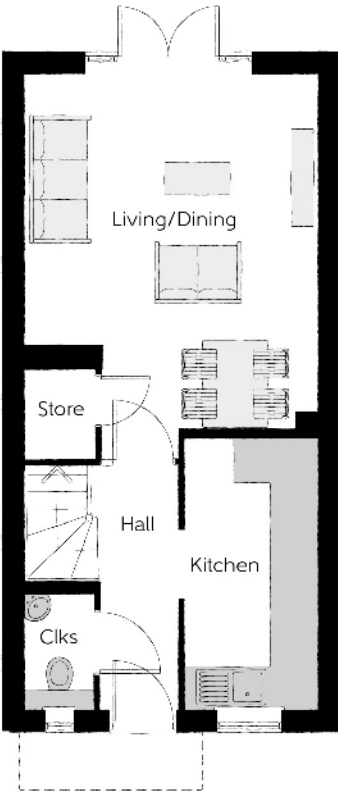
The Potter

Two bedroom home



First Floor

Bedroom 1	3.99m x 4.04m <small>(max)</small>	13'1" x 13'3" <small>(max)</small>
Bedroom 1 En Suite	1.86m x 1.48m	6'1" x 4'10"
Bedroom 2	3.99m x 2.47m <small>(max)</small>	13'1" x 8'1" <small>(max)</small>
Bathroom	1.86m x 1.92m	6'1" x 6'3"



Ground Floor

Kitchen	1.80m x 3.72m	5'11" x 12'2"
Living/Dining	3.99m x 4.92m <small>(max)</small>	13'1" x 16'2" <small>(max)</small>
Cloakroom	0.94m x 1.60m	3'1" x 5'3"

Clks - Cloakroom WS - Wardrobe Space (suggestion only, wardrobe not included)

Furniture arrangements are for illustrative purposes only. Items are not included, nor to scale.
The items shown in this key may be subject to change, and positions could vary from those indicated on this floorplan. Please refer to Sales Advisor for details of your selected plot. Computer generated image shown overleaf. External finishes, landscaping and configuration may vary from plot to plot. Please refer to Sales Advisor for further details. All dimensions are approximate and should not be used for carpet sizes, appliance spaces or furniture. We operate a policy of continuous improvement and individual features such as kitchen and bathroom layouts, doors, windows, garages and elevational treatments may vary from time to time. Consequently these particulars should be treated as general guidance only and do not constitute a contract, part of a contract or a warranty.



The Spinner

THREE BEDROOM HOME



The Spinner

Three bedroom home



Second Floor

Bedroom 1	3.64m x 3.89m (max) (max)	11'11" x 12'7" (max) (max)
Dressing	2.24m x 2.29m	7'3" x 7'6"
Bedroom 1 En Suite	2.34m x 2.29m	7'8" x 7'6"



Ground Floor

Kitchen	2.49m x 3.02m	8'2" x 9'11"
Dining	2.49m x 2.84m	8'2" x 9'4"
Living	4.67m x 3.32m (max) (max)	15'4" x 10'8" (max) (max)
Cloakroom	0.95m x 1.90m	3'1" x 6'3"



First Floor

Bedroom 2	3.13m x 4.21m (max)	10'3" x 13'10" (max)
Bedroom 2 En Suite	1.45m x 1.90m	4'9" x 6'3"
Bedroom 3	4.67m x 2.47m	15'4" x 8'1"
Bathroom	2.38m x 1.93m	7'10" x 6'4"

Clks - Cloakroom WS - Wardrobe Space (suggestion only, wardrobe not included) RW - Roof Window ---- - Reduced Head Height

Furniture arrangements are for illustrative purposes only. Items are not included, nor to scale.

The items shown in this key may be subject to change, and positions could vary from those indicated on this floorplan. Please refer to Sales Advisor for details of your selected plot. Computer generated image shown overleaf. External finishes, landscaping and configuration may vary from plot to plot. Please refer to Sales Advisor for further details. All dimensions are approximate and should not be used for carpet sizes, appliance spaces or furniture. We operate a policy of continuous improvement and individual features such as kitchen and bathroom layouts, doors, windows, garages and elevational treatments may vary from time to time. Consequently these particulars should be treated as general guidance only and do not constitute a contract, part of a contract or a warranty.



The Quilter

THREE BEDROOM HOME



Bellway

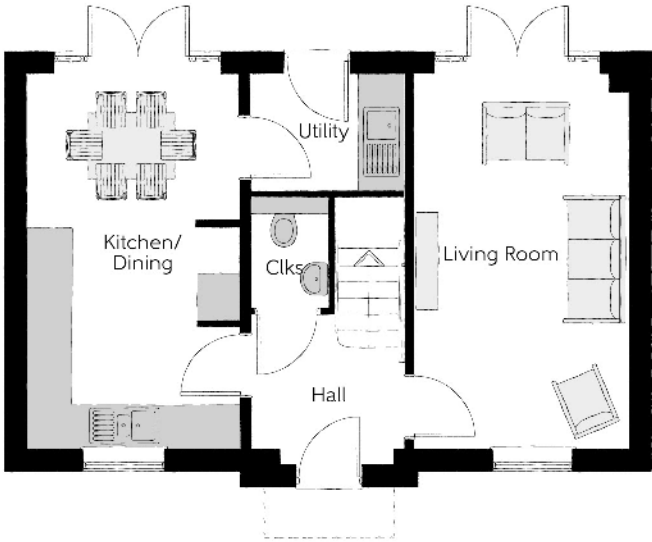
The Quilter

Three bedroom home



First Floor

Bedroom 1	3.02m x 3.12m	9'11" x 10'3"
Bedroom 1 En Suite	2.14m x 1.62m	7'0" x 5'4"
Bedroom 2	4.18m x 2.68m (max)	13'8" x 8'9" (max)
Bedroom 3	3.10m x 2.42m	10'2" x 7'11"
Bathroom	1.91m x 1.98m	6'3" x 6'6"



Ground Floor

Kitchen/Dining	2.96m x 5.19m	9'8" x 17'0"
Living Room	2.96m x 5.19m	9'8" x 17'0"
Utility	2.13m x 1.62m	7'0" x 5'4"
Cloakroom	1.07m x 1.53m	3'6" x 5'0"

Clks - Cloakroom WS - Wardrobe Space (suggestion only, wardrobe not included)

Furniture arrangements are for illustrative purposes only. Items are not included, nor to scale.

The items shown in this key may be subject to change, and positions could vary from those indicated on this floorplan. Please refer to Sales Advisor for details of your selected plot. Computer generated image shown overleaf. External finishes, landscaping and configuration may vary from plot to plot. Please refer to Sales Advisor for further details. All dimensions are approximate and should not be used for carpet sizes, appliance spaces or furniture. We operate a policy of continuous improvement and individual features such as kitchen and bathroom layouts, doors, windows, garages and elevational treatments may vary from time to time. Consequently these particulars should be treated as general guidance only and do not constitute a contract, part of a contract or a warranty.

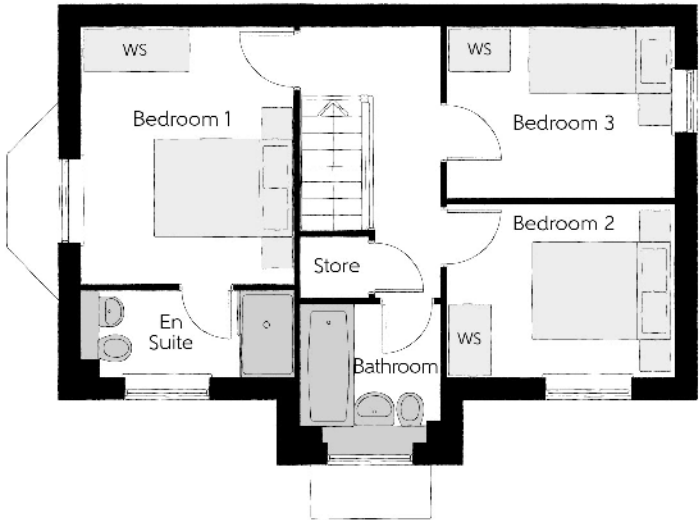


The Thespian

THREE BEDROOM HOME

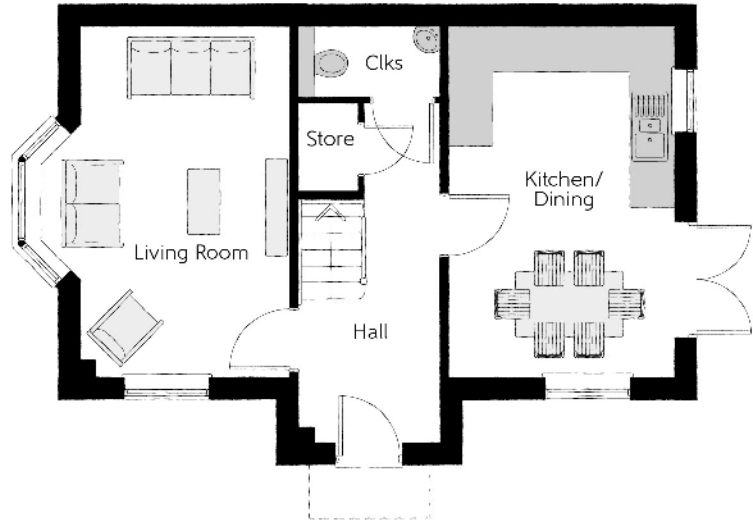


Bellway



First Floor

Bedroom 1	2.95m x 3.56m	9'8" x 11'8"
Bedroom 1 En Suite	2.95m x 1.20m	9'8" x 3'11"
Bedroom 2	3.17m x 2.39m	10'5" x 7'10"
Bedroom 3	3.17m x 2.39m	10'5" x 7'8"
Bathroom	1.92m x 1.90m	6'4" x 6'3"



Ground Floor

Kitchen/Dining	3.11m x 4.85m	10'3" x 15'11"
Living Room	3.48m x 4.85m (max)	11'5" x 15'11" (max)
Cloakroom	1.92m x 0.96m	6'4" x 3'2"

Clks - Cloakroom WS - Wardrobe Space (suggestion only, wardrobe not included)

Furniture arrangements are for illustrative purposes only. Items are not included, nor to scale.
The items shown in this key may be subject to change, and positions could vary from those indicated on this floorplan. Please refer to Sales Advisor for details of your selected plot. Computer generated image shown overleaf. External finishes, landscaping and configuration may vary from plot to plot. Please refer to Sales Advisor for further details. All dimensions are approximate and should not be used for carpet sizes, appliance spaces or furniture. We operate a policy of continuous improvement and individual features such as kitchen and bathroom layouts, doors, windows, garages and elevational treatments may vary from time to time. Consequently these particulars should be treated as general guidance only and do not constitute a contract, part of a contract or a warranty.



The Yalding

THREE BEDROOM HOME



Bellway

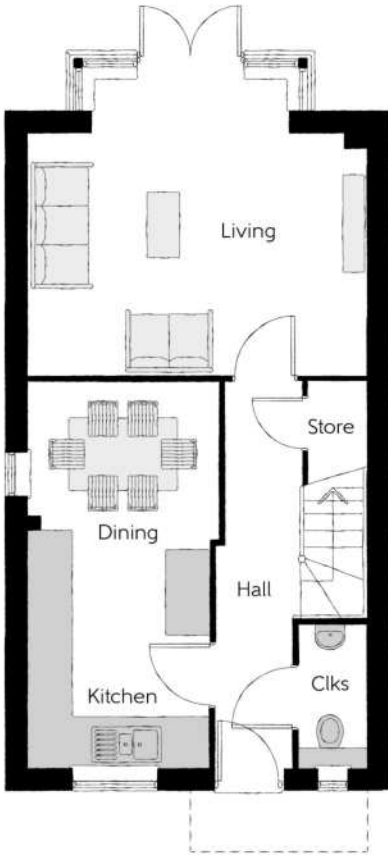
The Yalding

Three bedroom home



First Floor

Bedroom 1	3.08m x 3.60m (max) (max)	10'1" x 11'9" (max) (max)
Bedroom 1 En Suite	1.48m x 1.96m	4'10" x 6'5"
Bedroom 2	2.59m x 3.36m	8'6" x 11'0"
Bedroom 3	1.99m x 3.36m (max) (max)	6'6" x 11'0" (max) (max)
Bathroom	2.18m x 1.91m	7'1" x 6'3"



Ground Floor

Kitchen/Dining	5.41m x 3.40m	17'7" x 11'2"
Living Room	3.36m x 4.52m (max)	11'0" x 14'9" (max)
Cloakroom	0.94m x 1.96m	3'1" x 6'5"

Clks - Cloakroom WS - Wardrobe Space (suggestion only, wardrobe not included)

Furniture arrangements are for illustrative purposes only. Items are not included, nor to scale.

The items shown in this key may be subject to change, and positions could vary from those indicated on this floorplan. Please refer to Sales Advisor for details of your selected plot. Computer generated image shown overleaf. External finishes, landscaping and configuration may vary from plot to plot. Please refer to Sales Advisor for further details. All dimensions are approximate and should not be used for carpet sizes, appliance spaces or furniture. We operate a policy of continuous improvement and individual features such as kitchen and bathroom layouts, doors, windows, garages and elevational treatments may vary from time to time. Consequently these particulars should be treated as general guidance only and do not constitute a contract, part of a contract or a warranty.



The Otham

THREE BEDROOM HOME



Bellway

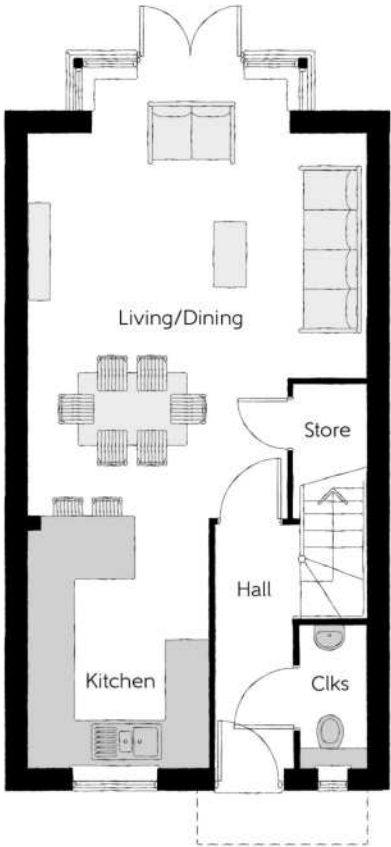
The Otham

Three bedroom home



First Floor

Bedroom 1	3.08m x 3.60m (max) (max)	10'1" x 11'9" (max) (max)
Bedroom 1 En Suite	1.48m x 1.96m	4'10" x 6'5"
Bedroom 2	2.59m x 3.36m	8'6" x 11'0"
Bedroom 3	1.99m x 3.36m (max) (max)	6'6" x 11'0" (max) (max)
Bathroom	2.18m x 1.91m	7'1" x 6'3"



Ground Floor

Kitchen/Living/Dining	8.77m x 7.92m (max)	28'7" x 25'11" (max)
Cloakroom	0.94m x 1.96m	3'1" x 6'5"

Clks - Cloakroom WS - Wardrobe Space (suggestion only, wardrobe not included)

Furniture arrangements are for illustrative purposes only. Items are not included, nor to scale.

The items shown in this key may be subject to change, and positions could vary from those indicated on this floorplan. Please refer to Sales Advisor for details of your selected plot. Computer generated image shown overleaf. External finishes, landscaping and configuration may vary from plot to plot. Please refer to Sales Advisor for further details. All dimensions are approximate and should not be used for carpet sizes, appliance spaces or furniture. We operate a policy of continuous improvement and individual features such as kitchen and bathroom layouts, doors, windows, garages and elevational treatments may vary from time to time. Consequently these particulars should be treated as general guidance only and do not constitute a contract, part of a contract or a warranty.



The Chandler

THREE BEDROOM HOME

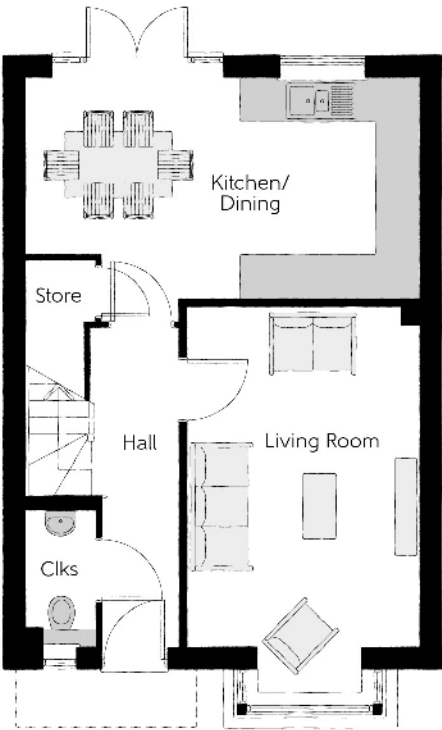


Bellway



First Floor

Bedroom 1	3.40m x 3.02m	11'2" x 9'11"
Bedroom 1 En Suite	2.44m x 1.20m	8'0" x 3'11"
Bedroom 2	3.40m x 3.50m (max)	11'2" x 11'6" (max)
Bedroom 3	3.04m x 2.47m	10'0" x 8'1"
Bathroom	1.97m x 1.96m	6'5" x 6'5"



Ground Floor

Kitchen/Dining	5.46m x 3.39m	17'11" x 11'2"
Living Room	3.22m x 5.36m (inc. bay)	10'7" x 17'7" (inc. bay)
Cloakroom	0.95m x 1.90m	3'1" x 6'3"

Clks - Cloakroom WS - Wardrobe Space (suggestion only, wardrobe not included)

Furniture arrangements are for illustrative purposes only. Items are not included, nor to scale.

The items shown in this key may be subject to change, and positions could vary from those indicated on this floorplan. Please refer to Sales Advisor for details of your selected plot. Computer generated image shown overleaf. External finishes, landscaping and configuration may vary from plot to plot. Please refer to Sales Advisor for further details. All dimensions are approximate and should not be used for carpet sizes, appliance spaces or furniture. We operate a policy of continuous improvement and individual features such as kitchen and bathroom layouts, doors, windows, garages and elevational treatments may vary from time to time. Consequently these particulars should be treated as general guidance only and do not constitute a contract, part of a contract or a warranty.



The Mason

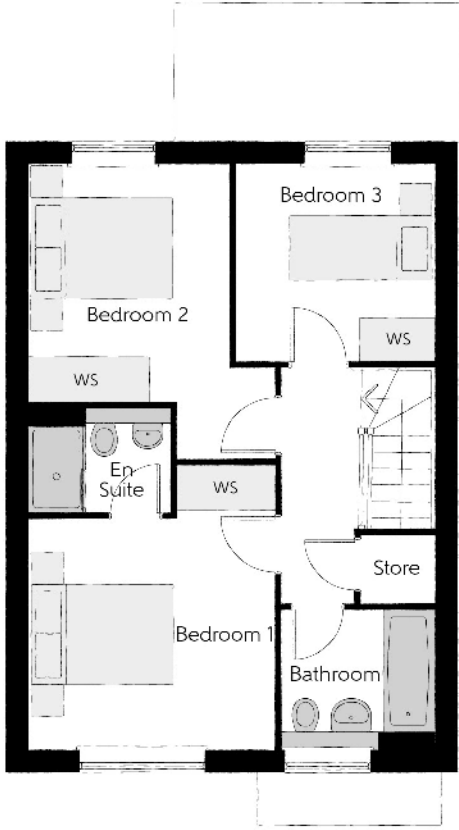
THREE BEDROOM HOME



Bellway

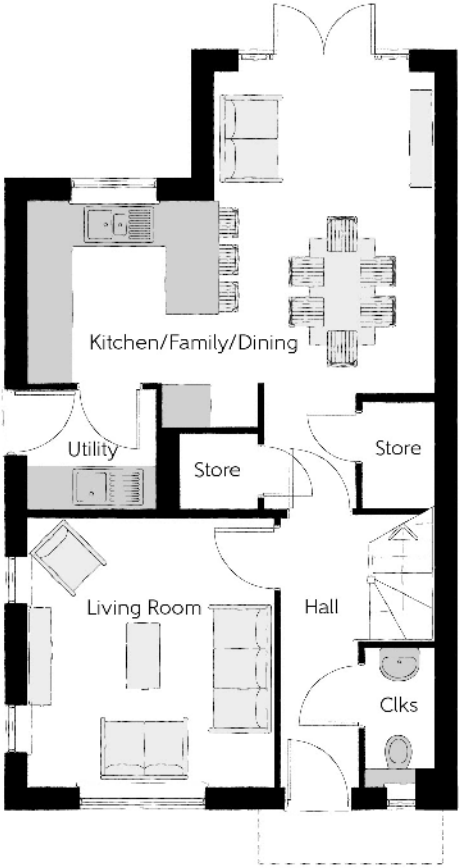
The Mason

Three bedroom home



First Floor

Bedroom 1	3.44m x 3.93m <small>(max)</small>	11'3" x 12'11" <small>(max)</small>
Bedroom 1 En Suite	1.98m x 1.46m	6'6" x 4'9"
Bedroom 2	2.81m x 4.09m <small>(max)</small>	9'3" x 13'5" <small>(max)</small>
Bedroom 3	2.74m x 2.74m	9'0" x 9'0"
Bathroom	2.09m x 1.91m	6'8" x 6'3"



Ground Floor

Kitchen/Family/Dining	5.64m x 6.05m <small>(max)</small> <small>(max)</small>	18'6" x 19'10" <small>(max)</small> <small>(max)</small>
Living Room	3.42m x 3.71m	11'3" x 12'2"
Utility	1.78m x 1.66m	5'10" x 5'5"
Cloakroom	0.96m x 1.91m	3'2" x 6'3"

Clks - Cloakroom WS - Wardrobe Space (suggestion only, wardrobe not included)

Furniture arrangements are for illustrative purposes only. Items are not included, nor to scale.

The items shown in this key may be subject to change, and positions could vary from those indicated on this floorplan. Please refer to Sales Advisor for details of your selected plot. Computer generated image shown overleaf. External finishes, landscaping and configuration may vary from plot to plot. Please refer to Sales Advisor for further details. All dimensions are approximate and should not be used for carpet sizes, appliance spaces or furniture. We operate a policy of continuous improvement and individual features such as kitchen and bathroom layouts, doors, windows, garages and elevational treatments may vary from time to time. Consequently these particulars should be treated as general guidance only and do not constitute a contract, part of a contract or a warranty.

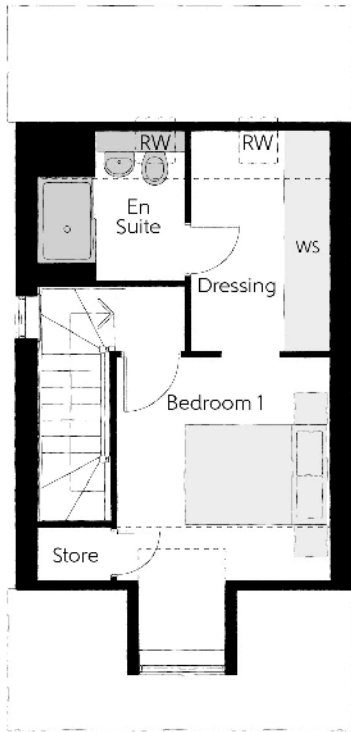


The Fletcher

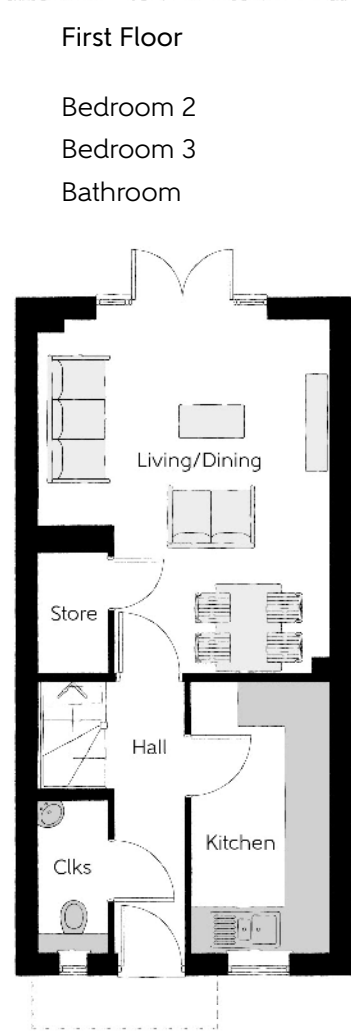
THREE BEDROOM HOME



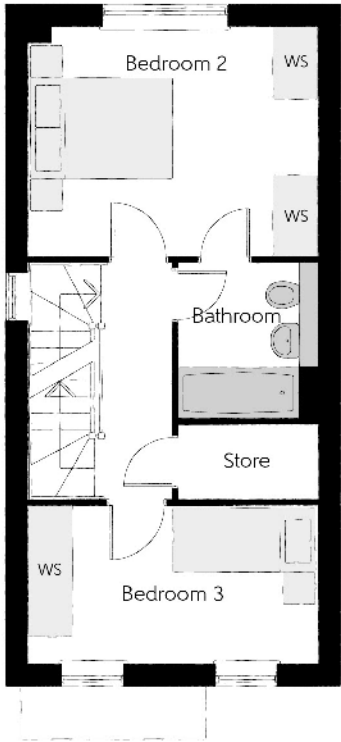
Bellway



Second Floor		
Bedroom 1	3.11m x 2.96m (max) (max)	10'1" x 9'9" (max) (max)
Dressing	1.90m x 3.09m	6'3" x 10'1"
Bedroom 1 En Suite	2.14m x 2.00m	7'0" x 6'5"



Bedroom 2	3.99m x 3.16m	13'1" x 10'4"
Bedroom 3	3.99m x 2.17m	13'1" x 7'1"
Bathroom	1.90m x 2.06m	6'3" x 6'7"



Ground Floor		
Kitchen	1.89m x 3.72m	6'3" x 12'2"
Living/Dining	3.99m x 4.92m (max) (max)	13'1" x 16'2" (max) (max)
Cloakroom	0.95m x 2.11m	3'1" x 6'11"

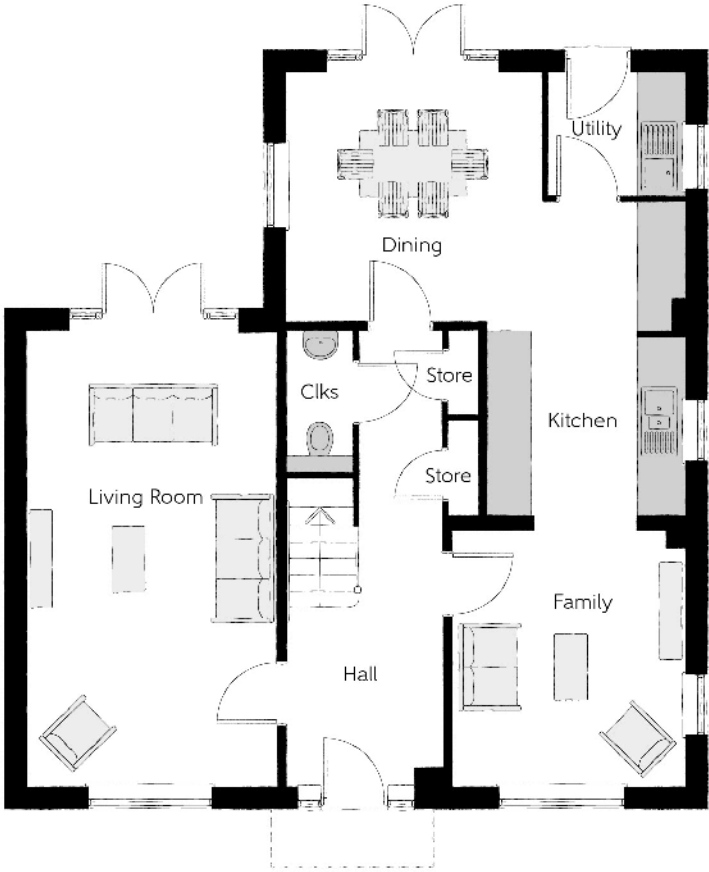
Clks - Cloakroom WS - Wardrobe Space (suggestion only, wardrobe not included) RW - Roof Window ---- - Reduced Head Height

Furniture arrangements are for illustrative purposes only. Items are not included, nor to scale.
The items shown in this key may be subject to change, and positions could vary from those indicated on this floorplan. Please refer to Sales Advisor for details of your selected plot. Computer generated image shown overleaf. External finishes, landscaping and configuration may vary from plot to plot. Please refer to Sales Advisor for further details. All dimensions are approximate and should not be used for carpet sizes, appliance spaces or furniture. We operate a policy of continuous improvement and individual features such as kitchen and bathroom layouts, doors, windows, garages and elevational treatments may vary from time to time. Consequently these particulars should be treated as general guidance only and do not constitute a contract, part of a contract or a warranty.



First Floor

Bedroom 1	3.43m x 3.50m	11'3" x 11'6"
Dressing	2.01m x 2.91m	6'7" x 9'7"
Bedroom 1 En Suite	2.36m x 1.91m	7'9" x 6'3"
Bedroom 2	3.51m x 3.31m	11'6" x 10'10"
Bedroom 2 En Suite	2.24m x 1.40m	7'4" x 4'7"
Bedroom 3	3.51m x 2.91m	11'6" x 9'7"
Bedroom 4	3.19m x 2.73m	10'6" x 8'11"
Bathroom	3.19m x 2.10m	10'6" x 6'11"



Ground Floor

Kitchen/Dining	5.52m x 6.18m (max) (max)	18'1" x 20'3" (max) (max)
Family	3.21m x 3.59m	10'6" x 11'9"
Living Room	3.45m x 6.31m	11'4" x 20'8"
Utility	1.91m x 1.71m	6'3" x 5'7"
Cloakroom	0.90m x 1.94m	3'0" x 6'4"

Clks - Cloakroom WS - Wardrobe Space (suggestion only, wardrobe not included)

Furniture arrangements are for illustrative purposes only. Items are not included, nor to scale.

The items shown in this key may be subject to change, and positions could vary from those indicated on this floorplan. Please refer to Sales Advisor for details of your selected plot. Computer generated image shown overleaf. External finishes, landscaping and configuration may vary from plot to plot. Please refer to Sales Advisor for further details. All dimensions are approximate and should not be used for carpet sizes, appliance spaces or furniture. We operate a policy of continuous improvement and individual features such as kitchen and bathroom layouts, doors, windows, garages and elevational treatments may vary from time to time. Consequently these particulars should be treated as general guidance only and do not constitute a contract, part of a contract or a warranty.

The Weaver

FOUR BEDROOM HOME





The Chartham

FOUR BEDROOM HOME



Bellway

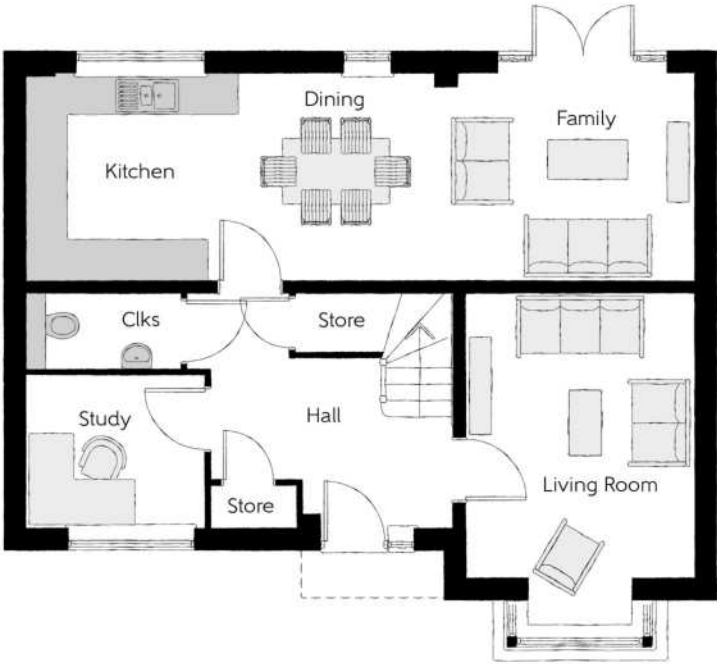
The Chartham

Four bedroom home



First Floor		
Bedroom 1	4.36m x 3.16m (max)	14'3" x 10'4" (max)
Bedroom 1 En Suite	2.32m x 1.43m	7'7" x 4'8"
Bedroom 2	3.59m x 3.29m (max)	11'9" x 10'9" (max)
Bedroom 3	2.56m x 2.94m	8'5" x 9'7"
Bedroom 4	2.55m x 3.29m (max)	8'4" x 10'9" (max)
Bathroom	2.26m x 1.91m	7'4" x 6'3"

Ground Floor		
Kitchen/Dining/ Family	9.24m x 3.08m	30'3" x 10'1"
Living Room	3.17m x 3.97m	10'4" x 13'0"
Study	2.13m x 2.49m	6'11" x 8'1"
Cloakroom	1.07m x 2.15m	3'6" x 7'0"



Clks - Cloakroom WS - Wardrobe Space (suggestion only, wardrobe not included)

Furniture arrangements are for illustrative purposes only. Items are not included, nor to scale.

The items shown in this key may be subject to change, and positions could vary from those indicated on this floorplan. Please refer to Sales Advisor for details of your selected plot. Computer generated image shown overleaf. External finishes, landscaping and configuration may vary from plot to plot. Please refer to Sales Advisor for further details. All dimensions are approximate and should not be used for carpet sizes, appliance spaces or furniture. We operate a policy of continuous improvement and individual features such as kitchen and bathroom layouts, doors, windows, garages and elevational treatments may vary from time to time. Consequently these particulars should be treated as general guidance only and do not constitute a contract, part of a contract or a warranty.



The Scrivener

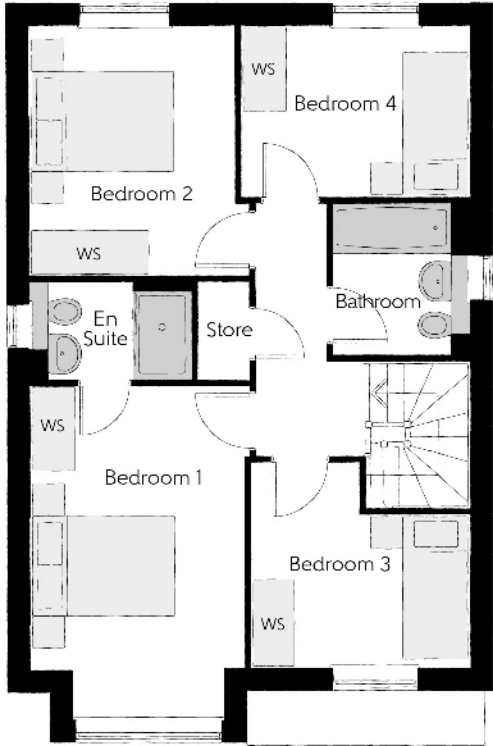
FOUR BEDROOM HOME



Bellway

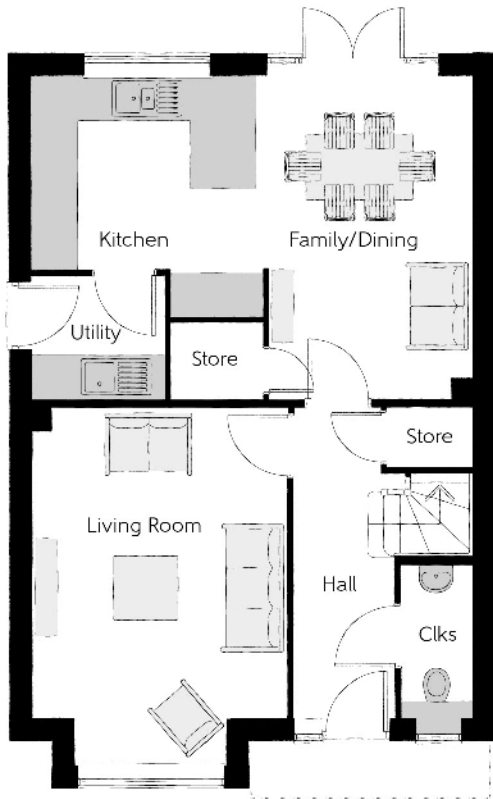
The Scrivener

Four bedroom home



First Floor

Bedroom 1	2.96m x 4.59m <small>(inc. bay)</small>	9'9" x 15'1" <small>(inc. bay)</small>
Bedroom 1 En Suite	2.22m x 1.35m	7'4" x 4'5"
Bedroom 2	2.83m x 3.46m	9'3" x 11'4"
Bedroom 3	3.03m x 2.87m <small>(max)</small>	9'11" x 9'5" <small>(max)</small>
Bedroom 4	3.17m x 2.38m	10'5" x 7'10"
Bathroom	1.91m x 2.08m	6'3" x 6'10"



Ground Floor

Kitchen	2.69m x 3.01m	8'7" x 9'10"
Family/Dining	3.09m x 4.49m	10'1" x 14'7"
Living Room	3.54m x 4.94m <small>(inc. bay)</small>	11'7" x 16'3" <small>(inc. bay)</small>
Utility	1.84m x 1.71m	6'0" x 5'7"
Cloakroom	0.97m x 2.08m	3'2" x 6'10"

Clks - Cloakroom WS - Wardrobe Space (suggestion only, wardrobe not included)

Furniture arrangements are for illustrative purposes only. Items are not included, nor to scale.

The items shown in this key may be subject to change, and positions could vary from those indicated on this floorplan. Please refer to Sales Advisor for details of your selected plot. Computer generated image shown overleaf. External finishes, landscaping and configuration may vary from plot to plot. Please refer to Sales Advisor for further details. All dimensions are approximate and should not be used for carpet sizes, appliance spaces or furniture. We operate a policy of continuous improvement and individual features such as kitchen and bathroom layouts, doors, windows, garages and elevational treatments may vary from time to time. Consequently these particulars should be treated as general guidance only and do not constitute a contract, part of a contract or a warranty.



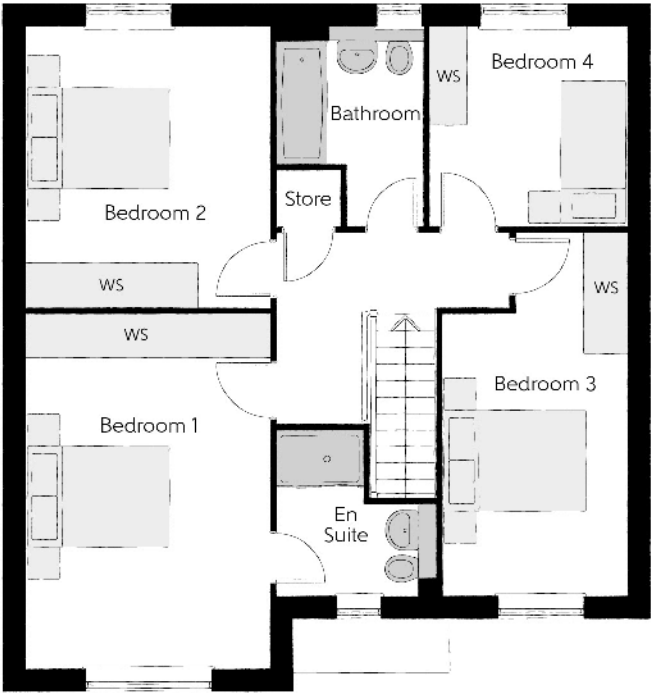
The Philosopher

FOUR BEDROOM HOME

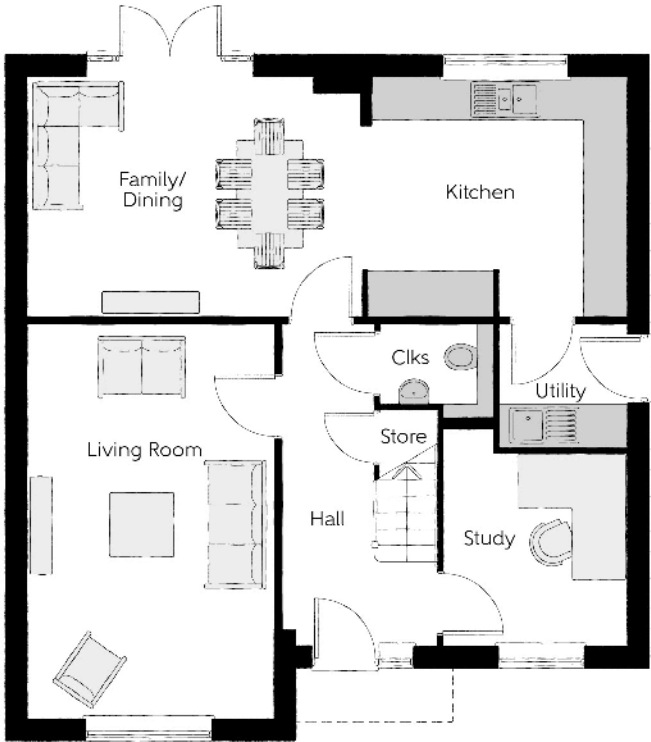


The Philosopher

Four bedroom home



First Floor		
Bedroom 1	3.39m x 4.92m	11'1" x 16'2"
Bedroom 1 En Suite	2.23m x 2.27m (max) (max)	7'4" x 7'5" (max) (max)
Bedroom 2	3.39m x 4.82m	11'1" x 15'7"
Bedroom 3	2.55m x 5.03m (max)	8'4" x 16'6" (max)
Bedroom 4	2.75m x 2.76m	9'0" x 9'1"
Bathroom	2.02m x 2.76m (max) (max)	6'8" x 9'1" (max) (max)



Ground Floor		
Kitchen	3.71m x 3.30m	12'2" x 10'10"
Family/Dining	4.63m x 3.30m	15'2" x 10'10"
Living Room	3.39m x 5.45m	11'1" x 17'11"
Study	2.55m x 3.03m (max)	8'4" x 9'11" (max)
Utility	1.78m x 1.71m	5'10" x 5'7"
Cloakroom	1.57m x 1.32m (max)	5'2" x 4'4" (max)

Clks - Cloakroom WS - Wardrobe Space (suggestion only, wardrobe not included)

Furniture arrangements are for illustrative purposes only. Items are not included, nor to scale.

The items shown in this key may be subject to change, and positions could vary from those indicated on this floorplan. Please refer to Sales Advisor for details of your selected plot. Computer generated image shown overleaf. External finishes, landscaping and configuration may vary from plot to plot. Please refer to Sales Advisor for further details. All dimensions are approximate and should not be used for carpet sizes, appliance spaces or furniture. We operate a policy of continuous improvement and individual features such as kitchen and bathroom layouts, doors, windows, garages and elevational treatments may vary from time to time. Consequently these particulars should be treated as general guidance only and do not constitute a contract, part of a contract or a warranty.

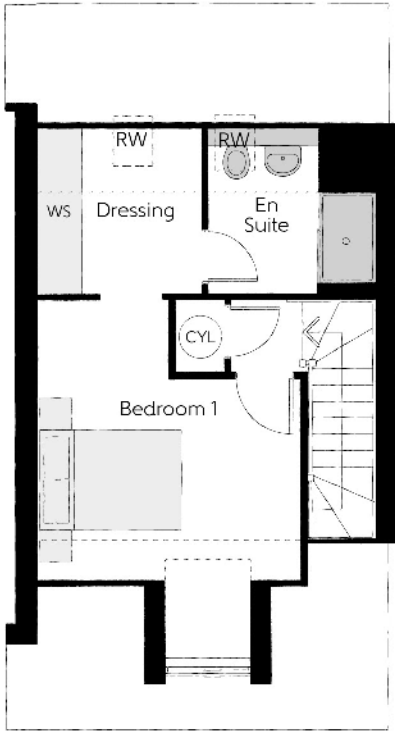


The Chilham

FOUR BEDROOM HOME

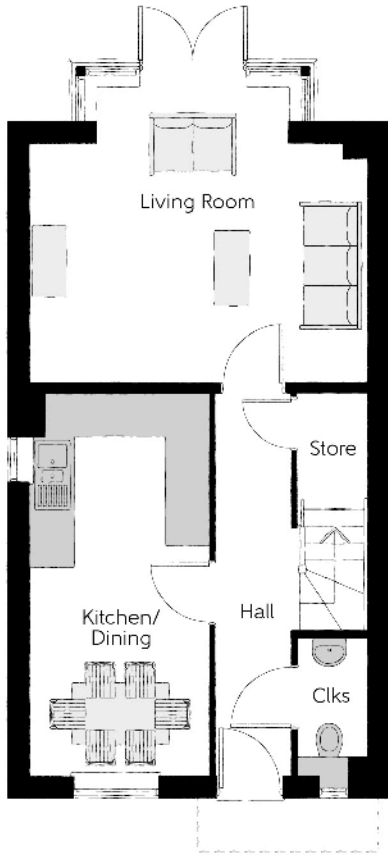


Bellway



Second Floor

Bedroom 1	3.63m x 3.90m (max)	11'11" x 12'7" (max)
Dressing	2.25m x 2.29m	7'5" x 7'6"
Bedroom 1 En Suite	2.29m x 2.33m	7'6" x 7'7"



Ground Floor

Kitchen/Dining	5.33m x 2.49m (max)	17'5" x 8'2" (max)
Living Room	4.67m x 3.31m (max)	15'3" x 10'10" (max)
Cloakroom	0.95m x 1.90m	3'1" x 6'3"



First Floor

Bedroom 2	3.11m x 3.07m (max)	10'2" x 10'1" (max)
Bedroom 2 En Suite	1.48m x 1.91m	4'10" x 6'3"
Bedroom 3	2.59m x 3.37m	8'6" x 11'1"
Bedroom 4	1.99m x 3.37m	6'6" x 11'1"
Bathroom	2.16m x 1.90m	7'1" x 6'2"

(CYL) - Hot Water Cylinder **Clks** - Cloakroom **WS** - Wardrobe Space (suggestion only, wardrobe not included) **(RW)** - Roof Window **----** - Reduced Head Height

Furniture arrangements are for illustrative purposes only. Items are not included, nor to scale.
The items shown in this key may be subject to change, and positions could vary from those indicated on this floorplan. Please refer to Sales Advisor for details of your selected plot. Computer generated image shown overleaf. External finishes, landscaping and configuration may vary from plot to plot. Please refer to Sales Advisor for further details. All dimensions are approximate and should not be used for carpet sizes, appliance spaces or furniture. We operate a policy of continuous improvement and individual features such as kitchen and bathroom layouts, doors, windows, garages and elevational treatments may vary from time to time. Consequently these particulars should be treated as general guidance only and do not constitute a contract, part of a contract or a warranty.



The Baker

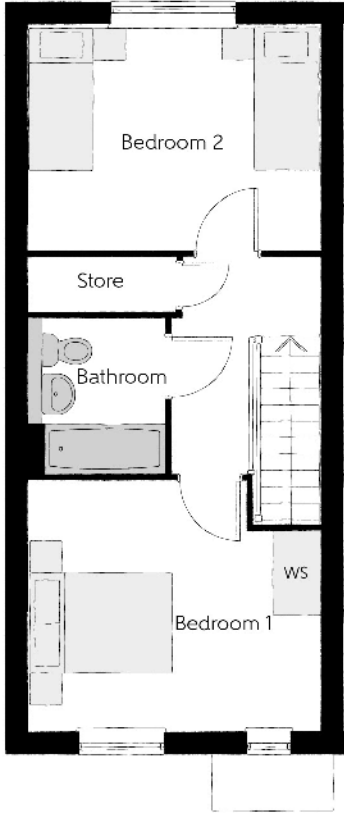
TWO BEDROOM HOME



Bellway

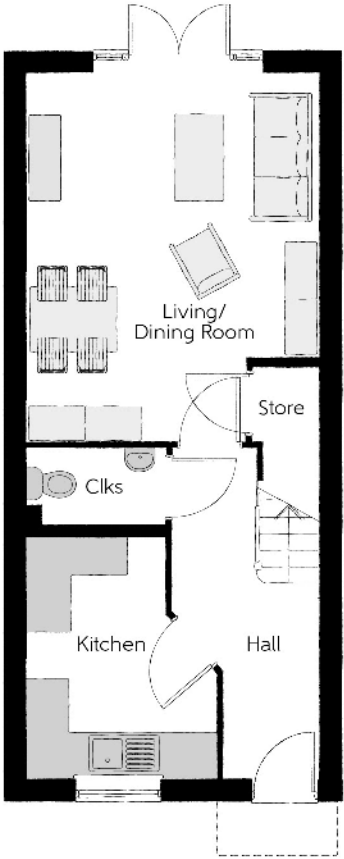
The Baker

Two bedroom home



First Floor

Bedroom 1	4.08m x 3.46m <small>(max) (max)</small>	13'5" x 11'4" <small>(max) (max)</small>
Bedroom 2	4.08m x 3.11m <small>(max) (max)</small>	13'5" x 13'1" <small>(max) (max)</small>
Bathroom	1.93m x 2.18m	6'4" x 7'2"



Ground Floor

Kitchen	2.65m x 3.35m <small>(max) (max)</small>	8'8" x 11'0" <small>(max) (max)</small>
Living/Dining Room	4.08m x 5.05m <small>(max) (max)</small>	13'5" x 16'10" <small>(max) (max)</small>
Cloakroom	1.93m x 1.09m	6'4" x 3'7"

Ⓢ - Cloakroom WS - Wardrobe Space (suggestion only, wardrobe not included)

Furniture arrangements are for illustrative purposes only. Items are not included, nor to scale.
The items shown in this key may be subject to change, and positions could vary from those indicated on this floorplan. Please refer to Sales Advisor for details of your selected plot. Computer generated image shown overleaf. External finishes, landscaping and configuration may vary from plot to plot. Please refer to Sales Advisor for further details. All dimensions are approximate and should not be used for carpet sizes, appliance spaces or furniture. We operate a policy of continuous improvement and individual features such as kitchen and bathroom layouts, doors, windows, garages and elevational treatments may vary from time to time. Consequently these particulars should be treated as general guidance only and do not constitute a contract, part of a contract or a warranty.



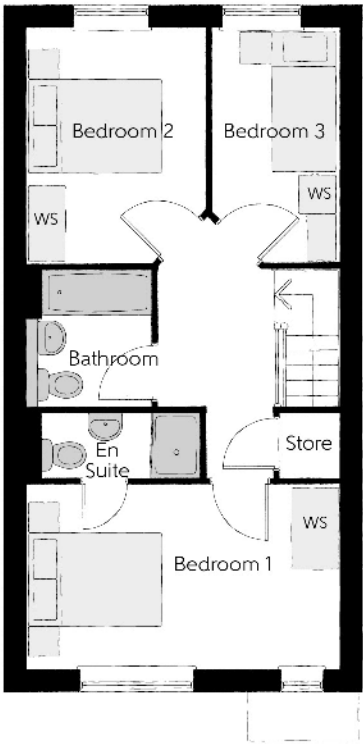
The Tillman

THREE BEDROOM HOME



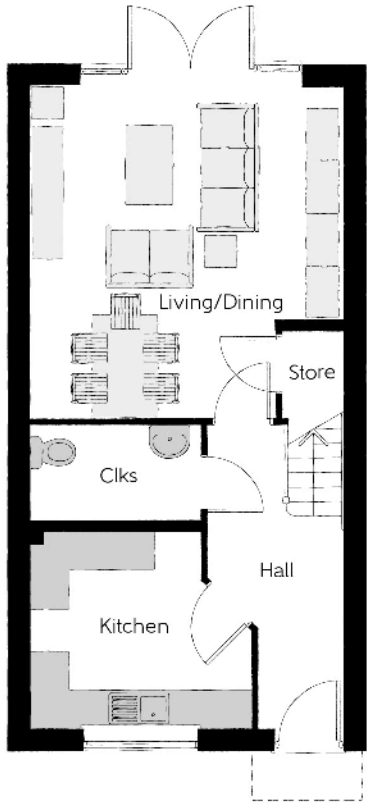
The Tillman

Three bedroom home



First Floor

Bedroom 1	4.79m x 2.82m	15'9" x 9'3"
Bedroom 2	2.74m x 3.61m	8'4" x 15'5"
Bedroom 3	1.96m x 3.61m	7'1" x 11'10"
Bathroom	2.09m x 1.93m	6'4" x 6'11"



Ground Floor

Kitchen	3.36m x 3.05m (max) (max)	11'0" x 10'0" (max) (max)
Living/Dining	4.79m x 5.05m (max) (max)	15'9" x 16'7" (max) (max)
Cloakroom	2.61m x 1.46m	8'7" x 4'10"

Clks - Cloakroom WS - Wardrobe Space (suggestion only, wardrobe not included)

Furniture arrangements are for illustrative purposes only. Items are not included, nor to scale.
The items shown in this key may be subject to change, and positions could vary from those indicated on this floorplan. Please refer to Sales Advisor for details of your selected plot. Computer generated image shown overleaf. External finishes, landscaping and configuration may vary from plot to plot. Please refer to Sales Advisor for further details. All dimensions are approximate and should not be used for carpet sizes, appliance spaces or furniture. We operate a policy of continuous improvement and individual features such as kitchen and bathroom layouts, doors, windows, garages and elevational treatments may vary from time to time. Consequently these particulars should be treated as general guidance only and do not constitute a contract, part of a contract or a warranty.



The Cartographer

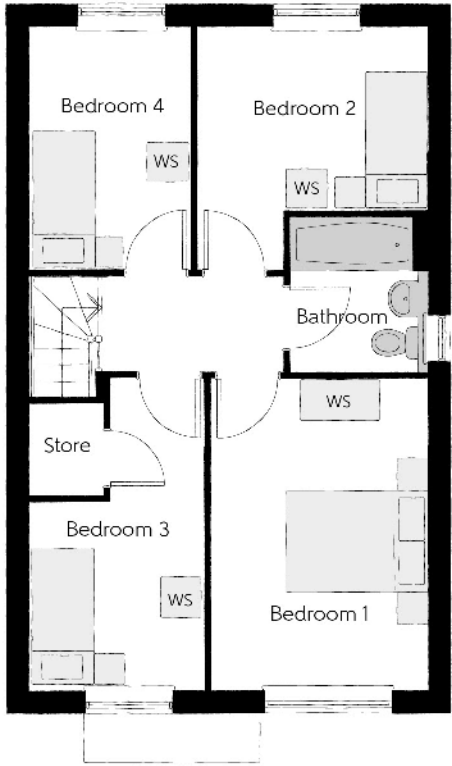
FOUR BEDROOM HOME



Bellway

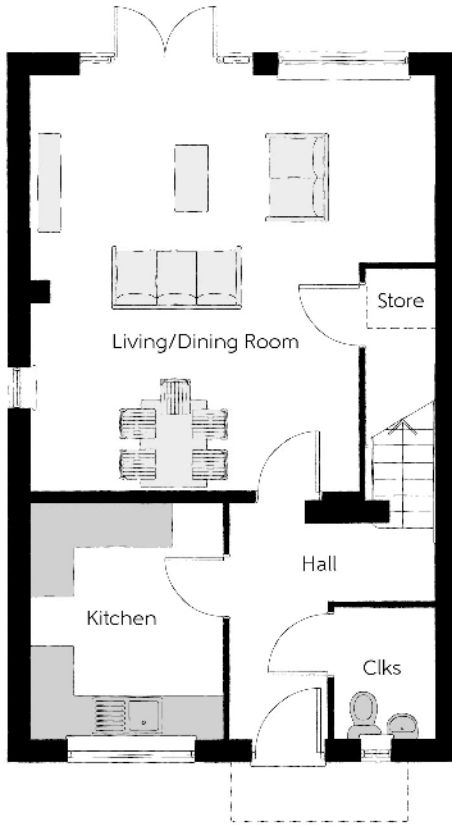
The Cartographer

Four bedroom home



First Floor

Bedroom 1	3.03m x 4.31m	9'11" x 14'2"
Bedroom 2	3.21m x 3.31m (max) (max)	10'6" x 10'10" (max) (max)
Bedroom 3	2.45m x 4.31m	8'1" x 14'2"
Bedroom 4	2.27m x 3.31m (max) (max)	7'5" x 10'10" (max) (max)
Bathroom	1.94m x 2.13m	6'4" x 7'0"



Ground Floor

Kitchen	2.64m x 3.25m	8'8" x 10'8"
Living/Dining Room	5.57m x 5.72m (max) (max)	18'3" x 18'9" (max) (max)
Cloakroom	1.41m x 1.81m	4'8" x 5'11"

Cls - Cloakroom WS - Wardrobe Space (suggestion only, wardrobe not included)

Furniture arrangements are for illustrative purposes only. Items are not included, nor to scale.

The items shown in this key may be subject to change, and positions could vary from those indicated on this floorplan. Please refer to Sales Advisor for details of your selected plot. Computer generated image shown overleaf. External finishes, landscaping and configuration may vary from plot to plot. Please refer to Sales Advisor for further details. All dimensions are approximate and should not be used for carpet sizes, appliance spaces or furniture. We operate a policy of continuous improvement and individual features such as kitchen and bathroom layouts, doors, windows, garages and elevational treatments may vary from time to time. Consequently these particulars should be treated as general guidance only and do not constitute a contract, part of a contract or a warranty.

Specification

			2 Bedroom Homes	3 Bedroom Homes	4 Bedroom Homes
FINISHES	Loft Hatch	Loft Hatch - Hinged Drop Down ** ††	●	●	●
	Entrance Doors	GRP Insulated Door	●	●	●
	Ceilings	Crown White Matt Emulsion	●	●	●
	Walls	Crown White Matt Emulsion	●	●	●
	Floors	Concrete Ground Floor / Chipboard First Floor	●	●	●
	Window Cills	White Satin MDF	●	●	●
	Stairs	Timber Stair - White Satin MDF Strings	●	●	●
	Balusters	White Satin Stop Chamfered Balusters	●	●	●
	Newel Posts	White Satin Stop Chamfered Newels	●	●	●
	Newel Caps	White Satin Flat Top Newel Caps	●	●	●
	Handrail	White Satin Heavy Duty Handrail	●	●	●
	Skirting	White Satin 94x14 MDF Grooved & Chamfered	●	●	
		White Satin 120x14 MDF Grooved & Chamfered			●
	Architrave	White Satin 69x18 MDF Grooved & Chamfered	●	●	●
	Internal Doors	White Pre Finished Vertical Panel Internal Doors	●	●	●
	Ironmongery	Chrome SR100 Door Furniture	●	●	●
KITCHEN	Frontals	Bellway Band B options ~	●	●	
		Bellway Band C options ~			●
	Carcass	Premium Grade 18mm thk Colour Matched Carcass	●	●	●
	Units	Frontal Matching Table Ends	●	●	
		Unit Framing			●
	Worktops	40mm Square Edge Worktops with upstand	●	●	●
	Kitchen Sink	Leisure Eaton Single Bowl SS Sink & Aquapace Tap (inc Sink Liner)	●		
		Leisure Eaton Bowl & Half SS Sink & Aquapace Tap (inc Sink Liner)		●	
		Leisure Atlanta Bowl & Half SS Sink & Aquapace Tap (inc Sink Liner)			●
	Utility Sink	Leisure Eaton Single Bowl SS Sink & Aquapace Tap (inc Sink Liner)		●	
		Leisure Atlanta Single Bowl SS Sink & Aquapace Tap (inc Sink Liner)			●
	Appliances Oven	Electrolux Single Oven KOFGH00BX	●	●	
		Electrolux Single Oven KOFGH40TX			●
	Appliances Hob	Electrolux 4 Burner Gas Hob KGS6404SX & Glass Splashback	●	●	
		Electrolux 4 Burner Gas Hob KGS6436X & Glass Splashback			●
	Appliances Extractor	Cooker Hood Extractor LFC316X (recirculating)	●	●	●
WET ROOMS	Appliances Fridge Freezer	Electrolux 70/30 Fridge Freezer LN55LE18S	●	●	●
	Appliance Dishwasher	Electrolux Dishwasher KEAF7200L	●	●	●
	Appliance Washing Machine	Electrolux Washing Machine E772F402BI	●	●	●
	Cloaks - WC	Roca DEBBA WC with Concealed Cistern & PL2 Flush Plate ^	●	●	●
	Cloaks - Basin	Roca Wash Hand Basin †††	●	●	●
	Cloaks - Brassware	Bristan PISA Small Basin Chrome Mixer Tap	●	●	●
	Cloaks - Tiling	Band 3 Tiling to WC Boxing, Splashback Tiling to WHB, Flat Edge Brushed Trim	●	●	●
	Bathroom - WC	Roca DEBBA WC with Concealed Cistern & PL2 Flush Plate ^	●	●	●
	Bathroom - Basin	Roca DEBBA 500WHB with Semi Pedestal	●	●	
		Roca Debba 520 Semi Recessed WHB no Pedestal M4(2)			●
	Bathroom - Bath	Roca OSLO Acrylic Bath & Rigid Bath Panel	●	●	●
	Bathroom - Brassware	Bristan PISA Chrome Bath & Basin Mixer Taps	●	●	
		Bristan SAIL Chrome Bath & Basin Mixer Taps			●
	Bathroom - Shower Tray	Mira FLIGHT Low Shower Tray with Mira ELEVATE Enclosure †††	●	●	●
	Bathroom - Shower	Mira MINIMAL Single Thermostatic Shower ^^^	●	●	
		Mira MINIMAL Single Thermostatic Shower ~~~			●
	Bathroom - Tiling	1/2 Height Tiling (Band 3) to Wet Walls with Box Edged Brushed Trim *** †††	●	●	●
	En-Suite - WC	Roca DEBBA WC with Concealed Cistern & PL2 Flush Plate ^	●	●	●

			2 Bedroom Homes	3 Bedroom Homes	4 Bedroom Homes
WET ROOMS	En-Suite - Basin	Roca DEBBA 450 WHB with Full Pedestal	●	●	
		Roca DEBBA 550 WHB with Semi Pedestal			●
	En-Suite - Brassware	Bristan PISA Chrome Bath & Basin Mixer Taps	●	●	
		Bristan SAIL Chrome Bath & Basin Mixer Taps			●
	En-Suite - Shower Tray	Mira FLIGHT Low Shower Tray with Mira ELEVATE Enclosure †††	●	●	●
	En-Suite - Shower	Mira MINIMAL Single Thermostatic Shower ††	●	●	●
	En-Suite - Tiling	1/2 Height Tiling (Band 3) to Wet Walls with Box Edged Brushed Trim †††	●	●	●
MECHANICAL	Boiler	Ideal LOGIC Combination Boiler (Cb) †††	●	●	●
	Controls	Honeywell T6R Dual Zone Smart Thermostat	●	●	●
	Radiators	Stelrad Compact Steel Panel Radiators with Grilles	●	●	●
	Towel Warmers	Flat Chrome to Bathroom			●
	Ventilation	Window Trickle Ventilators with Mechanical Extract Fans (system 3) dMEV	●	●	●
ELECTRICS	Safety - Heat	Heat Detector DET ^^	●	●	●
	Safety - Fire	Optical Smoke Detectors LD2 D2 DET	●	●	●
	Safety - Carbon	Carbon Monoxide Alarm (Battery Powered) - Deta	●	●	●
	Consumer Unit	Wylex Consumer Unit	●	●	●
	Sockets & Switches	Electrium CASA White Fittings	●	●	●
	Lighting	Pendant Fitting to Habitable Rooms	●	●	●
	Lighting - Kitchen	White Recessed Spot Lights	●	●	●
	Lighting - Bathroom & En-Suites	White Recessed Spot Lights	●	●	●
	Lighting - External	External Light Clifton Brushed Steel Up/Down (Front & Rear)	●	●	●
	Communications - Data	Cat 6 Network Point to Living Room & Study	●	●	●
EXTERNALS & MISC	Broadband	Ultrafast Fibre Connectivity (Tri Party install) ‡	●	●	●
	Ecological	Hedgehog Highway fencing adaption	●	●	●
	Garages Electrics	Light & Power Point to incurtilage Garages ##	●	●	●
	Build Method	Masonry ##	●	●	●
	Maintenance	External Tap	●	●	●
	Number Plaque	Artisan Number Plaque	●	●	●
	Footpath & Patio	Grey Riven PCC Flags 450x450x32's	●		
		Buff Riven PCC Flags 450x450x32's		●	●
	Garages	Steel Panel Up & Over Canopy Garage Door ##	●	●	●
	Drives	Bitmac Black #	●	●	●
	Landscaping - Front	Medallion Turf & Landscape Planting ###	●	●	●
	Landscaping - Rear	Rotovated Topsoil ###	●	●	●
	Renewables	Photovoltaic Array ##	●	●	●
	EV Charging Terminal	Pod Point 7kw Solo Universal * †	●	●	●

* electrical infrastructure upgrade maybe required

** fire rated as necessary

*** full height around bath where shower provided as standard

‡ mounting position is plot specific, refer to site layout

†† where layout allows

††† full height to shower enclosure

‡ consult with sales executive for specific development details

†† flow regulator fitted to bath mixer if serving single thermostatic shower & fed via combination boiler

††† housetype dependent - liaise with sales executive

^ inc soft close mechanism seat on 4 & 5 Bedroom Homes ONLY

^^ kitchen only

^^^ over bath ONLY incorporating MIRA bath screen 11863.004 where no shower elsewhere in dwelling

plot dependent

plot specific, refer site layout

refer site landscape layout

~ soft close mechanism to doors & drawers

~~ where provision of shower tray allows



Dedicated to delivering quality

An enhanced specification is the hallmark of The Artisan Collection.

All of our homes are equipped with superior fixtures and fittings, which dovetails perfectly with our focus on design and attention to detail.

Expertly crafted using state-of-the-art materials, your brand new home is finished to a high standard so you can start enjoying it the moment you get your keys.

"The overall finish of the home is perfect – Bellway really pay attention to every detail. The team were amazing and supported us throughout the process."

SAMI AND SARA,
HANWOOD PARK

Homes to love, built with care

From the first day you visit our sales centre, to the day you move in and beyond, we aim to provide a level of service and after-sales care that is second to none.

A number of quality checks are carried out on each of our new homes through the construction process and on completion. Once your home has passed all of our quality checks, you will be invited to attend your Home Demonstration which will provide an opportunity for you to understand the various elements of your new home. On move in day, our site and sales teams will be there to ensure that everything goes as smoothly as possible.

Once you've settled into your new home, Bellway has experienced after-sales teams to provide support and assistance whenever you need it. Our homes come with a 10-year NHBC Buildmark policy, or an equivalent warranty from another provider. This includes deposit protection from exchange of contracts, a two-year builder warranty from legal completion, and then eight years of structural defects insurance cover.*

We are confident that our approach to building and selling quality homes, coupled with our customer care processes, will provide you with many years of enjoyment in your new home.



*For more details, visit the NHBC website at www.nhbc.co.uk/homeowners and view the 'Welcome to NHBC warranty and insurance' brochure, or refer to the brochure of your alternative warranty provider.



How to find us



Bellway



Bellway abides by the New Homes Quality Code (NHQC), an independent industry code established to champion quality new homes and deliver better outcomes for customers.

