



# Montem Square

Montem Square is a development of 1 and 2 bedroom apartments and 3 bedroom homes, located in Slough, Berkshire.



THE  
ARTISAN  
COLLECTION

**Bellway**





# Created for you

with community at its heart

Montem Square is a desirable collection of 1 and 2 bedroom apartments and 2 and 3 bedroom homes occupying an excellent location on the outskirts of Slough in Berkshire. The development is just a stone's throw from the bustling town centre, a variety of leisure facilities and outstanding transport links to London via the M4, Elizabeth Line and National Rail services. Set around open space and built to

high levels of quality and energy efficiency, Montem Square has been designed to create a welcoming community with quality of life at its heart. Each property provides space, comfort and practicality in equal measure while maximising convenience. Whether you're a first-time buyer, city commuter, family or downsizer, there is a home for you here.

# Berkshire life

Enjoy complete convenience on your doorstep

Montem Square enjoys an excellent Berkshire location, close to the centre of Slough and everything this popular town has to offer. Essentials such as the supermarket, pharmacy, dentist and GP surgery are all less than five minutes away by car.

There is also an exceptional range of education within reach, ranging from local primary schools right through to world-leading universities, including the University of Oxford and Kings College London.

The town centre itself can be reached in just four minutes by bike. Here you can find a range of shops and services. Queensmere Observatory Shopping Centre sits at the heart of the town and offers a great balance of high-street names and independent retailers. There is also a diverse selection of eateries that can cater for even most exotic palate.

Leisure amenities in the immediate surrounding area are abundant. A great example is Salt Hill Park and Activity Centre which is within walking distance. With the park providing sports courts, play areas, walks and open space and the activity centre housing bowling,

trampolining and soft play, there is plenty to keep the whole family entertained – whatever the weather.

Another option is the adjacent Slough Ice Arena, with its ice-skating rink, climbing wall and fully-equipped gym. Alternatively, Dorney Lake is located within 15 minutes by car. This purpose-built rowing course offers a boat club for beginners and general rowing sessions throughout the year. Alternatively, explore the surrounding 400 acres of picturesque grounds or run the tarmacked three-mile loop that follows the lake's circumference.

For more choice, neighbouring Windsor can be reached in seven minutes by car and, aside from great shopping, plays home to Royal Windsor Racecourse, Legoland and the famous Windsor Castle.

In addition to all this, Slough Station operates direct rail services into London in as little as 18 minutes. It is also possible to join the Elizabeth Line, which carves a direct route across the entire city. When combined with Heathrow Airport and the M25, located just 15 minutes away via the M4, it is clear just how connected you could be with a home at Montem Square.

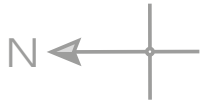













# Development plan



## Apartments

-  Axwell Place (Block A1/A2)  
Plots 1-53
-  Meridian Heights (Block F1)  
Plots 123-145
-  Haverford Tower (Block G1)  
Plots 146-168
-  Mander Court (Block H1)  
Plots 169-179
-  Drayton Court (Block J1)  
Plots 180-187

## 3 Bedroom Homes

-  The Tyne  
Plots 188, 189, 190, 191, 193, 194, 195, 196, 197, 203, 204, 205, 206, 207, 208, 209, 210, 211 & 212
-  The Suffolk  
Plot 192

## 1-2 Bedroom Homes

-  Affordable Homes

### Key to plan

- s/s Sub station
- c/s Cycle store
- c/c Car Club spaces

The site plan is drawn to show the relative position of individual properties. NOT TO SCALE. This is a two dimensional drawing and will not show land contours and gradients, boundary treatments, landscaping or local authority street lighting. Footpaths subject to change. For details of individual properties and availability please refer to our Sales Advisor.





# The Tyne

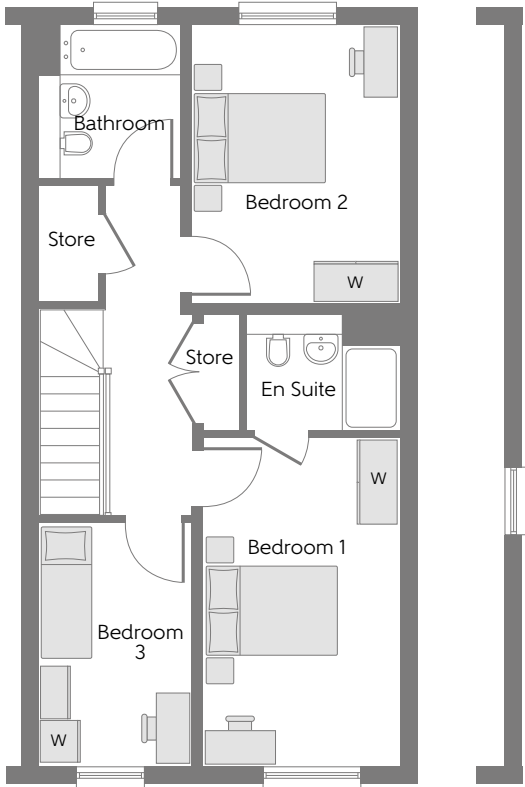
THREE BEDROOM HOME



Bellway

## The Tyne

Three bedroom home



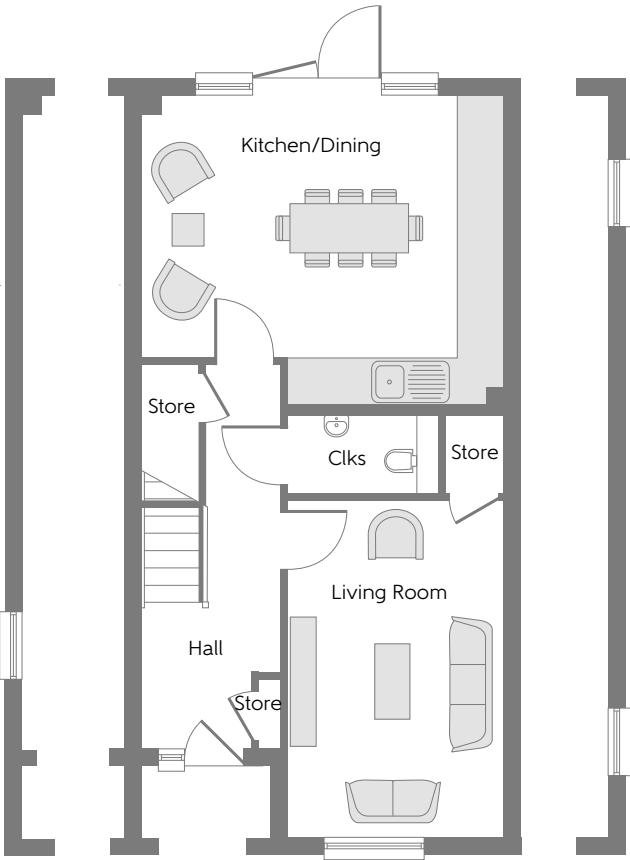
### First Floor

Bedroom 1	4.58m x 2.75m	15'0" x 9'0"
Bedroom 1 En Suite	2.15m x 1.65m	7'1" x 5'4"
Bedroom 2	3.87m x 2.90m	12'7" x 9'5"
Bedroom 3	3.41m x 2.15m	11'2" x 7'1"
Bathroom	2.15m x 2.00m	7'1" x 6'6"

Variation to plots  
203, 207 & 212

### Ground Floor

Kitchen/Dining	5.04m x 3.66m	16'5" x 12'0"
Living Room	4.69m x 3.01m	15'4" x 9'9"
Cloakroom	2.10m x 1.10m	6'9" x 3'6"



Variation to plots  
188, 191, 197, 203,  
206, 207 & 212

Variation to plots  
203, 207 & 212

Clks - Cloakroom    WS - Wardrobe Space (suggestion only, wardrobe not included)

**Furniture arrangements are for illustrative purposes only. Items are not included, nor to scale.**

The items shown in this key may be subject to change, and positions could vary from those indicated on this floorplan. Please refer to Sales Advisor for details of your selected plot. Computer generated image shown overleaf. External finishes, landscaping and configuration may vary from plot to plot. Please refer to Sales Advisor for further details. All dimensions are approximate and should not be used for carpet sizes, appliance spaces or furniture. We operate a policy of continuous improvement and individual features such as kitchen and bathroom layouts, doors, windows, garages and elevational treatments may vary from time to time. Consequently these particulars should be treated as general guidance only and do not constitute a contract, part of a contract or a warranty.





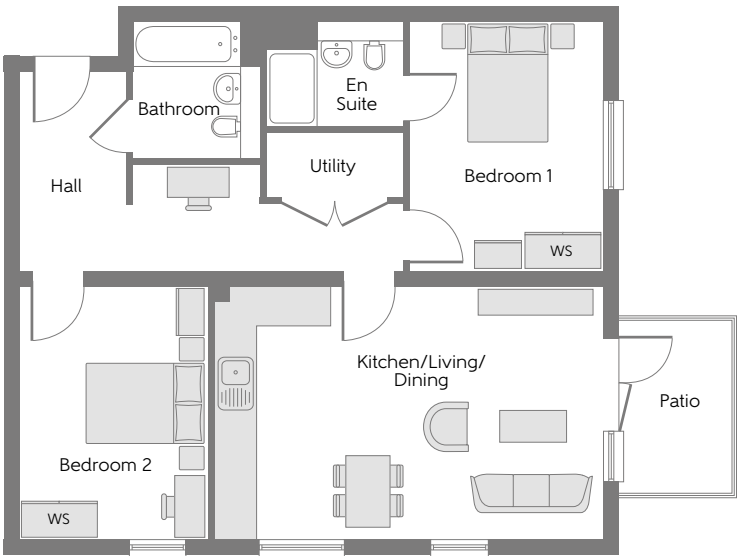
# Axwell Place

ONE AND TWO BEDROOM APARTMENTS



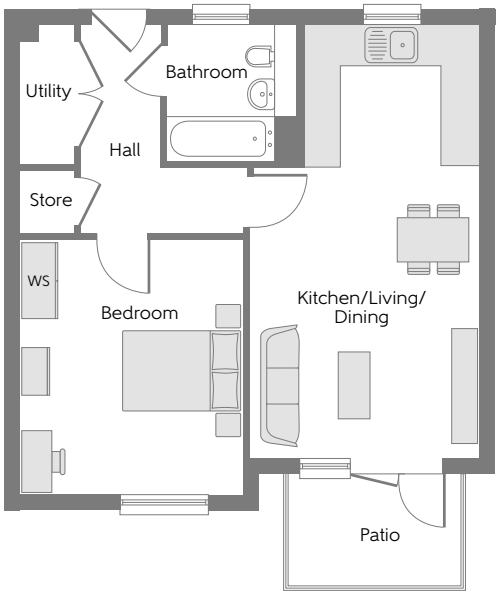
## Axwell Place

One & two bedroom homes



### The Keswick – Plots 1 & 28

Kitchen/Living/Dining	6.11m x 3.98m	20'0" x 13'1"
Bedroom 1	3.88m x 3.10m	12'7" x 10'2"
Bedroom 1 En Suite	2.15m x 1.65m	7'0" x 5'4"
Bedroom 2	3.98m x 2.99m	13'1" x 9'8"
Bathroom	2.15m x 2.00m	7'0" x 6'6"
Utility	2.15m x 0.98m	7'1" x 3'2"
<b>Total area</b>	<b>72.56 sq. m.</b>	<b>781 sq. ft.</b>



### The Arundel – Plots 2, 4 & 29

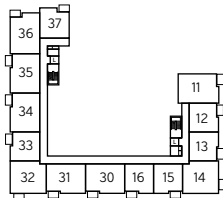
Kitchen/Living/Dining	6.85m x 3.62m	22'5" x 11'9"
Bedroom	4.01m x 3.51m	13'2" x 11'5"
Bathroom	2.15m x 2.00m	7'1" x 6'6"
Utility	2.20m x 0.85m	7'2" x 2'8"
<b>Total area</b>	<b>50.75 sq. m.</b>	<b>546 sq. ft.</b>



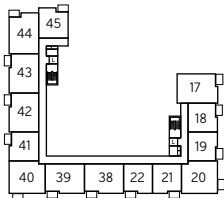
Lower Ground Floor



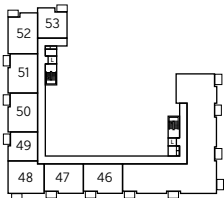
Upper Ground Floor



First Floor



Second Floor



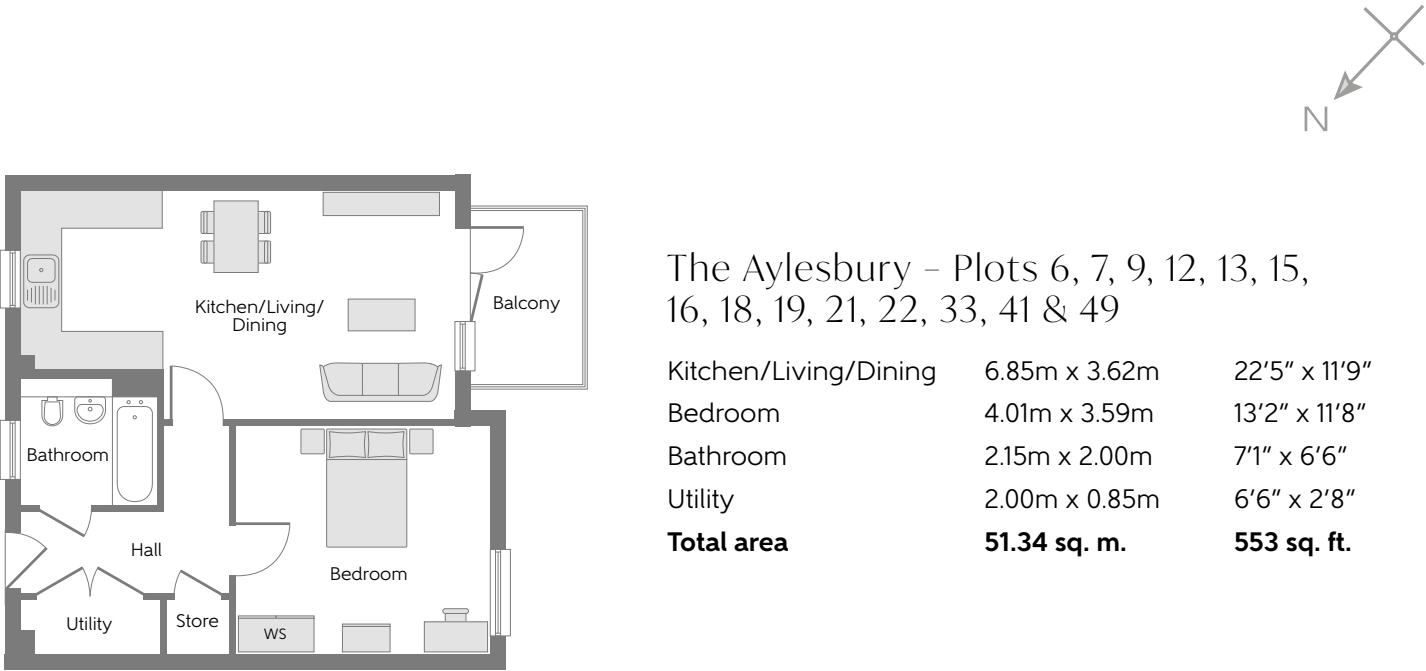
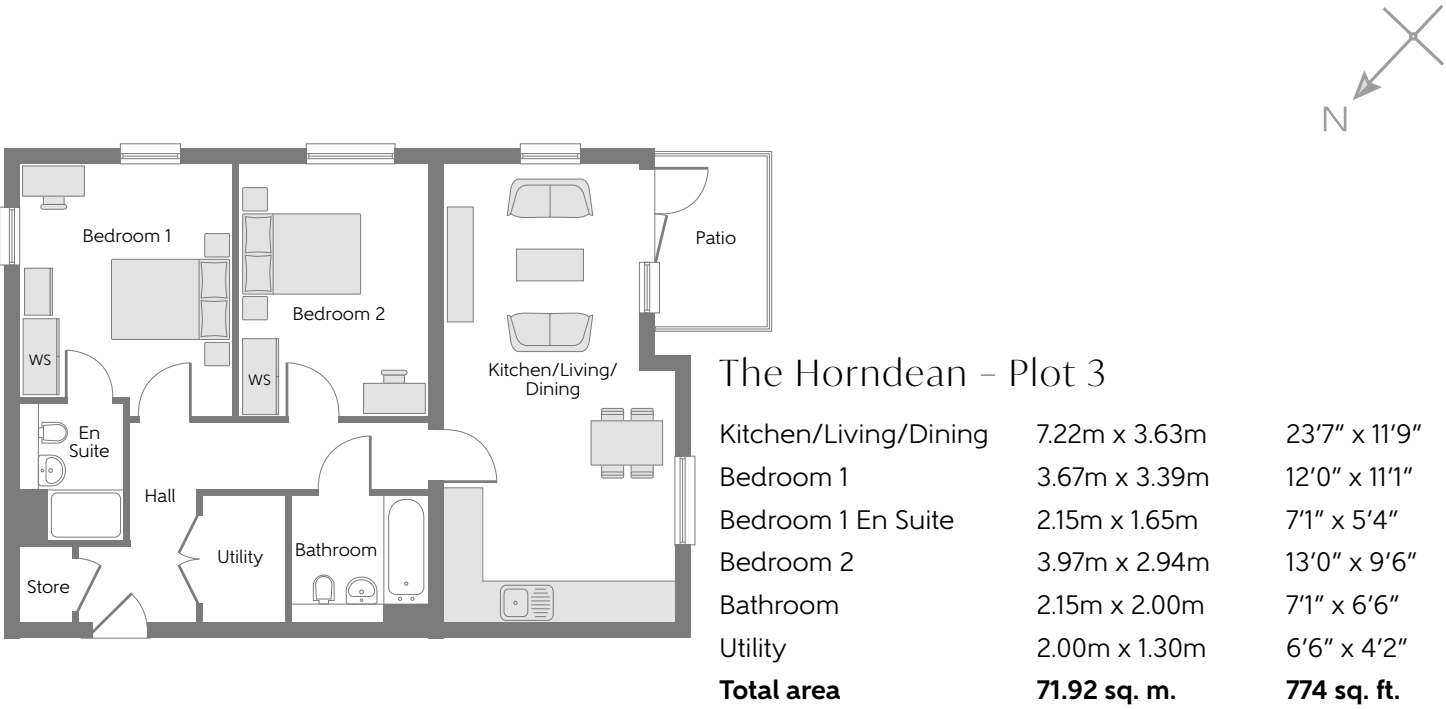
Third Floor

WS - Wardrobe Space (suggestion only, wardrobe not included)

**Furniture arrangements are for illustrative purposes only. Items are not included, nor to scale.**

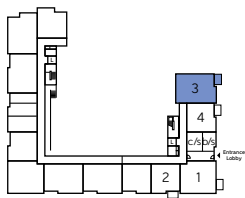
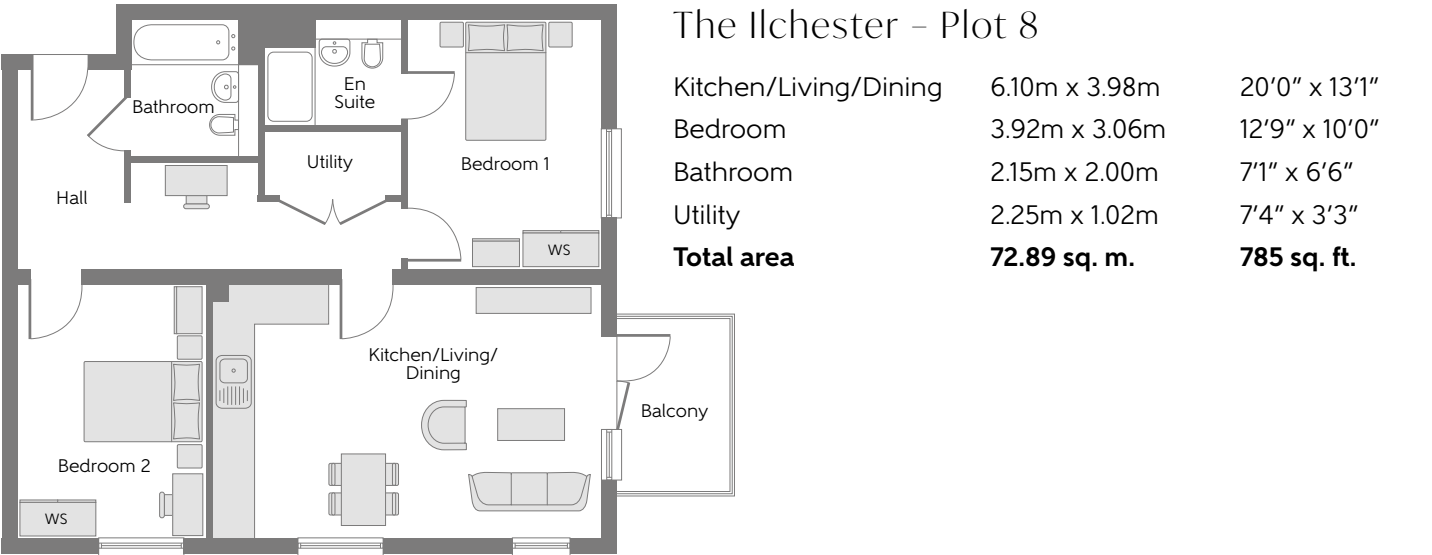
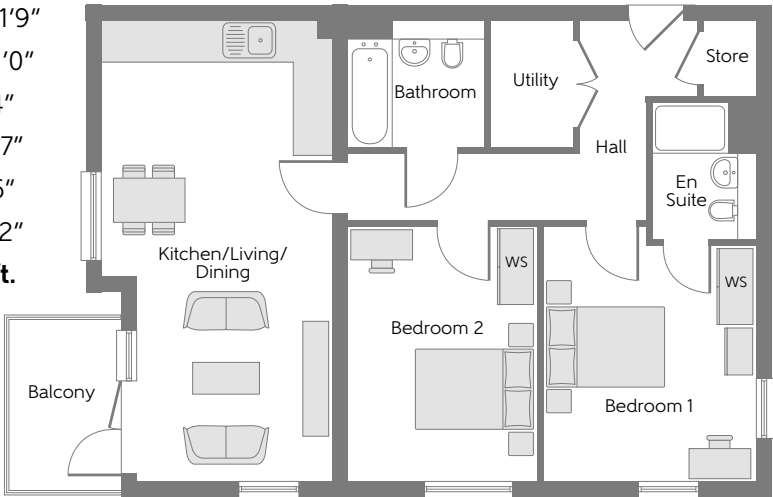
The items shown in this key may be subject to change, and positions could vary from those indicated on this floorplan. Please refer to Sales Advisor for details of your selected plot. External finishes and landscaping may vary. Please refer to Sales Advisor for further details. All dimensions are approximate and should not be used for carpet sizes, appliance spaces or furniture. We operate a policy of continuous improvement and individual features such as kitchen and bathroom layouts, doors, windows, garages and elevational treatments may vary from time to time. Consequently these particulars should be treated as general guidance only and do not constitute a contract, part of a contract or a warranty.



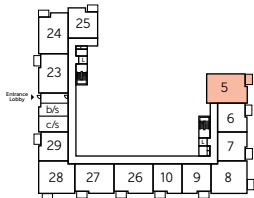


The Heydon – Plot 5

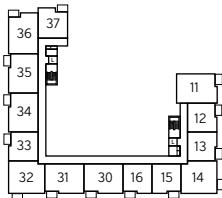
Kitchen/Living/Dining	7.26m x 3.63m	23'8" x 11'9"
Bedroom 1	3.73m x 3.37m	12'2" x 11'0"
Bedroom 1 En Suite	2.15m x 1.65m	7'1" x 5'4"
Bedroom 2	4.01m x 2.95m	13'1" x 9'7"
Bathroom	2.15m x 2.00m	7'1" x 6'6"
Utility	2.00m x 1.30m	6'6" x 4'2"
<b>Total area</b>	<b>72.36sq. m.</b>	<b>779 sq. ft.</b>



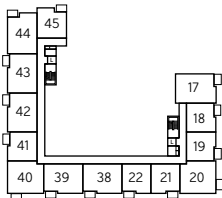
Lower Ground Floor



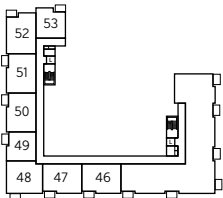
Upper Ground Floor



First Floor



Second Floor

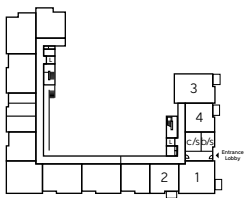


Third Floor

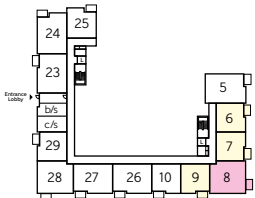
WS - Wardrobe Space (suggestion only, wardrobe not included)

Furniture arrangements are for illustrative purposes only. Items are not included, nor to scale.

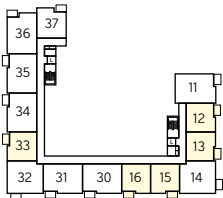
The items shown in this key may be subject to change, and positions could vary from those indicated on this floorplan. Please refer to Sales Advisor for details of your selected plot. External finishes and landscaping may vary. Please refer to Sales Advisor for further details. All dimensions are approximate and should not be used for carpet sizes, appliance spaces or furniture. We operate a policy of continuous improvement and individual features such as kitchen and bathroom layouts, doors, windows, garages and elevational treatments may vary from time to time. Consequently these particulars should be treated as general guidance only and do not constitute a contract, part of a contract or a warranty.



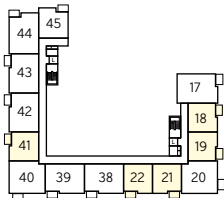
Lower Ground Floor



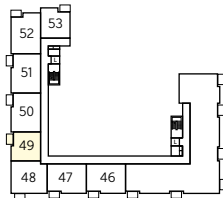
Upper Ground Floor



First Floor



Second Floor



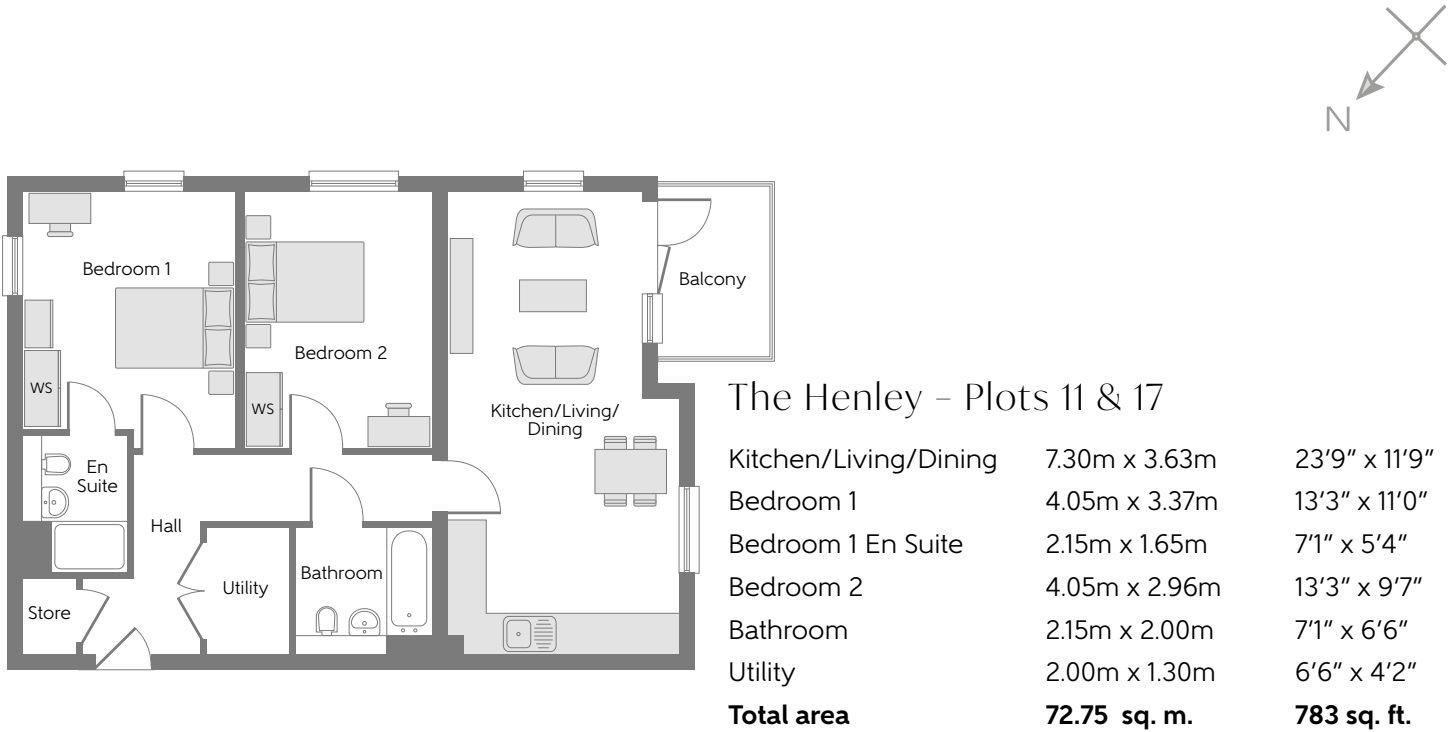
Third Floor

WS - Wardrobe Space (suggestion only, wardrobe not included)

Furniture arrangements are for illustrative purposes only. Items are not included, nor to scale.

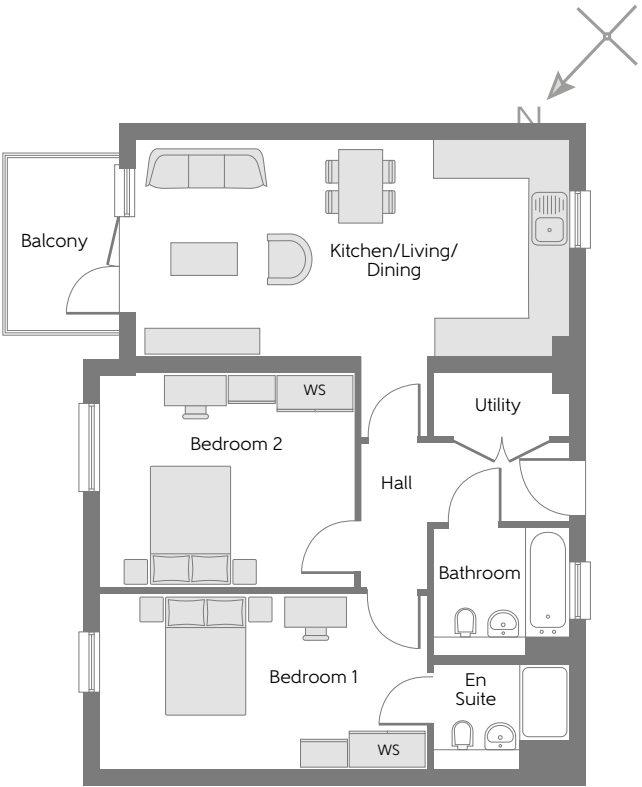
The items shown in this key may be subject to change, and positions could vary from those indicated on this floorplan. Please refer to Sales Advisor for details of your selected plot. External finishes and landscaping may vary. Please refer to Sales Advisor for further details. All dimensions are approximate and should not be used for carpet sizes, appliance spaces or furniture. We operate a policy of continuous improvement and individual features such as kitchen and bathroom layouts, doors, windows, garages and elevational treatments may vary from time to time. Consequently these particulars should be treated as general guidance only and do not constitute a contract, part of a contract or a warranty.





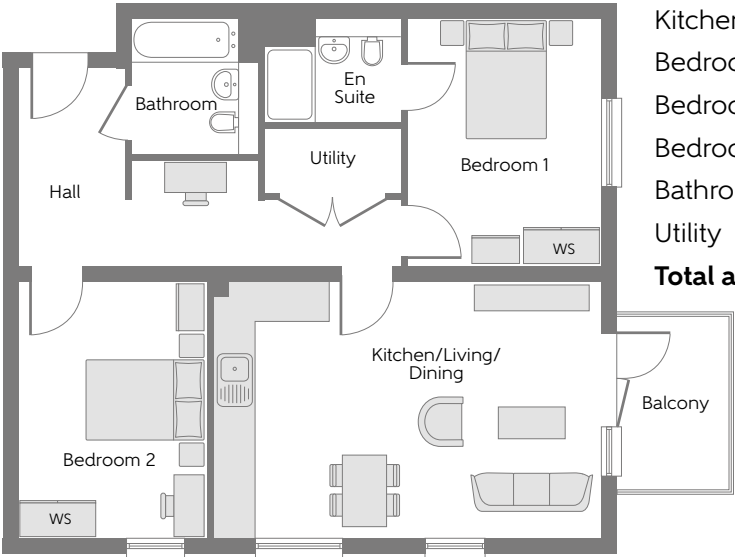
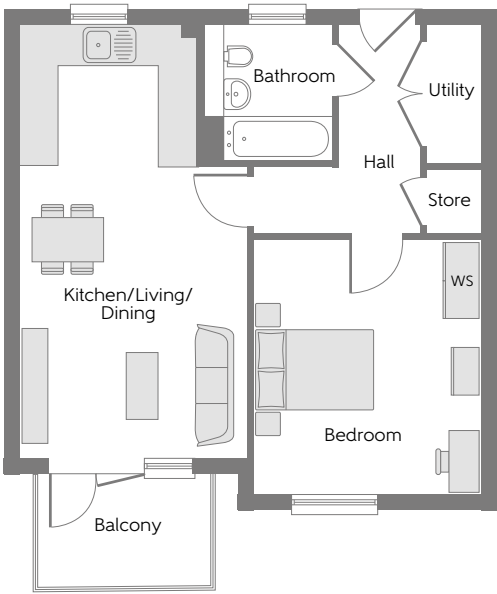
The Lavenham - Plots 23, 26 & 27

Kitchen/Living/Dining	6.85m x 3.42m	22'5" x 11'2"
Bedroom 1	5.16m x 2.76m	16'9" x 9'1"
Bedroom 1 En Suite	2.15m x 1.65m	7'1" x 5'4"
Bedroom 2	4.01m x 3.37m	13'2" x 11'1"
Bathroom	2.15m x 2.00m	7'1" x 6'6"
Utility	2.15m x 1.00m	7'1" x 6'6"
<b>Total area</b>	<b>70.62 sq. m.</b>	<b>760 sq. ft.</b>



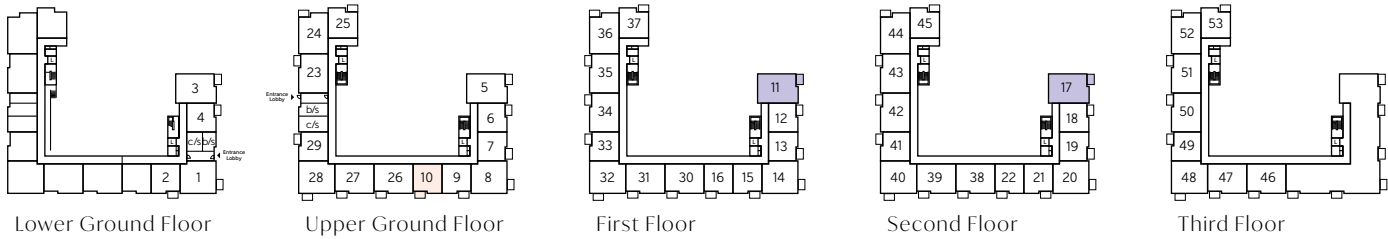
The Ambleside - Plot 10

Kitchen/Living/Dining	6.85m x 3.58m	22'5" x 11'7"
Bedroom	4.01m x 3.59m	13'2" x 11'8"
Bathroom	2.15m x 2.00m	7'1" x 6'6"
Utility	2.20m x 0.85m	7'2" x 2'8"
<b>Total area</b>	<b>51.07 sq. m.</b>	<b>550 sq. ft.</b>



The Holt - Plots 14, 20, 32, 40 & 48

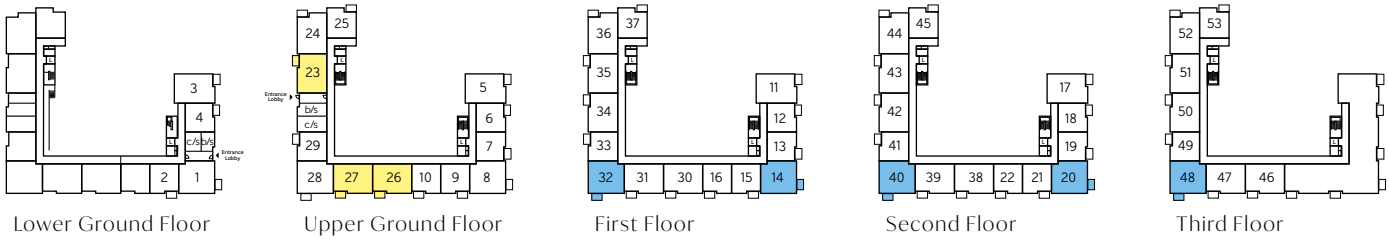
Kitchen/Living/Dining	6.11m x 4.02m	20'0" x 13'2"
Bedroom 1	3.92m x 3.06m	12'9" x 10'0"
Bedroom 1 En Suite	2.15m x 1.65m	7'1" x 5'4"
Bedroom 2	4.02m x 2.99m	13'2" x 9'8"
Bathroom	2.15m x 2.00m	7'1" x 6'6"
Utility	2.15m x 1.02m	7'1" x 3'3"
<b>Total area</b>	<b>73.25 sq. m.</b>	<b>789 sq. ft.</b>



WS - Wardrobe Space (suggestion only, wardrobe not included)

Furniture arrangements are for illustrative purposes only. Items are not included, nor to scale.

The items shown in this key may be subject to change, and positions could vary from those indicated on this floorplan. Please refer to Sales Advisor for details of your selected plot. External finishes and landscaping may vary. Please refer to Sales Advisor for further details. All dimensions are approximate and should not be used for carpet sizes, appliance spaces or furniture. We operate a policy of continuous improvement and individual features such as kitchen and bathroom layouts, doors, windows, garages and elevational treatments may vary from time to time. Consequently these particulars should be treated as general guidance only and do not constitute a contract, part of a contract or a warranty.

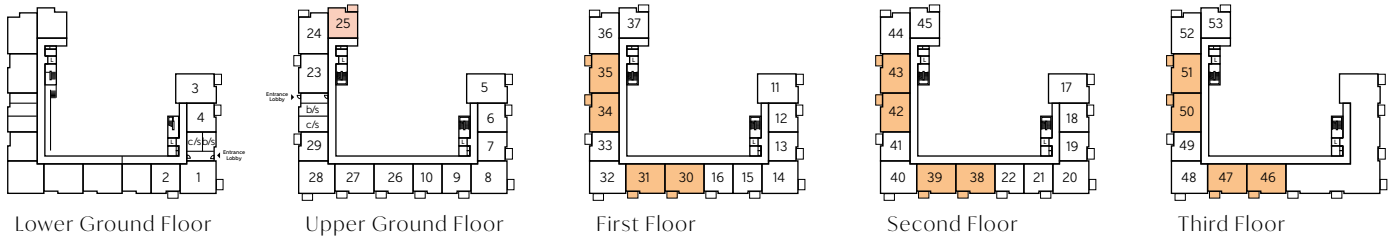
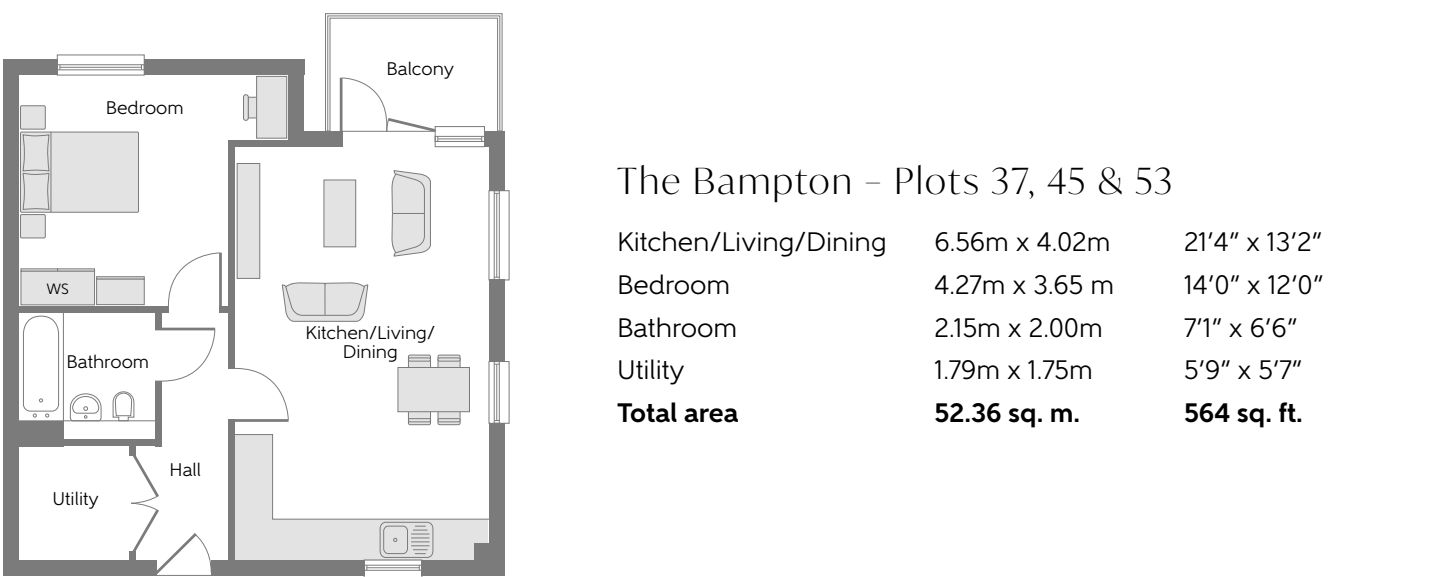
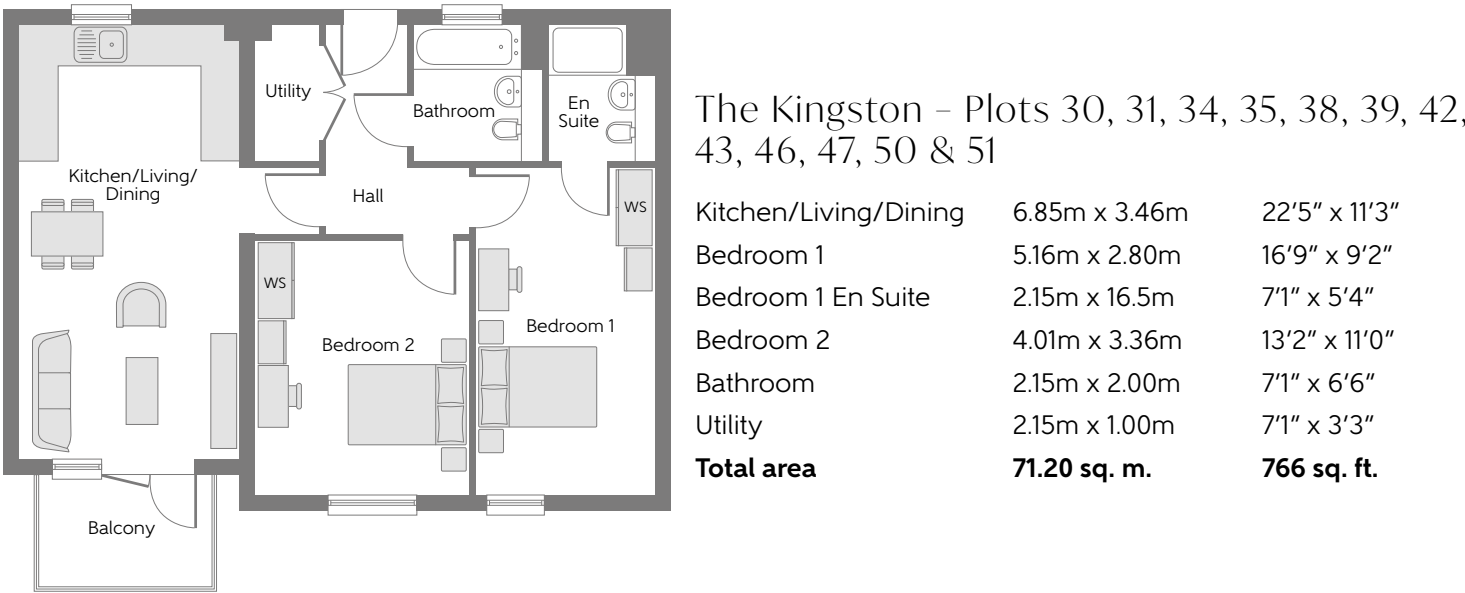
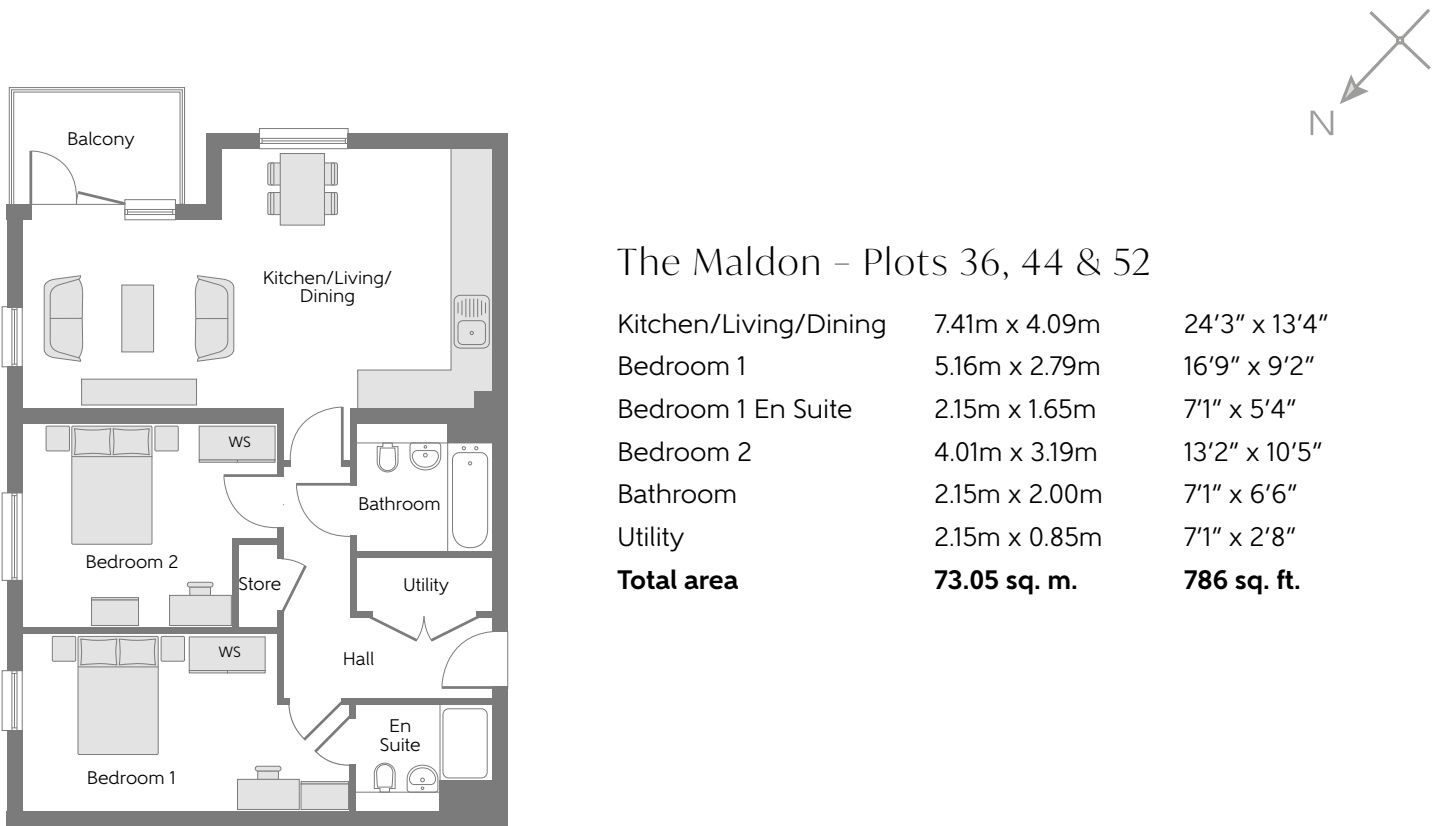
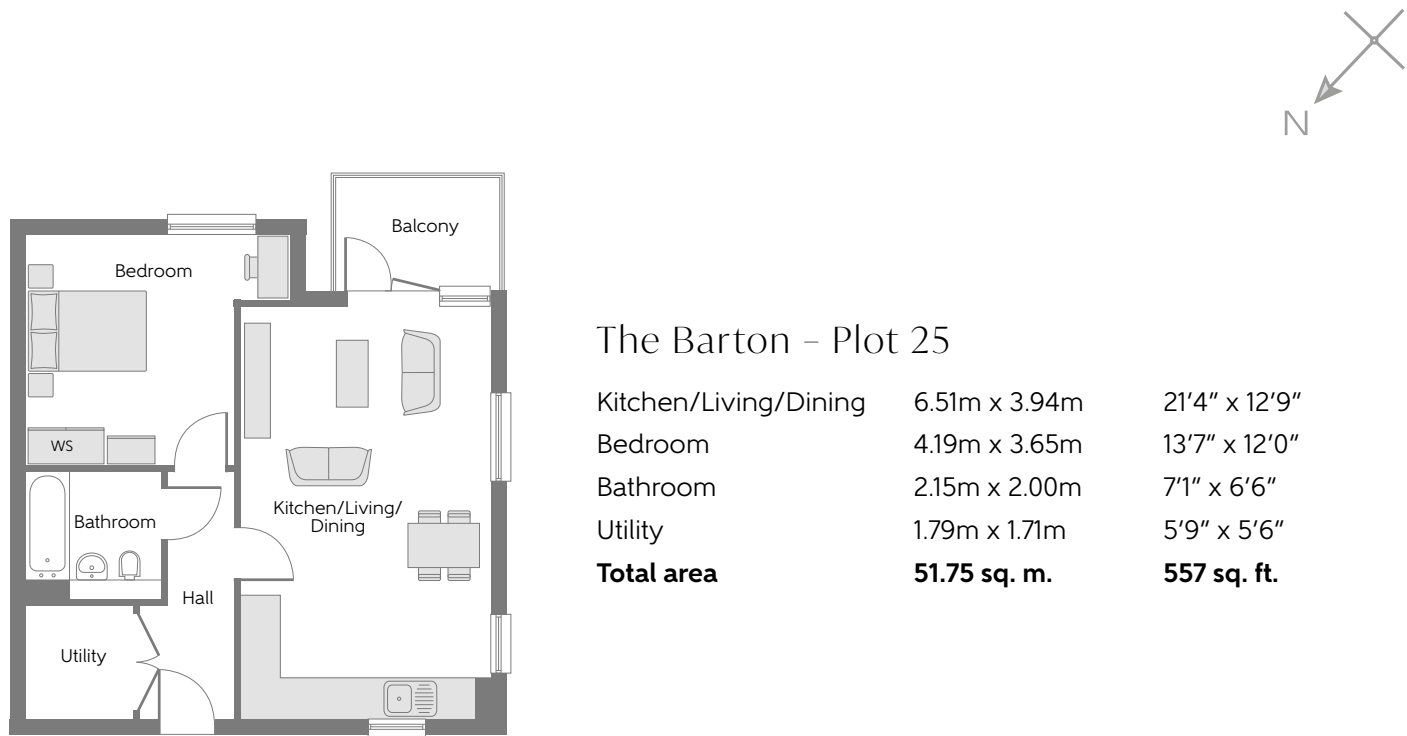


WS - Wardrobe Space (suggestion only, wardrobe not included)

Furniture arrangements are for illustrative purposes only. Items are not included, nor to scale.

The items shown in this key may be subject to change, and positions could vary from those indicated on this floorplan. Please refer to Sales Advisor for details of your selected plot. External finishes and landscaping may vary. Please refer to Sales Advisor for further details. All dimensions are approximate and should not be used for carpet sizes, appliance spaces or furniture. We operate a policy of continuous improvement and individual features such as kitchen and bathroom layouts, doors, windows, garages and elevational treatments may vary from time to time. Consequently these particulars should be treated as general guidance only and do not constitute a contract, part of a contract or a warranty.

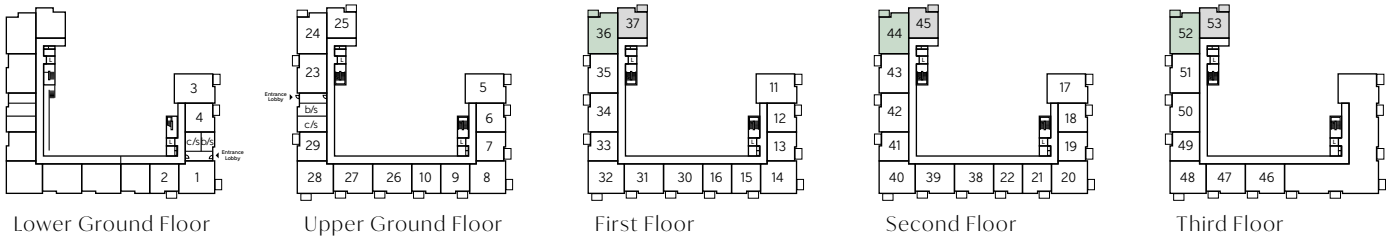




WS - Wardrobe Space (suggestion only, wardrobe not included)

Furniture arrangements are for illustrative purposes only. Items are not included, nor to scale.

The items shown in this key may be subject to change, and positions could vary from those indicated on this floorplan. Please refer to Sales Advisor for details of your selected plot. External finishes and landscaping may vary. Please refer to Sales Advisor for further details. All dimensions are approximate and should not be used for carpet sizes, appliance spaces or furniture. We operate a policy of continuous improvement and individual features such as kitchen and bathroom layouts, doors, windows, garages and elevational treatments may vary from time to time. Consequently these particulars should be treated as general guidance only and do not constitute a contract, part of a contract or a warranty.

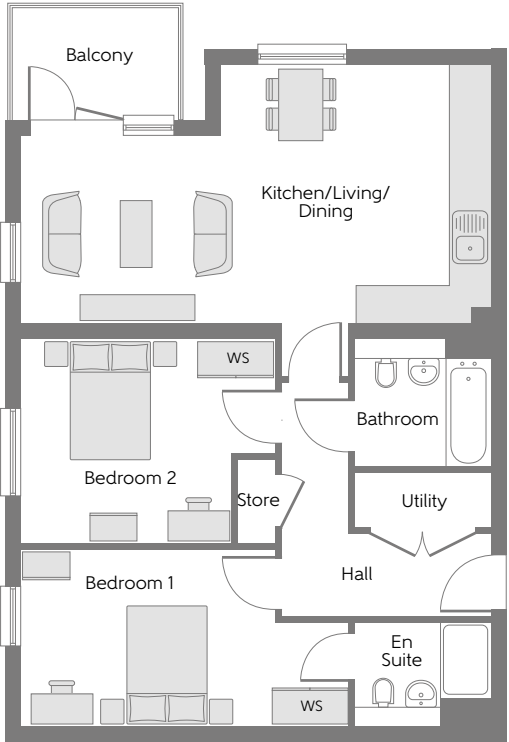


WS - Wardrobe Space (suggestion only, wardrobe not included)

Furniture arrangements are for illustrative purposes only. Items are not included, nor to scale.

The items shown in this key may be subject to change, and positions could vary from those indicated on this floorplan. Please refer to Sales Advisor for details of your selected plot. External finishes and landscaping may vary. Please refer to Sales Advisor for further details. All dimensions are approximate and should not be used for carpet sizes, appliance spaces or furniture. We operate a policy of continuous improvement and individual features such as kitchen and bathroom layouts, doors, windows, garages and elevational treatments may vary from time to time. Consequently these particulars should be treated as general guidance only and do not constitute a contract, part of a contract or a warranty.





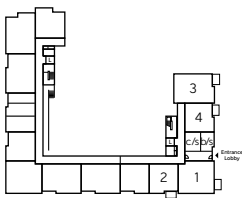
The Melton – Plot 24

Kitchen/Living/Dining	7.41m x 4.09m	24'3" x 13'4"
Bedroom 1	5.16m x 2.79m	16'9" x 9'2"
Bedroom 1 En Suite	2.15m x 1.65m	7'1" x 5'4"
Bedroom 2	4.01m x 3.19m	13'2" x 10'5"
Bathroom	2.15m x 2.00m	7'1" x 6'6"
Utility	2.15m x 8.50m	7'1" x 2'8"
Total area	73.05 sq. m.	786 sq. ft.

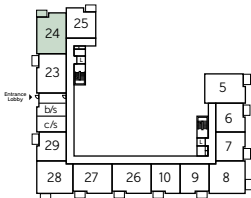


Drayton Court

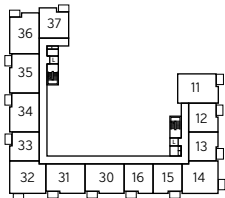
ONE AND TWO BEDROOM APARTMENTS



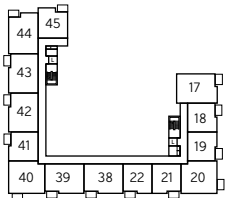
Lower Ground Floor



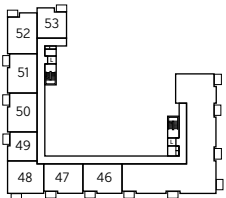
Upper Ground Floor



First Floor



Second Floor



Third Floor

WS - Wardrobe Space (suggestion only, wardrobe not included)

Furniture arrangements are for illustrative purposes only. Items are not included, nor to scale.

The items shown in this key may be subject to change, and positions could vary from those indicated on this floorplan. Please refer to Sales Advisor for details of your selected plot. External finishes and landscaping may vary. Please refer to Sales Advisor for further details. All dimensions are approximate and should not be used for carpet sizes, appliance spaces or furniture. We operate a policy of continuous improvement and individual features such as kitchen and bathroom layouts, doors, windows, garages and elevational treatments may vary from time to time. Consequently these particulars should be treated as general guidance only and do not constitute a contract, part of a contract or a warranty.



THE  
ARTISAN  
COLLECTION

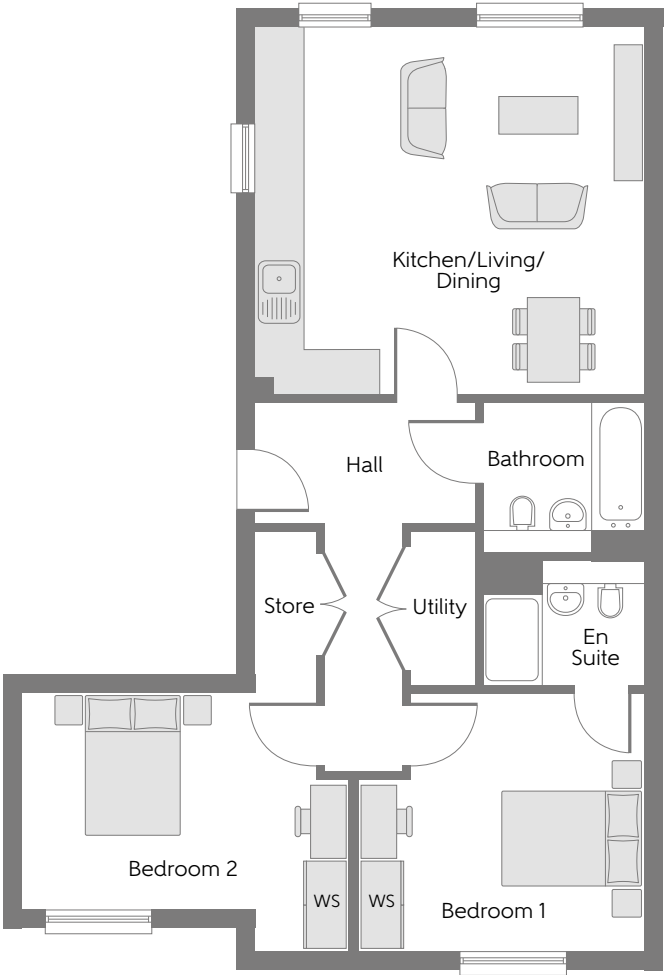
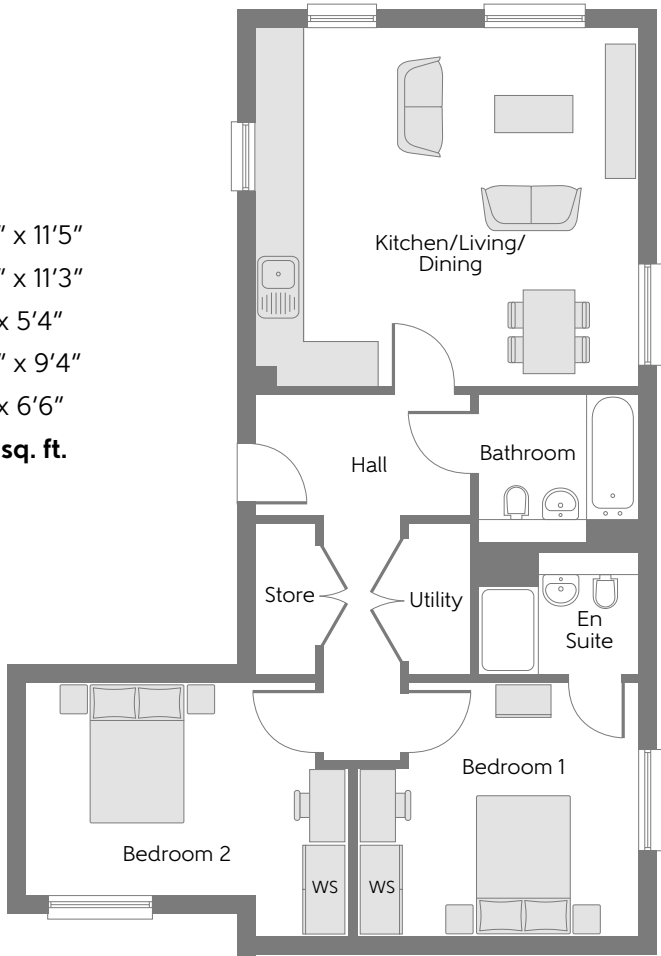






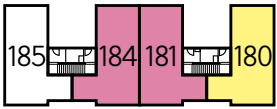
The Wareham – Plot 180 & 183

Kitchen/Living/Dining	4.83m x 3.51m	15’8” x 11’5”
Bedroom 1	3.79m x 3.43m	12’4” x 11’3”
Bedroom 1 En Suite	2.15m x 1.65m	7’1” x 5’4”
Bedroom 2	4.35m x 2.87m	14’3” x 9’4”
Bathroom	2.15m x 2.00m	7’1” x 6’6”
<b>Total area</b>	<b>71.14 sq. m.</b>	<b>766 sq. ft.</b>

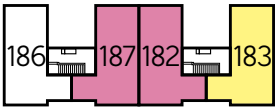


The Wetherby –  
Plots 181, 182, 184 & 187

Kitchen/Living/Dining	5.17m x 4.87m	16’9” x 16’0”
Bedroom 1	3.79m x 3.43m	12’4” x 11’3”
Bedroom 1 En Suite	2.15m x 1.65m	7’1” x 5’4”
Bedroom 2	4.35m x 2.87m	14’3” x 9’4”
Bathroom	2.15m x 2.00m	7’1” x 6’6”
<b>Total area</b>	<b>71.14 sq. m.</b>	<b>766 sq. ft.</b>



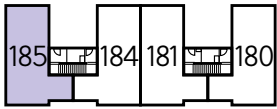
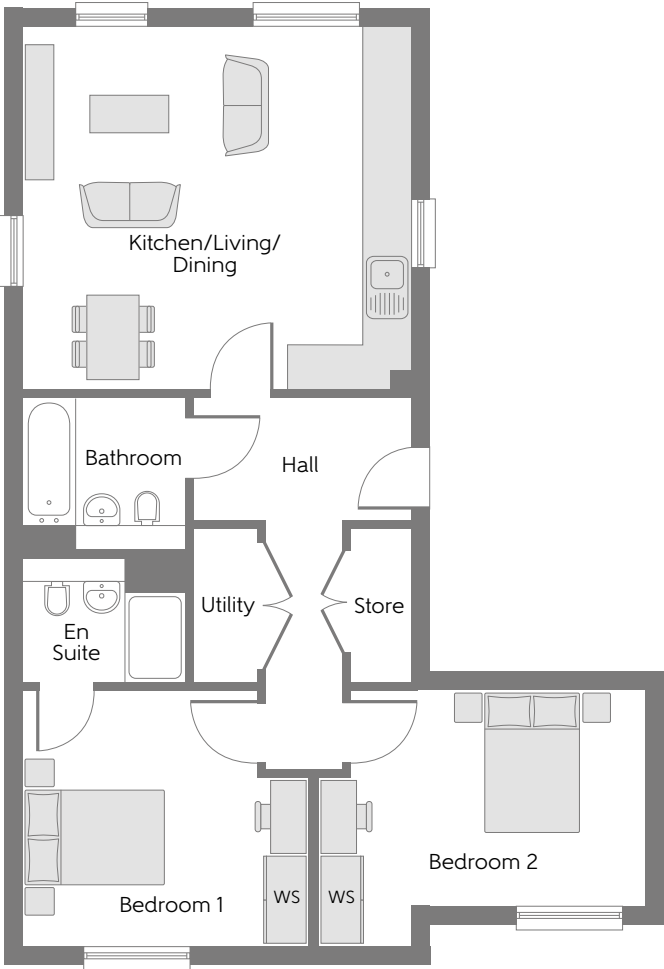
Ground Floor



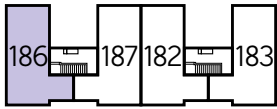
First Floor

The Kingsclere – Plot 185 & 186

Kitchen/Living/Dining	5.16m x 4.83m	16’9” x 16’0”
Bedroom 1	3.79m x 3.43m	12’4” x 11’3”
Bedroom 1 En Suite	2.15m x 1.65m	7’1” x 5’4”
Bedroom 2	4.35m x 2.87m	14’3” x 9’4”
Bathroom	2.15m x 2.00m	7’1” x 6’6”
<b>Total area</b>	<b>71.10 sq. m.</b>	<b>765 sq. ft.</b>



Ground Floor



First Floor

WS – Wardrobe Space (suggestion only, wardrobe not included)

**Furniture arrangements are for illustrative purposes only. Items are not included, nor to scale.**

The items shown in this key may be subject to change, and positions could vary from those indicated on this floorplan. Please refer to Sales Advisor for details of your selected plot. External finishes and landscaping may vary. Please refer to Sales Advisor for further details. All dimensions are approximate and should not be used for carpet sizes, appliance spaces or furniture. We operate a policy of continuous improvement and individual features such as kitchen and bathroom layouts, doors, windows, garages and elevational treatments may vary from time to time. Consequently these particulars should be treated as general guidance only and do not constitute a contract, part of a contract or a warranty.

WS – Wardrobe Space (suggestion only, wardrobe not included)

**Furniture arrangements are for illustrative purposes only. Items are not included, nor to scale.**

The items shown in this key may be subject to change, and positions could vary from those indicated on this floorplan. Please refer to Sales Advisor for details of your selected plot. External finishes and landscaping may vary. Please refer to Sales Advisor for further details. All dimensions are approximate and should not be used for carpet sizes, appliance spaces or furniture. We operate a policy of continuous improvement and individual features such as kitchen and bathroom layouts, doors, windows, garages and elevational treatments may vary from time to time. Consequently these particulars should be treated as general guidance only and do not constitute a contract, part of a contract or a warranty.





# Haverford Tower

ONE AND TWO BEDROOM APARTMENTS

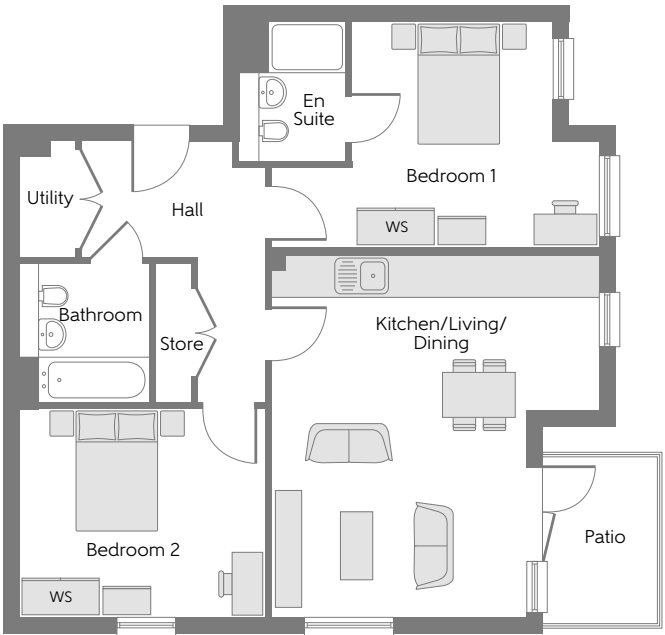
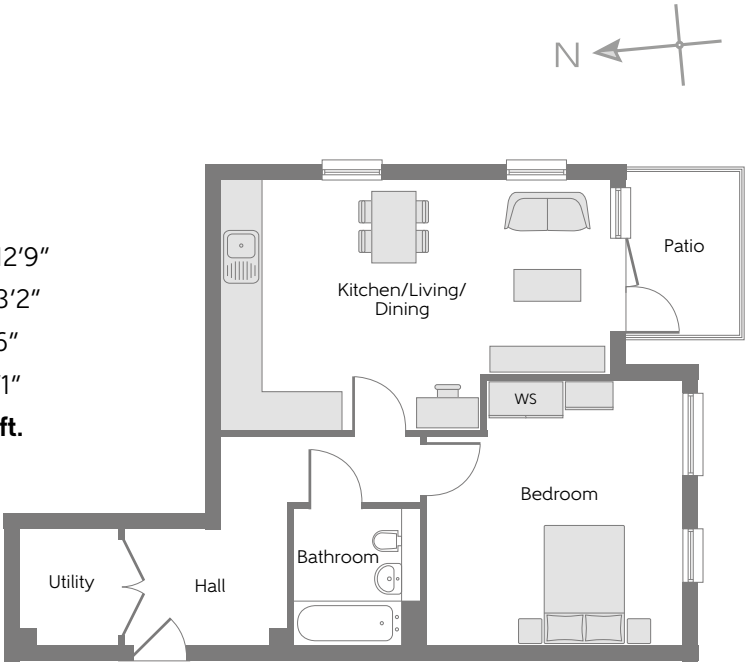


## Haverford Tower

One & two bedroom homes

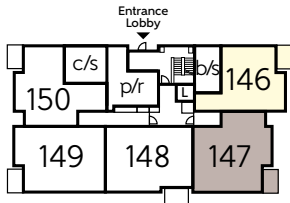
### The Garstand - Plot 146

Kitchen/Living/Dining	6.16m x 3.93m	20'2" x 12'9"
Bedroom	4.18m x 4.03m	13'7" x 13'2"
Bathroom	2.15m x 2.00m	7'1" x 6'6"
Utility	1.84m x 1.55m	6'0" x 5'1"
<b>Total area</b>	<b>52.34 sq. m.</b>	<b>563 sq. ft.</b>

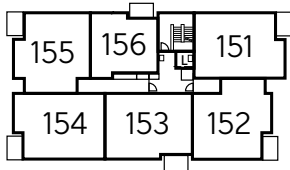


### The Stamford - Plot 147

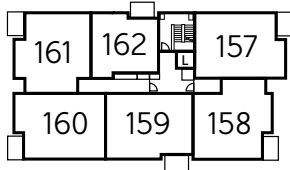
Kitchen/Living/Dining	5.56m x 5.08m	18'2" x 16'7"
Bedroom 1	5.08m x 3.50m	16'7" x 11'5"
En Suite to Bedroom 1	2.15m x 1.65m	7'1" x 5'4"
Bedroom 2	3.79m x 3.20m	12'4" x 10'5"
Bathroom	2.15m x 2.00m	7'1" x 6'6"
Utility	1.80m x 0.85m	5'9" x 2'8"
<b>Total area</b>	<b>50 sq. m.</b>	<b>538 sq. ft.</b>



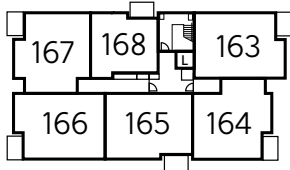
Ground Floor



First Floor



Second Floor



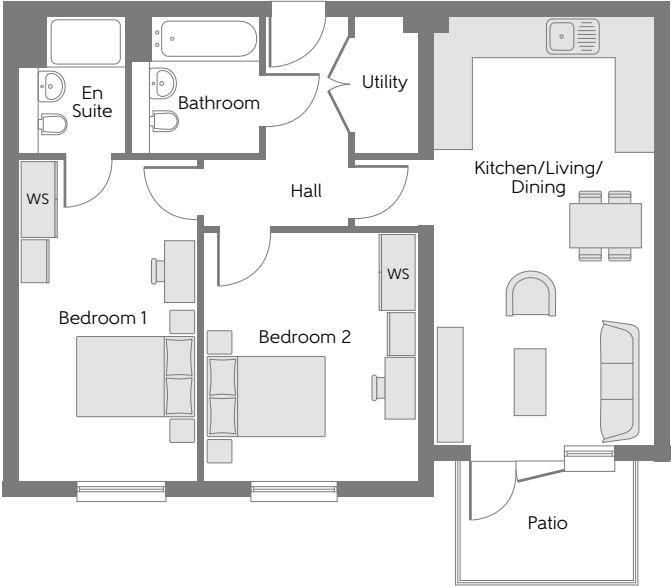
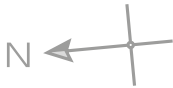
Third Floor

WS - Wardrobe Space (suggestion only, wardrobe not included)

**Furniture arrangements are for illustrative purposes only. Items are not included, nor to scale.**

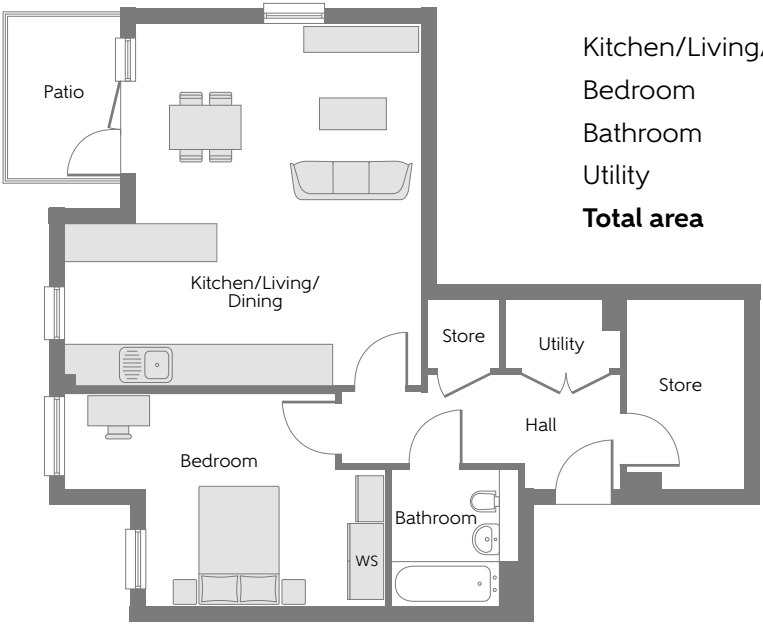
The items shown in this key may be subject to change, and positions could vary from those indicated on this floorplan. Please refer to Sales Advisor for details of your selected plot. External finishes and landscaping may vary. Please refer to Sales Advisor for further details. All dimensions are approximate and should not be used for carpet sizes, appliance spaces or furniture. We operate a policy of continuous improvement and individual features such as kitchen and bathroom layouts, doors, windows, garages and elevational treatments may vary from time to time. Consequently these particulars should be treated as general guidance only and do not constitute a contract, part of a contract or a warranty.





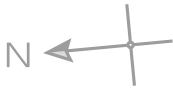
The Lymington – Plot 148

Kitchen/Living/Dining	6.77m x 3.46m	22'2" x 11'3"
Bedroom 1	5.08m x 2.80m	16'7" x 9'2"
En Suite to Bedroom 1	2.15m x 1.65m	7'1" x 5'4"
Bedroom 2	3.93m x 3.37m	12'9" x 11'1"
Bathroom	2.15m x 2.00m	7'1" x 6'6"
Utility	2.15m x 1.04m	7'11" x 3'4"
<b>Total area</b>	<b>70.42 sq. m.</b>	<b>758 sq. ft.</b>



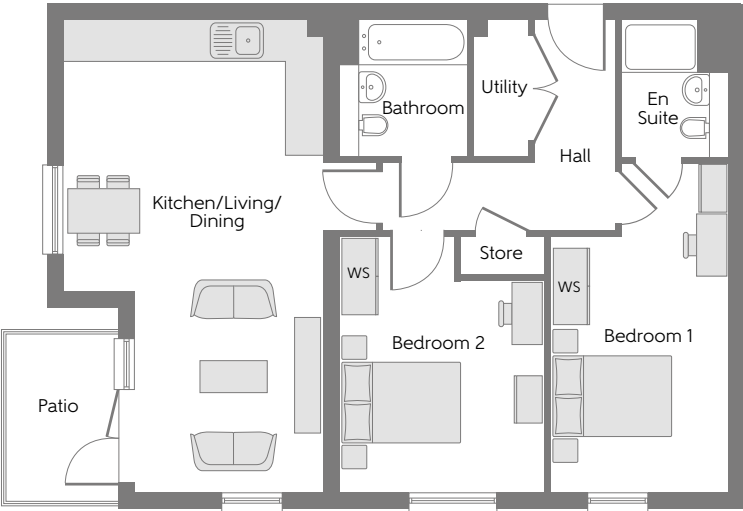
The Hastings – Plot 150

Kitchen/Living/Dining	5.71m x 4.50m	18'7" x 14'8"
Bedroom	3.79m x 3.35m	12'4" x 11'0"
Bathroom	2.15m x 2.00m	7'1" x 6'6"
Utility	1.80m x 1.08m	5'9" x 3'5"
<b>Total area</b>	<b>62.82 sq. m.</b>	<b>676 sq. ft.</b>



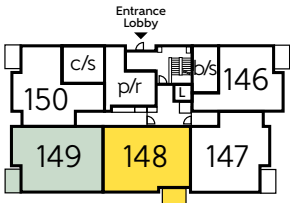
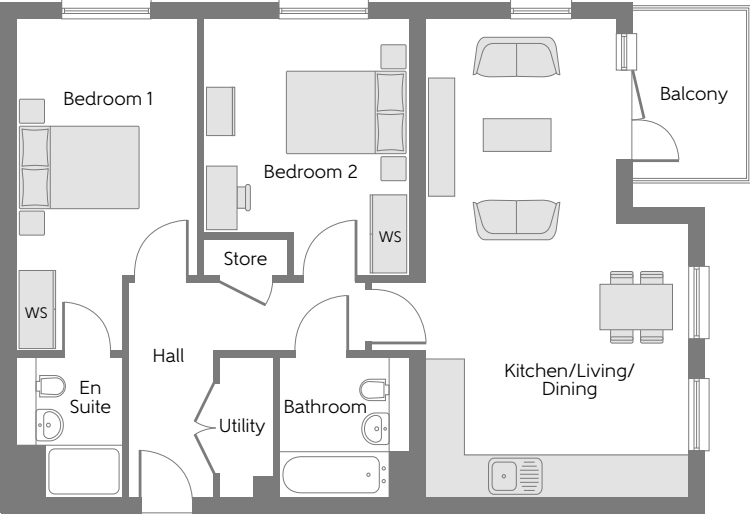
The Midhurst – Plot 149

Kitchen/Living/Dining	7.33m x 4.09m	24'1" x 13'4"
Bedroom 1	5.08m x 2.79m	16'7" x 9'2"
En Suite to Bedroom 1	2.15m x 1.65m	7'11" x 5'4"
Bedroom 2	3.93m x 3.19m	12'9" x 10'5"
Bathroom	2.15m x 2.00m	7'11" x 6'6"
Utility	2.15m x 0.85m	7'11" x 2'8"
<b>Total area</b>	<b>72.19 sq. m.</b>	<b>777 sq. ft.</b>

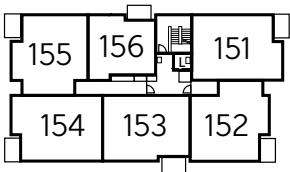


The Caxton – Plots 151, 157 & 163

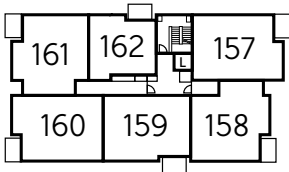
Kitchen/Living/Dining	7.41m x 4.22m	24'3" x 13'9"
Bedroom 1	5.16m x 2.79m	16'9" x 9'2"
En Suite to Bedroom 1	2.15m x 1.65m	7'1" x 5'4"
Bedroom 2	4.01m x 3.20m	13'2" x 10'5"
Bathroom	2.15m x 2.00m	7'1" x 6'6"
Utility	2.15m x 0.85m	7'1" x 2'8"
<b>Total area</b>	<b>71.22 sq. m.</b>	<b>767 sq. ft.</b>



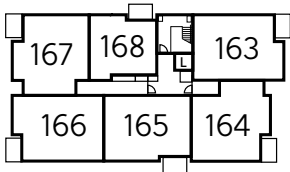
Ground Floor



First Floor



Second Floor

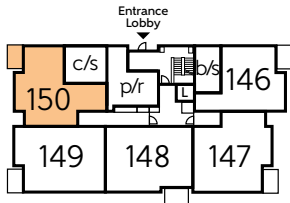


Third Floor

WS - Wardrobe Space (suggestion only, wardrobe not included)

Furniture arrangements are for illustrative purposes only. Items are not included, nor to scale.

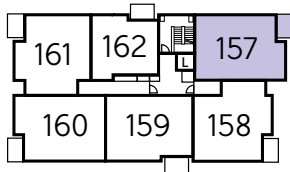
The items shown in this key may be subject to change, and positions could vary from those indicated on this floorplan. Please refer to Sales Advisor for details of your selected plot. External finishes and landscaping may vary. Please refer to Sales Advisor for further details. All dimensions are approximate and should not be used for carpet sizes, appliance spaces or furniture. We operate a policy of continuous improvement and individual features such as kitchen and bathroom layouts, doors, windows, garages and elevational treatments may vary from time to time. Consequently these particulars should be treated as general guidance only and do not constitute a contract, part of a contract or a warranty.



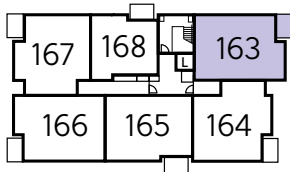
Ground Floor



First Floor



Second Floor



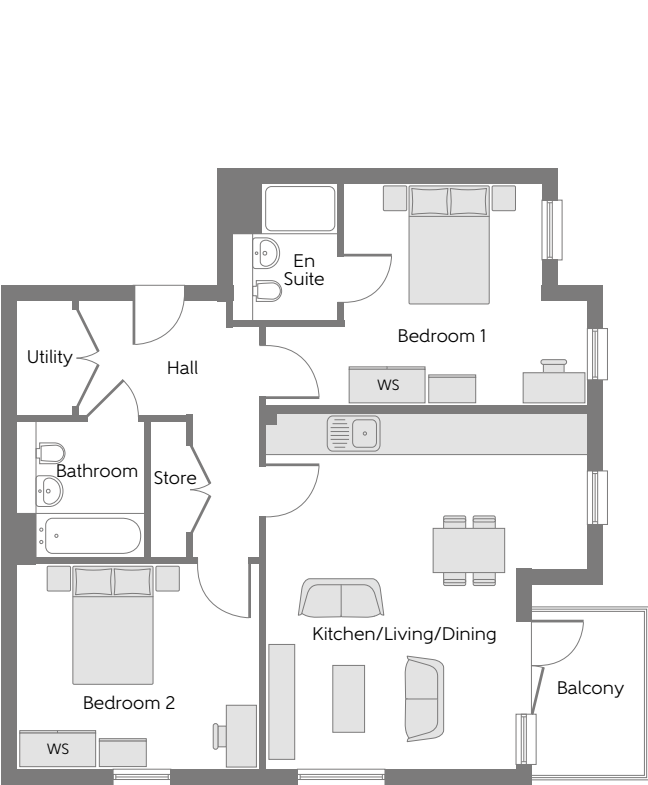
Third Floor

WS - Wardrobe Space (suggestion only, wardrobe not included)

Furniture arrangements are for illustrative purposes only. Items are not included, nor to scale.

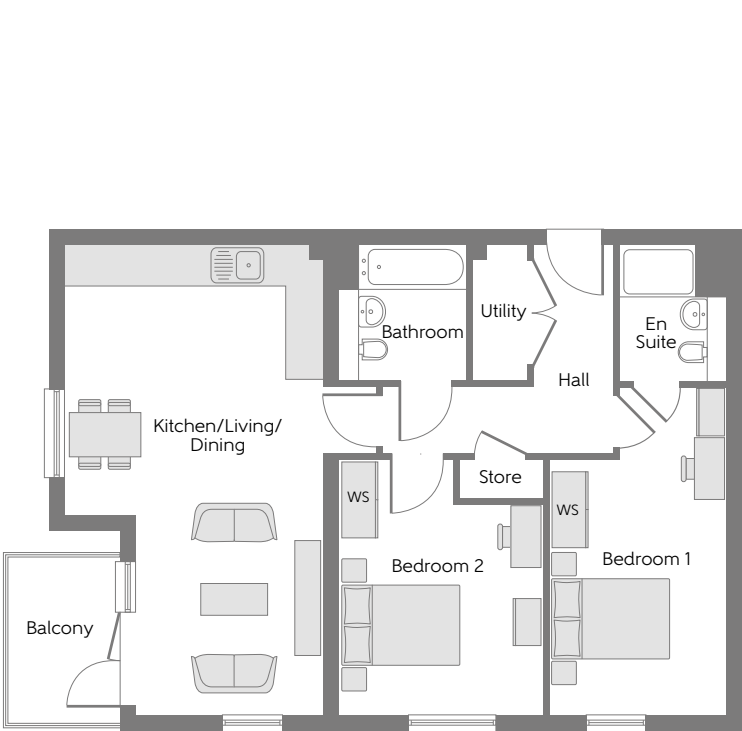
The items shown in this key may be subject to change, and positions could vary from those indicated on this floorplan. Please refer to Sales Advisor for details of your selected plot. External finishes and landscaping may vary. Please refer to Sales Advisor for further details. All dimensions are approximate and should not be used for carpet sizes, appliance spaces or furniture. We operate a policy of continuous improvement and individual features such as kitchen and bathroom layouts, doors, windows, garages and elevational treatments may vary from time to time. Consequently these particulars should be treated as general guidance only and do not constitute a contract, part of a contract or a warranty.





The Ludlow – Plot 153, 159 & 165

Kitchen/Living/Dining	6.85m x 3.46m	22'5" x 11'3"
Bedroom 1	5.16m x 2.80m	16'9" x 9'2"
Ensuite to Bedroom 1	2.15m x 1.65m	7'1" x 5'4"
Bedroom 2	4.01m x 3.37m	13'2" x 11'1"
Bathroom	2.15m x 2.00m	7'1" x 6'6"
Utility	2.15m x 1.04m	7'1" x 3'4"
Total area	70.82 sq. m.	762 sq. ft.

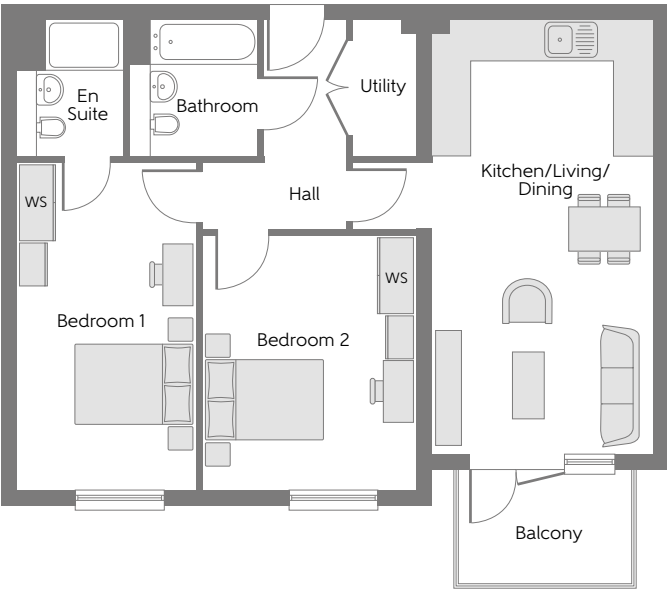


The Maldon – Plots 154, 160 & 166

Kitchen/Living/Dining	7.41m x 4.09m	24'3" x 13'4"
Bedroom 1	5.16m x 2.79m	16'9" x 9'2"
En Suite to Bedroom 1	2.15m x 1.65m	7'1" x 5'4"
Bedroom 2	4.01m x 3.19m	13'2" x 10'5"
Bathroom	2.15m x 2.00m	7'1" x 6'6"
Utility	2.15m x 0.85m	7'1" x 2'8"
Total area	73.05 sq. m.	786 sq. ft.

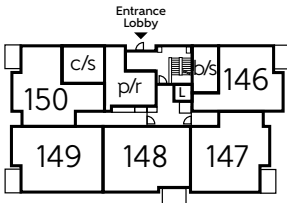
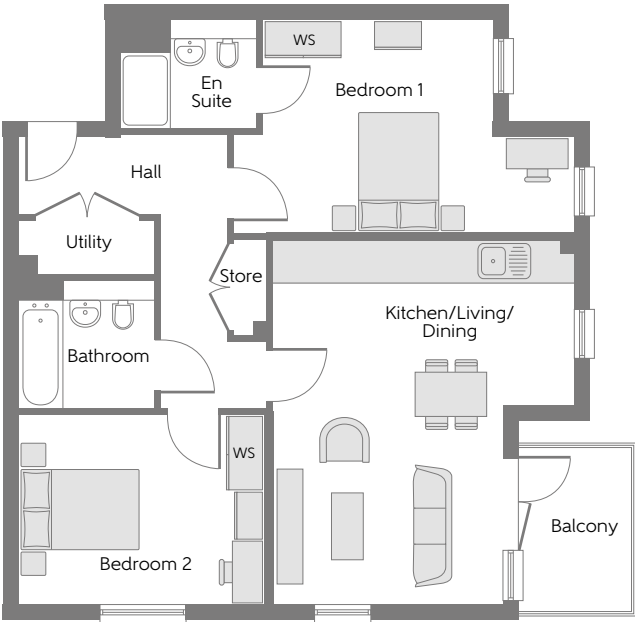
The Shipston – Plot 152

Kitchen/Living/Dining	5.60m x 5.08m	18'4" x 16'7"
Bedroom 1	5.08m x 3.50m	16'7" x 11'5"
En Suite to Bedroom 1	2.15m x 1.65m	7'1" x 5'4"
Bedroom 2	3.79m x 3.22m	12'4" x 10'6"
Bathroom	2.15m x 2.00m	7'1" x 6'6"
Utility	1.80m x 0.85m	5'9" x 2'8"
Total area	70.43 sq. m.	758 sq. ft.

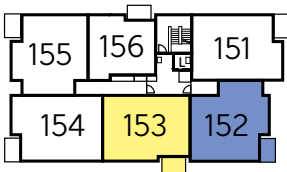


The Tetbury – Plot 155

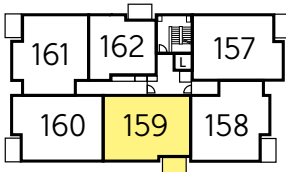
Kitchen/Living/Dining	5.75m x 3.63m	18'8" x 11'9"
Bedroom 1	5.36m x 3.35m	17'6" x 11'0"
En Suite to Bedroom 1	2.15m x 1.70m	7'1" x 5'6"
Bedroom 2	3.89m x 3.00m	12'8" x 9'8"
Bathroom	2.15m x 2.00m	7'1" x 6'6"
Utility	2.15m x 0.85m	7'1" x 2'8"
Total area	71.14 sq. m.	766 sq. ft.



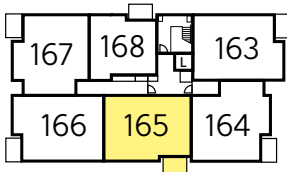
Ground Floor



First Floor



Second Floor

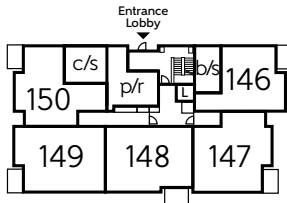


Third Floor

WS - Wardrobe Space (suggestion only, wardrobe not included)

Furniture arrangements are for illustrative purposes only. Items are not included, nor to scale.

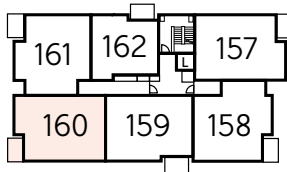
The items shown in this key may be subject to change, and positions could vary from those indicated on this floorplan. Please refer to Sales Advisor for details of your selected plot. External finishes and landscaping may vary. Please refer to Sales Advisor for further details. All dimensions are approximate and should not be used for carpet sizes, appliance spaces or furniture. We operate a policy of continuous improvement and individual features such as kitchen and bathroom layouts, doors, windows, garages and elevational treatments may vary from time to time. Consequently these particulars should be treated as general guidance only and do not constitute a contract, part of a contract or a warranty.



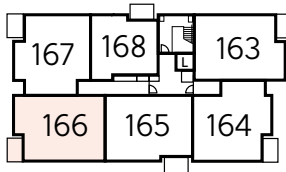
Ground Floor



First Floor



Second Floor



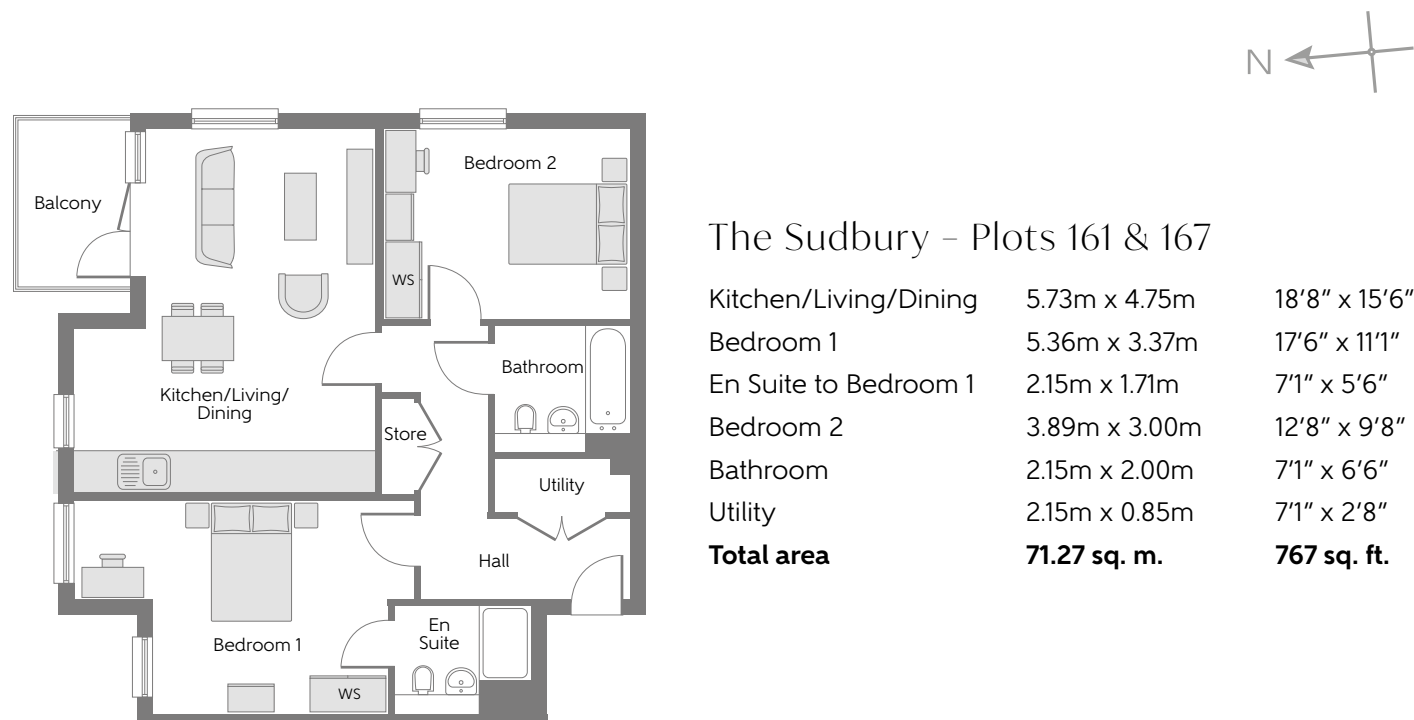
Third Floor

WS - Wardrobe Space (suggestion only, wardrobe not included)

Furniture arrangements are for illustrative purposes only. Items are not included, nor to scale.

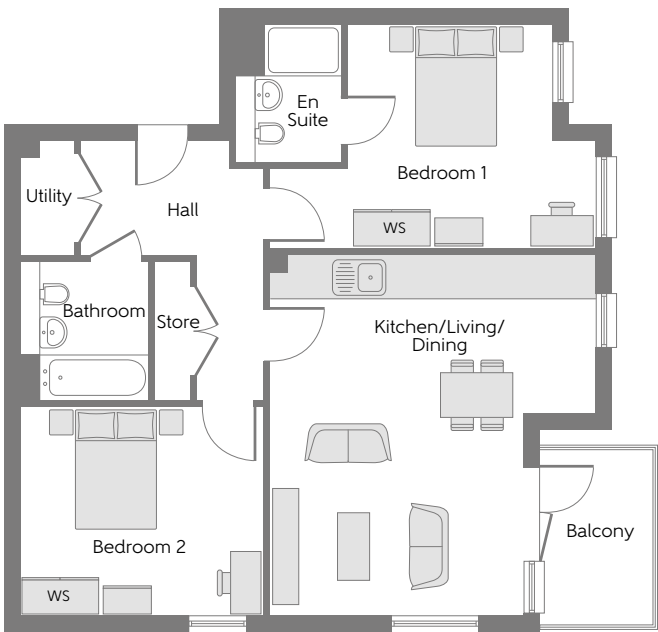
The items shown in this key may be subject to change, and positions could vary from those indicated on this floorplan. Please refer to Sales Advisor for details of your selected plot. External finishes and landscaping may vary. Please refer to Sales Advisor for further details. All dimensions are approximate and should not be used for carpet sizes, appliance spaces or furniture. We operate a policy of continuous improvement and individual features such as kitchen and bathroom layouts, doors, windows, garages and elevational treatments may vary from time to time. Consequently these particulars should be treated as general guidance only and do not constitute a contract, part of a contract or a warranty.





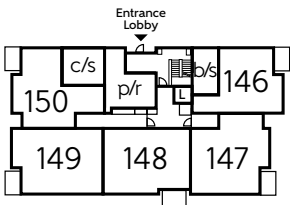
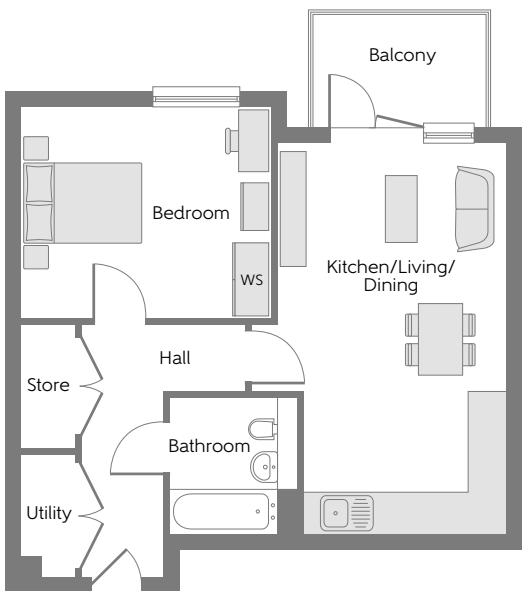
The Chepstow – Plot 156

Kitchen/Living/Dining	6.14m x 3.62m	20'1" x 11'9"
Bedroom	3.93m x 3.34m	12'9" x 10'9"
Bathroom	2.15m x 2.00m	7'1" x 6'6"
Utility	1.94m x 0.85m	6'4" x 2'8"
<b>Total area</b>	<b>50.11 sq. m.</b>	<b>539 sq. ft.</b>

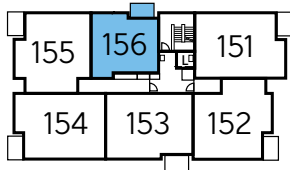


The Charley – Plots 162 & 168

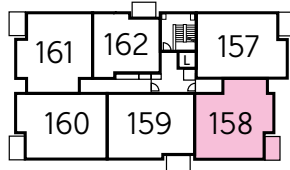
Kitchen/Living/Dining	6.18m x 3.62m	6'2" x 11'9"
Bedroom	3.93m x 3.34m	12'9" x 10'9"
Bathroom	2.15m x 2.00m	7'1" x 6'6"
Utility	1.94m x 0.85m	6'4" x 2'8"
<b>Total area</b>	<b>50.20 sq. m.</b>	<b>540 sq. ft.</b>



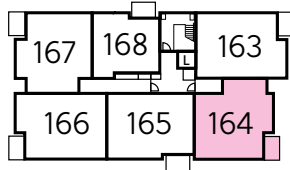
Ground Floor



First Floor



Second Floor

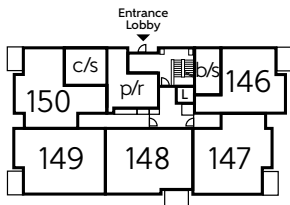


Third Floor

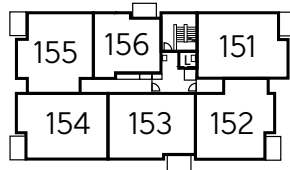
WS - Wardrobe Space (suggestion only, wardrobe not included)

Furniture arrangements are for illustrative purposes only. Items are not included, nor to scale.

The items shown in this key may be subject to change, and positions could vary from those indicated on this floorplan. Please refer to Sales Advisor for details of your selected plot. External finishes and landscaping may vary. Please refer to Sales Advisor for further details. All dimensions are approximate and should not be used for carpet sizes, appliance spaces or furniture. We operate a policy of continuous improvement and individual features such as kitchen and bathroom layouts, doors, windows, garages and elevational treatments may vary from time to time. Consequently these particulars should be treated as general guidance only and do not constitute a contract, part of a contract or a warranty.



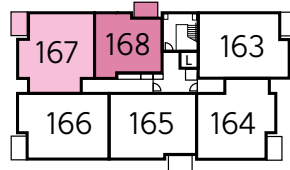
Ground Floor



First Floor



Second Floor



Third Floor

WS - Wardrobe Space (suggestion only, wardrobe not included)

Furniture arrangements are for illustrative purposes only. Items are not included, nor to scale.

The items shown in this key may be subject to change, and positions could vary from those indicated on this floorplan. Please refer to Sales Advisor for details of your selected plot. External finishes and landscaping may vary. Please refer to Sales Advisor for further details. All dimensions are approximate and should not be used for carpet sizes, appliance spaces or furniture. We operate a policy of continuous improvement and individual features such as kitchen and bathroom layouts, doors, windows, garages and elevational treatments may vary from time to time. Consequently these particulars should be treated as general guidance only and do not constitute a contract, part of a contract or a warranty.





# Mander Court

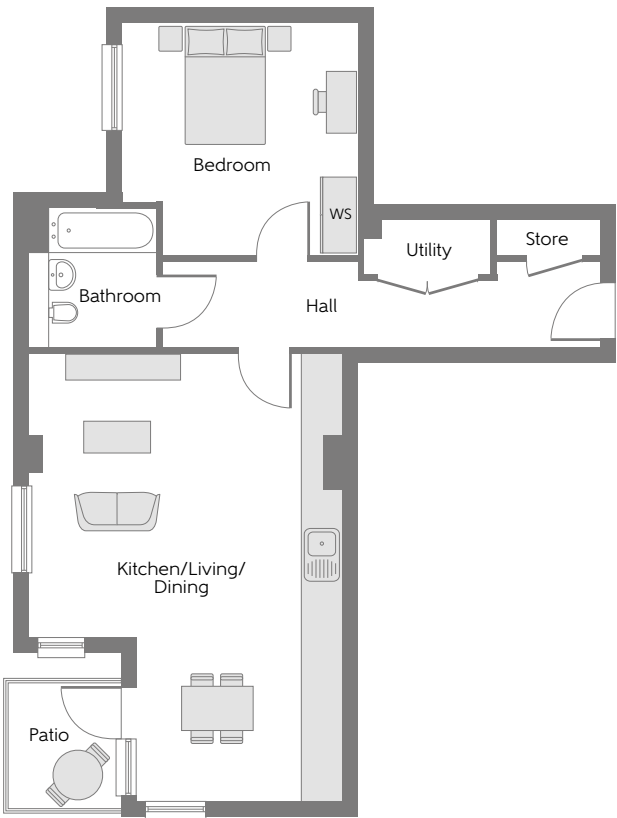
ONE AND TWO BEDROOM APARTMENTS



Bellway

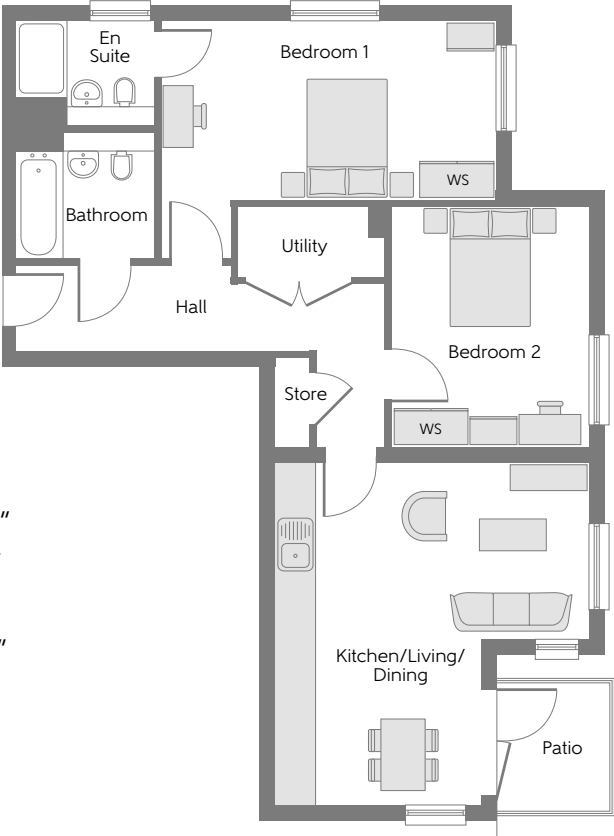
## Mander Court

One & two bedroom homes



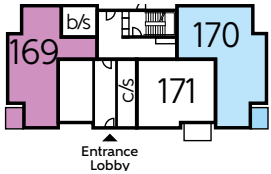
### The Hadley – Plot 169

Kitchen/Living/Dining	7.06m x 4.94m	23'3" x 16'2"
Bedroom	3.71m x 3.67m	12'2" x 12'6"
Bathroom	2.15m x 2.00m	7'1" x 6'6"
Utility	1.78m x 0.89m	5'8" x 2'9"
<b>Total area</b>	<b>59.25 sq. m.</b>	<b>638 sq. ft.</b>



### The Saffron – Plot 170

Kitchen/Living/Dining	5.55m x 4.94m	17'5" x 16'2"
Bedroom 1	5.28m x 2.83m	17'3" x 9'3"
En Suite to Bedroom 1	2.15m x 1.65m	7'1" x 5'4"
Bedroom 2	3.75m x 3.09m	12'3" x 10'1"
Bathroom	2.15m x 2.00m	7'1" x 6'6"
Utility	2.35m x 1.05m	7'7" x 3'4"
<b>Total area</b>	<b>71.68 sq. m.</b>	<b>772 sq. ft.</b>



WS - Wardrobe Space (suggestion only, wardrobe not included)

Ground Floor

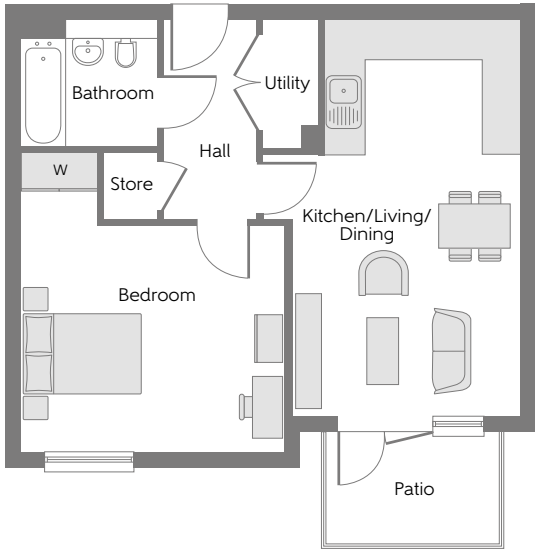
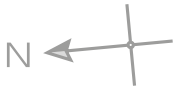
First Floor

Second Floor

**Furniture arrangements are for illustrative purposes only. Items are not included, nor to scale.**

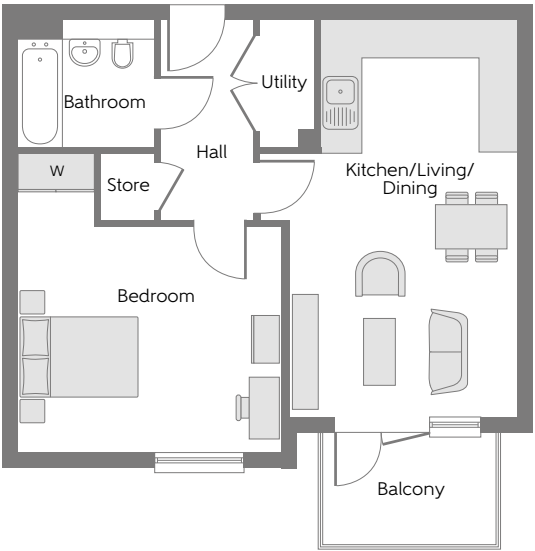
The items shown in this key may be subject to change, and positions could vary from those indicated on this floorplan. Please refer to Sales Advisor for details of your selected plot. External finishes and landscaping may vary. Please refer to Sales Advisor for further details. All dimensions are approximate and should not be used for carpet sizes, appliance spaces or furniture. We operate a policy of continuous improvement and individual features such as kitchen and bathroom layouts, doors, windows, garages and elevational treatments may vary from time to time. Consequently these particulars should be treated as general guidance only and do not constitute a contract, part of a contract or a warranty.





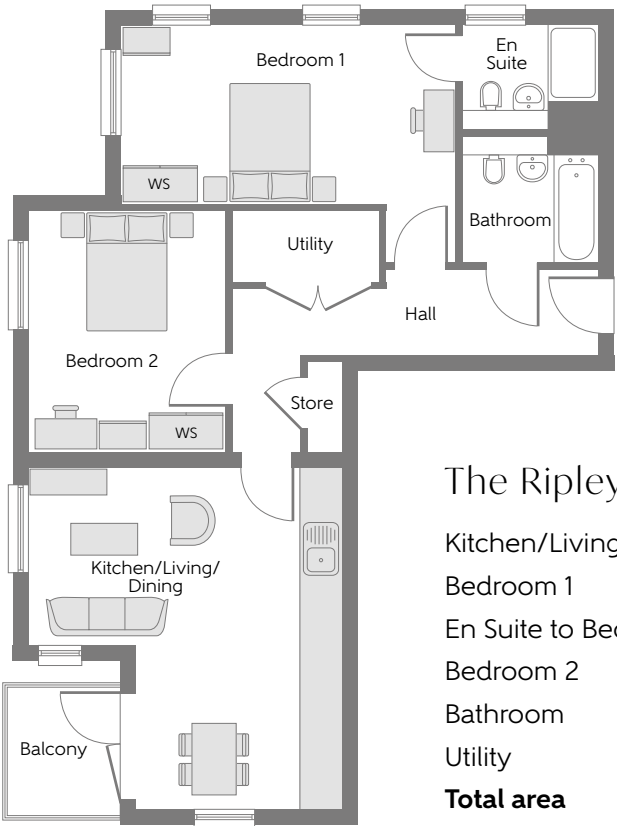
The Dunster – Plot 171

Kitchen/Living/Dining	6.17m x 3.66m	20'2" x 12'0"
Bedroom	4.11m x 3.49m	13'5" x 11'4"
Bathroom	2.15m x 2.00m	7'1" x 6'6"
Utility	2.00m x 0.85m	6'6" x 2'8"
<b>Total area</b>	<b>50.17 sq. m.</b>	<b>540 sq. ft.</b>



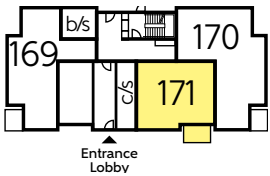
The Dudley – Plots 173, 174, 177 & 178

Kitchen/Living/Dining	6.25m x 3.60m	20'5" x 11'8"
Bedroom	4.15m x 3.57m	13'6" x 11'7"
Bathroom	2.15m x 2.00m	7'1" x 6'6"
Utility	2.00m x 0.85m	6'6" x 2'8"
<b>Total area</b>	<b>50.80 sq. m.</b>	<b>547 sq. ft.</b>

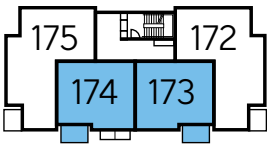


The Ripley – Plots 172, 175, 176 & 179

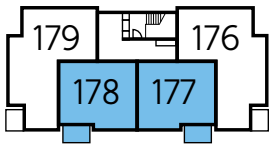
Kitchen/Living/Dining	5.39m x 4.94m	17'8" x 16'2"
Bedroom 1	5.28m x 2.83m	17'3" x 9'3"
En Suite to Bedroom 1	2.15m x 1.65m	7'1" x 5'4"
Bedroom 2	3.79m x 3.08m	12'4" x 10'1"
Bathroom	2.15m x 2.00m	7'1" x 6'6"
Utility	2.35m x 1.13m	7'7" x 3'7"
<b>Total area</b>	<b>72.40 sq. m.</b>	<b>779 sq. ft.</b>



Ground Floor



First Floor

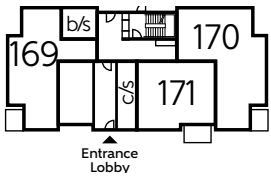
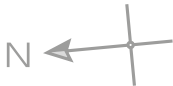


Second Floor

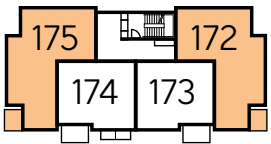
WS - Wardrobe Space (suggestion only, wardrobe not included)

Furniture arrangements are for illustrative purposes only. Items are not included, nor to scale.

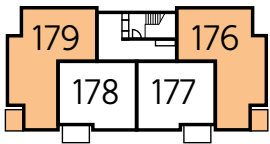
The items shown in this key may be subject to change, and positions could vary from those indicated on this floorplan. Please refer to Sales Advisor for details of your selected plot. External finishes and landscaping may vary. Please refer to Sales Advisor for further details. All dimensions are approximate and should not be used for carpet sizes, appliance spaces or furniture. We operate a policy of continuous improvement and individual features such as kitchen and bathroom layouts, doors, windows, garages and elevational treatments may vary from time to time. Consequently these particulars should be treated as general guidance only and do not constitute a contract, part of a contract or a warranty.



Ground Floor



First Floor



Second Floor

WS - Wardrobe Space (suggestion only, wardrobe not included)

Furniture arrangements are for illustrative purposes only. Items are not included, nor to scale.

The items shown in this key may be subject to change, and positions could vary from those indicated on this floorplan. Please refer to Sales Advisor for details of your selected plot. External finishes and landscaping may vary. Please refer to Sales Advisor for further details. All dimensions are approximate and should not be used for carpet sizes, appliance spaces or furniture. We operate a policy of continuous improvement and individual features such as kitchen and bathroom layouts, doors, windows, garages and elevational treatments may vary from time to time. Consequently these particulars should be treated as general guidance only and do not constitute a contract, part of a contract or a warranty.





# Meridian Court

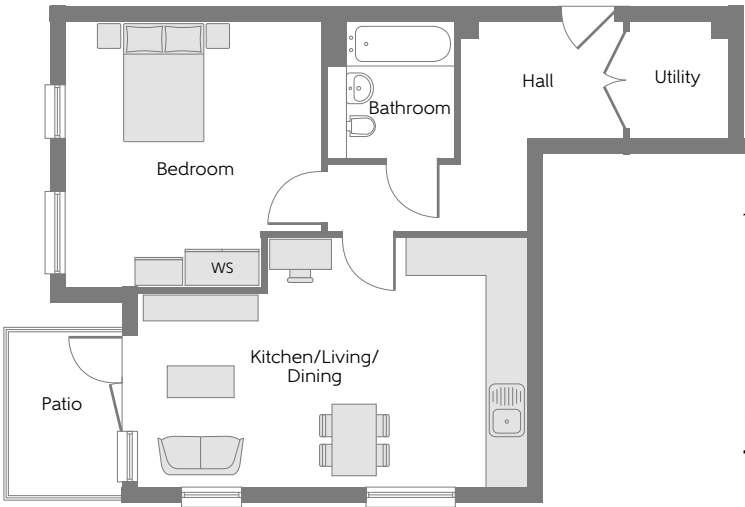
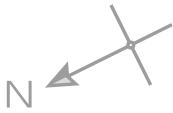
ONE AND TWO BEDROOM APARTMENTS



**Bellway**

## Meridian Court

One & two bedroom homes



### The Garstand – Plot 123

Kitchen/Living/Dining	6.15m x 3.43m	20'2" x 12'9"
Bedroom	4.18m x 4.03m	13'7" x 13'2"
Bathroom	2.15m x 2.00m	7'1" x 6'6"
Utility	1.83m x 1.55m	6'0" x 5'1"
<b>Total area</b>	<b>52.34 sq. m.</b>	<b>563 sq. ft.</b>

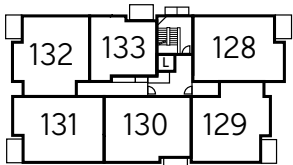


### The Waltham – Plot 124

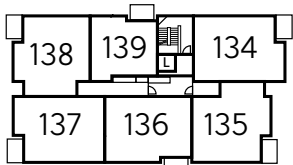
Kitchen/Living/Dining	5.71m x 4.75m	18'7" x 15'6"
Bedroom 1	5.36m x 3.35m	17'6" x 11'0"
En Suite to Bedroom 1	2.15m x 1.71m	7'1" x 5'6"
Bedroom 2	3.90m x 2.96m	12'8" x 9'7"
Bathroom	2.15m x 2.00m	7'1" x 6'6"
Utility	2.14m x 0.85m	7'1" x 2'8"
<b>Total area</b>	<b>54.78 sq. m.</b>	<b>590 sq. ft.</b>



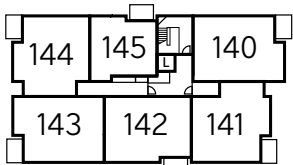
Ground Floor



First Floor



Second Floor



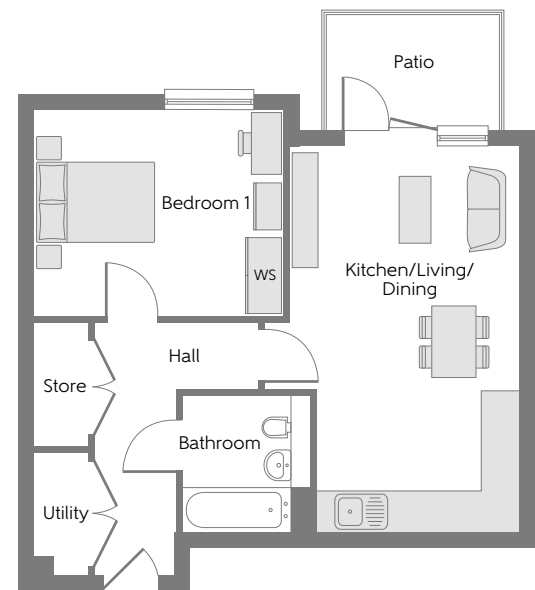
Third Floor

WS - Wardrobe Space (suggestion only, wardrobe not included)

**Furniture arrangements are for illustrative purposes only. Items are not included, nor to scale.**

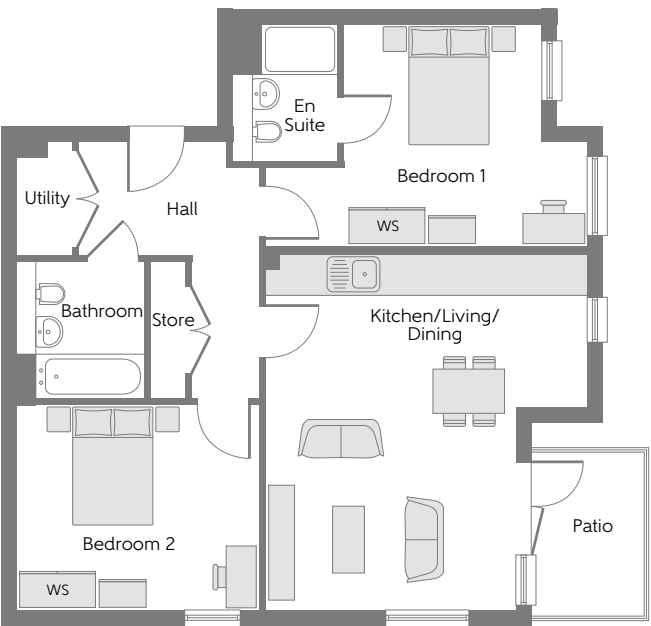
The items shown in this key may be subject to change, and positions could vary from those indicated on this floorplan. Please refer to Sales Advisor for details of your selected plot. External finishes and landscaping may vary. Please refer to Sales Advisor for further details. All dimensions are approximate and should not be used for carpet sizes, appliance spaces or furniture. We operate a policy of continuous improvement and individual features such as kitchen and bathroom layouts, doors, windows, garages and elevational treatments may vary from time to time. Consequently these particulars should be treated as general guidance only and do not constitute a contract, part of a contract or a warranty.





The Chester – Plot 125

Kitchen/Living/Dining	6.10m x 3.62m	20'0" x 11'9"
Bedroom	3.93m x 3.28m	12'9" x 10'7"
Bathroom	2.15m x 2.00m	7'1" x 6'6"
Utility	1.94m x 0.85m	6'4" x 2'8"
<b>Total area</b>	<b>70.67sq. m.</b>	<b>761 sq. ft.</b>

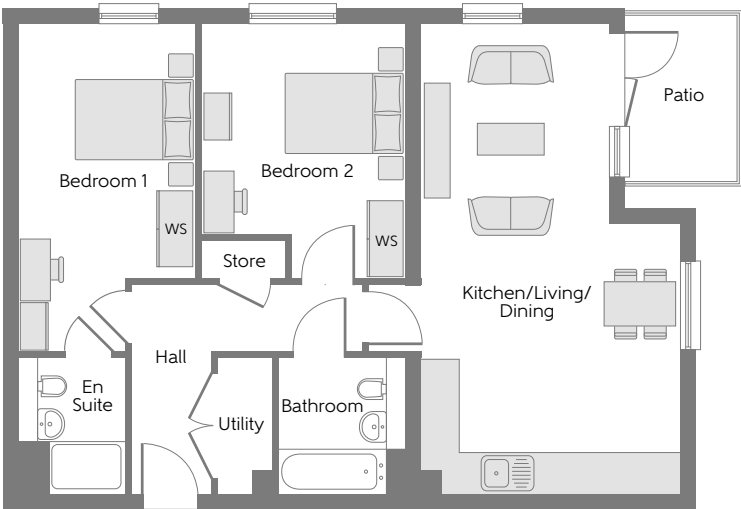


The Maldon – Plots 128, 134 & 140

Kitchen/Living/Dining	7.41m x 4.09m	24'3" x 13'4"
Bedroom 1	5.16m x 2.79m	16'9" x 9'2"
En Suite to Bedroom 1	2.15m x 1.65m	7'1" x 5'4"
Bedroom 2	4.01m x 3.19m	13'2" x 10'5"
Bathroom	2.15m x 2.00m	7'1" x 6'6"
Utility	2.15m x 0.85m	7'1" x 2'8"
<b>Total area</b>	<b>73.05 sq. m.</b>	<b>786 sq. ft.</b>

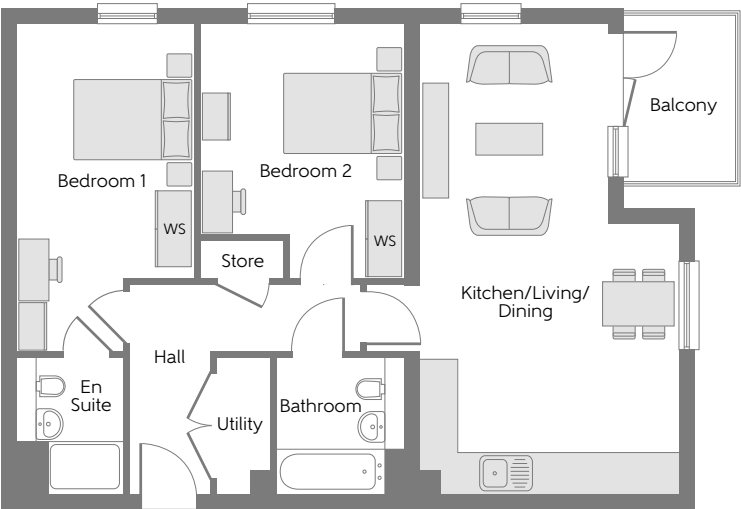
The Midhurst – Plot 126

Kitchen/Living/Dining	7.33m x 4.09m	24'1" x 13'4"
Bedroom 1	5.08m x 2.79m	16'7" x 9'2"
En Suite to Bedroom 1	2.15m x 1.65m	7'11" x 5'4"
Bedroom 2	3.93m x 3.19m	12'9" x 10'5"
Bathroom	2.15m x 2.00m	7'11" x 6'6"
Utility	2.15m x 0.85m	7'11" x 2'8"
<b>Total area</b>	<b>72.19 sq. m.</b>	<b>777 sq. ft.</b>

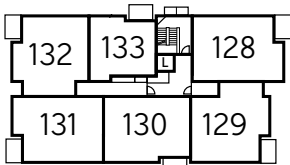


The Stamford – Plot 127

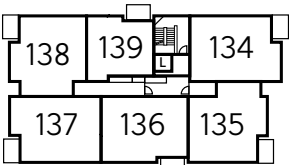
Kitchen/Living/Dining	5.56m x 5.08m	18'2" x 16'7"
Bedroom 1	5.08m x 3.50m	16'7" x 11'5"
En Suite to Bedroom 1	2.15m x 1.65m	7'1" x 5'4"
Bedroom 2	3.79m x 3.20m	12'4" x 10'5"
Bathroom	2.15m x 2.00m	7'1" x 6'6"
Utility	1.80m x 0.85m	5'4" x 2'8"
<b>Total area</b>	<b>50.0 sq. m.</b>	<b>538 sq. ft.</b>



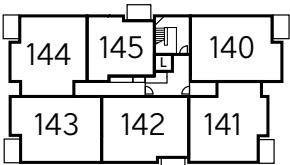
Ground Floor



First Floor



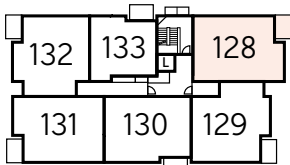
Second Floor



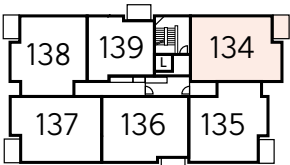
Third Floor



Ground Floor



First Floor



Second Floor



Third Floor

WS - Wardrobe Space (suggestion only, wardrobe not included)

Furniture arrangements are for illustrative purposes only. Items are not included, nor to scale.

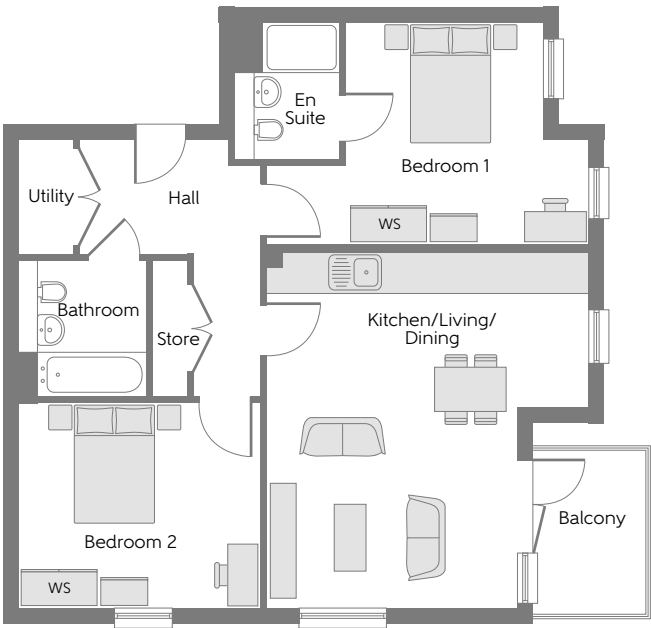
The items shown in this key may be subject to change, and positions could vary from those indicated on this floorplan. Please refer to Sales Advisor for details of your selected plot. External finishes and landscaping may vary. Please refer to Sales Advisor for further details. All dimensions are approximate and should not be used for carpet sizes, appliance spaces or furniture. We operate a policy of continuous improvement and individual features such as kitchen and bathroom layouts, doors, windows, garages and elevational treatments may vary from time to time. Consequently these particulars should be treated as general guidance only and do not constitute a contract, part of a contract or a warranty.

WS - Wardrobe Space (suggestion only, wardrobe not included)

Furniture arrangements are for illustrative purposes only. Items are not included, nor to scale.

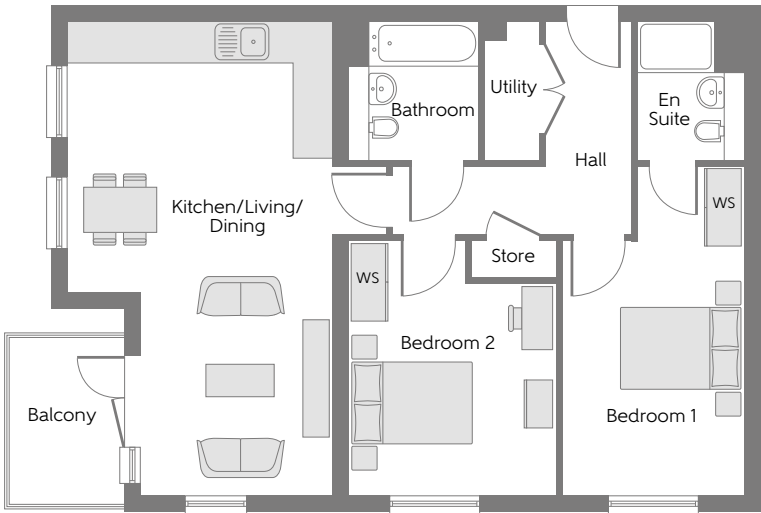
The items shown in this key may be subject to change, and positions could vary from those indicated on this floorplan. Please refer to Sales Advisor for details of your selected plot. External finishes and landscaping may vary. Please refer to Sales Advisor for further details. All dimensions are approximate and should not be used for carpet sizes, appliance spaces or furniture. We operate a policy of continuous improvement and individual features such as kitchen and bathroom layouts, doors, windows, garages and elevational treatments may vary from time to time. Consequently these particulars should be treated as general guidance only and do not constitute a contract, part of a contract or a warranty.





The Ludlow – Plots 130, 136 & 142

Kitchen/Living/Dining	6.85m x 3.46m	22'5" x 11'3"
Bedroom 1	5.16m x 2.80m	16'9" x 9'2"
Ensuite to Bedroom 1	2.15m x 1.65m	7'1" x 5'4"
Bedroom 2	4.01m x 3.37m	13'2" x 11'1"
Bathroom	2.15m x 2.00m	7'1" x 6'6"
Utility	2.15m x 1.03m	7'1" x 3'4"
Total area	70.82 sq. m.	762 sq. ft.

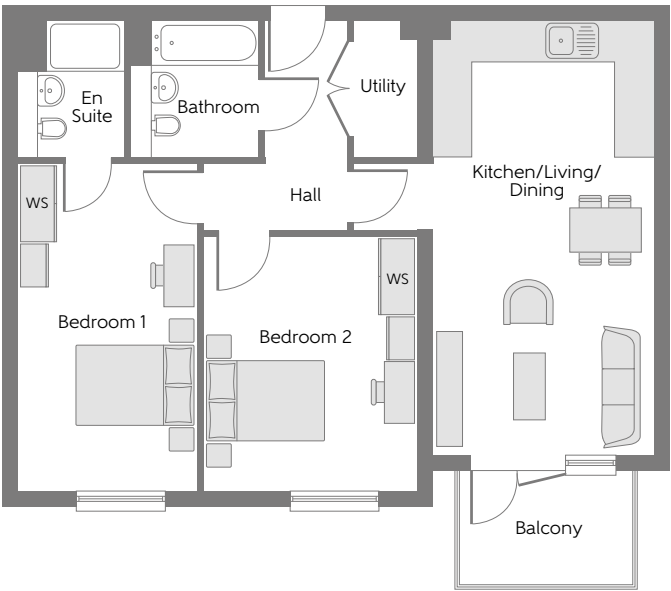


The Caxton – Plots 131, 137 & 143

Kitchen/Living/Dining	7.41m x 4.22m	24'3" x 13'9"
Bedroom 1	5.16m x 2.79m	16'9" x 9'2"
En Suite to Bedroom 1	2.15m x 1.65m	7'1" x 5'4"
Bedroom 2	4.01m x 3.20m	13'2" x 10'5"
Bathroom	2.15m x 2.00m	7'1" x 6'6"
Utility	2.15m x 0.85m	7'1" x 2'8"
Total area	71.22 sq. m.	767 sq. ft.

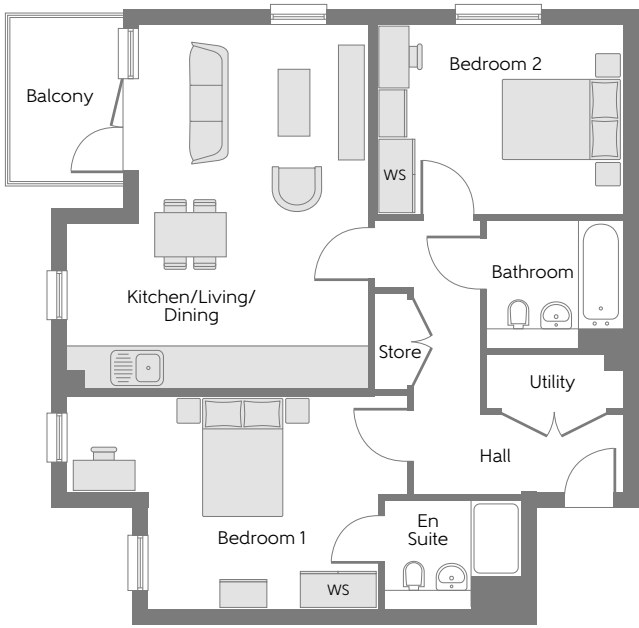
The Shipston – Plot 129

Kitchen/Living/Dining	5.60m x 5.08m	18'4" x 16'7"
Bedroom 1	5.08m x 3.50m	16'7" x 11'5"
En Suite to Bedroom 1	2.15m x 1.65m	7'1" x 5'4"
Bedroom 2	3.79m x 3.22m	12'4" x 10'6"
Bathroom	2.15m x 2.00m	7'1" x 6'6"
Utility	1.80m x 0.85m	5'9" x 2'8"
Total area	70.43 sq. m.	758 sq. ft.



The Tetbury – Plot 132

Kitchen/Living/Dining	5.75m x 3.63m	18'8" x 11'9"
Bedroom 1	5.36m x 3.35m	17'6" x 11'0"
En Suite to Bedroom 1	2.15m x 1.71m	7'1" x 5'6"
Bedroom 2	3.90m x 3.00m	12'8" x 9'8"
Bathroom	2.15m x 2.00m	7'1" x 6'6"
Utility	2.14m x 0.85m	7'1" x 2'8"
Total area	71.14 sq. m.	766 sq. ft.



Ground Floor



First Floor



Second Floor



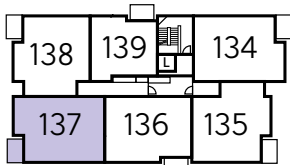
Third Floor



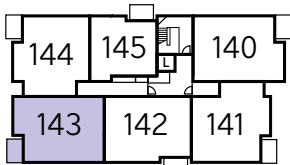
Ground Floor



First Floor



Second Floor



Third Floor

WS - Wardrobe Space (suggestion only, wardrobe not included)

Furniture arrangements are for illustrative purposes only. Items are not included, nor to scale.

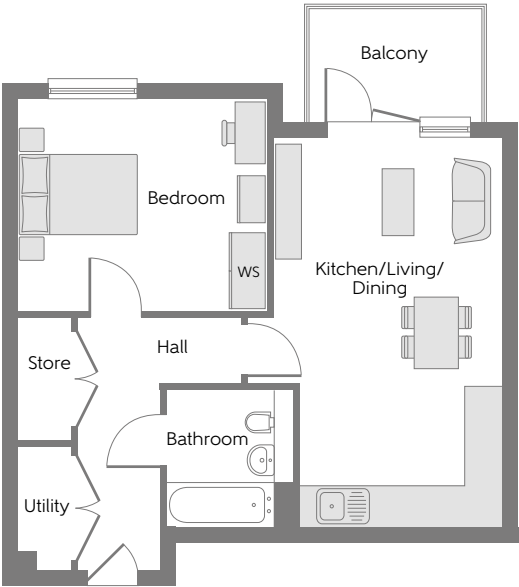
The items shown in this key may be subject to change, and positions could vary from those indicated on this floorplan. Please refer to Sales Advisor for details of your selected plot. External finishes and landscaping may vary. Please refer to Sales Advisor for further details. All dimensions are approximate and should not be used for carpet sizes, appliance spaces or furniture. We operate a policy of continuous improvement and individual features such as kitchen and bathroom layouts, doors, windows, garages and elevational treatments may vary from time to time. Consequently these particulars should be treated as general guidance only and do not constitute a contract, part of a contract or a warranty.

WS - Wardrobe Space (suggestion only, wardrobe not included)

Furniture arrangements are for illustrative purposes only. Items are not included, nor to scale.

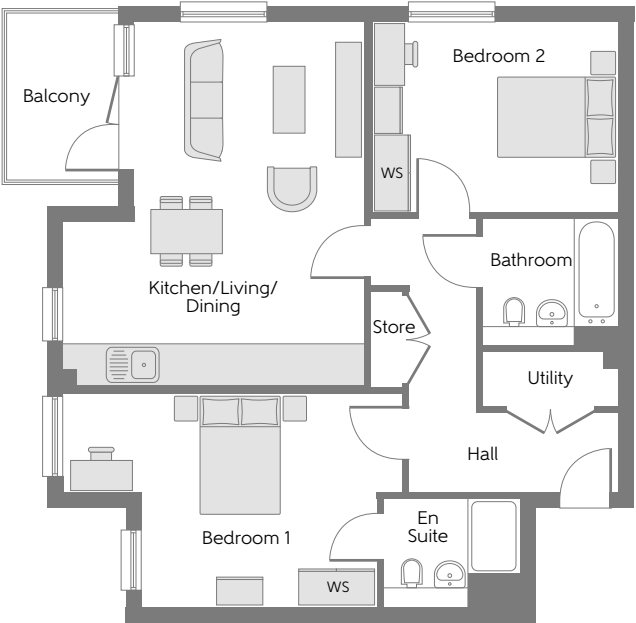
The items shown in this key may be subject to change, and positions could vary from those indicated on this floorplan. Please refer to Sales Advisor for details of your selected plot. External finishes and landscaping may vary. Please refer to Sales Advisor for further details. All dimensions are approximate and should not be used for carpet sizes, appliance spaces or furniture. We operate a policy of continuous improvement and individual features such as kitchen and bathroom layouts, doors, windows, garages and elevational treatments may vary from time to time. Consequently these particulars should be treated as general guidance only and do not constitute a contract, part of a contract or a warranty.





The Chepstow – Plot 133

Kitchen/Living/Dining	6.14m x 3.62m	20'1" x 11'9"
Bedroom	3.93m x 3.34m	12'9" x 10'9"
Bathroom	2.15m x 2.00m	7'1" x 6'6"
Utility	1.94m x 0.85m	6'4" x 2'8"
<b>Total area</b>	<b>50.11 sq. m.</b>	<b>539 sq. ft.</b>

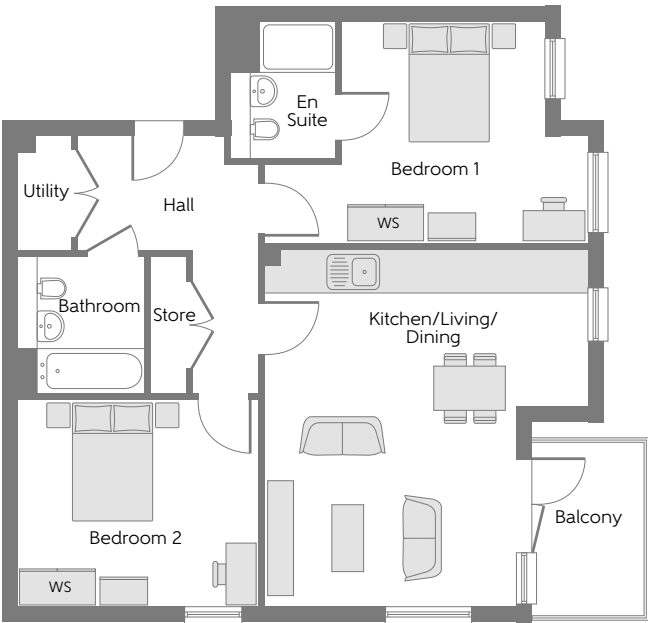


The Sudbury – Plots 138 & 144

Kitchen/Living/Dining	5.73m x 4.75m	18'8" x 15'6"
Bedroom 1	5.36m x 3.37m	17'6" x 11'1"
En Suite to Bedroom 1	2.15m x 1.70m	7'1" x 5'6"
Bedroom 2	3.89m x 3.00m	12'8" x 9'8"
Bathroom	2.15m x 2.00m	7'1" x 6'6"
Utility	2.15m x 0.85m	7'1" x 2'8"
<b>Total area</b>	<b>71.27sq. m.</b>	<b>767 sq. ft.</b>

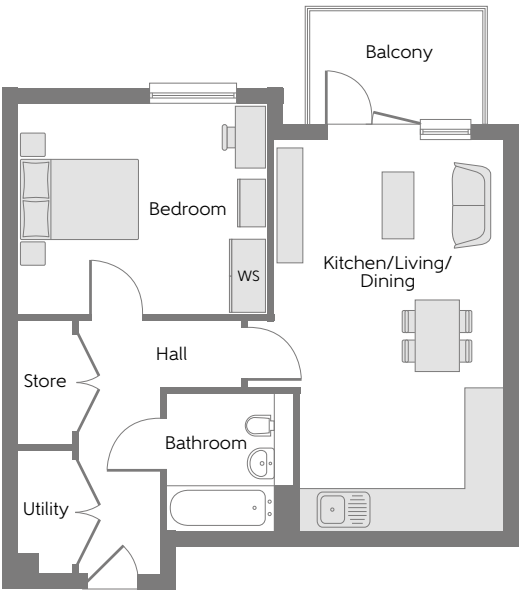
The Selby – Plots 135 & 141

Kitchen/Living/Dining	5.60m x 5.08m	18'4" x 16'7"
Bedroom 1	5.08m x 3.50m	16'7" x 11'5"
En Suite to Bedroom 1	2.15m x 1.65m	7'1" x 5'4"
Bedroom 2	3.79m x 3.26m	12'4" x 10'7"
Bathroom	2.15m x 2.00m	7'1" x 6'6"
Utility	1.80m x 0.85m	5'4" x 2'8"
<b>Total area</b>	<b>71.10 sq. m.</b>	<b>765 sq. ft.</b>

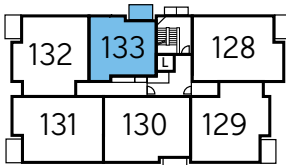


The Charley – Plots 139 & 145

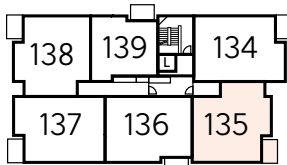
Kitchen/Living/Dining	6.18m x 3.62m	6'2" x 11'9"
Bedroom	3.93m x 3.34m	12'9" x 10'9"
Bathroom	2.15m x 2.00m	7'1" x 6'6"
Utility	1.94m x 0.85m	6'4" x 2'8"
<b>Total area</b>	<b>50.20 sq. m.</b>	<b>540 sq. ft.</b>



Ground Floor



First Floor



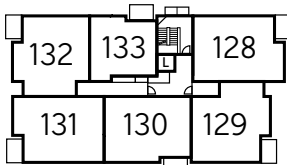
Second Floor



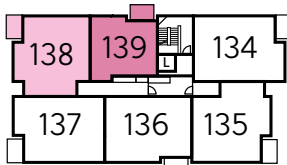
Third Floor



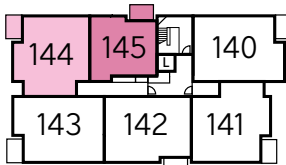
Ground Floor



First Floor



Second Floor



Third Floor

WS - Wardrobe Space (suggestion only, wardrobe not included)

Furniture arrangements are for illustrative purposes only. Items are not included, nor to scale.

The items shown in this key may be subject to change, and positions could vary from those indicated on this floorplan. Please refer to Sales Advisor for details of your selected plot. External finishes and landscaping may vary. Please refer to Sales Advisor for further details. All dimensions are approximate and should not be used for carpet sizes, appliance spaces or furniture. We operate a policy of continuous improvement and individual features such as kitchen and bathroom layouts, doors, windows, garages and elevational treatments may vary from time to time. Consequently these particulars should be treated as general guidance only and do not constitute a contract, part of a contract or a warranty.

WS - Wardrobe Space (suggestion only, wardrobe not included)

Furniture arrangements are for illustrative purposes only. Items are not included, nor to scale.

The items shown in this key may be subject to change, and positions could vary from those indicated on this floorplan. Please refer to Sales Advisor for details of your selected plot. External finishes and landscaping may vary. Please refer to Sales Advisor for further details. All dimensions are approximate and should not be used for carpet sizes, appliance spaces or furniture. We operate a policy of continuous improvement and individual features such as kitchen and bathroom layouts, doors, windows, garages and elevational treatments may vary from time to time. Consequently these particulars should be treated as general guidance only and do not constitute a contract, part of a contract or a warranty.



Houses Specification

3 Bedroom Homes			
FINISHES	Entrance Doors	GRP Insulated Door	●
	Loft Hatch	Loft Hatch - Hinged Drop Down   **   ††	●
	Ceilings	Crown White Matt Emulsion	●
	Walls	Crown White Matt Emulsion	●
	Floors	Concrete Ground Floor / Chipboard First Floor	●
	Window Cills	White Satin MDF	●
	Stairs	Timber Stair - White Satin MDF Strings	●
	Balusters	White Satin Stop Chamfered Balusters	●
	Newel Posts	White Satin Stop Chamfered Newels	●
	Newel Caps	White Satin Flat Top Newel Caps	●
	Handrail	White Satin Heavy Duty Handrail	●
	Skirting	White Satin 94x14 MDF Grooved & Chamfered	●
	Architrave	White Satin 69x18 MDF Grooved & Chamfered	●
	Internal Doors	White Pre Finished Vertical Panel Internal Doors	●
	Ironmongery	Chrome SR100 Door Furniture	●
KITCHEN	Carcass	Premium Grade 18mm thk Colour Matched Carcass	●
	Frontals	Bellway Band B options   ~ ~ ~	●
	Units	Frontal Matching Table Ends	●
	Worktops	40mm Square Edge Worktops with upstand	●
	Kitchen Sink	Leisure Eaton Bowl & Half SS Sink & Aquapace Tap (inc Sink Liner)	●
	Utility Sink	Leisure Eaton Single Bowl SS Sink & Aquapace Tap (inc Sink Liner)	●
	Appliances Oven	Electrolux Single Oven KOFGH00BX	●
	Appliances Hob	Electrolux 4 Burner Ceramic Hob EHF6140ISK & SS Splashback	●
	Appliances Extractor	Cooker Hood Extractor LFC316X (recirculating)	●
	Appliances Fridge Freezer	Fridge Freezer Space Only	●
WET ROOMS	Appliance Dishwasher	Removeable Unit (inc Feed & Waste)   ‡	●
	Appliance Washing Machine	Washing Machine Space Only (inc Feed & Waste)	●
	Cloaks - WC	Roca DEBBA WC with Concealed Cistern & PL2 Flush Plate   ^^^	●
	Cloaks - Basin	Roca Wash Hand Basin   ^	●
	Cloaks - Brassware	Bristan PISA Small Basin Chrome Mixer Tap	●
	Cloaks - Tiling	Band 2 Tiling to WC Boxing, Splashback Tiling to WHB, Flat Edge Chrome Trim	●
	Bathroom - WC	Roca DEBBA WC with Concealed Cistern & PL2 Flush Plate   ^^^	●
	Bathroom - Basin	Roca DEBBA 500 WHB with Full Pedestal   ~~	●
	Bathroom - Bath	Roca OSLO Acrylic Bath & Rigid Bath Panel	●
	Bathroom - Brassware	Bristan PISA Chrome Bath & Basin Mixer Taps	●
	Bathroom - Shower Tray	Mira FLIGHT Low Shower Tray with Mira ELEVATE Enclosure   ^	●
	Bathroom - Tiling	1/2 Height Tiling (Band 2) to Wet Walls with Flat Edged Chrome Trim   ***   †††	●

3 Bedroom Homes			
WET ROOMS	En-Suite - WC	Roca DEBBA WC with Concealed Cistern & PL2 Flush Plate   ^^^	●
	En-Suite - Basin	Roca DEBBA 450 WHB with Full Pedestal	●
	En-Suite - Brassware	Bristan PISA Chrome Bath & Basin Mixer Taps	●
	En-Suite - Shower Tray	Mira FLIGHT Low Shower Tray with Mira ELEVATE Enclosure   ^	●
	En-Suite - Shower	Mira MINIMAL Single Thermostatic Shower   ‡‡‡	●
MECHANICAL	En-Suite - Tiling	1/2 Height Tiling (Band 2) to Wet Walls with Flat Edged Chrome Trim   †††	●
	Hot Water	Air Source Heat Pump & Cylinder	●
	Radiators	Stelrad Compact Steel Panel Radiators with Grilles	●
ELECTRICS	Ventilation	Window Trickle Ventilators with Mechanical Extract Fans (system 3) dMEV	●
	Safety - Heat	Heat Detector DET   #	●
	Safety - Fire	Optical Smoke Detectors LD2 D2 DET	●
	Consumer Unit	Wylex Consumer Unit	●
	Sockets & Switches	Electrium CASA White Fittings	●
	Lighting	Pendant Fitting to Habitable Rooms	●
	Lighting - Kitchen	White Recessed Spot Lights	●
	Lighting - Bathroom & En-Suites	White Recessed Spot Lights	●
	Lighting - External	External Light Clifton Brushed Steel Up/Down (Front & Rear)	●
	Communications - TV	TV Point to Living Room & Bedroom 1	●
EXTERNALS & MISC	Communications - Data	Cat 6 Network Point to Living Room & Study	●
	Broadband	Ultrafast Fibre Connectivity (Openreach, Virgin Media, Hyperoptic)   ‡‡	●
	Build Method	Masonry   ###	●
	Ecological	Hedgehog Highway fencing adaption	●
	Number Plaque	Artisan Number Plaque	●
	Footpath & Patio	Buff Riven PCC Flags 450x450x32's	●
	Drives	Bitmac Black   ##	●
	Landscaping - Front	Medallion Turf & Landscape Planting   ~	●
	Landscaping - Rear	Rotovated Topsoil   ~	●
	EV Charging Terminal	Universal Socket 7kW   *   †	●

- \* refer site layout
- \*\* fire rated as necessary
- \*\*\* full height around bath where shower provided as standard
- † electrical infrastructure upgrade maybe required
- †† where layout allows
- ††† full height to shower enclosure
- ‡ at build stage
- ‡‡ consult with sales executive for specific development details
- ‡‡‡ flow regulator fitted to bath mixer if serving single thermostatic shower & fed via combination boiler
- ^ housetype dependent - liaise with sales executive
- ^^ housetype dependent on particular 4 bed housetypes - liaise with Sales Advisor
- ^^^ inc soft close mechanism seat on 4 & 5 Bedroom Homes ONLY
- # kitchen only
- ## plot dependent
- ### plot specific, refer site layout
- ~ refer site landscape layout
- ~~ semi recessed basin if AD M4(ii) applicable
- ~~~ soft close mechanism to doors & drawers

Apartments Specification

FINISHES		1 Bedroom Apartments	2 Bedroom Apartments
Entrance Doors	Apartment Entrance Door White Gloss Fire Rated Solid Core	●	●
Ceilings	Crown White Matt Emulsion	●	●
Walls	Crown White Matt Emulsion	●	●
Window Cills	White Satin MDF	●	●
Skirting	White Satin 94x14 MDF Grooved & Chamfered	●	●
Architrave	White Satin 69x18 MDF Grooved & Chamfered	●	●
Internal Doors	White Pre Finished Vertical Panel Internal Doors	●	●
Ironmongery	Chrome SR100 Door Furniture	●	●
KITCHEN			
Carcass	Premium Grade 18mm thk Colour Matched Carcass	●	●
Frontals	Bellway Band B options   #	●	●
Units	Frontal Matching Table Ends	●	●
Worktops	40mm Square Edge Worktops with upstand	●	●
Kitchen Sink	Leisure Linear Bowl & Half SS Sink & TCAF3 Tap (inc Sink Liner)	●	●
Appliances Oven	Electrolux Single Oven KOFGH00BX	●	●
Appliances Hob	Electrolux 4 Burner Ceramic Hob EHF6140ISK & SS Splashback	●	●
Appliances Extractor	Cooker Hood Extractor LFC316X	●	●
Appliances Fridge Freezer	Fridge Freezer Space Only	●	●
Appliance Dishwasher	Removeable Unit (inc Feed & Waste)   **	●	●
Appliance Washing Machine	Washing Machine Space within A/C (inc Feed & Waste)	●	●
WET ROOMS			
Bathroom - Storage	Recessed Storage Shelving	●	●
Bathroom - WC	Roca DEBBA WC with Concealed Cistern & PL1 Flush Plate   ‡‡	●	●
Bathroom - Basin	Roca DEBBA 500 WHB with Full Pedestal   ^^^	●	●
Bathroom - Bath	Roca OSLO Acrylic Bath & Rigid Bath Panel	●	●
Bathroom - Brassware	Bristan PISA Chrome Bath & Basin Mixer Taps	●	●
Bathroom - Shower	Over Bath Mira MINIMAL Single Thermostatic Shower   ‡	●	
Bathroom - Tiling	1/2 Height Tiling (Band 2) to Wet Walls with Flat Edged Chrome Trim   *   †	●	●
En-Suite - WC	Roca DEBBA WC with Concealed Cistern & PL1 Flush Plate   ‡‡		●
En-Suite - Basin	Roca DEBBA 450 WHB with Full Pedestal		●
En-Suite - Brassware	Bristan PISA Chrome Basin Mixer Taps		●
En-Suite - Shower Tray	Mira FLIGHT Low Shower Tray with Mira ELEVATE Enclosure   ††		●
En-Suite - Shower	Mira MINIMAL Single Thermostatic Shower   ***		●
En-Suite - Tiling	1/2 Height Tiling (Band 2) to Wet Walls with Flat Edged Chrome Trim   †		●

MECHANICAL		1 Bedroom Apartments	2 Bedroom Apartments
Hot Water	Hot Water Heat Pump Cylinder	●	●
Controls	Heaters individually controlled	●	●
Radiators	Electric Panel Heaters	●	●
Towel Warmers	Flat Chrome to Bathroom	●	●
Ventilation	Window Trickle Vents with Mechanical Extract Fans (System 3) MEV   ##	●	●
ELECTRICS			
Safety - Heat	Heat Detector DET   ‡‡‡	●	●
Communications - Access	Audio Entry System	●	●
Home Working	Dedicated Power, USB & Data Points	●	●
Safety - Fire	Optical Smoke Detectors LD2 D2 DET	●	●
Consumer Unit	Wylex Consumer Unit	●	●
Sockets & Switches	Electrium CASA White Fittings	●	●
USB Locations	Kitchen, Living Room & Bedroom 1 ONLY	●	●
Shaver / Toothbrush Point	Bathroom ONLY	●	●
Lighting	Pendant Fitting to Habitable Rooms	●	●
Lighting - Kitchen	White Recessed Spot Lights	●	●
Lighting - Bathroom & En-Suites	White Recessed Spot Lights	●	●
Communications - TV	TV Point to Living Room & Bedroom 1	●	●
Communications - Voice	Telephone Point to Living Room	●	●
Communications - Data	Cat 6 Network Point to Living Room & Bedroom 1	●	●
Communications - Satellite	Dual Connection Satellite Points to Living Room	●	●
Broadband	Ultrafast Fibre Connectivity Openreach	●	●
EXTERNALS & MISC			
Shared Parking Areas	Bitmac Black   ^	●	●
Balcony	Balcony   ###	●	●
Build Method	Masonry   ^^	●	●

\* full height around bath where shower provided as standard

\*\* at build stage

\*\*\* flow regulator fitted to bath mixer if serving single thermostatic shower & fed via combination boiler

† full height to shower enclosure

†† housetype dependent - liaise with sales executive

††† housetype dependent on particular 4 bed housetypes - liaise with Sales Advisor

‡ inc MIRA bath screen 1.1863.004

‡‡ inc soft close mechanism seat on 4 & 5 Bedroom Homes ONLY

‡‡‡ kitchen only

^ plot dependent

^^ plot specific, refer site layout

^^^ semi recessed basin if AD M4(ii) applicable

# soft close mechanism to doors & drawers

## System 4 ventilation in lieu of System 3 for specific plots - liaise with sales executive

### where shown on layouts



Communal Areas Specification

FINISHES		Communal Areas
Mat Wells	Needle Punch Matting	•
Entrance Doors	GRP Insulated Door	•
Mail Box	Recessed Wall Mounted 300x100x380 Internal	•
Information Board	Building Information Board	•
Safety Signage	Safety Signage	•
Loft Hatch	Loft Hatch - Hinged Drop Down (lockable) ** ††	•
Ceilings	Crown White Matt Emulsion GTQ41 ‡	•
Walls	Crown White Matt Emulsion	•
Floors	Carpeted Lobbies & Carpeted Corridors Band 1	•
Window Cills	White Satin MDF	•
Stairs	Concrete Stairs - White Gloss MDF Strings	•
Balusters	Wrought Iron Balustrade - White Gloss	•
Newel Posts	Wrought Iron Newel - Box Section - White Gloss	•
Handrail	Moulded Plastic Handrail - Black	•
Skirting	White Satin 94x14 MDF Grooved & Chamfered	•
Architrave	White Satin 69x18 MDF Grooved & Chamfered	•
Internal Doors	White Gloss Fire Rated Solid Core inc Vision Panel	•
Ironmongery	Chrome SR100 Door Furniture	•
MECHANICAL		
Radiators	Wiring & Blanking Plate for Tubular Heater (GF Lobby ONLY)	•
ELECTRICS		
Passenger Lift	Apartment Block dependent	•
Safety - Fire	Fire Alarm	•
Consumer Unit	Wylex Consumer Unit	•
Sockets & Switches	Lockable Sockets	•

EXTERNALS & MISC		Communal Areas
Refuse	Internal Refuse Store	•
Smoke Control	Smoke Control Fire Damper †††	•
Shared Parking Areas	Bitmac Black †††	•
Landscaping - Communal	Communal Landscape Planting & Medallion Turf ††	•
Dry Riser	Dry Riser †††	•
Cycle Store	Cycle Store (secured) internal or external *	•
Maintenance	Bib Tap to Binstore ***	•
Number Plaque	Artisan Number Plaque	•
Footpath & Patio	Buff Riven PCC Flags 450x450x32's	•
EV Charging Terminal	Pod Point 7kw Solo PAYG Universal * †	•

\* refer site layout  
\*\* fire rated as necessary  
\*\*\* Internal Binstores ONLY  
† electrical infrastructure upgrade maybe required  
†† where layout allows  
††† plot dependent  
‡ refer communal layouts for specifics  
‡‡ refer site landscape layout



## Dedicated to delivering quality

An enhanced specification is the hallmark of The Artisan Collection.

All of our homes are equipped with superior fixtures and fittings, which dovetails perfectly with our focus on design and attention to detail.

Expertly crafted using state-of-the-art materials, your brand new home is finished to a high standard so you can start enjoying it the moment you get your keys.

"The overall finish of the home is perfect – Bellway really pay attention to every detail. The team were amazing and supported us throughout the process."

**SAMI AND SARA,**  
HANWOOD PARK

## Homes to love, built with care

From the first day you visit our sales centre, to the day you move in and beyond, we aim to provide a level of service and after-sales care that is second to none.

A number of quality checks are carried out on each of our new homes through the construction process and on completion. Once your home has passed all of our quality checks, you will be invited to attend your Home Demonstration which will provide an opportunity for you to understand the various elements of your new home. On move in day, our site and sales teams will be there to ensure that everything goes as smoothly as possible.

Once you've settled into your new home, Bellway has experienced after-sales teams to provide support and assistance whenever you need it. Our homes come with a 10-year NHBC Buildmark policy, or an equivalent warranty from another provider. This includes deposit protection from exchange of contracts, a two-year builder warranty from legal completion, and then eight years of structural defects insurance cover.\*

We are confident that our approach to building and selling quality homes, coupled with our customer care processes, will provide you with many years of enjoyment in your new home.



\*For more details, visit the NHBC website at [www.nhbc.co.uk/homeowners](http://www.nhbc.co.uk/homeowners) and view the 'Welcome to NHBC warranty and insurance' brochure, or refer to the brochure of your alternative warranty provider.





# How to find us



# Bellway



Bellway abides by the New Homes Quality Code (NHQC), an independent industry code established to champion quality new homes and deliver better outcomes for customers.

