

The Alnwick

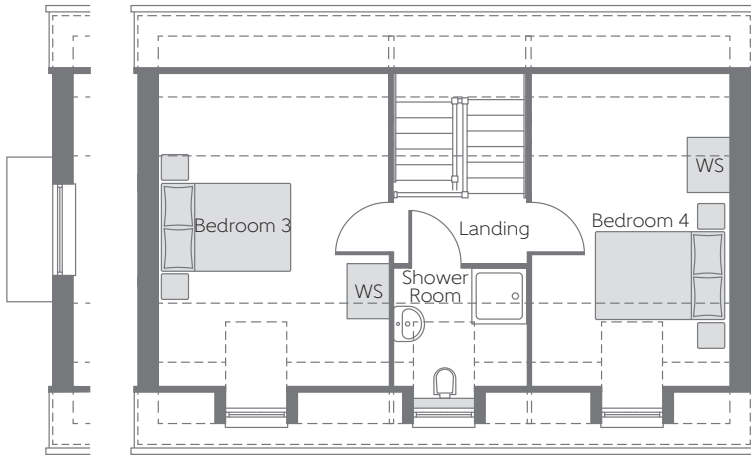
Four bedroom home



Bellway Homes Limited (Northern Home Counties)
Building 5, Caldecotte Lake Drive, Caldecotte,
Milton Keynes, Buckinghamshire MK7 8LE

Telephone: 01908 364 200
www.bellway.co.uk

Bellway



Second Floor

Bedroom 3	3.900m x 3.355m (max) (max)	12'10" x 11'0" (max) (max)
Bedroom 4	3.900m x 2.870m (max) (max)	12'10" x 9'5" (max) (max)

Plots 10 and 41 are handed.

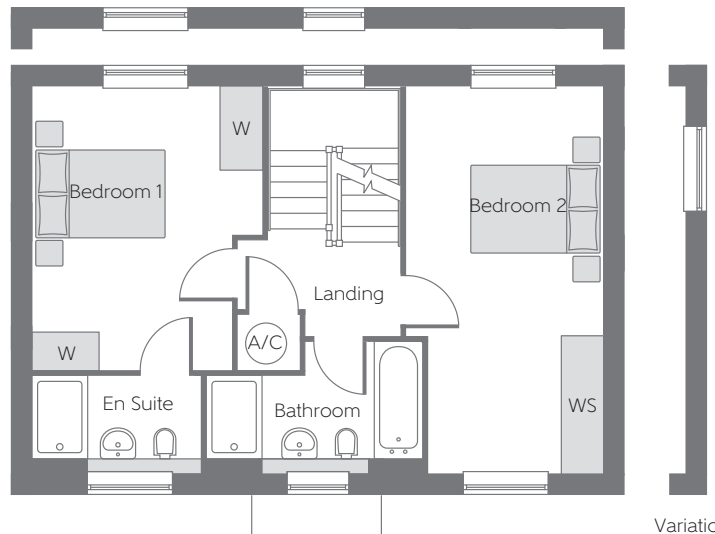
Variation to Plot 35 only.

Variation to Plots 35 and 41 only.

First Floor

Bedroom 1	4.130m x 3.355m (max) (max)	13'7" x 11'0" (max) (max)
Bedroom 2	5.650m x 2.870m (max) (max)	18'7" x 9'5" (max) (max)

Plots 10 and 41 are handed.

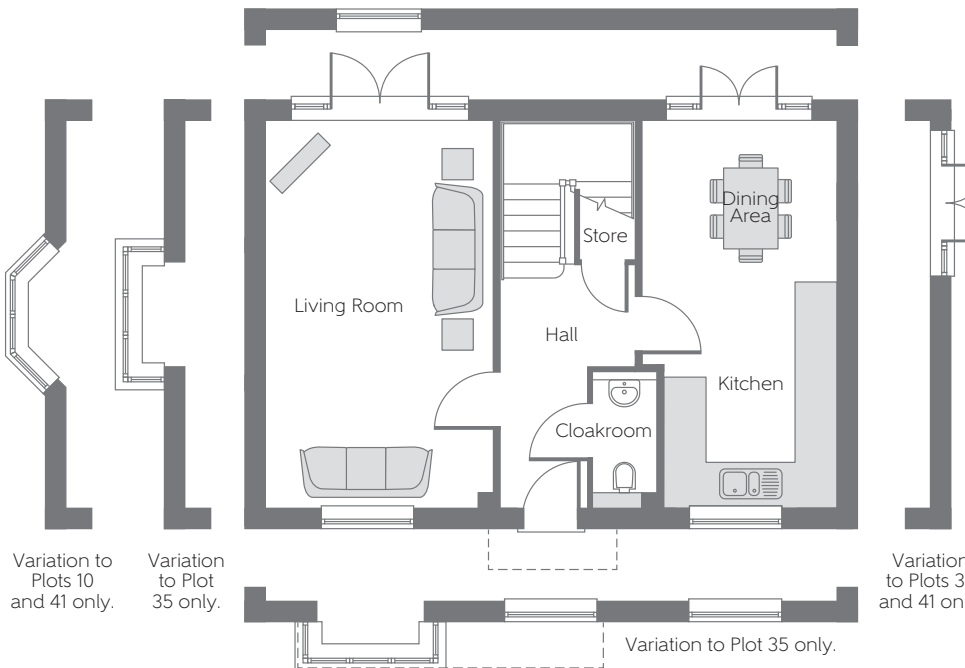


Variation to Plots 10 and 41 only. Variation to Plot 41 only. Variation to Plot 35 only.

Variation to Plots 35 and 41 only.

Variation to Plot 35 only.

Variation to Plots 35 and 41 only.



Ground Floor

Living Room	5.650m x 3.300m 18'7" x 10'10"
Kitchen	3.300m x 2.500m 10'10" x 8'3"
Dining Area	2.815m x 2.350m 9'3" x 7'9"

Plots 10 and 41 are handed.

Variation to Plots 10 and 41 only.

Variation to Plot 35 only.

Variation to Plots 35 and 41 only.

Variation to Plot 35 only.

A/C Airing Cupboard - - - Reduced Head Height WS Wardrobe Space (suggestion only, wardrobe not included) W Fitted Wardrobe

Some items shown in this key may be subject to change, and positions could vary from those indicated on this floorplan. Please refer to Sales Advisor for details of your selected plot. Computer generated image shown. External finishes, landscaping and configuration may vary from plot to plot. Please refer to Sales Advisor for exact details. All dimensions are approximate and should not be used for carpet sizes, appliance spaces, or furniture. Furniture not to scale and all positions are indicative. Wardrobes are shown to suggest position only, and are not included as standard unless otherwise stated. We operate a policy of continuous improvement and individual features such as kitchen and bathroom layouts, doors, windows, garages and elevational treatments may vary from time to time. Consequently these particulars should be treated as general guidance only and do not constitute a contract, part of a contract or a warranty. ALN/CC/300/D/01/A