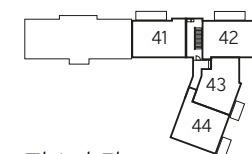
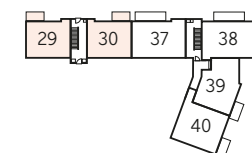


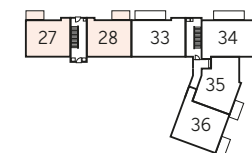
No balcony  
to plots 25  
& 26 only



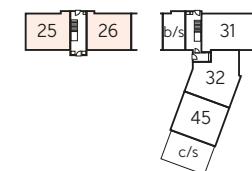
Third Floor



Second Floor



First Floor



Ground Floor

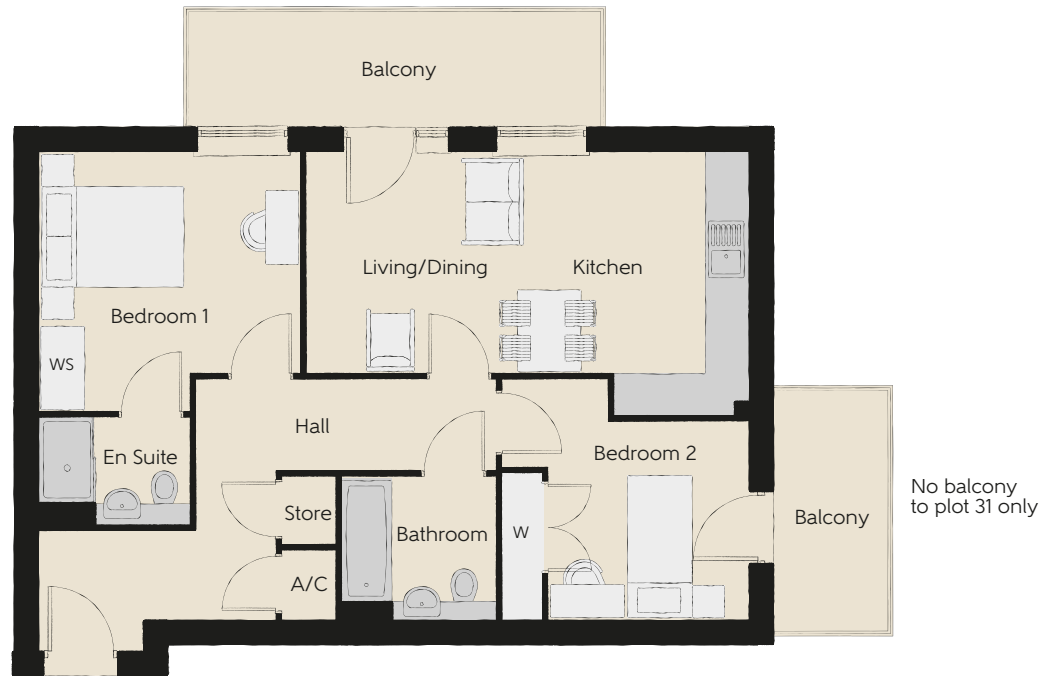
## Type 5 – Plots 25, 26, 27, 28, 29 & 30

Kitchen/Living/Dining	6.53m x 4.64m (max) (max)	21'5" x 15'3" (max) (max)
Bedroom	4.56m x 4.26m (max) (max)	14'10" x 14'0" (max) (max)
Bathroom	2.15m x 2.00m (max) (max)	7'1" x 6'7" (max) (max)

A/C – airing cupboard    W – Fitted Wardrobe    WS – Wardrobe Space (suggestion only, wardrobe not included)

**Furniture arrangements are for illustrative purposes only. Items are not included, nor to scale.**

The items shown in this key may be subject to change, and positions could vary from those indicated on this floorplan. Please refer to Sales Advisor for details of your selected plot. External finishes and landscaping may vary. Please refer to Sales Advisor for further details. All dimensions are approximate and should not be used for carpet sizes, appliance spaces or furniture. We operate a policy of continuous improvement and individual features such as kitchen and bathroom layouts, doors, windows, garages and elevational treatments may vary from time to time. Consequently these particulars should be treated as general guidance only and do not constitute a contract, part of a contract or a warranty.



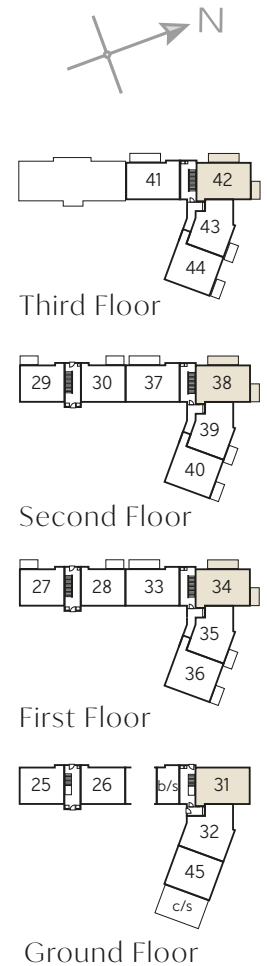
## Type 10 – Plots 31, 34, 38 & 42

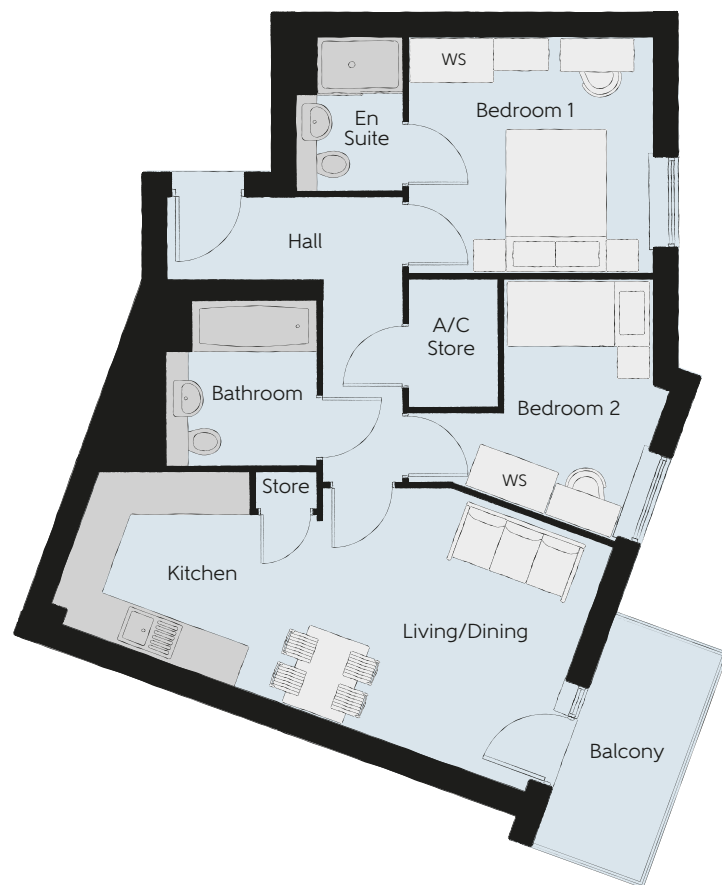
Kitchen/Living/Dining	6.17m x 3.70m (max) (max)	20'3" x 12'2" (max) (max)
Bedroom 1	3.46m x 3.35m (max) (max)	11'4" x 11'0" (max) (max)
Bedroom 1 En Suite	2.09m x 1.50m (max) (max)	6'10" x 4'11" (max) (max)
Bedroom 2	3.46m x 3.35m (max) (max)	11'4" x 11'0" (max) (max)
Bathroom	2.15m x 2.00m (max) (max)	7'1" x 6'7" (max) (max)

A/C – airing cupboard    W – Fitted Wardrobe    WS – Wardrobe Space (suggestion only, wardrobe not included)

**Furniture arrangements are for illustrative purposes only. Items are not included, nor to scale.**

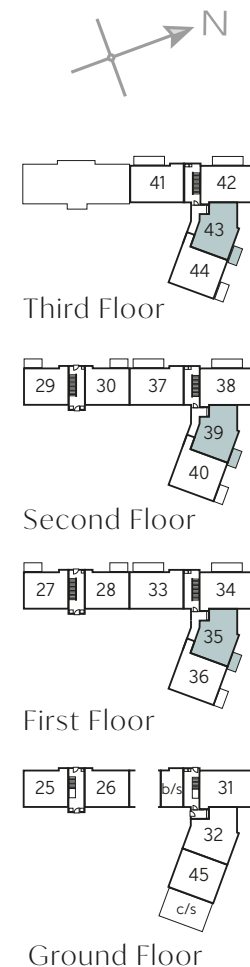
The items shown in this key may be subject to change, and positions could vary from those indicated on this floorplan. Please refer to Sales Advisor for details of your selected plot. External finishes and landscaping may vary. Please refer to Sales Advisor for further details. All dimensions are approximate and should not be used for carpet sizes, appliance spaces or furniture. We operate a policy of continuous improvement and individual features such as kitchen and bathroom layouts, doors, windows, garages and elevational treatments may vary from time to time. Consequently these particulars should be treated as general guidance only and do not constitute a contract, part of a contract or a warranty.





### Type 13 - Plots 35, 39 & 43

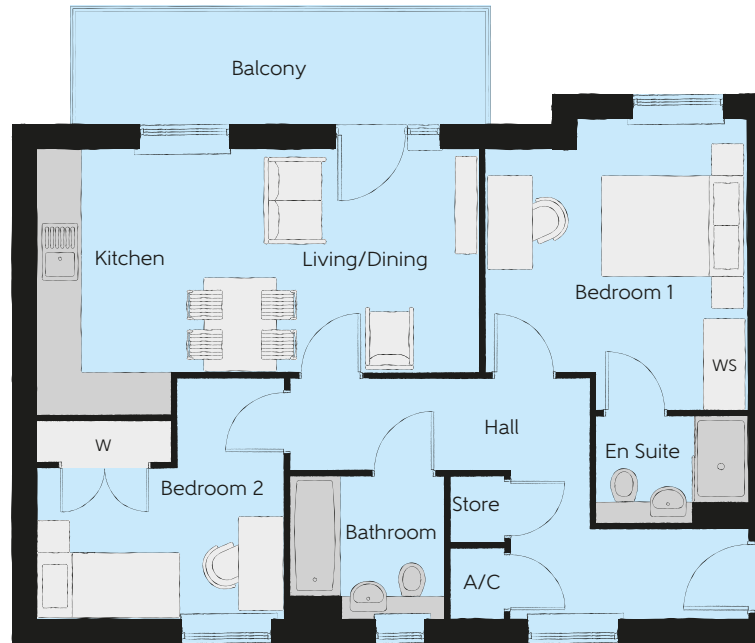
Kitchen/Living/Dining	7.09m x 3.64m (max) (max)	23'3" x 11'11" (max) (max)
Bedroom 1	3.35m x 3.41m (max) (max)	11'0" x 11'2" (max) (max)
Bedroom 1 En Suite	2.13m x 1.50m (max) (max)	7'0" x 4'11" (max) (max)
Bedroom 2	3.40m x 3.64m (max) (max)	11'2" x 12'0" (max) (max)
Bathroom	2.34m x 2.07m (max) (max)	7'8" x 6'10" (max) (max)



A/C - airing cupboard WS - Wardrobe Space (suggestion only, wardrobe not included)

**Furniture arrangements are for illustrative purposes only. Items are not included, nor to scale.**

The items shown in this key may be subject to change, and positions could vary from those indicated on this floorplan. Please refer to Sales Advisor for details of your selected plot. External finishes and landscaping may vary. Please refer to Sales Advisor for further details. All dimensions are approximate and should not be used for carpet sizes, appliance spaces or furniture. We operate a policy of continuous improvement and individual features such as kitchen and bathroom layouts, doors, windows, garages and elevational treatments may vary from time to time. Consequently these particulars should be treated as general guidance only and do not constitute a contract, part of a contract or a warranty.



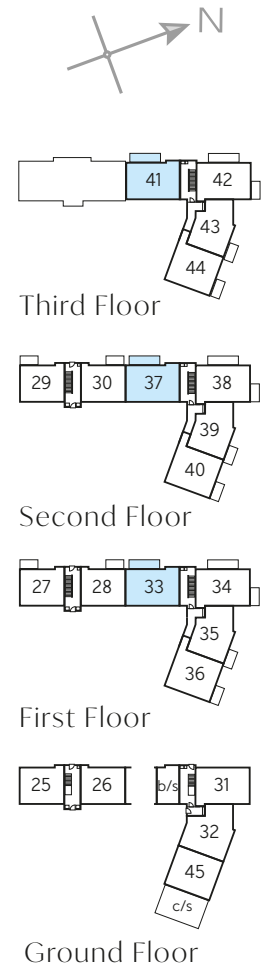
## Type 4 – Plots 33, 37 & 41

Kitchen/Living/Dining	6.15m x 3.70m (max) (max)	20'2" x 12' 2" (max) (max)
Bedroom 1	4.98m x 3.63m (max) (max)	16' 4" x 11' 11" (max) (max)
Bedroom 1 En Suite	2.10m x 1.42m (max) (max)	6'11" x 4'8" (max) (max)
Bedroom 2	3.35m x 3.44m (max) (max)	11'0" x 11'3" (max) (max)
Bathroom	2.15m x 2.00m (max) (max)	7'1" x 6'7" (max) (max)

A/C – airing cupboard    W – Fitted Wardrobe    WS – Wardrobe Space (suggestion only, wardrobe not included)

**Furniture arrangements are for illustrative purposes only. Items are not included, nor to scale.**

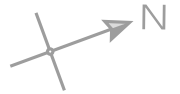
The items shown in this key may be subject to change, and positions could vary from those indicated on this floorplan. Please refer to Sales Advisor for details of your selected plot. External finishes and landscaping may vary. Please refer to Sales Advisor for further details. All dimensions are approximate and should not be used for carpet sizes, appliance spaces or furniture. We operate a policy of continuous improvement and individual features such as kitchen and bathroom layouts, doors, windows, garages and elevational treatments may vary from time to time. Consequently these particulars should be treated as general guidance only and do not constitute a contract, part of a contract or a warranty.



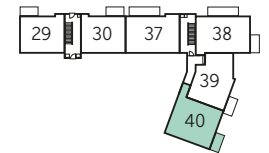


## Type 14 – Plots 36, 40 & 44

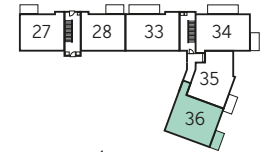
Kitchen/Living/Dining	6.30m x 3.94m (max) (max)	20'8" x 12'11" (max) (max)
Bedroom 1	4.16m x 3.41m (max) (max)	13'8" x 11'3" (max) (max)
Bedroom 2	4.11m x 2.27m (max) (max)	13'6" x 7'5" (max) (max)
Bathroom	2.02m x 2.00m (max) (max)	6'8" x 6'7" (max) (max)



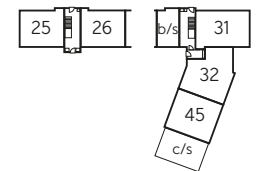
Third Floor



Second Floor



First Floor



Ground Floor

A/C – airing cupboard WS – Wardrobe Space (suggestion only, wardrobe not included)

**Furniture arrangements are for illustrative purposes only. Items are not included, nor to scale.**

The items shown in this key may be subject to change, and positions could vary from those indicated on this floorplan. Please refer to Sales Advisor for details of your selected plot. External finishes and landscaping may vary. Please refer to Sales Advisor for further details. All dimensions are approximate and should not be used for carpet sizes, appliance spaces or furniture. We operate a policy of continuous improvement and individual features such as kitchen and bathroom layouts, doors, windows, garages and elevational treatments may vary from time to time. Consequently these particulars should be treated as general guidance only and do not constitute a contract, part of a contract or a warranty.

## Type 12 – Plot 45

Kitchen/Living/Dining

8.57m x 3.64m  
(max) (max)

Bedroom

4.82m x 3.67m  
(max) (max)

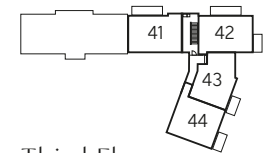
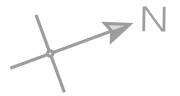
Bathroom

2.56m x 2.36m  
(max) (max)

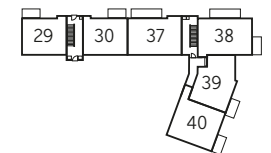
28'1" x 11'11"  
(max) (max)

15'10" x 12'1"  
(max) (max)

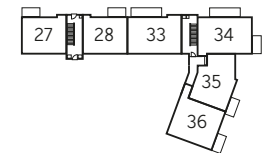
8'5" x 7'9"  
(max) (max)



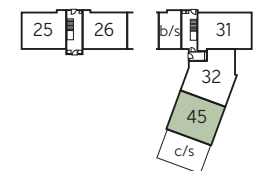
Third Floor



Second Floor



First Floor



Ground Floor

A/C – airing cupboard    WS – Wardrobe Space (suggestion only, wardrobe not included)

**Furniture arrangements are for illustrative purposes only. Items are not included, nor to scale.**

The items shown in this key may be subject to change, and positions could vary from those indicated on this floorplan. Please refer to Sales Advisor for details of your selected plot. External finishes and landscaping may vary. Please refer to Sales Advisor for further details. All dimensions are approximate and should not be used for carpet sizes, appliance spaces or furniture. We operate a policy of continuous improvement and individual features such as kitchen and bathroom layouts, doors, windows, garages and elevational treatments may vary from time to time. Consequently these particulars should be treated as general guidance only and do not constitute a contract, part of a contract or a warranty.



## Type 11 – Plot 32

Kitchen/Living/Dining

8.56m x 3.24m  
(max) (max)

28'1" x 10'8"  
(max) (max)

Bedroom 1

4.24m x 3.35m  
(max) (max)

13'11" x 11'10"  
(max) (max)

Bedroom 1 En Suite

2.13m x 1.50m  
(max) (max)

7'0" x 4'11"  
(max) (max)

Bedroom 2

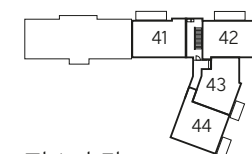
3.76m x 4.23m  
(max) (max)

12'4" x 13'11"  
(max) (max)

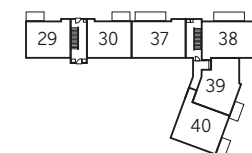
Bathroom

2.60m x 2.64m  
(max) (max)

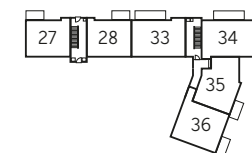
8'6" x 8'8"  
(max) (max)



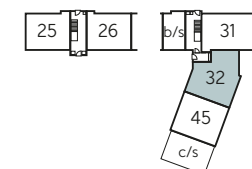
Third Floor



Second Floor



First Floor



Ground Floor

A/C – airing cupboard    WS – Wardrobe Space (suggestion only, wardrobe not included)

**Furniture arrangements are for illustrative purposes only. Items are not included, nor to scale.**

The items shown in this key may be subject to change, and positions could vary from those indicated on this floorplan. Please refer to Sales Advisor for details of your selected plot. External finishes and landscaping may vary. Please refer to Sales Advisor for further details. All dimensions are approximate and should not be used for carpet sizes, appliance spaces or furniture. We operate a policy of continuous improvement and individual features such as kitchen and bathroom layouts, doors, windows, garages and elevational treatments may vary from time to time. Consequently these particulars should be treated as general guidance only and do not constitute a contract, part of a contract or a warranty.