

Woodmansey Mile  
Beverley, Hull  
HU17 8NX

Telephone: 01482 904 969  
bellway.co.uk



Bellway abides by the New Homes Quality Code (NHQC), an independent industry code established to champion quality new homes and deliver better outcomes for customers.

**Bellway**



## Bishops Gate

DEVELOPMENT LAYOUT  
PHASE 2



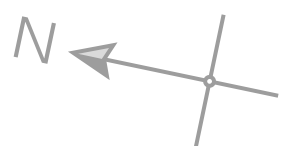
**Bellway**

Existing  
Development

Future proposed  
development

Existing  
Development

Ongoing Development



2 Bedroom Homes

 The Joiner  
Plots 89, 90, 100, 101 & 295

 The Woodcarver  
Plots 296 & 297

3 Bedroom Homes

 The Tailor  
Plots 60, 99, 268 & 269

 The Thespian  
Plots 33, 48, 58, 59, 98, 267 & 294

 The Turner  
Plots 30, 31, 87 & 88

 The Baxter  
Plots 29, 32, 41, 42, 51, 52, 54, 56, 57, 63, 64 & 84

 The Mason  
Plots 61, 71, 74, 96, 97 & 270

4 Bedroom Homes

 The Farrier  
Plots 55 & 104

 The Scrivener  
Plots 49, 50, 62, 65, 72, 73, 75 & 76

 The Cutler  
Plots 53, 83, 85, 86 & 105

 The Bowyer  
Plot 102

 The Forester  
Plots 103 & 106

2-3 Bedroom Homes

 Affordable Homes

 Shared Ownership Homes

Key to plan  
bcp Bin collection point

The site plan is drawn to show the relative position of individual properties. NOT TO SCALE. This is a two dimensional drawing and will not show land contours and gradients, boundary treatments, landscaping or local authority street lighting. Footpaths subject to change. For details of individual properties and availability please refer to our Sales Advisor.