



THE

CAUSEWAY

THREE BEDROOM HOME

PLOTS 52, 104, 136 & 155



Brought to you by

Bellway



LATIMER
by Clarion Housing Group



THE CAUSEWAY

THREE BEDROOM HOME
PLOTS 52, 104, 136 & 155

First floor

Kitchen/
Living/Dining Room

6.310m x 4.072m

20'8" x 13'4"

Bedroom 1

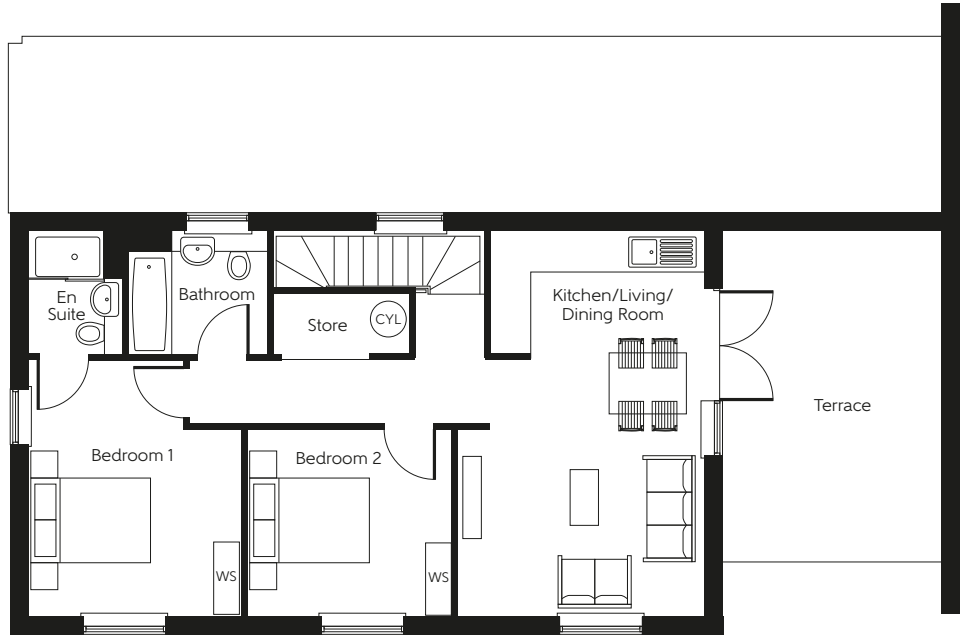
4.210m x 3.513m

13'10" x 11'6"

Bedroom 2

3.362m x 3.060m

11'0" x 10'0"



Ground floor

Study/Bedroom 3

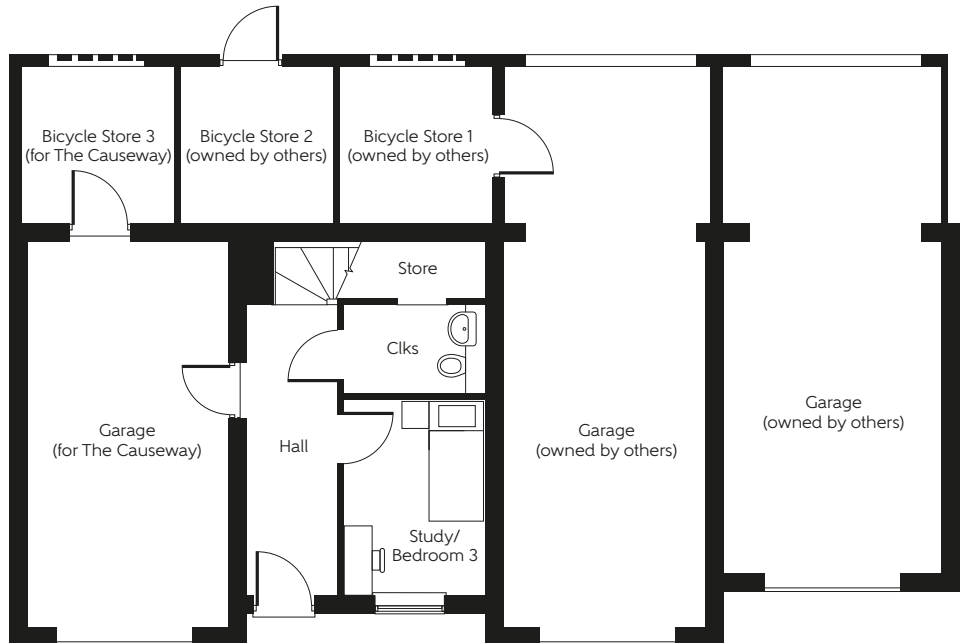
3.222m x 2.324m

10'7" x 7'7"

Total Area

93.0 sq.m.

1001 sq.ft.



Clks - Cloakroom (CYL) - Hot water Cylinder WS - Wardrobe Space (suggestion only, wardrobe not included)

Furniture arrangements are for illustrative purposes only. Items are not included, nor to scale.

The items shown in this key may be subject to change, and positions could vary from those indicated on this floorplan. Please refer to Sales Advisor for details of your selected plot. Computer generated image shown overleaf. External finishes, landscaping and configuration may vary from plot to plot. Please refer to Sales Advisor for further details. All dimensions are approximate and should not be used for carpet sizes, appliance spaces or furniture. We operate a policy of continuous improvement and individual features such as kitchen and bathroom layouts, doors, windows, garages and elevational treatments may vary from time to time. Consequently these particulars should be treated as general guidance only and do not constitute a contract, part of a contract or a warranty.

Brought to you by

Bellway

LATIMER
by Clarion Housing Group