

Woodmansey Mile
Beverley , Hull
HU17 8NX

Telephone: 01482 904 969
bellway.co.uk



Bellway abides by the New Homes Quality Code (NHQC), an independent industry code established to champion quality new homes and deliver better outcomes for customers.

Bellway



Bishops Gate

DEVELOPMENT LAYOUT
PHASE 2



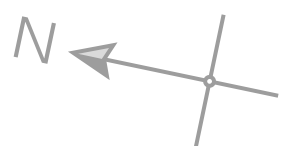
Bellway

Existing
Development

Future proposed
development

Existing
Development

Ongoing Development



2 Bedroom Homes

 The Joiner
Plots 89, 90, 100, 101 & 295

 The Woodcarver
Plots 296 & 297

3 Bedroom Homes

 The Tailor
Plots 60, 99, 268 & 269

 The Thespian
Plots 33, 48, 58, 59, 98, 267 & 294

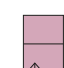
 The Turner
Plots 30, 31, 87 & 88

 The Baxter
Plots 29, 32, 41, 42, 51, 52, 54, 56,
57, 63, 64 & 84

 The Mason
Plots 61, 71, 74, 96, 97 & 270

4 Bedroom Homes

 The Farrier
Plots 55 & 104

 The Scrivener
Plots 49, 50, 62, 65, 72, 73, 75 & 76

 The Cutler
Plots 53, 83, 85, 86 & 105

 The Bowyer
Plot 102

 The Forester
Plots 103 & 106

2-3 Bedroom Homes

 Affordable Homes

 Shared Ownership Homes

Key to plan
bcp Bin collection point

The site plan is drawn to show the relative position of individual properties. NOT TO SCALE. This is a two dimensional drawing and will not show land contours and gradients, boundary treatments, landscaping or local authority street lighting. Footpaths subject to change. For details of individual properties and availability please refer to our Sales Advisor.