



THE

ARKWRIGHT

FOUR BEDROOM HOME
PLOTS 65 & 178



Brought to you by

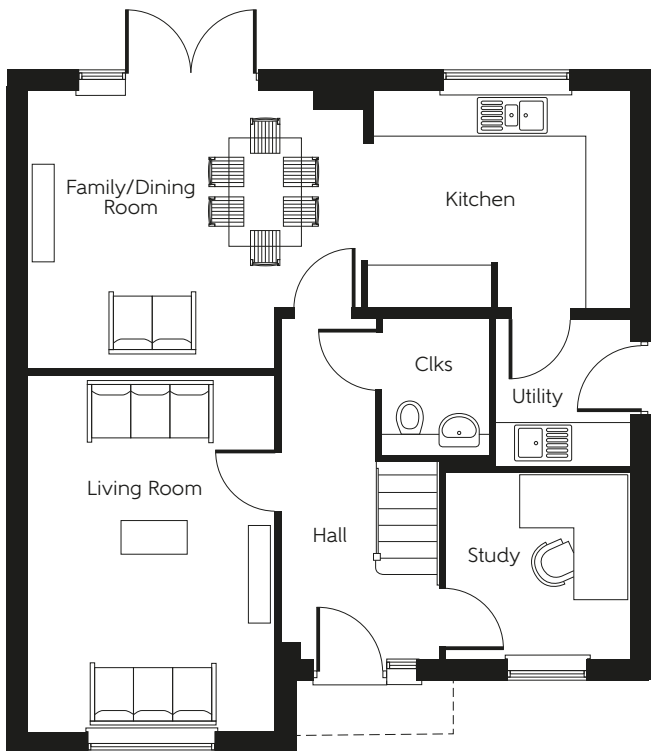
Bellway



LATIMER
by Clarion Housing Group

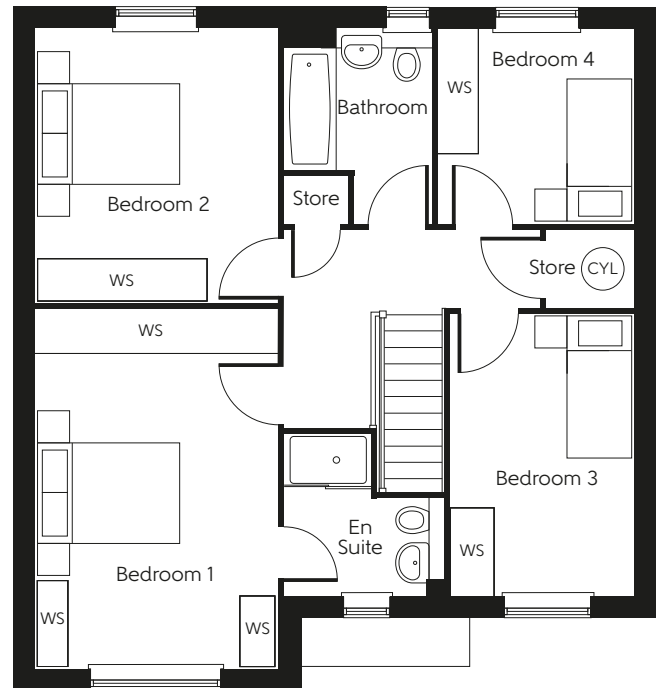
THE
ARKWRIGHT

FOUR BEDROOM HOME
PLOTS 65 & 178



Ground floor

Kitchen	3.550m x 3.000m	11'8" x 9'10"
Family/Dining Room	4.635m x 3.797m	15'2" x 12'5"
Living Room	4.950m x 3.385m	16'3" x 11'1"
Study	2.597m x 2.525m	8'6" x 8'3"



First floor

Bedroom 1	4.950m x 3.372m	16'3" x 11'1"
Bedroom 2	3.834m x 3.373m	12'7" x 11'1"
Bedroom 3	3.900m x 2.525m	12'10" x 8'3"
Bedroom 4	2.700m x 2.674m	8'10" x 8'9"

Total Area 139.2 sq.m. 1498 sq.ft.

Clks - Cloakroom (CYL) - Hot water Cylinder WS - Wardrobe Space (suggestion only, wardrobe not included)

Furniture arrangements are for illustrative purposes only. Items are not included, nor to scale.

The items shown in this key may be subject to change, and positions could vary from those indicated on this floorplan. Please refer to Sales Advisor for details of your selected plot. Computer generated image shown overleaf. External finishes, landscaping and configuration may vary from plot to plot. Please refer to Sales Advisor for further details. All dimensions are approximate and should not be used for carpet sizes, appliance spaces or furniture. We operate a policy of continuous improvement and individual features such as kitchen and bathroom layouts, doors, windows, garages and elevational treatments may vary from time to time. Consequently these particulars should be treated as general guidance only and do not constitute a contract, part of a contract or a warranty.

Brought to you by

Bellway

LATIMER
by Clarion Housing Group