



THE

FRAMER

THREE BEDROOM HOME

PLOTS 62, 67 & 179



Brought to you by

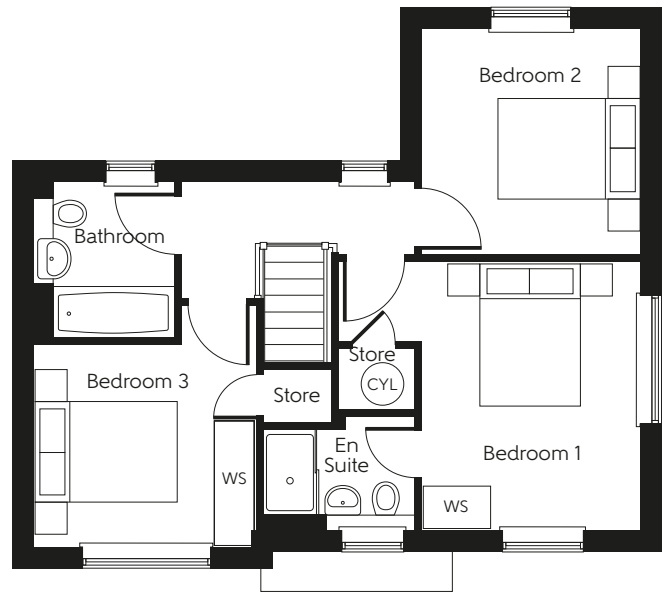
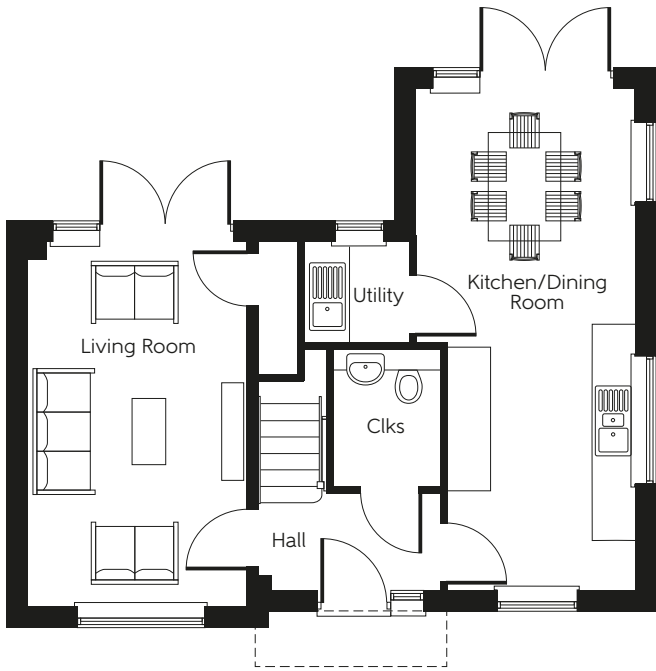


LATIMER
by Clarion Housing Group



THE FRAMER

THREE BEDROOM HOME
PLOTS 62, 67 & 179



Ground floor

Kitchen/Dining Room	7.085m x 3.048m	23'3" x 10'0"
Living Room	5.073m x 3.048m	16'8" x 10'0"

First floor

Bedroom 1	4.162m x 3.727m	13'8" x 12'3"
Bedroom 2	3.145m x 3.048m	10'4" x 10'0"
Bedroom 3	3.097m x 2.810m	10'2" x 9'3"

Total Area 97.2 sq.m. 1046 sq.ft.

Clks - Cloakroom (CYL) - Hot water Cylinder WS - Wardrobe Space (suggestion only, wardrobe not included)

Furniture arrangements are for illustrative purposes only. Items are not included, nor to scale.

The items shown in this key may be subject to change, and positions could vary from those indicated on this floorplan. Please refer to Sales Advisor for details of your selected plot. Computer generated image shown overleaf. External finishes, landscaping and configuration may vary from plot to plot. Please refer to Sales Advisor for further details. All dimensions are approximate and should not be used for carpet sizes, appliance spaces or furniture. We operate a policy of continuous improvement and individual features such as kitchen and bathroom layouts, doors, windows, garages and elevational treatments may vary from time to time. Consequently these particulars should be treated as general guidance only and do not constitute a contract, part of a contract or a warranty.

Brought to you by

