



Whitehouse Gardens

DEVELOPMENT LAYOUT



Bellway

Rambouillet Drive
Whitehouse, Milton Keynes
MK8 1GT

Telephone: 01908 086 814
bellway.co.uk



Over 75
YEARS of QUALITY
SINCE 1948



Bellway abides by the New Homes Quality Code (NHQC), an independent industry code established to champion quality new homes and deliver better outcomes for customers.

Bellway



Apartments

-  Bancroft Apartments
Plots 484, 485, 486, 487, 488, 489, 490 & 491
-  Neath Apartments
Plots 492, 493, 494, 495, 496, 497, 498 & 499
-  Brook Apartments
Plots 501, 502, 503, 504, 505 & 506
-  Whaddon Apartments
Plots 528, 529, 530, 531, 532, 533, 534, 535, 536, 537 & 538
-  Watling Apartments
Plots 546, 547, 548, 549, 550 & 551
-  Grange Apartments
Plots 558, 559, 560, 561, 562, 563, 552, 553, 554, 555, 556 & 557

2 Bedroom Homes

-  The Puxley
Plots 468, 469, 585, 586 & 587
-  The Elfield
Plots 478, 519 & 520
-  The Joiner
Plots 482, 483, 580, 581, 588 & 589
-  The Saddler
Plots 527 & 545

3 Bedroom Homes

-  The Chandler
Plots 457, 475, 480, 481 & 541
-  The Wolverton
Plots 463 & 470
-  The Lymner
Plots 464, 479 & 540
-  The Tenterer
Plots 472, 539 & 579
-  The Tanner
Plots 473 & 474
-  The Hornbeam
Plots 476 & 477

4 Bedroom Homes

-  The Alwick
Plots 453, 517, 518, 521, 522, 564, 565, 566 & 567
-  The Cherry
Plots 454 & 455
-  The Scrivener
Plots 456 & 591
-  The Denbigh
Plot 462
-  The Bowyer
Plots 471, 542 & 590
-  The Cartwright
Plots 513, 514, 525 & 526
-  The Wainwright
Plots 515, 516, 523, 524, 543 & 544

2-3 Bedroom Homes

-  Affordable Homes
-  Discount Market Value
Plots 462, 463, 468, 469, 470, 501, 502, 503, 504, 505, 506, 585, 586 & 587

Key to plan
 b/s Bin store
 c/s Cycle store
 v Visitor parking

Material Finishes
 (R) - Render Version
 (W) - Weatherboard Version

The site plan is drawn to show the relative position of individual properties. NOT TO SCALE. This is a two dimensional drawing and will not show land contours and gradients, boundary treatments, landscaping or local authority street lighting. Footpaths subject to change. For details of individual properties and availability please refer to our Sales Advisor.



The Tenterer

THREE BEDROOM HOME



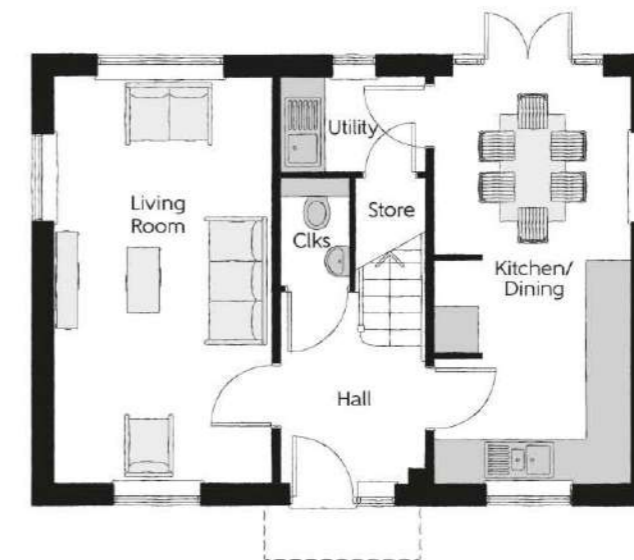
THE
ARTISAN
COLLECTION

Bellway



First Floor

Bedroom 1	4.07m x 2.77m	13'4" x 9'1"
Bedroom 1 En Suite	2.77m x 1.48m	9'1" x 4'10"
Bedroom 2	3.07m x 2.79m	10'1" x 9'2"
Bedroom 3	3.03m x 2.48m	9'11" x 8'2"
Bathroom	2.26m x 1.92m	7'5" x 6'4"



Ground Floor

Kitchen/Dining	5.64m x 2.71m	18'6" x 8'11"
Living Room	5.64m x 3.01m	18'6" x 9'10"
Utility	1.98m x 1.32m	6'6" x 4'4"
Cloakroom	1.65m x 0.95m	5'5" x 3'1"

Clks - Cloakroom WS - Wardrobe Space (suggestion only, wardrobe not included)

Furniture arrangements are for illustrative purposes only. Items are not included, nor to scale.

The items shown in this key may be subject to change, and positions could vary from those indicated on this floorplan. Please refer to Sales Advisor for details of your selected plot. Computer generated image shown overleaf. External finishes, landscaping and configuration may vary from plot to plot. Please refer to Sales Advisor for further details. All dimensions are approximate and should not be used for carpet sizes, appliance spaces or furniture. We operate a policy of continuous improvement and individual features such as kitchen and bathroom layouts, doors, windows, garages and elevational treatments may vary from time to time. Consequently these particulars should be treated as general guidance only and do not constitute a contract, part of a contract or a warranty. TE/CB/500/S00/D/01/B.



The Chandler

THREE BEDROOM HOME



THE
ARTISAN
COLLECTION

Bellway



First Floor

Bedroom 1	3.40m x 3.02m	11'2" x 9'11"
Bedroom 1 En Suite	2.44m x 1.19m	8'0" x 3'11"
Bedroom 2	3.50m x 3.40m (max)	11'6" x 11'2" (max)
Bedroom 3/Study	2.88m x 2.47m	11'2" x 8'1"
Bathroom	1.96m x 1.96m	6'5" x 6'5"



Ground Floor

Kitchen/Dining	5.46m x 3.05m	17'11" x 10'0"
Living Room	5.36m x 3.22m (inc. bay)	17'7" x 10'7" (inc. bay)
Cloakroom	1.92m x 0.95m	6'4" x 3'1"

Clks - Cloakroom WS - Wardrobe Space (suggestion only, wardrobe not included)

Furniture arrangements are for illustrative purposes only. Items are not included, nor to scale.

The items shown in this key may be subject to change, and positions could vary from those indicated on this floorplan. Please refer to Sales Advisor for details of your selected plot. Computer generated image shown overleaf. External finishes, landscaping and configuration may vary from plot to plot. Please refer to Sales Advisor for further details. All dimensions are approximate and should not be used for carpet sizes, appliance spaces or furniture. We operate a policy of continuous improvement and individual features such as kitchen and bathroom layouts, doors, windows, garages and elevational treatments may vary from time to time. Consequently these particulars should be treated as general guidance only and do not constitute a contract, part of a contract or a warranty. CH/CB/500/S00/S/01/M.



The Puxley

TWO BEDROOM HOME



Bellway



First Floor

Bedroom 1	4.78m x 3.00m <small>(max) (max)</small>	15'8" x 9'10" <small>(max) (max)</small>
Bedroom 2	4.46m x 2.56m <small>(max) (max)</small>	14'8" x 8'5" <small>(max) (max)</small>
Bathroom	2.13m x 1.93m	7'0" x 6'4"



Ground Floor

Kitchen	2.75m x 2.62m	9'0" x 8'7"
Living/Dining Room	4.78m x 3.53m	15'8" x 11'7"
Cloakroom	1.72m x 1.08m	5'8" x 3'7"

Clks - Cloakroom WS - Wardrobe Space (suggestion only, wardrobe not included)

Furniture arrangements are for illustrative purposes only. Items are not included, nor to scale.

The items shown in this key may be subject to change, and positions could vary from those indicated on this floorplan. Please refer to Sales Advisor for details of your selected plot. Computer generated image shown overleaf. External finishes, landscaping and configuration may vary from plot to plot. Please refer to Sales Advisor for further details. All dimensions are approximate and should not be used for carpet sizes, appliance spaces or furniture. We operate a policy of continuous improvement and individual features such as kitchen and bathroom layouts, doors, windows, garages and elevational treatments may vary from time to time. Consequently these particulars should be treated as general guidance only and do not constitute a contract, part of a contract or a warranty.



The Lymner

THREE BEDROOM HOME

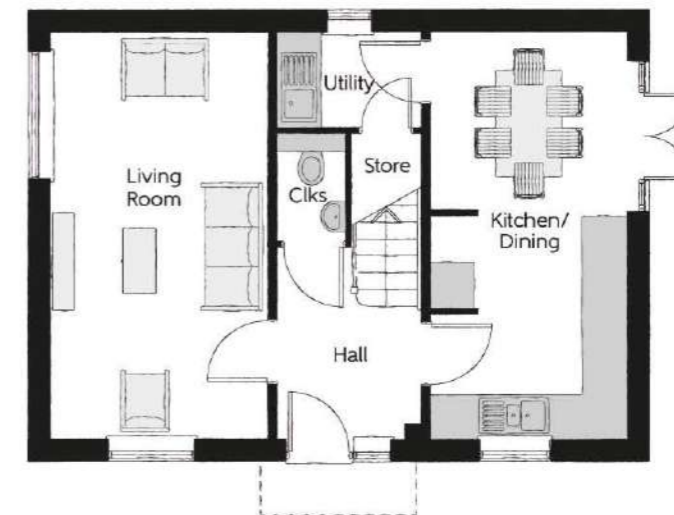


Bellway



First Floor

Bedroom 1	4.07m x 2.77m	13'4" x 9'1"
Bedroom 1 En Suite	2.77m x 1.48m	9'1" x 4'10"
Bedroom 2	3.07m x 2.79m	10'1" x 9'2"
Bedroom 3	3.03m x 2.48m	9'11" x 8'2"
Bathroom	2.26m x 1.92m	7'5" x 6'4"



Ground Floor

Kitchen/Dining	5.64m x 2.71m	18'6" x 8'11"
Living Room	5.64m x 3.01m	18'6" x 9'10"
Utility	1.98m x 1.32m	6'6" x 4'4"
Cloakroom	1.65m x 0.95m	5'5" x 3'1"

Clks - Cloakroom WS - Wardrobe Space (suggestion only, wardrobe not included)

Furniture arrangements are for illustrative purposes only. Items are not included, nor to scale.

The items shown in this key may be subject to change, and positions could vary from those indicated on this floorplan. Please refer to Sales Advisor for details of your selected plot. Computer generated image shown overleaf. External finishes, landscaping and configuration may vary from plot to plot. Please refer to Sales Advisor for further details. All dimensions are approximate and should not be used for carpet sizes, appliance spaces or furniture. We operate a policy of continuous improvement and individual features such as kitchen and bathroom layouts, doors, windows, garages and elevational treatments may vary from time to time. Consequently these particulars should be treated as general guidance only and do not constitute a contract, part of a contract or a warranty. LY/CB/500/500/D/01/C.



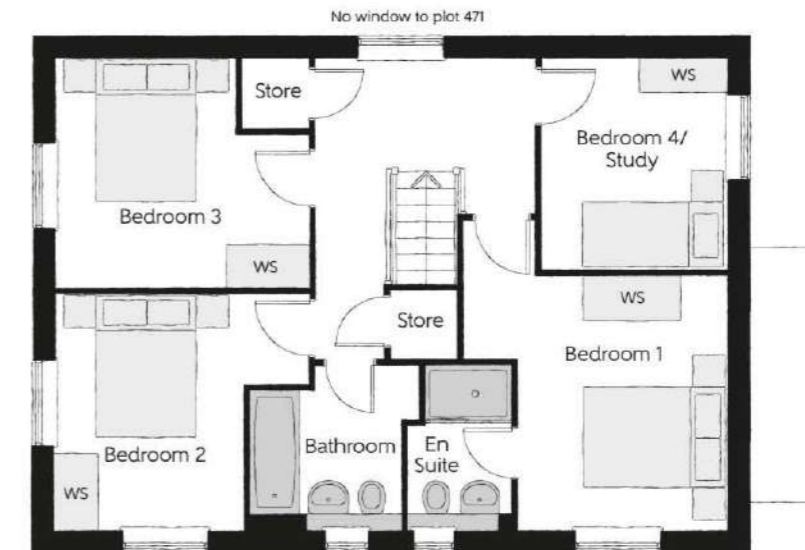
The Bowyer

FOUR BEDROOM HOME



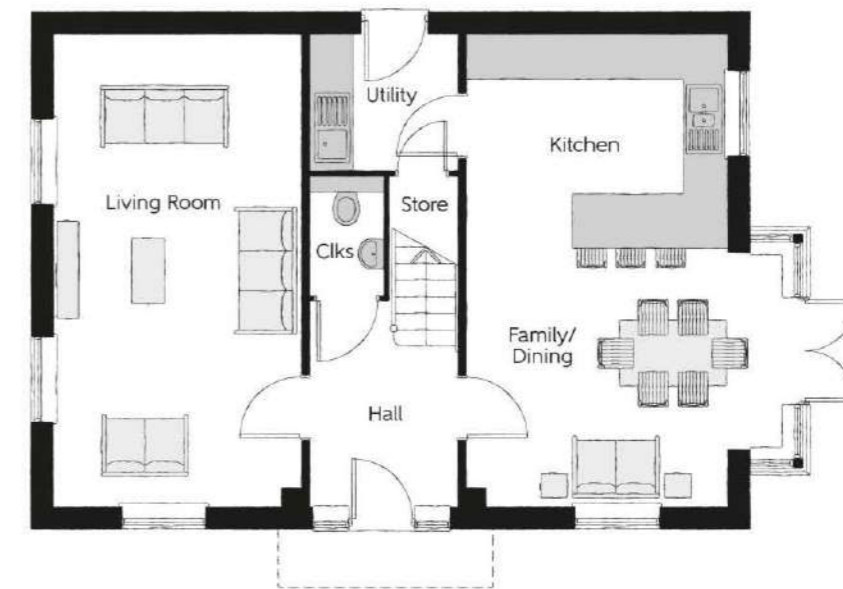
THE
ARTISAN
COLLECTION

Bellway



First Floor

Bedroom 1	4.29m x 3.66m (max) (max)	14'1" x 12'0" (max) (max)
Bedroom 1 En Suite	2.25m x 1.44m	7'5" x 4'9"
Bedroom 2	3.53m x 3.27m (max)	11'7" x 10'9" (max)
Bedroom 3	3.53m x 3.18m (max)	11'7" x 10'5" (max)
Bedroom 4/Study	2.93m x 2.58m	9'7" x 8'6"
Bathroom	2.35m x 2.25m (max)	7'9" x 7'5" (max)



Ground Floor

Kitchen	3.60m x 3.04m	11'10" x 10'0"
Family/Dining	4.39m x 3.50m (inc. bay)	14'5" x 11'6" (inc. bay)
Living Room	6.54m x 3.42m	21'5" x 11'3"
Utility	2.03m x 1.87m	6'8" x 6'2"
Cloakroom	1.65m x 1.00m	5'5" x 3'3"

Clks - Cloakroom WS - Wardrobe Space (suggestion only, wardrobe not included)

Furniture arrangements are for illustrative purposes only. Items are not included, nor to scale.

The items shown in this key may be subject to change, and positions could vary from those indicated on this floorplan. Please refer to Sales Advisor for details of your selected plot. Computer generated image shown overleaf. External finishes, landscaping and configuration may vary from plot to plot. Please refer to Sales Advisor for further details. All dimensions are approximate and should not be used for carpet sizes, appliance spaces or furniture. We operate a policy of continuous improvement and individual features such as kitchen and bathroom layouts, doors, windows, garages and elevational treatments may vary from time to time. Consequently these particulars should be treated as general guidance only and do not constitute a contract, part of a contract or a warranty. BO/CB/500/S00/D/01/K.



The Wolverton

THREE BEDROOM HOME



THE
ARTISAN
COLLECTION

Bellway



First Floor

Bedroom 1	4.85m x 2.68m	15'11" x 8'10'
Bedroom 2	4.26m x 2.59m	14'0" x 8'6"
Bedroom 3	4.26m x 2.17m	14'0" x 7'1"
Bathroom	2.05m x 1.92m	6'9" x 6'4"



Ground Floor

Kitchen	4.85m x 2.66m	15'11" x 8'9"
Living/Dining	4.85m x 4.26m	15'11" x 14'0"
Cloakroom	1.79m x 1.00m	5'10" x 3'3"

Clks - Cloakroom WS - Wardrobe Space (suggestion only, wardrobe not included)

Furniture arrangements are for illustrative purposes only. Items are not included, nor to scale.

The items shown in this key may be subject to change, and positions could vary from those indicated on this floorplan. Please refer to Sales Advisor for details of your selected plot. Computer generated image shown overleaf. External finishes, landscaping and configuration may vary from plot to plot. Please refer to Sales Advisor for further details. All dimensions are approximate and should not be used for carpet sizes, appliance spaces or furniture. We operate a policy of continuous improvement and individual features such as kitchen and bathroom layouts, doors, windows, garages and elevational treatments may vary from time to time. Consequently these particulars should be treated as general guidance only and do not constitute a contract, part of a contract or a warranty.



Second Floor

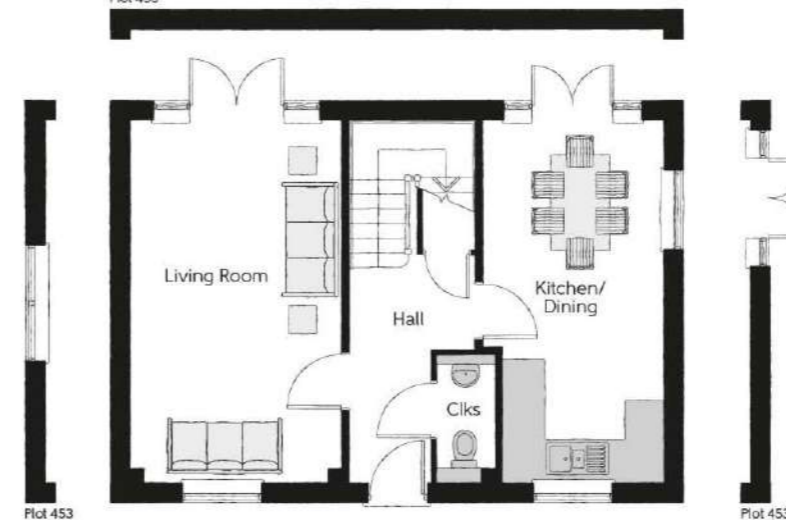
Bedroom 3	4.60m x 3.33m (max)	15'1" x 11'0" (max)
Bedroom 4	4.60m x 2.87m (max)	15'1" x 9'5" (max)
En Suite	1.94m x 1.76m	6'4" x 5'9"

First Floor

Bedroom 1	4.11m x 3.33m (max)	13'6" x 11'10" (max)
Bedroom 1 En Suite	2.44m x 1.43m	8'1" x 4'8"
Bedroom 2	5.64m x 2.87m (max)	18'6" x 9'5" (max)
Bathroom	3.17m x 1.92m (max)	10'5" x 6'4" (max)



Plot 453



Ground Floor

Kitchen/Dining	5.64m x 2.81m (max)	18'6" x 9'2" (max)
Living Room	5.64m x 3.29m	18'6" x 10'10"
Cloakroom	1.97m x 0.91m	6'6" x 3'0"

The Alwick

FOUR BEDROOM HOME



THE
ARTISAN
COLLECTION

Bellway

Clks - Cloakroom CYL - Hot Water Cylinder WS - Wardrobe Space (suggestion only, wardrobe not included)

Furniture arrangements are for illustrative purposes only. Items are not included, nor to scale.

The items shown in this key may be subject to change, and positions could vary from those indicated on this floorplan. Please refer to Sales Advisor for details of your selected plot. Computer generated image shown overleaf. External finishes, landscaping and configuration may vary from plot to plot. Please refer to Sales Advisor for further details. All dimensions are approximate and should not be used for carpet sizes, appliance spaces or furniture. We operate a policy of continuous improvement and individual features such as kitchen and bathroom layouts, doors, windows, garages and elevational treatments may vary from time to time. Consequently these particulars should be treated as general guidance only and do not constitute a contract, part of a contract or a warranty.



Second Floor

Bedroom 2	4.67m x 3.73m	15'4" x 12'3"
Bedroom 4/Study	3.95m x 2.25m (max) (max)	13'0" x 7'5" (max) (max)
Shower	2.33m x 2.27m	7'8" x 7'5"

First Floor

Bedroom 1	4.67m x 3.37m (max) (max)	15'4" x 11'1" (max) (max)
Bedroom 1 En Suite	2.15m x 1.45m	7'1" x 4'9"
Bedroom 3	3.46m x 2.38m	11'4" x 7'10"
Bathroom	2.20m x 1.90m	7'3" x 6'3"



Ground Floor

Kitchen	3.17m x 2.50m	10'5" x 8'2"
Living/Dining	6.26m x 4.67m (max) (max)	20'7" x 15'4" (max) (max)
Cloakroom	1.90m x 0.93m	6'3" x 3'1"

Clks - Cloakroom WS - Wardrobe Space (suggestion only, wardrobe not included) RW - Roof Window ----- Reduced Head Height

Furniture arrangements are for illustrative purposes only. Items are not included, nor to scale.

The items shown in this key may be subject to change, and positions could vary from those indicated on this floorplan. Please refer to Sales Advisor for details of your selected plot. Computer generated image shown overleaf. External finishes, landscaping and configuration may vary from plot to plot. Please refer to Sales Advisor for further details. All dimensions are approximate and should not be used for carpet sizes, appliance spaces or furniture. We operate a policy of continuous improvement and individual features such as kitchen and bathroom layouts, doors, windows, garages and elevational treatments may vary from time to time. Consequently these particulars should be treated as general guidance only and do not constitute a contract, part of a contract or a warranty. WW/CB/500/500/S/01/D.

The Wainwright

FOUR BEDROOM HOME



THE ARTISAN COLLECTION





The Scrivener

FOUR BEDROOM HOME



THE
ARTISAN
COLLECTION

Bellway



First Floor

Bedroom 1	4.59m x 2.96m (inc. bay)	15'1" x 9'9" (inc. bay)
Bedroom 1 En Suite	2.22m x 1.33m	7'3" x 4'4"
Bedroom 2	3.46m x 3.03m (max)	11'4" x 9'11" (max)
Bedroom 3	2.97m x 2.87m (max)	9'9" x 9'5" (max)
Bedroom 4/Study	3.17m x 2.38m	10'5" x 7'10"
Bathroom	2.07m x 1.91m	6'8" x 6'3"



Ground Floor

Kitchen	3.20m x 2.68m	10'6" x 8'10"
Family/Dining	4.48m x 2.88m (max)	14'8" x 9'6" (max)
Living Room	4.94m x 3.54m (inc. bay)	16'3" x 11'7" (inc. bay)
Utility	1.84m x 1.71m	6'0" x 5'7"
Cloakroom	2.13m x 0.97m	7'0" x 3'2"

Clks - Cloakroom WS - Wardrobe Space (suggestion only, wardrobe not included)

Furniture arrangements are for illustrative purposes only. Items are not included, nor to scale.

The items shown in this key may be subject to change, and positions could vary from those indicated on this floorplan. Please refer to Sales Advisor for details of your selected plot. Computer generated image shown overleaf. External finishes, landscaping and configuration may vary from plot to plot. Please refer to Sales Advisor for further details. All dimensions are approximate and should not be used for carpet sizes, appliance spaces or furniture. We operate a policy of continuous improvement and individual features such as kitchen and bathroom layouts, doors, windows, garages and elevational treatments may vary from time to time. Consequently these particulars should be treated as general guidance only and do not constitute a contract, part of a contract or a warranty. SC/CB/500/S00/D/01/N.



The Cartwright

FOUR BEDROOM HOME



THE ARTISAN COLLECTION

Bellway



Second Floor

Bedroom 2	3.63m x 4.66m (max) (max)	11'11" x 15'3" (max) (max)
Bedroom 4	2.25m x 3.94m	7'5" x 12'11"
Shower	2.33m x 2.85m	7'8" x 9'4"

First Floor

Bedroom 1	4.67m x 3.03m (max) (max)	15'4" x 9'11" (max) (max)
Bedroom 1 En Suite	1.39m x 2.15m	4'7" x 7'1"
Bedroom 3	2.38m x 3.46m	7'10" x 11'4"
Bathroom	2.20m x 1.91m	7'3" x 6'3"



No window to plots 514 & 525

Ground Floor

Kitchen/Dining	4.67m x 3.99m (max)	15'4" x 13'1" (max)
Living Room	3.63m x 5.33m (max) (max)	11'11" x 17'6" (max) (max)
Cloakroom	0.95m x 1.90m	3'1" x 6'3"

Clks - Cloakroom CYL - Hot Water Cylinder WS - Wardrobe Space (suggestion only, wardrobe not included) RW - Roof Window --- - Reduced Head Height

Furniture arrangements are for illustrative purposes only. Items are not included, nor to scale.

The items shown in this key may be subject to change, and positions could vary from those indicated on this floorplan. Please refer to Sales Advisor for details of your selected plot. Computer generated image shown overleaf. External finishes, landscaping and configuration may vary from plot to plot. Please refer to Sales Advisor for further details. All dimensions are approximate and should not be used for carpet sizes, appliance spaces or furniture. We operate a policy of continuous improvement and individual features such as kitchen and bathroom layouts, doors, windows, garages and elevational treatments may vary from time to time. Consequently these particulars should be treated as general guidance only and do not constitute a contract, part of a contract or a warranty. CW/CB/500/500/S/01/E.



The Cherry

Four bedroom home

The Cherry

FOUR BEDROOM HOME



Second Floor

Bedroom 1	4.79m x 3.00m	15'8" x 9'10"
Dressing	2.06m x 2.21m	6'9" x 7'3"
Bedroom 1 En Suite	2.51m x 1.65m	8'2" x 5'5"
Bedroom 4/Study	3.07m x 2.50m	10'0" x 8'2"

First Floor

Bedroom 2	4.79m x 3.00m	15'8" x 9'10"
Bedroom 3	4.79m x 2.32m	15'8" x 7'7"
Bathroom	2.21m x 1.92m	7'3" x 6'3"



Ground Floor

Kitchen/Dining	2.50m x 4.79m	8'2" x 15'8"
Living Room	3.03m x 4.79m	9'11" x 15'8"
Cloakroom	0.96m x 1.96m	3'1" x 6'5"

Clks - Cloakroom WS - Wardrobe Space (suggestion only, wardrobe not included) W - Fitted Wardrobe

Furniture arrangements are for illustrative purposes only. Items are not included, nor to scale.

The items shown in this key may be subject to change, and positions could vary from those indicated on this floorplan. Please refer to Sales Advisor for details of your selected plot. Computer generated image shown overleaf. External finishes, landscaping and configuration may vary from plot to plot. Please refer to Sales Advisor for further details. All dimensions are approximate and should not be used for carpet sizes, appliance spaces or furniture. We operate a policy of continuous improvement and individual features such as kitchen and bathroom layouts, doors, windows, garages and elevational treatments may vary from time to time. Consequently these particulars should be treated as general guidance only and do not constitute a contract, part of a contract or a warranty.



THE ARTISAN COLLECTION





The Denbigh

FOUR BEDROOM HOME



Bellway



First Floor

Bedroom 1	3.03m x 4.31m	9'11" x 14'2"
Bedroom 2	3.21m x 3.41m <small>(max) (max)</small>	10'6" x 11'2" <small>(max) (max)</small>
Bedroom 3	2.45m x 4.31m	8'1" x 14'2"
Study/Bedroom 4	2.29m x 2.32m <small>(max) (max)</small>	7'6" x 7'7" <small>(max) (max)</small>
Bathroom	1.94m x 2.13m	6'4" x 7'0"



Ground Floor

Kitchen	2.64m x 3.25m	8'8" x 10'8"
Living/Dining Room	5.57m x 5.72m <small>(max) (max)</small>	18'3" x 18'9" <small>(max) (max)</small>
Cloakroom	1.41m x 1.81m	4'8" x 5'11"

Clks - Cloakroom WS - Wardrobe Space (suggestion only, wardrobe not included)

Furniture arrangements are for illustrative purposes only. Items are not included, nor to scale.

The items shown in this key may be subject to change, and positions could vary from those indicated on this floorplan. Please refer to Sales Advisor for details of your selected plot. Computer generated image shown overleaf. External finishes, landscaping and configuration may vary from plot to plot. Please refer to Sales Advisor for further details. All dimensions are approximate and should not be used for carpet sizes, appliance spaces or furniture. We operate a policy of continuous improvement and individual features such as kitchen and bathroom layouts, doors, windows, garages and elevational treatments may vary from time to time. Consequently these particulars should be treated as general guidance only and do not constitute a contract, part of a contract or a warranty.



The Hornbeam

Three bedroom home

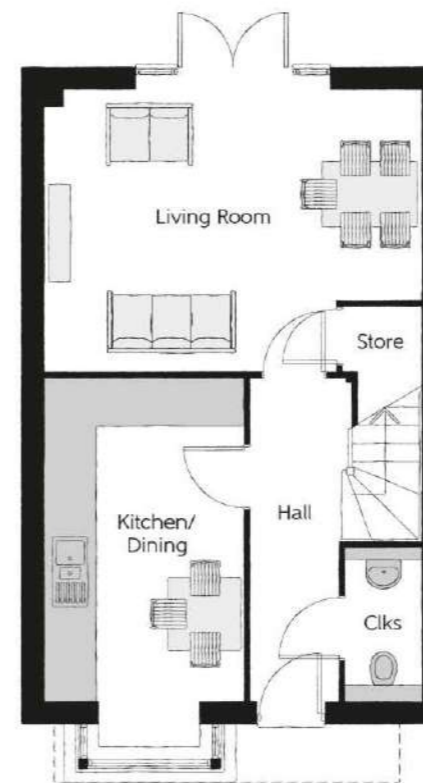


Second Floor

Bedroom 1	3.69m x 5.26m	12'1" x 17'3"
Bedroom 1 En Suite	2.37m x 1.66m	7'9" x 5'5"
Dressing	3.00m x 2.37m	9'10" x 7'9"

First Floor

Bedroom 2	4.78m x 2.67m	15'8" x 8'9"
Bedroom 3	2.64m x 2.63m	8'7" x 8'7"
Bathroom	2.25m x 1.92m	7'4" x 6'3"



Ground Floor

Kitchen/Dining	4.08m x 2.51m	13'4" x 8'2"
Living Room	4.78m x 5.55m	15'8" x 18'2"
Cloakroom	1.92m x 0.96m	6'3" x 3'1"

Clks - Cloakroom WS - Wardrobe Space (suggestion only, wardrobe not included) W - Fitted Wardrobe

Furniture arrangements are for illustrative purposes only. Items are not included, nor to scale.

The items shown in this key may be subject to change, and positions could vary from those indicated on this floorplan. Please refer to Sales Advisor for details of your selected plot. Computer generated image shown overleaf. External finishes, landscaping and configuration may vary from plot to plot. Please refer to Sales Advisor for further details. All dimensions are approximate and should not be used for carpet sizes, appliance spaces or furniture. We operate a policy of continuous improvement and individual features such as kitchen and bathroom layouts, doors, windows, garages and elevational treatments may vary from time to time. Consequently these particulars should be treated as general guidance only and do not constitute a contract, part of a contract or a warranty.

The Hornbeam

THREE BEDROOM HOME



THE ARTISAN COLLECTION

Bellway



The Joiner

TWO BEDROOM HOME

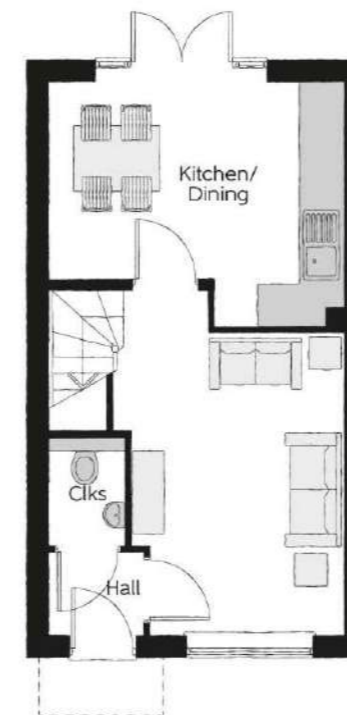


Bellway



First Floor

Bedroom 1	4.05m x 2.72m	13'3" x 8'11"
Bedroom 2	4.05m x 2.40m <small>(max)</small>	13'3" x 7'10" <small>(max)</small>
Bathroom	1.91m x 2.11m	6'3" x 6'11"



Ground Floor

Kitchen/Dining	4.05m x 3.38m <small>(max)</small>	13'3" x 11'1" <small>(max)</small>
Living Room	2.95m x 4.85m <small>(max)</small>	9'8" x 15'11" <small>(max)</small>
Cloakroom	1.01m x 1.50m	3'4" x 4'11"

Clks - Cloakroom WS - Wardrobe Space (suggestion only, wardrobe not included)

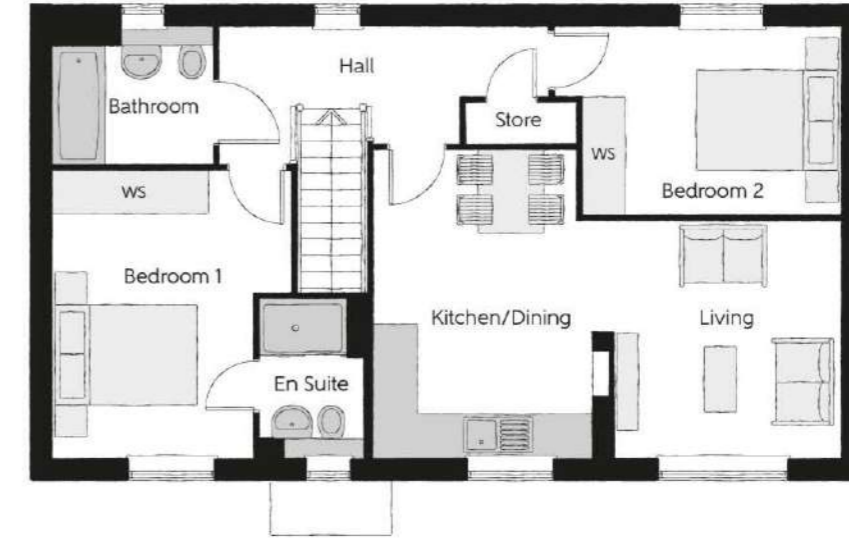
Furniture arrangements are for illustrative purposes only. Items are not included, nor to scale.

The items shown in this key may be subject to change, and positions could vary from those indicated on this floorplan. Please refer to Sales Advisor for details of your selected plot. Computer generated image shown overleaf. External finishes, landscaping and configuration may vary from plot to plot. Please refer to Sales Advisor for further details. All dimensions are approximate and should not be used for carpet sizes, appliance spaces or furniture. We operate a policy of continuous improvement and individual features such as kitchen and bathroom layouts, doors, windows, garages and elevational treatments may vary from time to time. Consequently these particulars should be treated as general guidance only and do not constitute a contract, part of a contract or a warranty. JO/CB/500/500/S/01/J.



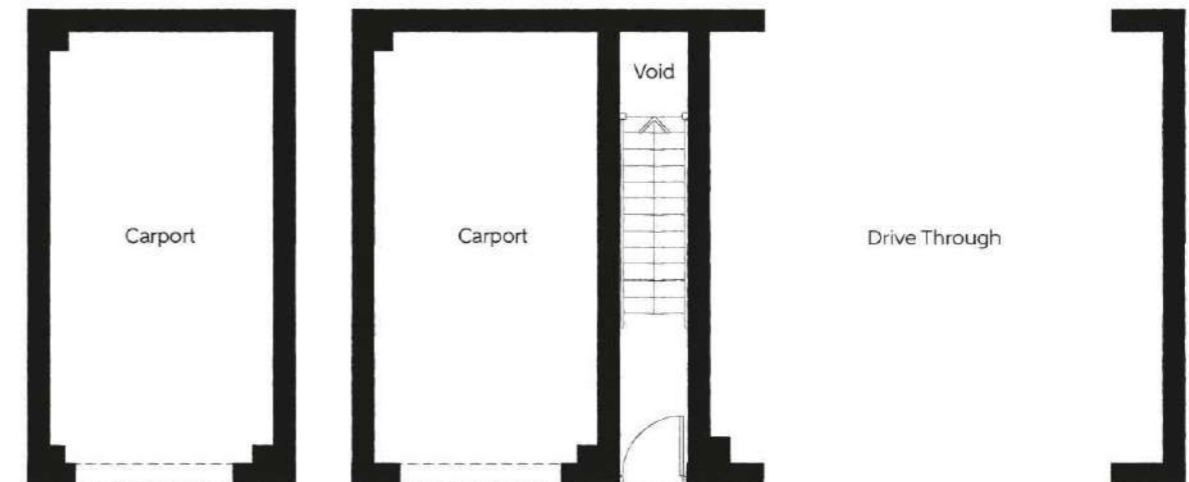
The Saddler

Two bedroom coach house



First Floor

Kitchen/Dining	3.08m x 4.28m (max) (max)	10'1" x 14'0" (max) (max)
Living	3.14m x 3.29m	10'4" x 10'10"
Bedroom 1	3.31m x 3.98m (max)	10'10" x 13'1" (max)
Bedroom 1 En Suite	1.46m x 2.20m	4'9" x 7'3"
Bedroom 2	3.58m x 2.59m	11'9" x 8'6"
Bathroom	2.21m x 1.91m	7'3" x 6'3"



Ground Floor

Important note: The Saddler is allocated a single garage. Please refer to the Sales Advisor for further information.

Clks - Cloakroom WS - Wardrobe Space (suggestion only, wardrobe not included)

Furniture arrangements are for illustrative purposes only. Items are not included, nor to scale.

The items shown in this key may be subject to change, and positions could vary from those indicated on this floorplan. Please refer to Sales Advisor for details of your selected plot. Computer generated image shown overleaf. External finishes, landscaping and configuration may vary from plot to plot. Please refer to Sales Advisor for further details. All dimensions are approximate and should not be used for carpet sizes, appliance spaces or furniture. We operate a policy of continuous improvement and individual features such as kitchen and bathroom layouts, doors, windows, garages and elevational treatments may vary from time to time. Consequently these particulars should be treated as general guidance only and do not constitute a contract, part of a contract or a warranty. SA/CB/500/500/D/01/E.

The Saddler

TWO BEDROOM COACH HOUSE



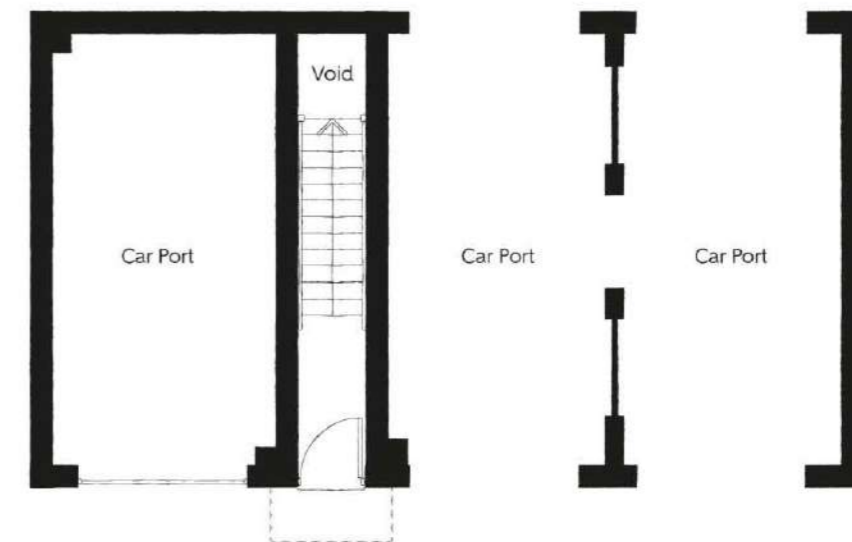
THE
ARTISAN
COLLECTION

Bellway



First Floor

Kitchen/Dining/Living	6.00m x 3.59m (max) (max)	19'8" x 11'9" (max) (max)
Bedroom 1	3.31m x 3.98m (max)	10'10" x 13'1" (max)
Bedroom 1 En Suite	1.46m x 2.20m	4'9" x 7'3"
Bedroom 2	3.97m x 2.85m	13'0" x 9'5"
Bathroom	2.21m x 1.91m	7'3" x 6'3"



Ground Floor

Important note: The Saddler is allocated a single garage. Please refer to the Sales Advisor for further information.

Clks - Cloakroom WS - Wardrobe Space (suggestion only, wardrobe not included)

Furniture arrangements are for illustrative purposes only. Items are not included, nor to scale.

The items shown in this key may be subject to change, and positions could vary from those indicated on this floorplan. Please refer to Sales Advisor for details of your selected plot. Computer generated image shown overleaf. External finishes, landscaping and configuration may vary from plot to plot. Please refer to Sales Advisor for further details. All dimensions are approximate and should not be used for carpet sizes, appliance spaces or furniture. We operate a policy of continuous improvement and individual features such as kitchen and bathroom layouts, doors, windows, garages and elevational treatments may vary from time to time. Consequently these particulars should be treated as general guidance only and do not constitute a contract, part of a contract or a warranty. SA/CB/500/500/D/01/E.

The Elfield

TWO BEDROOM COACH HOUSE



THE
ARTISAN
COLLECTION

Bellway



The Tanner

THREE BEDROOM HOME



THE
ARTISAN
COLLECTION

Bellway



First Floor

Bedroom 1	4.01m x 3.18m <small>(max)</small>	13'1" x 10'5" <small>(max)</small>
Bedroom 1 En Suite	2.39m x 2.09m <small>(max)</small>	7'10" x 6'10" <small>(max)</small>
Bedroom 2	4.50m x 3.29m <small>(max)</small>	14'9" x 10'10" <small>(max)</small>
Bedroom 3	2.72m x 2.76m <small>(max)</small>	8'11" x 9'1" <small>(max)</small>
Bathroom	1.91m x 1.91m	6'3" x 6'3"



Ground Floor

Kitchen/Dining	3.76m x 5.19m <small>(max)</small>	12'4" x 17'0" <small>(max)</small>
Living Room	3.01m x 5.19m	9'10" x 17'0"
Cloakroom	1.50m x 1.47m <small>(max)</small>	4'11" x 4'10" <small>(max)</small>

Clks - Cloakroom WS - Wardrobe Space (suggestion only, wardrobe not included)

Furniture arrangements are for illustrative purposes only. Items are not included, nor to scale.

The items shown in this key may be subject to change, and positions could vary from those indicated on this floorplan. Please refer to Sales Advisor for details of your selected plot. Computer generated image shown overleaf. External finishes, landscaping and configuration may vary from plot to plot. Please refer to Sales Advisor for further details. All dimensions are approximate and should not be used for carpet sizes, appliance spaces or furniture. We operate a policy of continuous improvement and individual features such as kitchen and bathroom layouts, doors, windows, garages and elevational treatments may vary from time to time. Consequently these particulars should be treated as general guidance only and do not constitute a contract, part of a contract or a warranty. TN/CB/500/S00/S/D1/E.

Bancroft Apartments

TWO BEDROOM APARTMENTS



THE
ARTISAN
COLLECTION



Whitehouse Gardens
A development of new homes in Whitehouse, Milton Keynes

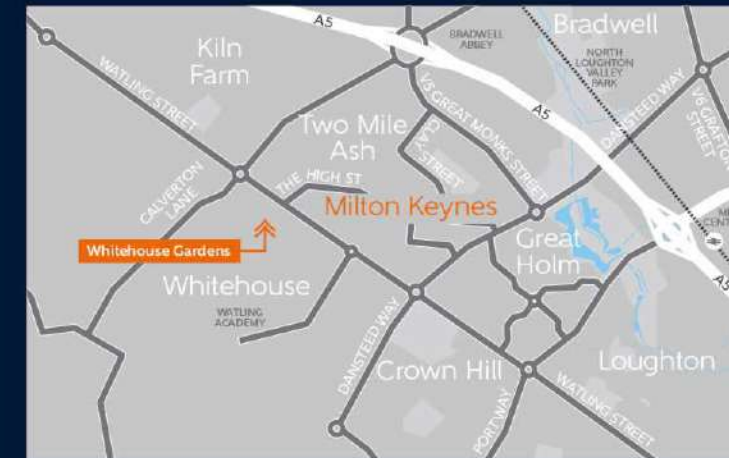
Bellway

Rambouillet Drive
Whitehouse, Milton Keynes
MK8 1GT

Telephone: 01908 036 367
bellway.co.uk

/// football.blaze animator

what3words provides exact locations
so you know exactly where to find
our development.



Over 75
YEARS OF QUALITY
SINCE 1948



Bellway abides by the New
Homes Quality Code (NHQC),
an independent industry code
established to champion quality
new homes and deliver better
outcomes for customers.

Bellway





The Silbury – Plots 485, 487, 489 & 491

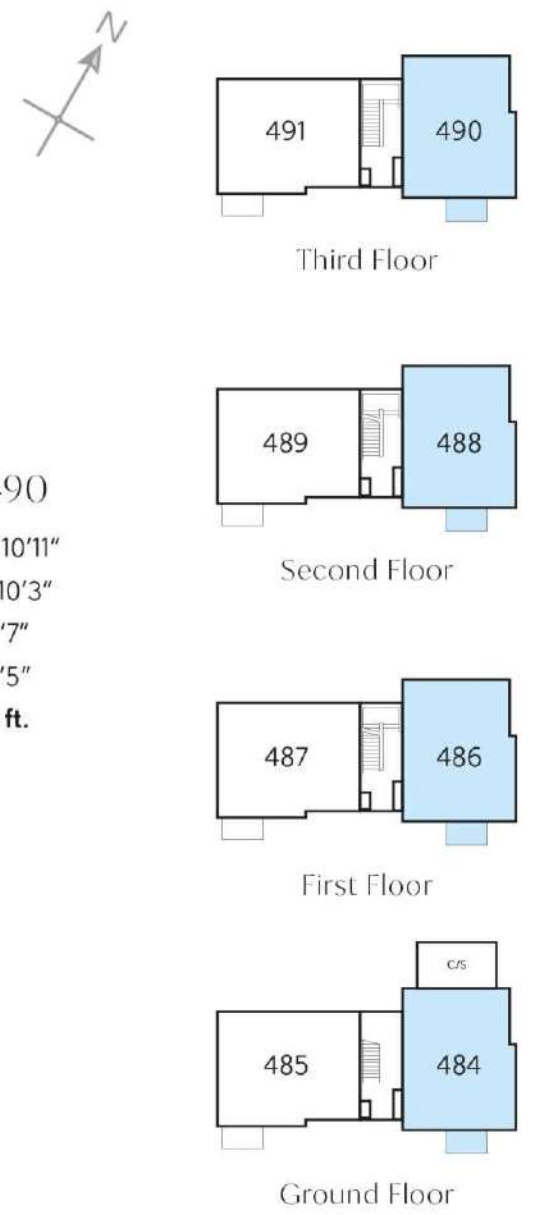
Kitchen/Living/Dining	6.51m x 4.12m (max)	21'4" x 13'6" (max)
Bedroom 1	3.70m x 3.39m	12'1" x 11'1"
Bedroom 2	3.49m x 2.45m	11'5" x 8'0"
Bathroom	2.26m x 1.73m	7'4" x 5'8"
Total area	62.7 sq. m.	674 sq. ft.



a/c – airing cupboard WS – Wardrobe Space (suggestion only, wardrobe not included) CYL – Hot Water Cylinder

Furniture arrangements are for illustrative purposes only. Items are not included, nor to scale.

The items shown in this key may be subject to change, and positions could vary from those indicated on this floorplan. Please refer to Sales Advisor for details of your selected plot. External finishes and landscaping may vary. Please refer to Sales Advisor for further details. All dimensions are approximate and should not be used for carpet sizes, appliance spaces or furniture. We operate a policy of continuous improvement and individual features such as kitchen and bathroom layouts, doors, windows, garages and elevational treatments may vary from time to time. Consequently these particulars should be treated as general guidance only and do not constitute a contract, part of a contract or a warranty.



The Avebury – Plots 484, 486, 488 & 490

Kitchen/Living/Dining	7.10m x 3.35m	23'3" x 10'11"
Bedroom 1	4.44m x 3.14m	14'6" x 10'3"
Bedroom 2	3.55m x 2.33m (max)	11'7" x 7'7" (max)
Bathroom	2.22m x 1.67m	7'3" x 5'5"
Total area	63.5 sq. m.	675 sq. ft.



a/c – airing cupboard WS – Wardrobe Space (suggestion only, wardrobe not included) CYL – Hot Water Cylinder

Furniture arrangements are for illustrative purposes only. Items are not included, nor to scale.

The items shown in this key may be subject to change, and positions could vary from those indicated on this floorplan. Please refer to Sales Advisor for details of your selected plot. External finishes and landscaping may vary. Please refer to Sales Advisor for further details. All dimensions are approximate and should not be used for carpet sizes, appliance spaces or furniture. We operate a policy of continuous improvement and individual features such as kitchen and bathroom layouts, doors, windows, garages and elevational treatments may vary from time to time. Consequently these particulars should be treated as general guidance only and do not constitute a contract, part of a contract or a warranty.

Brook Apartments

TWO BEDROOM APARTMENTS



THE
ARTISAN
COLLECTION



Whitehouse Gardens
A development of new homes in Whitehouse, Milton Keynes

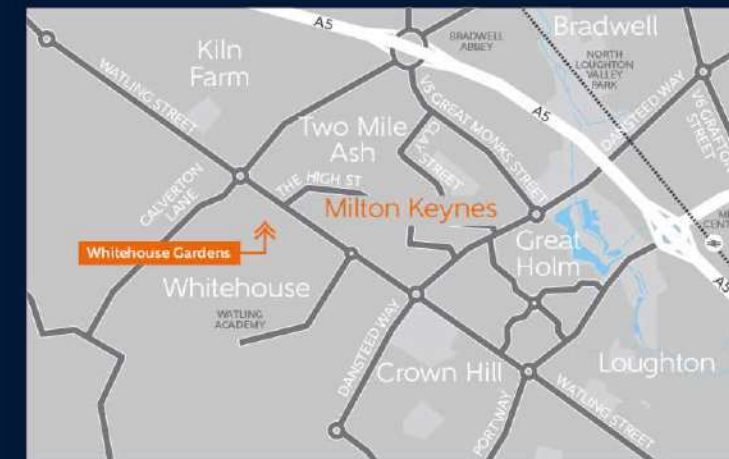
Bellway

Rambouillet Drive
Whitehouse, Milton Keynes
MK8 1GT

Telephone: 01908 036 367
bellway.co.uk

/// football.blaze animator

what3words provides exact locations
so you know exactly where to find
our development.



Over 75
YEARS OF QUALITY
SINCE 1946



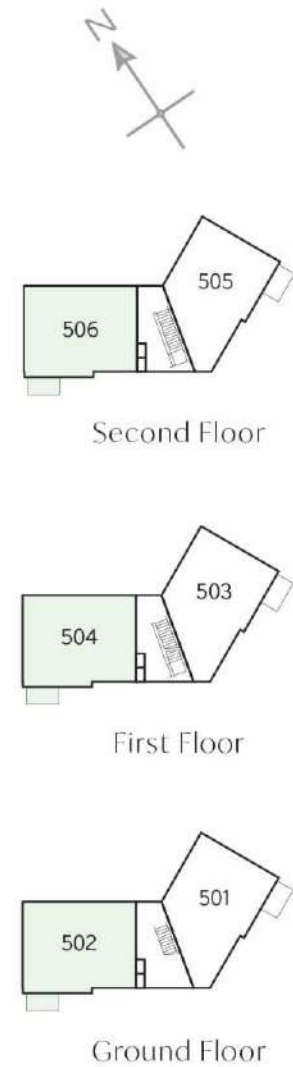
Bellway abides by the New
Homes Quality Code (NHQC),
an independent industry code
established to champion quality
new homes and deliver better
outcomes for customers.

Bellway



- | Key to plan | Material Finishes |
|-------------------|----------------------------|
| b/s Bin store | (R) - Render Version |
| c/s Cycle store | (W) - Weatherboard Version |
| v Visitor parking | |

The site plan is drawn to show the relative position of individual properties. NOT TO SCALE. This is a two dimensional drawing and will not show land contours and gradients, boundary treatments, landscaping or local authority street lighting. Footpaths subject to change. For details of individual properties and availability please refer to our Sales Advisor.



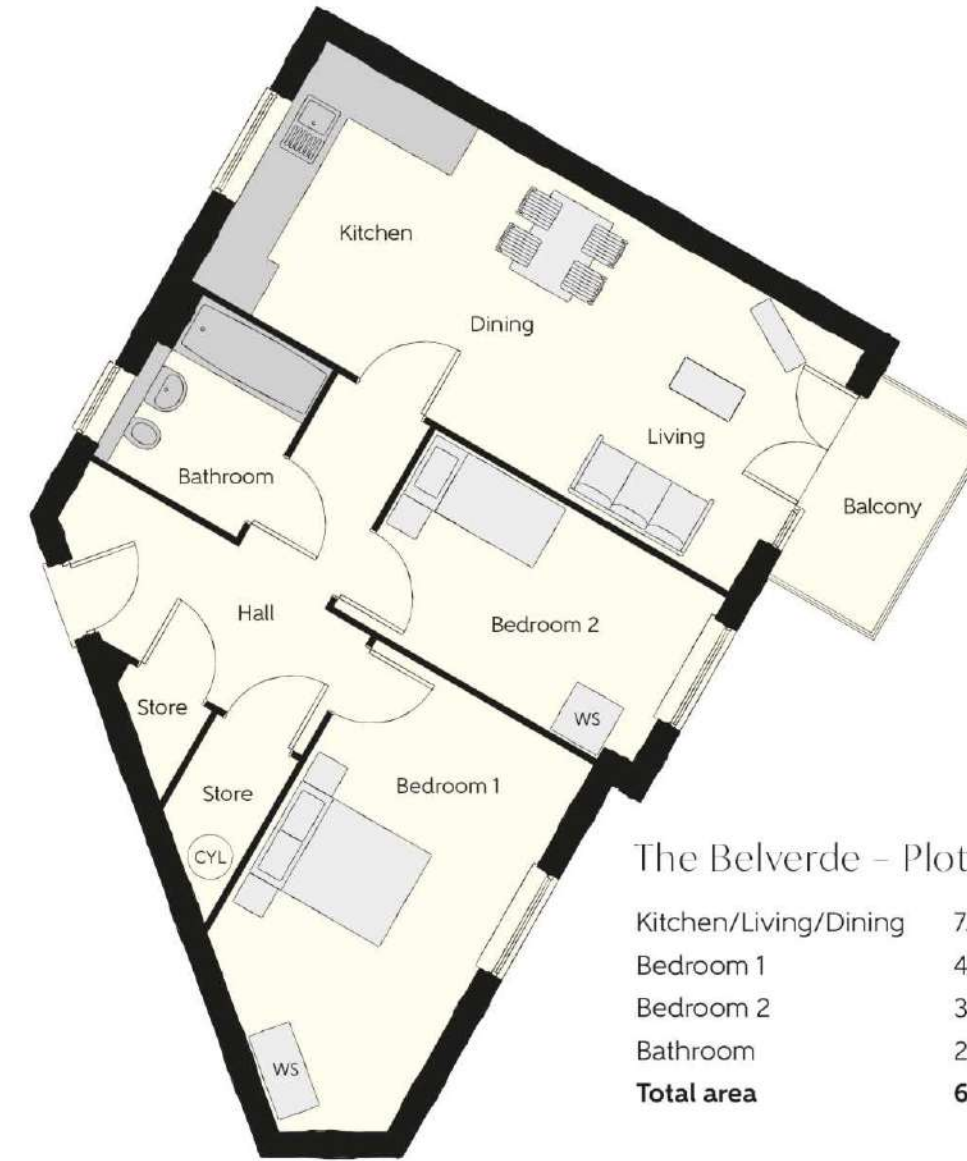
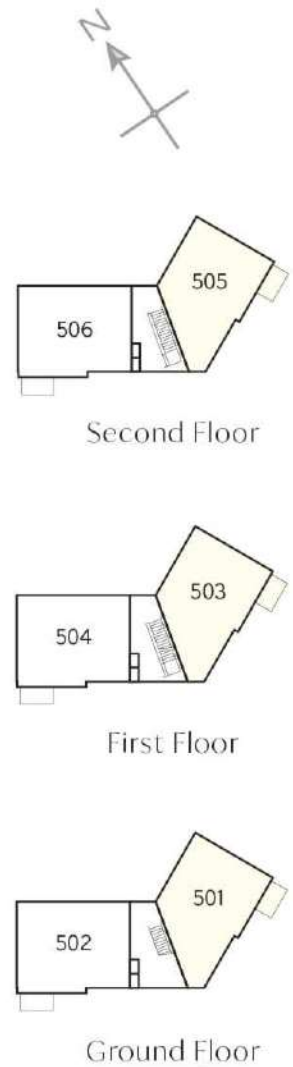
The Danstead – Plots 502, 504 & 506

Kitchen/Living/Dining	7.04m x 4.41m <small>(max)</small>	23'1" x 14'5" <small>(max)</small>
Bedroom 1	3.49m x 3.37m	11'5" x 11'0"
Bedroom 2	3.83m x 2.32m	12'6" x 7'7"
Bathroom	2.20m x 1.96m	7'2" x 6'5"
Total area	62.6 sq. m.	683 sq. ft.

a/c – airing cupboard WS – Wardrobe Space (suggestion only, wardrobe not included) CYL – Hot Water Cylinder

Furniture arrangements are for illustrative purposes only. Items are not included, nor to scale.

The items shown in this key may be subject to change, and positions could vary from those indicated on this floorplan. Please refer to Sales Advisor for details of your selected plot. External finishes and landscaping may vary. Please refer to Sales Advisor for further details. All dimensions are approximate and should not be used for carpet sizes, appliance spaces or furniture. We operate a policy of continuous improvement and individual features such as kitchen and bathroom layouts, doors, windows, garages and elevational treatments may vary from time to time. Consequently these particulars should be treated as general guidance only and do not constitute a contract, part of a contract or a warranty.



The Belverde – Plots 501, 503 & 505

Kitchen/Living/Dining	7.10m x 3.16m	23'3" x 10'4"
Bedroom 1	4.87m x 2.89m	15'11" x 9'5"
Bedroom 2	3.83m x 2.35m	12'6" x 7'8"
Bathroom	2.22m x 1.96m	7'3" x 6'5"
Total area	62.6 sq. m.	674 sq. ft.

a/c – airing cupboard WS – Wardrobe Space (suggestion only, wardrobe not included) CYL – Hot Water Cylinder

Furniture arrangements are for illustrative purposes only. Items are not included, nor to scale.

The items shown in this key may be subject to change, and positions could vary from those indicated on this floorplan. Please refer to Sales Advisor for details of your selected plot. External finishes and landscaping may vary. Please refer to Sales Advisor for further details. All dimensions are approximate and should not be used for carpet sizes, appliance spaces or furniture. We operate a policy of continuous improvement and individual features such as kitchen and bathroom layouts, doors, windows, garages and elevational treatments may vary from time to time. Consequently these particulars should be treated as general guidance only and do not constitute a contract, part of a contract or a warranty.

Grange Apartments

TWO BEDROOM APARTMENTS



THE
ARTISAN
COLLECTION



Whitehouse Gardens
A development of new homes in Whitehouse, Milton Keynes

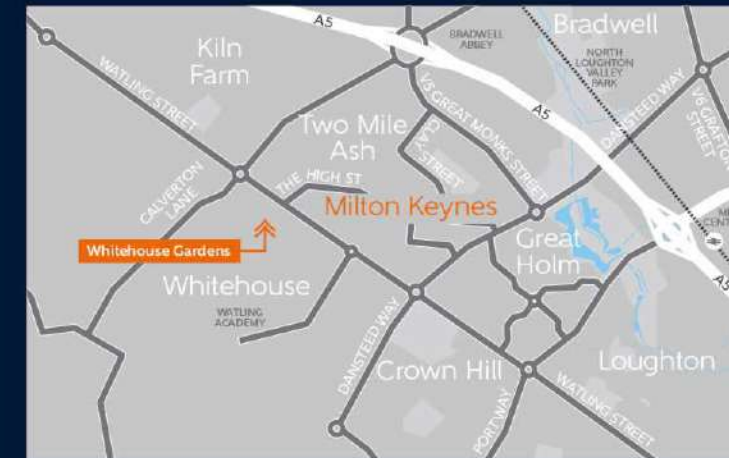


Rambouillet Drive
Whitehouse, Milton Keynes
MK8 1GT

Telephone: 01908 036 367
bellway.co.uk

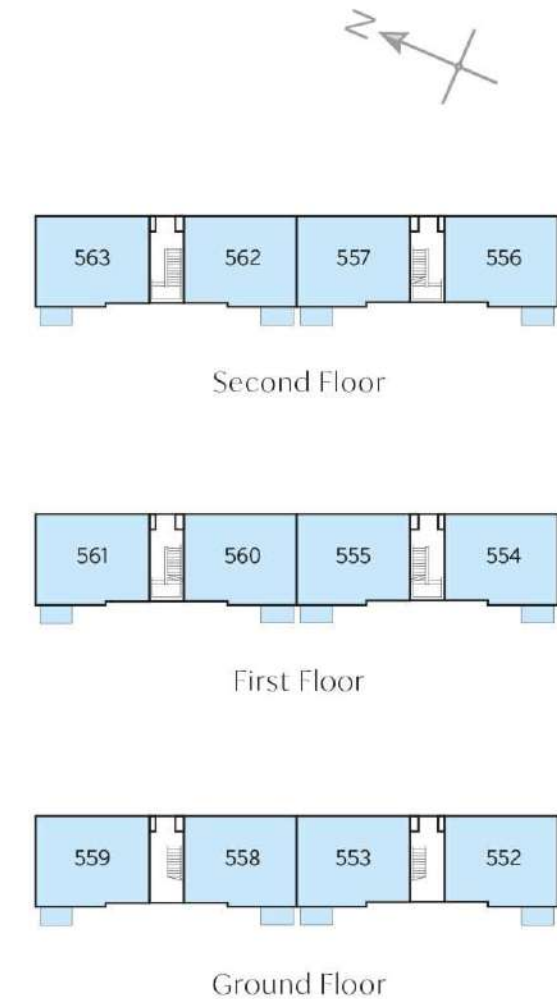
/// football.blaze animator

what3words provides exact locations
so you know exactly where to find
our development.



Bellway abides by the New Homes Quality Code (NHQC), an independent industry code established to champion quality new homes and deliver better outcomes for customers.





The Woolstone - Plots 552, 553, 554, 555, 556, 557, 559, 560, 561, 562, 563 & 568

Kitchen/Living/Dining	6.49m x 4.37m	21'3" x 14'4"
Bedroom 1	3.45m x 3.33m	11'3" x 10'11"
Bedroom 2	3.79m x 2.29m	12'5" x 7'6"
Bathroom	2.19m x 1.92m	7'2" x 6'3"
Total area	62.6 sq. m.	674 sq. ft.

a/c - airing cupboard WS - Wardrobe Space (suggestion only, wardrobe not included) CYL - Hot Water Cylinder

Furniture arrangements are for illustrative purposes only. Items are not included, nor to scale.

The items shown in this key may be subject to change, and positions could vary from those indicated on this floorplan. Please refer to Sales Advisor for details of your selected plot. External finishes and landscaping may vary. Please refer to Sales Advisor for further details. All dimensions are approximate and should not be used for carpet sizes, appliance spaces or furniture. We operate a policy of continuous improvement and individual features such as kitchen and bathroom layouts, doors, windows, garages and elevational treatments may vary from time to time. Consequently these particulars should be treated as general guidance only and do not constitute a contract, part of a contract or a warranty.

Neath Apartments

ONE BEDROOM APARTMENTS



THE
ARTISAN
COLLECTION



Whitehouse Gardens
A development of new homes in Whitehouse, Milton Keynes

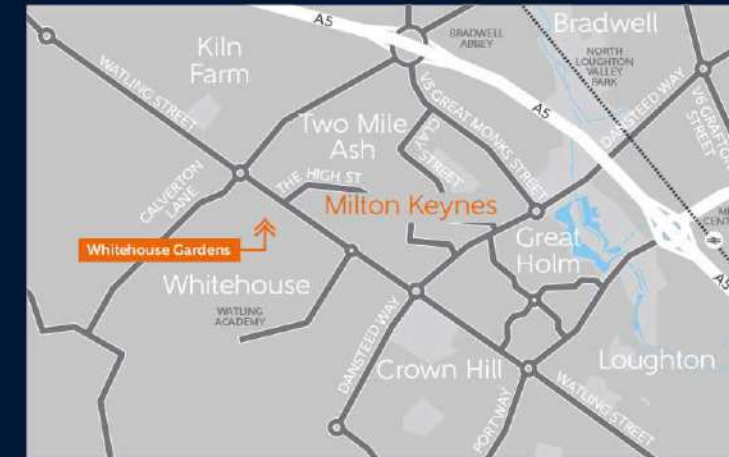
Bellway

Rambouillet Drive
Whitehouse, Milton Keynes
MK8 1GT

Telephone: 01908 036 367
bellway.co.uk

/// football.blaze animator

what3words provides exact locations
so you know exactly where to find
our development.

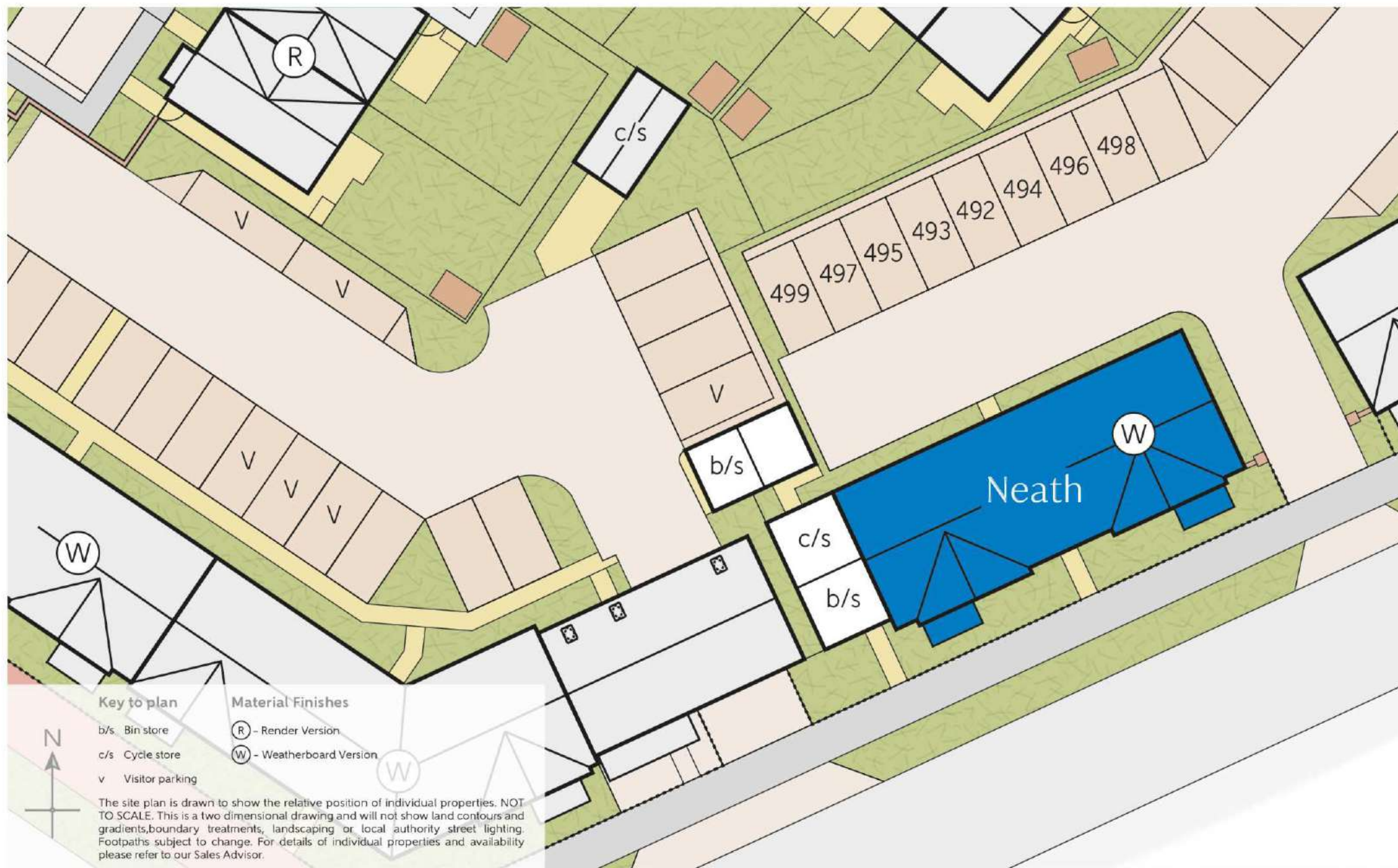


Over 75
YEARS OF QUALITY
SINCE 1946



Bellway abides by the New
Homes Quality Code (NHQC),
an independent industry code
established to champion quality
new homes and deliver better
outcomes for customers.

Bellway

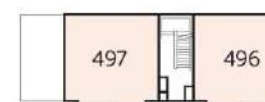


The Grafton - Plots 492, 493, 494, 495, 496, 497, 498 & 499

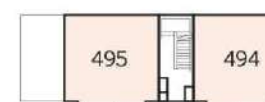
Kitchen	3.21m x 2.81m	10'6" x 7'6"
Living/Dining	3.88m x 3.34m	12'8" x 10'11"
Bedroom	3.06m x 4.17m	10'0" x 13'8"
Bathroom	2.17m x 1.95m	7'1" x 6'4"
Total area	52.2 sq. m.	570 sq. ft.



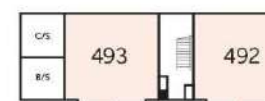
Third Floor



Second Floor



First Floor



Ground Floor

a/c - airing cupboard WS - Wardrobe Space (suggestion only, wardrobe not included) CYL - Hot Water Cylinder

Furniture arrangements are for illustrative purposes only. Items are not included, nor to scale.

The items shown in this key may be subject to change, and positions could vary from those indicated on this floorplan. Please refer to Sales Advisor for details of your selected plot. External finishes and landscaping may vary. Please refer to Sales Advisor for further details. All dimensions are approximate and should not be used for carpet sizes, appliance spaces or furniture. We operate a policy of continuous improvement and individual features such as kitchen and bathroom layouts, doors, windows, garages and elevational treatments may vary from time to time. Consequently these particulars should be treated as general guidance only and do not constitute a contract, part of a contract or a warranty.

Watling Apartments

TWO BEDROOM APARTMENTS



THE
ARTISAN
COLLECTION



Whitehouse Gardens
A development of new homes in Whitehouse, Milton Keynes

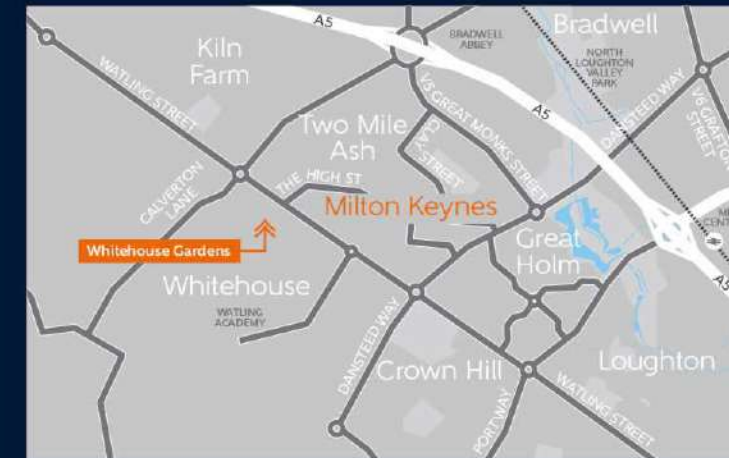
Bellway

Rambouillet Drive
Whitehouse, Milton Keynes
MK8 1GT

Telephone: 01908 036 367
bellway.co.uk

/// football.blaze animator

what3words provides exact locations
so you know exactly where to find
our development.



Over 75
YEARS OF QUALITY
SINCE 1948



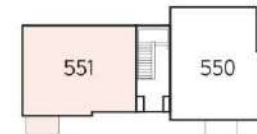
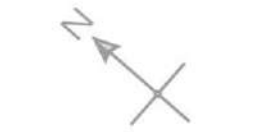
Bellway abides by the New
Homes Quality Code (NHQC),
an independent industry code
established to champion quality
new homes and deliver better
outcomes for customers.

Bellway

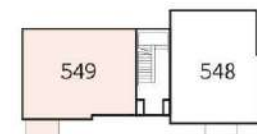


- Key to plan**
- b/s Bin store
 - c/s Cycle store
 - v Visitor parking
- Material Finishes**
- (R) - Render Version
 - (W) - Weatherboard Version

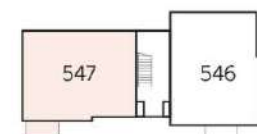
The site plan is drawn to show the relative position of individual properties. NOT TO SCALE. This is a two dimensional drawing and will not show land contours and gradients, boundary treatments, landscaping or local authority street lighting. Footpaths subject to change. For details of individual properties and availability please refer to our Sales Advisor.



Second Floor



First Floor



Ground Floor



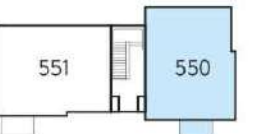
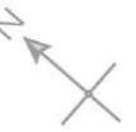
The Milne – Plots 547, 549 & 551

Kitchen/Living/Dining	6.49m x 4.08m	21'3" x 13'4"
Bedroom 1	3.70m x 3.35m	12'1" x 10'11"
Bedroom 2	3.50m x 2.44m	11'5" x 8'0"
Bathroom	2.22m x 1.70m	7'3" x 5'6"
Total area	62.7 sq. m.	675sq. ft.

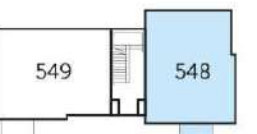
a/c – airing cupboard WS – Wardrobe Space (suggestion only, wardrobe not included) CYL – Hot Water Cylinder

Furniture arrangements are for illustrative purposes only. Items are not included, nor to scale.

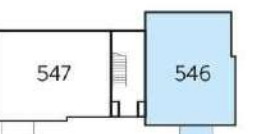
The items shown in this key may be subject to change, and positions could vary from those indicated on this floorplan. Please refer to Sales Advisor for details of your selected plot. External finishes and landscaping may vary. Please refer to Sales Advisor for further details. All dimensions are approximate and should not be used for carpet sizes, appliance spaces or furniture. We operate a policy of continuous improvement and individual features such as kitchen and bathroom layouts, doors, windows, garages and elevational treatments may vary from time to time. Consequently these particulars should be treated as general guidance only and do not constitute a contract, part of a contract or a warranty.



Second Floor



First Floor



Ground Floor



The Brickhill – Plots 546, 548 & 550

Kitchen/Living/Dining	7.10m x 3.33m	23'5" x 10'11"
Bedroom 1	4.42m x 3.12m	14'6" x 10'2"
Bedroom 2	3.55m x 2.22m	11'7" x 7'3"
Bathroom	2.24m x 1.67m	7'4" x 5'7"
Total area	62.6 sq. m.	674 sq. ft.

a/c – airing cupboard WS – Wardrobe Space (suggestion only, wardrobe not included) CYL – Hot Water Cylinder

Furniture arrangements are for illustrative purposes only. Items are not included, nor to scale.

The items shown in this key may be subject to change, and positions could vary from those indicated on this floorplan. Please refer to Sales Advisor for details of your selected plot. External finishes and landscaping may vary. Please refer to Sales Advisor for further details. All dimensions are approximate and should not be used for carpet sizes, appliance spaces or furniture. We operate a policy of continuous improvement and individual features such as kitchen and bathroom layouts, doors, windows, garages and elevational treatments may vary from time to time. Consequently these particulars should be treated as general guidance only and do not constitute a contract, part of a contract or a warranty.

Whaddon Apartments

TWO BEDROOM APARTMENTS



THE
ARTISAN
COLLECTION



Whitehouse Gardens
A development of new homes in Whitehouse, Milton Keynes

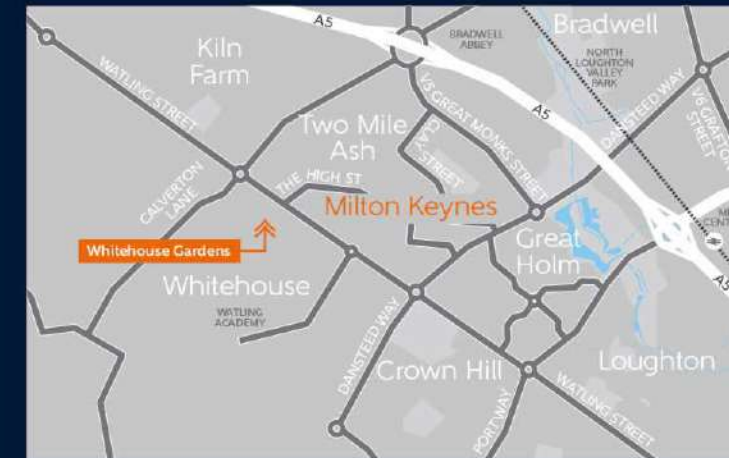
Bellway

Rambouillet Drive
Whitehouse, Milton Keynes
MK8 1GT

Telephone: 01908 036 367
bellway.co.uk

/// football.blaze animator

what3words provides exact locations
so you know exactly where to find
our development.



Over 75
YEARS OF QUALITY
SINCE 1946



Bellway abides by the New
Homes Quality Code (NHQC),
an independent industry code
established to champion quality
new homes and deliver better
outcomes for customers.

Bellway



- Key to plan**
- b/s Bin store
 - c/s Cycle store
 - v Visitor parking
- Material Finishes**
- (R) - Render Version
 - (W) - Weatherboard Version

The site plan is drawn to show the relative position of individual properties. NOT TO SCALE. This is a two dimensional drawing and will not show land contours and gradients, boundary treatments, landscaping or local authority street lighting. Footpaths subject to change. For details of individual properties and availability please refer to our Sales Advisor.



The Emerson - Plots 528, 530, 532 & 534

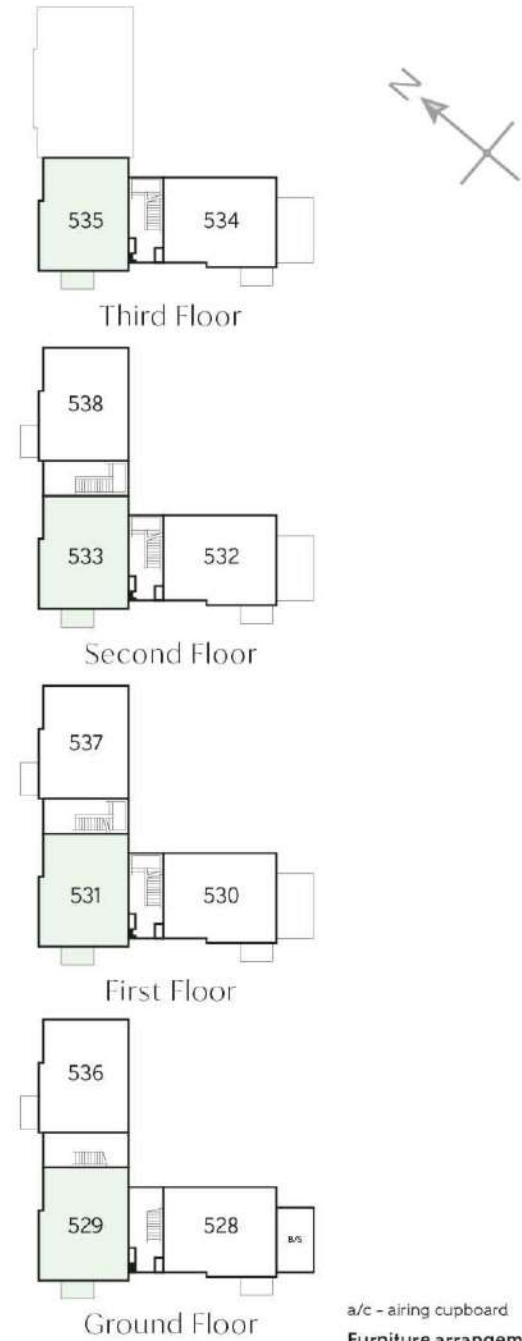
Kitchen/Living/Dining	7.08m x 4.07m	23'2" x 13'4"
Bedroom 1	3.70m x 3.35m	12'1" x 10'11"
Bedroom 2	3.50m x 2.50m	11'5" x 8'2"
Bathroom	2.22m x 1.70m	7'3" x 5'6"
Total area	62.7 sq. m.	675 sq. ft.

a/c - airing cupboard WS - Wardrobe Space (suggestion only, wardrobe not included) CYL - Hot Water Cylinder

Furniture arrangements are for illustrative purposes only. Items are not included, nor to scale.

The items shown in this key may be subject to change, and positions could vary from those indicated on this floorplan. Please refer to Sales Advisor for details of your selected plot. External finishes and landscaping may vary. Please refer to Sales Advisor for further details. All dimensions are approximate and should not be used for carpet sizes, appliance spaces or furniture. We operate a policy of continuous improvement and individual features such as kitchen and bathroom layouts, doors, windows, garages and elevational treatments may vary from time to time. Consequently these particulars should be treated as general guidance only and do not constitute a contract, part of a contract or a warranty.





The Walton - Plots 529, 531, 533 & 535

Kitchen/Living/Dining	7.10m x 3.35m	23'3" x 10'11"
Bedroom 1	4.44m x 3.14m	14'6" x 10'3"
Bedroom 2	3.55m x 2.30m	11'7" x 7'6"
Bathroom	2.22m x 1.95m	7'3" x 6'4"
Total area	62.7 sq. m.	675 sq. ft.

a/c - airing cupboard WS - Wardrobe Space (suggestion only, wardrobe not included) CYL - Hot Water Cylinder

Furniture arrangements are for illustrative purposes only. Items are not included, nor to scale.

The items shown in this key may be subject to change, and positions could vary from those indicated on this floorplan. Please refer to Sales Advisor for details of your selected plot. External finishes and landscaping may vary. Please refer to Sales Advisor for further details. All dimensions are approximate and should not be used for carpet sizes, appliance spaces or furniture. We operate a policy of continuous improvement and individual features such as kitchen and bathroom layouts, doors, windows, garages and elevational treatments may vary from time to time. Consequently these particulars should be treated as general guidance only and do not constitute a contract, part of a contract or a warranty.



The Stanton - Plots 536, 537 & 538

Kitchen/Living/Dining	5.41m x 3.43m	17'9" x 11'3"
Bedroom 1	4.27m x 3.32m	14'0" x 10'10"
Bedroom 2	3.17m x 2.37m	10'4" x 17'9"
Bathroom	2.37m x 1.92m	7'9" x 6'3"
Total area	62.7 sq. m.	675 sq. ft.

a/c - airing cupboard WS - Wardrobe Space (suggestion only, wardrobe not included) CYL - Hot Water Cylinder

Furniture arrangements are for illustrative purposes only. Items are not included, nor to scale.

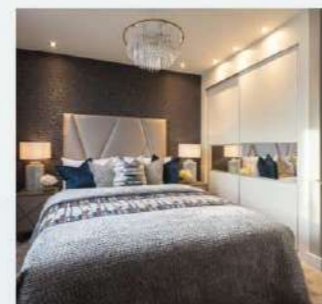
The items shown in this key may be subject to change, and positions could vary from those indicated on this floorplan. Please refer to Sales Advisor for details of your selected plot. External finishes and landscaping may vary. Please refer to Sales Advisor for further details. All dimensions are approximate and should not be used for carpet sizes, appliance spaces or furniture. We operate a policy of continuous improvement and individual features such as kitchen and bathroom layouts, doors, windows, garages and elevational treatments may vary from time to time. Consequently these particulars should be treated as general guidance only and do not constitute a contract, part of a contract or a warranty.



THE
ARTISAN
COLLECTION

Specification

Make your new home as individual as you are with Additions



Every Bellway home comes with high quality fittings as standard, but to add that personal touch you can also choose to upgrade from our range of options to make sure your new home feels distinctly different.

Most important of all, because we recognise that you want your new home to reflect your personal taste from day one, we will make sure that all your Additions choices are expertly fitted and finished by the time you move in.

Choose from our range of Additions options covering:

Kitchens

- Integrated or freestanding washer/dryer
- Integrated fridge/freezer
- Integrated or freestanding dishwasher
- Integrated or freestanding washing machine
- Upgrade to composite worktops
- Double oven
- Upgrade hob
- Integrated microwave

Flooring

- Choose from carpets, vinyl or laminate

Tiling

- Full and half height tiling
- Comprehensive upgrade options

Plumbing

- Heated towel rail

Security

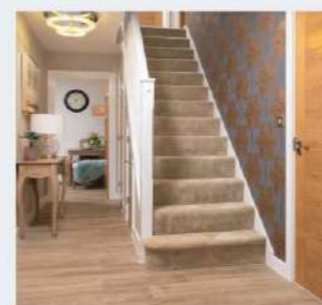
- Intruder alarms
- Security lights

Electrical

- Additional sockets
- Additional switches
- Chrome sockets
- Chrome switches
- Under-unit lighting
- Shaver socket
- Recessed lighting
- BT and TV points

Miscellaneous

- Turf
- Wardrobes



Although we make every effort to ensure that as many Additions choices as possible are available to you, not every development offers all the range shown. Please be aware that orders can only be accepted up to certain stages of the construction process. Therefore we recommend that you consult our Sales Advisor.



		2 Bedroom Homes	3 Bedroom Homes	4 Bedroom Homes	
FINISHES	Entrance Doors	GRP Insulated Door	●	●	●
	Loft Hatch	Loft Hatch - Hinged Drop Down ** ††	●	●	●
	Ceilings	Crown White Matt Emulsion	●	●	●
	Walls	Crown White Matt Emulsion	●	●	●
	Floors	Concrete Ground Floor / Chipboard First Floor	●	●	●
	Window Cills	White Gloss MDF	●	●	●
	Stairs	Timber Stair - White Gloss MDF Strings	●	●	●
	Balusters	White Gloss Stop Chamfered Balusters	●	●	●
	Newel Posts	White Gloss Stop Chamfered Newels	●	●	●
	Newel Caps	White Gloss Flat Top Newel Caps	●	●	●
	Handrail	White Gloss Heavy Duty Handrail	●	●	●
	Skirting	White Gloss 94x14 MDF Grooved & Chamfered	●	●	●
		White Gloss 120x14 MDF Grooved & Chamfered	●	●	●
	Architrave	White Gloss 69x18 MDF Grooved & Chamfered	●	●	●
	Internal Doors	White Pre Finished Vertical Panel Internal Doors	●	●	●
	Ironmongery	Chrome SR100 Door Furniture	●	●	●
	Wardrobes	Hinged Fitted Wardrobes to Bed 1	●	●	●
KITCHEN	Carcass	Premium Grade 18mm thk Colour Matched Carcass	●	●	●
	Frontals	Bellway Band B options &&	●	●	●
		Bellway Band C options &&	●	●	●
	Units	Frontal Matching Table Ends	●	●	●
		Unit Framing	●	●	●
	Worktops	40mm Square Edge Worktops with upstand	●	●	●
	Kitchen Sink	Leisure Eaton Single Bowl SS Sink & Aquamono Tap (inc Sink Liner)	●	●	●
		Leisure Eaton Bowl & Half SS Sink & Aquamono Tap (inc Sink Liner)	●	●	●
		Leisure Atlanta Bowl & Half SS Sink & Aquapace Tap (inc Sink Liner)	●	●	●
	Utility Sink	Leisure Eaton Single Bowl SS Sink & Aquamono Tap (inc Sink Liner)	●	●	●
		Leisure Atlanta Single Bowl SS Sink & Aquapace Tap (inc Sink Liner)	●	●	●
	Appliances Oven	Electrolux Single Oven KOPGH00BX	●	●	●
	Appliances Hob	Electrolux Single Oven KOPGH00TX	●	●	●
		Electrolux 4 Burner Gas Hob KGS6404SX & SS Splashback	●	●	●
	Appliances Extractor	Electrolux 4 Burner Gas Hob KGS6424X & SS Splashback	●	●	●
		Cooker Hood Extractor LFC316X (recirculating)	●	●	●
	Appliances Microwave	Electrolux Combination Microwave KVLFE46TX	●	●	●
Appliances Fridge Freezer	Fridge Freezer Space Only	●	●	●	
	Electrolux 70/30 Fridge Freezer LNS5LE18S	●	●	●	
Appliance Dishwasher	Removeable Unit (inc Feed & Waste) †	●	●	●	
	Electrolux Dishwasher KEAF7200L	●	●	●	
Appliance Washing Machine	Washing Machine Space Only (inc Feed & Waste)	●	●	●	
WET ROOMS	Cloaks - WC	Roca DEBBA WC with Concealed Cistern & PL1 Flush Plate ^^^	●	●	●
	Cloaks - Basin	Roca Wash Hand Basin ^	●	●	●
	Cloaks - Brassware	Bristan PISA Small Basin Chrome Mixer Tap	●	●	●
	Cloaks - Tiling	Band 2 Tiling to WC Boxing, Splashback Tiling to WHB, Box Edge Brushed Trim	●	●	●
		Band 3 Tiling to WC Boxing, Splashback Tiling to WHB, Box Edge Brushed Trim	●	●	●
	Bathroom - WC	ROCA DEBBA WC with Concealed Cistern & PL1 Flush Plate ^^^	●	●	●
	Bathroom - Basin	Roca DEBBA 500 WHB with Full Pedestal &	●	●	●
		Roca DEBBA 550 WHB with Semi Pedestal &	●	●	●
	Bathroom - Bath	Roca OSLO Acrylic Bath & Rigid Bath Panel	●	●	●
	Bathroom - Brassware	Bristan PISA Chrome Bath & Basin Mixer Taps	●	●	●
		Bristan SAIL Chrome Bath & Basin Mixer Taps	●	●	●
	Bathroom - Shower Tray	Mira FLIGHT Low Shower Tray with Mira ELEVATE Enclosure ^	●	●	●
	Bathroom - Shower	Mira MINIMAL Single Thermostatic Shower ###	●	●	●
		Mira MINIMAL Single Thermostatic Shower &&&	●	●	●

		2 Bedroom Homes	3 Bedroom Homes	4 Bedroom Homes	
WET ROOMS	Bathroom - Tiling	1/2 Height Tiling (Band 2) to Wet Walls with Box Edged Brushed Trim *** †††	●	●	●
		1/2 Height Tiling (Band 3) to Wet Walls with Box Edged Brushed Trim *** †††	●	●	●
	En-Suite - WC	ROCA DEBBA WC with Concealed Cistern & PL1 Flush Plate ^^^	●	●	●
	En-Suite - Basin	Roca DEBBA 450 WHB with Full Pedestal	●	●	●
	En-Suite - Brassware	Roca DEBBA 550 WHB with Semi Pedestal	●	●	●
		Bristan PISA Chrome Bath & Basin Mixer Taps	●	●	●
		Bristan SAIL Chrome Bath & Basin Mixer Taps	●	●	●
En-Suite - Shower Tray	Mira FLIGHT Low Shower Tray with Mira ELEVATE Enclosure ^	●	●	●	
En-Suite - Shower	Mira MINIMAL Single Thermostatic Shower †††	●	●	●	
En-Suite - Tiling	1/2 Height Tiling (Band 2) to Wet Walls with Box Edged Brushed Trim †††	●	●	●	
	1/2 Height Tiling (Band 3) to Wet Walls with Box Edged Brushed Trim †††	●	●	●	
MECHANICAL	Boiler	Ideal LOGIC Combination Boiler (Cb) ^	●	●	●
		Ideal LOGIC Boiler & ThermaQ Evocyl HW Cylinder (HOB) ^^	●	●	●
	Controls	Honeywell T6R Dual Zone Smart Thermostat	●	●	●
	Radiators	Stelrad Compact Steel Panel Radiators with Grilles	●	●	●
	Towel Warmers	Flat Chrome to Bathroom & En-Suite 1	●	●	●
	Ventilation	Window Trickle Ventilators with Mechanical Extract Fans (system 3) dMEV	●	●	●
ELECTRICS	Home Working	Dedicated Power, USB & Data points	●	●	●
	Safety - Heat	Heat Detector DET ##	●	●	●
	Safety - Fire	Optical Smoke Detectors LD2 D2 DET	●	●	●
	Safety - Carbon	Mains Wired Carbon Monoxide Detector - Appleby	●	●	●
	Consumer Unit	Wylex Consumer Unit	●	●	●
	Sockets & Switches	Electrum CASA White Fittings	●	●	●
	USB Locations	Kitchen, Living Room & Bedroom 1 ONLY	●	●	●
	Shaver / Toothbrush Point	Bathroom ONLY	●	●	●
		Bathroom & Ensuite 1 Only	●	●	●
	Lighting	Pendant Fitting to Habitable Rooms	●	●	●
	Lighting - Kitchen	White Recessed Spot Lights	●	●	●
	Lighting - Kitchen Under Unit	1st Fix Wiring Only	●	●	●
	Lighting - Bathroom & En-Suites	White Recessed Spot Lights	●	●	●
	Lighting - External	External Light Clifton Brushed Steel Up/Down (Front & Rear)	●	●	●
	Communications - TV	TV Point to Living Room, Family, Bedroom 1 & Study	●	●	●
	Communications - Voice	Telephone Point to Living Room	●	●	●
	Communications - Data	Cat 6 Network Point to Living Room & Study	●	●	●
Broadband	Ultrafast Fibre Connectivity (Openreach, Virgin Media, Hyperoptic) ††	●	●	●	
EXTERNALS & MISC	Ecological	Hedgehog Highway fencing adaption	●	●	●
	Garages Electrics	Light & Power Point to incurtilage Garages ~~~	●	●	●
	Build Method	Masonry ~~~	●	●	●
	Maintenance	External Tap	●	●	●
	Number Plaque	Artisan Number Plaque	●	●	●
	Footpath & Patio	Grey PCC Flags 600x600x32's	●	●	●
	Garages	Steel Panel Up & Over Canopy Garage Door ~~~	●	●	●
	Drives	Bitmac Black ~	●	●	●
	Landscaping - Front	Medallion Turf & Landscape Planting ~~~~	●	●	●
	Landscaping - Rear	Rotovated Topsoil ~~~~	●	●	●
	Renewables	Photovoltaic Array ~~~	●	●	●
EV Charging Terminal	Pod Point 7kw Solo Universal * †	●	●	●	

- * electrical infrastructure upgrade maybe required
- ** fire rated as necessary
- *** full height around bath where shower provided as standard
- † mounting position is plot specific, refer to site layout
- †† where layout allows
- ††† full height to shower enclosure
- ‡ at build stage
- ‡‡ consult with sales executive for specific development details
- ‡‡‡ flow regulator fitted to bath mixer if serving single thermostatic shower & fed via combination boiler
- ^ housetype dependent - liaise with sales executive
- ^^ housetype dependent on particular 4 bed housetypes - liaise with Sales Advisor
- ^^^ inc soft close mechanism seat
- # inc soft close mechanism seat on 4 & 5 Bedroom Homes ONLY
- ## kitchen only
- ### over bath ONLY incorporating MIRA bath screen 11863.004 where no shower elsewhere in dwelling
- ~ plot dependent
- ~~ plot specific, refer site layout
- ~~~ refer site landscape layout
- & semi recessed basin if AD M4(ii) applicable
- && soft close mechanism to doors & drawers
- &&& where provision of shower tray allows

Information correct at time of going to print. In the event of product discontinuation or issues with stock availability Bellway will always fit a suitable alternative.



THE
ARTISAN
COLLECTION

Apartment Specification



Make your new home as individual as you are with Additions

Every Bellway home comes with high quality fittings as standard, but to add that personal touch you can also choose to upgrade from our range of options to make sure your new home feels distinctly different.

Most important of all, because we recognise that you want your new home to reflect your personal taste from day one, we will make sure that all your Additions choices are expertly fitted and finished by the time you move in.

Choose from our range of Additions options covering:

Kitchens

- Integrated or freestanding washer/dryer
- Integrated fridge/freezer
- Integrated or freestanding dishwasher
- Integrated or freestanding washing machine
- Upgrade to composite worktops
- Double oven
- Upgrade hob
- Integrated microwave

Flooring

- Choose from carpets, vinyl or laminate

Tiling

- Full and half height tiling
- Comprehensive upgrade options

Plumbing

- Heated towel rail

Security

- Intruder alarms
- Security lights

Electrical

- Additional sockets
- Additional switches
- Chrome sockets
- Chrome switches
- Under-unit lighting
- Shaver socket
- Recessed lighting
- BT and TV points

Miscellaneous

- Turf
- Wardrobes

Although we make every effort to ensure that as many Additions choices as possible are available to you, not every development offers all the range shown. Please be aware that orders can only be accepted up to certain stages of the construction process. Therefore we recommend that you consult our Sales Advisor.



Specification

1 Bedroom Apartments

2 Bedroom Apartments

FINISHES			
Entrance Doors	Pre Finished Fire Rated Solid Core Door	•	•
Ceilings	Crown White Matt Emulsion	•	•
Walls	Crown White Matt Emulsion	•	•
Window Cills	White Gloss MDF	•	•
Skirting	White Gloss 94x14 MDF Grooved & Chamfered	•	•
Architrave	White Gloss 69x18 MDF Grooved & Chamfered	•	•
Internal Doors	White Pre Finished Vertical Panel Internal Doors	•	•
Ironmongery	Chrome SR100 Door Furniture	•	•

KITCHEN			
Carcass	Premium Grade 18mm thk Colour Matched Carcass	•	•
Frontals	Bellway Band B options ^^	•	•
Units	Frontal Matching Table Ends	•	•
Worktops	40mm Square Edge Worktops with upstand	•	•
Kitchen Sink	Leisure Linear Bowl & Half SS Sink & TCAF3 Tap (inc Sink Liner)	•	•
Appliances Oven	Zanussi Single Oven ZOB343X	•	•
Appliances Hob	Zanussi Induction Hob ZITN643K & SS Splashback	•	•
Appliances Extractor	Cooker Hood Extractor LFC316X (recirculating)	•	•
Appliances Fridge Freezer	Fridge Freezer Space Only	•	•
Appliance Dishwasher	Removeable Unit (inc Feed & Waste) **	•	•
Appliance Washing Machine	Washing Machine Space within A/C (inc Feed & Waste)	•	•

WET ROOMS			
Bathroom - WC	ROCA DEBBA WC with Concealed Cistern & PL1 Flush Plate ‡	•	•
Bathroom - Basin	Roca Debba 520 Semi Recessed WHB no Pedestal M4(2)	•	•
Bathroom - Bath	Roca OSLO Acrylic Bath & Rigid Bath Panel	•	•
Bathroom - Brassware	Bristan PISA Chrome Bath & Basin Mixer Taps	•	•
Bathroom - Shower	Over Bath Mira MINIMAL Single Thermostatic Shower †††	•	•
Bathroom - Tiling	1/2 Height Tiling (Band 2) to Wet Walls with Box Edged Brushed Trim * †	•	•
En-Suite - WC	ROCA DEBBA WC with Concealed Cistern & PL1 Flush Plate ‡	•	•
En-Suite - Basin	Roca Debba 520 Semi Recessed WHB no Pedestal M4(2)	•	•
En-Suite - Brassware	Bristan PISA Chrome Basin Mixer Taps	•	•
En-Suite - Shower Tray	Mira FLIGHT Low Shower Tray with Mira ELEVATE Enclosure ††	•	•
En-Suite - Shower	Mira MINIMAL Single Thermostatic Shower ***	•	•
En-Suite - Tiling	1/2 Height Tiling (Band 2) to Wet Walls with Box Edged Brushed Trim †	•	•

1 Bedroom Apartments

2 Bedroom Apartments

MECHANICAL			
Hot Water	Hot Water Heat Pump Cylinder	•	•
Controls	Dimplex Panel Heaters Controls	•	•
Radiators	Electric Panel Heaters	•	•
Towel Warmers	Flat Chrome to Bathroom (electric)	•	•
Ventilation	Mechanical Extract Fans (system 3)	•	•

ELECTRICS			
Home Working	Dedicated Power, USB & Data Points	•	•
Safety - Heat	Heat Detector DET ‡‡	•	•
Safety - Fire	Optical Smoke Detectors LD2 D2 APP	•	•
Consumer Unit	Wylex Consumer Unit	•	•
Sockets & Switches	Electrium CASA White Fittings	•	•
USB Locations	Kitchen, Living Room & Bedroom 1 ONLY	•	•
Shaver / Toothbrush Point	Bathroom ONLY	•	•
Lighting	Pendant Fitting to Habitable Rooms	•	•
Lighting - Kitchen Under Unit	1st Fix Wiring Only	•	•
Lighting - Bathroom & En-Suites	White Recessed Spot Lights	•	•
Communications - TV	TV Point to Living Room & Bedroom 1	•	•
Communications - Voice	Telephone Point to Living Room	•	•
Communications - Data	Cat 6 Network Point to Living Room & Bedroom 1	•	•
Broadband	Ultrafast Fibre Connectivity Openreach	•	•

EXTERNALS & MISC			
Shared Parking Areas	Bitmac Black †††	•	•
Balcony	Balcony ^^	•	•
Build Method	Masonry ^	•	•

* full height around bath where shower provided as standard

** at build stage

*** flow regulator fitted to bath mixer if serving single thermostatic shower & fed via combination boiler

† full height to shower enclosure

†† housetype dependent - liaise with sales executive

††† inc MIRA bath screen 1.1863.004

‡ inc soft close mechanism seat

‡‡ kitchen only

‡‡‡ plot dependent

^ plot specific, refer site layout

^^ soft close mechanism to doors & drawers

^^^ where shown on layouts

Information correct at time of going to print. In the event of product discontinuation or issues with stock availability Bellway will always fit a suitable alternative.

10 year  warranty