



THE

WATERMILL

FOUR BEDROOM HOME

PLOTS 35, 40 & 64



Brought to you by

Bellway

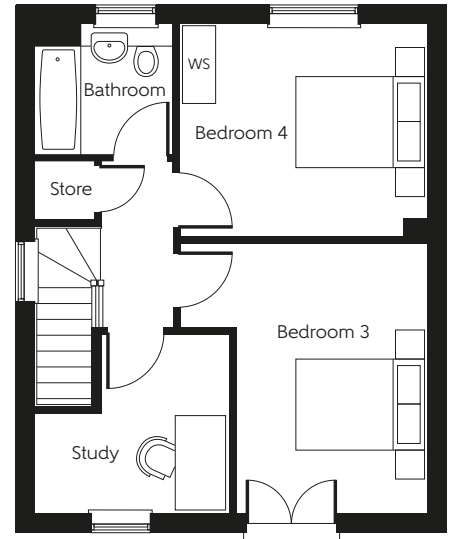
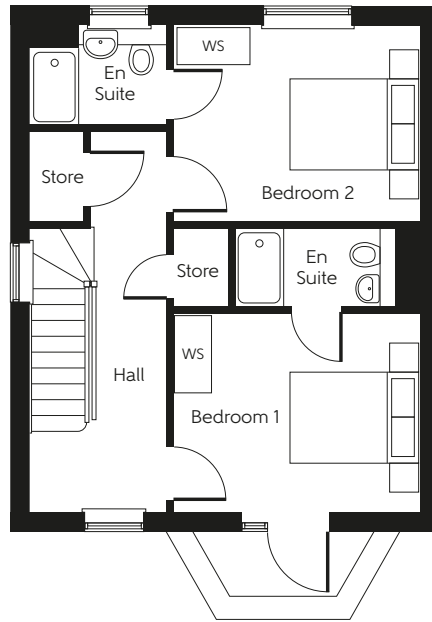
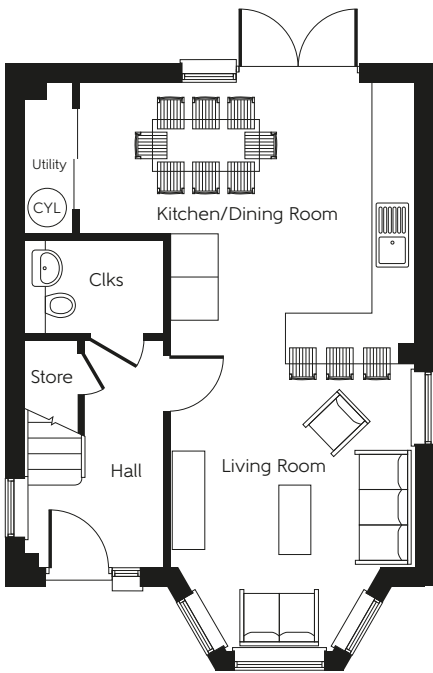


LATIMER
by Clarion Housing Group



THE WATERMILL

FOUR BEDROOM HOME
PLOTS 35, 40 & 64



Ground floor

Kitchen/Dining Room

5.187m x 4.341m 17'0" x 14'3"

Living Room

4.433m x 3.744m 14'7" x 12'3"
(including bay window) (including bay window)

First floor

Bedroom 1

3.850m x 3.138m 12'8" x 10'4"

Bedroom 2

3.850m x 3.081m 12'8" x 10'1"

Second floor

Bedroom 3

4.199m x 2.948m 13'9" x 9'8"

Bedroom 4

3.824m x 3.307m 12'7" x 10'10"

Study

3.050m x 2.904m 10'0" x 9'6"

Total Area

139.1 sq.m.

1497 sq.ft.

Clks - Cloakroom (CYL) - Hot water Cylinder WS - Wardrobe Space (suggestion only, wardrobe not included)

Furniture arrangements are for illustrative purposes only. Items are not included, nor to scale.

The items shown in this key may be subject to change, and positions could vary from those indicated on this floorplan. Please refer to Sales Advisor for details of your selected plot. Computer generated image shown overleaf. External finishes, landscaping and configuration may vary from plot to plot. Please refer to Sales Advisor for further details. All dimensions are approximate and should not be used for carpet sizes, appliance spaces or furniture. We operate a policy of continuous improvement and individual features such as kitchen and bathroom layouts, doors, windows, garages and elevational treatments may vary from time to time. Consequently these particulars should be treated as general guidance only and do not constitute a contract, part of a contract or a warranty.

Brought to you by

Bellway

LATIMER
by Clarion Housing Group