

Liscio

TWO BEDROOM APARTMENTS



THE
ARTISAN
COLLECTION



Modello
A development of new homes in Gateshead

Bellway

Development layout





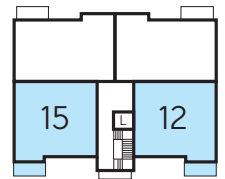
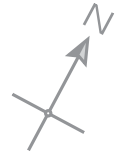
The Lewis - Plots 3, 7, 11 & 15

Kitchen/Living/Dining	2.89m x 8.48m	9'6" x 27'10"
Bedroom 1	2.83m x 4.30m	9'3" x 14'1"
Bedroom 1 En Suite	1.65m x 2.20m	5'5" x 7'3"
Bedroom 2	2.67m x 4.62m	8'9" x 15'2"
Bathroom	2.20m x 2.05m	7'3" x 6'9"
Total area	70.70 sq. m.	761 sq. ft.

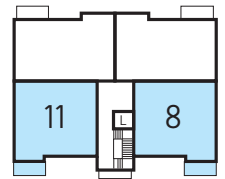


The Lewis - Plots 4, 8 & 12

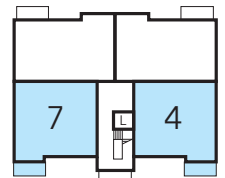
Kitchen/Living/Dining	2.89m x 8.48m	9'6" x 27'10"
Bedroom 1	2.83m x 4.30m	9'3" x 14'1"
Bedroom 1 En Suite	1.65m x 2.20m	5'5" x 7'3"
Bedroom 2	2.67m x 4.62m	8'9" x 15'2"
Bathroom	2.20m x 2.05m	7'3" x 6'9"
Total area	70.70 sq. m.	761 sq. ft.



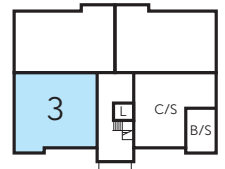
Third Floor



Second Floor



First Floor



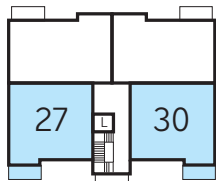
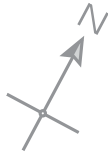
Ground Floor

a/c - airing cupboard WS - Wardrobe Space (suggestion only, wardrobe not included)

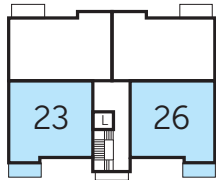
Furniture arrangements are for illustrative purposes only. Items are not included, nor to scale.

The items shown in this key may be subject to change, and positions could vary from those indicated on this floorplan. Please refer to Sales Advisor for details of your selected plot. External finishes and landscaping may vary. Please refer to Sales Advisor for further details. All dimensions are approximate and should not be used for carpet sizes, appliance spaces or furniture. We operate a policy of continuous improvement and individual features such as kitchen and bathroom layouts, doors, windows, garages and elevational treatments may vary from time to time. Consequently these particulars should be treated as general guidance only and do not constitute a contract, part of a contract or a warranty.

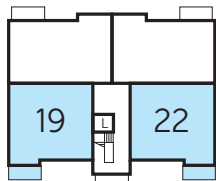
Floorplans



Third Floor



Second Floor



First Floor



Ground Floor



The Lewis - Plots 19, 23 & 27

Kitchen/Living/Dining	2.89m x 8.48m	9'6" x 27'10"
Bedroom 1	2.83m x 4.30m	9'3" x 14'1"
Bedroom 1 En Suite	1.65m x 2.20m	5'5" x 7'3"
Bedroom 2	2.67m x 4.62m	8'9" x 15'2"
Bathroom	2.20m x 2.05m	7'3" x 6'9"
Total area	70.70 sq. m.	761 sq. ft.



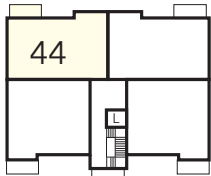
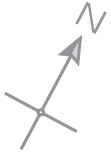
The Lewis - Plots 18, 22, 26 & 30

Kitchen/Living/Dining	2.89m x 8.48m	9'6" x 27'10"
Bedroom 1	2.83m x 4.30m	9'3" x 14'1"
Bedroom 1 En Suite	1.65m x 2.20m	5'5" x 7'3"
Bedroom 2	2.67m x 4.62m	8'9" x 15'2"
Bathroom	2.20m x 2.05m	7'3" x 6'9"
Total area	70.70 sq. m.	761 sq. ft.

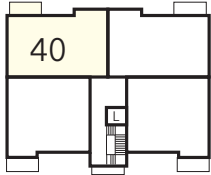
a/c - airing cupboard WS - Wardrobe Space (suggestion only, wardrobe not included)

Furniture arrangements are for illustrative purposes only. Items are not included, nor to scale.

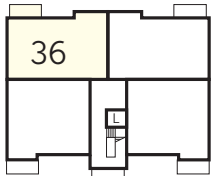
The items shown in this key may be subject to change, and positions could vary from those indicated on this floorplan. Please refer to Sales Advisor for details of your selected plot. External finishes and landscaping may vary. Please refer to Sales Advisor for further details. All dimensions are approximate and should not be used for carpet sizes, appliance spaces or furniture. We operate a policy of continuous improvement and individual features such as kitchen and bathroom layouts, doors, windows, garages and elevational treatments may vary from time to time. Consequently these particulars should be treated as general guidance only and do not constitute a contract, part of a contract or a warranty.



Third Floor



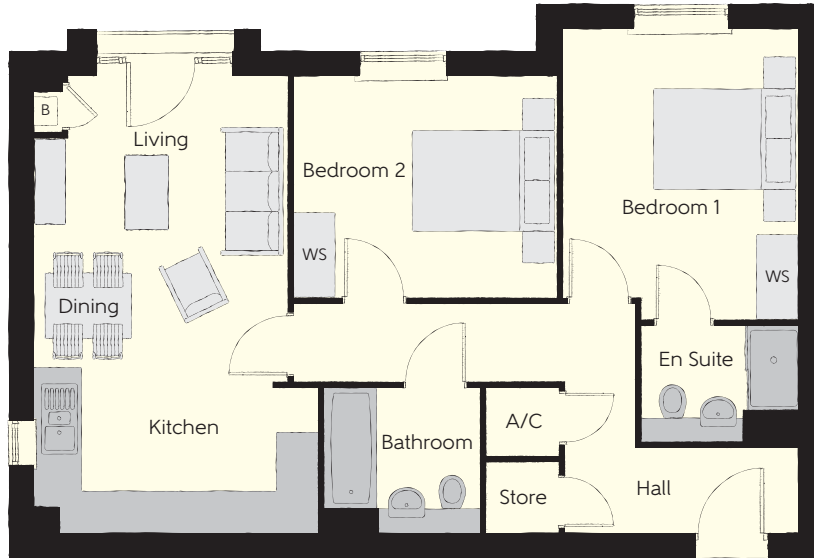
Second Floor



First Floor



Ground Floor



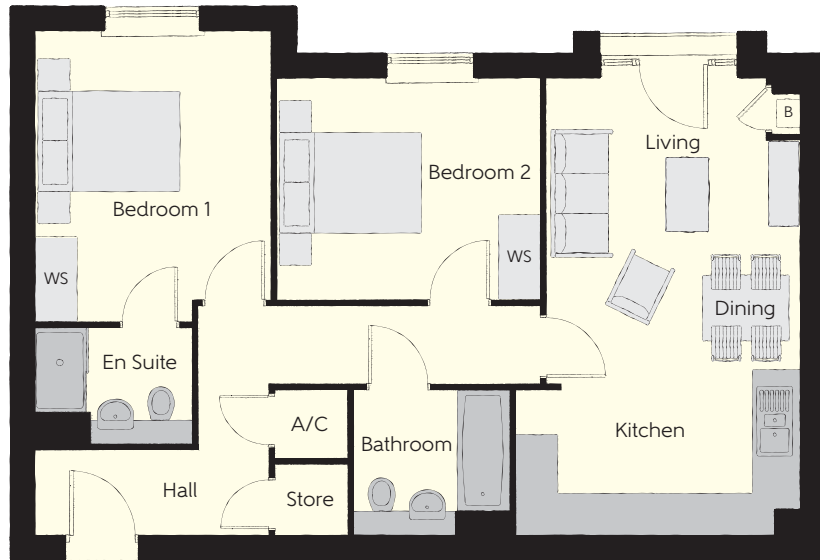
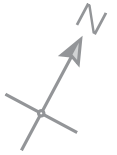
The Filbert – Plots 2, 6, 10 & 14

Kitchen/Living/Dining	4.00m x 6.40m	13'1" x 21'0"
Bedroom 1	3.31m x 4.07m	10'10" x 13'4"
Bedroom 1 En Suite	2.20m x 1.65m	7'3" x 5'5"
Bedroom 2	3.72m x 3.10m	12'2" x 10'2"
Bathroom	2.20m x 2.05m	7'3" x 6'9"
Total area	70.88 sq. m.	763 sq. ft.

a/c - airing cupboard WS - Wardrobe Space (suggestion only, wardrobe not included)

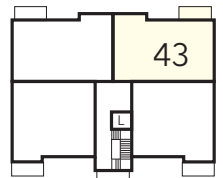
Furniture arrangements are for illustrative purposes only. Items are not included, nor to scale.

The items shown in this key may be subject to change, and positions could vary from those indicated on this floorplan. Please refer to Sales Advisor for details of your selected plot. External finishes and landscaping may vary. Please refer to Sales Advisor for further details. All dimensions are approximate and should not be used for carpet sizes, appliance spaces or furniture. We operate a policy of continuous improvement and individual features such as kitchen and bathroom layouts, doors, windows, garages and elevational treatments may vary from time to time. Consequently these particulars should be treated as general guidance only and do not constitute a contract, part of a contract or a warranty.

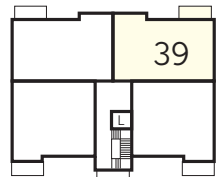


The Filbert – Plots 1, 5, 9 & 13

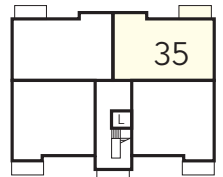
Kitchen/Living/Dining	4.00m x 6.40m	13'1" x 21'0"
Bedroom 1	3.31m x 4.07m	10'10" x 13'4"
Bedroom 1 En Suite	2.20m x 1.65m	7'3" x 5'5"
Bedroom 2	3.72m x 3.10m	12'2" x 10'2"
Bathroom	2.20m x 2.05m	7'3" x 6'9"
Total area	70.88 sq. m.	763 sq. ft.



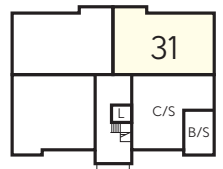
Third Floor



Second Floor



First Floor

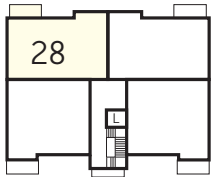
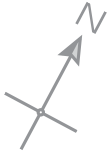


Ground Floor

a/c - airing cupboard WS - Wardrobe Space (suggestion only, wardrobe not included)

Furniture arrangements are for illustrative purposes only. Items are not included, nor to scale.

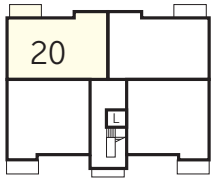
The items shown in this key may be subject to change, and positions could vary from those indicated on this floorplan. Please refer to Sales Advisor for details of your selected plot. External finishes and landscaping may vary. Please refer to Sales Advisor for further details. All dimensions are approximate and should not be used for carpet sizes, appliance spaces or furniture. We operate a policy of continuous improvement and individual features such as kitchen and bathroom layouts, doors, windows, garages and elevational treatments may vary from time to time. Consequently these particulars should be treated as general guidance only and do not constitute a contract, part of a contract or a warranty.



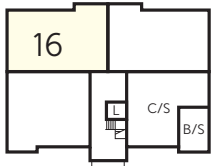
Third Floor



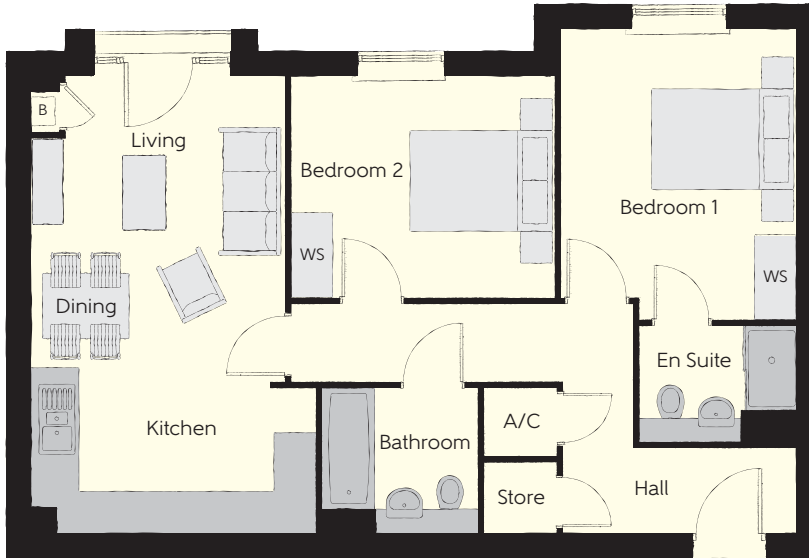
Second Floor



First Floor



Ground Floor



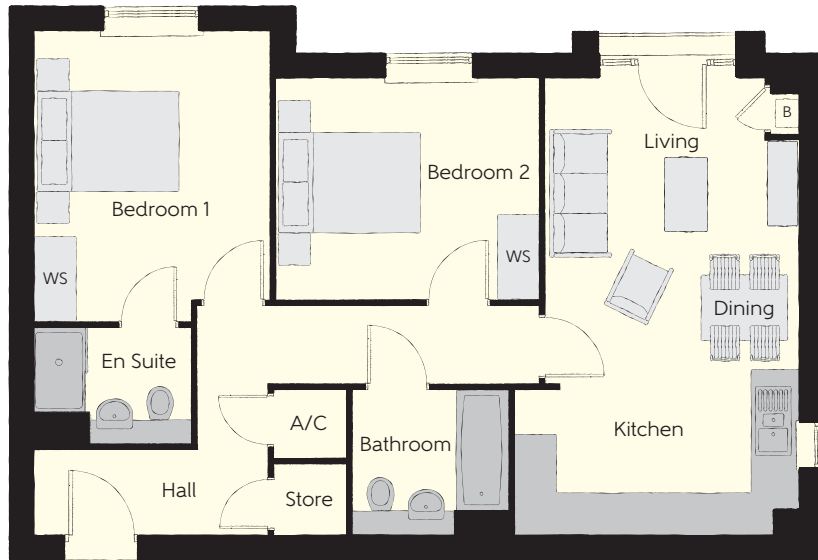
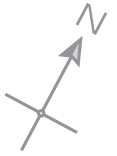
The Filbert – Plots 16, 20, 24 & 28

Kitchen/Living/Dining	4.00m x 6.40m	13'1" x 21'0"
Bedroom 1	3.31m x 4.07m	10'10" x 13'4"
Bedroom 1 En Suite	2.20m x 1.65m	7'3" x 5'5"
Bedroom 2	3.72m x 3.10m	12'2" x 10'2"
Bathroom	2.20m x 2.05m	7'3" x 6'9"
Total area	70.88 sq. m.	763 sq. ft.

a/c - airing cupboard WS - Wardrobe Space (suggestion only, wardrobe not included)

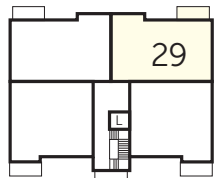
Furniture arrangements are for illustrative purposes only. Items are not included, nor to scale.

The items shown in this key may be subject to change, and positions could vary from those indicated on this floorplan. Please refer to Sales Advisor for details of your selected plot. External finishes and landscaping may vary. Please refer to Sales Advisor for further details. All dimensions are approximate and should not be used for carpet sizes, appliance spaces or furniture. We operate a policy of continuous improvement and individual features such as kitchen and bathroom layouts, doors, windows, garages and elevational treatments may vary from time to time. Consequently these particulars should be treated as general guidance only and do not constitute a contract, part of a contract or a warranty.

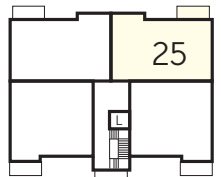


The Filbert – Plots 17, 21, 25 & 29

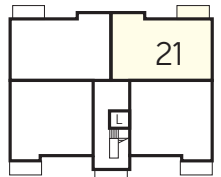
Kitchen/Living/Dining	4.00m x 6.40m	13'1" x 21'0"
Bedroom 1	3.31m x 4.07m	10'10" x 13'4"
Bedroom 1 En Suite	2.20m x 1.65m	7'3" x 5'5"
Bedroom 2	3.72m x 3.10m	12'2" x 10'2"
Bathroom	2.20m x 2.05m	7'3" x 6'9"
Total area	70.88 sq. m.	763 sq. ft.



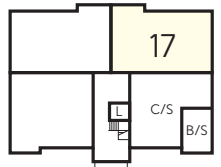
Third Floor



Second Floor



First Floor



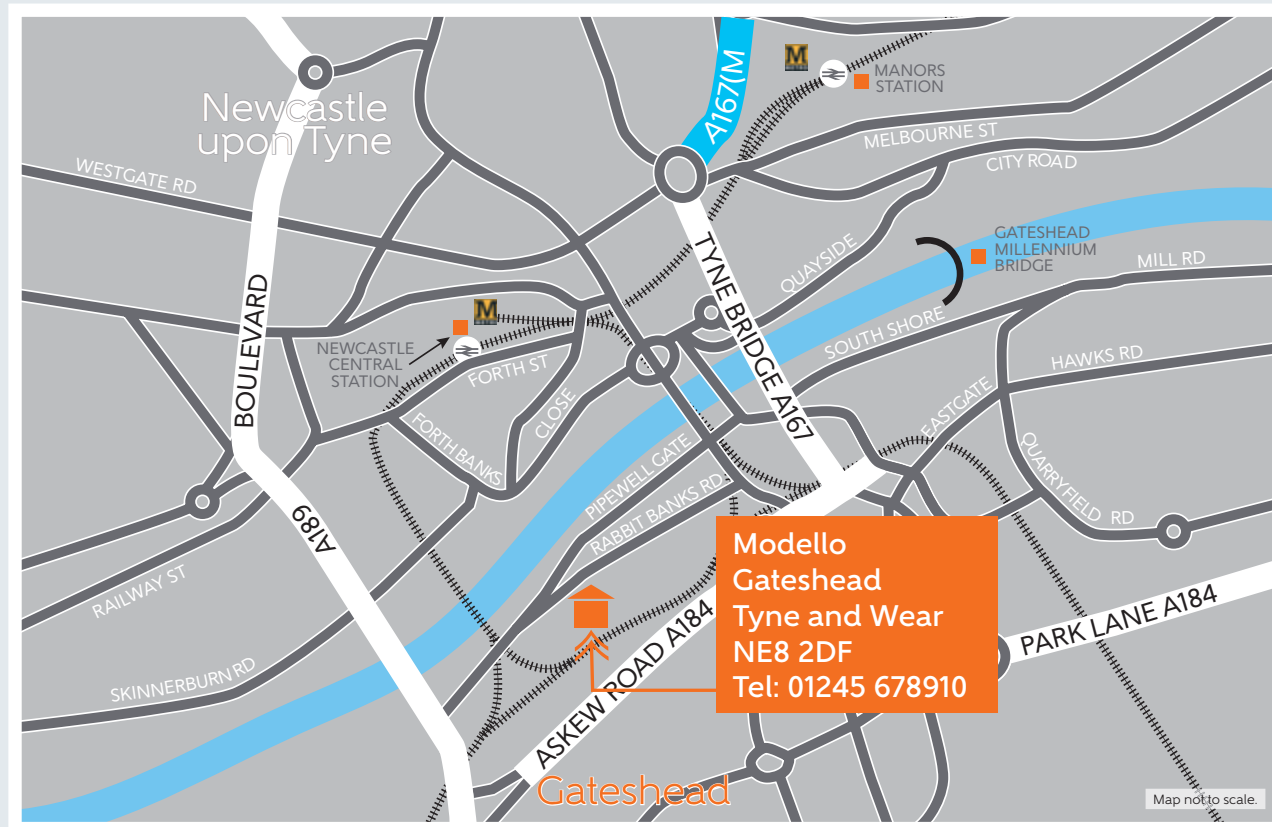
Ground Floor

a/c - airing cupboard WS - Wardrobe Space (suggestion only, wardrobe not included)

Furniture arrangements are for illustrative purposes only. Items are not included, nor to scale.

The items shown in this key may be subject to change, and positions could vary from those indicated on this floorplan. Please refer to Sales Advisor for details of your selected plot. External finishes and landscaping may vary. Please refer to Sales Advisor for further details. All dimensions are approximate and should not be used for carpet sizes, appliance spaces or furniture. We operate a policy of continuous improvement and individual features such as kitchen and bathroom layouts, doors, windows, garages and elevational treatments may vary from time to time. Consequently these particulars should be treated as general guidance only and do not constitute a contract, part of a contract or a warranty.

How to find us



Bellway Homes Limited (North East Division)
Bellway House Kings Park, Kingsway N, Gateshead NE11 0JH
Telephone: 0191 482 8800 bellway.co.uk