



THE

COPPERSMITH

THREE BEDROOM HOME

PLOTS 36, 37, 38 & 39



Brought to you by

Bellway



LATIMER
by Clarion Housing Group

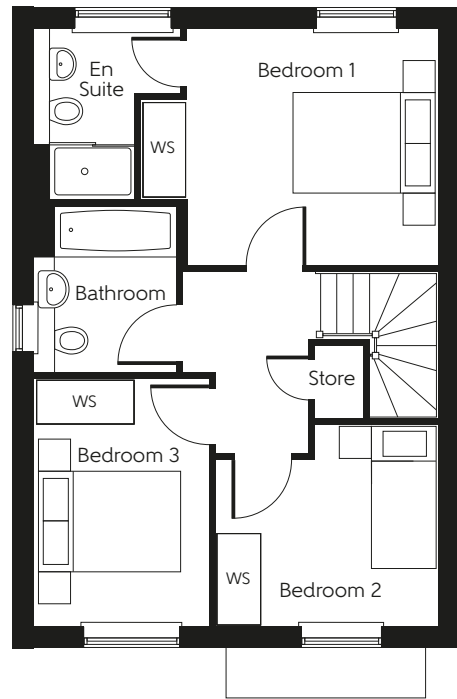
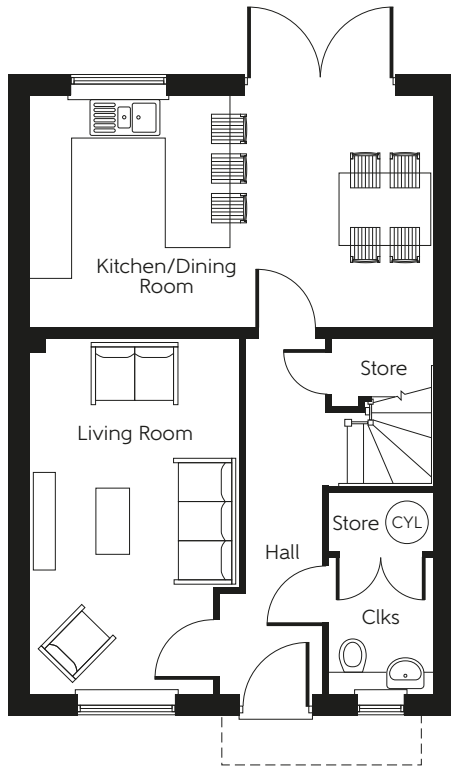


THE

COPPERSMITH

THREE BEDROOM HOME

PLOTS 36, 37, 38 & 39



Ground floor

Kitchen/Dining Room	5.635m x 3.237m	18'6" x 10'7"
Living Room	4.938m x 2.924m	16'2" x 9'7"

First floor

Bedroom 1	3.507m x 3.287m	11'6" x 10'9"
Bedroom 2	3.100m x 2.798m	10'2" x 9'2"
Bedroom 3	3.443m x 2.422m	11'4" x 7'11"

Total Area	93.9 sq.m.	1011 sq.ft.
-------------------	-------------------	--------------------

Clks - Cloakroom (CYL) - Hot water Cylinder WS - Wardrobe Space (suggestion only, wardrobe not included)

Furniture arrangements are for illustrative purposes only. Items are not included, nor to scale.

The items shown in this key may be subject to change, and positions could vary from those indicated on this floorplan. Please refer to Sales Advisor for details of your selected plot. Computer generated image shown overleaf. External finishes, landscaping and configuration may vary from plot to plot. Please refer to Sales Advisor for further details. All dimensions are approximate and should not be used for carpet sizes, appliance spaces or furniture. We operate a policy of continuous improvement and individual features such as kitchen and bathroom layouts, doors, windows, garages and elevational treatments may vary from time to time. Consequently these particulars should be treated as general guidance only and do not constitute a contract, part of a contract or a warranty.

Brought to you by

