

Housetypes

The Padstow

Plot numbers 142, 143, 178, 179, 182, 183 & 194

Summary points

5 key points (minimum)
ie



House

✓ Front-facing kitchen



2 Bathrooms

✓ Living and dining room with French doors to garden



2 Bedrooms

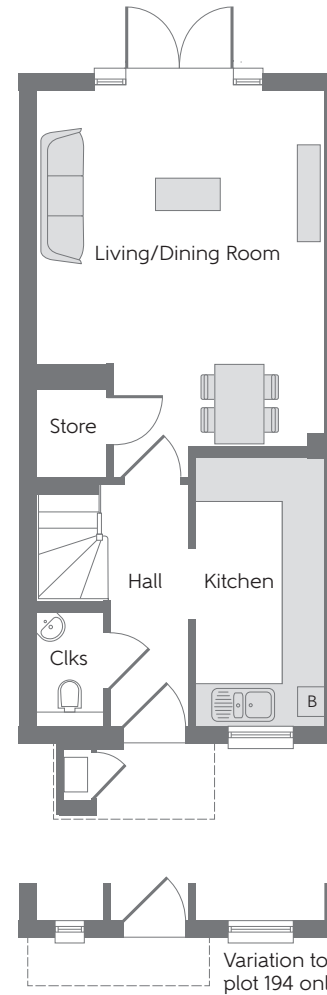
✓ Two double bedrooms

✓ Modern family bathroom

✓ En suite to bedroom 1

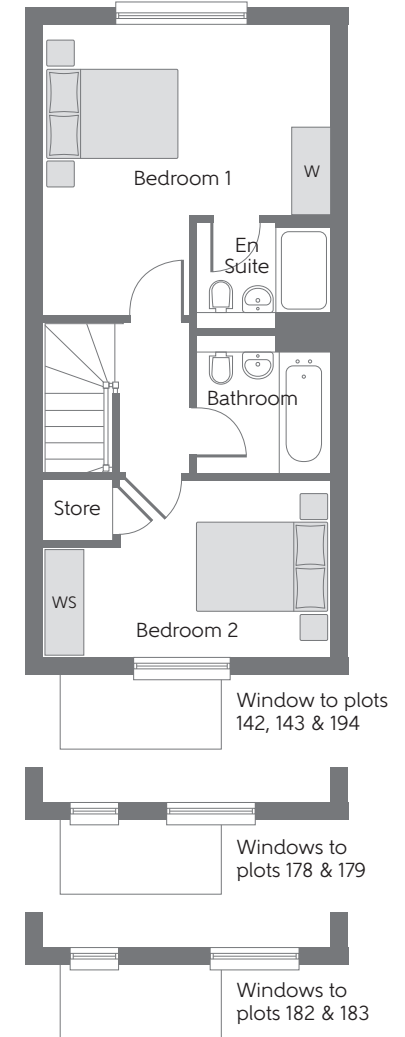


769 Sq.ft.



GROUND FLOOR

| | | |
|--------------------|------------------------|------------------------|
| Kitchen | 3.72m x 1.80m | 12'2" x 5'11" |
| Living/Dining Room | 5.34m x 3.99m (max) | 17'6" x 13'1" (max) |
| Cloakroom | 1.60m x 0.94m | 5'3" x 3'1" |



FIRST FLOOR

| | | |
|--------------------|------------------------|------------------------|
| Bedroom 1 | 4.04m x 3.99m (max) | 13'3" x 13'1" (max) |
| Bedroom 1 En Suite | 1.86m x 1.48m | 6'1" x 4'10" |
| Bedroom 2 | 3.99m x 2.47m (max) | 13'1" x 8'1" (max) |
| Bathroom | 1.92m x 1.86m | 6'3" x 6'1" |

Housetypes

The Charlestown

Plot numbers 146, 147, 150, 151, 154, 155, 158, 159, 162, 163, 166, 167, 170, 171, 174 & 175

Summary points

5 key points (minimum)
ie



House

✓ Front-facing kitchen



2 Bathrooms

✓ Living and dining room with French doors to garden



2 Bedrooms

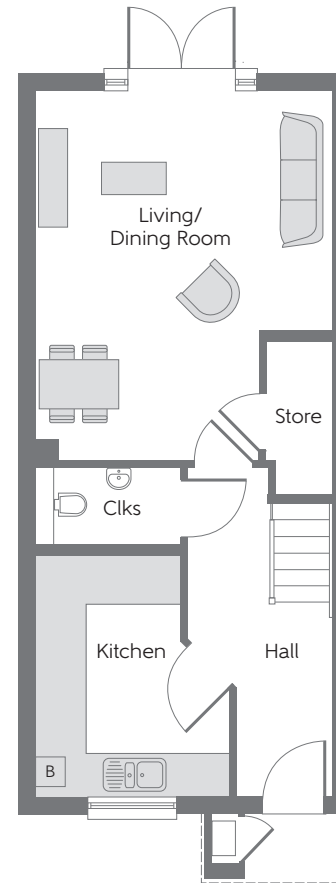
✓ Two double bedrooms

✓ Modern family bathroom

✓ En suite to bedroom 1

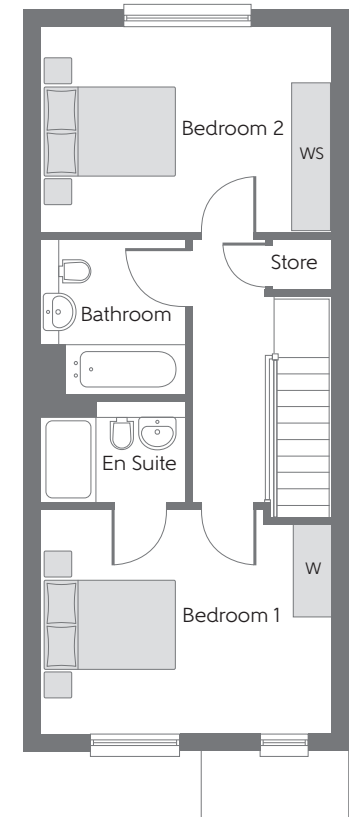


876 Sq.ft.



GROUND FLOOR

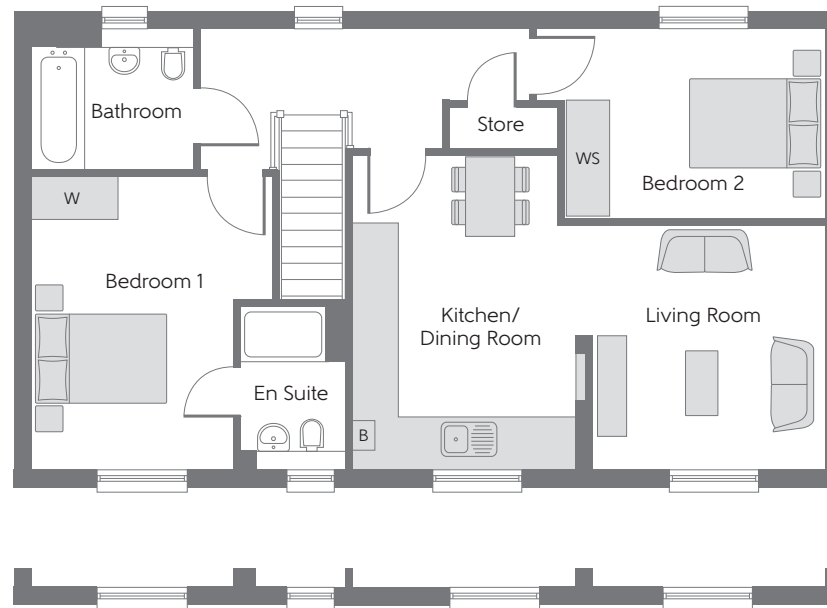
| | | |
|--------------------|------------------------------|-------------------------------|
| Kitchen | 3.35m x 2.65m (max) (max) | 11'0" x 8'8" (max) (max) |
| Living/Dining Room | 5.12m x 4.08m (max) (max) | 16'10" x 13'5" (max) (max) |
| Cloakroom | 1.99m x 1.09m | 6'6" x 3'7" |



FIRST FLOOR

| | | |
|--------------------|------------------------------|------------------------------|
| Bedroom 1 | 4.08m x 3.11m (max) (max) | 13'5" x 10'2" (max) (max) |
| Bedroom 1 En Suite | 2.00m x 1.41m | 6'7" x 4'8" |
| Bedroom 2 | 4.08m x 2.85m | 13'5" x 9'4" |
| Bathroom | 2.16m x 2.00m | 7'1" x 6'7" |

Housetypes



First Floor

Windows to plots 203 & 212

The Southwold

Plot numbers 129, 136, 203 & 212

Summary points

5 key points (minimum)

ie



Coach House



Open-plan kitchen, living, and dining room



2 Bathrooms



Two double bedrooms



2 Bedrooms



Modern family bathroom



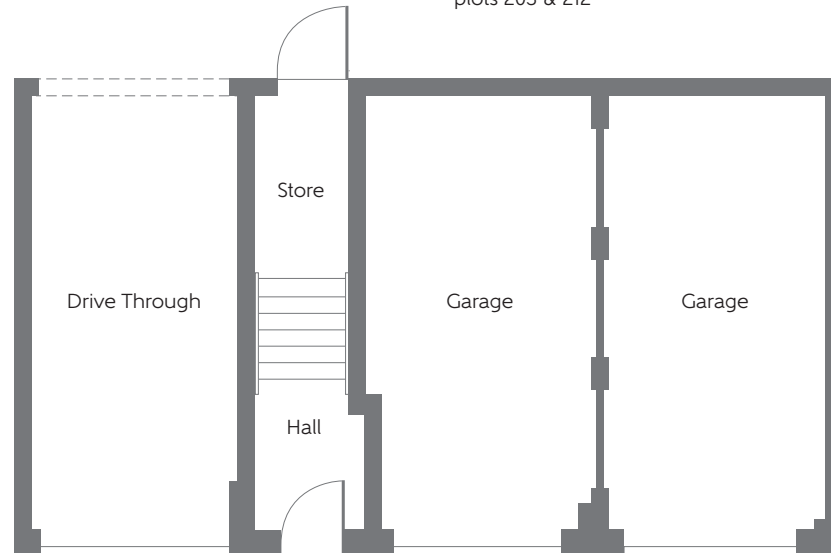
En suite to bedroom 1



Garage



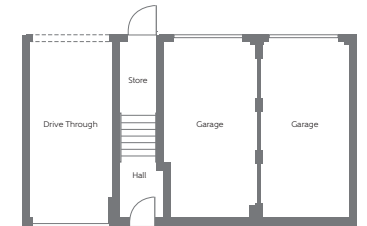
777 Sq.ft.



Plots 129 & 136

Ground Floor

Important note: The Southwold is allocated a single garage. Please refer to the Sales Advisor for further information.



Plots 203 & 212

FIRST FLOOR

| | | |
|---------------------|------------------------------|-------------------------------|
| Kitchen/Dining Room | 4.28m x 3.08m (max) (max) | 14'0" x 10'1" (max) (max) |
| Living Room | 3.29m x 3.14m (max) (max) | 10'10" x 10'4" (max) (max) |
| Bedroom 1 | 3.98m x 3.31m (max) (max) | 13'1" x 10'0" (max) (max) |
| Bedroom 1 En Suite | 2.20m x 1.46m | 7'3" x 4'9" |
| Bedroom 2 | 3.96m x 2.59m (max) (max) | 13'0" x 8'6" (max) (max) |
| Bathroom | 2.21m x 1.91m | 7'3" x 6'3" |

Housetypes

The Torquay

Plot numbers 144, 177, 180, 181, 184, 185, 188, 193 & 195

Summary points

5 key points (minimum)

ie



House

✓ Open-plan living and dining area



2 Bathrooms

✓ French doors into garden



3 Bedrooms

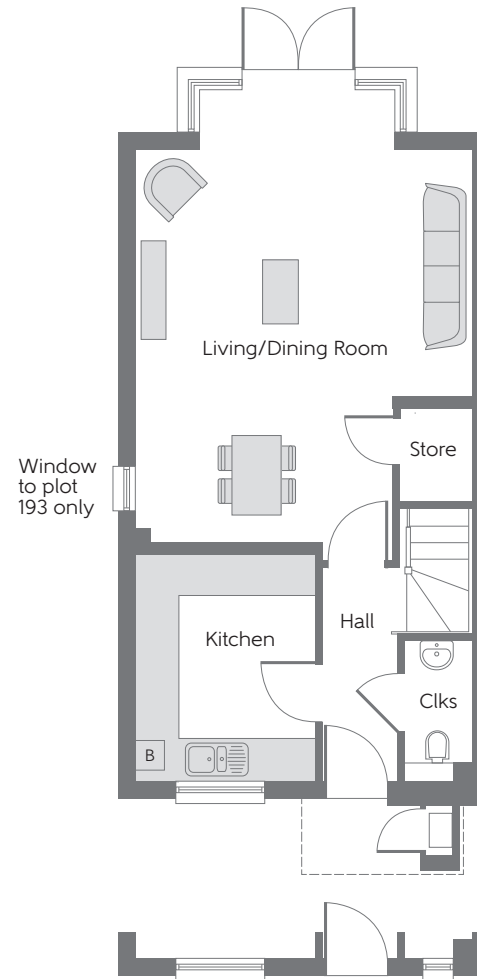
✓ Separate front-facing kitchen

✓ Ground floor cloakroom

✓ En suite to bedroom 1

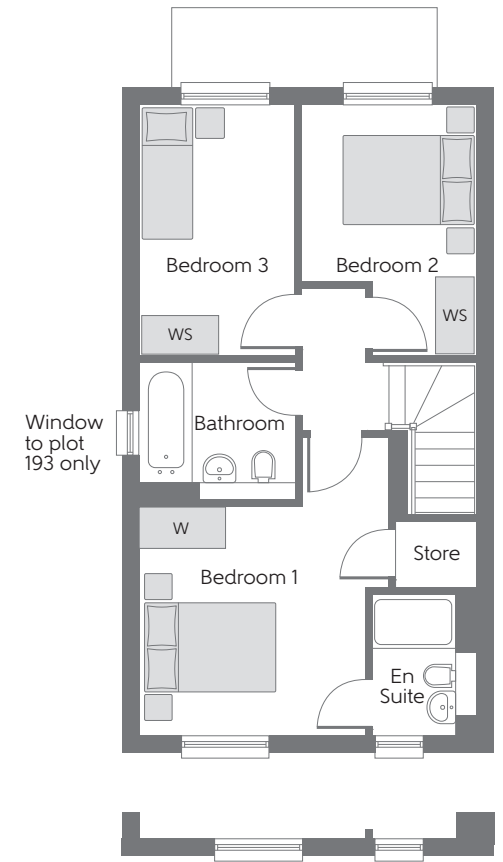


921 Sq.ft.



GROUND FLOOR

| | | |
|--------------------|---------------------|----------------------|
| Kitchen | 3.17m x 2.51m | 10'5" x 8'3" |
| Living/Dining Room | 5.47m x 4.67m (max) | 17'11" x 15'4" (max) |
| Cloakroom | 1.96m x 0.94m | 6'5" x 3'1" |

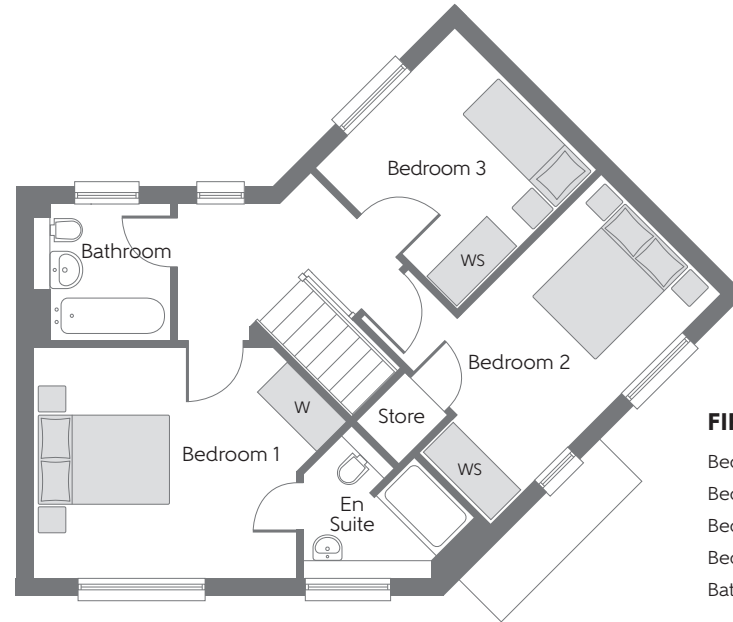


FIRST FLOOR

| | | |
|--------------------|---------------|---------------|
| Bedroom 1 | 4.16m x 3.46m | 13'8" x 11'4" |
| Bedroom 1 En Suite | 1.96m x 1.48m | 6'5" x 4'10" |
| Bedroom 2 | 3.49m x 2.43m | 11'5" x 8'0" |
| Bedroom 3 | 3.49m x 2.15m | 11'5" x 7'1" |
| Bathroom | 2.15m x 1.91m | 7'1" x 6'3" |

Windows to plots 177 & 180

Housetypes



FIRST FLOOR

| | | |
|--------------------|------------------------------|--------------------------------|
| Bedroom 1 | 3.65m x 3.19m | 12'0" x 10'5" |
| Bedroom 1 En Suite | 2.11m x 1.79m | 6'11" x 5'11" |
| Bedroom 2 | 4.51m x 3.30m (max) (max) | 14'10" x 10'10" (max) (max) |
| Bedroom 3 | 2.76m x 2.72m | 9'1" x 8'11" |
| Bathroom | 1.91m x 1.91m | 6'3" x 6'3" |

The Talbot

Plot numbers 248 & 249

Summary points

5 key points (minimum)
ie



House



2 Bathrooms

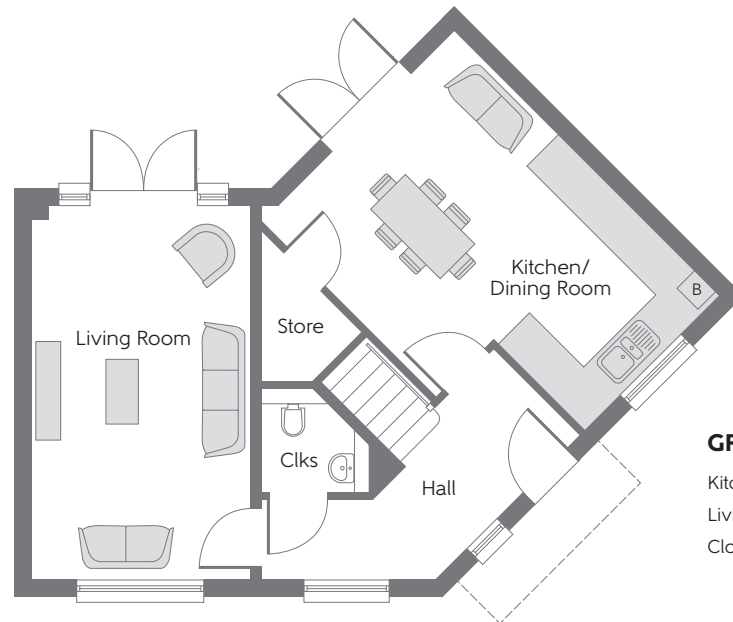


3 Bedrooms



1019 Sq.ft.

- ✓ Dual-aspect living room
- ✓ French doors into garden
- ✓ Open-plan kitchen/dining room
- ✓ Ground floor cloakroom
- ✓ En suite to bedroom 1



GROUND FLOOR

| | | |
|---------------------|------------------------|------------------------|
| Kitchen/Dining Room | 5.19m x 3.76m (max) | 17'0" x 12'4" (max) |
| Living Room | 5.19m x 3.01m | 17'0" x 9'10" |
| Cloakroom | 1.50m x 1.47m | 4'11" x 4'10" |

Housetypes

The Lymington

Plot number 197

Summary points

5 key points (minimum)
ie



House



3 Bathrooms

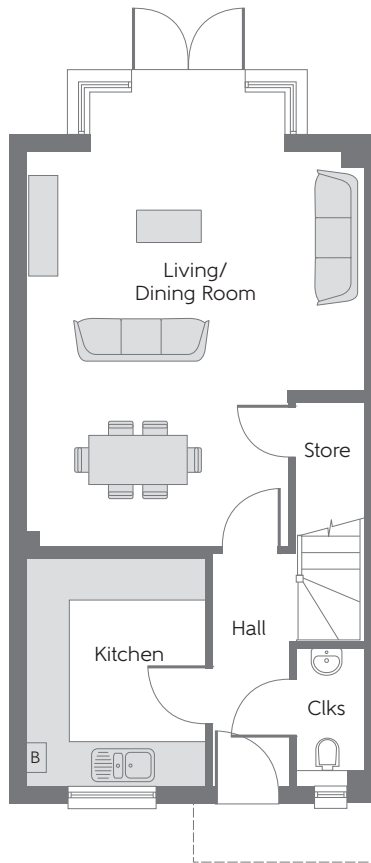


3 Bedrooms



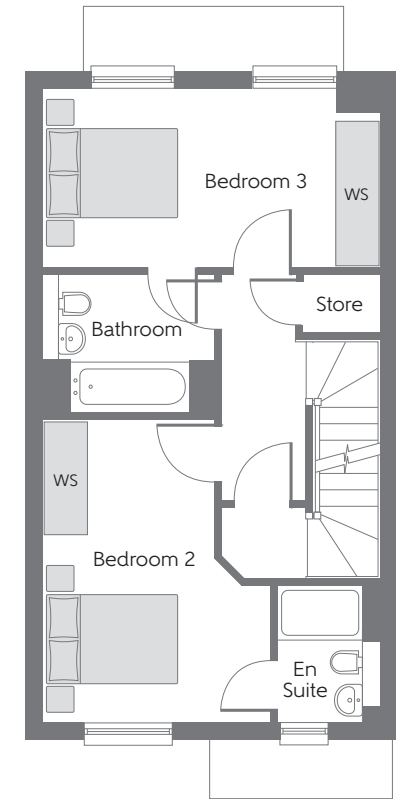
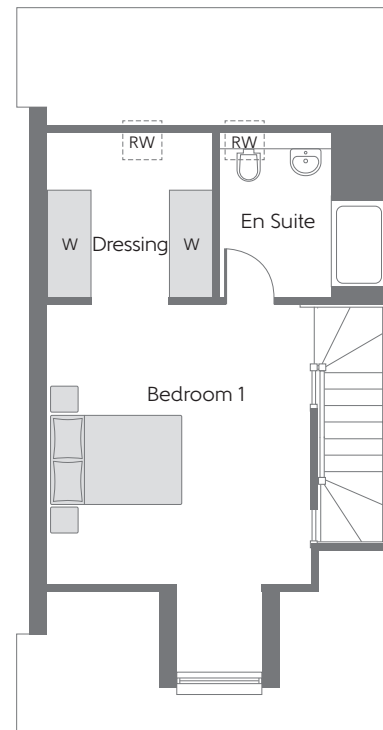
1248 Sq.ft.

- ✓ Open-plan living and dining area
- ✓ French doors into garden
- ✓ Separate front-facing kitchen
- ✓ Three double bedrooms
- ✓ En suite and dressing room to bedroom 1 on second floor



GROUND FLOOR

| | | |
|------------------------|------------------------------|-------------------------------|
| Kitchen | 3.17m x 2.51m | 10'5" x 8'3" |
| Living/ Dining Room | 5.47m x 4.67m (max) (max) | 17'11" x 15'4" (max) (max) |
| Cloakroom | 1.90m x 0.94m | 6'3" x 3'1" |



FIRST FLOOR

| | | |
|-----------|------------------------|-------------------------|
| Bedroom 2 | 4.21m x 3.13m (max) | 13'10" x 10'3" (max) |
| En Suite | 1.90m x 1.45m | 6'3" x 4'9" |
| Bedroom 3 | 4.67m x 2.48m | 15'4" x 8'2" |
| Bathroom | 2.38m x 1.93m | 7'10" x 6'4" |

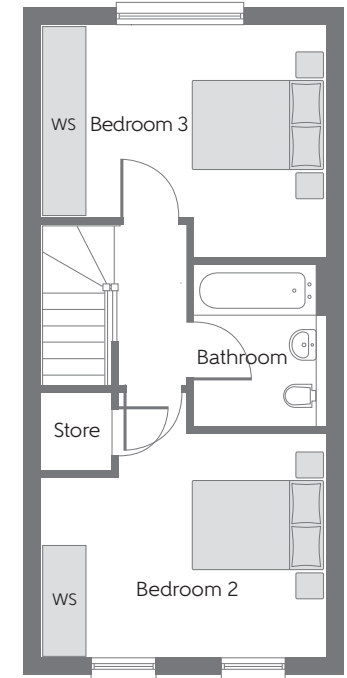
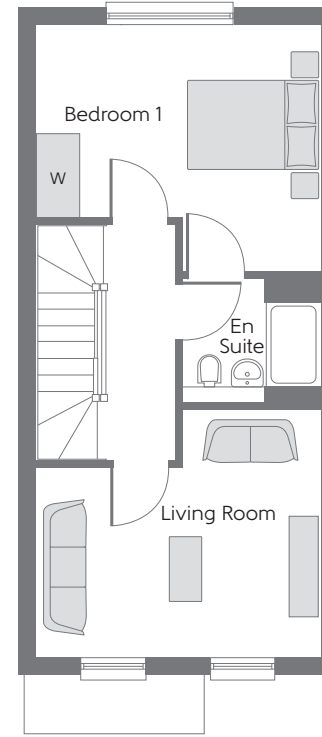
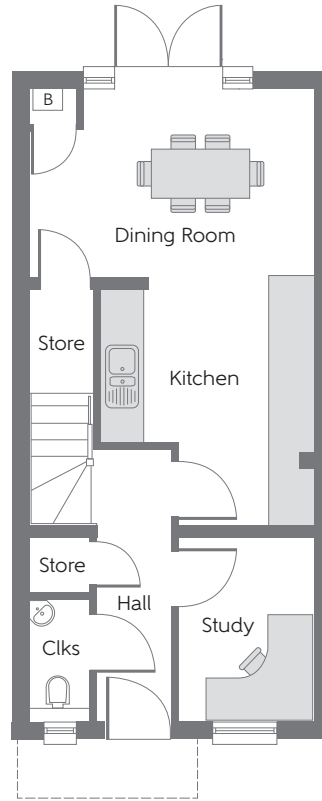
SECOND FLOOR

| | | |
|-----------|------------------------------|-------------------------------|
| Bedroom 1 | 4.95m x 3.63m (max) (max) | 16'3" x 11'11" (max) (max) |
| En Suite | 2.32m x 2.29m | 7'7" x 7'6" |
| Dressing | 2.29m x 1.82m | 7'6" x 6'0" |

Housetypes

The Shoreham

Plot numbers 200, 201, 205, 206, 209, 210, 214 & 215



Summary points



House



2 Bathrooms



3 Bedrooms



1153 Sq.ft.

5 key points (minimum)

ie

- ✓ Open-plan kitchen and dining area
- ✓ French doors into garden
- ✓ Separate study
- ✓ Three double bedrooms
- ✓ En suite to bedroom 1

GROUND FLOOR

| | | |
|-------------|------------------------------|-----------------------------|
| Kitchen | 3.29m x 2.96m (max) (max) | 10'9" x 9'8" (max) (max) |
| Dining Room | 3.99m x 2.60m | 13'1" x 8'6" |
| Study | 2.60m x 1.90m | 8'6" x 6'3" |
| Cloakroom | 1.66m x 0.94m | 5'6" x 3'1" |

FIRST FLOOR

| | | |
|-----------------------|------------------------------|------------------------------|
| Living Room | 3.99m x 3.48m (max) (max) | 13'1" x 11'5" (max) (max) |
| Bedroom 1 | 3.99m x 3.42m (max) (max) | 13'1" x 11'3" (max) (max) |
| Bedroom 1 En Suite | 1.92m x 1.73m | 6'4" x 5'8" |

SECOND FLOOR

| | | |
|-----------|------------------------------|-------------------------------|
| Bedroom 2 | 3.99m x 3.11m (max) (max) | 13'11" x 10'3" (max) (max) |
| Bedroom 3 | 3.99m x 3.22m (max) (max) | 13'1" x 10'7" (max) (max) |
| Bathroom | 1.95m x 1.95m | 6'5" x 6'5" |

Housetypes

The Falmouth

Plot numbers 145, 148, 149, 152, 153, 156, 157, 160, 161, 164, 165, 168, 169, 172, 173 & 176

Summary points

5 key points (minimum)
ie



House

✓ Living room with French doors to the garden



2 Bathrooms

✓ Front-facing kitchen and dining room



3 Bedrooms

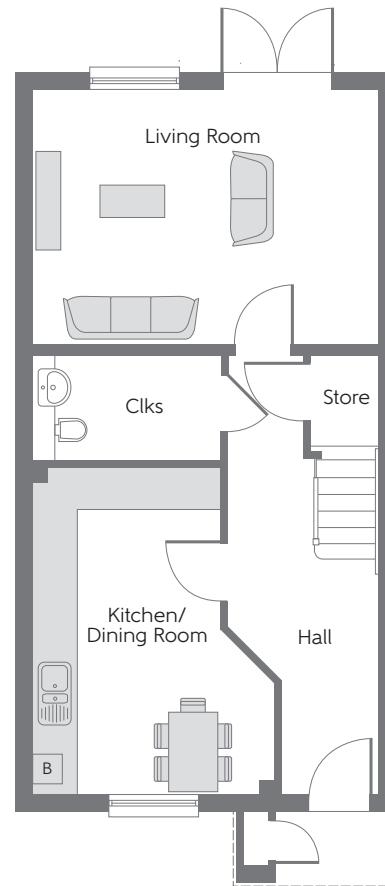
✓ Ground floor cloakroom

✓ Modern family bathroom

✓ En suite to bedroom 1

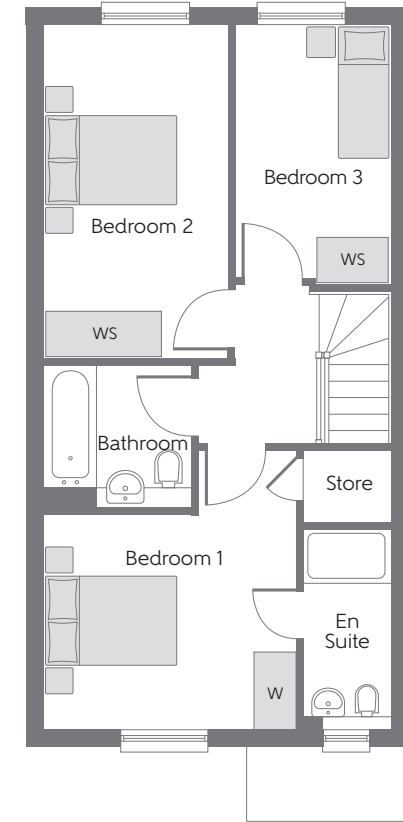


1026 Sq.ft.



GROUND FLOOR

| | | |
|---------------------|------------------------|-------------------------|
| Kitchen/Dining Room | 4.55m x 3.36m (max) | 14'11" x 11'0" (max) |
| Living Room | 4.79m x 3.55m | 15'9" x 11'8" |
| Cloakroom | 2.61m x 1.46m | 8'7" x 4'10" |



FIRST FLOOR

| | | |
|--------------------|------------------------|-------------------------|
| Bedroom 1 | 3.92m x 3.50m (max) | 12'10" x 11'6" (max) |
| Bedroom 1 En Suite | 2.82m x 1.20m | 9'3" x 3'11" |
| Bedroom 2 | 4.62m x 2.55m | 15'2" x 8'4" |
| Bedroom 3 | 3.61m x 2.15m | 11'10" x 7'1" |
| Bathroom | 2.06m x 1.99m | 6'9" x 6'6" |

Housetypes

The Whitstable

Plot numbers 196 & 198

Summary points

5 key points (minimum)
ie



House



3 Bathrooms



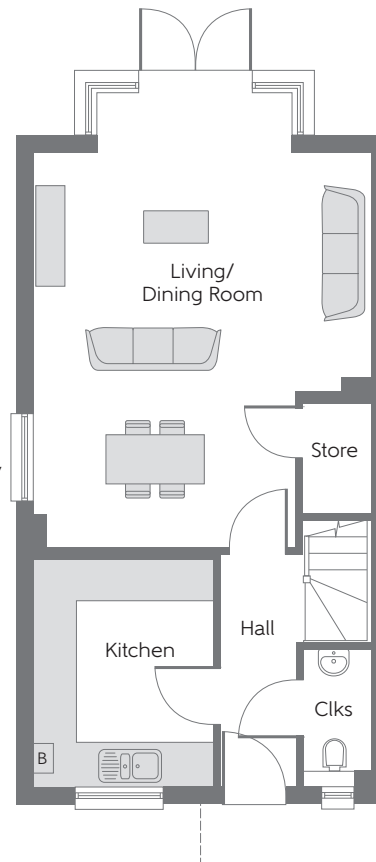
4 Bedrooms



1248 Sq.ft.

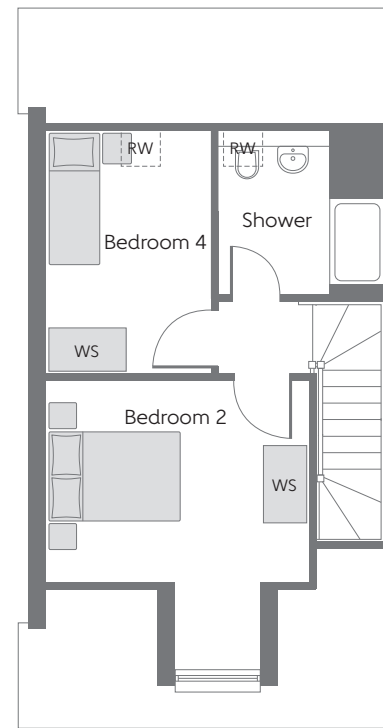
- ✓ Open-plan living and dining area
- ✓ French doors into garden
- ✓ Separate front-facing kitchen
- ✓ En suite to bedroom 1
- ✓ Second floor shower room for bedrooms 2 and 4

Window to plot 198 only



GROUND FLOOR

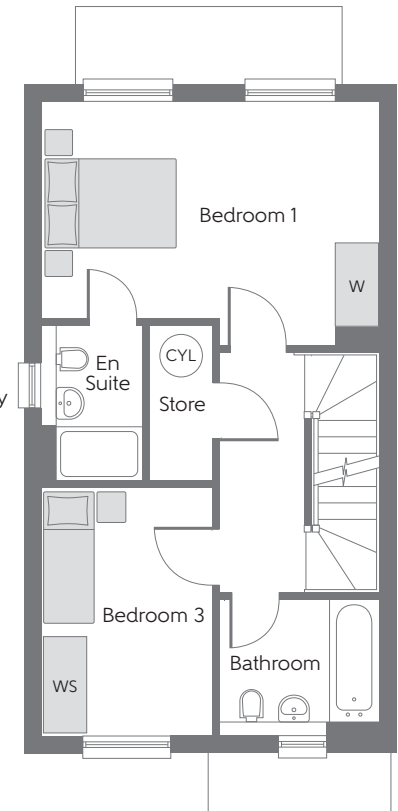
| | | |
|------------------------|------------------------------|------------------------------|
| Kitchen | 3.23m x 2.48m | 10'7" x 8'2" |
| Living/ Dining Room | 6.26m x 4.67m (max) (max) | 20'7" x 15'4" (max) (max) |
| Cloakroom | 1.88m x 0.92m | 6'2" x 3'0" |



SECOND FLOOR

| | | |
|-----------|------------------------------|------------------------------|
| Bedroom 2 | 3.83m x 3.53m (max) (max) | 12'7" x 11'7" (max) (max) |
| Bedroom 4 | 3.24m x 2.39m (max) (max) | 10'8" x 7'10" (max) (max) |
| Shower | 2.19m x 2.12m | 7'2" x 6'11" |

Window to plot 198 only



FIRST FLOOR

| | | |
|-----------|------------------------------|------------------------------|
| Bedroom 1 | 4.67m x 3.55m (max) (max) | 15'4" x 11'8" (max) (max) |
| En Suite | 2.15m x 1.45m | 7'1" x 4'9" |
| Bedroom 3 | 3.43m x 2.31m | 11'3" x 7'7" |
| Bathroom | 2.27m x 1.88m | 7'5" x 6'2" |

Housetypes

The Gloucester

Plot numbers 199, 202, 204, 207, 208, 211, 213 & 216

Summary points

5 key points (minimum)
ie



House



3 Bathrooms

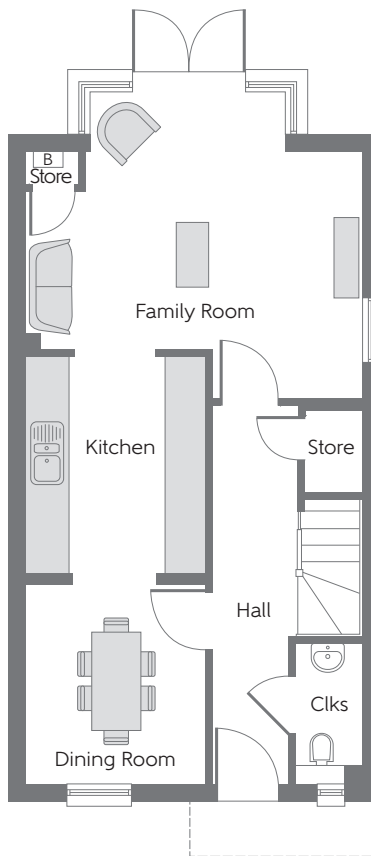


4 Bedrooms



1369 Sq.ft.

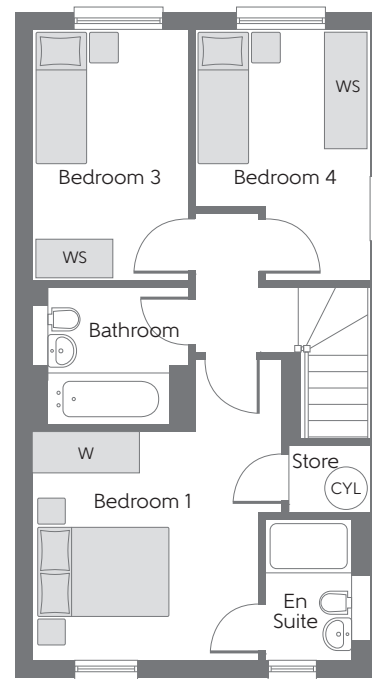
- ✓ Open-plan family room, kitchen and dining room on the ground floor
- ✓ French doors into garden
- ✓ First floor living room
- ✓ En suite to bedrooms 1 and 2
- ✓ Ground and first floor cloakroom



Window to plots 199, 207, 208 & 216

GROUND FLOOR

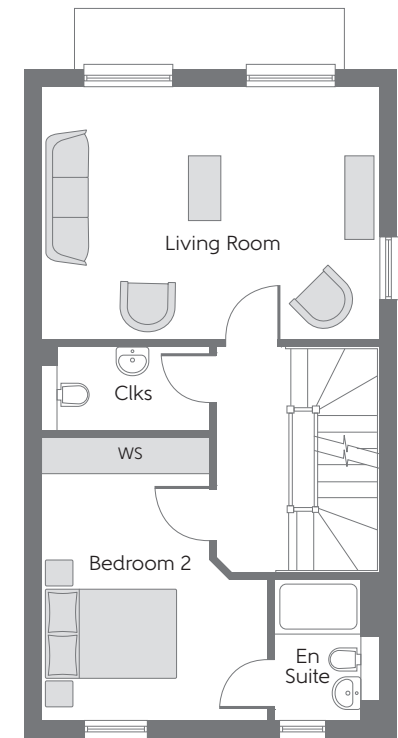
| | | |
|-------------|------------------------------|------------------------------|
| Kitchen | 3.51m x 2.48m | 11'6" x 8'2" |
| Family Room | 4.68m x 4.00m (max) (max) | 15'4" x 13'2" (max) (max) |
| Dining Room | 2.78m x 2.48m | 9'1" x 8'2" |
| Cloakroom | 1.88m x 0.92m | 6'2" x 3'0" |



Window to plots 199, 207, 208 & 216

SECOND FLOOR

| | | |
|-----------------------|------------------------------|------------------------------|
| Bedroom 1 | 4.13m x 3.49m (max) (max) | 13'7" x 11'5" (max) (max) |
| Bedroom 1 En Suite | 1.88m x 1.45m | 6'2" x 4'9" |
| Bedroom 3 | 3.55m x 2.15m | 11'8" x 7'1" |
| Bedroom 4 | 3.55m x 2.43m (max) (max) | 11'8" x 8'0" (max) (max) |
| Bathroom | 2.15m x 1.90m | 7'1" x 6'3" |



Window to plots 199, 207, 208 & 216

FIRST FLOOR

| | | |
|-----------------------|------------------------------|------------------------------|
| Living Room | 4.67m x 3.55m | 15'4" x 11'8" |
| Bedroom 2 | 3.95m x 3.13m (max) (max) | 13'0" x 10'3" (max) (max) |
| Bedroom 2 En Suite | 1.88m x 1.45m | 6'2" x 4'9" |
| Cloakroom | 2.31m x 1.11m | 7'7" x 3'8" |

Housetypes

The Wadebridge

Plot numbers 125, 128, 130, 131, 134, 135, 137 & 140

Summary points 5 key points (minimum)
ie



House



3 Bathrooms

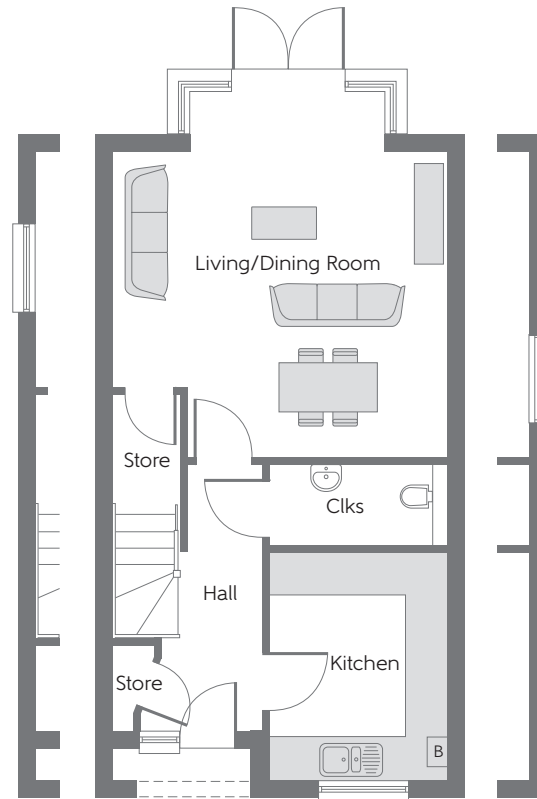


3 Bedrooms



1233 Sq.ft.

- ✓ Open-plan living/dining room on the ground floor
- ✓ French doors into garden
- ✓ Separate kitchen
- ✓ Three double bedrooms
- ✓ En suite to bedrooms 1 and 2
- ✓ Dressing room to bedroom 1

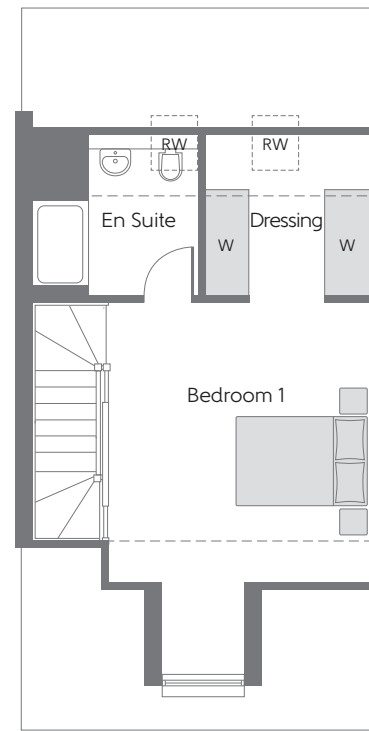


Wall variation to plots 125 & 140

Wall variation to plots 125 & 140

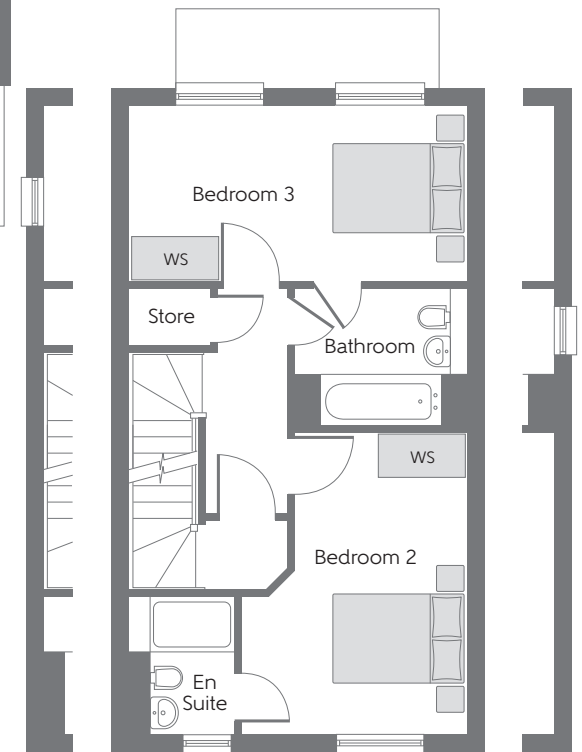
GROUND FLOOR

| | | |
|--------------------|---------------|---------------|
| Kitchen | 2.47m x 3.17m | 8'1" x 10'5" |
| Living/Dining Room | 4.66m x 4.29m | 15'4" x 14'1" |
| Cloakroom | 2.49m x 1.15m | 8'2" x 3'9" |



SECOND FLOOR

| | | |
|-----------|------------------------|-------------------------|
| Bedroom 1 | 4.95m x 3.63m (max) | 16'3" x 11'11" (max) |
| En Suite | 2.32m x 2.29m | 7'7" x 7'6" |
| Dressing | 2.29m x 1.82m | 7'6" x 6'0" |



Wall variation to plots 125 & 140

Wall variation to plots 125 & 140

FIRST FLOOR

| | | |
|-----------|------------------------|-------------------------|
| Bedroom 2 | 4.21m x 3.13m (max) | 13'10" x 10'3" (max) |
| En Suite | 1.90m x 1.45m | 6'3" x 4'9" |
| Bedroom 3 | 4.67m x 2.48m | 15'4" x 8'2" |
| Bathroom | 2.38m x 1.93m | 7'10" x 6'4" |

Housetypes

The Newton Life

Plot numbers 141, 186 & 187

Summary points

5 key points (minimum)

ie



House



2 Bathrooms

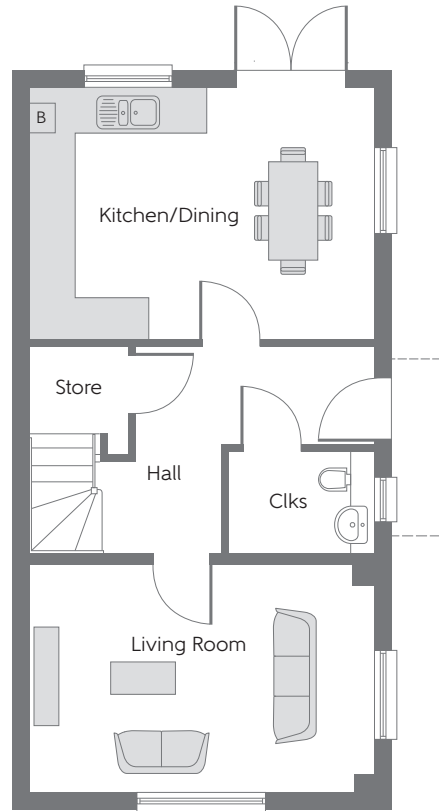


3 Bedrooms



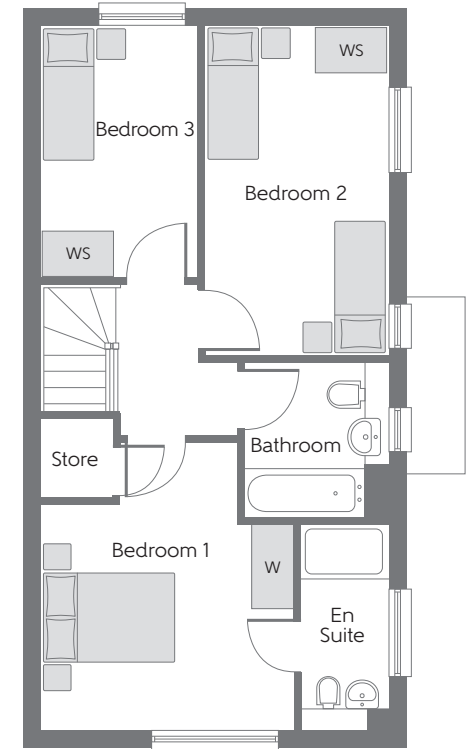
1026 Sq.ft.

- ✓ Dual-aspect front-facing living room
- ✓ Open-plan kitchen/dining room
- ✓ French doors into garden
- ✓ Ground floor cloakroom
- ✓ En suite to bedroom 1



GROUND FLOOR

| | | |
|----------------|---------------|---------------|
| Kitchen/Dining | 4.79m x 3.49m | 15'9" x 11'6" |
| Living Room | 4.79m x 3.16m | 15'9" x 10'4" |
| Cloakroom | 2.03m x 1.43m | 6'8" x 4'8" |



FIRST FLOOR

| | | |
|-----------------------|------------------------|------------------------|
| Bedroom 1 | 3.50m x 3.99m (max) | 11'6" x 13'2" (max) |
| Bedroom 1 En Suite | 1.20m x 2.82m | 3'11" x 9'3" |
| Bedroom 2 | 2.55m x 4.59m | 8'4" x 15'1" |
| Bedroom 3 | 2.15m x 3.49m | 7'1" x 11'6" |
| Bathroom | 2.22m x 1.97m | 7'3" x 6'6" |

Housetypes

The Mistley

Plot numbers 126, 127, 132, 133, 138 & 139

Summary points

5 key points (minimum)
ie



House



3 Bathrooms

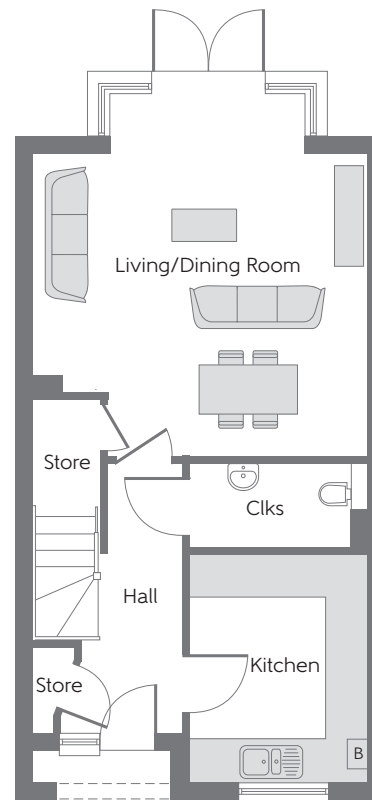


4 Bedrooms



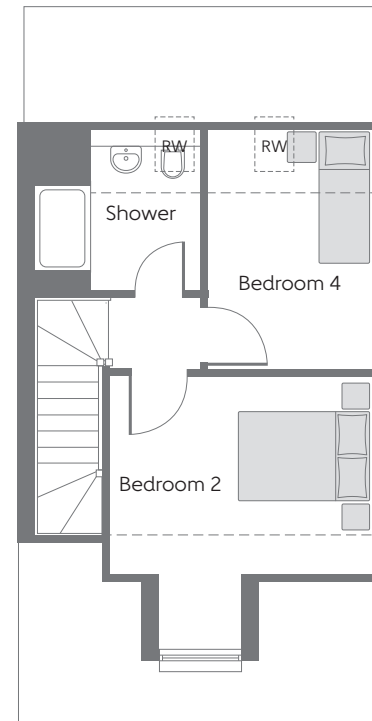
1233 Sq.ft.

- ✓ Open-plan living and dining area
- ✓ French doors into garden
- ✓ Separate front-facing kitchen
- ✓ En suite to bedroom 1
- ✓ Second floor shower room for bedrooms 2 and 4



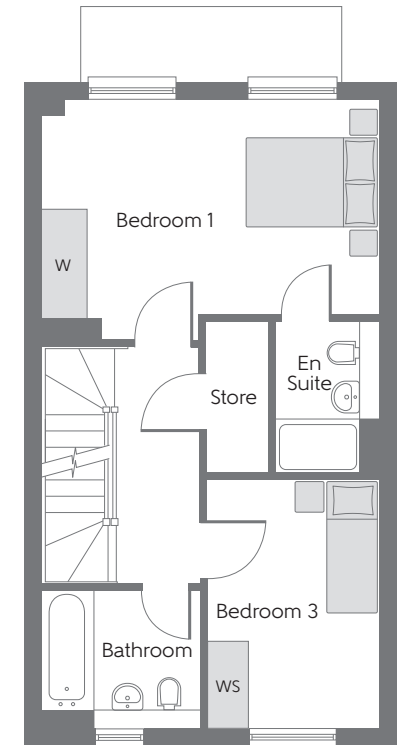
GROUND FLOOR

| | | |
|--------------------|---------------|---------------|
| Kitchen | 2.47m x 3.17m | 8'1" x 10'5" |
| Living/Dining Room | 4.66m x 4.29m | 15'4" x 14'1" |
| Cloakroom | 2.49m x 1.15m | 8'2" x 3'9" |



SECOND FLOOR

| | | |
|-----------|------------------------------|------------------------------|
| Bedroom 2 | 3.83m x 3.53m (max) (max) | 12'7" x 11'7" (max) (max) |
| Bedroom 4 | 3.24m x 2.39m (max) (max) | 10'8" x 7'10" (max) (max) |
| Shower | 2.19m x 2.12m | 7'2" x 6'11" |



FIRST FLOOR

| | | |
|-----------------------|------------------------------|------------------------------|
| Bedroom 1 | 4.67m x 3.55m (max) (max) | 15'4" x 11'8" (max) (max) |
| Bedroom 1 En Suite | 2.15m x 1.45m | 7'1" x 4'9" |
| Bedroom 3 | 3.43m x 2.31m | 11'3" x 7'7" |
| Bathroom | 2.27m x 1.88m | 7'5" x 6'2" |