

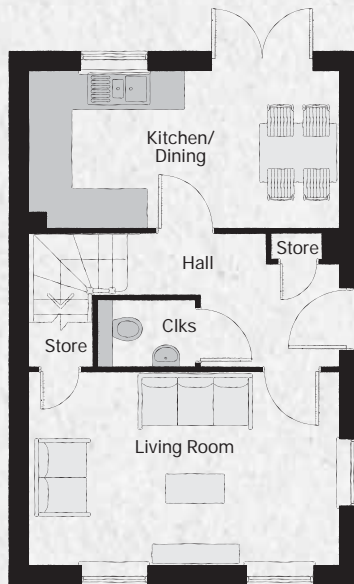
# THE LUMLEY

PLOT 10



# THE LUMLEY

## PLOT 10



### GROUND FLOOR

Kitchen/Dining	4.830m x 2.472m	15'10" x 8'1"
Living Room	4.830m x 2.987m	15'10" x 9'10"
Cloakroom	1.550m x 1.079m	5'1" x 3'6"



### FIRST FLOOR

Bedroom 1	3.330m x 3.431m	10'11" x 11'3"
En Suite	2.467m x 1.438m	8'1" x 4'9"
Bedroom 2	2.560m x 3.125m	8'5" x 10'3"
Bedroom 3	2.207m x 2.072m	7'3" x 6'10"
Bathroom	2.560m x 1.993m	8'5" x 6'6"

Some items shown in this key may be subject to change, and positions could vary from those indicated on this floorplan. Please refer to Sales Advisor for details of your selected plot. External finishes, landscaping and configuration may vary from plot to plot. Please refer to Sales Advisor for further details. All dimensions are approximate and should not be used for carpet sizes, appliance spaces or furniture. Furniture not to scale and all positions are indicative. Kitchen layouts are subject to change. We operate a policy of continuous improvement and individual features such as kitchen and bathroom layouts, doors, windows, garages and elevational treatments may vary from time to time. Consequently these particulars should be treated as general guidance only and do not constitute a contract, part of a contract or a warranty.