



THE  
**ARTISAN**  
COLLECTION

# Bishops Gate

DEVELOPMENT LAYOUT





Woodmansey Mile  
Beverley, Hull  
HU17 8NX  
Telephone: 01482 904 969  
[bellway.co.uk](http://bellway.co.uk)

**Bellway**




## 2 Bedroom Homes

-  The Joiner  
Plot 295
-  The Woodcarver  
Plots 296 & 297

## 3 Bedroom Homes

-  The Tailor  
Plots 12, 268, 269, 273 & 274
-  The Thespian  
Plots 9, 13, 14, 267, 275, 279 & 294
-  The Turner  
Plots 20, 21, 23 & 24
-  The Baxter  
Plots 3 & 7
-  The Mason  
Plots 270 & 271

## 4 Bedroom Homes

-  The Scrivener  
Plots 2, 4, 8 & 278
-  The Cartwright  
Plots 276 & 277
-  The Cutler  
Plots 19 & 22
-  The Bowyer  
Plots 1, 6, 15, 17, 18, 25 & 272
-  The Philosopher  
Plots 5 & 16

## 2-3 Bedroom Homes

-  Affordable Homes

**Key to plan**  
bcp Bin collection point

The site plan is drawn to show the relative position of individual properties. NOT TO SCALE. This is a two dimensional drawing and will not show land contours and gradients, boundary treatments, landscaping or local authority street lighting. Footpaths subject to change. For details of individual properties and availability please refer to our Sales Advisor.

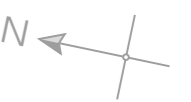


Existing Development

Future Proposed Development

LAP

Ongoing Development



# Bellway



5 STAR HOME BUILDER  
CUSTOMER SATISFACTION



YOUR NEW HOME MEANS A LOT TO YOU.  
OUR FIVE-STAR RATING SHOWS HOW  
MUCH IT MEANS TO US.

Based on results from the annual National New Homes Survey, the HBF rewards those builders who reach or exceed elevated levels of customer satisfaction and service excellence with the ultimate accolade of five stars. The findings come directly from you the buyer, and the survey is impartial, independent, and validated by a UK university.

Five stars means 90% or more customers say they would recommend us to a friend. So it means a great deal to us, and, with a five star rating being above the industry average, it also means that you can buy a Bellway home with confidence.

