

# Housetypes

- Standard Artisan
- Bespoke Artisan
- Brand New House Type



## The Tyne

Plot numbers 188, 189, 190, 191, 193, 194, 195, 196, 197, 203, 204, 205, 206, 207, 208, 209, 210, 211 & 212

### Summary points

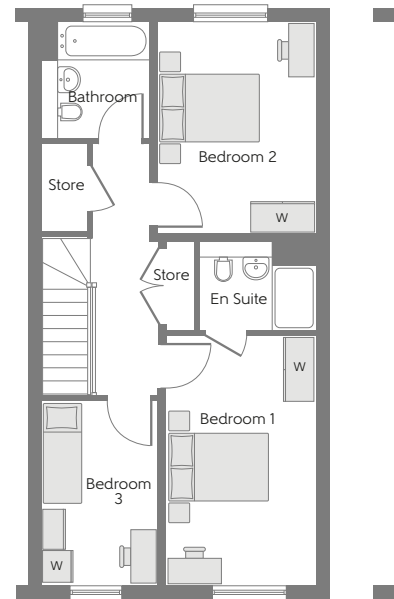
Semi-detached House

2 Bathrooms

3 Bedrooms

5 key points (minimum)  
ie

- Open-plan Kitchen/Dining Area
- Separate Living Room
- En Suite to Bedroom 1
- Family Bathroom
- Parking for 2 cars



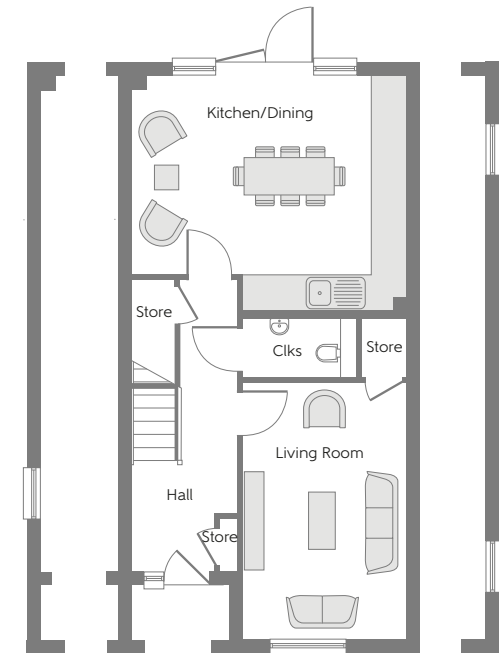
### First Floor

Bedroom 1	4.58m x 2.75m	15'0" x 9'0"
Bedroom 1 En Suite	2.15m x 1.65m	7'1" x 5'4"
Bedroom 2	3.87m x 2.90m	12'7" x 9'5"
Bedroom 3	3.41m x 2.15m	11'2" x 7'1"
Bathroom	2.15m x 2.00m	7'1" x 6'6"

Variation to plots 203, 207 & 212

### Ground Floor

Kitchen/Dining	5.04m x 3.66m	16'5" x 12'0"
Living Room	4.69m x 3.01m	15'4" x 9'9"
Cloakroom	2.10m x 1.10m	6'9" x 3'6"



Variation to plots 188, 191, 197, 203, 206, 207 & 212

Variation to plots 203, 207 & 212

Clks - Cloakroom WS - Wardrobe Space (suggestion only, wardrobe not included)

**Furniture arrangements are for illustrative purposes only. Items are not included, nor to scale.**

The items shown in this key may be subject to change, and positions could vary from those indicated on this floorplan. Please refer to Sales Advisor for details of your selected plot. Computer generated image shown overleaf. External finishes, landscaping and configuration may vary from plot to plot. Please refer to Sales Advisor for further details. All dimensions are approximate and should not be used for carpet sizes, appliance spaces or furniture. We operate a policy of continuous improvement and individual features such as kitchen and bathroom layouts, doors, windows, garages and elevational treatments may vary from time to time. Consequently these particulars should be treated as general guidance only and do not constitute a contract, part of a contract or a warranty.

# Housetypes

- Standard Artisan
- Bespoke Artisan
- Brand New House Type



## The Suffolk

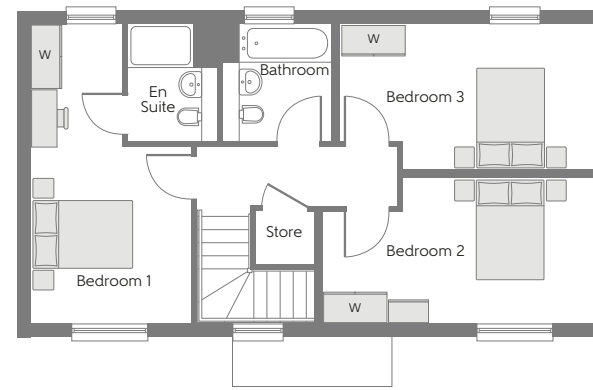
Plot number 192

### Summary points

- Detached House
- 2 Bathrooms
- 3 Bedrooms

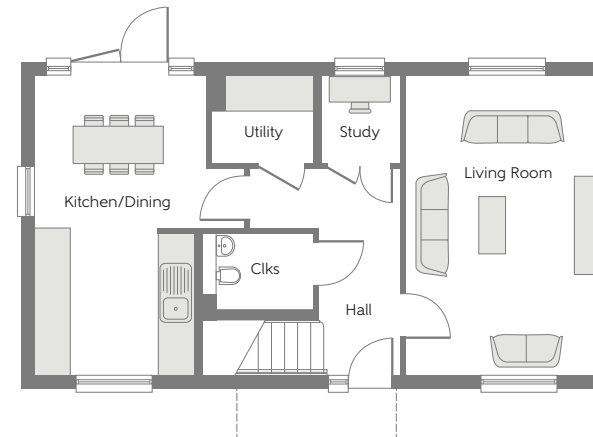
5 key points (minimum)  
ie

- Open-plan Kitchen/Dining Area
- Separate Living Room
- Utility
- Separate Study
- 3 Double Bedrooms
- En Suite to Bedroom 1
- Parking for 2 cars



### First Floor

Bedroom 1	5.49m x 2.95m	18'0" x 9'7"
Bedroom 1 En Suite	2.15m x 1.65m	7'1" x 5'4"
Bedroom 2	4.99m x 2.68m	16'4" x 8'8"
Bedroom 3	4.66m x 2.68m	5'3" x 8'8"
Bathroom	2.15m x 2.00m	7'1" x 6'6"



### Ground Floor

Kitchen/Dining	5.49m x 3.15m	18'0" x 10'3"
Living Room	5.49m x 3.54m	18'0" x 11'6"
Study	1.62m x 15.1m	5'3" x 5'1"
Cloakroom	2.09m x 13.9m	6'8" x 4'6"
Utility	1.86m x 1.62m	6'1" x 5'3"

Clks - Cloakroom W - Wardrobe Space (suggestion only, wardrobe not included)

**Furniture arrangements are for illustrative purposes only. Items are not included, nor to scale.**

The items shown in this key may be subject to change, and positions could vary from those indicated on this floorplan. Please refer to Sales Advisor for details of your selected plot. Computer generated image shown overleaf. External finishes, landscaping and configuration may vary from plot to plot. Please refer to Sales Advisor for further details. All dimensions are approximate and should not be used for carpet sizes, appliance spaces or furniture. We operate a policy of continuous improvement and individual features such as kitchen and bathroom layouts, doors, windows, garages and elevational treatments may vary from time to time. Consequently these particulars should be treated as general guidance only and do not constitute a contract, part of a contract or a warranty.

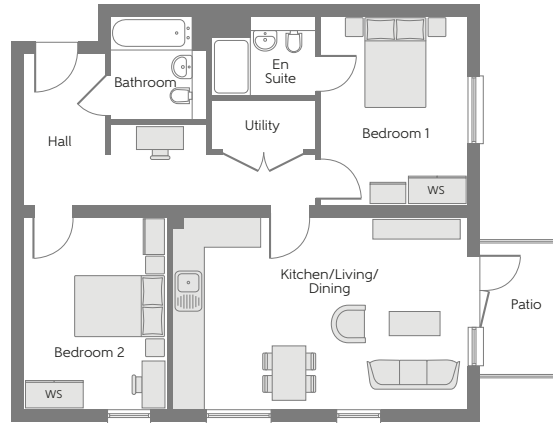
# Apartments

- Standard Artisan
- Bespoke Artisan
- Brand New Apartment Type



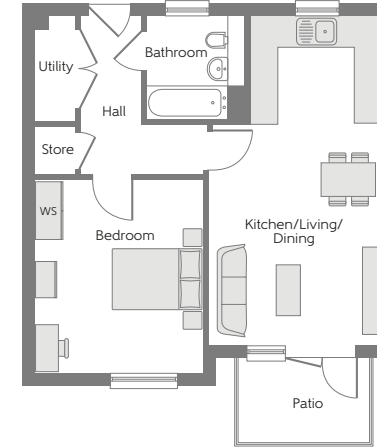
## Axwell Place (Block A1/A2)

Plot numbers 1, 2, 4, 28 & 29



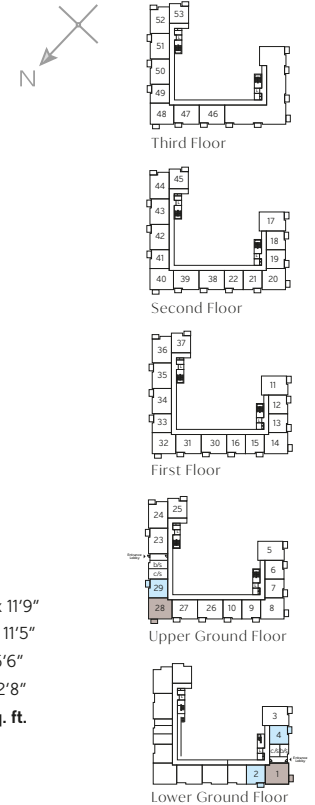
### The Keswick (2BC) - Plots 1 & 28

Kitchen/Living/Dining	6.11m x 3.98m	20'0" x 13'1"
Bedroom 1	3.88m x 3.10m	12'7" x 10'2"
Bedroom 1 En Suite	2.15m x 1.65m	7'0" x 5'4"
Bedroom 2	3.98m x 2.99m	13'1" x 9'8"
Bathroom	2.15m x 2.00m	7'0" x 6'6"
Utility	2.15m x 0.98m	7'1" x 3'2"
<b>Total area</b>	<b>72.56 sq. m.</b>	<b>781 sq. ft.</b>



### The Arundel (1AB) - Plots 2, 4 & 29

Kitchen/Living/Dining	6.85m x 3.62m	22'5" x 11'9"
Bedroom	4.01m x 3.51m	13'2" x 11'5"
Bathroom	2.15m x 2.00m	7'1" x 6'6"
Utility	2.20m x 0.85m	7'2" x 2'8"
<b>Total area</b>	<b>50.75 sq. m.</b>	<b>546 sq. ft.</b>



WS - Wardrobe Space (suggestion only, wardrobe not included)

**Furniture arrangements are for illustrative purposes only. Items are not included, nor to scale.**

The items shown in this key may be subject to change, and positions could vary from those indicated on this floorplan. Please refer to Sales Advisor for details of your selected plot. External finishes and landscaping may vary. Please refer to Sales Advisor for further details. All dimensions are approximate and should not be used for carpet sizes, appliance spaces or furniture. We operate a policy of continuous improvement and individual features such as kitchen and bathroom layouts, doors, windows, garages and elevational treatments may vary from time to time. Consequently these particulars should be treated as general guidance only and do not constitute a contract, part of a contract or a warranty.

### Summary points



Apartment



Keswick 2 Bathrooms  
Arundel 1 Bathroom



Keswick 2 Bedrooms  
Arundel 1 Bedroom



Keswick 781 Sq.ft.  
Arundel 546 Sq.ft.

### 5 key points (minimum)

ie

- Open-plan Living/Dining Area
- En Suite to The Keswick (plots 1 & 28)
- Patio, Terrace or Balcony
- Parking
- Access to EV Charging points

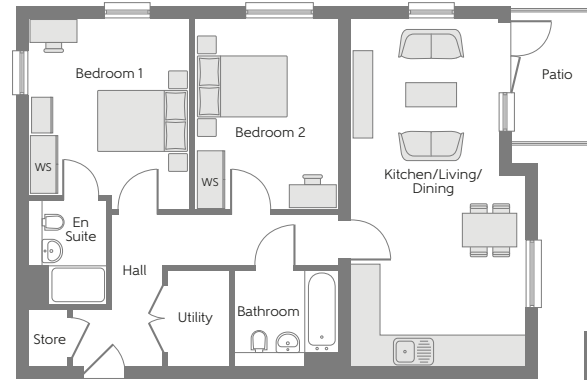
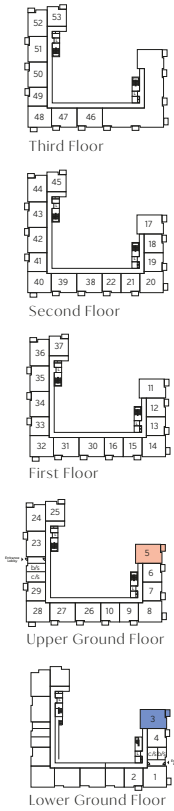
# Apartments

- Standard Artisan
- Bespoke Artisan
- Brand New Apartment Type



## Axwell Place (Block A1/A2)

Plot numbers 3 & 5

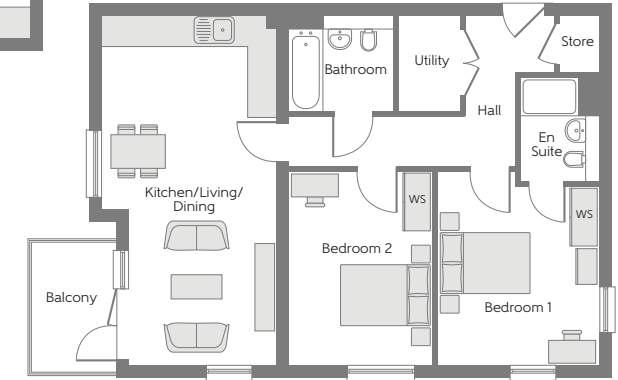


### The Horndean (2AB) – Plot 3

Kitchen/Living/Dining	7.22m x 3.63m	23'7" x 11'9"
Bedroom 1	3.67m x 3.39m	12'0" x 11'1"
Bedroom 1 En Suite	2.15m x 1.65m	7'1" x 5'4"
Bedroom 2	3.97m x 2.94m	13'0" x 9'6"
Bathroom	2.15m x 2.00m	7'1" x 6'6"
Utility	2.00m x 1.30m	6'6" x 4'2"
<b>Total area</b>	<b>71.92 sq. m.</b>	<b>774 sq. ft.</b>

### The Heydon (2AB) – Plot 5

Kitchen/Living/Dining	7.26m x 3.63m	23'8" x 11'9"
Bedroom 1	3.73m x 3.37m	12'2" x 11'6"
Bedroom 1 En Suite	2.15m x 1.65m	7'1" x 5'4"
Bedroom 2	4.00m x 2.35m	13'1" x 9'7"
Bathroom	2.15m x 2.00m	7'1" x 6'6"
Utility	2.00m x 1.30m	6'6" x 4'2"
<b>Total area</b>	<b>72.36sq. m.</b>	<b>779 sq. ft.</b>



WS – Wardrobe Space (suggestion only, wardrobe not included)

**Furniture arrangements are for illustrative purposes only. Items are not included, nor to scale.**

The items shown in this key may be subject to change, and positions could vary from those indicated on this floorplan. Please refer to Sales Advisor for details of your selected plot. External finishes and landscaping may vary. Please refer to Sales Advisor for further details. All dimensions are approximate and should not be used for carpet sizes, appliance spaces or furniture. We operate a policy of continuous improvement and individual features such as kitchen and bathroom layouts, doors, windows, garages and elevational treatments may vary from time to time. Consequently these particulars should be treated as general guidance only and do not constitute a contract, part of a contract or a warranty.

### Summary points

Apartment

2 Bathrooms

2 Bedrooms

Horndean 774 Sq.ft.  
Heydon 779 Sq.ft.

### 5 key points (minimum)

ie

- Open-plan Living/Dining Area
- En Suite to Bedroom 1
- Two double bedrooms
- Patio, Terrace or Balcony
- Parking

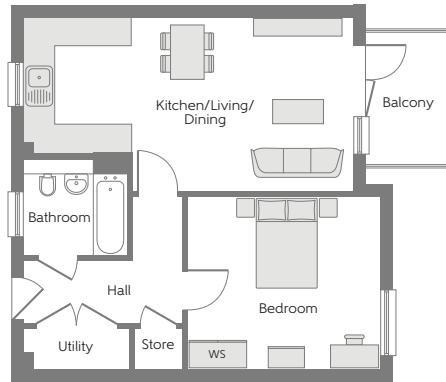
# Apartments

- Standard Artisan
- Bespoke Artisan
- Brand New Apartment Type



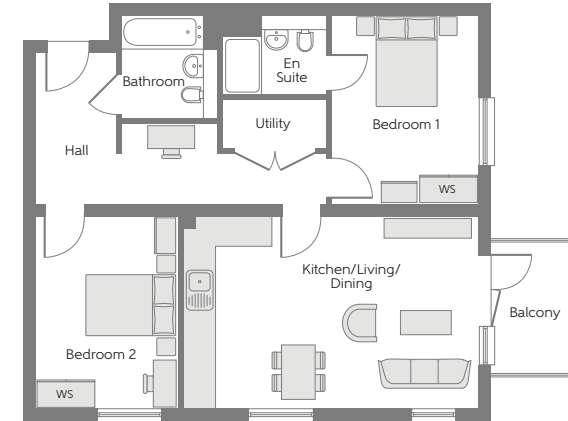
## Axwell Place (Block A1/A2)

Plot numbers 6, 7, 8, 9, 12, 13, 15, 16, 18, 19, 21, 22, 33, 41 & 49



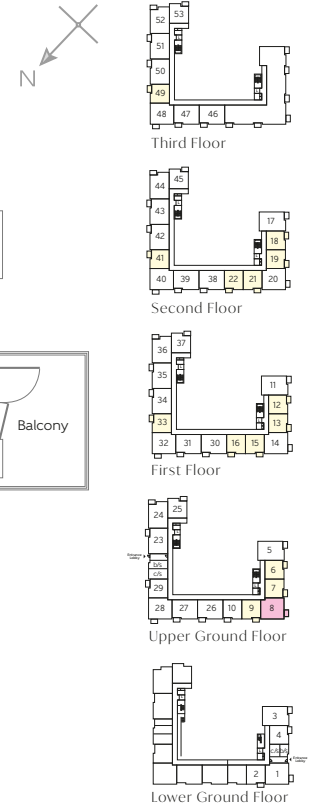
The Aylesbury (1A) - Plots 6, 7, 9, 12, 13, 15, 16, 18, 19, 21, 22, 33, 41 & 49

Kitchen/Living/Dining	6.85m x 3.62m	22'5" x 11'9"
Bedroom	4.01m x 3.59m	13'2" x 11'8"
Bathroom	2.15m x 2.00m	7'1" x 6'6"
Utility	2.00m x 0.85m	6'6" x 2'8"
<b>Total area</b>	<b>51.34 sq. m.</b>	<b>553 sq. ft.</b>



The Ilchester (2BA) - Plot 8

Kitchen/Living/Dining	6.10m x 3.98m	20'0" x 13'1"
Bedroom	3.92m x 3.06m	12'9" x 10'0"
Bathroom	2.15m x 2.00m	7'1" x 6'6"
Utility	2.25m x 1.02m	7'4" x 3'3"
<b>Total area</b>	<b>72.89 sq. m.</b>	<b>785 sq. ft.</b>



WS - Wardrobe Space (suggestion only, wardrobe not included)

**Furniture arrangements are for illustrative purposes only. Items are not included, nor to scale.**

The items shown in this key may be subject to change, and positions could vary from those indicated on this floorplan. Please refer to Sales Advisor for details of your selected plot. External finishes and landscaping may vary. Please refer to Sales Advisor for further details. All dimensions are approximate and should not be used for carpet sizes, appliance spaces or furniture. We operate a policy of continuous improvement and individual features such as kitchen and bathroom layouts, doors, windows, garages and elevational treatments may vary from time to time. Consequently these particulars should be treated as general guidance only and do not constitute a contract, part of a contract or a warranty.

### Summary points

- Apartment
- Aylesbury 1 Bathroom  
Ilchester 2 Bathrooms
- Aylesbury 1 Bedroom  
Ilchester 2 Bedrooms
- Aylesbury 553 Sq.ft.  
Ilchester 785 Sq.ft.

### 5 key points (minimum)

- ie
- Open-plan Living/Dining Area
- En Suite to The Ilchester (plot 8)
- Balcony
- Parking
- Access to EV Charging points

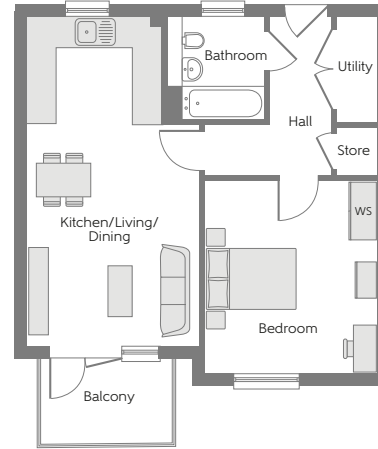
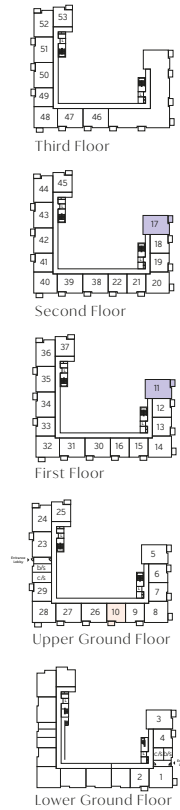
# Apartments

- Standard Artisan
- Bespoke Artisan
- Brand New Apartment Type



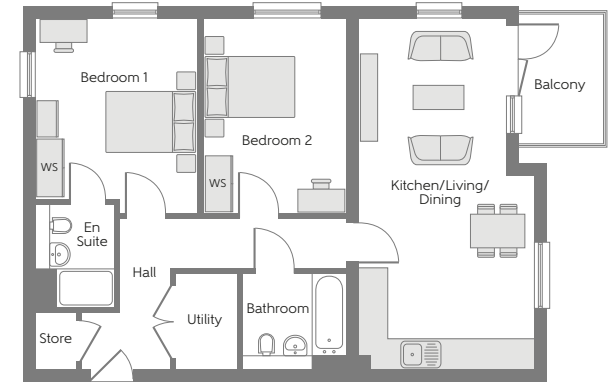
## Axwell Place (Block A1/A2)

Plot numbers 10, 11 & 17



### The Ambleside (1AA) - Plot 10

Kitchen/Living/Dining	6.85m x 3.58m	22'5" x 11'7"
Bedroom	4.01m x 3.59m	13'2" x 11'8"
Bathroom	2.15m x 2.00m	7'1" x 6'6"
Utility	2.20m x 0.85m	7'2" x 2'8"
<b>Total area</b>	<b>51.07 sq. m.</b>	<b>550 sq. ft.</b>



### The Henley (2A) - Plots 11 & 17

Kitchen/Living/Dining	7.30m x 3.63m	23'9" x 11'9"
Bedroom 1	4.04m x 3.37m	13'3" x 11'0"
Bedroom 1 En Suite	2.15m x 1.65m	7'1" x 5'4"
Bedroom 2	4.05m x 2.96m	13'3" x 9'7"
Bathroom	2.15m x 2.00m	7'1" x 6'6"
Utility	2.00m x 1.30m	6'6" x 4'2"
<b>Total area</b>	<b>72.75 sq. m.</b>	<b>783 sq. ft.</b>

WS - Wardrobe Space (suggestion only, wardrobe not included)

**Furniture arrangements are for illustrative purposes only. Items are not included, nor to scale.**

The items shown in this key may be subject to change, and positions could vary from those indicated on this floorplan. Please refer to Sales Advisor for details of your selected plot. External finishes and landscaping may vary. Please refer to Sales Advisor for further details. All dimensions are approximate and should not be used for carpet sizes, appliance spaces or furniture. We operate a policy of continuous improvement and individual features such as kitchen and bathroom layouts, doors, windows, garages and elevational treatments may vary from time to time. Consequently these particulars should be treated as general guidance only and do not constitute a contract, part of a contract or a warranty.

### Summary points



Apartment



Ambleside 1 Bathroom  
Henley 2 Bathrooms



Ambleside 1 Bedroom  
Henley 2 Bedrooms



Ambleside 550 Sq.ft.  
Henley 783 Sq.ft.

### 5 key points (minimum)

ie

- Open-plan Living/Dining Area
- En Suite to The Henley (Plots 11 & 17)
- Two double bedrooms to The Henley (Plots 11 & 17)
- Balcony
- Parking
- Utility Storage Cupboard

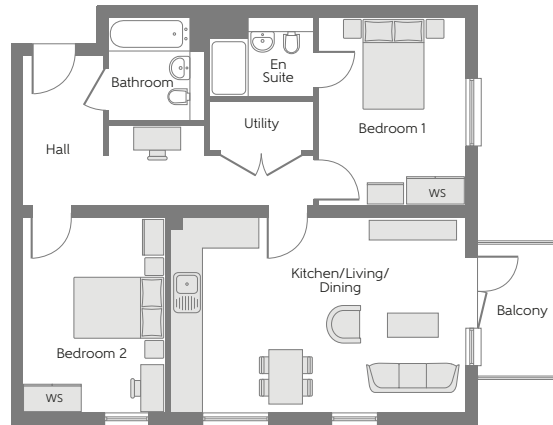
# Apartments

- Standard Artisan
- Bespoke Artisan
- Brand New Apartment Type



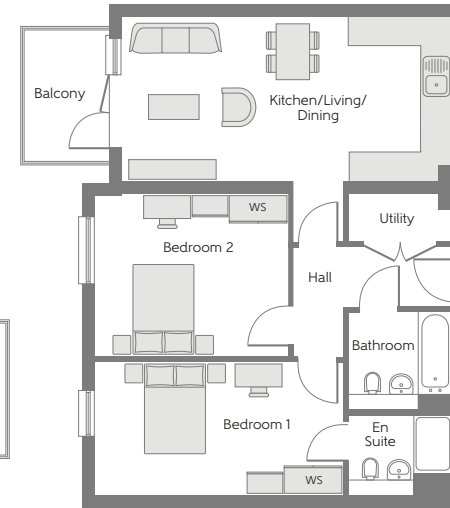
## Axwell Place (Block A1/A2)

Plot numbers 14, 20, 23, 26, 27, 32, 40 & 48



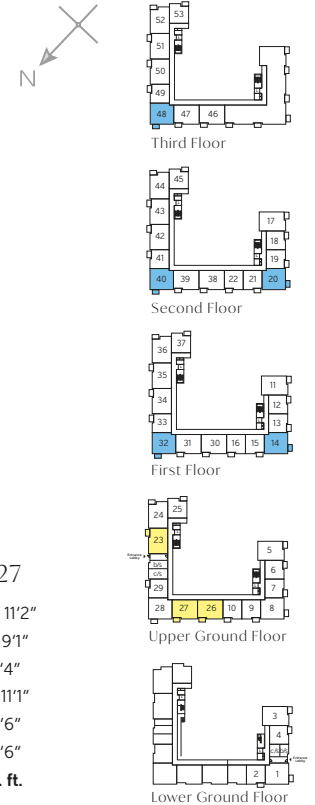
The Holt (2B) – Plots 14, 20, 32, 40 & 48

Kitchen/Living/Dining	6.11m x 4.02m	20'0" x 13'2"
Bedroom 1	3.92m x 3.06m	12'9" x 10'0"
Bedroom 1 En Suite	2.15m x 1.65m	7'1" x 5'4"
Bedroom 2	4.02m x 2.99m	13'2" x 9'8"
Bathroom	2.15m x 2.00m	7'1" x 6'6"
Utility	2.15m x 1.02m	7'1" x 3'3"
<b>Total area</b>	<b>73.25 sq. m.</b>	<b>789 sq. ft.</b>



The Lavenham (2CA) – Plots 23, 26 & 27

Kitchen/Living/Dining	6.85m x 3.42m	22'5" x 11'2"
Bedroom 1	5.16m x 2.76m	16'9" x 9'1"
Bedroom 1 En Suite	2.15m x 1.65m	7'1" x 5'4"
Bedroom 2	4.01m x 3.36m	13'2" x 11'1"
Bathroom	2.15m x 2.00m	7'1" x 6'6"
Utility	2.15m x 1.00m	7'1" x 6'6"
<b>Total area</b>	<b>70.62 sq. m.</b>	<b>760 sq. ft.</b>



WS - Wardrobe Space (suggestion only, wardrobe not included)

**Furniture arrangements are for illustrative purposes only. Items are not included, nor to scale.**

The items shown in this key may be subject to change, and positions could vary from those indicated on this floorplan. Please refer to Sales Advisor for details of your selected plot. External finishes and landscaping may vary. Please refer to Sales Advisor for further details. All dimensions are approximate and should not be used for carpet sizes, appliance spaces or furniture. We operate a policy of continuous improvement and individual features such as kitchen and bathroom layouts, doors, windows, garages and elevational treatments may vary from time to time. Consequently these particulars should be treated as general guidance only and do not constitute a contract, part of a contract or a warranty.

### Summary points

- Apartment
- 2 Bathrooms
- 2 Bedrooms
- Holt 789 Sq.ft.  
Lavenham 760 Sq.ft.

### 5 key points (minimum)

- ie
- Open-plan Kitchen/Living Area
- En Suite to Bedroom 1
- Two double bedrooms
- Utility Storage Cupboard
- Balcony
- Parking

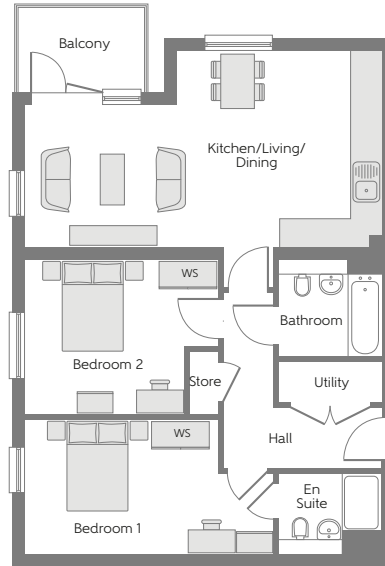
# Apartments

- Standard Artisan
- Bespoke Artisan
- Brand New Apartment Type



## Axwell Place (Block A1/A2)

Plot numbers 36, 37, 44, 45, 52 & 53

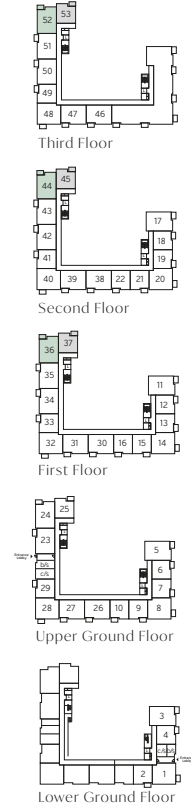
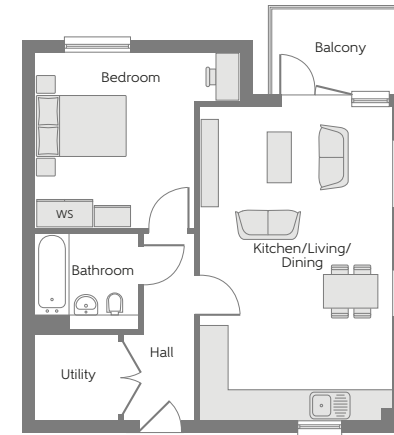


### The Maldon (2D) – Plots 36, 44 & 52

Kitchen/Living/Dining	7.41m x 4.09m	24'3" x 13'4"
Bedroom 1	5.16m x 2.79m	16'9" x 9'2"
Bedroom 1 En Suite	2.15m x 1.65m	7'1" x 5'4"
Bedroom 2	4.01m x 3.19m	13'2" x 10'5"
Bathroom	2.15m x 2.00m	7'1" x 6'6"
Utility	2.15m x 0.85m	7'1" x 2'8"
<b>Total area</b>	<b>73.05 sq. m.</b>	<b>786 sq. ft.</b>

### The Bampton (1B) – Plots 37, 45 & 53

Kitchen/Living/Dining	6.56m x 4.02m	21'4" x 13'2"
Bedroom	4.27m x 3.65 m	14'0" x 12'0"
Bathroom	2.15m x 2.00m	7'1" x 6'6"
Utility	1.79m x 1.75m	5'9" x 5'7"
<b>Total area</b>	<b>52.36 sq. m.</b>	<b>564 sq. ft.</b>



WS - Wardrobe Space (suggestion only, wardrobe not included)

**Furniture arrangements are for illustrative purposes only. Items are not included, nor to scale.**

The items shown in this key may be subject to change, and positions could vary from those indicated on this floorplan. Please refer to Sales Advisor for details of your selected plot. External finishes and landscaping may vary. Please refer to Sales Advisor for further details. All dimensions are approximate and should not be used for carpet sizes, appliance spaces or furniture. We operate a policy of continuous improvement and individual features such as kitchen and bathroom layouts, doors, windows, garages and elevational treatments may vary from time to time. Consequently these particulars should be treated as general guidance only and do not constitute a contract, part of a contract or a warranty.

### Summary points

- Apartment
- Maldon 2 Bathrooms  
Bampton 1 Bathroom
- Maldon 2 Bedrooms  
Bampton 1 Bedroom
- Maldon 786 Sq.ft.  
Bampton 564 Sq.ft.

### 5 key points (minimum)

- ie
- Open-plan Living/Dining Area
- En Suite to The Maldon (Plots 36, 44 & 52)
- Two double bedrooms to The Maldon (Plots 36, 44 & 52)
- Balcony
- Parking
- Utility Storage Cupboard



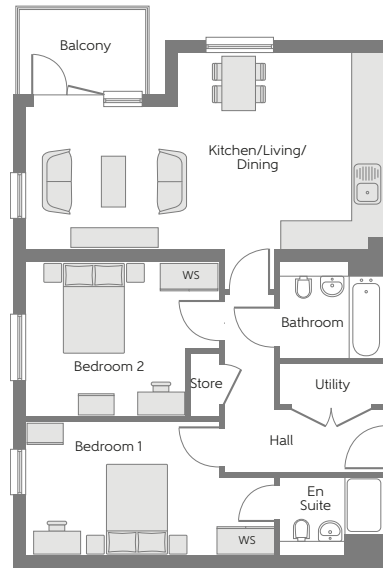
# Apartments

- Standard Artisan
- Bespoke Artisan
- Brand New Apartment Type



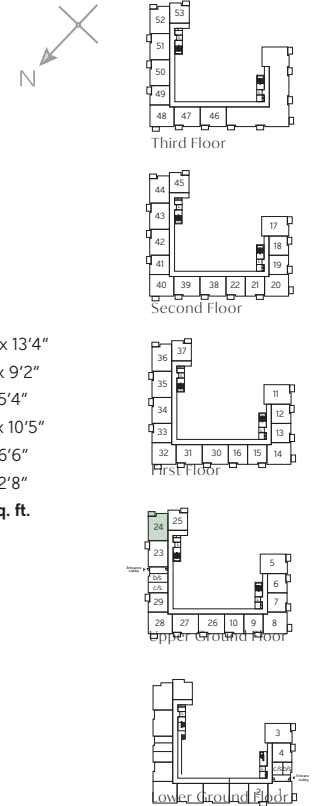
## Axwell Place (Block A1/A2)

Plot number 24



### The Melton (2DA) - Plot 24

Kitchen/Living/Dining	7.41m x 4.09m	24'3" x 13'4"
Bedroom 1	5.16m x 2.79m	16'9" x 9'2"
Bedroom 1 En Suite	2.15m x 1.65m	7'1" x 5'4"
Bedroom 2	4.01m x 3.19m	13'2" x 10'5"
Bathroom	2.15m x 2.00m	7'1" x 6'6"
Utility	2.15m x 8.50m	7'1" x 2'8"
<b>Total area</b>	<b>73.05 sq. m.</b>	<b>786 sq. ft.</b>



WS - Wardrobe Space (suggestion only, wardrobe not included)

**Furniture arrangements are for illustrative purposes only. Items are not included, nor to scale.**

The items shown in this key may be subject to change, and positions could vary from those indicated on this floorplan. Please refer to Sales Advisor for details of your selected plot. External finishes and landscaping may vary. Please refer to Sales Advisor for further details. All dimensions are approximate and should not be used for carpet sizes, appliance spaces or furniture. We operate a policy of continuous improvement and individual features such as kitchen and bathroom layouts, doors, windows, garages and elevational treatments may vary from time to time. Consequently these particulars should be treated as general guidance only and do not constitute a contract, part of a contract or a warranty.

### Summary points

- Apartment
- Maldon 2 Bathrooms  
Bampton 2 Bathroom
- Maldon 2 Bedrooms  
Bampton 2 Bedroom
- Maldon 786 Sq.ft.  
Bampton 564 Sq.ft.

### 5 key points (minimum)

ie

- Open-plan Living/Dining Area
- En Suite to bedroom 1
- Two double bedrooms
- Balcony
- Parking

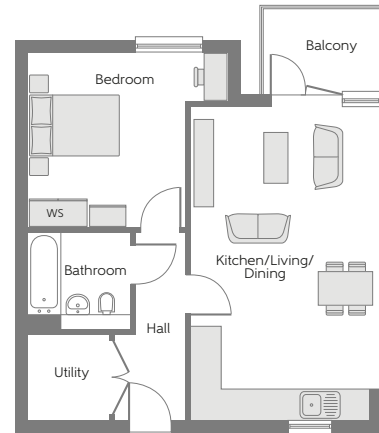
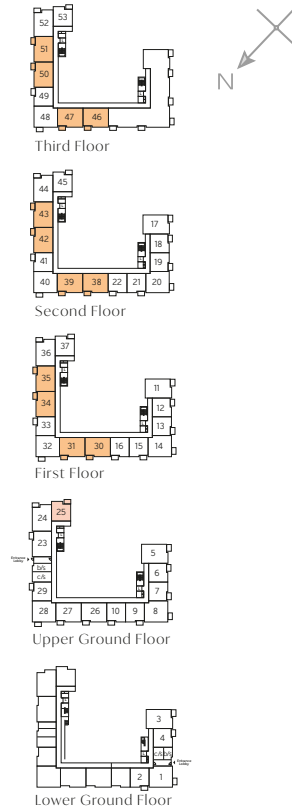
# Apartments

- Standard Artisan
- Bespoke Artisan
- Brand New Apartment Type



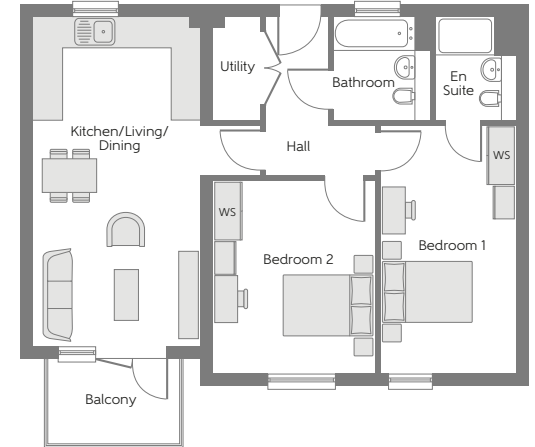
## Axwell Place (Block A1/A2)

Plot numbers 25, 30, 31, 34, 35, 38, 39, 42, 43, 46, 47, 50 & 51



The Barton (IBA) - Plot 25

Kitchen/Living/Dining	6.51m x 3.94m	21'4" x 12'9"
Bedroom	4.19m x 3.65m	13'7" x 12'0"
Bathroom	2.15m x 2.00m	7'1" x 6'6"
Utility	1.79m x 1.71m	5'9" x 5'6"
<b>Total area</b>	<b>51.75 sq. m.</b>	<b>557 sq. ft.</b>



The Kingston (2C) - Plots 30, 31, 34, 35, 38, 39, 42, 43, 46, 47, 50 & 51

Kitchen/Living/Dining	6.85m x 3.46m	22'5" x 11'3"
Bedroom 1	5.16m x 2.80m	16'9" x 9'2"
Bedroom 1 En Suite	2.15m x 1.65m	7'1" x 5'4"
Bedroom 2	4.01m x 3.36m	13'2" x 11'0"
Bathroom	2.15m x 2.00m	7'1" x 6'6"
Utility	2.15m x 1.00m	7'1" x 3'3"
<b>Total area</b>	<b>71.20 sq. m.</b>	<b>766 sq. ft.</b>

WS - Wardrobe Space (suggestion only, wardrobe not included)

**Furniture arrangements are for illustrative purposes only. Items are not included, nor to scale.**

The items shown in this key may be subject to change, and positions could vary from those indicated on this floorplan. Please refer to Sales Advisor for details of your selected plot. External finishes and landscaping may vary. Please refer to Sales Advisor for further details. All dimensions are approximate and should not be used for carpet sizes, appliance spaces or furniture. We operate a policy of continuous improvement and individual features such as kitchen and bathroom layouts, doors, windows, garages and elevational treatments may vary from time to time. Consequently these particulars should be treated as general guidance only and do not constitute a contract, part of a contract or a warranty.

### Summary points

- Apartment
- Barton 1 Bathroom  
Kingston 2 Bathrooms
- Barton 1 Bedroom  
Kingston 2 Bedrooms
- Barton 557 Sq.ft.  
Kingston 766 Sq.ft.

### 5 key points (minimum)

- ie
- Open-plan Living/Dining Area
- En Suite to The Kingston (Plots 30, 31, 34, 35, 38, 39, 42, 43, 46, 47, 50 & 51)
- Two double bedrooms to The Kingston (Plots 30, 31, 34, 35, 38, 39, 42, 43, 46, 47, 50 & 51)
- Balcony
- Parking
- Utility Storage Cupboard

# Apartments

- Standard Artisan
- Bespoke Artisan
- Brand New Apartment Type

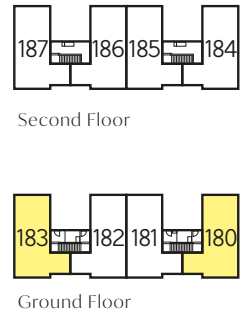
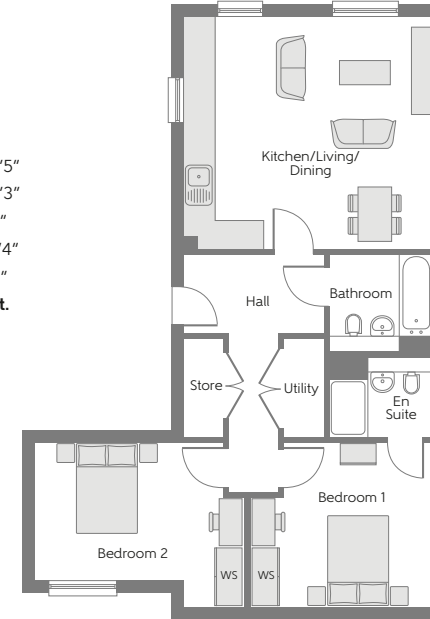


## Drayton Court (Block J1)

Plot numbers 180 & 183

### The Wareham (2M) – Plot 180 & 183

Kitchen/Living/Dining	4.83m x 3.51m	15'8" x 11'5"
Bedroom 1	3.79m x 3.43m	12'4" x 11'3"
Bedroom 1 En Suite	2.15m x 1.65m	7'1" x 5'4"
Bedroom 2	4.36m x 2.87m	14'3" x 9'4"
Bathroom	2.15m x 2.00m	7'1" x 6'6"
<b>Total area</b>	<b>71.14 sq. m.</b>	<b>766 sq. ft.</b>



WS - Wardrobe Space (suggestion only, wardrobe not included)

**Furniture arrangements are for illustrative purposes only. Items are not included, nor to scale.**

The items shown in this key may be subject to change, and positions could vary from those indicated on this floorplan. Please refer to Sales Advisor for details of your selected plot. External finishes and landscaping may vary. Please refer to Sales Advisor for further details. All dimensions are approximate and should not be used for carpet sizes, appliance spaces or furniture. We operate a policy of continuous improvement and individual features such as kitchen and bathroom layouts, doors, windows, garages and elevational treatments may vary from time to time. Consequently these particulars should be treated as general guidance only and do not constitute a contract, part of a contract or a warranty.

### Summary points

- Apartment
- 2 Bathrooms
- 2 Bedrooms

766 Sq.ft.

### 5 key points (minimum)

- ie
- Open-plan Kitchen/Dining/Living Area
- Two double bedrooms
- En Suite to bedroom 1
- Utility storage cupboard
- Parking

# Apartments

- Standard Artisan
- Bespoke Artisan
- Brand New Apartment Type

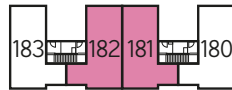


## Drayton Court (Block J1)

Plot numbers 181, 182, 184 & 187



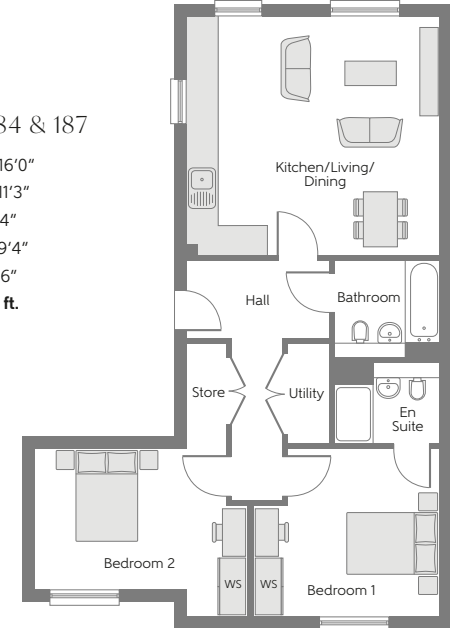
Second Floor



Ground Floor

### The Wetherby (2MA) – Plots 181, 182, 184 & 187

Kitchen/Living/Dining	5.17m x 4.87m	16'9" x 16'0"
Bedroom 1	3.79m x 3.43m	12'4" x 11'3"
Bedroom 1 En Suite	2.15m x 1.65m	7'1" x 5'4"
Bedroom 2	4.35m x 2.87m	14'3" x 9'4"
Bathroom	2.15m x 2.00m	7'1" x 6'6"
<b>Total area</b>	<b>71.14 sq. m.</b>	<b>766 sq. ft.</b>



WS - Wardrobe Space (suggestion only, wardrobe not included)

**Furniture arrangements are for illustrative purposes only. Items are not included, nor to scale.**

The items shown in this key may be subject to change, and positions could vary from those indicated on this floorplan. Please refer to Sales Advisor for details of your selected plot. External finishes and landscaping may vary. Please refer to Sales Advisor for further details. All dimensions are approximate and should not be used for carpet sizes, appliance spaces or furniture. We operate a policy of continuous improvement and individual features such as kitchen and bathroom layouts, doors, windows, garages and elevational treatments may vary from time to time. Consequently these particulars should be treated as general guidance only and do not constitute a contract, part of a contract or a warranty.

#### Summary points

- Apartment
- 2 Bathrooms
- 2 Bedrooms

#### 5 key points (minimum)

- ie
- Open-plan Kitchen/Dining/Living Area
- Two double bedrooms
- En Suite to bedroom 1
- Utility storage cupboard
- Parking

766 Sq.ft.

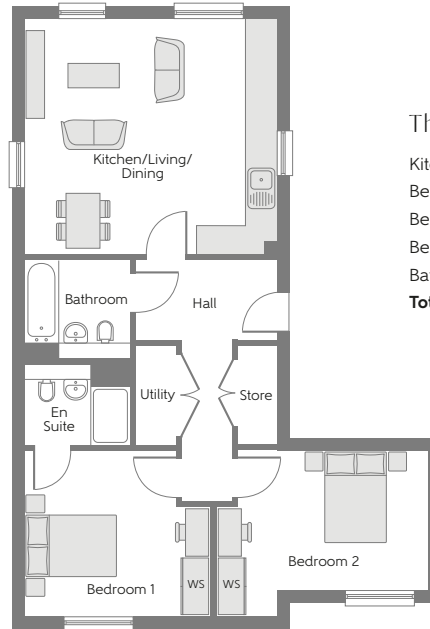
# Apartments

- Standard Artisan
- Bespoke Artisan
- Brand New Apartment Type



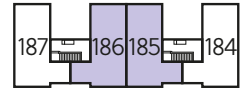
## Drayton Court (Block J1)

Plot numbers 185 & 186

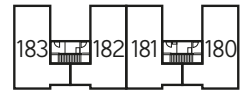


### The Kingsclere (2MB) - Plot 185 & 186

Kitchen/Living/Dining	5.16m x 4.83m	16'9" x 16'0"
Bedroom 1	3.79m x 3.43m	12'4" x 11'3"
Bedroom 1 En Suite	2.15m x 1.65m	7'1" x 5'4"
Bedroom 2	4.35m x 2.87m	14'3" x 9'4"
Bathroom	2.15m x 2.00m	7'1" x 6'6"
<b>Total area</b>	<b>71.10 sq. m.</b>	<b>765 sq. ft.</b>



Second Floor



Ground Floor

WS - Wardrobe Space (suggestion only, wardrobe not included)

**Furniture arrangements are for illustrative purposes only. Items are not included, nor to scale.**

The items shown in this key may be subject to change, and positions could vary from those indicated on this floorplan. Please refer to Sales Advisor for details of your selected plot. External finishes and landscaping may vary. Please refer to Sales Advisor for further details. All dimensions are approximate and should not be used for carpet sizes, appliance spaces or furniture. We operate a policy of continuous improvement and individual features such as kitchen and bathroom layouts, doors, windows, garages and elevational treatments may vary from time to time. Consequently these particulars should be treated as general guidance only and do not constitute a contract, part of a contract or a warranty.

### Summary points

 Apartment

 2 Bathrooms

 2 Bedrooms

 765 Sq.ft.

### 5 key points (minimum)

ie

- Open-plan Kitchen/Dining/Living Area
- Two double bedrooms
- En Suite to bedroom 1
- Utility storage cupboard
- Parking

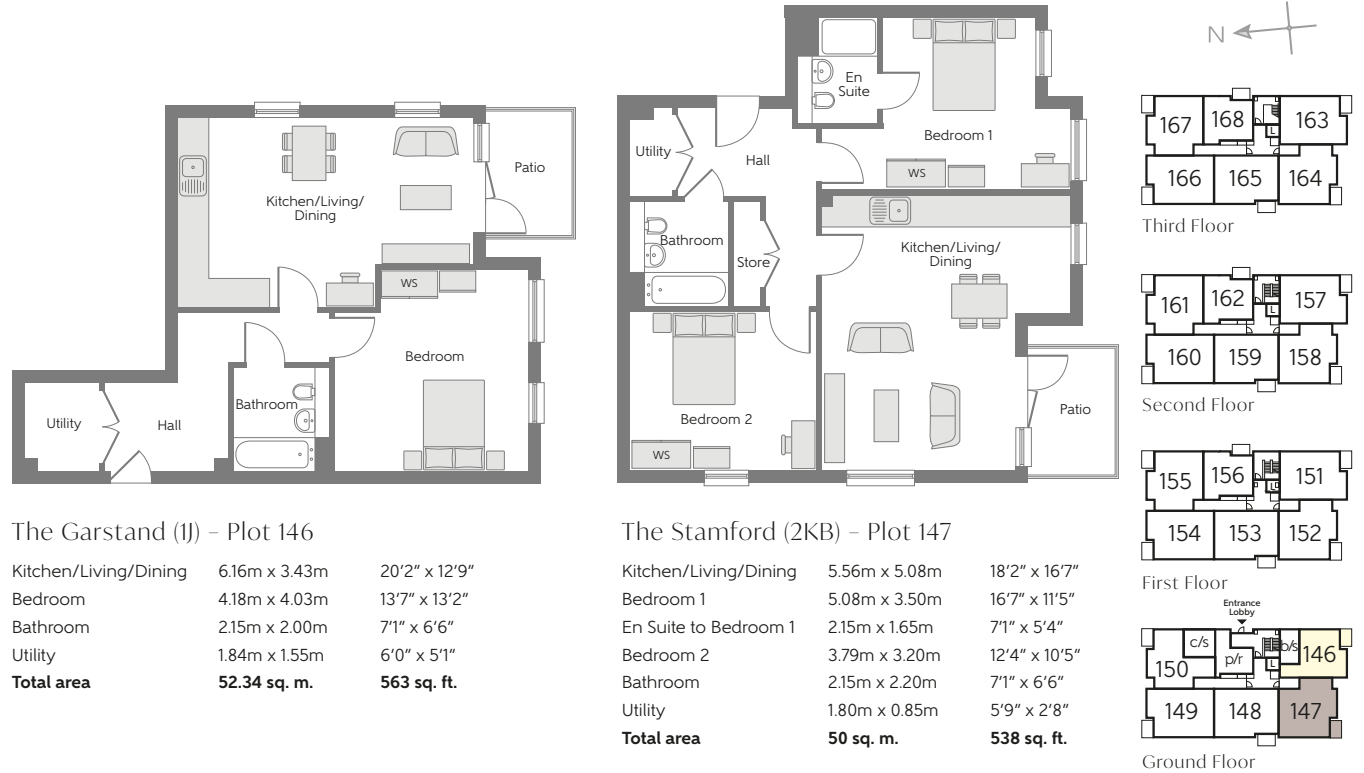
# Apartments

- Standard Artisan
- Bespoke Artisan
- Brand New Apartment Type



## Haverford Tower (Block G1)

Plot numbers 146 & 147



WS - Wardrobe Space (suggestion only, wardrobe not included)

**Furniture arrangements are for illustrative purposes only. Items are not included, nor to scale.**

The items shown in this key may be subject to change, and positions could vary from those indicated on this floorplan. Please refer to Sales Advisor for details of your selected plot. External finishes and landscaping may vary. Please refer to Sales Advisor for further details. All dimensions are approximate and should not be used for carpet sizes, appliance spaces or furniture. We operate a policy of continuous improvement and individual features such as kitchen and bathroom layouts, doors, windows, garages and elevational treatments may vary from time to time. Consequently these particulars should be treated as general guidance only and do not constitute a contract, part of a contract or a warranty.

### Summary points

- Apartment
- Garstand 1 Bathroom  
Stamford 2 Bathrooms
- Garstand 1 Bedroom  
Stamford 2 Bedrooms
- Garstand 563 Sq.ft.  
Stamford 538 Sq.ft.

### 5 key points (minimum)

- ie
- Open-plan Living/Dining Area
- En Suite to The Stamford (Plot 147)
- Two double bedrooms to The Stamford (Plot 147)
- Balcony
- Parking
- Utility Storage Cupboard

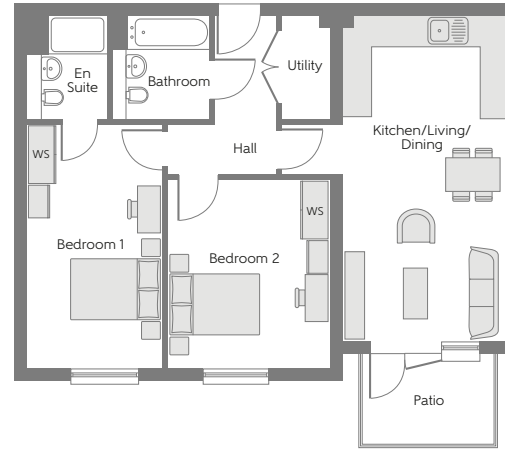
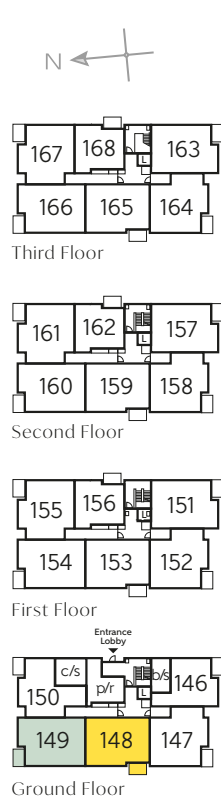
# Apartments

- Standard Artisan
- Bespoke Artisan
- Brand New Apartment Type



## Haverford Tower (Block G1)

Plot numbers 148 & 149

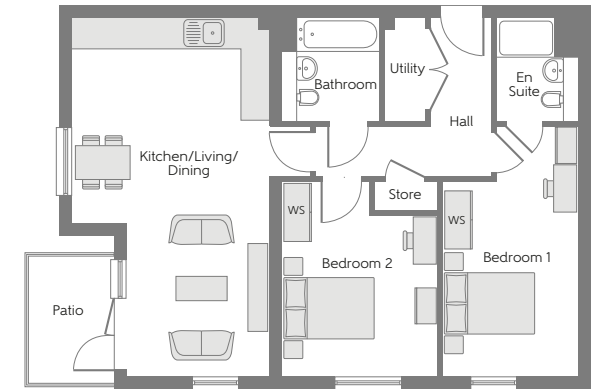


### The Lymington (2CC) - Plot 148

Kitchen/Living/Dining	6.77m x 3.46m	22'2" x 11'3"
Bedroom 1	5.08m x 2.80m	16'7" x 9'2"
En Suite to Bedroom 1	2.15m x 1.65m	7'1" x 5'4"
Bedroom 2	3.93m x 3.36m	12'9" x 11'1"
Bathroom	2.15m x 2.00m	7'1" x 6'6"
Utility	2.15m x 1.04m	7'11" x 3'4"
<b>Total area</b>	<b>70.42 sq. m.</b>	<b>758 sq. ft.</b>

### The Midhurst (2DC) - Plot 149

Kitchen/Living/Dining	7.33m x 4.09m	24'1" x 13'4"
Bedroom 1	5.08m x 2.79m	16'7" x 9'2"
En Suite to Bedroom 1	2.15m x 1.65m	7'1" x 5'4"
Bedroom 2	3.93m x 3.19m	12'9" x 10'5"
Bathroom	2.15m x 2.00m	7'11" x 6'6"
Utility	2.15m x 0.85m	7'11" x 2'8"
<b>Total area</b>	<b>72.19 sq. m.</b>	<b>777 sq. ft.</b>



WS - Wardrobe Space (suggestion only, wardrobe not included)

**Furniture arrangements are for illustrative purposes only. Items are not included, nor to scale.**

The items shown in this key may be subject to change, and positions could vary from those indicated on this floorplan. Please refer to Sales Advisor for details of your selected plot. External finishes and landscaping may vary. Please refer to Sales Advisor for further details. All dimensions are approximate and should not be used for carpet sizes, appliance spaces or furniture. We operate a policy of continuous improvement and individual features such as kitchen and bathroom layouts, doors, windows, garages and elevational treatments may vary from time to time. Consequently these particulars should be treated as general guidance only and do not constitute a contract, part of a contract or a warranty.

### Summary points

Apartment

2 Bathrooms

2 Bedrooms




Lymington 758 Sq.ft.  
Midhurst 777 Sq.ft.

### 5 key points (minimum)

ie

- Open-plan Kitchen/Dining/Living Area
- Two double bedrooms
- En Suite to bedroom 1
- Utility storage cupboard
- Parking
- Patio

# Apartments

-  Standard Artisan
-  Bespoke Artisan
-  Brand New Apartment Type



## Haverford Tower (Block G1)

Plot numbers 150, 151, 157 & 163

**The Hastings (1L) – Plot 150**

Kitchen/Living/Dining	5.70m x 4.50m	18'7" x 14'8"
Bedroom	3.79m x 3.35m	12'4" x 11'0"
Bathroom	2.15m x 2.00m	7'1" x 6'6"
Utility	1.80m x 1.08m	5'9" x 3'5"
<b>Total area</b>	<b>62.82 sq. m.</b>	<b>676 sq. ft.</b>

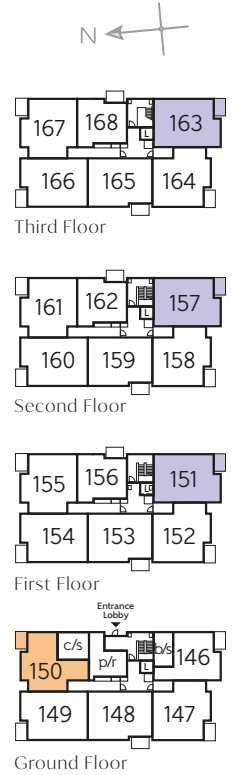
**The Caxton (2DD) – Plots 151, 157 & 163**

Kitchen/Living/Dining	7.41m x 4.22m	24'3" x 13'9"
Bedroom 1	5.16m x 2.79m	16'9" x 9'2"
En Suite to Bedroom 1	2.15m x 1.65m	7'1" x 5'4"
Bedroom 2	4.01m x 3.20m	13'2" x 10'5"
Bathroom	2.15m x 2.00m	7'1" x 6'6"
Utility	2.15m x 0.85m	7'1" x 2'8"
<b>Total area</b>	<b>71.22 sq. m.</b>	<b>767 sq. ft.</b>





WS - Wardrobe Space (suggestion only, wardrobe not included)

**Furniture arrangements are for illustrative purposes only. Items are not included, nor to scale.**






The items shown in this key may be subject to change, and positions could vary from those indicated on this floorplan. Please refer to Sales Advisor for details of your selected plot. External finishes and landscaping may vary. Please refer to Sales Advisor for further details. All dimensions are approximate and should not be used for carpet sizes, appliance spaces or furniture. We operate a policy of continuous improvement and individual features such as kitchen and bathroom layouts, doors, windows, garages and elevational treatments may vary from time to time. Consequently these particulars should be treated as general guidance only and do not constitute a contract, part of a contract or a warranty.



### Summary points

-  Apartment
-  Hastings 1 Bathroom  
Caxton 2 Bathrooms
-  Hastings 1 Bedroom  
Caxton 2 Bedrooms
-  Hastings 676 Sq.ft.  
Caxton 767 Sq.ft.

### 5 key points (minimum)

- ie
-  Open-plan Kitchen/Dining/Living Area
-  Large storage cupboard to The Hastings (Plot 150)
-  Two double bedrooms to The Caxton (Plots 151, 157 & 163)
-  Patio
-  Parking



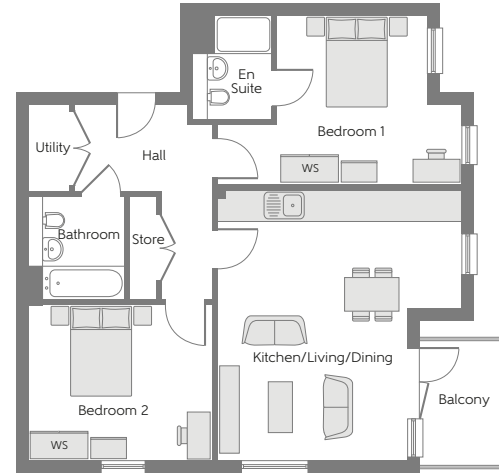
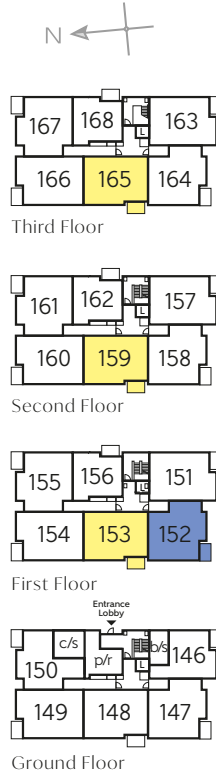
# Apartments

- Standard Artisan
- Bespoke Artisan
- Brand New Apartment Type



## Haverford Tower (Block G1)

Plot numbers 152, 153, 159 & 165

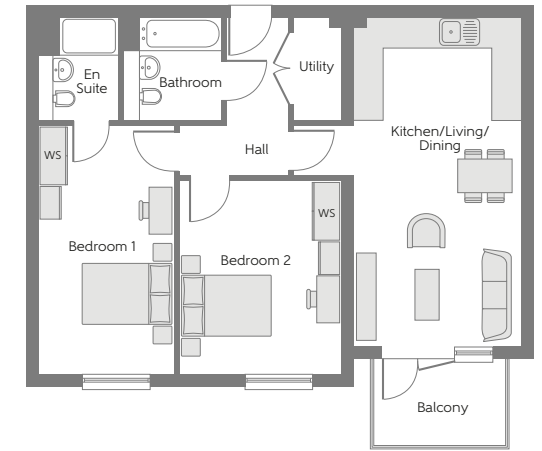


### The Shipston (2KA) - Plot 152

Kitchen/Living/Dining	5.60m x 5.08m	18'4" x 16'7"
Bedroom 1	5.08m x 3.50m	16'7" x 11'5"
En Suite to Bedroom 1	2.15m x 1.65m	7'1" x 5'4"
Bedroom 2	3.79m x 3.22m	12'4" x 10'6"
Bathroom	2.15m x 2.00m	7'1" x 6'6"
Utility	1.80m x 0.85m	5'9" x 2'8"
<b>Total area</b>	<b>70.43 sq. m.</b>	<b>758 sq. ft.</b>

### The Ludlow (2CB) - Plot 153, 159 & 165

Kitchen/Living/Dining	6.85m x 3.46m	22'5" x 11'3"
Bedroom 1	5.16m x 2.80m	16'9" x 9'2"
Ensuite to Bedroom 1	2.15m x 1.65m	7'1" x 5'4"
Bedroom 2	4.01m x 3.37m	13'2" x 11'1"
Bathroom	2.15m x 2.00m	7'1" x 6'6"
Utility	2.15m x 1.04m	7'1" x 3'4"
<b>Total area</b>	<b>70.82 sq. m.</b>	<b>762 sq. ft.</b>



WS - Wardrobe Space (suggestion only, wardrobe not included)

**Furniture arrangements are for illustrative purposes only. Items are not included, nor to scale.**

The items shown in this key may be subject to change, and positions could vary from those indicated on this floorplan. Please refer to Sales Advisor for details of your selected plot. External finishes and landscaping may vary. Please refer to Sales Advisor for further details. All dimensions are approximate and should not be used for carpet sizes, appliance spaces or furniture. We operate a policy of continuous improvement and individual features such as kitchen and bathroom layouts, doors, windows, garages and elevational treatments may vary from time to time. Consequently these particulars should be treated as general guidance only and do not constitute a contract, part of a contract or a warranty.

### Summary points



Apartment



Shipston 1 Bathroom  
Ludlow 2 Bathrooms



Shipston 1 Bedroom  
Ludlow 2 Bedrooms



Shipston 758 Sq.ft.  
Ludlow 762 Sq.ft.

### 5 key points (minimum)

ie

- Open-plan Kitchen/Dining/Living Area
- Two double bedrooms
- En Suite to Bedroom 1
- Balcony
- Parking

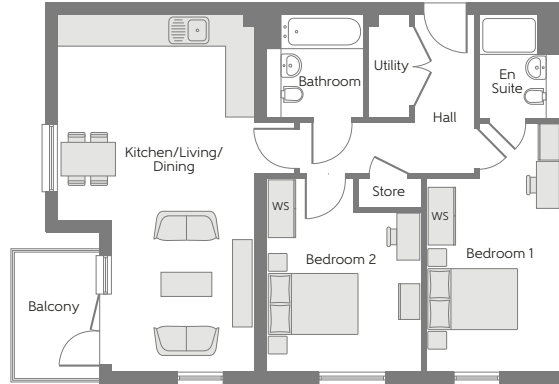
# Apartments

- Standard Artisan
- Bespoke Artisan
- Brand New Apartment Type



## Haverford Tower (Block G1)

Plot numbers 154, 155, 160 & 166

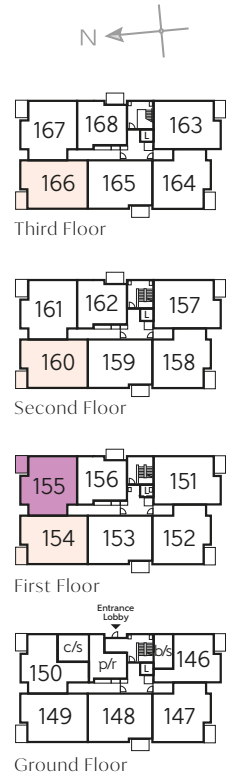
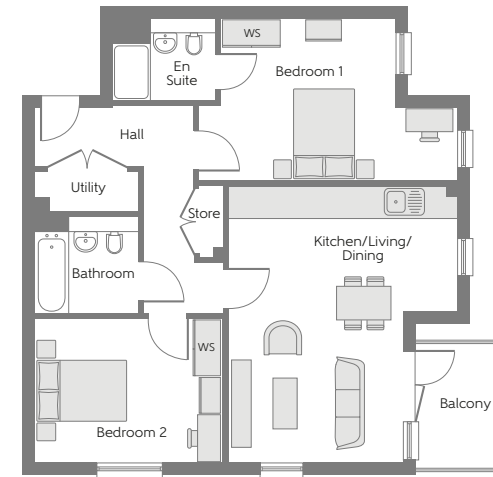


### The Tetbury (2LA) - Plot 155

Kitchen/Living/Dining	5.75m x 3.63m	18'8" x 11'9"
Bedroom 1	5.36m x 3.35m	17'6" x 11'0"
En Suite to Bedroom 1	2.15m x 1.70m	7'1" x 5'6"
Bedroom 2	3.89m x 3.00m	12'8" x 9'8"
Bathroom	2.15m x 2.00m	7'1" x 6'6"
Utility	2.15m x 0.85m	7'1" x 2'8"
<b>Total area</b>	<b>71.14 sq. m.</b>	<b>766 sq. ft.</b>

### The Maldon (2D) - Plots 154, 160 & 166

Kitchen/Living/Dining	7.41m x 4.09m	24'3" x 13'4"
Bedroom 1	5.16m x 2.79m	16'9" x 9'2"
En Suite to Bedroom 1	2.15m x 1.65m	7'1" x 5'4"
Bedroom 2	4.01m x 3.19m	13'2" x 10'5"
Bathroom	2.15m x 2.00m	7'1" x 6'6"
Utility	2.15m x 0.85m	7'1" x 2'8"
<b>Total area</b>	<b>73.05 sq. m.</b>	<b>786 sq. ft.</b>



WS - Wardrobe Space (suggestion only, wardrobe not included)

**Furniture arrangements are for illustrative purposes only. Items are not included, nor to scale.**

The items shown in this key may be subject to change, and positions could vary from those indicated on this floorplan. Please refer to Sales Advisor for details of your selected plot. External finishes and landscaping may vary. Please refer to Sales Advisor for further details. All dimensions are approximate and should not be used for carpet sizes, appliance spaces or furniture. We operate a policy of continuous improvement and individual features such as kitchen and bathroom layouts, doors, windows, garages and elevational treatments may vary from time to time. Consequently these particulars should be treated as general guidance only and do not constitute a contract, part of a contract or a warranty.

### Summary points

Apartment

2 Bathrooms

2 Bedrooms

Maldon 786 Sq.ft.  
Tetbury 766 Sq.ft.

### 5 key points (minimum)

ie

- Open-plan Kitchen/Dining/Living Area
- Two double bedrooms
- En Suite to Bedroom 1
- Balcony
- Parking

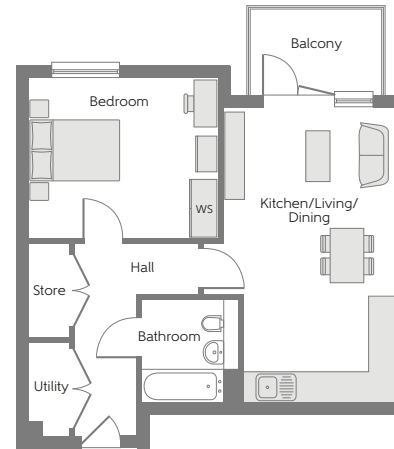
# Apartments

- Standard Artisan
- Bespoke Artisan
- Brand New Apartment Type



## Haverford Tower (Block G1)

Plot numbers 156, 158 & 164

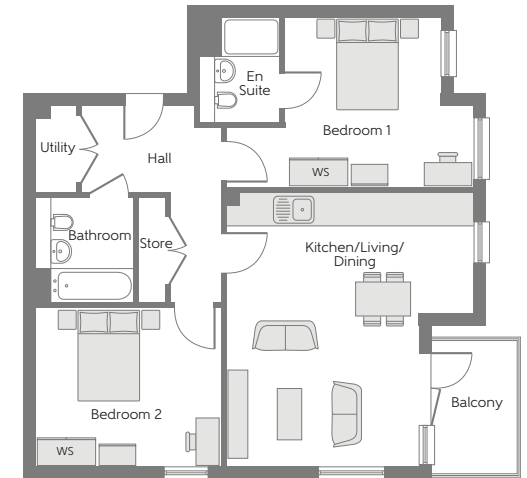


### The Selby (2K) – Plots 158 & 164

Kitchen/Living/Dining	5.60m x 5.08m	18'4" x 16'7"
Bedroom 1	5.08m x 3.50m	16'7" x 11'5"
En Suite to Bedroom 1	2.15m x 1.65m	7'1" x 5'4"
Bedroom 2	3.79m x 3.26m	12'4" x 10'7"
Bathroom	2.15m x 2.00m	7'1" x 6'6"
Utility	1.80m x 0.85m	5'4" x 2'8"
<b>Total area</b>	<b>71.10 sq. m.</b>	<b>765 sq. ft.</b>

### The Chepstow (1EA) – Plot 156

Kitchen/Living/Dining	6.14m x 3.62m	20'1" x 11'9"
Bedroom	3.93m x 3.34m	12'9" x 10'9"
Bathroom	2.15m x 2.00m	7'1" x 6'6"
Utility	1.94m x 0.85m	6'4" x 2'8"
<b>Total area</b>	<b>50.11 sq. m.</b>	<b>539 sq. ft.</b>



WS - Wardrobe Space (suggestion only, wardrobe not included)

**Furniture arrangements are for illustrative purposes only. Items are not included, nor to scale.**

The items shown in this key may be subject to change, and positions could vary from those indicated on this floorplan. Please refer to Sales Advisor for details of your selected plot. External finishes and landscaping may vary. Please refer to Sales Advisor for further details. All dimensions are approximate and should not be used for carpet sizes, appliance spaces or furniture. We operate a policy of continuous improvement and individual features such as kitchen and bathroom layouts, doors, windows, garages and elevational treatments may vary from time to time. Consequently these particulars should be treated as general guidance only and do not constitute a contract, part of a contract or a warranty.

### Summary points

- Apartment
- Selby 1 Bathroom  
Chepstow 2 Bathrooms
- Selby 1 Bedroom  
Chepstow 2 Bedrooms
- Chepstow 539 Sq.ft.  
Selby 765 Sq.ft.

### 5 key points (minimum)

- ie
- Open-plan Living/Dining Area
- En Suite to The Selby (Plots 158 & 164)
- Two double bedrooms to The Selby (Plots 158 & 164)
- Balcony
- Parking
- Utility Storage Cupboard

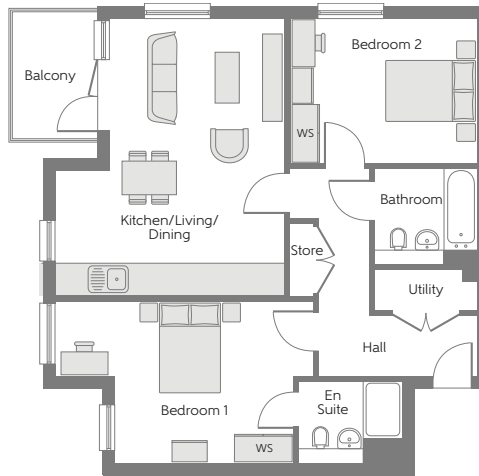
# Apartments

- Standard Artisan
- Bespoke Artisan
- Brand New Apartment Type



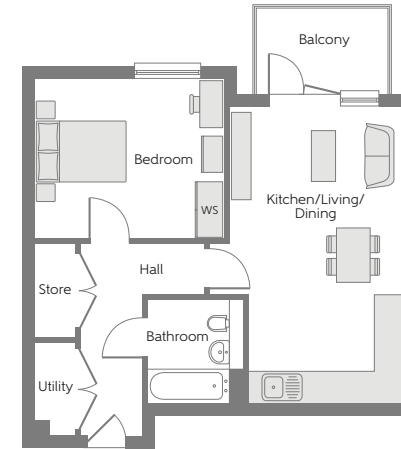
## Haverford Tower (Block G1)

Plot numbers 161, 162, 167 & 168



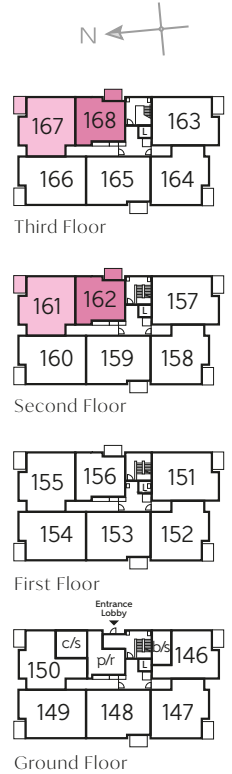
The Sudbury (2L) - Plots 161 & 167

Kitchen/Living/Dining	5.73m x 4.75m	18'8" x 15'6"
Bedroom 1	5.36m x 3.37m	17'6" x 11'1"
En Suite to Bedroom 1	2.15m x 1.71m	7'1" x 5'6"
Bedroom 2	3.89m x 3.00m	12'8" x 9'8"
Bathroom	2.15m x 2.00m	7'1" x 6'6"
Utility	2.15m x 0.85m	7'1" x 2'8"
<b>Total area</b>	<b>71.27 sq. m.</b>	<b>767 sq. ft.</b>



The Charley (1E) - Plots 162 & 168

Kitchen/Living/Dining	6.18m x 3.62m	6'2" x 11'9"
Bedroom	3.93m x 3.34m	12'9" x 10'9"
Bathroom	2.15m x 2.00m	7'1" x 6'6"
Utility	1.94m x 0.85m	6'4" x 2'8"
<b>Total area</b>	<b>50.20 sq. m.</b>	<b>540 sq. ft.</b>



WS - Wardrobe Space (suggestion only, wardrobe not included)

**Furniture arrangements are for illustrative purposes only. Items are not included, nor to scale.**

The items shown in this key may be subject to change, and positions could vary from those indicated on this floorplan. Please refer to Sales Advisor for details of your selected plot. External finishes and landscaping may vary. Please refer to Sales Advisor for further details. All dimensions are approximate and should not be used for carpet sizes, appliance spaces or furniture. We operate a policy of continuous improvement and individual features such as kitchen and bathroom layouts, doors, windows, garages and elevational treatments may vary from time to time. Consequently these particulars should be treated as general guidance only and do not constitute a contract, part of a contract or a warranty.

### Summary points



Apartment



Sudbury 2 Bathrooms  
Charley 1 Bathroom



Sudbury 2 Bedrooms  
Charley 1 Bedroom



Sudbury 767 Sq.ft.  
Charley 540 Sq.ft.

### 5 key points (minimum)

ie

- Open-plan Living/Dining Area
- En Suite to The Sudbury (Plots 161 & 167)
- Two double bedrooms to The Sudbury (Plots 161 & 167)
- Balcony
- Parking
- Utility Storage Cupboard

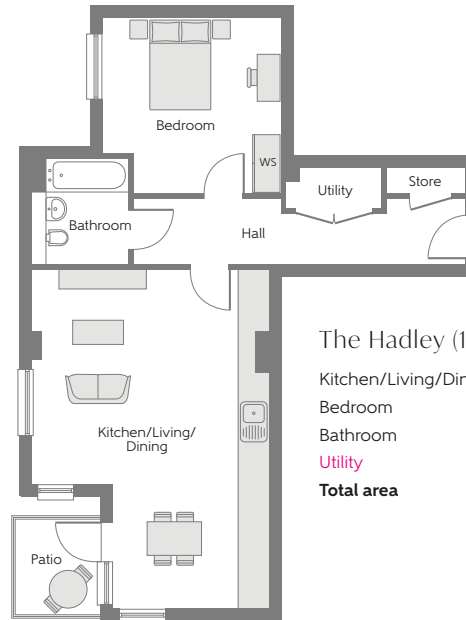
# Apartments

- Standard Artisan
- Bespoke Artisan
- Brand New Apartment Type



## Mander Court (Block H1)

Plot number 169



### The Hadley (1K) - Plot 169

Kitchen/Living/Dining	7.06m x 4.94m	23'3" x 16'2"
Bedroom	3.71m x 3.67m	12'2" x 12'6"
Bathroom	2.15m x 2.00m	7'1" x 6'6"
Utility	1.78m x 0.89m	5'8" x 2'9"
<b>Total area</b>	<b>59.25 sq. m.</b>	<b>638 sq. ft.</b>



Second Floor



First Floor



Ground Floor

WS - Wardrobe Space (suggestion only, wardrobe not included)

**Furniture arrangements are for illustrative purposes only. Items are not included, nor to scale.**

The items shown in this key may be subject to change, and positions could vary from those indicated on this floorplan. Please refer to Sales Advisor for details of your selected plot. External finishes and landscaping may vary. Please refer to Sales Advisor for further details. All dimensions are approximate and should not be used for carpet sizes, appliance spaces or furniture. We operate a policy of continuous improvement and individual features such as kitchen and bathroom layouts, doors, windows, garages and elevational treatments may vary from time to time. Consequently these particulars should be treated as general guidance only and do not constitute a contract, part of a contract or a warranty.

### Summary points



Apartment



1 Bathroom



1 Bedroom



638 Sq.ft.

### 5 key points (minimum)

ie

- Open-plan Kitchen/Dining/Living Area
- Separate bathroom
- Utility storage cupboard
- Parking
- Patio

# Apartments

- Standard Artisan
- Bespoke Artisan
- Brand New Apartment Type



## Mander Court (Block H1)

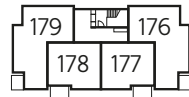
Plot numbers 170 & 171

### Summary points

- Apartment
- Saffron 2 Bathrooms  
Dunster 1 Bathroom
- Saffron 2 Bedrooms  
Dunster 1 Bedroom
- Saffron 772 Sq.ft.  
Dunster 540 Sq.ft.

### 5 key points (minimum)

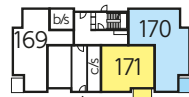
- ie
- Open-plan Living/Dining Area
  - En Suite to The Saffron (Plot 170)
  - Two double bedrooms to The Saffron (Plot 170)
  - Balcony
  - Parking
  - Utility Storage Cupboard



Second Floor



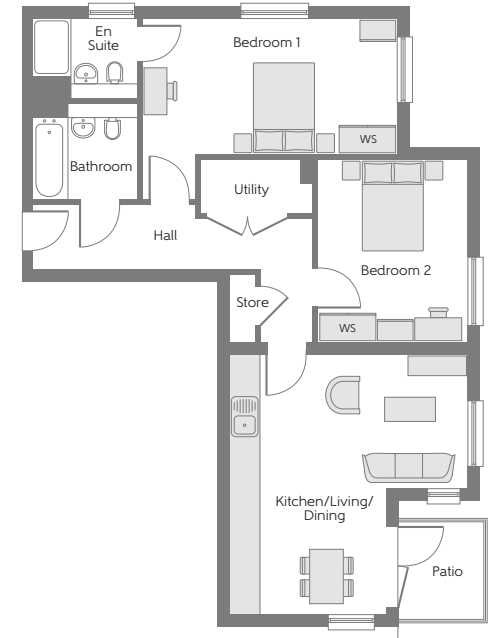
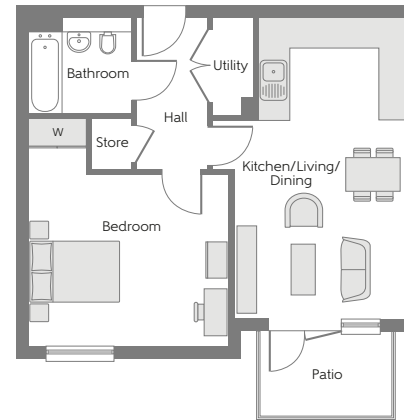
First Floor



Ground Floor

### The Saffron (2JA) - Plot 170

Kitchen/Living/Dining	5.55m x 4.94m	17'5" x 16'2"
Bedroom 1	5.28m x 2.83m	17'3" x 9'3"
En Suite to Bedroom 1	2.15m x 1.65m	7'1" x 5'4"
Bedroom 2	3.75m x 3.09m	12'3" x 10'1"
Bathroom	2.15m x 2.00m	7'1" x 6'6"
Utility	2.35m x 1.05m	7'7" x 3'4"
<b>Total area</b>	<b>71.68 sq. m.</b>	<b>772 sq. ft.</b>



### The Dunster (1FC) - Plot 171

Kitchen/Living/Dining	6.17m x 3.66m	20'2" x 12'0"
Bedroom	4.11m x 3.49m	13'5" x 11'4"
Bathroom	2.15m x 2.00m	7'1" x 6'6"
Utility	2.00m x 0.85m	6'6" x 2'8"
<b>Total area</b>	<b>50.17 sq. m.</b>	<b>540 sq. ft.</b>

WS - Wardrobe Space (suggestion only, wardrobe not included)

**Furniture arrangements are for illustrative purposes only. Items are not included, nor to scale.**

The items shown in this key may be subject to change, and positions could vary from those indicated on this floorplan. Please refer to Sales Advisor for details of your selected plot. External finishes and landscaping may vary. Please refer to Sales Advisor for further details. All dimensions are approximate and should not be used for carpet sizes, appliance spaces or furniture. We operate a policy of continuous improvement and individual features such as kitchen and bathroom layouts, doors, windows, garages and elevational treatments may vary from time to time. Consequently these particulars should be treated as general guidance only and do not constitute a contract, part of a contract or a warranty.

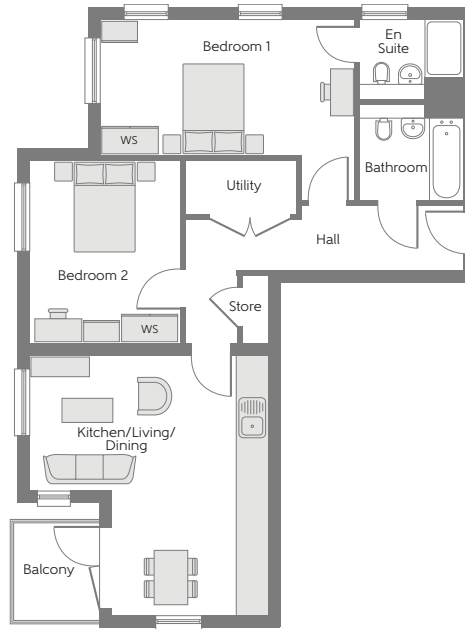
# Apartments

- Standard Artisan
- Bespoke Artisan
- Brand New Apartment Type



## Mander Court (Block H1)

Plot numbers 172, 173, 174, 175, 176, 177, 178 & 179



### The Ripley (2) – Plots 172, 175, 176 & 179

Kitchen/Living/Dining	5.39m x 4.94m	17'8" x 16'2"
Bedroom 1	5.28m x 2.83m	17'3" x 9'3"
En Suite to Bedroom 1	2.15m x 1.65m	7'1" x 5'4"
Bedroom 2	3.79m x 3.08m	12'4" x 10'1"
Bathroom	2.15m x 2.00m	7'1" x 6'6"
Utility	2.34m x 1.12m	7'7" x 3'7"
<b>Total area</b>	<b>72.40 sq. m.</b>	<b>779 sq. ft.</b>



Second Floor



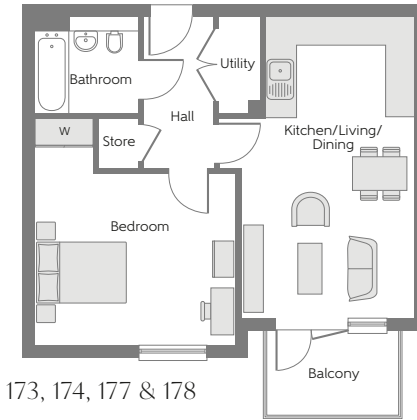
First Floor



Ground Floor

### The Dudley (1FB) – Plots 173, 174, 177 & 178

Kitchen/Living/Dining	6.25m x 3.60m	20'5" x 11'8"
Bedroom	4.15m x 3.57m	13'6" x 11'7"
Bathroom	2.15m x 2.00m	7'1" x 6'6"
Utility	2.00m x 0.85m	6'6" x 2'8"
<b>Total area</b>	<b>50.80 sq. m.</b>	<b>547 sq. ft.</b>



WS - Wardrobe Space (suggestion only, wardrobe not included)

**Furniture arrangements are for illustrative purposes only. Items are not included, nor to scale.**

The items shown in this key may be subject to change, and positions could vary from those indicated on this floorplan. Please refer to Sales Advisor for details of your selected plot. External finishes and landscaping may vary. Please refer to Sales Advisor for further details. All dimensions are approximate and should not be used for carpet sizes, appliance spaces or furniture. We operate a policy of continuous improvement and individual features such as kitchen and bathroom layouts, doors, windows, garages and elevational treatments may vary from time to time. Consequently these particulars should be treated as general guidance only and do not constitute a contract, part of a contract or a warranty.

#### Summary points

- Apartment
- Ripley 2 Bathrooms  
Dudley 1 Bathroom
- Ripley 2 Bedrooms  
Dudley 1 Bedroom
- Ripley 779 Sq.ft.  
Dudley 547 Sq.ft.

#### 5 key points (minimum)

- ie
- Open-plan Living/Dining Area
- En Suite to The Ripley (Plots 172, 175, 176 & 179)
- Two double bedrooms to The Ripley (Plots 172, 175, 176 & 179)
- Balcony
- Parking
- Utility Storage Cupboard

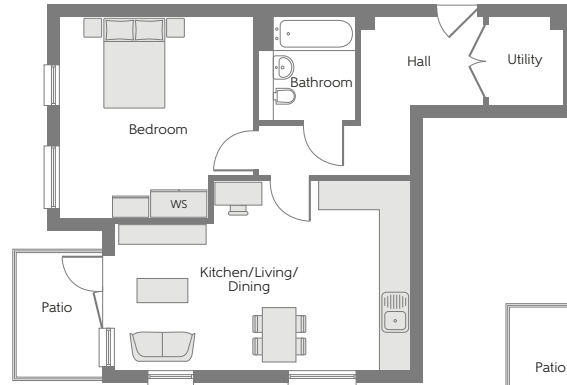
# Apartments

- Standard Artisan
- Bespoke Artisan
- Brand New Apartment Type



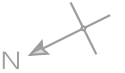
## Meridian Court (Block F1)

Plot numbers 123 & 124



### The Garstand (1J) - Plot 123

Kitchen/Living/Dining	6.15m x 3.43m	20'2" x 12'9"
Bedroom	4.18m x 4.03m	13'7" x 13'2"
Bathroom	2.15m x 2.00m	7'1" x 6'6"
Utility	1.83m x 1.55m	6'0" x 5'1"
<b>Total area</b>	<b>52.34 sq. m.</b>	<b>563 sq. ft.</b>



Third Floor



Second Floor



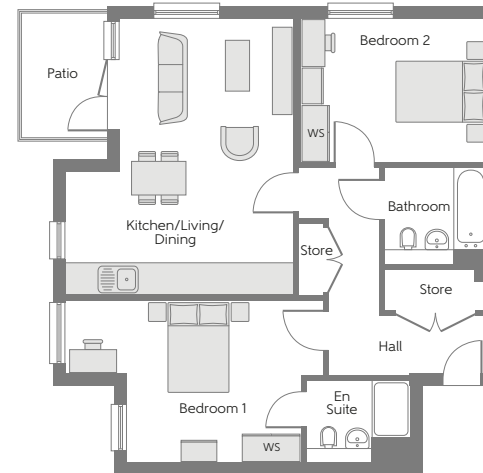
First Floor



Ground Floor

### The Waltham (2LB) - Plot 124

Kitchen/Living/Dining	5.71m x 4.75m	18'7" x 15'6"
Bedroom 1	5.36m x 3.35m	17'6" x 11'0"
En Suite to Bedroom 1	2.15m x 1.71m	7'1" x 5'6"
Bedroom 2	3.90m x 2.96m	12'8" x 9'7"
Bathroom	2.15m x 2.00m	7'1" x 6'6"
Utility	2.14m x 0.85m	7'1" x 2'8"
<b>Total area</b>	<b>54.78 sq. m.</b>	<b>590 sq. ft.</b>



WS - Wardrobe Space (suggestion only, wardrobe not included)

**Furniture arrangements are for illustrative purposes only. Items are not included, nor to scale.**

The items shown in this key may be subject to change, and positions could vary from those indicated on this floorplan. Please refer to Sales Advisor for details of your selected plot. External finishes and landscaping may vary. Please refer to Sales Advisor for further details. All dimensions are approximate and should not be used for carpet sizes, appliance spaces or furniture. We operate a policy of continuous improvement and individual features such as kitchen and bathroom layouts, doors, windows, garages and elevational treatments may vary from time to time. Consequently these particulars should be treated as general guidance only and do not constitute a contract, part of a contract or a warranty.

### Summary points



Apartment



Garstand 1 Bathroom  
Waltham 2 Bathrooms



Garstand 1 Bedroom  
Waltham 2 Bedrooms



Garstand 563 Sq.ft.  
Waltham 590 Sq.ft.

### 5 key points (minimum)

ie

- Open-plan Living/Dining Area
- En Suite to The Waltham (Plot 124)
- Two double bedrooms to The Waltham (Plot 124)
- Balcony
- Parking
- Utility Storage Cupboard



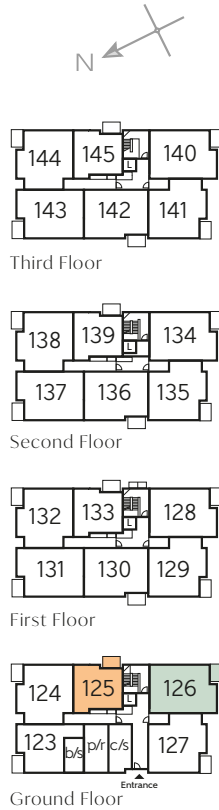
# Apartments

- Standard Artisan
- Bespoke Artisan
- Brand New Apartment Type



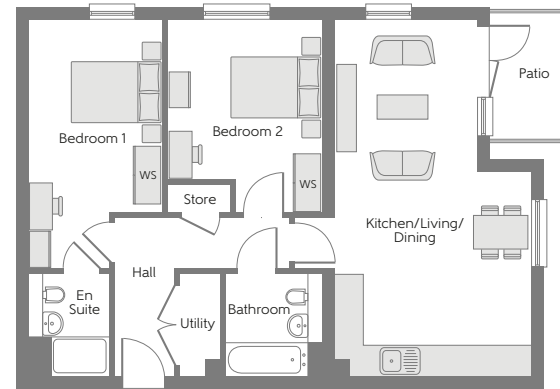
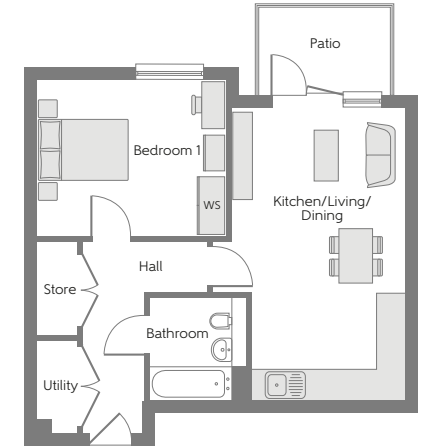
## Meridian Court (Block F1)

Plot numbers 125 & 126



### The Chester (1EB) – Plot 125

Kitchen/Living/Dining	6.10m x 3.62m	20'0" x 11'9"
Bedroom	3.93m x 3.28m	12'9" x 10'7"
Bathroom	2.15m x 2.00m	7'1" x 6'6"
Utility	1.94m x 0.85m	6'4" x 2'8"
<b>Total area</b>	<b>70.67sq. m.</b>	<b>761 sq. ft.</b>



### The Midhurst (2DC) – Plot 126

Kitchen/Living/Dining	7.33m x 4.09m	24'1" x 13'4"
Bedroom 1	5.08m x 2.79m	16'7" x 9'2"
En Suite to Bedroom 1	2.15m x 1.65m	7'11" x 5'4"
Bedroom 2	3.93m x 3.19m	12'9" x 10'5"
Bathroom	2.15m x 2.00m	7'11" x 6'6"
Utility	2.15m x 0.85m	7'11" x 2'8"
<b>Total area</b>	<b>72.19 sq. m.</b>	<b>777 sq. ft.</b>

WS - Wardrobe Space (suggestion only, wardrobe not included)

**Furniture arrangements are for illustrative purposes only. Items are not included, nor to scale.**

The items shown in this key may be subject to change, and positions could vary from those indicated on this floorplan. Please refer to Sales Advisor for details of your selected plot. External finishes and landscaping may vary. Please refer to Sales Advisor for further details. All dimensions are approximate and should not be used for carpet sizes, appliance spaces or furniture. We operate a policy of continuous improvement and individual features such as kitchen and bathroom layouts, doors, windows, garages and elevational treatments may vary from time to time. Consequently these particulars should be treated as general guidance only and do not constitute a contract, part of a contract or a warranty.

### Summary points



Apartment



Chester 1 Bathroom  
Midhurst 2 Bathrooms



Chester 1 Bedroom  
Midhurst 2 Bedrooms



Chester 761 Sq.ft.  
Midhurst 777 Sq.ft.

### 5 key points (minimum)

ie

- Open-plan Living/Dining Area
- En Suite to The Midhurst (Plot 126)
- Two double bedrooms to The Midhurst (Plot 126)
- Balcony
- Parking
- Utility Storage Cupboard

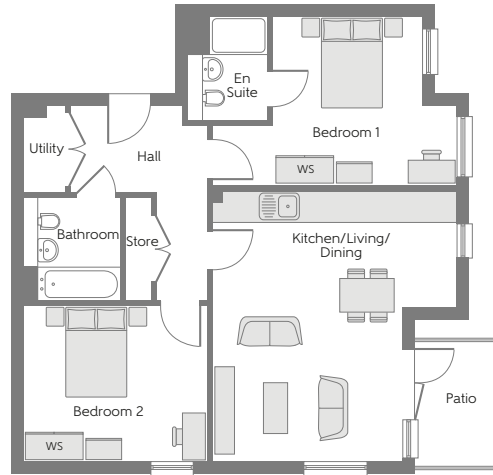
# Apartments

- Standard Artisan
- Bespoke Artisan
- Brand New Apartment Type



## Meridian Court (Block F1)

Plot numbers 127, 128, 134 & 140



### The Stamford (2KB) - Plot 127

Kitchen/Living/Dining	5.56m x 5.08m	18'2" x 16'7"
Bedroom 1	5.08m x 3.50m	16'7" x 11'5"
En Suite to Bedroom 1	2.15m x 1.65m	7'1" x 5'4"
Bedroom 2	3.79m x 3.20m	12'4" x 10'5"
Bathroom	2.15m x 2.00m	7'1" x 6'6"
Utility	1.80m x 0.85m	5'4" x 2'8"
<b>Total area</b>	<b>50.0 sq. m.</b>	<b>538 sq. ft.</b>

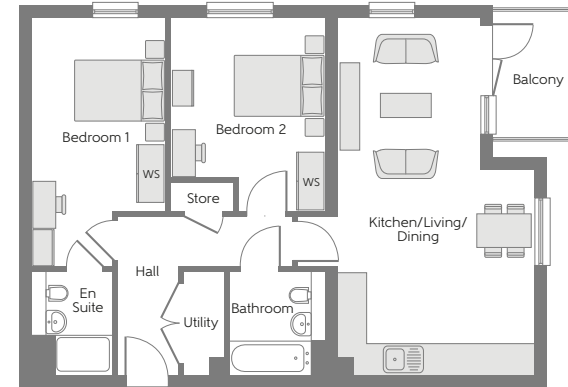
WS - Wardrobe Space (suggestion only, wardrobe not included)

**Furniture arrangements are for illustrative purposes only. Items are not included, nor to scale.**

The items shown in this key may be subject to change, and positions could vary from those indicated on this floorplan. Please refer to Sales Advisor for details of your selected plot. External finishes and landscaping may vary. Please refer to Sales Advisor for further details. All dimensions are approximate and should not be used for carpet sizes, appliance spaces or furniture. We operate a policy of continuous improvement and individual features such as kitchen and bathroom layouts, doors, windows, garages and elevational treatments may vary from time to time. Consequently these particulars should be treated as general guidance only and do not constitute a contract, part of a contract or a warranty.

### The Maldon (2D) - Plots 128, 134 & 140

Kitchen/Living/Dining	7.41m x 4.09m	24'3" x 13'4"
Bedroom 1	5.16m x 2.79m	16'9" x 9'2"
En Suite to Bedroom 1	2.15m x 1.65m	7'1" x 5'4"
Bedroom 2	4.01m x 3.19m	13'2" x 10'5"
Bathroom	2.15m x 2.00m	7'1" x 6'6"
Utility	2.15m x 0.85m	7'1" x 2'8"
<b>Total area</b>	<b>73.05 sq. m.</b>	<b>786 sq. ft.</b>



Third Floor



Second Floor



First Floor



Ground Floor

#### Summary points

Apartment

2 Bathrooms

2 Bedrooms

Stamford 538 Sq.ft.  
Maldon 786 Sq.ft.

#### 5 key points (minimum)

ie

- Open-plan Kitchen/Dining/Living Area
- Two double bedrooms
- En Suite to Bedroom 1
- Balcony
- Parking

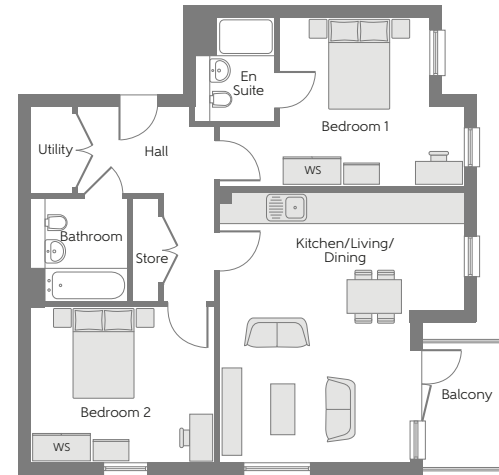
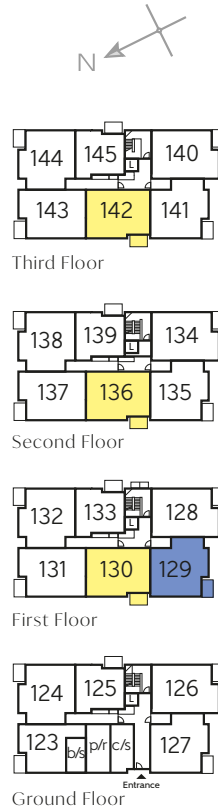
# Apartments

- Standard Artisan
- Bespoke Artisan
- Brand New Apartment Type



## Meridian Court (Block F1)

Plot numbers 129, 130, 136 & 142

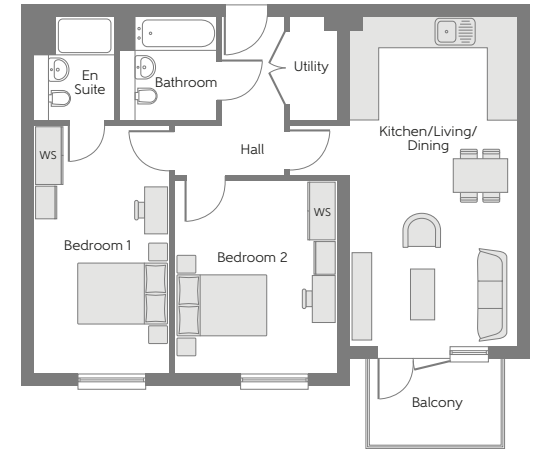


### The Ludlow (2CB) – Plots 130, 136 & 142

Kitchen/Living/Dining	6.85m x 3.46m	22'5" x 11'3"
Bedroom 1	5.16m x 2.80m	16'9" x 9'2"
Ensuite to Bedroom 1	2.15m x 1.65m	7'1" x 5'4"
Bedroom 2	4.01m x 3.37m	13'2" x 11'1"
Bathroom	2.15m x 2.00m	7'1" x 6'6"
Utility	2.15m x 1.03m	7'1" x 3'4"
<b>Total area</b>	<b>70.82 sq. m.</b>	<b>762 sq. ft.</b>

### The Shipston (2KA) – Plot 129

Kitchen/Living/Dining	5.60m x 5.08m	18'4" x 16'7"
Bedroom 1	5.08m x 3.50m	16'7" x 11'5"
En Suite to Bedroom 1	2.15m x 1.65m	7'1" x 5'4"
Bedroom 2	3.79m x 3.22m	12'4" x 10'6"
Bathroom	2.15m x 2.00m	7'1" x 6'6"
Utility	1.80m x 0.85m	5'9" x 2'8"
<b>Total area</b>	<b>70.43 sq. m.</b>	<b>758 sq. ft.</b>



WS - Wardrobe Space (suggestion only, wardrobe not included)

**Furniture arrangements are for illustrative purposes only. Items are not included, nor to scale.**

The items shown in this key may be subject to change, and positions could vary from those indicated on this floorplan. Please refer to Sales Advisor for details of your selected plot. External finishes and landscaping may vary. Please refer to Sales Advisor for further details. All dimensions are approximate and should not be used for carpet sizes, appliance spaces or furniture. We operate a policy of continuous improvement and individual features such as kitchen and bathroom layouts, doors, windows, garages and elevational treatments may vary from time to time. Consequently these particulars should be treated as general guidance only and do not constitute a contract, part of a contract or a warranty.

### Summary points

Apartment

2 Bathrooms

2 Bedrooms

Shipston 758 Sq.ft.  
Ludlow 762 Sq.ft.

### 5 key points (minimum)

ie

- Open-plan Kitchen/Dining/Living Area
- Two double bedrooms
- En Suite to Bedroom 1
- Balcony
- Parking

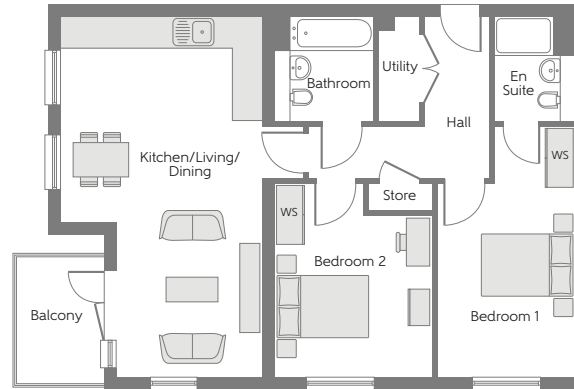
# Apartments

- Standard Artisan
- Bespoke Artisan
- Brand New Apartment Type



## Meridian Court (Block F1)

Plot numbers 131, 132, 137 & 143

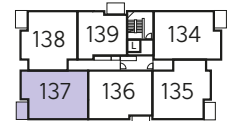


### The Caxton (2DD) - Plots 131, 137 & 143

Kitchen/Living/Dining	7.41m x 4.22m	24'3" x 13'9"
Bedroom 1	5.16m x 2.79m	16'9" x 9'2"
En Suite to Bedroom 1	2.15m x 1.65m	7'1" x 5'4"
Bedroom 2	4.01m x 3.20m	13'2" x 10'5"
Bathroom	2.15m x 2.00m	7'1" x 6'6"
Utility	2.15m x 0.85m	7'1" x 2'8"
<b>Total area</b>	<b>71.22 sq. m.</b>	<b>767 sq. ft.</b>



Third Floor



Second Floor



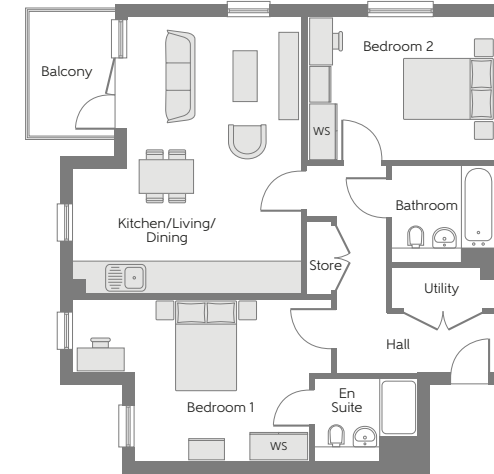
First Floor



Ground Floor

### The Tetbury (2LA) - Plot 132

Kitchen/Living/Dining	5.75m x 3.63m	18'8" x 11'9"
Bedroom 1	5.36m x 3.35m	17'6" x 11'0"
En Suite to Bedroom 1	2.15m x 1.71m	7'1" x 5'6"
Bedroom 2	3.90m x 3.00m	12'8" x 9'8"
Bathroom	2.15m x 2.00m	7'1" x 6'6"
Utility	2.14m x 0.85m	7'1" x 2'8"
<b>Total area</b>	<b>71.14 sq. m.</b>	<b>766 sq. ft.</b>



WS - Wardrobe Space (suggestion only, wardrobe not included)

**Furniture arrangements are for illustrative purposes only. Items are not included, nor to scale.**

The items shown in this key may be subject to change, and positions could vary from those indicated on this floorplan. Please refer to Sales Advisor for details of your selected plot. External finishes and landscaping may vary. Please refer to Sales Advisor for further details. All dimensions are approximate and should not be used for carpet sizes, appliance spaces or furniture. We operate a policy of continuous improvement and individual features such as kitchen and bathroom layouts, doors, windows, garages and elevational treatments may vary from time to time. Consequently these particulars should be treated as general guidance only and do not constitute a contract, part of a contract or a warranty.

### Summary points

Apartment

2 Bathrooms

2 Bedrooms

Caxton 767 Sq.ft.  
Tetbury 766 Sq.ft.

### 5 key points (minimum)

ie

- Open-plan Kitchen/Dining/Living Area
- Two double bedrooms
- En Suite to Bedroom 1
- Balcony
- Parking

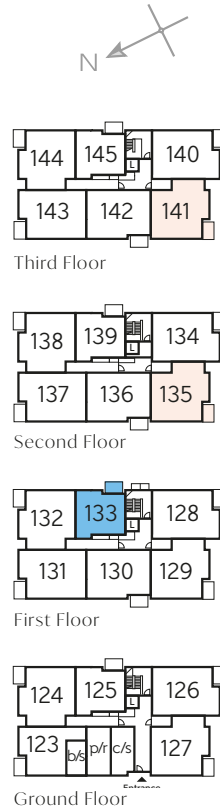
# Apartments

- Standard Artisan
- Bespoke Artisan
- Brand New Apartment Type



## Meridian Court (Block F1)

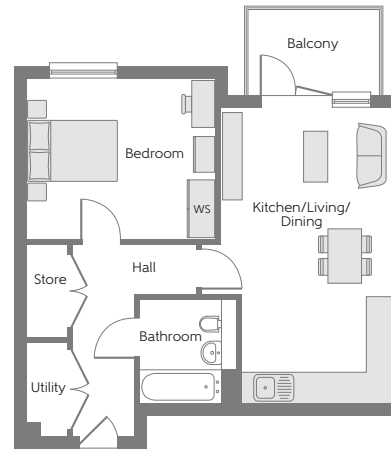
Plot numbers 133, 135 & 141



WS - Wardrobe Space (suggestion only, wardrobe not included)

**Furniture arrangements are for illustrative purposes only. Items are not included, nor to scale.**

The items shown in this key may be subject to change, and positions could vary from those indicated on this floorplan. Please refer to Sales Advisor for details of your selected plot. External finishes and landscaping may vary. Please refer to Sales Advisor for further details. All dimensions are approximate and should not be used for carpet sizes, appliance spaces or furniture. We operate a policy of continuous improvement and individual features such as kitchen and bathroom layouts, doors, windows, garages and elevational treatments may vary from time to time. Consequently these particulars should be treated as general guidance only and do not constitute a contract, part of a contract or a warranty.

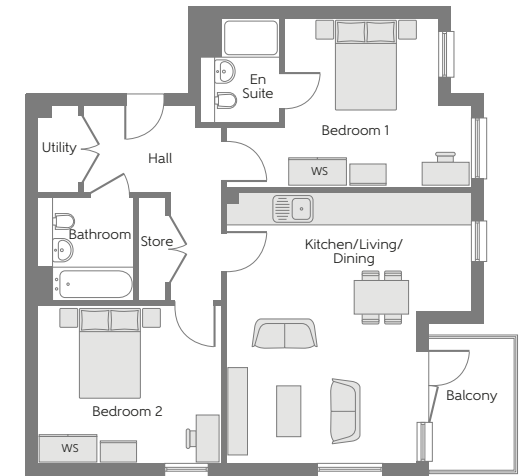


### The Chepstow (1EA) - Plot 133

Kitchen/Living/Dining	6.14m x 3.62m	20'1" x 11'9"
Bedroom	3.93m x 3.34m	12'9" x 10'9"
Bathroom	2.15m x 2.00m	7'1" x 6'6"
Utility	1.94m x 0.85m	6'4" x 2'8"
<b>Total area</b>	<b>50.11 sq. m.</b>	<b>539 sq. ft.</b>

### The Selby (2K) - Plots 135 & 141

Kitchen/Living/Dining	5.60m x 5.08m	18'4" x 16'7"
Bedroom 1	5.08m x 3.50m	16'7" x 11'5"
En Suite to Bedroom 1	2.15m x 1.65m	7'1" x 5'4"
Bedroom 2	3.79m x 3.26m	12'4" x 10'7"
Bathroom	2.15m x 2.00m	7'1" x 6'6"
Utility	1.80m x 0.85m	5'4" x 2'8"
<b>Total area</b>	<b>71.10 sq. m.</b>	<b>765 sq. ft.</b>



### Summary points

- Apartment
- Chepstow 1 Bathroom  
Selby 2 Bathrooms
- Chepstow 1 Bedroom  
Selby 2 Bedrooms
- Chepstow 539 Sq.ft.  
Selby 765 Sq.ft.

### 5 key points (minimum)

- ie
- Open-plan Living/Dining Area
- En Suite to The Selby (Plots 135 & 141)
- Two double bedrooms to The Selby (Plots 135 & 141)
- Balcony
- Parking
- Utility Storage Cupboard

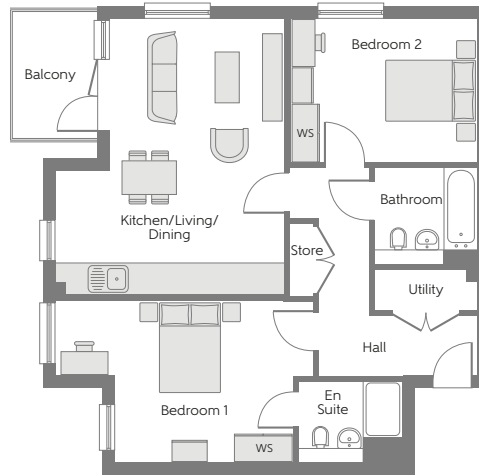
# Apartments

- Standard Artisan
- Bespoke Artisan
- Brand New Apartment Type



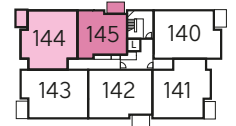
## Meridian Court (Block F1)

Plot numbers 138, 139, 144 & 145

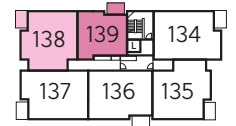


### The Sudbury (2L) – Plots 138 & 144

Kitchen/Living/Dining	5.73m x 4.75m	18'8" x 15'6"
Bedroom 1	5.36m x 3.37m	17'6" x 11'1"
En Suite to Bedroom 1	2.15m x 1.70m	7'1" x 5'6"
Bedroom 2	3.89m x 3.00m	12'8" x 9'8"
Bathroom	2.15m x 2.00m	7'1" x 6'6"
Utility	2.15m x 0.85m	7'1" x 2'8"
<b>Total area</b>	<b>71.27sq. m.</b>	<b>767 sq. ft.</b>



Third Floor



Second Floor



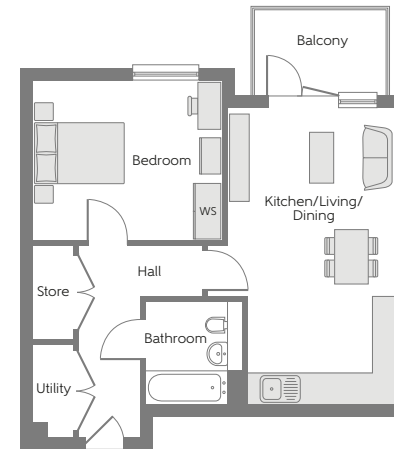
First Floor



Ground Floor

### The Charley (1E) – Plots 139 & 145

Kitchen/Living/Dining	6.18m x 3.62m	6'2" x 11'9"
Bedroom	3.93m x 3.34m	12'9" x 10'9"
Bathroom	2.15m x 2.00m	7'1" x 6'6"
Utility	1.94m x 0.85m	6'4" x 2'8"
<b>Total area</b>	<b>50.20 sq. m.</b>	<b>540 sq. ft.</b>



WS - Wardrobe Space (suggestion only, wardrobe not included)

**Furniture arrangements are for illustrative purposes only. Items are not included, nor to scale.**

The items shown in this key may be subject to change, and positions could vary from those indicated on this floorplan. Please refer to Sales Advisor for details of your selected plot. External finishes and landscaping may vary. Please refer to Sales Advisor for further details. All dimensions are approximate and should not be used for carpet sizes, appliance spaces or furniture. We operate a policy of continuous improvement and individual features such as kitchen and bathroom layouts, doors, windows, garages and elevational treatments may vary from time to time. Consequently these particulars should be treated as general guidance only and do not constitute a contract, part of a contract or a warranty.

### Summary points



Apartment



Sudbury 2 Bathrooms  
Charley 1 Bathroom



Sudbury 2 Bedrooms  
Charley 1 Bedroom



Sudbury 767 Sq.ft.  
Charley 540 Sq.ft.

### 5 key points (minimum)

ie

- Open-plan Living/Dining Area
- En Suite to The Sudbury (Plots 138 & 144)
- Two double bedrooms to The Sudbury (Plots 138 & 144)
- Balcony
- Parking
- Utility Storage Cupboard