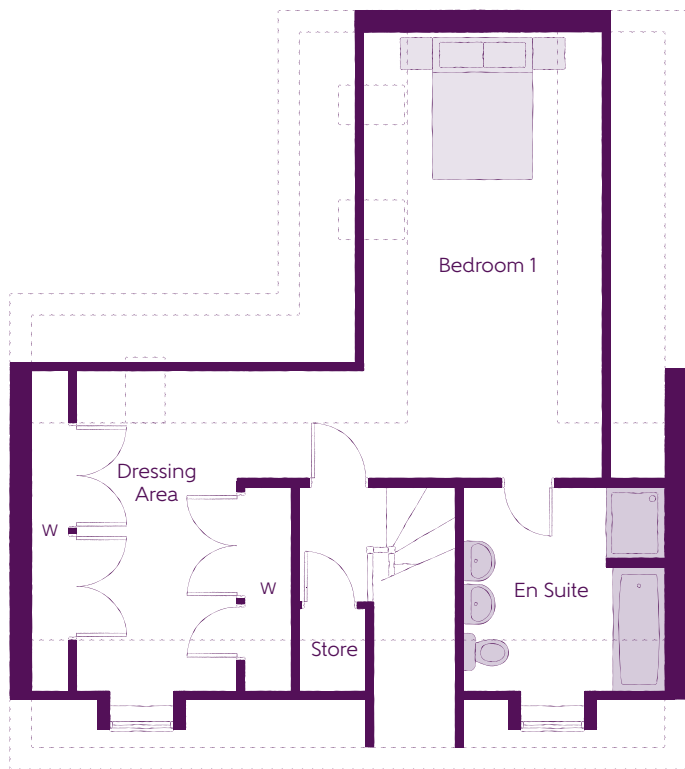


THE BELLFLOWER

FIVE BEDROOM HOME



Ashberry
Homes

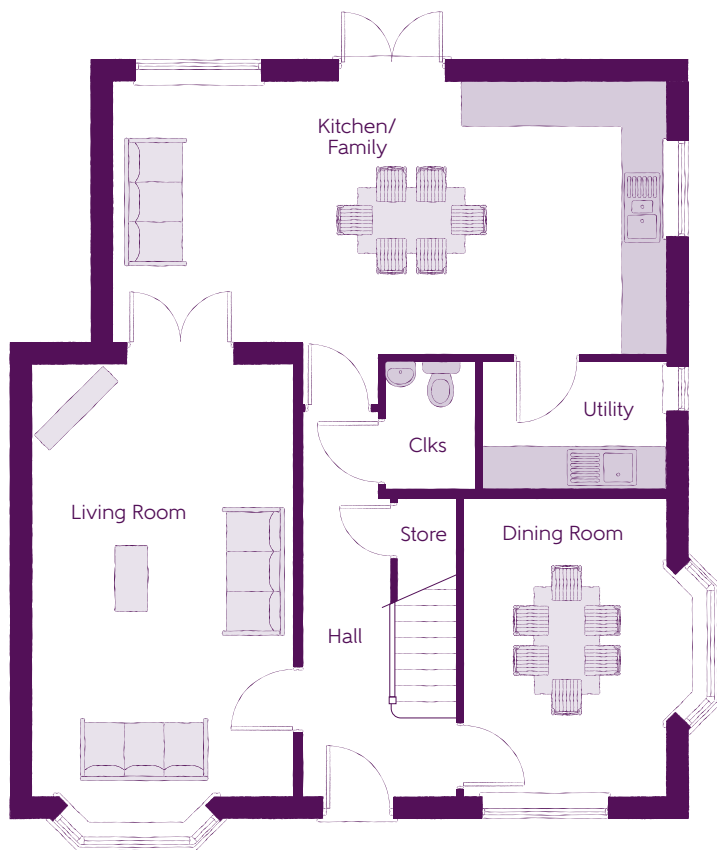
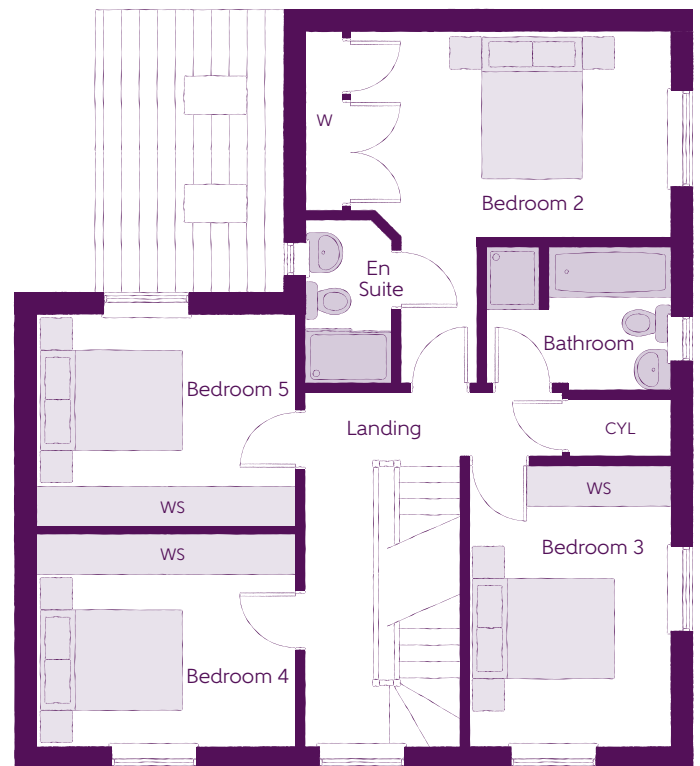


Second Floor

Bedroom 1	6.190m x 3.330m	20'3" x 10'11"
Bedroom 1 En Suite	2.800m x 2.800m	9'2" x 9'2"
Dressing	4.460m x 2.240m	14'7" x 7'4"

First Floor

Bedroom 2	4.440m x 4.870m	14'7" x 16'0"
Bedroom 2 En Suite	2.322m x 1.200m	7'7" x 3'11"
Bedroom 3	3.880m x 2.800m	12'8" x 9'2"
Bedroom 4	3.610m x 2.930m	11'0" x 9'7"
Bedroom 5	3.610m x 2.930m	11'0" x 9'7"
Bathroom	2.560m x 2.012m	8'5" x 6'7"



Ground Floor

Kitchen/Family	7.650m x 4.470m	25'1" x 14'7"
Living Room	5.970m x 3.590m	19'7" x 11'9"
Dining Room	4.130m x 2.820m	13'6" x 9'3"
Utility	2.544m x 1.775m	8'5" x 5'10"
Cloakroom	1.804m x 1.250m	5'11" x 4'1"

Clks - Cloakroom WS - Wardrobe Space (suggestion only, wardrobe not included) W - Fitted Wardrobe CYL - Hot Water Cylinder ---- - Reduced Head Height

The items shown in this key may be subject to change, and positions could vary from those indicated on this floorplan. Please refer to Sales Advisor for details of your selected plot. Computer generated image shown overleaf. External finishes, landscaping and configuration may vary from plot to plot. Please refer to Sales Advisor for further details. All dimensions are approximate and should not be used for carpet sizes, appliance spaces or furniture. We operate a policy of continuous improvement and individual features such as kitchen and bathroom layouts, doors, windows, garages and elevational treatments may vary from time to time. Consequently these particulars should be treated as general guidance only and do not constitute a contract, part of a contract or a warranty.