

# Motivo

ONE AND TWO BEDROOM APARTMENTS



THE  
**ARTISAN**  
COLLECTION



**Modello**  
A development of new homes in Gateshead

**Bellway**

# Development layout





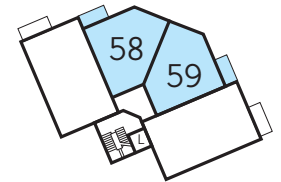
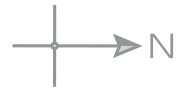
The Scriber – Plots 47, 51, 55 & 59

Kitchen/Living/Dining	5.92m x 4.55m	19'5" x 14'11"
Bedroom	5.57m x 2.75m	18'3" x 9'0"
Bathroom	2.20m x 2.05m	7'3" x 6'9"
<b>Total area</b>	<b>51.12 sq. m.</b>	<b>550 sq. ft.</b>

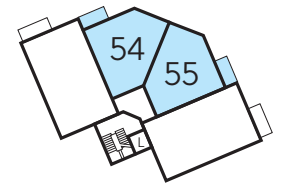


The Scriber – Plots 50, 54 & 58

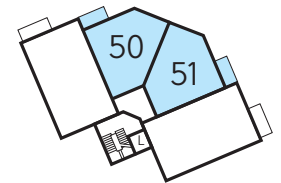
Kitchen/Living/Dining	5.92m x 4.55m	19'5" x 14'11"
Bedroom	5.57m x 2.75m	18'3" x 9'0"
Bathroom	2.20m x 2.05m	7'3" x 6'9"
<b>Total area</b>	<b>51.12 sq. m.</b>	<b>550 sq. ft.</b>



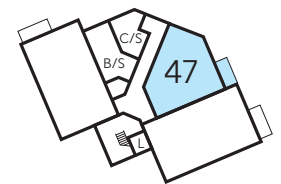
Third Floor



Second Floor



First Floor

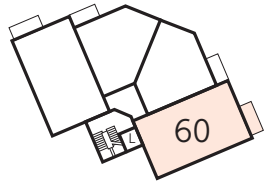
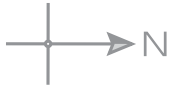


Ground Floor

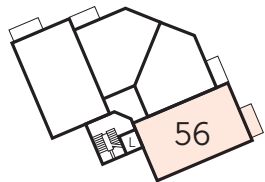
a/c - airing cupboard WS - Wardrobe Space (suggestion only, wardrobe not included)

**Furniture arrangements are for illustrative purposes only. Items are not included, nor to scale.**

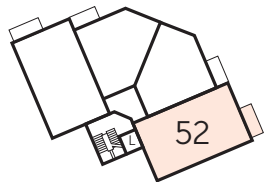
The items shown in this key may be subject to change, and positions could vary from those indicated on this floorplan. Please refer to Sales Advisor for details of your selected plot. External finishes and landscaping may vary. Please refer to Sales Advisor for further details. All dimensions are approximate and should not be used for carpet sizes, appliance spaces or furniture. We operate a policy of continuous improvement and individual features such as kitchen and bathroom layouts, doors, windows, garages and elevational treatments may vary from time to time. Consequently these particulars should be treated as general guidance only and do not constitute a contract, part of a contract or a warranty.



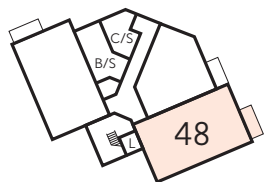
Third Floor



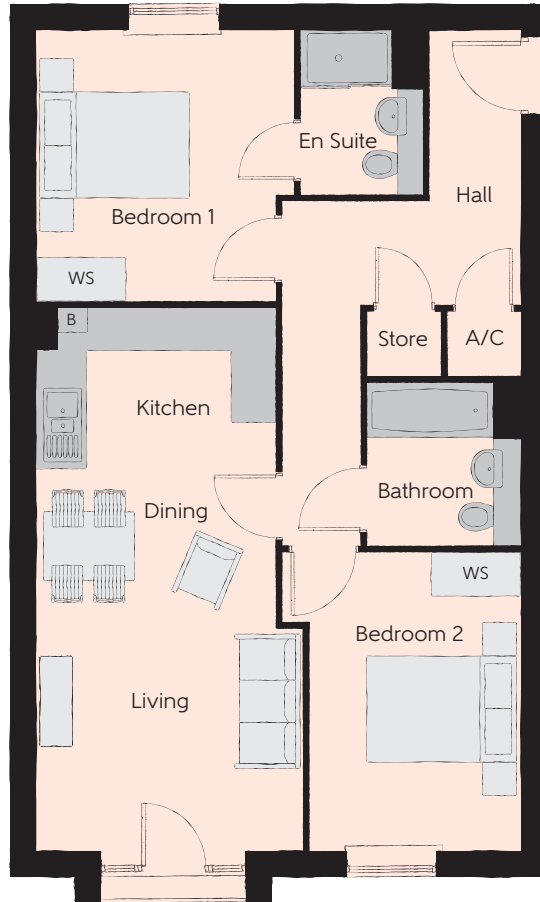
Second Floor



First Floor



Ground Floor



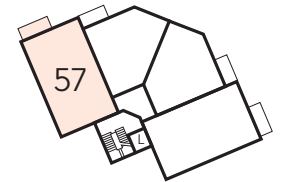
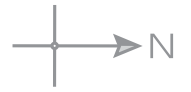
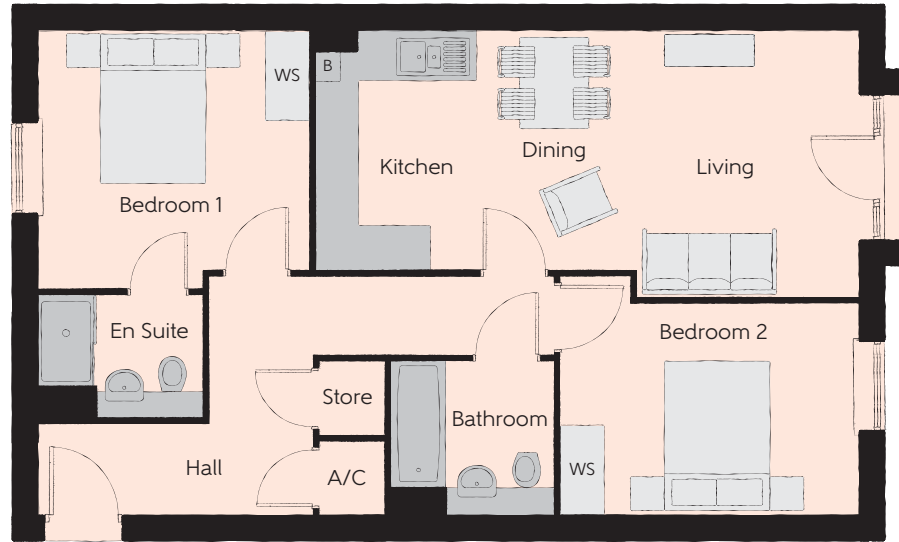
## The Loupe - Plots 48, 52, 56 & 60

Kitchen/Living/Dining	7.27m x 3.56m	23'10" x 11'8"
Bedroom 1	3.61m x 3.44m	11'10" x 11'4"
Bedroom 1 En Suite	2.20m x 1.65m	7'3" x 5'5"
Bedroom 2	3.99m x 2.82m	13'1" x 9'3"
Bathroom	2.20m x 2.05m	7'3" x 6'9"
<b>Total area</b>	<b>70.71 sq. m.</b>	<b>761 sq. ft.</b>

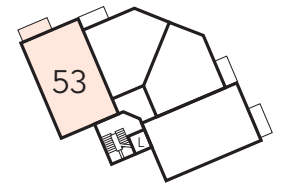
a/c - airing cupboard WS - Wardrobe Space (suggestion only, wardrobe not included)

**Furniture arrangements are for illustrative purposes only. Items are not included, nor to scale.**

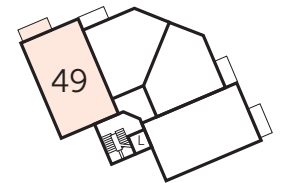
The items shown in this key may be subject to change, and positions could vary from those indicated on this floorplan. Please refer to Sales Advisor for details of your selected plot. External finishes and landscaping may vary. Please refer to Sales Advisor for further details. All dimensions are approximate and should not be used for carpet sizes, appliance spaces or furniture. We operate a policy of continuous improvement and individual features such as kitchen and bathroom layouts, doors, windows, garages and elevational treatments may vary from time to time. Consequently these particulars should be treated as general guidance only and do not constitute a contract, part of a contract or a warranty.



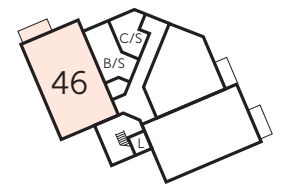
Third Floor



Second Floor



First Floor



Ground Floor

The Loupe – Plots 46, 49, 53 & 57

Kitchen/Living/Dining	7.27m x 3.56m	23'10" x 11'8"
Bedroom 1	3.61m x 3.44m	11'10" x 11'4"
Bedroom 1 En Suite	2.20m x 1.65m	7'3" x 5'5"
Bedroom 2	3.99m x 2.82m	13'1" x 9'3"
Bathroom	2.20m x 2.05m	7'3" x 6'9"
<b>Total area</b>	<b>70.71 sq. m.</b>	<b>761 sq. ft.</b>

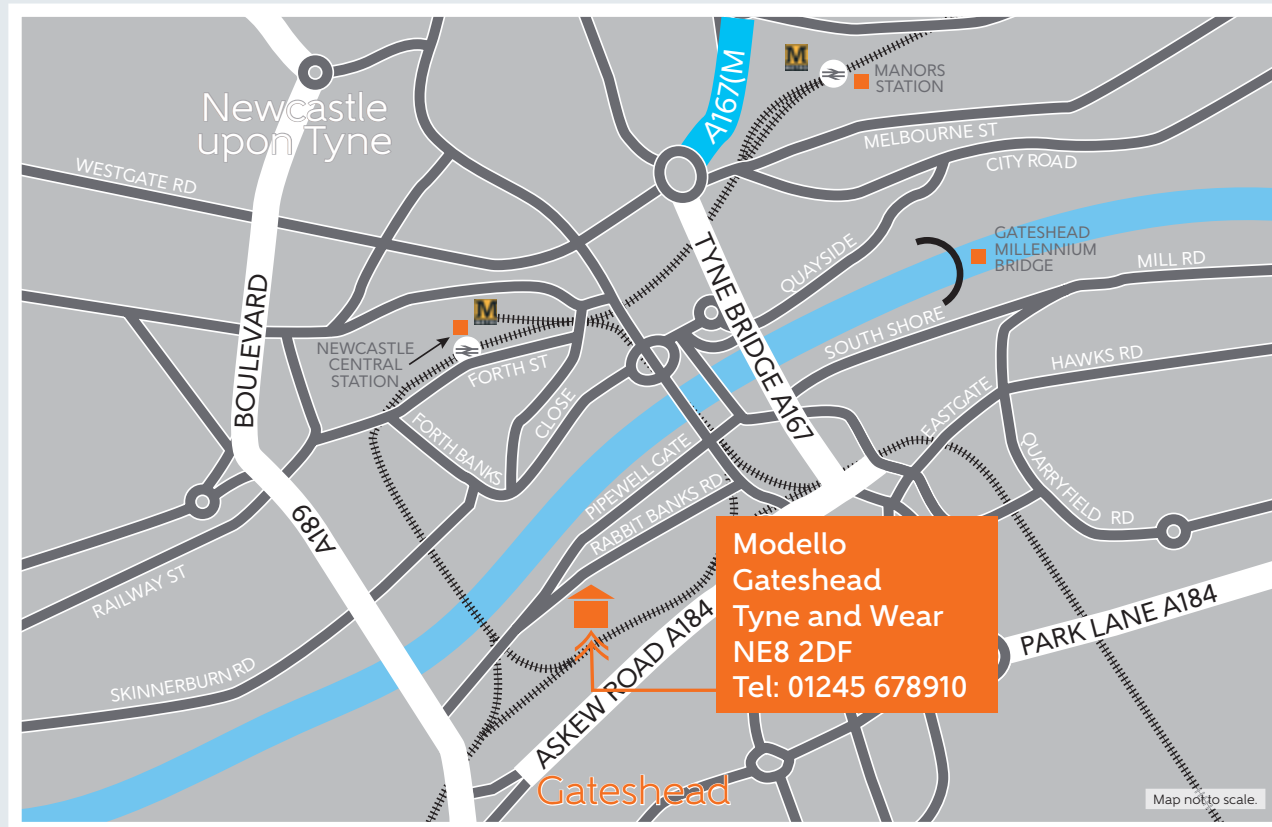
a/c - airing cupboard WS - Wardrobe Space (suggestion only, wardrobe not included)

**Furniture arrangements are for illustrative purposes only. Items are not included, nor to scale.**

The items shown in this key may be subject to change, and positions could vary from those indicated on this floorplan. Please refer to Sales Advisor for details of your selected plot. External finishes and landscaping may vary. Please refer to Sales Advisor for further details. All dimensions are approximate and should not be used for carpet sizes, appliance spaces or furniture. We operate a policy of continuous improvement and individual features such as kitchen and bathroom layouts, doors, windows, garages and elevational treatments may vary from time to time. Consequently these particulars should be treated as general guidance only and do not constitute a contract, part of a contract or a warranty.

# How to find us

---



Bellway Homes Limited (North East Division)  
Bellway House Kings Park, Kingsway N, Gateshead NE11 0JH  
Telephone: 0191 482 8800 bellway.co.uk