

The Avebury Apartments

1 and 2 bedroom apartments

Apartments 84 - 111 and 224 - 227



Bellway Homes Limited (Thames Gateway Division)
Bellway House, Anchor Boulevard,
Crossways Business Park, Dartford, Kent DA2 6QH

Telephone: 01689 886400
www.bellway.co.uk

Bellway



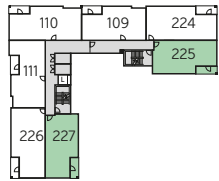
Computer generated image of The Avebury Apartments.



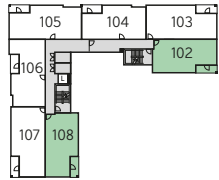
Apartments

The Avebury Apartments
plots 84 -111 & 224-227

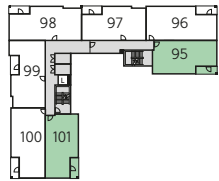
The site plan is drawn to show the relative position of individual properties. NOT TO SCALE. This is a two dimensional drawing and will not show land contours and gradients, boundary treatments, landscaping or local authority street lighting. Footpaths subject to change. For details of individual properties and availability please refer to our Sales Advisor. Key to plan: s/s Sub Station.



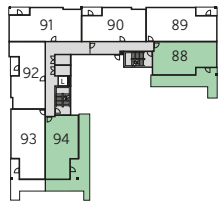
Fourth Floor



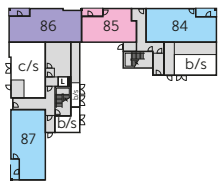
Third Floor



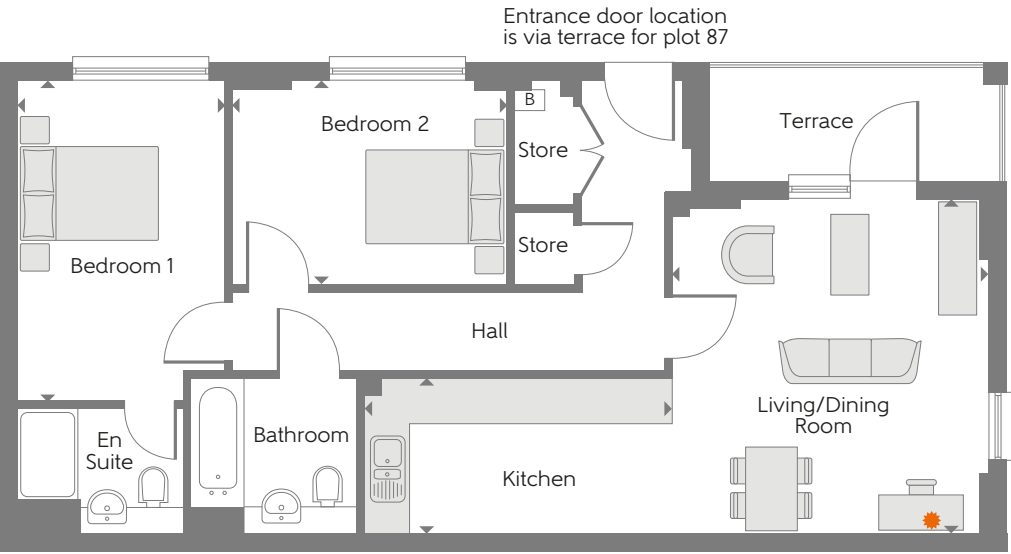
Second Floor



First Floor

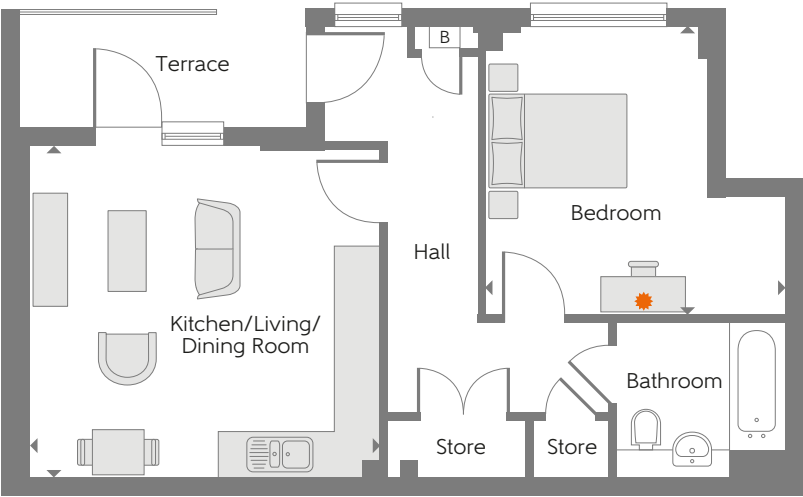


Ground Floor



Avebury 10
Apartments 84 & 87*

Kitchen	4.071m x 2.050m	13'4" x 6'9"
Living/Dining Room	4.423m x 4.055m	14'6" x 13'4"
Bedroom 1	4.250m x 2.750m	13'11" x 9'0"
Bedroom 2	3.628m x 2.703m	11'11" x 8'10"
Total Area	70.3 sq.m.	757 sq.ft.



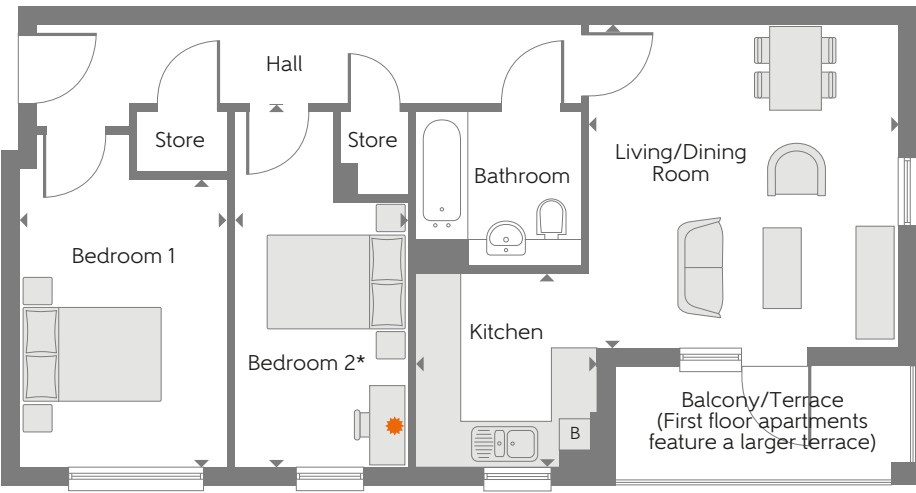
Avebury 12
Apartment 85

Kitchen/Living Dining Room	4.733m x 4.422m	15'6" x 14'6"
Bedroom	3.938m x 3.810m	12'11" x 12'6"
Total Area	51.2 sq.m.	551 sq.ft.



Avebury 16
Apartment 86

Kitchen	2.885m x 2.663m	9'6" x 8'9"
Living/Dining Room	4.565m x 3.150m	15'0" x 10'4"
Bedroom 1	3.323m x 2.847m	10'11" x 9'4"
Bedroom 2	3.688m x 3.181m	12'1" x 10'5"
Total Area	70.7 sq.m.	761 sq.ft.



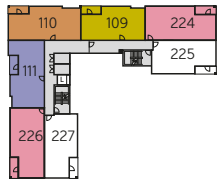
Avebury 13
Apartments 88, 94*, 95, 101*, 102, 108*, 225 & 227*

Kitchen	2.593m x 2.402m	8'6" x 7'11"
Living/Dining Room	4.312m x 4.042m	14'2" x 13'3"
Bedroom 1	3.863m x 2.787m	12'8" x 9'2"
Bedroom 2	4.741m x 2.290m	15'7" x 7'6"
Total Area	61.7 sq.m.	664 sq.ft.

► Indicates where dimensions are taken from * Handed plot

B Boiler * Suggested working from home area with USB socket

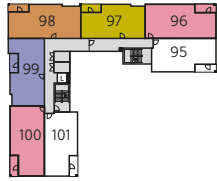
*Please refer to Sales Advisor for electrical layout. Some items shown in this key may be subject to change, and positions could vary from those indicated on this floorplan. Please refer to Sales Advisor for details of your selected plot. Computer generated image shown overleaf. External finishes and landscaping may vary from plot to plot. Please refer to Sales Advisor for further details. All dimensions are approximate and should not be used for carpet sizes, appliance spaces, or furniture. Furniture not to scale and all positions are indicative. We operate a policy of continuous improvement and individual features such as kitchen and bathroom layouts, doors, windows, garages and elevational treatments may vary from time to time. Consequently these particulars should be treated as general guidance only and do not constitute a contract, part of a contract or a warranty. c/s Cycle store b/s Bin store, L. Lift.



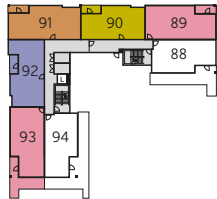
Fourth Floor



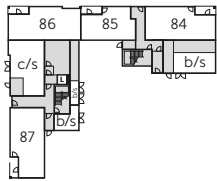
Third Floor



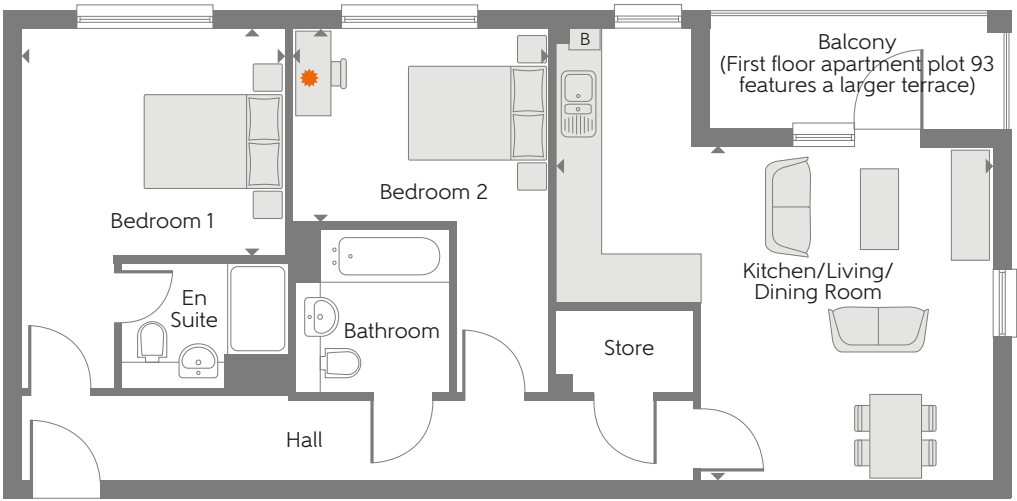
Second Floor



First Floor



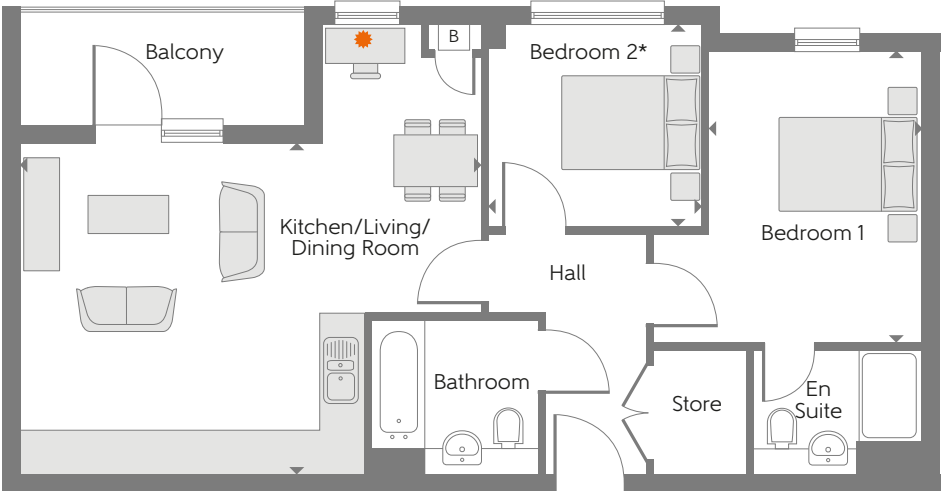
Ground Floor



Avebury 14

Apartments 89, 93*, 96, 100*, 103, 107*, 224 & 226*

Kitchen/Living Dining Room	5.760m x 4.422m	18'11" x 14'6"
Bedroom 1	3.521m x 3.103m	11'7" x 10'2"
Bedroom 2	3.372m x 2.553m	11'1" x 8'5"
Total Area	70.9 sq.m.	763 sq.ft.



Avebury 17

Apartments 90, 97, 104 & 109

Kitchen/Living Dining Room	5.986m x 4.383m	19'8" x 14'5"
Bedroom 1	3.873m x 2.783m	12'8" x 9'2"
Bedroom 2	2.815m x 2.663m	9'3" x 8'9"
Total Area	62.9 sq.m.	677 sq.ft.



Avebury 11

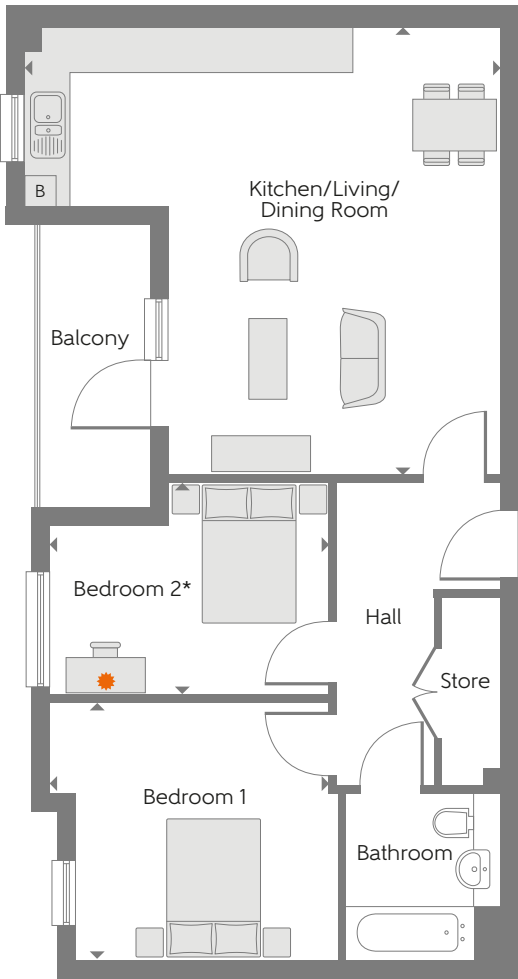
Apartments 91, 98, 105 & 110

Kitchen	2.695m x 2.663m	8'10" x 8'9"
Living/Dining Room	4.382m x 4.375m	14'5" x 14'4"
Bedroom 1	3.643m x 3.430m	11'11" x 11'3"
Bedroom 2	3.863m x 2.888m	12'8" x 9'6"
Total Area	71.1 sq.m.	765 sq.ft.

Avebury 18

Apartments 92, 99, 106 & 111

Kitchen/Living Dining Room	6.335m x 5.920m	20'9" x 19'5"
Bedroom 1	3.697m x 3.405m	12'2" x 11'2"
Bedroom 2	3.697m x 2.808m	12'2" x 9'3"
Total Area	67.0 sq.m.	721 sq.ft.



► Indicates where dimensions are taken from * Handed plot

B Boiler * Suggested working from home area with USB socket

*Please refer to Sales Advisor for electrical layout. Some items shown in this key may be subject to change, and positions could vary from those indicated on this floorplan. Please refer to Sales Advisor for details of your selected plot. Computer generated image shown overleaf. External finishes and landscaping may vary from plot to plot. Please refer to Sales Advisor for further details. All dimensions are approximate and should not be used for carpet sizes, appliance spaces, or furniture. Furniture not to scale and all positions are indicative. We operate a policy of continuous improvement and individual features such as kitchen and bathroom layouts, doors, windows, garages and elevational treatments may vary from time to time. Consequently these particulars should be treated as general guidance only and do not constitute a contract, part of a contract or a warranty. c/s Cycle store b/s Bin store, L. Lift. 219636/07/21.



Apartment Specification

Kitchen

Handle-less wall units
Built in oven, gas hob and cooker hood (oven typically within tall unit where space allows)
Stainless steel splashback
Integrated fridge/freezer
Space for microwave, dishwasher and washer dryer
Feature LED under unit lighting

Bathroom

White Roca sanitaryware with chrome Bristan fittings
Mira shower tray and thermostatic shower
Full height wall tiling around shower, half height tiling to remaining walls

Flooring

Laminate flooring to hallway, kitchen, dining and living areas
Tiling to bathrooms and en suite
Cormar carpets to bedrooms

Telephone and multimedia

TV outlets to living room and bedroom 1 with digital/freeview and Sky Q/Sky+ HD installed (connection to be arranged by purchaser via communal satellite dish)
USB sockets to kitchen, living room and bedroom 1
BT or Hyperoptic connectivity

Internal finishes

Walls and ceilings finished in white matt emulsion
White internal doors with chrome fittings
Downlights to hallway, kitchen, bathroom and en suites
Energy efficient pendant lighting to living areas and bedrooms (with dimmer switch to main living areas)
Mains powered smoke and carbon monoxide detector
Video entry system
Heating and hot water provided via Ideal LOGIC combination boiler

Miscellaneous

10 year NHBC warranty