

# Aviation House

One and two bedroom homes

---

Apartments 35-42 & 63-197



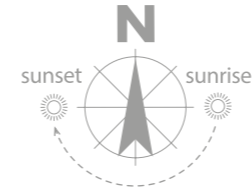
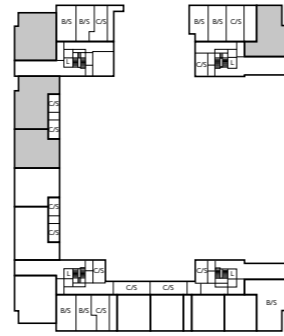
Bellway Homes Limited (Thames Valley Division)  
Pacific House Imperial Way, Reading  
Berkshire RG2 0TD

Telephone: 01252 982 229  
[www.bellway.co.uk](http://www.bellway.co.uk)

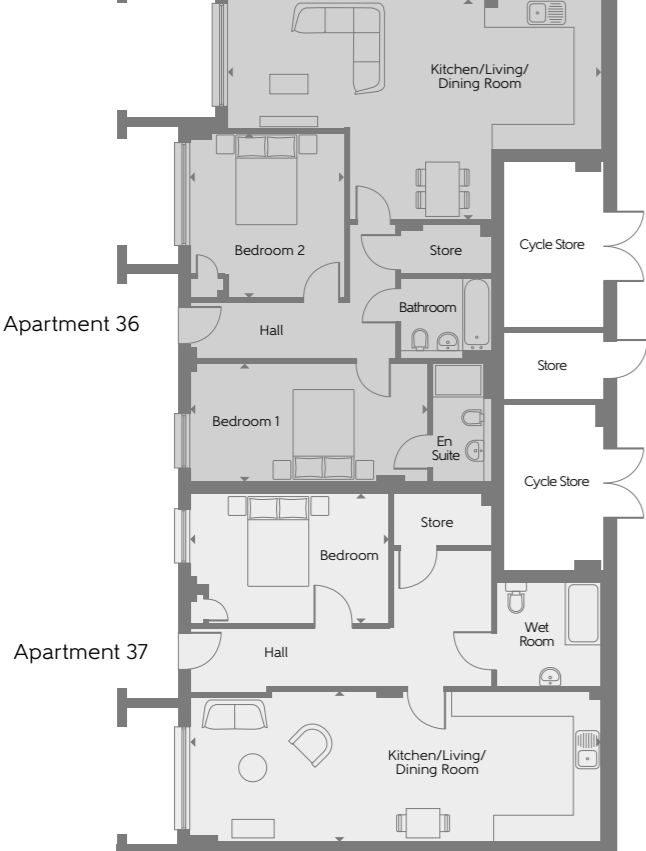
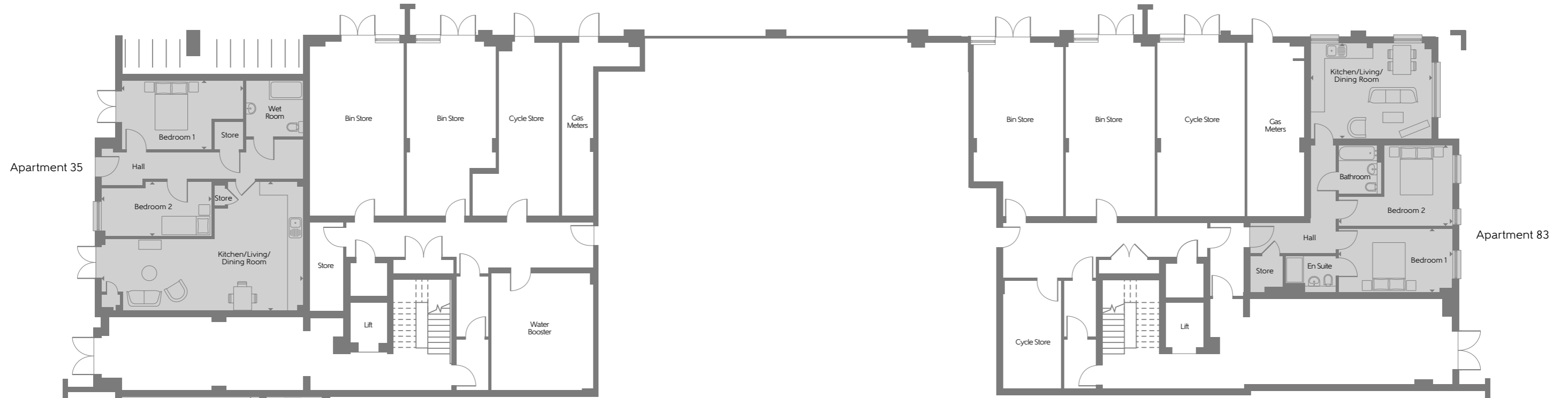
**Bellway**

# Aviation House

## Ground Floor - North East & North West



- 1 Bedroom
- 2 Bedroom



**Apartment 35 - The Beaufort**

Kitchen/Living/Dining Room	8.80m x 5.67m	28'10" x 18'7"
Bedroom 1	5.30m x 3.00m	17'4" x 9'10"
Bedroom 2	4.80m x 2.40m	15'8" x 7'10"
<b>Total internal area</b>	<b>87 sq.m</b>	<b>937 sq.ft.</b>

**Apartment 36 - The Fulmer**

Kitchen/Living/Dining Room	8.72m x 5.19m	28'7" x 17'0"
Bedroom 1	5.57m x 2.77m	18'3" x 9'1"
Bedroom 2	3.90m x 3.62m	12'9" x 11'10"
<b>Total internal area</b>	<b>88 sq.m</b>	<b>943 sq.ft.</b>

**Apartment 37 - The Spitfire**

Kitchen/Living/Dining Room	9.62m x 3.52m	31'6" x 11'6"
Bedroom	4.63m x 3.02m	15'2" x 9'10"
<b>Total internal area</b>	<b>74 sq.m</b>	<b>793 sq.ft.</b>

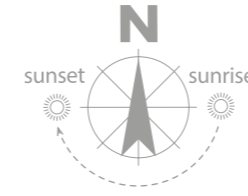
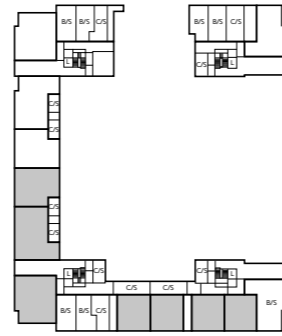
**Apartment 83 - The Blenheim**

Kitchen/Living/Dining Room	5.22m x 4.22m	17'1" x 13'10"
Bedroom 1	4.92m x 2.75m	16'1" x 9'0"
Bedroom 2	4.92m x 3.55m	16'1" x 11'7"
<b>Total internal area</b>	<b>71 sq.m</b>	<b>769 sq.ft.</b>

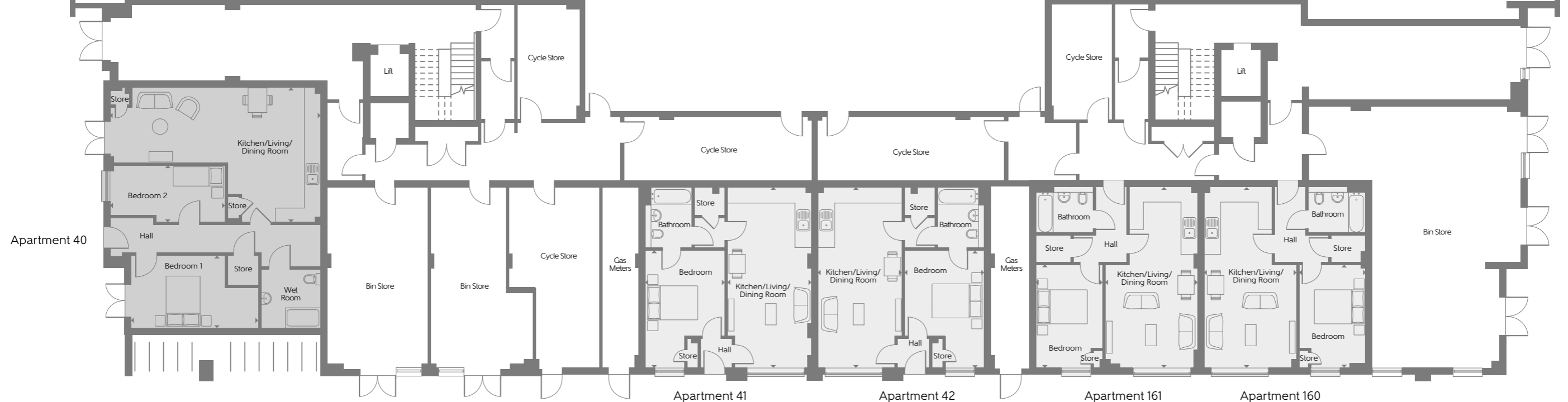
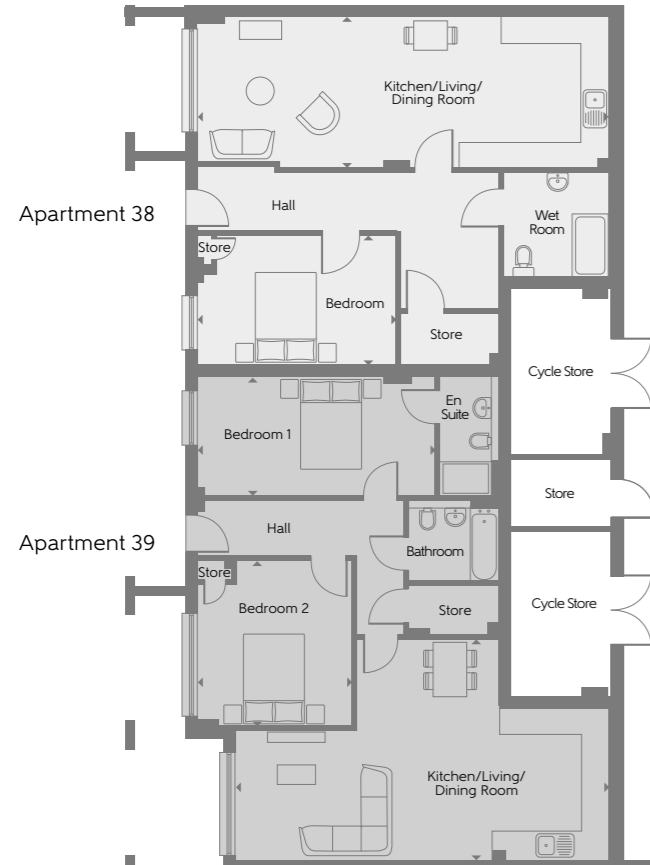
Some items shown in this key may be subject to change, and positions could vary from those indicated on this floorplate. Please refer to Sales Advisor for details of your selected plot. External finishes and landscaping may vary from plot to plot. Please refer to Sales Advisor for further details. All dimensions are approximate and should not be used for carpet sizes, appliance spaces, or furniture. Furniture not to scale and all positions are indicative. We operate a policy of continuous improvement and individual features such as kitchen and bathroom layouts, doors, windows, garages and elevational treatments may vary from time to time. Consequently these particulars should be treated as general guidance only and do not constitute a contract, part of a contract or a warranty. 03110-02/08/22.

# Aviation House

## Ground Floor - South East & South West



- 1 Bedroom
- 2 Bedroom



### Apartment 38 - The Spitfire

Kitchen/Living/Dining Room	9.62m x 3.52m	31'6" x 11'6"
Bedroom	4.63m x 3.02m	15'2" x 9'10"
<b>Total internal area</b>	<b>74 sq.m</b>	<b>793 sq.ft.</b>

### Apartment 39 - The Fulmer

Kitchen/Living/Dining Room	8.72m x 5.19m	28'7" x 17'0"
Bedroom 1	5.57m x 2.77m	18'3" x 9'1"
Bedroom 2	3.90m x 3.62m	12'9" x 11'10"
<b>Total internal area</b>	<b>88 sq.m</b>	<b>943 sq.ft.</b>

### Apartment 40 - The Beaufort

Kitchen/Living/Dining Room	8.80m x 5.67m	28'10" x 18'7"
Bedroom 1	5.30m x 3.00m	17'4" x 9'10"
Bedroom 2	4.80m x 2.40m	15'8" x 7'10"
<b>Total internal area</b>	<b>87 sq.m</b>	<b>937 sq.ft.</b>

### Apartments 41 & 42 - The Shackleton

Kitchen/Living/Dining Room	7.53m x 3.50m	24'8" x 11'5"
Bedroom	4.90m x 3.30m	16'0" x 10'9"
<b>Total internal area</b>	<b>53 sq.m</b>	<b>567 sq.ft.</b>

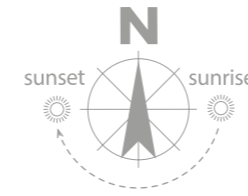
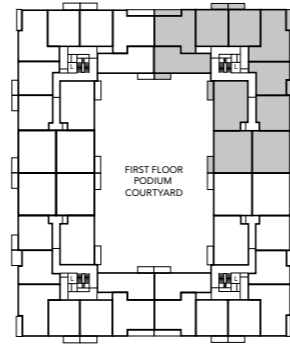
### Apartments 160 & 161 - The Wallace

Kitchen/Living/Dining Room	7.53m x 3.82m	24'8" x 12'6"
Bedroom	4.33m x 2.80m	14'2" x 9'2"
<b>Total internal area</b>	<b>51 sq.m</b>	<b>553 sq.ft.</b>

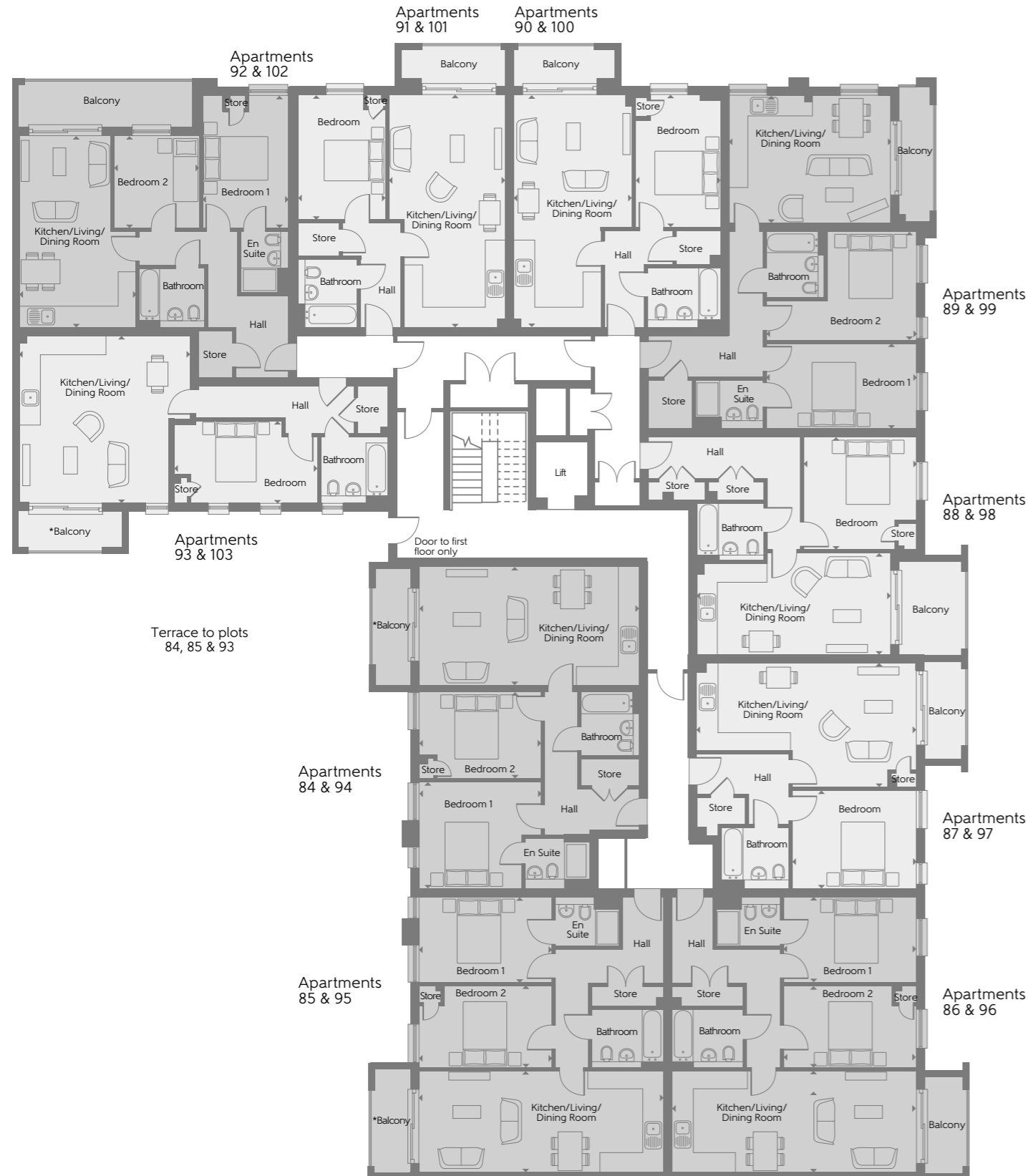
Some items shown in this key may be subject to change, and positions could vary from those indicated on this floorplate. Please refer to Sales Advisor for details of your selected plot. External finishes and landscaping may vary from plot to plot. Please refer to Sales Advisor for further details. All dimensions are approximate and should not be used for carpet sizes, appliance spaces, or furniture. Furniture not to scale and all positions are indicative. We operate a policy of continuous improvement and individual features such as kitchen and bathroom layouts, doors, windows, garages and elevational treatments may vary from time to time. Consequently these particulars should be treated as general guidance only and do not constitute a contract, part of a contract or a warranty. 03110-02/08/22.

# Aviation House

## First & Second Floor - North East



- 1 Bedroom
- 2 Bedroom



**Apartments 84 & 94 - The Hunter**

Kitchen/Living/Dining Room	7.12m x 3.85m	23'4" x 12'7"
Bedroom 1	3.92m x 3.43m	12'10" x 11'3"
Bedroom 2	3.92m x 2.84m	12'10" x 9'3"
<b>Total internal area</b>	<b>71 sq.m</b>	<b>769 sq.ft.</b>

**Apartments 85, 86, 95 & 96 - The Harrier**

Kitchen/Living/Dining Room	7.97m x 3.30m	26'1" x 10'9"
Bedroom 1	4.35m x 2.79m	14'3" x 9'1"
Bedroom 2	4.35m x 2.69m	14'3" x 8'9"
<b>Total internal area</b>	<b>72 sq.m</b>	<b>780 sq.ft.</b>

**Apartments 87 & 97 - The Halifax**

Kitchen/Living/Dining Room	7.15m x 4.05m	23'5" x 13'3"
Bedroom	4.07m x 3.15m	13'4" x 10'4"
<b>Total internal area</b>	<b>52 sq.m</b>	<b>555 sq.ft.</b>

**Apartments 88 & 98 - The Canberra**

Kitchen/Living/Dining Room	6.25m x 3.30m	20'6" x 10'9"
Bedroom	3.70m x 3.67m	12'1" x 12'0"
<b>Total internal area</b>	<b>52 sq.m</b>	<b>557 sq.ft.</b>

**Apartments 89 & 99 - The Blenheim**

Kitchen/Living/Dining Room	5.22m x 4.22m	17'1" x 13'10"
Bedroom 1	4.92m x 2.75m	16'1" x 9'0"
Bedroom 2	4.92m x 3.55m	16'1" x 11'7"
<b>Total internal area</b>	<b>71 sq.m</b>	<b>769 sq.ft.</b>

**Apartments 90 & 100 - The Wallace**

Kitchen/Living/Dining Room	7.53m x 3.82m	24'8" x 12'6"
Bedroom	4.33m x 2.80m	14'2" x 9'2"
<b>Total internal area</b>	<b>51 sq.m</b>	<b>553 sq.ft.</b>

**Apartments 91 & 101 - The Hawk**

Kitchen/Living/Dining Room	7.53m x 3.77m	24'8" x 12'4"
Bedroom	4.08m x 2.85m	13'4" x 9'4"
<b>Total internal area</b>	<b>51 sq.m</b>	<b>553 sq.ft.</b>

**Apartments 92 & 102 - The Tempest**

Kitchen/Living/Dining Room	6.18m x 3.80m	20'3" x 12'5"
Bedroom 1	4.33m x 2.77m	14'2" x 9'1"
Bedroom 2	2.98m x 2.81m	9'9" x 9'2"
<b>Total internal area</b>	<b>63 sq.m</b>	<b>682 sq.ft.</b>

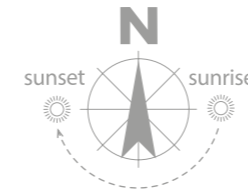
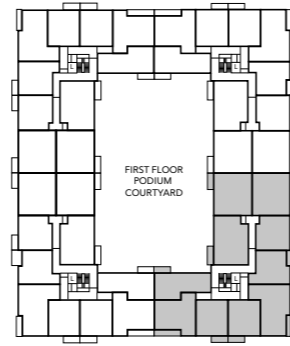
**Apartments 93 & 103 - The Nimrod**

Kitchen/Living/Dining Room	5.52m x 5.42m	18'1" x 17'9"
Bedroom	4.69m x 2.67m	15'4" x 8'9"
<b>Total internal area</b>	<b>56 sq.m</b>	<b>602 sq.ft.</b>

Some items shown in this key may be subject to change, and positions could vary from those indicated on this floorplate. Please refer to Sales Advisor for details of your selected plot. External finishes and landscaping may vary from plot to plot. Please refer to Sales Advisor for further details. All dimensions are approximate and should not be used for carpet sizes, appliance spaces, or furniture. Furniture not to scale and all positions are indicative. We operate a policy of continuous improvement and individual features such as kitchen and bathroom layouts, doors, windows, garages and elevational treatments may vary from time to time. Consequently these particulars should be treated as general guidance only and do not constitute a contract, part of a contract or a warranty. 03110-02/08/22.

# Aviation House

## First & Second Floor - South East



- 1 Bedroom
- 2 Bedroom



**Apartments 162 & 172 - The Hunter**

Kitchen/Living/Dining Room	7.12m x 3.85m	23'4" x 12'7"
Bedroom 1	3.92m x 3.43m	12'10" x 11'3"
Bedroom 2	3.92m x 2.84m	12'10" x 9'3"
<b>Total internal area</b>	<b>72 sq.m</b>	<b>779 sq.ft.</b>

**Apartments 168 & 178 - The Wallace**

Kitchen/Living/Dining Room	7.53m x 3.82m	24'8" x 12'6"
Bedroom	4.33m x 2.80m	14'2" x 9'2"
<b>Total internal area</b>	<b>51 sq.m</b>	<b>553 sq.ft.</b>

**Apartments 163, 164, 173 & 174 - The Harrier**

Kitchen/Living/Dining Room	7.97m x 3.30m	26'1" x 10'9"
Bedroom 1	4.35m x 2.79m	14'3" x 9'1"
Bedroom 2	4.35m x 2.69m	14'3" x 8'9"
<b>Total internal area</b>	<b>72 sq.m</b>	<b>780 sq.ft.</b>

**Apartments 169 & 179 - The Hawk**

Kitchen/Living/Dining Room	7.53m x 3.77m	24'8" x 12'4"
Bedroom	4.08m x 2.85m	13'4" x 9'4"
<b>Total internal area</b>	<b>51 sq.m</b>	<b>553 sq.ft.</b>

**Apartments 165 & 175 - The Halifax**

Kitchen/Living/Dining Room	7.15m x 4.05m	23'5" x 13'3"
Bedroom	4.07m x 3.15m	13'4" x 10'4"
<b>Total internal area</b>	<b>52 sq.m</b>	<b>555 sq.ft.</b>

**Apartments 170 & 180 - The Tempest**

Kitchen/Living/Dining Room	6.18m x 3.80m	20'3" x 12'5"
Bedroom 1	4.33m x 2.77m	14'2" x 9'1"
Bedroom 2	2.98m x 2.81m	9'9" x 9'2"
<b>Total internal area</b>	<b>63 sq.m</b>	<b>682 sq.ft.</b>

**Apartments 166 & 177 - The Canberra**

Kitchen/Living/Dining Room	6.25m x 3.30m	20'6" x 10'9"
Bedroom	3.70m x 3.67m	12'1" x 12'0"
<b>Total internal area</b>	<b>52 sq.m</b>	<b>557 sq.ft.</b>

**Apartments 171 & 181 - The Nimrod**

Kitchen/Living/Dining Room	5.52m x 5.42m	18'1" x 17'9"
Bedroom	4.69m x 2.67m	15'4" x 8'9"
<b>Total internal area</b>	<b>55 sq.m</b>	<b>596 sq.ft.</b>

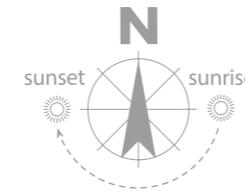
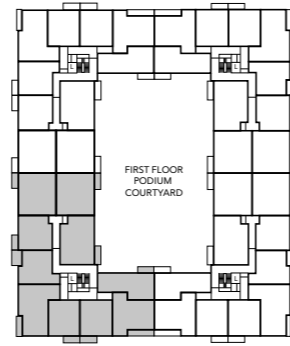
**Apartments 167 & 177 - The Blenheim**

Kitchen/Living/Dining Room	5.22m x 4.22m	17'1" x 13'10"
Bedroom 1	4.92m x 2.75m	16'1" x 9'0"
Bedroom 2	4.92m x 3.55m	16'1" x 11'7"
<b>Total internal area</b>	<b>71 sq.m</b>	<b>769 sq.ft.</b>

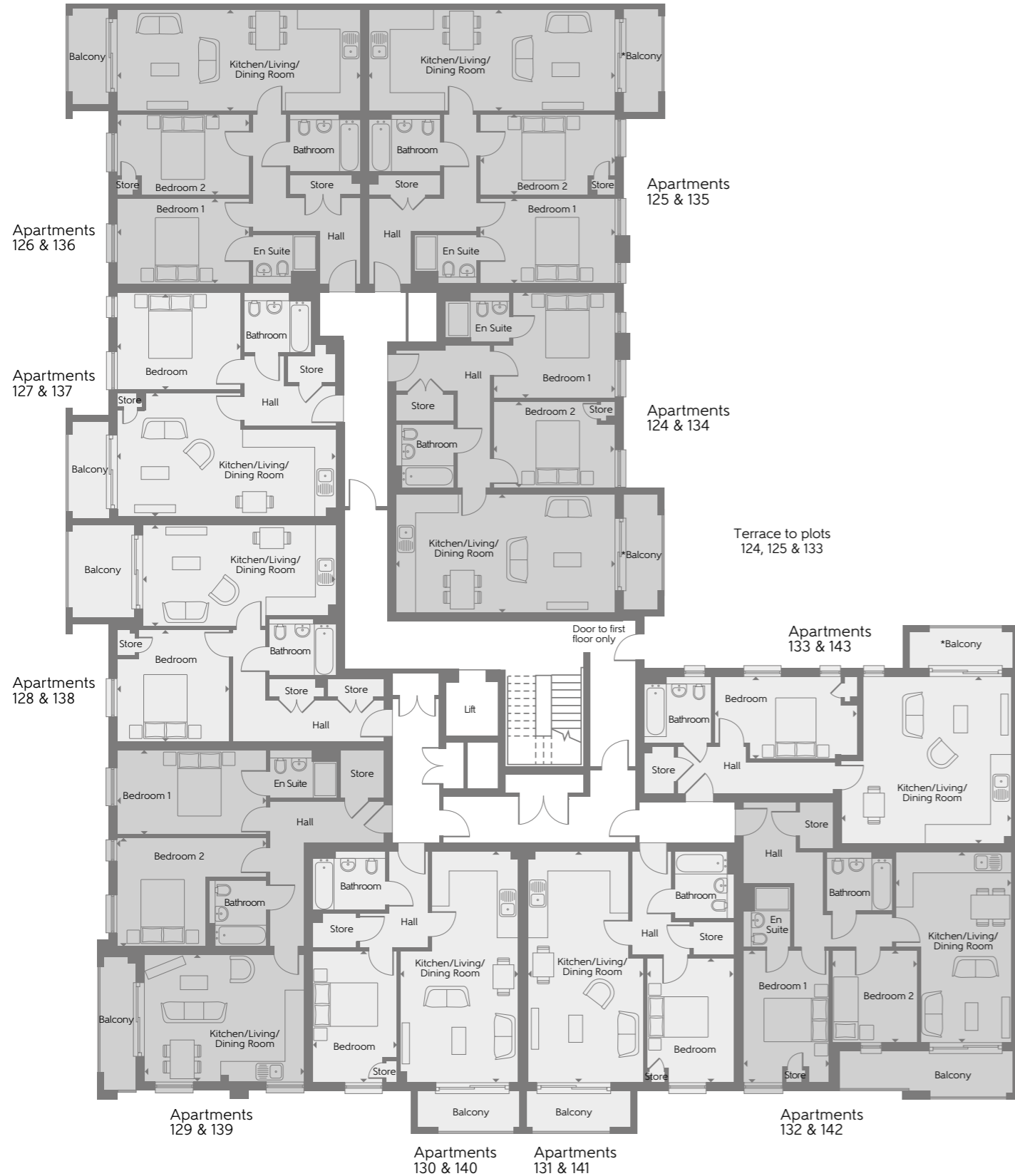
Some items shown in this key may be subject to change, and positions could vary from those indicated on this floorplate. Please refer to Sales Advisor for details of your selected plot. External finishes and landscaping may vary from plot to plot. Please refer to Sales Advisor for further details. All dimensions are approximate and should not be used for carpet sizes, appliance spaces, or furniture. Furniture not to scale and all positions are indicative. We operate a policy of continuous improvement and individual features such as kitchen and bathroom layouts, doors, windows, garages and elevational treatments may vary from time to time. Consequently these particulars should be treated as general guidance only and do not constitute a contract, part of a contract or a warranty. 03110-02/08/22.

# Aviation House

## First & Second Floor - South West



- 1 Bedroom
- 2 Bedroom



**Apartments 124 & 134 - The Hunter**

Kitchen/Living/Dining Room	7.12m x 3.85m	23'4" x 12'7"
Bedroom 1	3.92m x 3.43m	12'10" x 11'3"
Bedroom 2	3.92m x 2.84m	12'10" x 9'3"
<b>Total internal area</b>	<b>72 sq.m</b>	<b>779 sq.ft.</b>

**Apartments 125, 126, 135 & 136 - The Harrier**

Kitchen/Living/Dining Room	7.97m x 3.30m	26'1" x 10'9"
Bedroom 1	4.35m x 2.79m	14'3" x 9'1"
Bedroom 2	4.35m x 2.69m	14'3" x 8'9"
<b>Total internal area</b>	<b>72 sq.m</b>	<b>780 sq.ft.</b>

**Apartments 127 & 137 - The Halifax**

Kitchen/Living/Dining Room	7.15m x 4.05m	23'5" x 13'3"
Bedroom	4.07m x 3.15m	13'4" x 10'4"
<b>Total internal area</b>	<b>52 sq.m</b>	<b>555 sq.ft.</b>

**Apartments 128 & 138 - The Canberra**

Kitchen/Living/Dining Room	6.25m x 3.30m	20'6" x 10'9"
Bedroom	3.70m x 3.67m	12'1" x 12'0"
<b>Total internal area</b>	<b>52 sq.m</b>	<b>557 sq.ft.</b>

**Apartments 129 & 139 - The Blenheim**

Kitchen/Living/Dining Room	5.22m x 4.22m	17'1" x 13'10"
Bedroom 1	4.92m x 2.75m	16'1" x 9'0"
Bedroom 2	4.92m x 3.55m	16'1" x 11'7"
<b>Total internal area</b>	<b>71 sq.m</b>	<b>769 sq.ft.</b>

**Apartments 130 & 140 - The Wallace**

Kitchen/Living/Dining Room	7.53m x 3.82m	24'8" x 12'6"
Bedroom	4.33m x 2.80m	14'2" x 9'2"
<b>Total internal area</b>	<b>51 sq.m</b>	<b>553 sq.ft.</b>

**Apartments 131 & 141 - The Hawk**

Kitchen/Living/Dining Room	7.53m x 3.77m	24'8" x 12'4"
Bedroom	4.08m x 2.85m	13'4" x 9'4"
<b>Total internal area</b>	<b>51 sq.m</b>	<b>553 sq.ft.</b>

**Apartments 132 & 142 - The Tempest**

Kitchen/Living/Dining Room	6.18m x 3.80m	20'3" x 12'5"
Bedroom 1	4.33m x 2.77m	14'2" x 9'1"
Bedroom 2	2.98m x 2.81m	9'9" x 9'2"
<b>Total internal area</b>	<b>63 sq.m</b>	<b>682 sq.ft.</b>

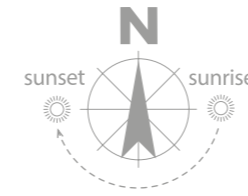
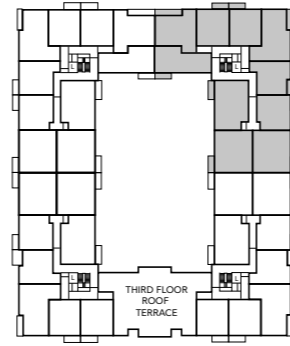
**Apartments 133 & 143 - The Nimrod**

Kitchen/Living/Dining Room	5.52m x 5.42m	18'1" x 17'9"
Bedroom	4.69m x 2.67m	15'4" x 8'9"
<b>Total internal area</b>	<b>55 sq.m</b>	<b>596 sq.ft.</b>

Some items shown in this key may be subject to change, and positions could vary from those indicated on this floorplate. Please refer to Sales Advisor for details of your selected plot. External finishes and landscaping may vary from plot to plot. Please refer to Sales Advisor for further details. All dimensions are approximate and should not be used for carpet sizes, appliance spaces, or furniture. Furniture not to scale and all positions are indicative. We operate a policy of continuous improvement and individual features such as kitchen and bathroom layouts, doors, windows, garages and elevational treatments may vary from time to time. Consequently these particulars should be treated as general guidance only and do not constitute a contract, part of a contract or a warranty. 03110-02/08/22.

# Aviation House

## Third Floor - North East



- 1 Bedroom
- 2 Bedroom



**Apartment 104 - The Hunter**

Kitchen/Living/Dining Room	7.12m x 3.85m	23'4" x 12'7"
Bedroom 1	3.92m x 3.43m	12'10" x 11'3"
Bedroom 2	3.92m x 2.84m	12'10" x 9'3"
<b>Total internal area</b>	<b>72 sq.m</b>	<b>779 sq.ft.</b>

**Apartments 105 & 106 - The Harrier**

Kitchen/Living/Dining Room	7.97m x 3.30m	26'1" x 10'9"
Bedroom 1	4.35m x 2.79m	14'3" x 9'1"
Bedroom 2	4.35m x 2.69m	14'3" x 8'9"
<b>Total internal area</b>	<b>72 sq.m</b>	<b>780 sq.ft.</b>

**Apartment 107 - The Halifax**

Kitchen/Living/Dining Room	7.15m x 4.05m	23'5" x 13'3"
Bedroom	4.07m x 3.15m	13'4" x 10'4"
<b>Total internal area</b>	<b>52 sq.m</b>	<b>555 sq.ft.</b>

**Apartment 108 - The Canberra**

Kitchen/Living/Dining Room	6.25m x 3.30m	20'6" x 10'9"
Bedroom	3.70m x 3.67m	12'1" x 12'0"
<b>Total internal area</b>	<b>52 sq.m</b>	<b>557 sq.ft.</b>

**Apartment 109 - The Blenheim**

Kitchen/Living/Dining Room	5.22m x 4.22m	17'1" x 13'10"
Bedroom 1	4.92m x 2.75m	16'1" x 9'0"
Bedroom 2	4.92m x 3.55m	16'1" x 11'7"
<b>Total internal area</b>	<b>71 sq.m</b>	<b>769 sq.ft.</b>

**Apartment 110 - The Wallace**

Kitchen/Living/Dining Room	7.53m x 3.82m	24'8" x 12'6"
Bedroom	4.33m x 2.80m	14'2" x 9'2"
<b>Total internal area</b>	<b>51 sq.m</b>	<b>553 sq.ft.</b>

**Apartment 111 - The Hawk**

Kitchen/Living/Dining Room	7.53m x 3.77m	24'8" x 12'4"
Bedroom	4.08m x 2.85m	13'4" x 9'4"
<b>Total internal area</b>	<b>51 sq.m</b>	<b>553 sq.ft.</b>

**Apartment 112 - The Tempest**

Kitchen/Living/Dining Room	6.18m x 3.80m	20'3" x 12'5"
Bedroom 1	4.33m x 2.77m	14'2" x 9'1"
Bedroom 2	2.98m x 2.81m	9'9" x 9'2"
<b>Total internal area</b>	<b>63 sq.m</b>	<b>682 sq.ft.</b>

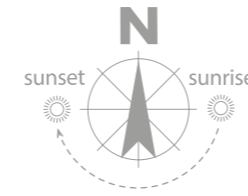
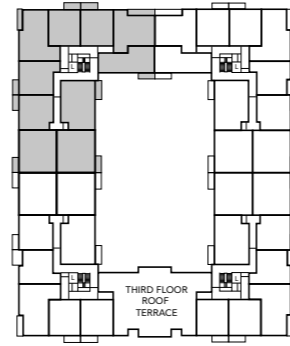
**Apartment 113 - The Nimrod**

Kitchen/Living/Dining Room	5.52m x 5.42m	18'1" x 17'9"
Bedroom	4.69m x 2.67m	15'4" x 8'9"
<b>Total internal area</b>	<b>56 sq.m</b>	<b>602 sq.ft.</b>

Some items shown in this key may be subject to change, and positions could vary from those indicated on this floorplate. Please refer to Sales Advisor for details of your selected plot. External finishes and landscaping may vary from plot to plot. Please refer to Sales Advisor for further details. All dimensions are approximate and should not be used for carpet sizes, appliance spaces, or furniture. Furniture not to scale and all positions are indicative. We operate a policy of continuous improvement and individual features such as kitchen and bathroom layouts, doors, windows, garages and elevational treatments may vary from time to time. Consequently these particulars should be treated as general guidance only and do not constitute a contract, part of a contract or a warranty. 03110-02/08/22.

# Aviation House

## Third Floor - North West



- 1 Bedroom
- 2 Bedroom



**Apartment 63 - The Hunter**

Kitchen/Living/Dining Room	7.12m x 3.85m	23'4" x 12'7"
Bedroom 1	3.92m x 3.43m	12'10" x 11'3"
Bedroom 2	3.92m x 2.84m	12'10" x 9'3"
<b>Total internal area</b>	<b>72 sq.m</b>	<b>779 sq.ft.</b>

**Apartments 64 & 65 - The Harrier**

Kitchen/Living/Dining Room	7.97m x 3.30m	26'1" x 10'9"
Bedroom 1	4.35m x 2.79m	14'3" x 9'1"
Bedroom 2	4.35m x 2.69m	14'3" x 8'9"
<b>Total internal area</b>	<b>72 sq.m</b>	<b>780 sq.ft.</b>

**Apartment 66 - The Halifax**

Kitchen/Living/Dining Room	7.15m x 4.05m	23'5" x 13'3"
Bedroom	4.07m x 3.15m	13'4" x 10'4"
<b>Total internal area</b>	<b>52 sq.m</b>	<b>555 sq.ft.</b>

**Apartment 67 - The Canberra**

Kitchen/Living/Dining Room	6.25m x 3.30m	20'6" x 10'9"
Bedroom	3.70m x 3.67m	12'1" x 12'0"
<b>Total internal area</b>	<b>52 sq.m</b>	<b>557 sq.ft.</b>

**Apartment 68 - The Blenheim**

Kitchen/Living/Dining Room	5.22m x 4.22m	17'1" x 13'10"
Bedroom 1	4.92m x 2.75m	16'1" x 9'0"
Bedroom 2	4.92m x 3.55m	16'1" x 11'7"
<b>Total internal area</b>	<b>71 sq.m</b>	<b>769 sq.ft.</b>

**Apartment 69 - The Wallace**

Kitchen/Living/Dining Room	7.53m x 3.82m	24'8" x 12'6"
Bedroom	4.33m x 2.80m	14'2" x 9'2"
<b>Total internal area</b>	<b>51 sq.m</b>	<b>553 sq.ft.</b>

**Apartment 70 - The Hawk**

Kitchen/Living/Dining Room	7.53m x 3.77m	24'8" x 12'4"
Bedroom	4.08m x 2.85m	13'4" x 9'4"
<b>Total internal area</b>	<b>51 sq.m</b>	<b>553 sq.ft.</b>

**Apartment 71 - The Tempest**

Kitchen/Living/Dining Room	6.18m x 3.80m	20'3" x 12'5"
Bedroom 1	4.33m x 2.77m	14'2" x 9'1"
Bedroom 2	2.98m x 2.81m	9'9" x 9'2"
<b>Total internal area</b>	<b>63 sq.m</b>	<b>682 sq.ft.</b>

**Apartment 72 - The Nimrod**

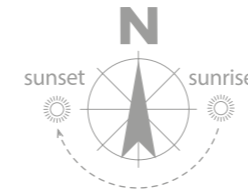
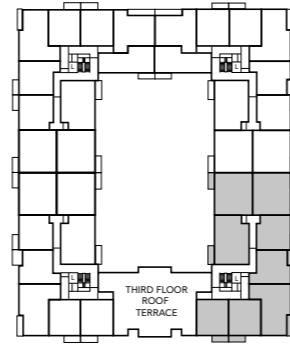
Kitchen/Living/Dining Room	5.52m x 5.42m	18'1" x 17'9"
Bedroom	4.69m x 2.67m	15'4" x 8'9"
<b>Total internal area</b>	<b>56 sq.m</b>	<b>602 sq.ft.</b>

Some items shown in this key may be subject to change, and positions could vary from those indicated on this floorplate. Please refer to Sales Advisor for details of your selected plot. External finishes and landscaping may vary from plot to plot. Please refer to Sales Advisor for further details. All dimensions are approximate and should not be used for carpet sizes, appliance spaces, or furniture. Furniture not to scale and all positions are indicative. We operate a policy of continuous improvement and individual features such as kitchen and bathroom layouts, doors, windows, garages and elevational treatments may vary from time to time. Consequently these particulars should be treated as general guidance only and do not constitute a contract, part of a contract or a warranty. 03110-02/08/22.



# Aviation House

## Third Floor - South East



- 1 Bedroom
- 2 Bedroom



### Apartment 182 - The Hunter

Kitchen/Living/Dining Room	7.12m x 3.85m	23'4" x 12'7"
Bedroom 1	3.92m x 3.43m	12'10" x 11'3"
Bedroom 2	3.92m x 2.84m	12'10" x 9'3"
<b>Total internal area</b>	<b>72 sq.m</b>	<b>779 sq.ft.</b>

### Apartment 188 - The Wallace

Kitchen/Living/Dining Room	7.53m x 3.82m	24'8" x 12'6"
Bedroom	4.33m x 2.80m	14'2" x 9'2"
<b>Total internal area</b>	<b>51 sq.m</b>	<b>553 sq.ft.</b>

### Apartments 183 & 184 - The Harrier

Kitchen/Living/Dining Room	7.97m x 3.30m	26'1" x 10'9"
Bedroom 1	4.35m x 2.79m	14'3" x 9'1"
Bedroom 2	4.35m x 2.69m	14'3" x 8'9"
<b>Total internal area</b>	<b>72 sq.m</b>	<b>780 sq.ft.</b>

### Apartment 189 - The Hawk

Kitchen/Living/Dining Room	7.53m x 3.77m	24'8" x 12'4"
Bedroom	4.08m x 2.85m	13'4" x 9'4"
<b>Total internal area</b>	<b>51 sq.m</b>	<b>553 sq.ft.</b>

### Apartment 185 - The Halifax

Kitchen/Living/Dining Room	7.15m x 4.05m	23'5" x 13'3"
Bedroom	4.07m x 3.15m	13'4" x 10'4"
<b>Total internal area</b>	<b>52 sq.m</b>	<b>555 sq.ft.</b>

### Apartment 186 - The Canberra

Kitchen/Living/Dining Room	6.25m x 3.30m	20'6" x 10'9"
Bedroom	3.70m x 3.67m	12'1" x 12'0"
<b>Total internal area</b>	<b>52 sq.m</b>	<b>557 sq.ft.</b>

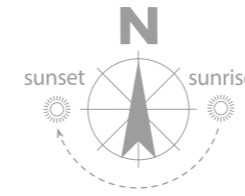
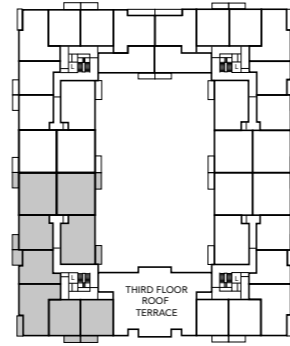
### Apartment 187 - The Blenheim

Kitchen/Living/Dining Room	5.22m x 4.22m	17'1" x 13'10"
Bedroom 1	4.92m x 2.75m	16'1" x 9'0"
Bedroom 2	4.92m x 3.55m	16'1" x 11'7"
<b>Total internal area</b>	<b>71 sq.m</b>	<b>769 sq.ft.</b>

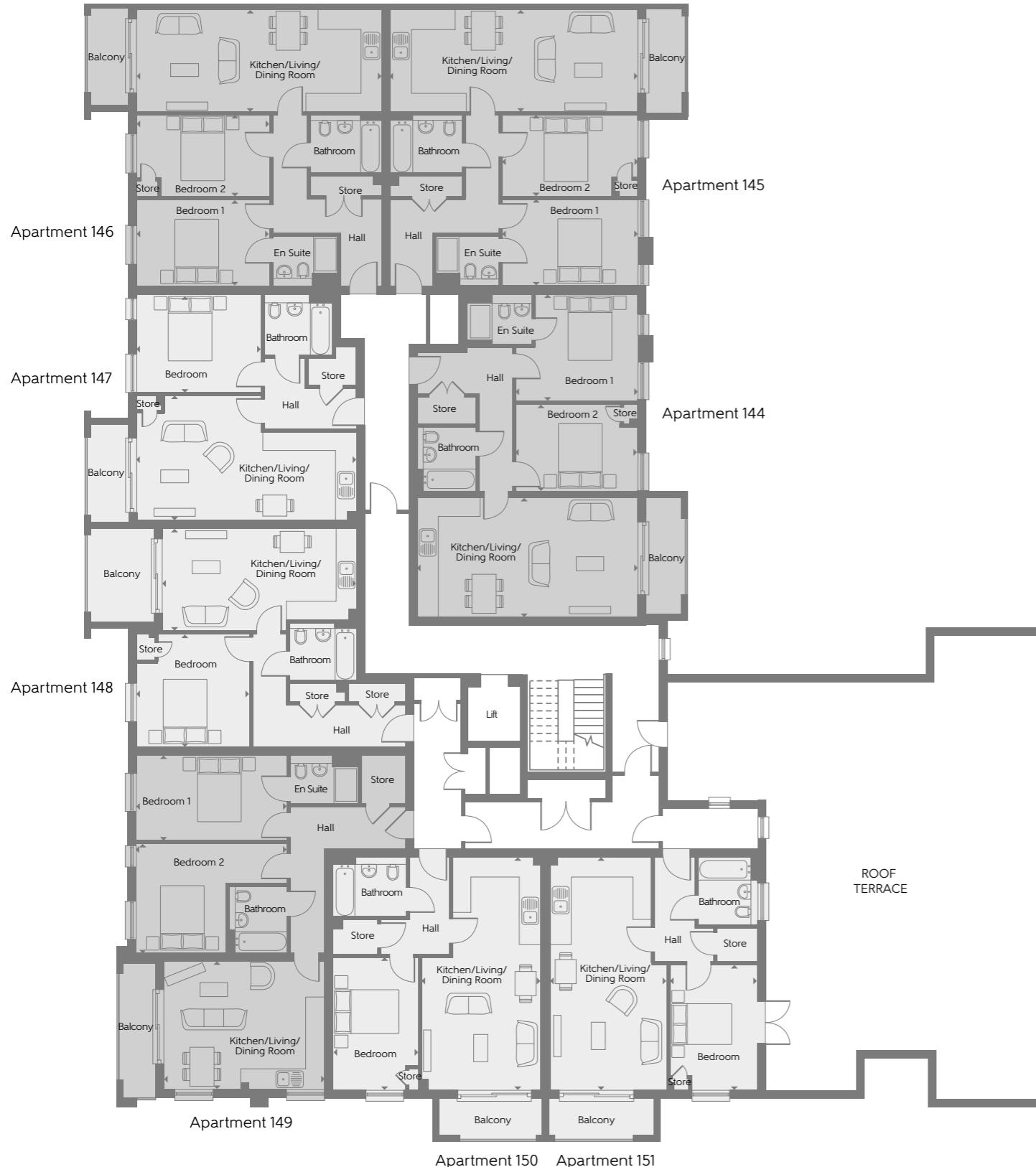
Some items shown in this key may be subject to change, and positions could vary from those indicated on this floorplate. Please refer to Sales Advisor for details of your selected plot. External finishes and landscaping may vary from plot to plot. Please refer to Sales Advisor for further details. All dimensions are approximate and should not be used for carpet sizes, appliance spaces, or furniture. Furniture not to scale and all positions are indicative. We operate a policy of continuous improvement and individual features such as kitchen and bathroom layouts, doors, windows, garages and elevational treatments may vary from time to time. Consequently these particulars should be treated as general guidance only and do not constitute a contract, part of a contract or a warranty. 03110-02/08/22.

# Aviation House

## Third Floor - South West



- 1 Bedroom
- 2 Bedroom



### Apartment 144 - The Hunter

Kitchen/Living/ Dining Room	7.12m x 3.85m	23'4" x 12'7"
Bedroom 1	3.92m x 3.43m	12'10" x 11'3"
Bedroom 2	3.92m x 2.84m	12'10" x 9'3"
<b>Total internal area</b>	<b>72 sq.m</b>	<b>779 sq.ft.</b>

### Apartment 150 - The Wallace

Kitchen/Living/ Dining Room	7.53m x 3.82m	24'8" x 12'6"
Bedroom	4.33m x 2.80m	14'2" x 9'2"
<b>Total internal area</b>	<b>51 sq.m</b>	<b>553 sq.ft.</b>

### Apartments 145 & 146 - The Harrier

Kitchen/Living/ Dining Room	7.97m x 3.30m	26'1" x 10'9"
Bedroom 1	4.35m x 2.79m	14'3" x 9'1"
Bedroom 2	4.35m x 2.69m	14'3" x 8'9"
<b>Total internal area</b>	<b>72 sq.m</b>	<b>780 sq.ft.</b>

### Apartment 151 - The Hawk

Kitchen/Living/ Dining Room	7.53m x 3.77m	24'8" x 12'4"
Bedroom	4.08m x 2.85m	13'4" x 9'4"
<b>Total internal area</b>	<b>51 sq.m</b>	<b>553 sq.ft.</b>

### Apartment 147 - The Halifax

Kitchen/Living/ Dining Room	7.15m x 4.05m	23'5" x 13'3"
Bedroom	4.07m x 3.15m	13'4" x 10'4"
<b>Total internal area</b>	<b>52 sq.m</b>	<b>555 sq.ft.</b>

### Apartment 148 - The Canberra

Kitchen/Living/ Dining Room	6.25m x 3.30m	20'6" x 10'9"
Bedroom	3.70m x 3.67m	12'1" x 12'0"
<b>Total internal area</b>	<b>52 sq.m</b>	<b>557 sq.ft.</b>

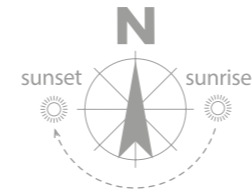
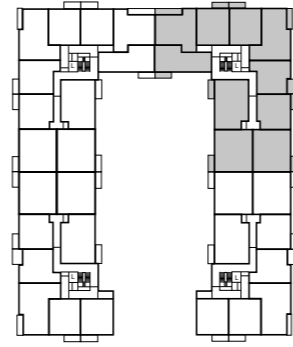
### Apartment 149 - The Blenheim

Kitchen/Living/ Dining Room	5.22m x 4.22m	17'1" x 13'10"
Bedroom 1	4.92m x 2.75m	16'1" x 9'0"
Bedroom 2	4.92m x 3.55m	16'1" x 11'7"
<b>Total internal area</b>	<b>71 sq.m</b>	<b>769 sq.ft.</b>

Some items shown in this key may be subject to change, and positions could vary from those indicated on this floorplate. Please refer to Sales Advisor for details of your selected plot. External finishes and landscaping may vary from plot to plot. Please refer to Sales Advisor for further details. All dimensions are approximate and should not be used for carpet sizes, appliance spaces, or furniture. Furniture not to scale and all positions are indicative. We operate a policy of continuous improvement and individual features such as kitchen and bathroom layouts, doors, windows, garages and elevational treatments may vary from time to time. Consequently these particulars should be treated as general guidance only and do not constitute a contract, part of a contract or a warranty. 03110-02/08/22.

# Aviation House

## Fourth Floor - North East



- 1 Bedroom
- 2 Bedroom



**Apartment 114 - The Hunter**

Kitchen/Living/ Dining Room	7.12m x 3.85m	23'4" x 12'7"
Bedroom 1	3.92m x 3.43m	12'10" x 11'3"
Bedroom 2	3.92m x 2.84m	12'10" x 9'3"
<b>Total internal area</b>	<b>72 sq.m</b>	<b>779 sq.ft.</b>

**Apartments 115 & 116 - The Harrier**

Kitchen/Living/ Dining Room	7.97m x 3.30m	26'1" x 10'9"
Bedroom 1	4.35m x 2.79m	14'3" x 9'1"
Bedroom 2	4.35m x 2.69m	14'3" x 8'9"
<b>Total internal area</b>	<b>72 sq.m</b>	<b>780 sq.ft.</b>

**Apartment 117 - The Halifax**

Kitchen/Living/ Dining Room	7.15m x 4.05m	23'5" x 13'3"
Bedroom	4.07m x 3.15m	13'4" x 10'4"
<b>Total internal area</b>	<b>52 sq.m</b>	<b>555 sq.ft.</b>

**Apartment 118 - The Canberra**

Kitchen/Living/ Dining Room	6.25m x 3.30m	20'6" x 10'9"
Bedroom	3.70m x 3.67m	12'1" x 12'0"
<b>Total internal area</b>	<b>52 sq.m</b>	<b>557 sq.ft.</b>

**Apartment 119 - The Blenheim**

Kitchen/Living/ Dining Room	5.22m x 4.22m	17'1" x 13'10"
Bedroom 1	4.92m x 2.75m	16'1" x 9'0"
Bedroom 2	4.92m x 3.55m	16'2" x 11'7"
<b>Total internal area</b>	<b>71 sq.m</b>	<b>769 sq.ft.</b>

**Apartment 120 - The Wallace**

Kitchen/Living/ Dining Room	7.53m x 3.82m	24'8" x 12'6"
Bedroom	4.33m x 2.80m	14'2" x 9'2"
<b>Total internal area</b>	<b>51 sq.m</b>	<b>553 sq.ft.</b>

**Apartment 121 - The Hawk**

Kitchen/Living/ Dining Room	7.53m x 3.77m	24'8" x 12'4"
Bedroom	4.08m x 2.85m	13'4" x 9'4"
<b>Total internal area</b>	<b>51 sq.m</b>	<b>553 sq.ft.</b>

**Apartment 122 - The Tempest**

Kitchen/Living/ Dining Room	6.18m x 3.80m	20'3" x 12'5"
Bedroom 1	4.33m x 2.77m	14'2" x 9'1"
Bedroom 2	2.98m x 2.81m	9'9" x 9'2"
<b>Total internal area</b>	<b>63 sq.m</b>	<b>682 sq.ft.</b>

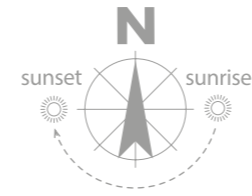
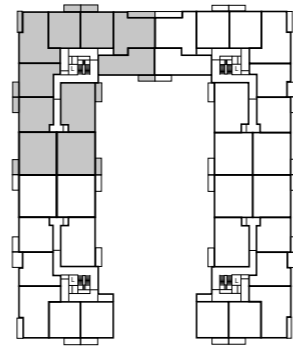
**Apartment 123 - The Nimrod**

Kitchen/Living/ Dining Room	5.52m x 5.42m	18'1" x 17'9"
Bedroom	4.69m x 2.67m	15'4" x 8'9"
<b>Total internal area</b>	<b>56 sq.m</b>	<b>602 sq.ft.</b>

Some items shown in this key may be subject to change, and positions could vary from those indicated on this floorplate. Please refer to Sales Advisor for details of your selected plot. External finishes and landscaping may vary from plot to plot. Please refer to Sales Advisor for further details. All dimensions are approximate and should not be used for carpet sizes, appliance spaces, or furniture. Furniture not to scale and all positions are indicative. We operate a policy of continuous improvement and individual features such as kitchen and bathroom layouts, doors, windows, garages and elevational treatments may vary from time to time. Consequently these particulars should be treated as general guidance only and do not constitute a contract, part of a contract or a warranty. 03110-02/08/22.

# Aviation House

## Fourth Floor - North West



- 1 Bedroom
- 2 Bedroom



### Apartment 73 - The Hunter

Kitchen/Living/ Dining Room	7.12m x 3.85m	23'4" x 12'7"
Bedroom 1	3.92m x 3.43m	12'10" x 11'3"
Bedroom 2	3.92m x 2.84m	12'10" x 9'3"
<b>Total internal area</b>	<b>72 sq.m</b>	<b>779 sq.ft.</b>

### Apartments 74 & 75 - The Harrier

Kitchen/Living/ Dining Room	7.97m x 3.30m	26'1" x 10'9"
Bedroom 1	4.35m x 2.79m	14'3" x 9'1"
Bedroom 2	4.35m x 2.69m	14'3" x 8'9"
<b>Total internal area</b>	<b>72 sq.m</b>	<b>780 sq.ft.</b>

### Apartment 76 - The Halifax

Kitchen/Living/ Dining Room	7.15m x 4.05m	23'5" x 13'3"
Bedroom	4.07m x 3.15m	13'4" x 10'4"
<b>Total internal area</b>	<b>52 sq.m</b>	<b>555 sq.ft.</b>

### Apartment 77 - The Canberra

Kitchen/Living/ Dining Room	6.25m x 3.30m	20'6" x 10'9"
Bedroom	3.70m x 3.67m	12'1" x 12'0"
<b>Total internal area</b>	<b>52 sq.m</b>	<b>557 sq.ft.</b>

### Apartment 78 - The Blenheim

Kitchen/Living/ Dining Room	5.22m x 4.22m	17'1" x 13'10"
Bedroom 1	4.92m x 2.75m	16'1" x 9'0"
Bedroom 2	4.92m x 3.55m	16'1" x 11'7"
<b>Total internal area</b>	<b>71 sq.m</b>	<b>769 sq.ft.</b>

### Apartment 79 - The Wallace

Kitchen/Living/ Dining Room	7.53m x 3.82m	24'8" x 12'6"
Bedroom	4.33m x 2.80m	14'2" x 9'2"
<b>Total internal area</b>	<b>51 sq.m</b>	<b>553 sq.ft.</b>

### Apartment 80 - The Hawk

Kitchen/Living/ Dining Room	7.53m x 3.77m	24'8" x 12'4"
Bedroom	4.08m x 2.85m	13'4" x 9'4"
<b>Total internal area</b>	<b>51 sq.m</b>	<b>553 sq.ft.</b>

### Apartment 81 - The Tempest

Kitchen/Living/ Dining Room	6.18m x 3.80m	20'3" x 12'5"
Bedroom 1	4.33m x 2.77m	14'2" x 9'1"
Bedroom 2	2.98m x 2.81m	9'9" x 9'2"
<b>Total internal area</b>	<b>63 sq.m</b>	<b>682 sq.ft.</b>

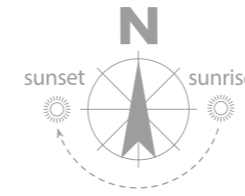
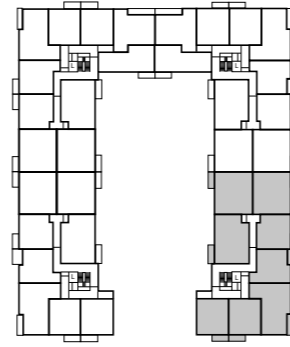
### Apartment 82 - The Nimrod

Kitchen/Living/ Dining Room	5.52m x 5.42m	18'1" x 17'9"
Bedroom	4.69m x 2.67m	15'4" x 8'9"
<b>Total internal area</b>	<b>56 sq.m</b>	<b>602 sq.ft.</b>

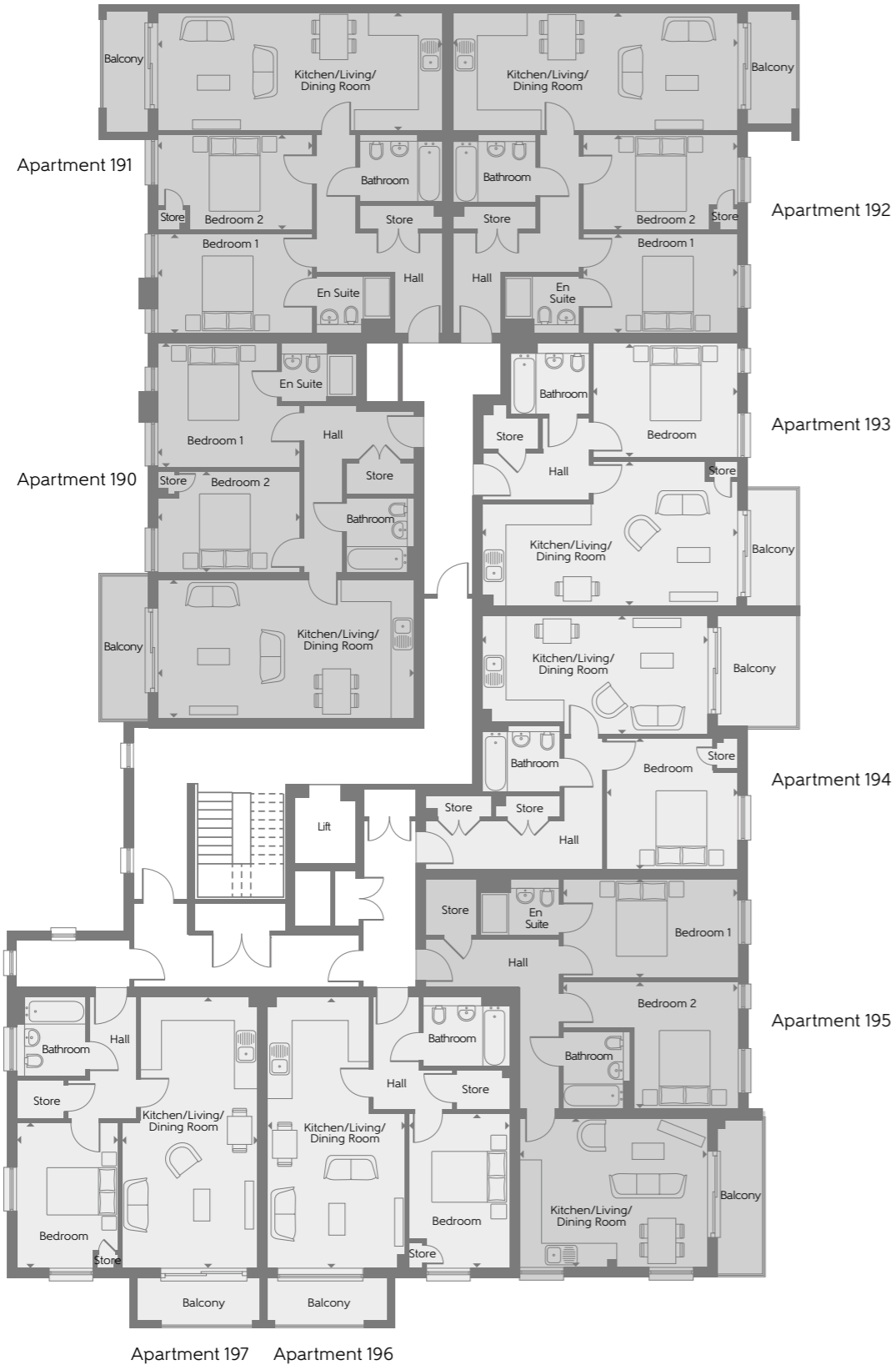
Some items shown in this key may be subject to change, and positions could vary from those indicated on this floorplate. Please refer to Sales Advisor for details of your selected plot. External finishes and landscaping may vary from plot to plot. Please refer to Sales Advisor for further details. All dimensions are approximate and should not be used for carpet sizes, appliance spaces, or furniture. Furniture not to scale and all positions are indicative. We operate a policy of continuous improvement and individual features such as kitchen and bathroom layouts, doors, windows, garages and elevational treatments may vary from time to time. Consequently these particulars should be treated as general guidance only and do not constitute a contract, part of a contract or a warranty. 03110-02/08/22.

# Aviation House

## Fourth Floor - South East



- 1 Bedroom
- 2 Bedroom



### Apartment 190 - The Hunter

Kitchen/Living/ Dining Room	7.12m x 3.85m	23'4" x 12'7"
Bedroom 1	3.92m x 3.43m	12'10" x 11'3"
Bedroom 2	3.92m x 2.84m	12'10" x 9'3"
<b>Total internal area</b>	<b>72 sq.m</b>	<b>779 sq.ft.</b>

### Apartment 196 - The Wallace

Kitchen/Living/ Dining Room	7.53m x 3.82m	24'8" x 12'6"
Bedroom	4.33m x 2.80m	14'2" x 9'2"
<b>Total internal area</b>	<b>51 sq.m</b>	<b>553 sq.ft.</b>

### Apartments 191 & 192 - The Harrier

Kitchen/Living/ Dining Room	7.97m x 3.30m	26'1" x 10'9"
Bedroom 1	4.35m x 2.79m	14'3" x 9'1"
Bedroom 2	4.35m x 2.69m	14'3" x 8'9"
<b>Total internal area</b>	<b>72 sq.m</b>	<b>780 sq.ft.</b>

### Apartment 197 - The Hawk

Kitchen/Living/ Dining Room	7.53m x 3.77m	24'8" x 12'4"
Bedroom	4.08m x 2.85m	13'4" x 9'4"
<b>Total internal area</b>	<b>51 sq.m</b>	<b>553 sq.ft.</b>

### Apartment 192 - The Halifax

Kitchen/Living/ Dining Room	7.15m x 4.05m	23'5" x 13'3"
Bedroom	4.07m x 3.15m	13'4" x 10'4"
<b>Total internal area</b>	<b>52 sq.m</b>	<b>555 sq.ft.</b>

### Apartment 194 - The Canberra

Kitchen/Living/ Dining Room	6.25m x 3.30m	20'6" x 10'9"
Bedroom	3.70m x 3.67m	12'1" x 12'0"
<b>Total internal area</b>	<b>52 sq.m</b>	<b>557 sq.ft.</b>

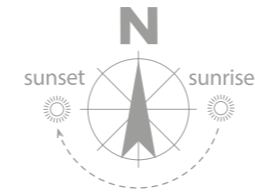
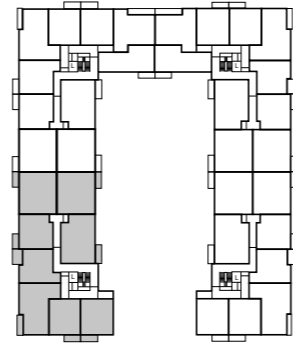
### Apartment 195 - The Blenheim

Kitchen/Living/ Dining Room	5.22m x 4.22m	17'1" x 13'10"
Bedroom 1	4.92m x 2.75m	16'1" x 9'0"
Bedroom 2	4.92m x 3.55m	16'1" x 11'7"
<b>Total internal area</b>	<b>71 sq.m</b>	<b>769 sq.ft.</b>

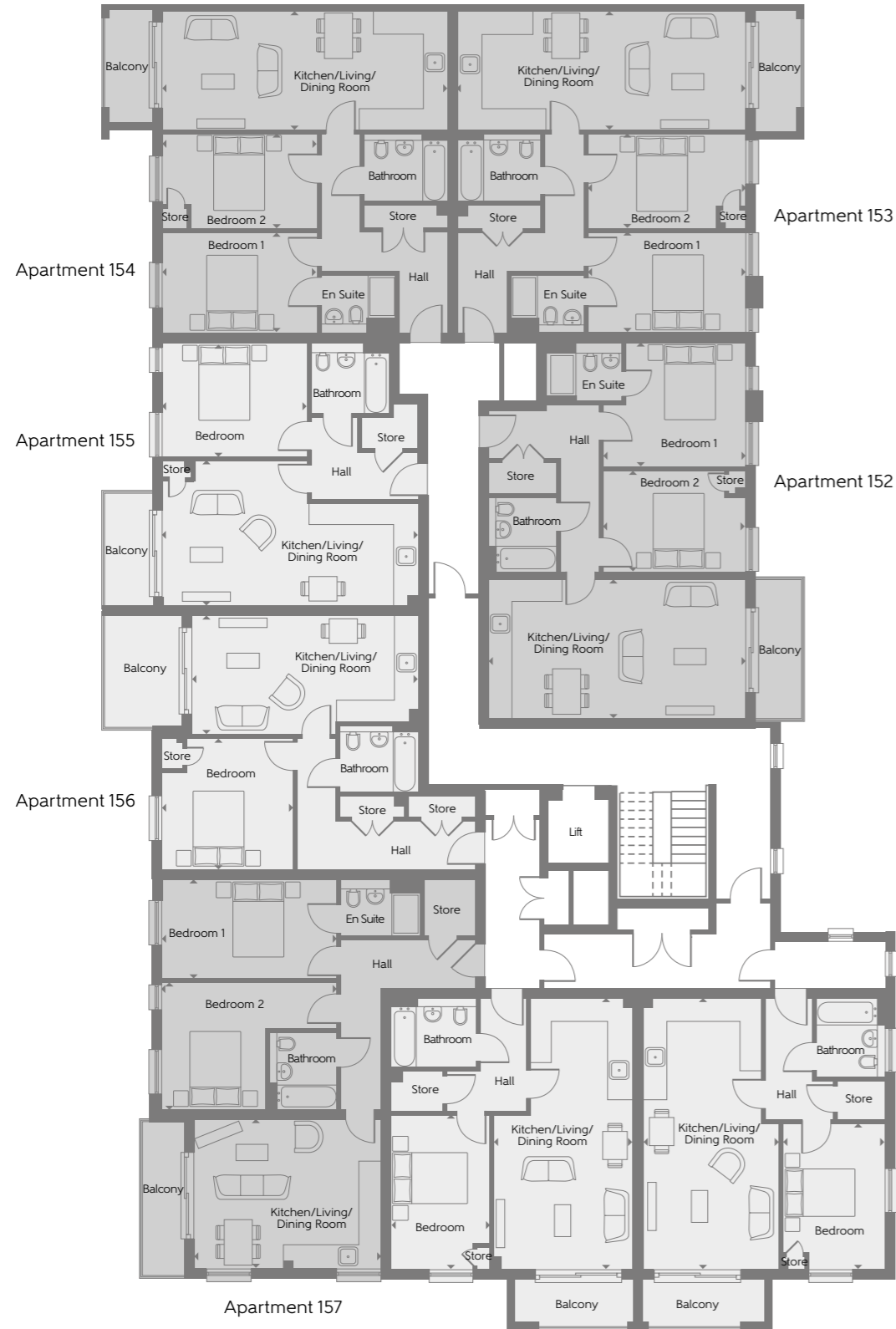
Some items shown in this key may be subject to change, and positions could vary from those indicated on this floorplate. Please refer to Sales Advisor for details of your selected plot. External finishes and landscaping may vary from plot to plot. Please refer to Sales Advisor for further details. All dimensions are approximate and should not be used for carpet sizes, appliance spaces, or furniture. Furniture not to scale and all positions are indicative. We operate a policy of continuous improvement and individual features such as kitchen and bathroom layouts, doors, windows, garages and elevational treatments may vary from time to time. Consequently these particulars should be treated as general guidance only and do not constitute a contract, part of a contract or a warranty. 03110-02/08/22.

# Aviation House

## Fourth Floor - South West



- 1 Bedroom
- 2 Bedroom



### Apartment 152 - The Hunter

Kitchen/Living/ Dining Room	7.12m x 3.85m	23'4" x 12'7"
Bedroom 1	3.92m x 3.43m	12'10" x 11'3"
Bedroom 2	3.92m x 2.84m	12'10" x 9'3"
<b>Total internal area</b>	<b>72 sq.m</b>	<b>779 sq.ft.</b>

### Apartment 158 - The Wallace

Kitchen/Living/ Dining Room	7.53m x 3.82m	24'8" x 12'6"
Bedroom	4.33m x 2.80m	14'2" x 9'2"
<b>Total internal area</b>	<b>51 sq.m</b>	<b>553 sq.ft.</b>

### Apartments 153 & 154 - The Harrier

Kitchen/Living/ Dining Room	7.97m x 3.30m	26'1" x 10'9"
Bedroom 1	4.35m x 2.79m	14'3" x 9'1"
Bedroom 2	4.35m x 2.69m	14'3" x 8'9"
<b>Total internal area</b>	<b>72 sq.m</b>	<b>780 sq.ft.</b>

### Apartment 159 - The Hawk

Kitchen/Living/ Dining Room	7.53m x 3.77m	24'8" x 12'4"
Bedroom	4.08m x 2.85m	13'4" x 9'4"
<b>Total internal area</b>	<b>51 sq.m</b>	<b>553 sq.ft.</b>

### Apartment 155 - The Halifax

Kitchen/Living/ Dining Room	7.15m x 4.05m	23'5" x 13'3"
Bedroom	4.07m x 3.15m	13'4" x 10'4"
<b>Total internal area</b>	<b>52 sq.m</b>	<b>555 sq.ft.</b>

### Apartment 156 - The Canberra

Kitchen/Living/ Dining Room	6.25m x 3.30m	20'6" x 10'9"
Bedroom	3.70m x 3.67m	12'1" x 12'0"
<b>Total internal area</b>	<b>52 sq.m</b>	<b>557 sq.ft.</b>

### Apartment 157 - The Blenheim

Kitchen/Living/ Dining Room	5.22m x 4.22m	17'1" x 13'10"
Bedroom 1	4.92m x 2.75m	16'1" x 9'0"
Bedroom 2	4.92m x 3.55m	16'1" x 11'7"
<b>Total internal area</b>	<b>71 sq.m</b>	<b>769 sq.ft.</b>

Some items shown in this key may be subject to change, and positions could vary from those indicated on this floorplate. Please refer to Sales Advisor for details of your selected plot. External finishes and landscaping may vary from plot to plot. Please refer to Sales Advisor for further details. All dimensions are approximate and should not be used for carpet sizes, appliance spaces, or furniture. Furniture not to scale and all positions are indicative. We operate a policy of continuous improvement and individual features such as kitchen and bathroom layouts, doors, windows, garages and elevational treatments may vary from time to time. Consequently these particulars should be treated as general guidance only and do not constitute a contract, part of a contract or a warranty. 03110-02/08/22.



## Specification

### Kitchen

Stylish, contemporary kitchen units with soft close doors and drawers  
100mm high upstand to match worksurface  
Zanussi stainless steel fan oven, Zanussi stainless steel ceramic hob and integrated Zanussi chimney extractor hood

### Lighting

Energy efficient downlighters to kitchen, bathroom and en suite  
Energy efficient pendant lights to living/dining room, hallway and bedrooms

### Electrical

Media points in living/dining room and bedroom 1  
USB socket in kitchen, living/dining room and bedroom 1

### Bathroom and En Suite

Roca sanitaryware with chrome fittings  
Full height tiling around bath in en suite  
Half height tiling to all walls

### External

Patio/balcony lighting  
Video door entry system with mounted handset

### General

Pre-wiring for alarm system  
10 year NHBC warranty  
2 year Bellway Customer Care