

THE LYMINGTON

THREE BEDROOM HOME
 PLOTS 39, 40, 51, 52, 53, 54,
 82, 83, 86, 87 & 111

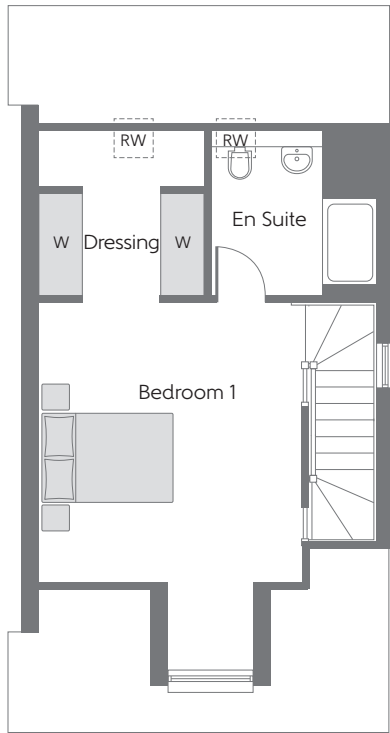


Please note plots 39, 40, 51, 52, 53 & 54 has weatherboard finish

Cks - Cloakroom W Fitted Wardrobe WS - Wardrobe Space (suggestion only, wardrobe not included) RW - Roof Window ---- - Reduced Head Height B - Boiler

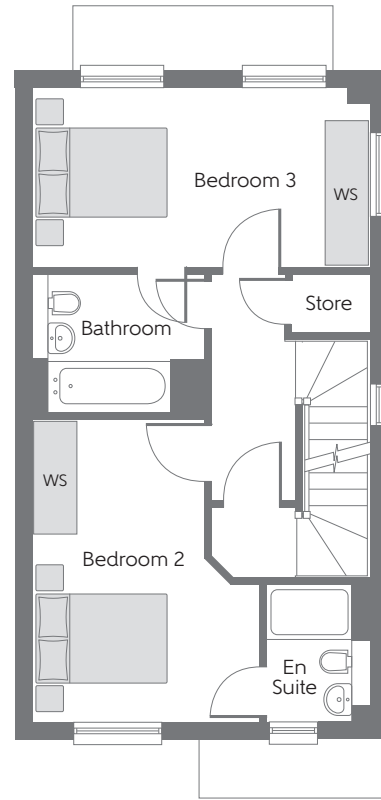
Furniture arrangements are for illustrative purposes only. Items are not included, nor to scale.

The items shown in this key may be subject to change, and positions could vary from those indicated on this floorplan. Please refer to Sales Advisor for details of your selected plot. Computer generated image shown. External finishes, landscaping and configuration may vary from plot to plot. Please refer to Sales Advisor for further details. All dimensions are approximate and should not be used for carpet sizes, appliance spaces or furniture. We operate a policy of continuous improvement and individual features such as kitchen and bathroom layouts, doors, windows, garages and elevational treatments may vary from time to time. Consequently these particulars should be treated as general guidance only and do not constitute a contract, part of a contract or a warranty. The Lacemaker (HT11)



Second Floor

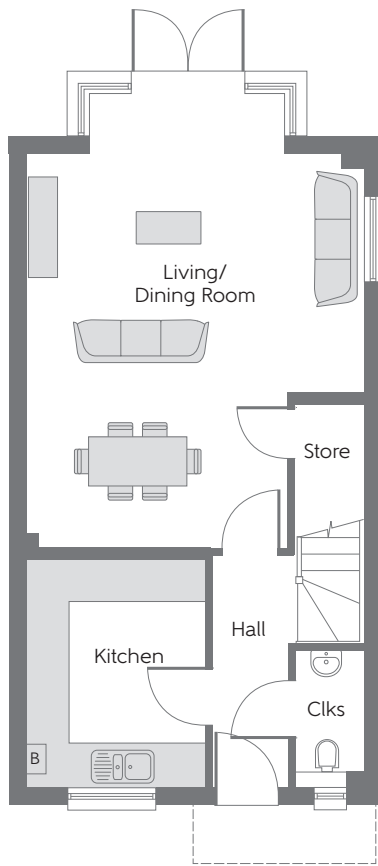
Window to plots 39, 40, 51, 52, 53 & 54 only



First Floor

Window to plots 39, 40, 51, 52, 53 & 54 only

Window to plots 39, 40, 51, 52, 53 & 54 only



Ground Floor

Window to plots 39, 40, 51, 52, 53 & 54 only

GROUND FLOOR

Kitchen	3.17m x 2.51m	10'5" x 8'3"
Living/ Dining Room	5.47m x 4.67m (max) (max)	17'11" x 15'4" (max) (max)
Cloakroom	1.90m x 0.94m	6'3" x 3'1"

FIRST FLOOR

Bedroom 2	4.21m x 3.13m (max)	13'10" x 10'3" (max)
Bedroom 2 En Suite	1.90m x 1.45m	6'3" x 4'9"
Bedroom 3	4.67m x 2.48m	15'4" x 8'2"
Bathroom	2.38m x 1.93m	7'10" x 6'4"

SECOND FLOOR

Bedroom 1	4.95m x 3.63m (max) (max)	16'3" x 11'11" (max) (max)
Bedroom 1 En Suite	2.32m x 2.29m	7'7" x 7'6"
Dressing	2.29m x 1.82m	7'6" x 6'0"