

# The Elton & Elton Special

Four bedroom home

---



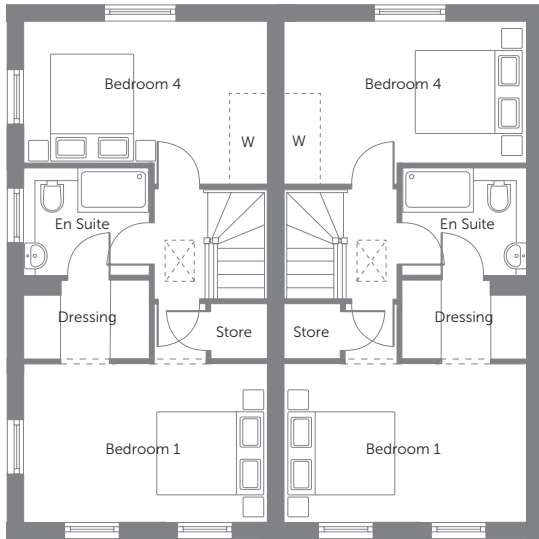
Bellway Homes (West Midlands Division)  
Bellway House, Relay Point, Relay Drive,  
Tamworth, Staffordshire B77 5PA

Telephone: 01827 255 755  
[www.bellway.co.uk](http://www.bellway.co.uk)

**Bellway**

## The Elton Special

## The Elton

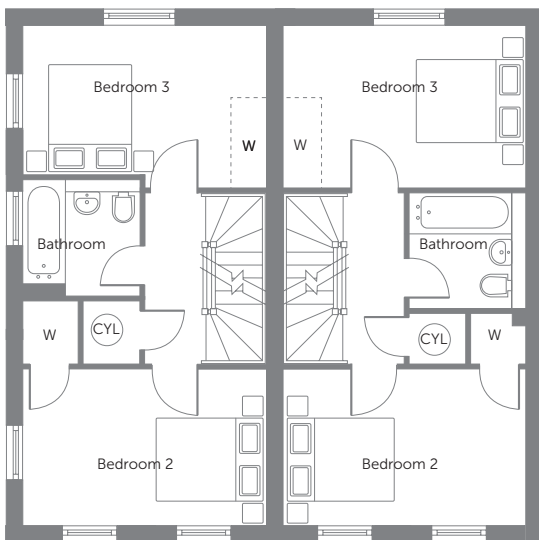


### The Elton Special - Second Floor

|           |                          |                        |
|-----------|--------------------------|------------------------|
| Bedroom 1 | 4.095m x 2.685m          | 13'5" x 8'9"           |
| Bedroom 4 | 4.095m x 2.738m<br>(max) | 13'5" x 8'11"<br>(max) |

### The Elton - Second Floor

|           |                          |                        |
|-----------|--------------------------|------------------------|
| Bedroom 1 | 4.095m x 2.685m          | 13'5" x 8'9"           |
| Bedroom 4 | 4.095m x 2.738m<br>(max) | 13'5" x 8'11"<br>(max) |

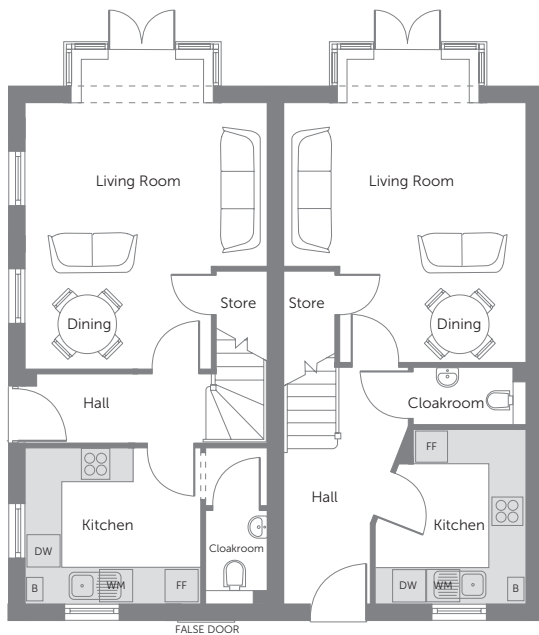


### The Elton Special - First Floor

|           |                          |                        |
|-----------|--------------------------|------------------------|
| Bedroom 2 | 4.095m x 2.640m          | 13'5" x 8'8"           |
| Bedroom 3 | 4.095m x 2.738m<br>(max) | 13'5" x 8'11"<br>(max) |

### The Elton - First Floor

|           |                 |               |
|-----------|-----------------|---------------|
| Bedroom 2 | 4.095m x 2.665m | 13'5" x 8'8"  |
| Bedroom 3 | 4.095m x 2.738m | 13'5" x 8'11" |



### The Elton Special - Ground Floor

|               |                                |                              |
|---------------|--------------------------------|------------------------------|
| Kitchen       | 2.989m x 2.666m                | 9'9" x 8'8"                  |
| Living/Dining | 4.095m x 4.509m<br>(max) (max) | 13'5" x 14'9"<br>(max) (max) |

### The Elton - Ground Floor

|                    |                                |                              |
|--------------------|--------------------------------|------------------------------|
| Kitchen            | 2.564m x 2.952m<br>(max) (max) | 8'4" x 9'8"<br>(max) (max)   |
| Living/Dining Room | 4.095m x 4.392m<br>(max) (max) | 13'5" x 14'4"<br>(max) (max) |

B Boiler    FF Fridge/Freezer Space    WM Washing Machine Space    DW Removable Unit for Dishwasher    W Suggested Wardrobe Position    W Wardrobe    CYL Hot Water Cylinder

Some items shown in this key may be subject to change, and positions could vary from those indicated on this floorplan. Please refer to Sales Advisor for details of your selected plot. Computer generated image shown overleaf. External finishes, landscaping and configuration may vary from plot to plot. Please refer to Sales Advisor for further details. All dimensions are approximate and should not be used for carpet sizes, appliance spaces, or furniture. Furniture not to scale and all positions are indicative. Wardrobes are shown to suggest position only, and are not included as standard unless otherwise stated. We operate a policy of continuous improvement and individual features such as kitchen and bathroom layouts, doors, windows, garages and elevational treatments may vary from time to time. Consequently these particulars should be treated as general guidance only and do not constitute a contract, part of a contract or a warranty. 09/16