

# Picasso Place

STUDIO, ONE AND TWO BEDROOM APARTMENTS

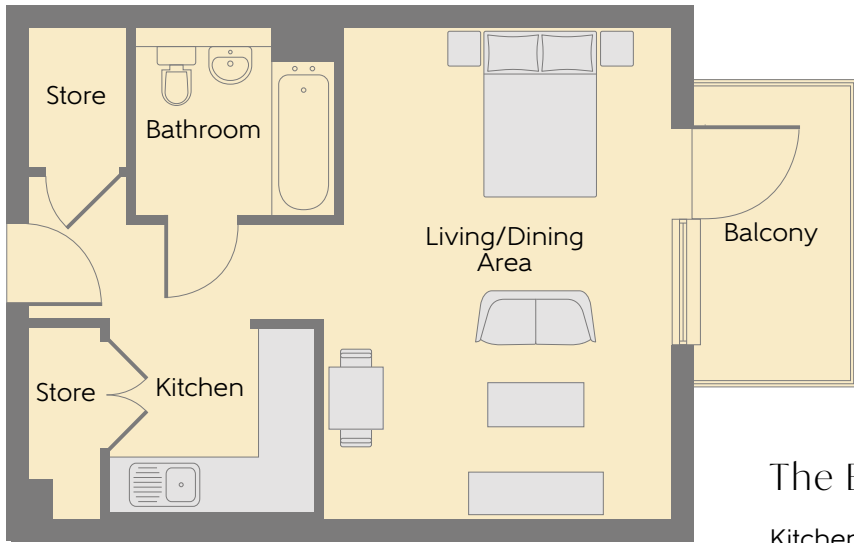


Cooper Square  
A development of new homes in Maidenhead, Berkshire

**Bellway**

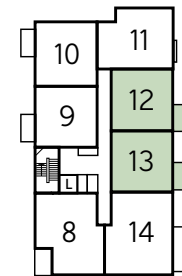






The Breuer - Plot 5

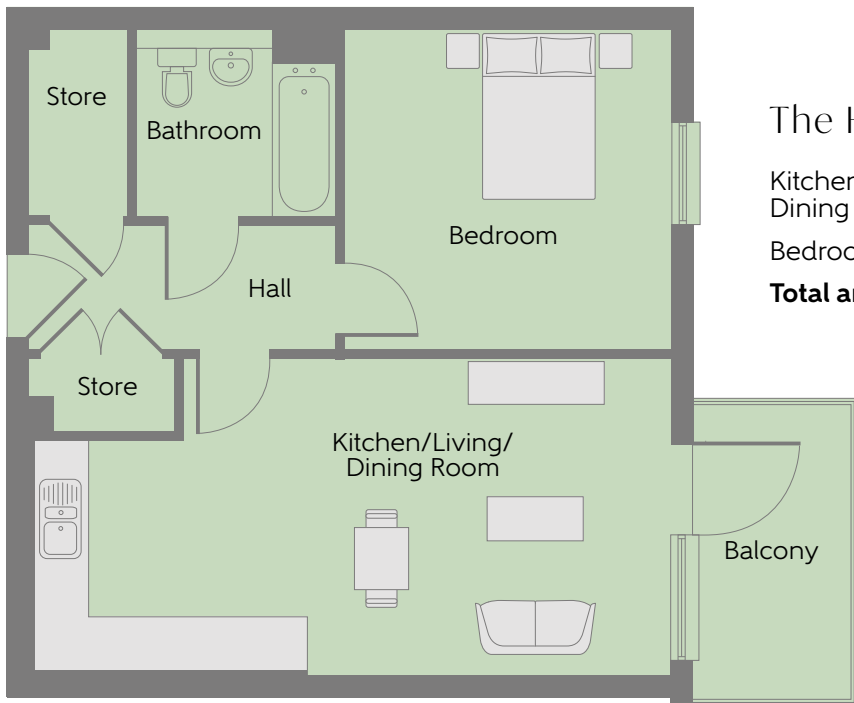
Kitchen	2.25m x 2.02m	7'4" x 6'6"
Living/Dining Area	5.39m x 3.83m	17'7" x 12'6"
<b>Total area</b>	<b>38.2 sq. m.</b>	<b>411 sq. ft..</b>



Second Floor



Fifth Floor

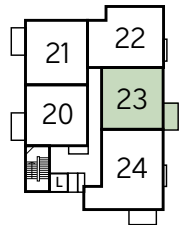


The Hadid A - Plots 6, 12, 13, 18, 23 & 27

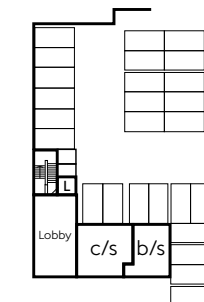
Kitchen/Living/ Dining Room	7.02m x 3.50m	23'0" x 11'5"
Bedroom	3.60m x 3.52m	11'8" x 11'5"
<b>Total area</b>	<b>50.4 sq. m.</b>	<b>543 sq. ft.</b>



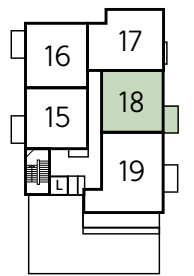
First Floor



Fourth Floor



Ground Floor



Third Floor

c/s - cycle store b/s - bin store L - Lift

**Furniture arrangements are for illustrative purposes only. Items are not included, nor to scale.**

The items shown in this key may be subject to change, and positions could vary from those indicated on this floorplan. Please refer to Sales Advisor for details of your selected plot. External finishes and landscaping may vary. Please refer to Sales Advisor for further details. All dimensions are approximate and should not be used for carpet sizes, appliance spaces or furniture. We operate a policy of continuous improvement and individual features such as kitchen and bathroom layouts, doors, windows, garages and elevational treatments may vary from time to time. Consequently these particulars should be treated as general guidance only and do not constitute a contract, part of a contract or a warranty.

## The Hadid B – Plots 2, 9, 15 & 20

Kitchen/Living/  
Dining Room

7.02m x 3.50m

23'0" x 11'5"

Bedroom

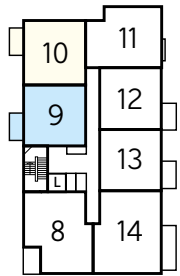
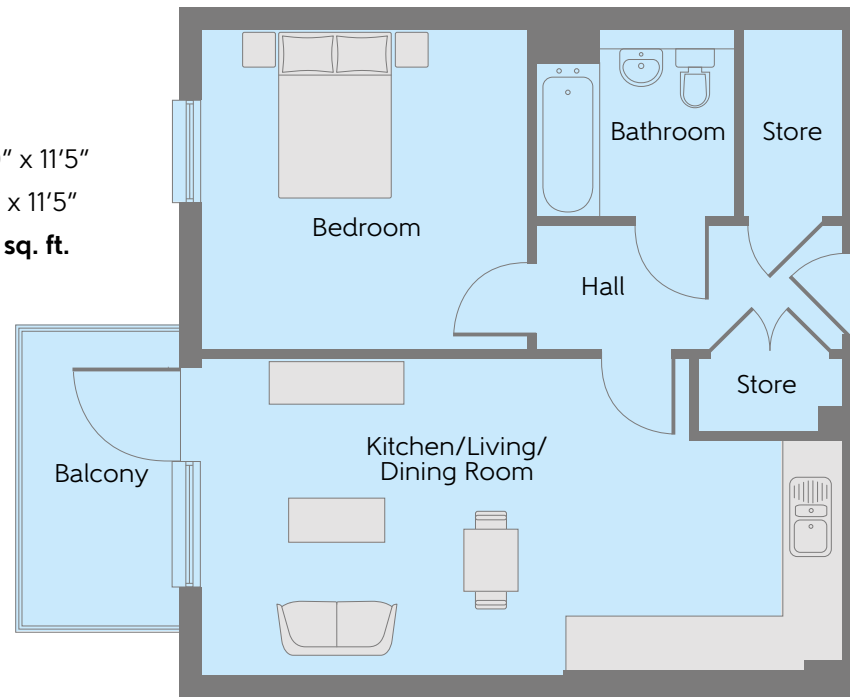
3.60m x 3.52m

11'8" x 11'5"

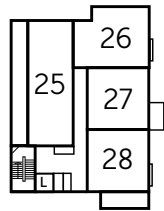
**Total area**

**50.4 sq. m.**

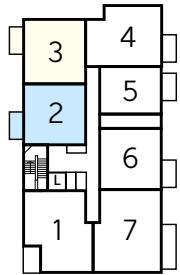
**543 sq. ft.**



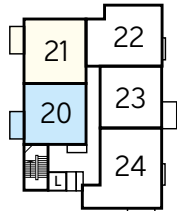
Second Floor



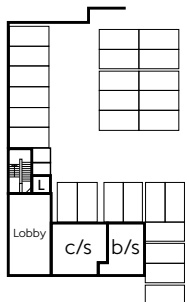
Fifth Floor



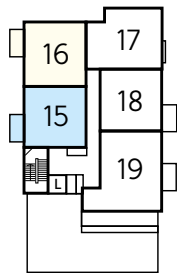
First Floor



Fourth Floor



Ground Floor



Third Floor

c/s - cycle store b/s - bin store L - Lift

## The Mackintosh – Plots 3, 10, 16 & 21

Kitchen/Living/  
Dining Room

7.02m x 3.85m

23'0" x 12'7"

Bedroom

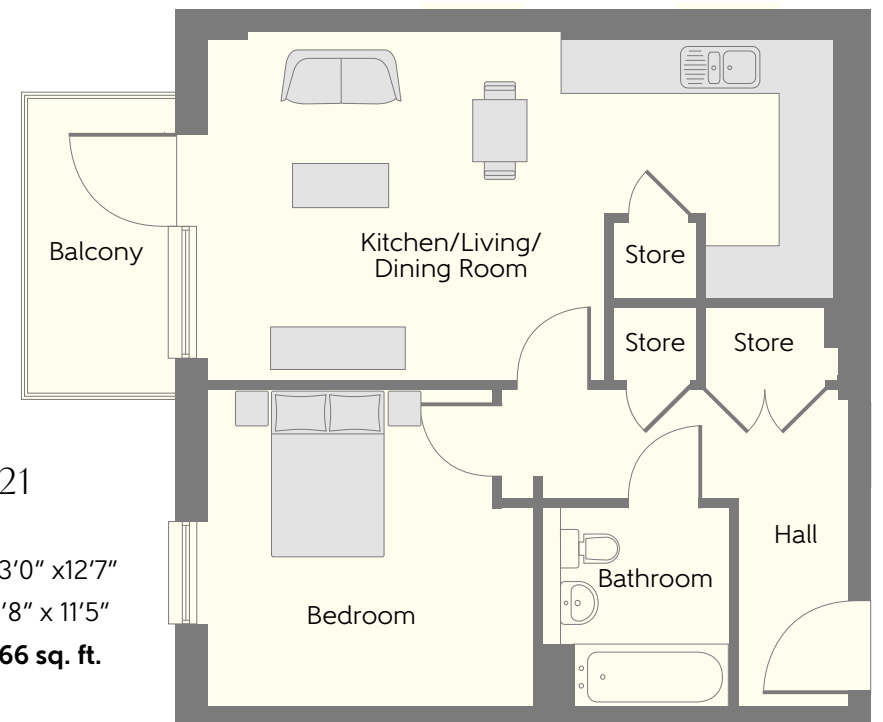
3.60m x 3.52m

11'8" x 11'5"

**Total area**

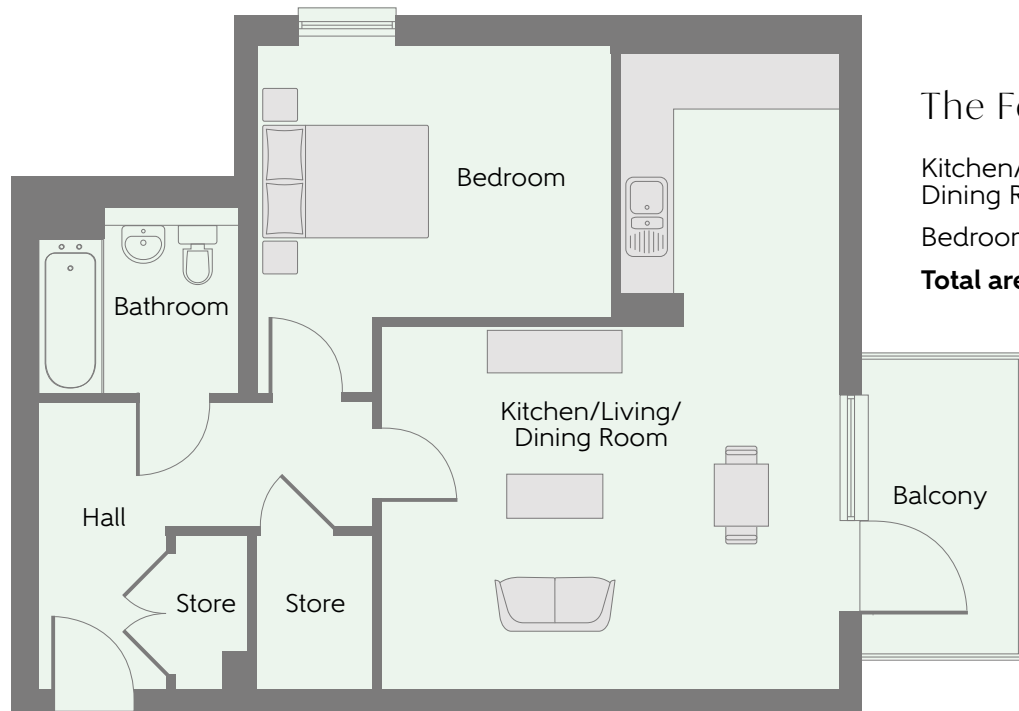
**52.6 sq. m.**

**566 sq. ft.**



**Furniture arrangements are for illustrative purposes only. Items are not included, nor to scale.**

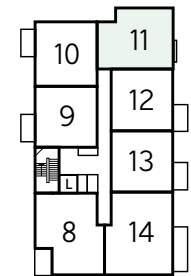
The items shown in this key may be subject to change, and positions could vary from those indicated on this floorplan. Please refer to Sales Advisor for details of your selected plot. External finishes and landscaping may vary. Please refer to Sales Advisor for further details. All dimensions are approximate and should not be used for carpet sizes, appliance spaces or furniture. We operate a policy of continuous improvement and individual features such as kitchen and bathroom layouts, doors, windows, garages and elevational treatments may vary from time to time. Consequently these particulars should be treated as general guidance only and do not constitute a contract, part of a contract or a warranty.



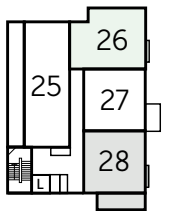
The Foster – Plots 4, 11, 17, 22 & 26

Kitchen/Living/ Dining Room	6.73m x 5.04m	22'9" x 16'5"
Bedroom	3.91m x 3.00m	12'8" x 9'8"
<b>Total area</b>	<b>58.4 sq. m.</b>	<b>628 sq. ft</b>

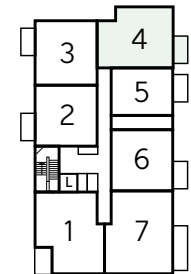
Juliet balcony  
to plots 11, 17,  
22 & 26



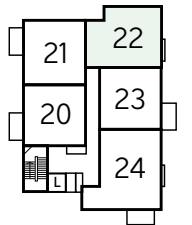
Second Floor



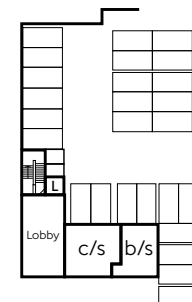
Fifth Floor



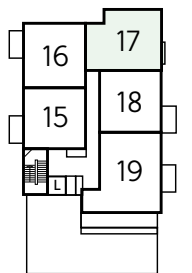
First Floor



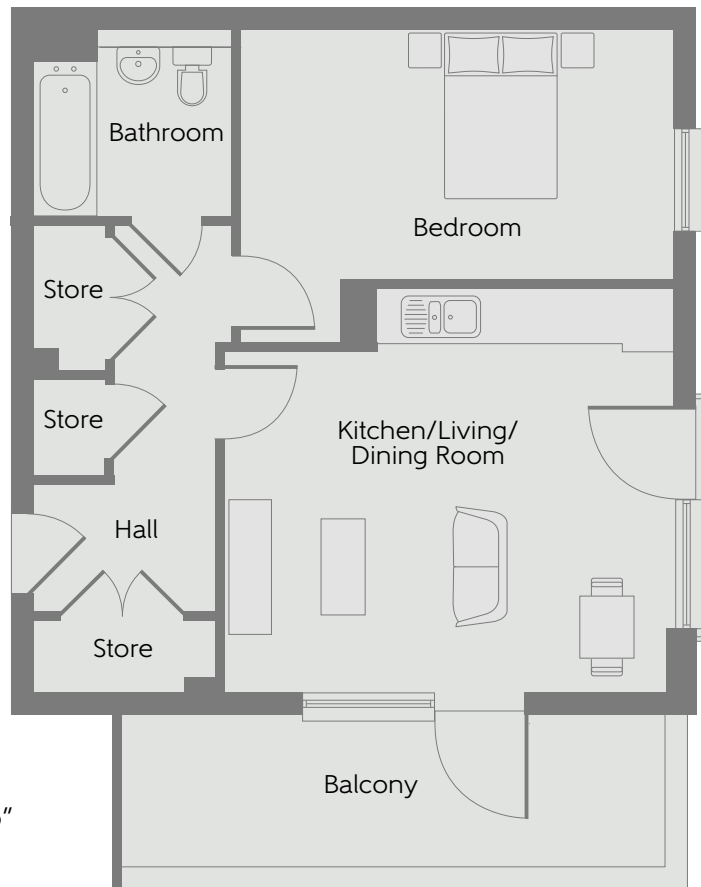
Fourth Floor



Ground Floor



Third Floor



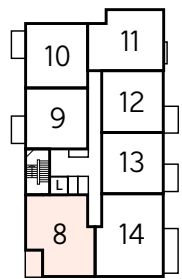
The Rossi – Plot 28

Kitchen/Living/ Dining Room	4.97m x 4.45m	16'3" x 14'6"
Bedroom	4.78m x 2.75m	15'7" x 9'0"
<b>Total area</b>	<b>51.6 sq. m.</b>	<b>555 sq. ft</b>

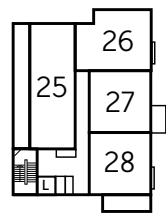
c/s - cycle store b/s - bin store L - Lift

**Furniture arrangements are for illustrative purposes only. Items are not included, nor to scale.**

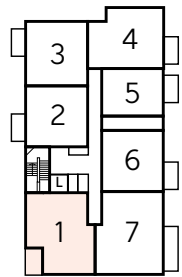
The items shown in this key may be subject to change, and positions could vary from those indicated on this floorplan. Please refer to Sales Advisor for details of your selected plot. External finishes and landscaping may vary. Please refer to Sales Advisor for further details. All dimensions are approximate and should not be used for carpet sizes, appliance spaces or furniture. We operate a policy of continuous improvement and individual features such as kitchen and bathroom layouts, doors, windows, garages and elevational treatments may vary from time to time. Consequently these particulars should be treated as general guidance only and do not constitute a contract, part of a contract or a warranty.



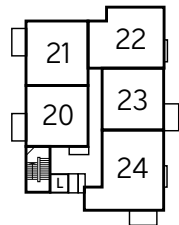
Second Floor



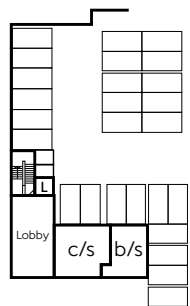
Fifth Floor



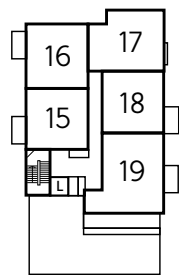
First Floor



Fourth Floor

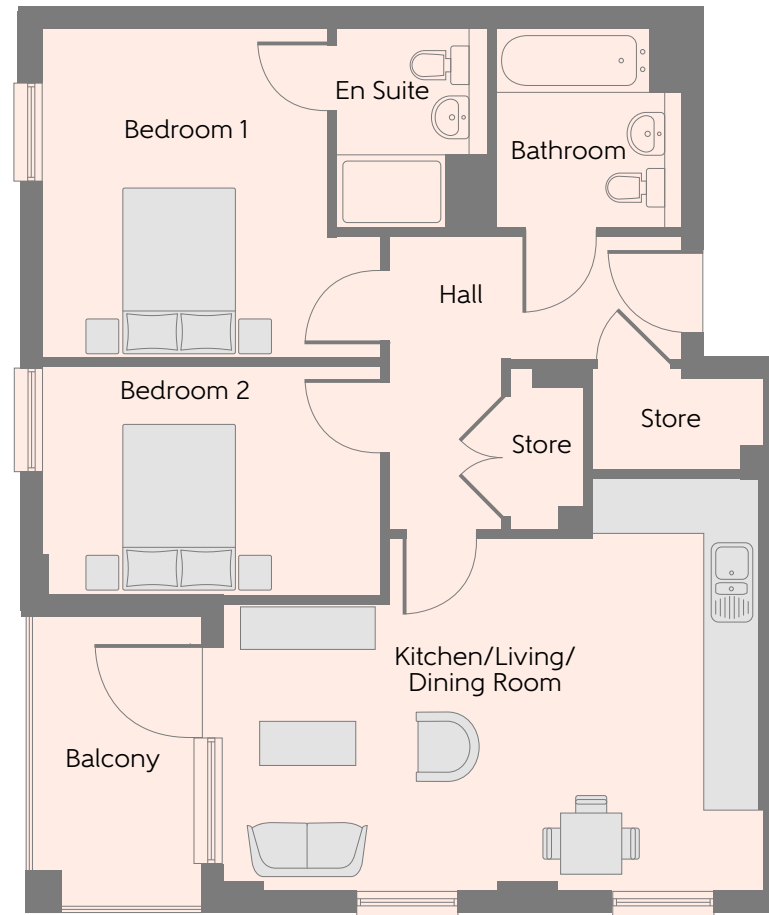


Ground Floor



Third Floor

c/s - cycle store b/s - bin store L - Lift



## The Starck - Plots 1 & 8

Kitchen/Living/ Dining Room	5.97m x 3.87m	19'6" x 12'7"
Bedroom 1	3.62m x 3.18m	11'9" x 10'4"
Bedroom 2	3.76m x 2.52m	12'3" x 8'3"
<b>Total area</b>	<b>65.8 sq. m.</b>	<b>707 sq. ft.</b>

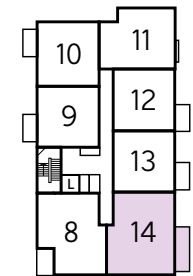
**Furniture arrangements are for illustrative purposes only. Items are not included, nor to scale.**

The items shown in this key may be subject to change, and positions could vary from those indicated on this floorplan. Please refer to Sales Advisor for details of your selected plot. External finishes and landscaping may vary. Please refer to Sales Advisor for further details. All dimensions are approximate and should not be used for carpet sizes, appliance spaces or furniture. We operate a policy of continuous improvement and individual features such as kitchen and bathroom layouts, doors, windows, garages and elevational treatments may vary from time to time. Consequently these particulars should be treated as general guidance only and do not constitute a contract, part of a contract or a warranty.



The Ingels - Plots 7 & 14

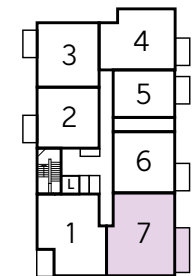
Kitchen/Living/ Dining Room	7.84m x 3.25m	25'6" x 10'7"
Bedroom 1	3.60m x 3.37m	11'8" x 11'1"
Bedroom 2	3.65m x 2.80m	12'0" x 9'2"
<b>Total area</b>	<b>72.5 sq. m.</b>	<b>780 sq. ft.</b>



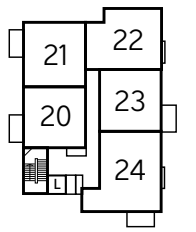
Second Floor



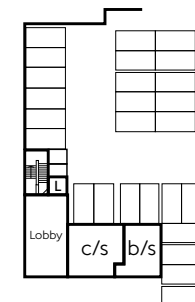
Fifth Floor



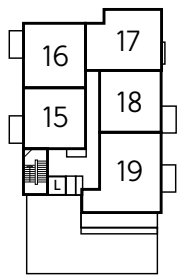
First Floor



Fourth Floor



Ground Floor

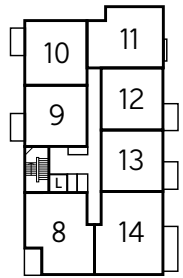


Third Floor

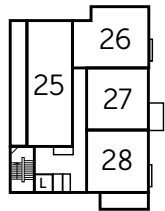
c/s - cycle store b/s - bin store L - Lift

**Furniture arrangements are for illustrative purposes only. Items are not included, nor to scale.**

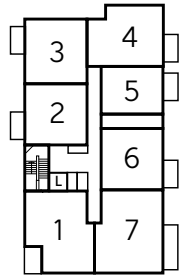
The items shown in this key may be subject to change, and positions could vary from those indicated on this floorplan. Please refer to Sales Advisor for details of your selected plot. External finishes and landscaping may vary. Please refer to Sales Advisor for further details. All dimensions are approximate and should not be used for carpet sizes, appliance spaces or furniture. We operate a policy of continuous improvement and individual features such as kitchen and bathroom layouts, doors, windows, garages and elevational treatments may vary from time to time. Consequently these particulars should be treated as general guidance only and do not constitute a contract, part of a contract or a warranty.



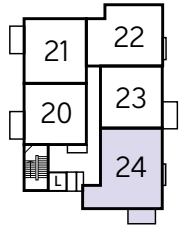
Second Floor



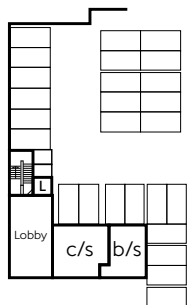
Fifth Floor



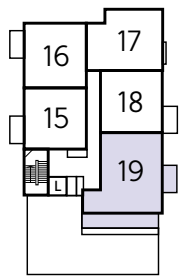
First Floor



Fourth Floor

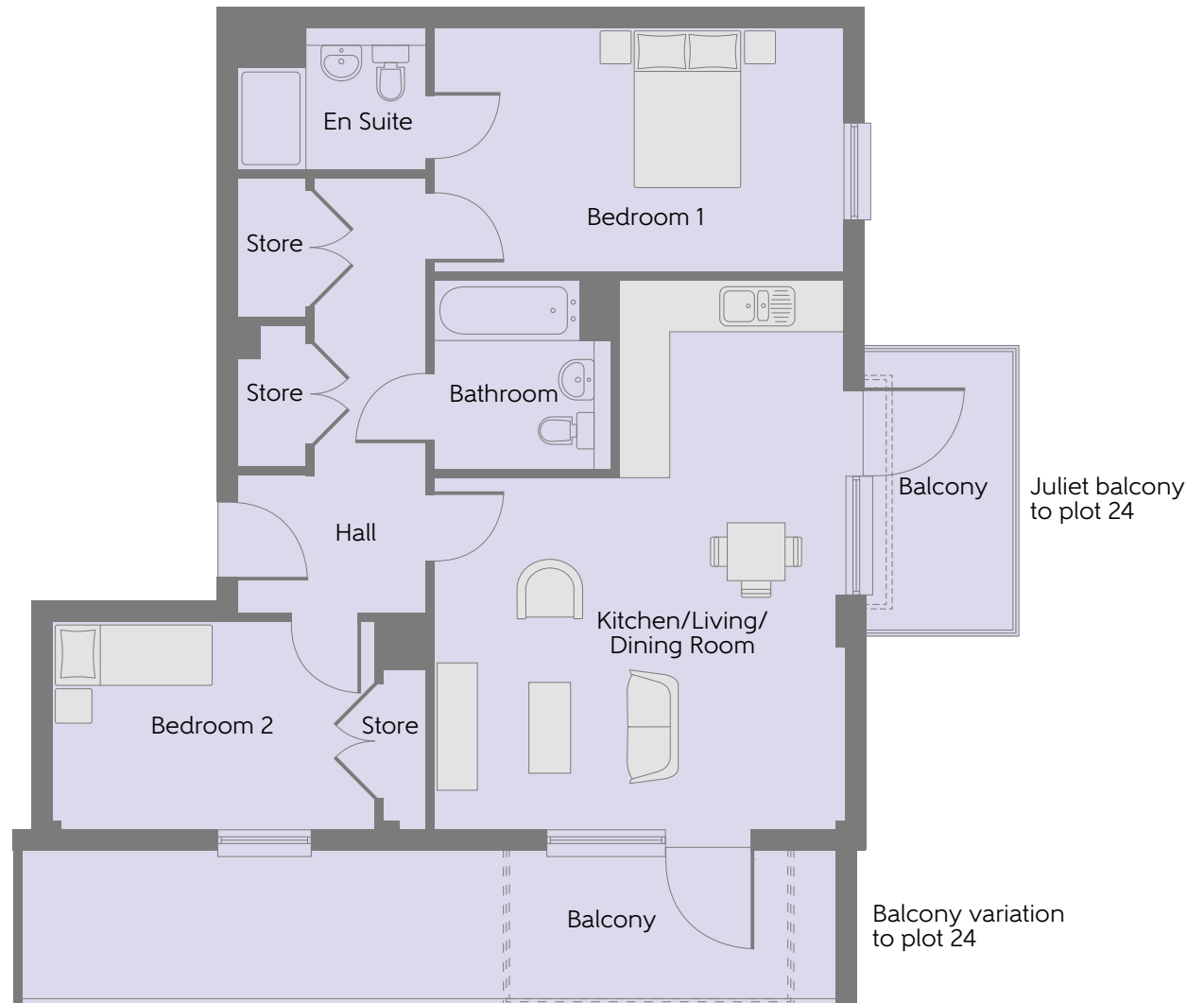


Ground Floor



Third Floor

c/s - cycle store b/s - bin store L - Lift



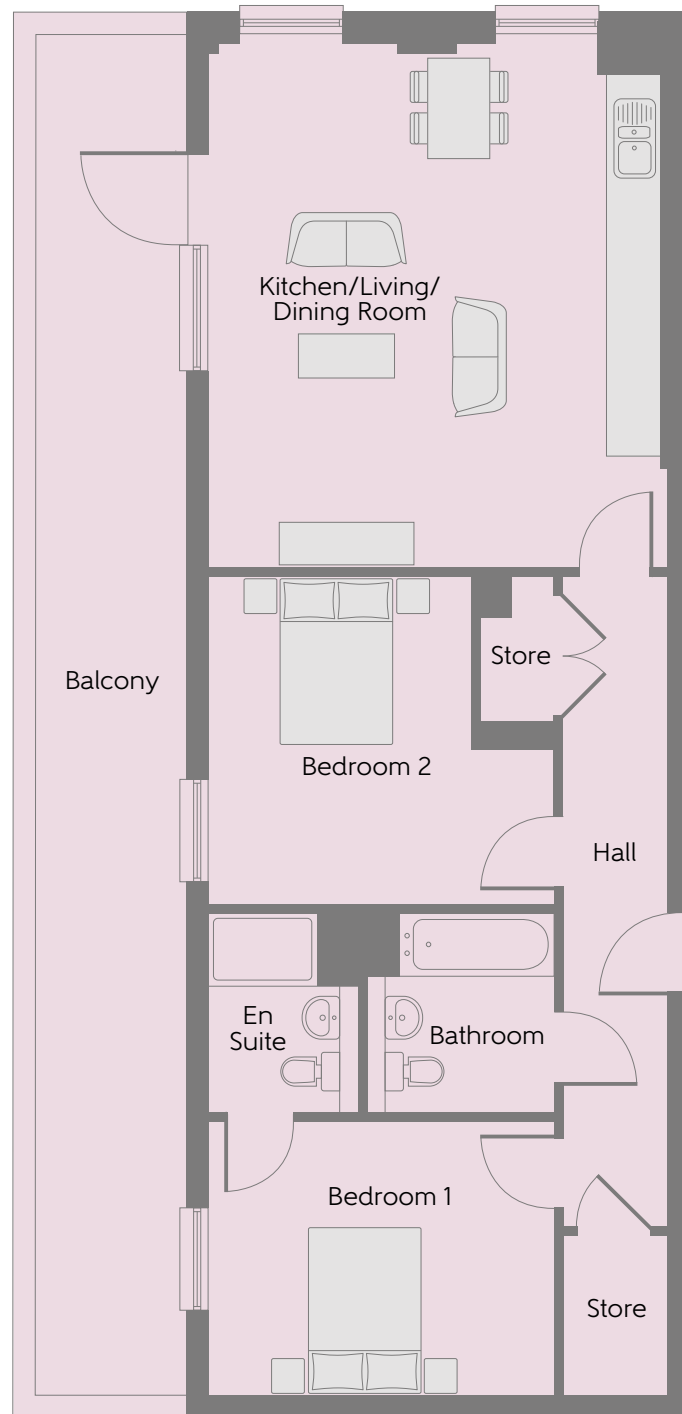
## The Wright - Plots 19 & 24

Kitchen/Living/ Dining Room	6.40m x 4.78m	21'0" x 15'8"
Bedroom 1	4.78m x 2.82m	15'8" x 9'3"
Bedroom 2	3.77m x 2.42m	12'5" x 8'0"
<b>Total area</b>	<b>71.2 sq. m.</b>	<b>766 sq. ft.</b>

**Furniture arrangements are for illustrative purposes only. Items are not included, nor to scale.**

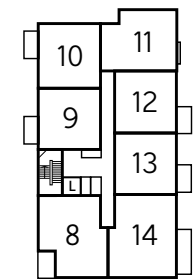
The items shown in this key may be subject to change, and positions could vary from those indicated on this floorplan. Please refer to Sales Advisor for details of your selected plot. External finishes and landscaping may vary. Please refer to Sales Advisor for further details. All dimensions are approximate and should not be used for carpet sizes, appliance spaces or furniture. We operate a policy of continuous improvement and individual features such as kitchen and bathroom layouts, doors, windows, garages and elevational treatments may vary from time to time. Consequently these particulars should be treated as general guidance only and do not constitute a contract, part of a contract or a warranty.



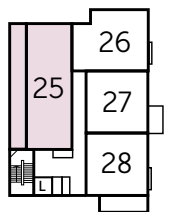


The Llewellyn - Plot 25

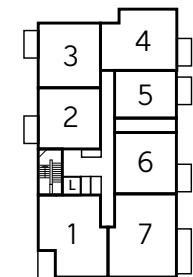
Kitchen/Living/ Dining Room	5.77m x 5.06m	19'0" x 16'6"
Bedroom 1	3.80m x 3.02m	12'5" x 9'9"
Bedroom 2	3.80m x 3.60m	12'5" x 11'8"
<b>Total area</b>	<b>75.2 sq. m.</b>	<b>809 sq. ft.</b>



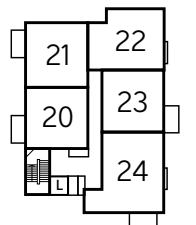
Second Floor



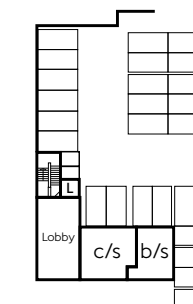
Fifth Floor



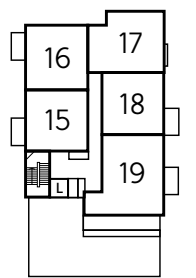
First Floor



Fourth Floor



Ground Floor



Third Floor

c/s - cycle store b/s - bin store L - Lift

**Furniture arrangements are for illustrative purposes only. Items are not included, nor to scale.**

The items shown in this key may be subject to change, and positions could vary from those indicated on this floorplan. Please refer to Sales Advisor for details of your selected plot. External finishes and landscaping may vary. Please refer to Sales Advisor for further details. All dimensions are approximate and should not be used for carpet sizes, appliance spaces or furniture. We operate a policy of continuous improvement and individual features such as kitchen and bathroom layouts, doors, windows, garages and elevational treatments may vary from time to time. Consequently these particulars should be treated as general guidance only and do not constitute a contract, part of a contract or a warranty.

# Specification

## FINISHES

		1 & 2 Bedroom Apartments	3 Bedroom Apartments
Ceilings	Crown White Matt Emulsion	•	•
Walls	Crown White Matt Emulsion	•	•
Window Cills	White Gloss MDF	•	•
Skirting	White Satinwood MDF Single Grooved 94 x 14.5mm	•	•
Architrave	White Satinwood MDF Single Grooved 69 x 18mm	•	•
Entrance Doors	Apartment - White Satinwood inner & Grey (RAL 7047) (Fire Rated Solid Core)	•	•
Internal Doors	White Satinwood Vertical 5 Panel Door (Check Fire Rating)	•	•
Ironmongery	SAA Door Furniture	•	•

## KITCHEN

Appliance Extractor	System 3 - MEV Ceiling Mounted Fan inc Humidistat	•	•
Carcass	Premium Grade 18 colour matched carcass.	•	•
Frontals	Bellway Group "Band B" Choice	•	•
Units	Frontal Matching Table Ends	•	•
Worktops	40mm Square Edge worktops with upstands	•	•
Splashback	S/S Over Hob 600mm wide from worktop to underside of extractor Hood	•	•
Kitchens Sink	Linear (EL9502/TAF3CM) 1 bowl S/S sink with waste kit & Chrome tap	•	•
Appliances Oven	Under counter Oven (ZHC 60156X)	•	•
Appliances Hob	4 Burner Electric Hob	•	•
Dishwasher	Dishwasher included	•	•
Extract Hood	Integrated Chimney Hood (ZHC 60156X)	•	•
Appliance Fridge Freezer	Fridge Freezer included	•	•
Appliance Washing Machine	Washing machine included	•	•

## WETROOMS

Bathroom - WC	Roca DEBBA (A347996000) Back to wall Concealed Cistern Duplo WC L 820 4.5l Flush	•	•
Bathroom - Basin	Roca Debba 500 x 420 basin, one tap hole - Semi pedestal	•	•
Bathroom - Bath	Roca Debba Malaga 1700 x 700 2TH	•	•
Bathroom - Brassware	Bristan Chrome (BWY PS BAS C) Pisa Basin Kixwer with Clicker Waste	•	•

## MECHANICAL

Boiler	Electric Boiler	•	•
Controls	Myson Touch 2 Wifi Thermostat	•	•
Radiators	Underfloor heating circuits	•	•
Heated Towel Rails	Electric Only - 1200mm x 600mm (Bathrooms) & 1200mm x 500mm (En Suites)	•	•
Ventilation	Window Trickle Ventilators with Mechanical Extract Fans (system 3) CMEV	•	•

## ELECTRICS

Safety - Fire	Detra white (1163) Mains Connected Smoke alarms	•	•
Safety - Heat	Detra White (1165) Heat Detector - Kitchen	•	•
Consumer Units	Electrium white (NUMB10HIFWNR/NMB15HIFWNR)	•	•
Sockets & Switches	Electrium VOLEX or DETA White fittings	•	•
Shaver Point	En suites & Bathroom	•	•
Lighting	Electrium (D6677NR) Pendant Fitting to Habitable Rooms	•	•
Lighting - Kitchen	Downlighters Electrium Appleby (D1065WHNR-W)	•	•
Lighting Bathroom & En Suites	Downlighters Electrium Appleby (D1065WHNR-W)	•	•
Media	Electrium - 1x Satellite, 2x Aerial, 1x BT, 1x DAB, 2x Double Sockets & 1x CAT5 E**	•	•
Communications - TV	TV Point to Lounge & Bed 1	•	•
Communications - Voice	Telephone Point to Lounge/Diner	•	•
Communications - Data	CAT 5 Network Point to Lounge	•	•
Communications - Access	Audio Entry System	•	•
Broadband	Ultrafast Fibre Connectivity Openreach	•	•

## EXTERNALS

Shared Parking Areas	Bitmac Black *	•	•
Balcony	Balcony **	•	•

# Make your new home as individual as you are with Additions



Every Bellway home comes with high quality fittings as standard, but to add that personal touch you can also choose to upgrade from our range of options to make sure your new home feels distinctly different.

Most important of all, because we recognise that you want your new home to reflect your personal taste from day one, we will make sure that all your Additions choices are expertly fitted and finished by the time you move in.

## Choose from our range of Additions options covering:

### Kitchens

- Upgraded integrated or freestanding washer/dryer
- Upgraded integrated fridge/freezer
- Upgraded integrated or freestanding dishwasher
- Upgraded integrated or freestanding washing machine
- Upgrade to composite worktops
- Double oven
- Upgrade hob

### Flooring

- Selection of carpets, Vinyl or laminate

### Tiling

- Full and half height tiling
- Comprehensive upgrade options

### Electrical

- Additional sockets
- Additional switches
- Chrome sockets
- Chrome switches
- Under-unit lighting
- Recessed lighting
- BT and TV points

### Miscellaneous

- Wardrobes

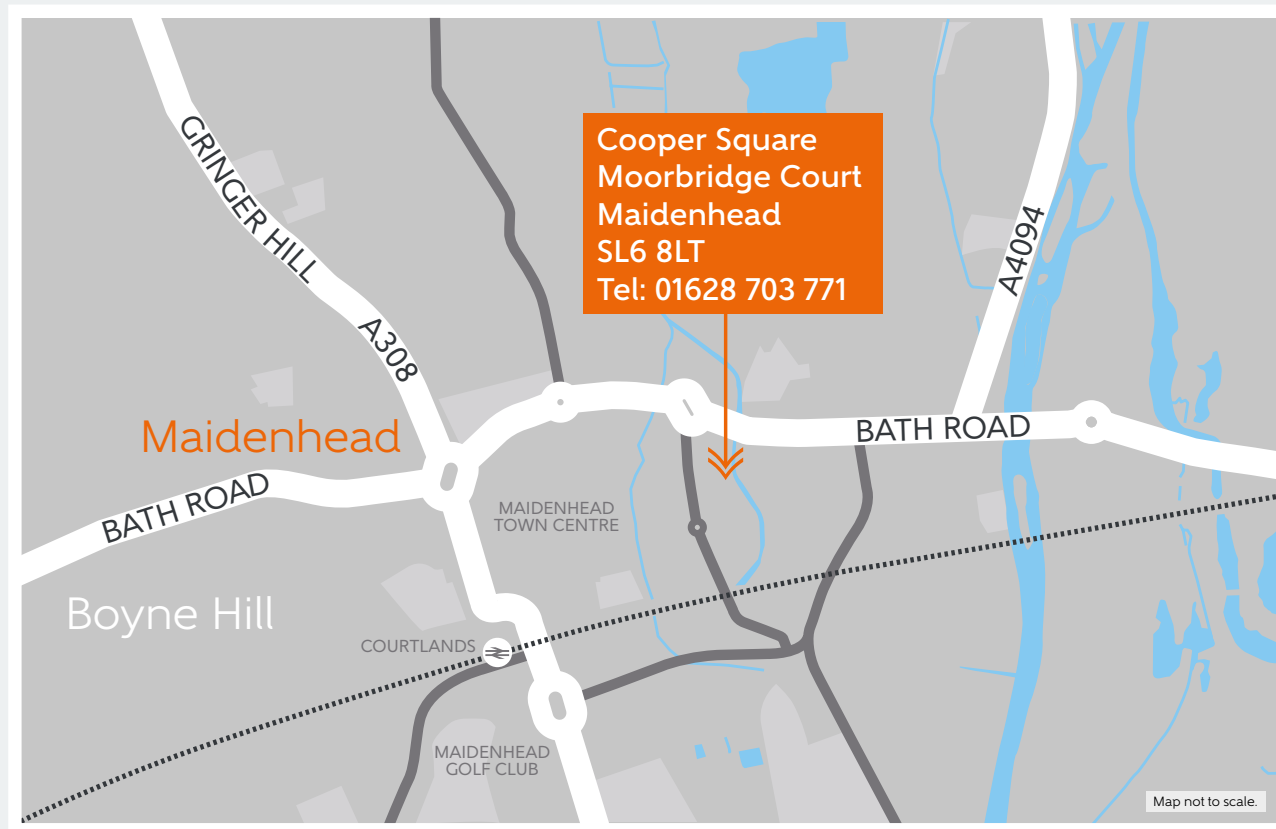


Although we make every effort to ensure that as many Additions choices as possible are available to you, not every development offers all the range shown. Please be aware that orders can only be accepted up to certain stages of the construction process. Therefore we recommend that you consult our Sales Advisor.



# How to find us

---



Bellway Homes Limited (Thames Valley Division)  
Pacific House, Imperial Way, Reading, Berkshire RG2 0TD  
Telephone: 0118 933 8021 [bellway.co.uk](http://bellway.co.uk)

**Bellway**