



THE

RUTHERFORD APARTMENTS

ONE & TWO BEDROOM HOMES
PLOTS 105, 106, 107, 108, 109, 110, 111, 112, 113,
114, 115, 116, 117, 118, 119, 120, 121, 122, 123,
124, 125, 126, 127, 128 & 129



Computer generated image.

Brought to you by

Bellway



LATIMER
by Clarion Housing Group

FIRST FLOOR

ONE & TWO BEDROOM HOMES
PLOTS 109, 110, 111, 112, 113, 114, 115, 116, 117, 118,
119, 120, 121, 124 & 125

PLOTS 109 & 110 THE DOWNING

Kitchen/Living/ Dining Room	8.080m x 3.450m	26'6" x 11'4"
Bedroom	4.380m x 2.875m	14'4" x 9'5"
Total Area	50.8 sq.m.	547 sq.ft.

PLOTS 111, 112, 113, 114, 115, 116, 117, 118, 119, 120 & 121 THE GONVILLE

Kitchen/Living/ Dining Room	8.080m x 4.988m	26'6" x 16'4"
Bedroom 1	4.988m x 2.756m	16'4" x 9'1"
Bedroom 2	5.298m x 2.925m	17'5" x 9'7"
Total Area	79.2 sq.m.	853 sq.ft.

PLOT 124 THE PEMBROKE

Kitchen/Living/ Dining Room	6.165m x 4.856m	20'3" x 15'11"
Bedroom	3.600m x 3.277m	11'10" x 10'9"
Total Area	50.6 sq.m.	545 sq.ft.

PLOT 125 THE HOMERTON

Kitchen/Living/ Dining Room	5.750m x 4.850m	18'10" x 15'11"
Bedroom	4.740m x 2.756m	15'7" x 9'1"
Total Area	50.7 sq.m.	546 sq.ft.

PLOT 109
THE
DOWNING

PLOT 110
THE
DOWNING

PLOT 124
THE
PEMBROKE

PLOT 125
THE
HOMERTON

PLOT 111
THE GONVILLE
(LOWER FLOOR)

PLOT 112
THE GONVILLE
(LOWER FLOOR)

PLOT 113
THE GONVILLE
(LOWER FLOOR)

PLOT 114
THE GONVILLE
(LOWER FLOOR)

PLOT 120
THE GONVILLE
(LOWER FLOOR)

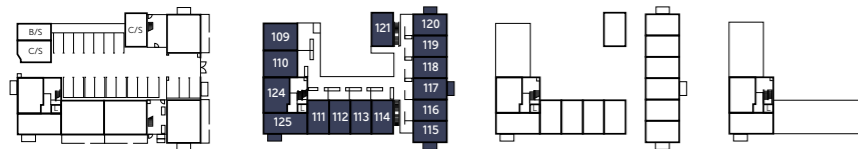
PLOT 119
THE GONVILLE
(LOWER FLOOR)

PLOT 118
THE GONVILLE
(LOWER FLOOR)

PLOT 117
THE GONVILLE
(LOWER FLOOR)

PLOT 116
THE GONVILLE
(LOWER FLOOR)

PLOT 115
THE GONVILLE
(LOWER FLOOR)



GROUND FLOOR FIRST FLOOR SECOND FLOOR THIRD FLOOR

L - Lift CS - Cycle Store BS - Bin Store

Key 1 Bedroom 2 Bedroom

Clks - Cloakroom CYL - Hot water Cylinder WS - Wardrobe Space (suggestion only, wardrobe not included)

Furniture arrangements are for illustrative purposes only. Items are not included, nor to scale.

The items shown in this key may be subject to change, and positions could vary from those indicated on this floorplan. Please refer to Sales Advisor for details of your selected plot. Computer generated image shown overleaf. External finishes, landscaping and configuration may vary from plot to plot. Please refer to Sales Advisor for further details. All dimensions are approximate and should not be used for carpet sizes, appliance spaces or furniture. We operate a policy of continuous improvement and individual features such as kitchen and bathroom layouts, doors, windows, garages and elevational treatments may vary from time to time. Consequently these particulars should be treated as general guidance only and do not constitute a contract, part of a contract or a warranty.

Brought to you by

Bellway

LATIMER
by Clarion Housing Group

SECOND FLOOR

ONE & TWO BEDROOM HOMES
PLOTS 111, 112, 113, 114, 115, 116, 117, 118, 119,
120, 121, 126 & 127

PLOTS 111, 112, 113, 114, 115, 116, 117, 118, 119, 120 & 121 THE GONVILLE

Kitchen/Living/ Dining Room	8.080m x 4.988m	26'6" x 16'4"
Bedroom 1	4.988m x 2.756m	16'4" x 9'1"
Bedroom 2	5.298m x 2.925m	17'5" x 9'7"
Total Area	79.2 sq.m.	853 sq.ft.

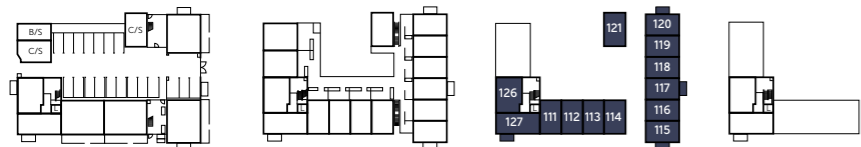
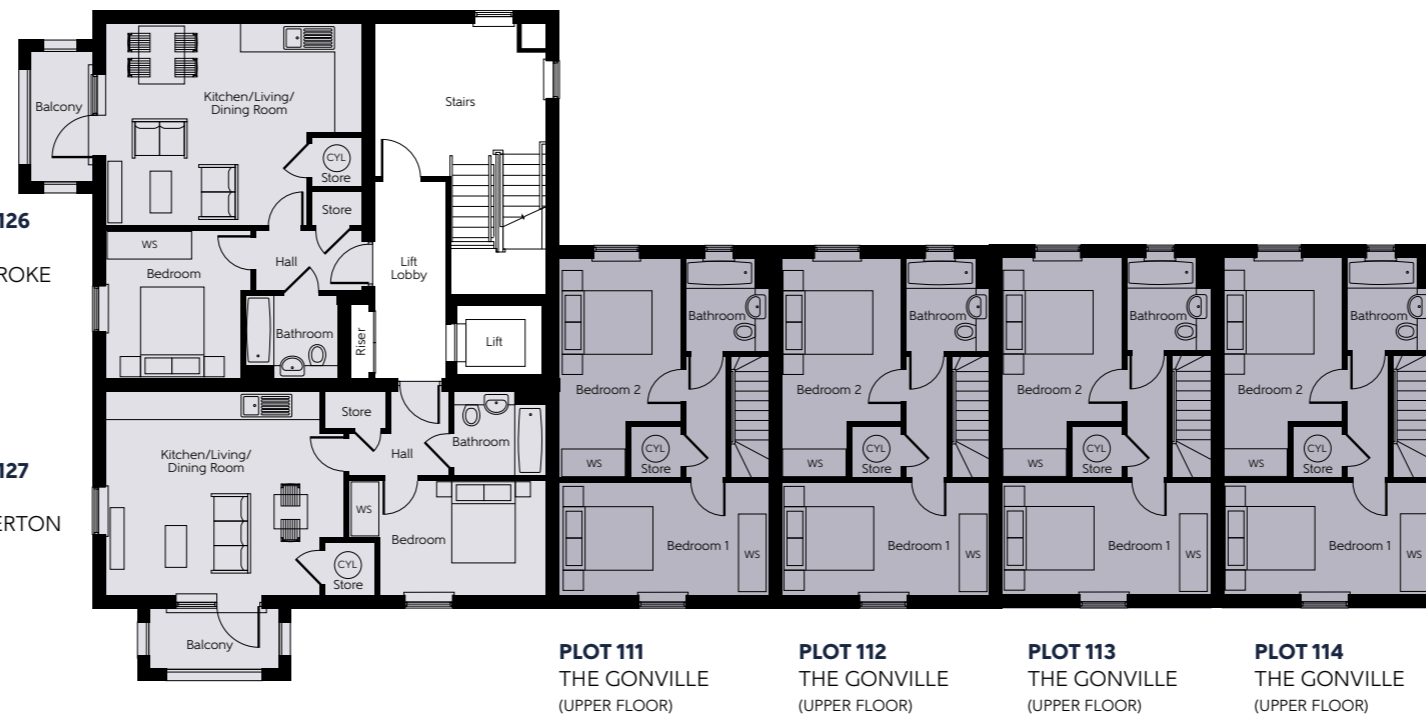
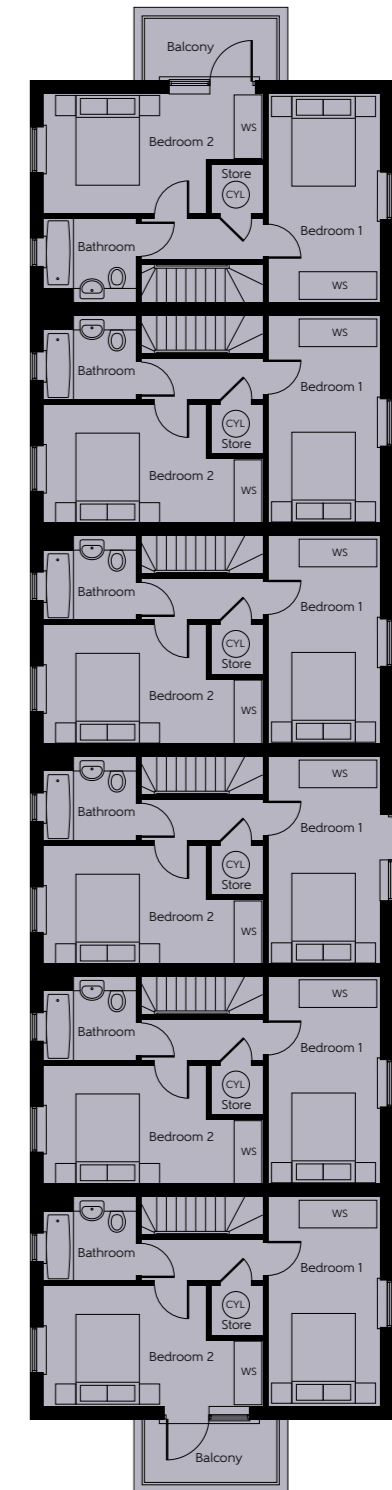
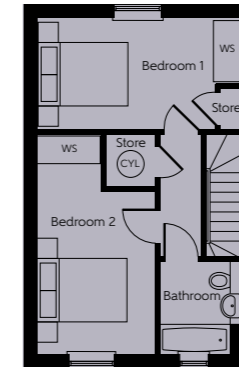
PLOT 126 THE PEMBROKE

Kitchen/Living/ Dining Room	6.165m x 4.856m	20'3" x 15'11"
Bedroom	3.600m x 3.277m	11'10" x 10'9"
Total Area	50.6 sq.m.	545 sq.ft.

PLOT 127 THE HOMERTON

Kitchen/Living/ Dining Room	5.750m x 4.850m	18'10" x 15'11"
Bedroom	4.740m x 2.756m	15'7" x 9'1"
Total Area	50.7 sq.m.	546 sq.ft.

PLOT 121 THE GONVILLE (UPPER FLOOR)



GROUND FLOOR FIRST FLOOR SECOND FLOOR THIRD FLOOR

L - Lift CS - Cycle Store BS - Bin Store

Key ■ 1 Bedroom ■ 2 Bedroom

Clks - Cloakroom CYL - Hot water Cylinder WS - Wardrobe Space (suggestion only, wardrobe not included)

Furniture arrangements are for illustrative purposes only. Items are not included, nor to scale.

The items shown in this key may be subject to change, and positions could vary from those indicated on this floorplan. Please refer to Sales Advisor for details of your selected plot. Computer generated image shown overleaf. External finishes, landscaping and configuration may vary from plot to plot. Please refer to Sales Advisor for further details. All dimensions are approximate and should not be used for carpet sizes, appliance spaces or furniture. We operate a policy of continuous improvement and individual features such as kitchen and bathroom layouts, doors, windows, garages and elevational treatments may vary from time to time. Consequently these particulars should be treated as general guidance only and do not constitute a contract, part of a contract or a warranty.

Brought to you by

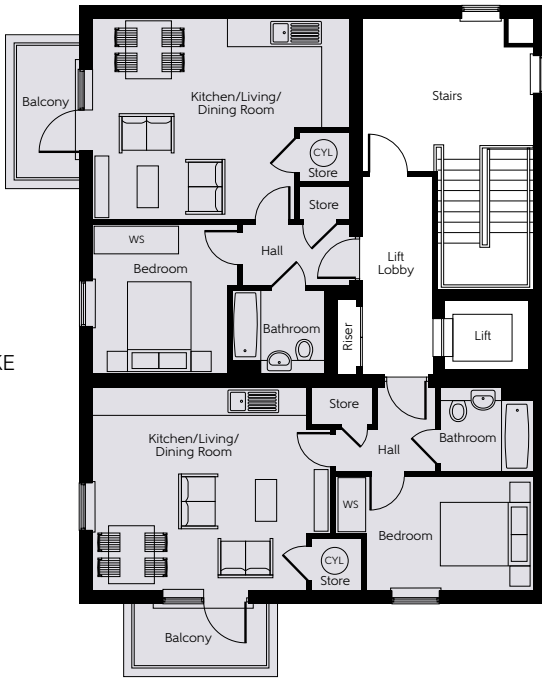




THIRD FLOOR

ONE BEDROOM HOMES
PLOTS 128 & 129

PLOT 128
THE
PEMBROKE



PLOT 128 THE PEMBROKE

Kitchen/Living/ Dining Room	6.165m x 4.856m	20'3" x 15'11"
Bedroom	3.600m x 3.277m	11'10" x 10'9"
Total Area	50.6 sq.m.	545 sq.ft.

PLOT 129 THE HOMERTON

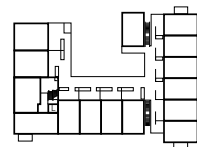
Kitchen/Living/ Dining Room	5.750m x 4.850m	18'10" x 15'11"
Bedroom	4.740m x 2.756m	15'7" x 9'1"
Total Area	50.7 sq.m.	546 sq.ft.

PLOT 129
THE HOMERTON

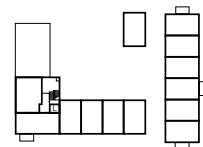
Key ■ 1 Bedroom ■ 2 Bedroom



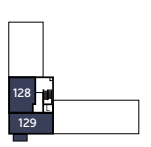
GROUND FLOOR



FIRST FLOOR



SECOND FLOOR



THIRD FLOOR

L - Lift CS - Cycle Store BS - Bin Store

Cks - Cloakroom (CYL) - Hot water Cylinder WS - Wardrobe Space (suggestion only, wardrobe not included)

Furniture arrangements are for illustrative purposes only. Items are not included, nor to scale.

The items shown in this key may be subject to change, and positions could vary from those indicated on this floorplan. Please refer to Sales Advisor for details of your selected plot. Computer generated image shown overleaf. External finishes, landscaping and configuration may vary from plot to plot. Please refer to Sales Advisor for further details. All dimensions are approximate and should not be used for carpet sizes, appliance spaces or furniture. We operate a policy of continuous improvement and individual features such as kitchen and bathroom layouts, doors, windows, garages and elevational treatments may vary from time to time. Consequently these particulars should be treated as general guidance only and do not constitute a contract, part of a contract or a warranty.