

ASHLAR  
VILLAGE  
GLASGOW

# The Hanbury

THREE BEDROOM HOME

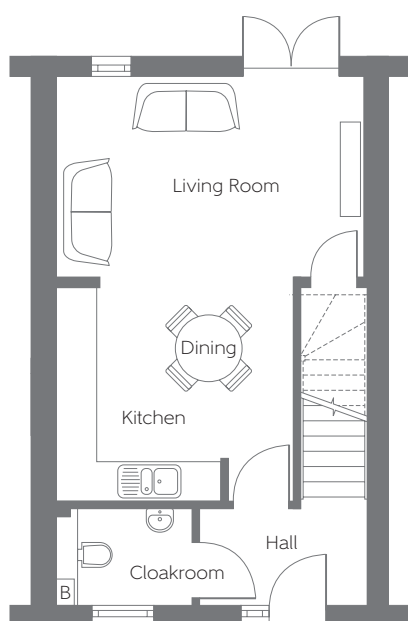


[bellway.co.uk](https://www.bellway.co.uk)

This is a levelled site. Please refer to the Sales Advisor for details of your chosen plot.

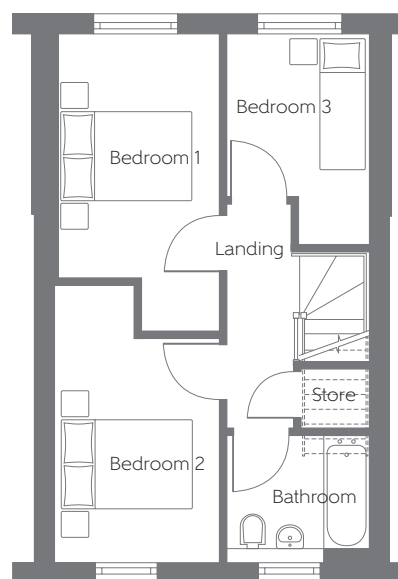
Please note Photo Voltaic (solar) panels shown above are indicative only. The location and number of panels are dependent on plot orientation. Please see Sales Advisor for details.

**Bellway**



Ground Floor

Kitchen/Dining Area 3.560m x 3.121m 11'8" x 10'3"  
 Living Room 4.600m x 3.086m 15'1" x 10'2"



First Floor

Bedroom 1 4.464m x 2.416m 14'8" x 7'11"  
 (max) (max) (max) (max)  
 Bedroom 2 4.151m x 2.466m 13'7" x 8'1"  
 (max) (max) (max) (max)  
 Bedroom 3 3.151m x 2.134m 10'4" x 7'0"  
 (max) (max) (max) (max)

[B] - Boiler - - - - - Reduced Head Height

**Furniture arrangements are for illustrative purposes only. Items are not included, nor to scale.**

The items shown in this key may be subject to change, and positions could vary from those indicated on this floorplan. Please refer to Sales Advisor for details of your selected plot. Computer generated image shown overleaf. External finishes, landscaping and configuration may vary from plot to plot. Please refer to Sales Advisor for further details. All dimensions are approximate and should not be used for carpet sizes, appliance spaces or furniture. We operate a policy of continuous improvement and individual features such as kitchen and bathroom layouts, doors, windows, garages and elevational treatments may vary from time to time. Consequently these particulars should be treated as general guidance only and do not constitute a contract, part of a contract or a warranty.