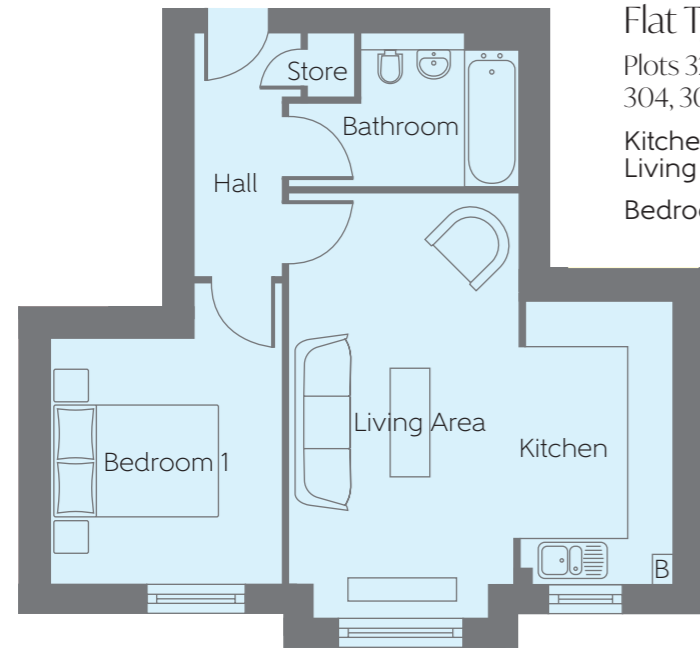


ASHLAR
VILLAGE
GLASGOW

Apartment Blocks 1, 4, 6 & 9

ONE AND TWO BEDROOM APARTMENTS





Flat Type A

Plots 32, 36, 40, 44, 89, 93, 97, 101, 251, 255, 259, 263, 304, 308, 312 & 316

Kitchen/ Living Area	5.604m x 5.070m	18'5" x 16'8"
Bedroom 1	3.973m x 3.065m (max)	13'0" x 10'1" (max)



Flat Type C

Plots 34, 38, 42, 46, 91, 95, 99, 103, 253, 257, 261, 265, 306, 310, 314 & 318

Kitchen/ Living Area	6.352m x 4.638m (max)	20'10" x 15'3" (max)
Bedroom 1	3.522m x 3.022m	11'7" x 9'11"
Bedroom 2	3.022m x 2.735m (max)	9'11" x 9'0" (max)

Flat Type B

Plots 35, 39, 43, 47, 92, 96, 100, 104, 254, 258, 262, 266, 307, 311, 315 & 319

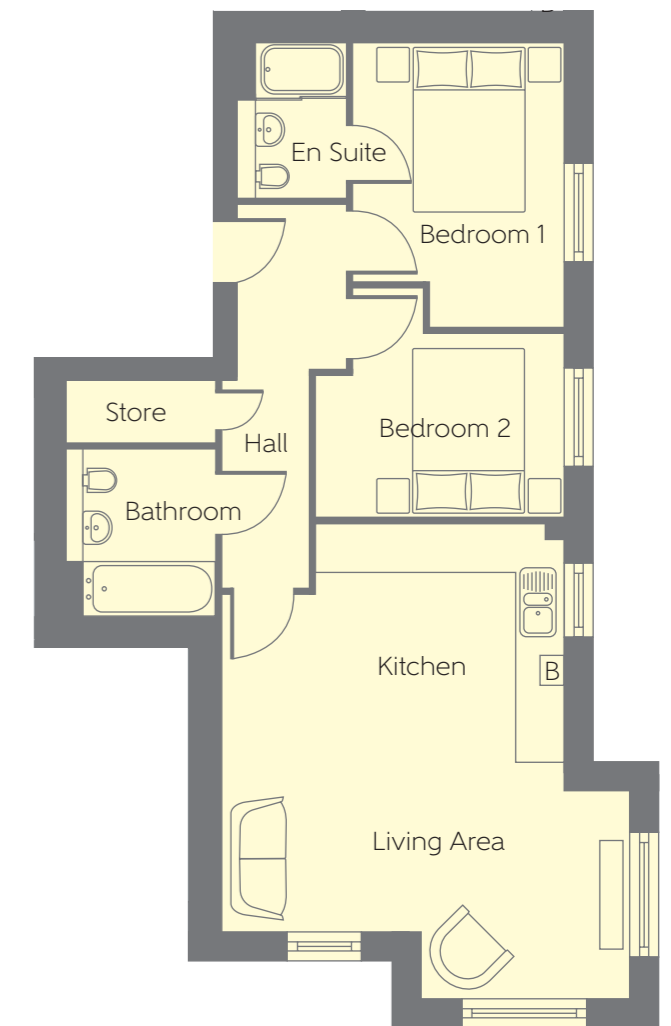
Living Room	5.865m x 3.190m (max)	19'3" x 10'6" (max)
Kitchen	3.308m x 2.124m	10'10" x 7'0"
Bedroom 1	4.099m x 2.874m (max)	13'5" x 9'5" (max)
Bedroom 2	3.340m x 3.190m (max)	10'11" x 10'6" (max)



Flat Type D

Plots 33, 37, 41, 45, 90, 94, 98, 102, 252, 256, 260, 264, 305, 309, 313 & 317

Kitchen/ Living Room	5.385m x 5.372m (max) (max)	17'8" x 17'8" (max) (max)
Bedroom 1	3.747m x 2.750m (max) (max)	12'4" x 9'0" (max) (max)
Bedroom 2	3.239m x 3.022m (max) (max)	10'7" x 9'11" (max) (max)



[B] - Boiler

Furniture arrangements are for illustrative purposes only. Items are not included, nor to scale.

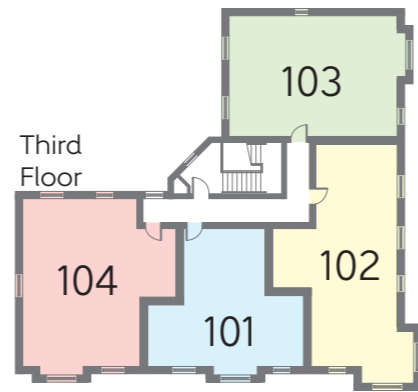
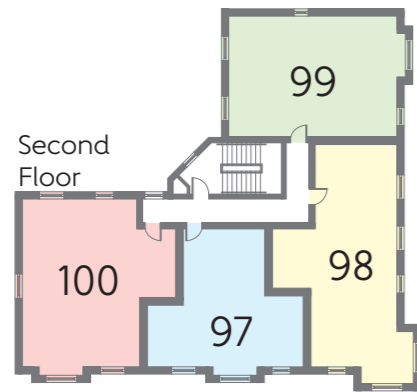
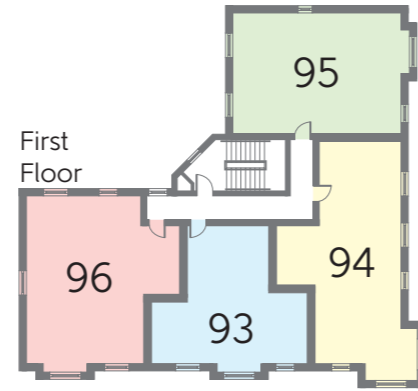
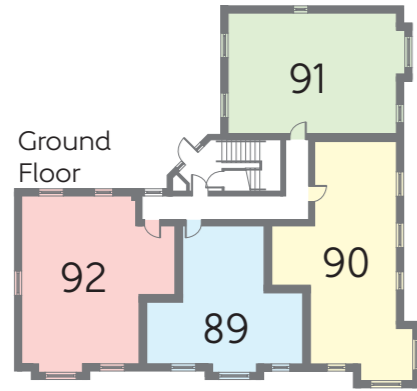
The items shown in this key may be subject to change, and positions could vary from those indicated on this floorplan. Please refer to Sales Advisor for details of your selected plot. Computer generated image shown overleaf. External finishes, landscaping and configuration may vary from plot to plot. Please refer to Sales Advisor for further details. All dimensions are approximate and should not be used for carpet sizes, appliance spaces or furniture. We operate a policy of continuous improvement and individual features such as kitchen and bathroom layouts, doors, windows, garages and elevational treatments may vary from time to time. Consequently these particulars should be treated as general guidance only and do not constitute a contract, part of a contract or a warranty.

[B] - Boiler

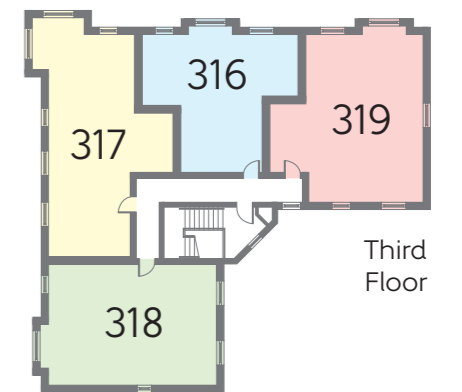
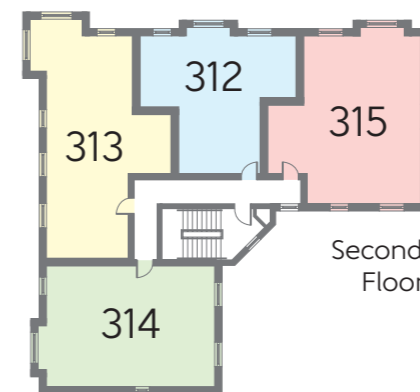
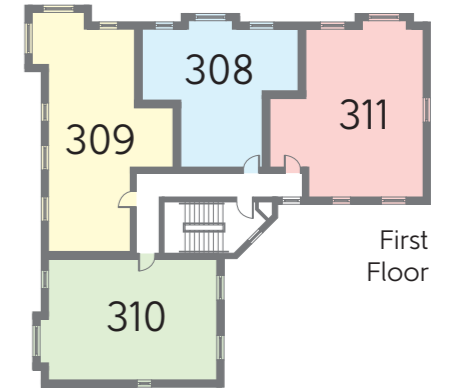
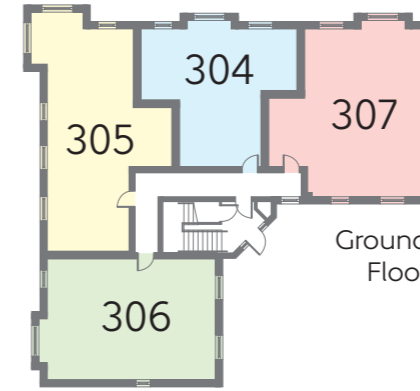
Furniture arrangements are for illustrative purposes only. Items are not included, nor to scale.

The items shown in this key may be subject to change, and positions could vary from those indicated on this floorplan. Please refer to Sales Advisor for details of your selected plot. Computer generated image shown overleaf. External finishes, landscaping and configuration may vary from plot to plot. Please refer to Sales Advisor for further details. All dimensions are approximate and should not be used for carpet sizes, appliance spaces or furniture. We operate a policy of continuous improvement and individual features such as kitchen and bathroom layouts, doors, windows, garages and elevational treatments may vary from time to time. Consequently these particulars should be treated as general guidance only and do not constitute a contract, part of a contract or a warranty.

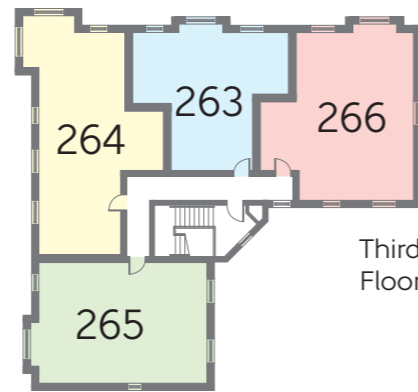
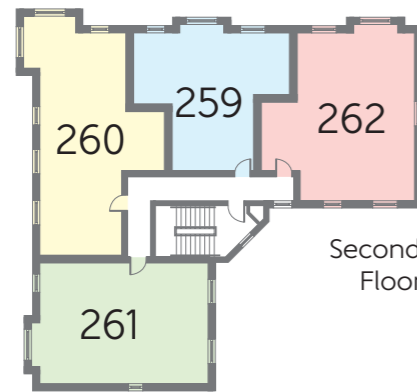
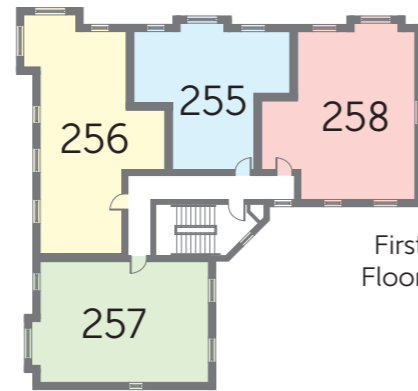
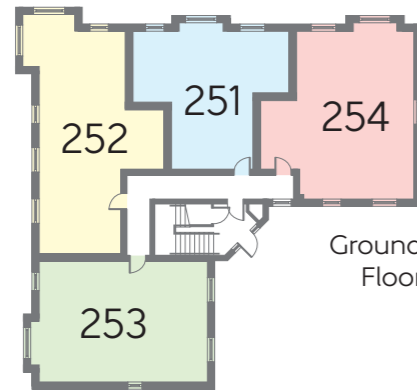
Block 1



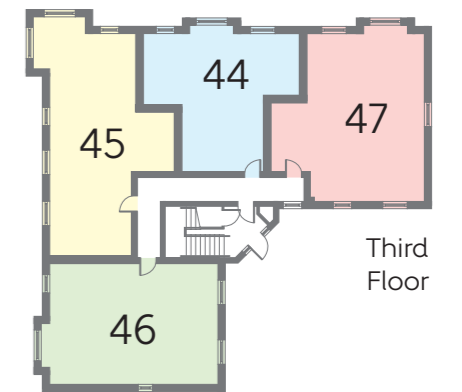
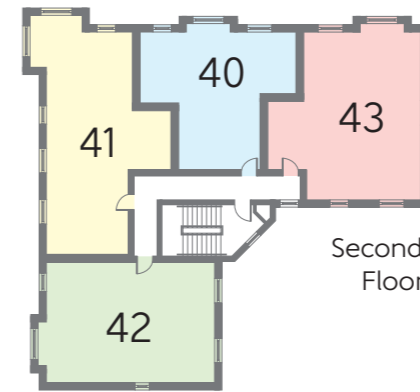
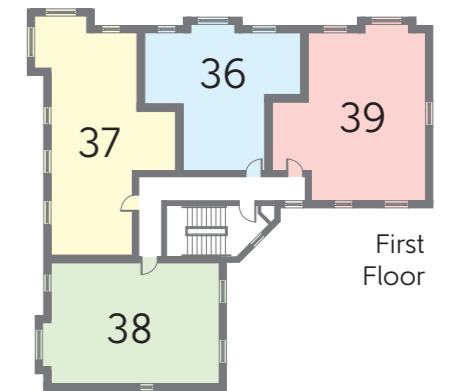
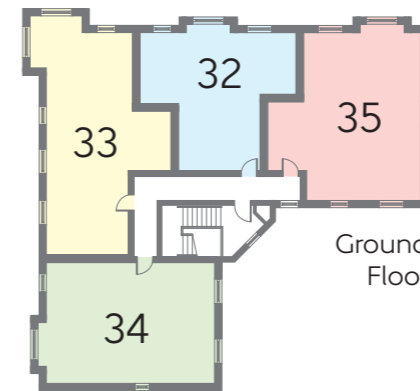
Block 6



Block 4



Block 9



Bellway



5 STAR HOME BUILDER
CUSTOMER SATISFACTION



YOUR NEW HOME MEANS A LOT TO YOU. OUR FIVE-STAR RATING SHOWS HOW MUCH IT MEANS TO US.

Based on results from the annual National New Homes Survey, the HBF rewards those builders who reach or exceed elevated levels of customer satisfaction and service excellence with the ultimate accolade of five stars. The findings come directly from you the buyer, and the survey is impartial, independent, and validated by a UK university.

Five stars means 90% or more customers say they would recommend us to a friend. So it means a great deal to us, and, with a five star rating being above the industry average, it also means that you can buy a Bellway home with confidence.

