

Barton Quarter Phase 2

ONE AND TWO BEDROOM MAISONNETTES



Barton Quarter Phase 2
A development of new homes in Horwich

Bellway



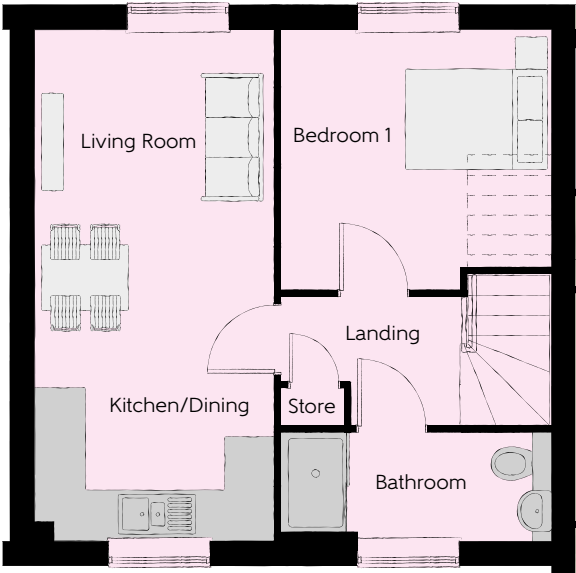
The Rydal - Plot 162 (Ground Floor, 1 bedroom)

Living Room/ Kitchen/Dining	5.939mx 4.848m	19'2" x 15'9"
Bedroom	3.847m x 2.993m	12'6" x 9'8"
Bathroom	2.238m x 1.913m	7'3" x 6'2"
Total area	49 sq.m	527 sq. ft.

Furniture arrangements are for illustrative purposes only. Items are not included, nor to scale.

The items shown in this key may be subject to change, and positions could vary from those indicated on this floorplan. Please refer to Sales Advisor for details of your selected plot. External finishes and landscaping may vary. Please refer to Sales Advisor for further details. All dimensions are approximate and should not be used for carpet sizes, appliance spaces or furniture. We operate a policy of continuous improvement and individual features such as kitchen and bathroom layouts, doors, windows, garages and elevational treatments may vary from time to time. Consequently these particulars should be treated as general guidance only and do not constitute a contract, part of a contract or a warranty.

02240-11/08/22



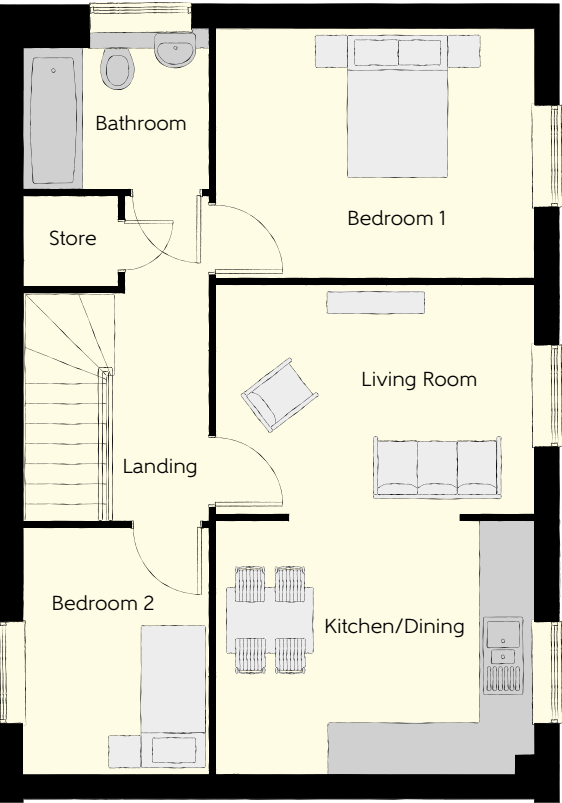
The York - Plot 164 (First Floor, 1 bedroom)

Living Room/ Kitchen/Dining	6.198m x 2.884m	20'3" x 9'5"
Bedroom	3.270m x 3.140mm (max)	10'7" x 9'4" (max)
Bathroom	3.270m x 1.290m	10'7" x 4'2" (max)
Total area	43.64 sq.m	469 sq. ft.

Furniture arrangements are for illustrative purposes only. Items are not included, nor to scale.

The items shown in this key may be subject to change, and positions could vary from those indicated on this floorplan. Please refer to Sales Advisor for details of your selected plot. External finishes and landscaping may vary. Please refer to Sales Advisor for further details. All dimensions are approximate and should not be used for carpet sizes, appliance spaces or furniture. We operate a policy of continuous improvement and individual features such as kitchen and bathroom layouts, doors, windows, garages and elevational treatments may vary from time to time. Consequently these particulars should be treated as general guidance only and do not constitute a contract, part of a contract or a warranty.

02240-11/08/22



The Derby - Plot 163 (First Floor, 2 bedroom)

Living Room/ Kitchen/Dining	5.939m x 3.847m	12'8" x 9'1"
Bedroom 1	3.847m x 2.993m	12'6" x 9'8"
Bedroom 2	2.975m x 2.238m	9'4" x 7'3"
Bathroom	2.238m x 1.913m	7'3" x 6'2"
Total area	60.54 sq.m	651 sq. ft.

How to find us

