

The Plane 4 bedroom home



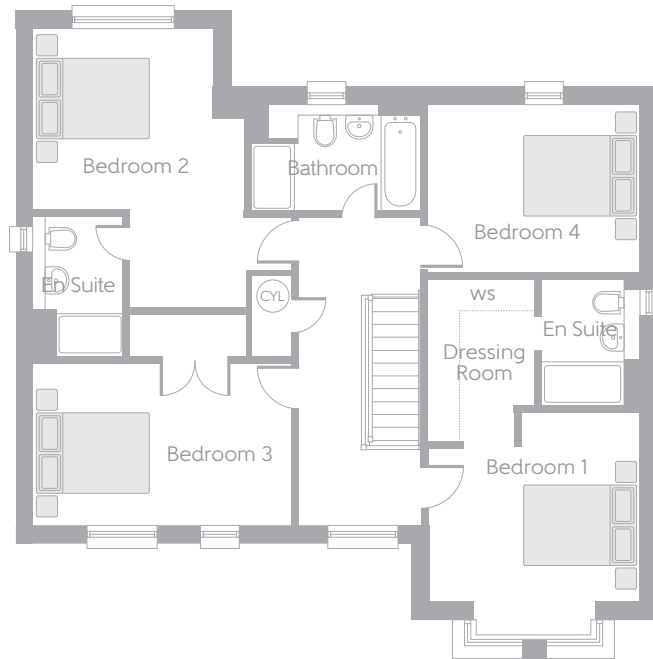
Ground floor comprises

Kitchen, utility, dining room, family room, living room, garage, cloakroom and store.

First floor comprises

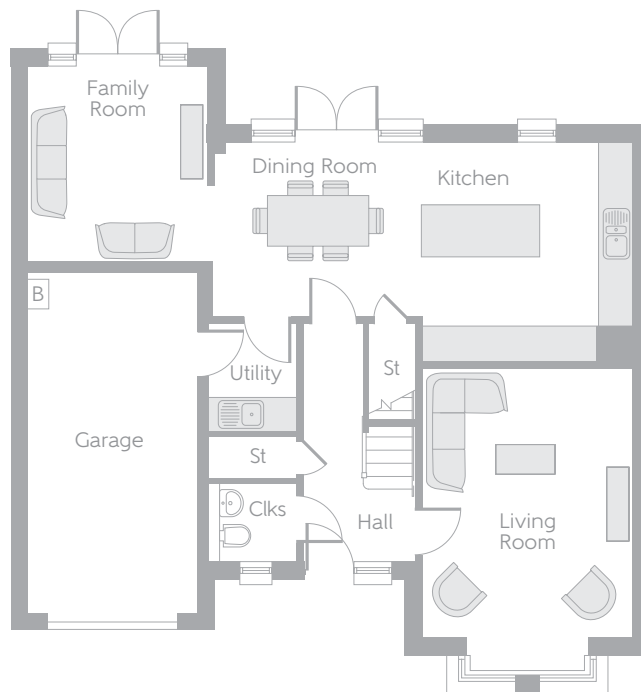
*Master bedroom with en suite, bedroom 2 with en suite,
2 further bedrooms and a bathroom.*

First Floor



Bedroom 1	4.084m (max)	x 3.725m (max)	13'5" (max)	x 12'3" (max)
Bedroom 2	4.932m (max)	x 3.765m (max)	16'2" (max)	x 12'4" (max)
Bedroom 3	4.611m (max)	x 2.912m (max)	15'2" (max)	x 9'7" (max)
Bedroom 4	3.789m (max)	x 2.952m (max)	12'5" (max)	x 9'8" (max)

Ground Floor



Kitchen	3.890m (max)	x 3.728m (max)	12'9" (max)	x 12'3" (max)
Dining Room	3.746m (max)	x 3.090m (max)	12'4" (max)	x 10'2" (max)
Family Room	3.480m (max)	x 3.255m (max)	11'5" (max)	x 10'8" (max)
Living Room	5.427m (max)	x 3.728m (max)	17'10" (max)	x 12'3" (max)

B Boiler
 CYL Hot Water Cylinder
 Clks Cloakroom
 St Store
 ws Wardrobe Space (suggestion only, wardrobe not included)



Some items shown in this key may be subject to change, and positions could vary from those indicated on this floorplan. Please refer to Sales Advisor for details of your selected plot. Computer generated image shown overleaf. External finishes, landscaping and configuration may vary from plot to plot. Please refer to Sales Advisor for further details. All dimensions are approximate and should not be used for carpet sizes, appliance spaces, or furniture. Furniture not to scale and all positions are indicative. We operate a policy of continuous improvement and individual features such as kitchen and bathroom layouts, doors, windows and elevational treatments may vary from time to time. Consequently these particulars should be treated as general guidance only and do not constitute a contract, part of a contract or a warranty.