

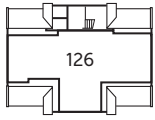
Newlands Court



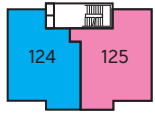
Bellway Homes Limited (Kent Division)
30 Tower View, Kings Hill,
West Malling, Kent ME19 4UY

Telephone: 01732 879750
www.bellway.co.uk

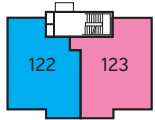
Bellway



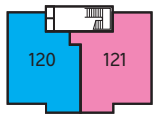
Third Floor



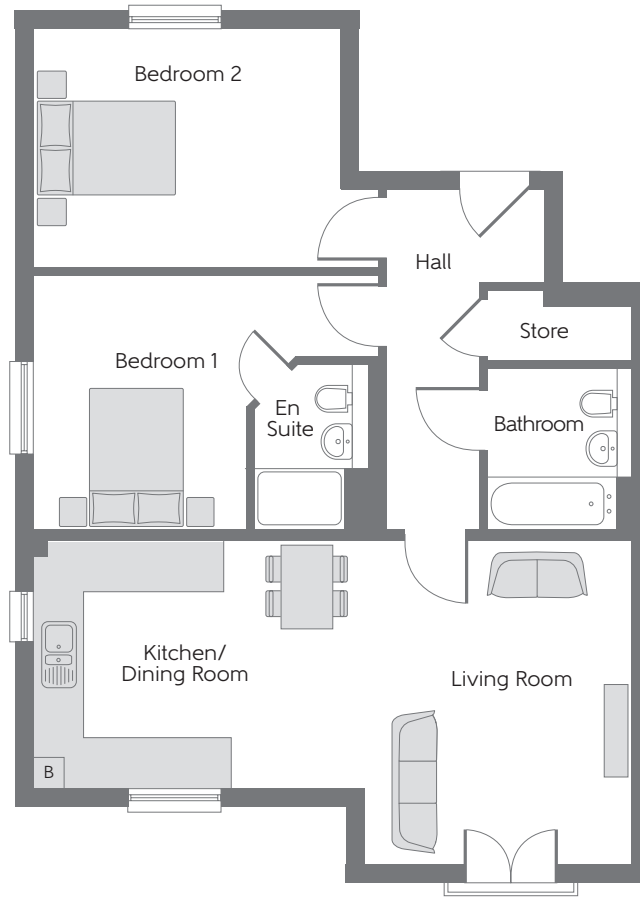
Second Floor



First Floor

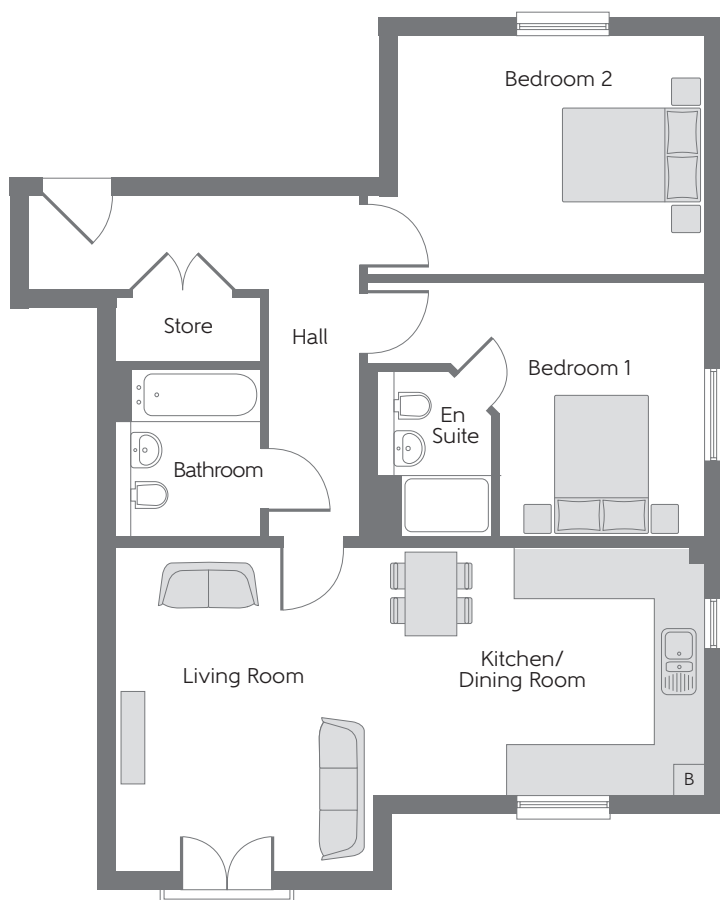


Ground Floor



The Bailey
Apartments 120, 122 & 124

Kitchen/Dining Room	3.230m x 2.600m	10'7" x 8'6"
Living Room	5.277m x 4.243m (max) (max)	17'4" x 13'11" (max) (max)
Bedroom 1	3.352m x 2.822m (max) (min)	11'0" x 9'3" (max) (min)
En Suite	2.190m x 1.490m (max) (max)	7'2" x 4'11" (max) (max)
Bedroom 2	4.037m x 3.151m (max) (min)	13'3" x 10'4" (max) (min)
Bathroom	2.125m x 1.900m (max) (max)	7'0" x 6'3" (max) (max)



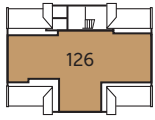
The Fisher
Apartments 121, 123 & 125

Kitchen/Dining Room	3.230m x 2.600m	10'7" x 8'6"
Living Room	5.157m x 4.243m (max) (max)	16'11" x 13'11" (max) (max)
Bedroom 1	3.352m x 2.703m (max) (min)	11'0" x 8'10" (max) (min)
En Suite	2.190m x 1.490m	7'2" x 4'11"
Bedroom 2	4.037m x 3.151m (max) (max)	13'3" x 10'4" (max) (max)
Bathroom	2.210m x 1.900m	7'3" x 6'3"

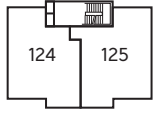
B - Boiler

Furniture arrangements are for illustrative purposes only. Items are not included, nor to scale.

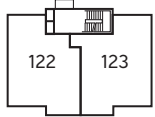
The items shown in this key may be subject to change, and positions could vary from those indicated on this floorplan. Please refer to Sales Advisor for details of your selected plot. Computer generated image shown overleaf. External finishes, landscaping and configuration may vary from plot to plot. Please refer to Sales Advisor for further details. All dimensions are approximate and should not be used for carpet sizes, appliance spaces or furniture. We operate a policy of continuous improvement and individual features such as kitchen and bathroom layouts, doors, windows, garages and elevational treatments may vary from time to time. Consequently these particulars should be treated as general guidance only and do not constitute a contract, part of a contract or a warranty.



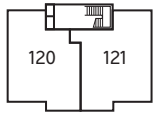
Third Floor



Second Floor



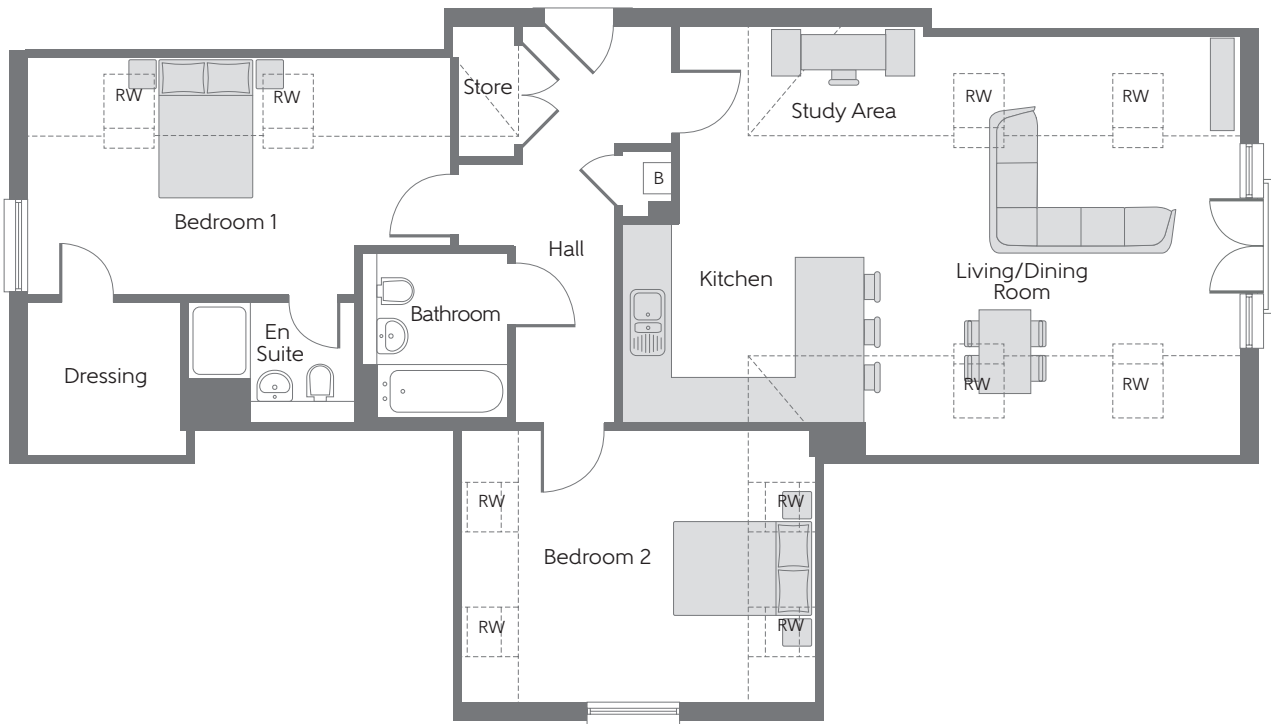
First Floor



Ground Floor

**The Portland
Apartment 126**

Kitchen	5.154m x 3.225m <small>(max) (max)</small>	16'11" x 10'7" <small>(max) (max)</small>
Living/Dining Room	5.392m x 4.844m	17'8" x 15'11"
Bedroom 1	5.584m x 3.062m <small>(max) (max)</small>	18'4" x 10'1" <small>(max) (max)</small>
En Suite	2.200m x 1.515m <small>(max) (max)</small>	7'3" x 5'0" <small>(max) (max)</small>
Dressing	2.007m x 1.943m	6'7" x 6'5"
Bedroom 2	4.521m x 3.590m	14'10" x 11'9"
Bathroom	2.170m x 1.910m	7'1" x 6'3"



B - Boiler --- - Reduced Head Height **RW** - Roof Window

Furniture arrangements are for illustrative purposes only. Items are not included, nor to scale.

The items shown in this key may be subject to change, and positions could vary from those indicated on this floorplan. Please refer to Sales Advisor for details of your selected plot. Computer generated image shown overleaf. External finishes, landscaping and configuration may vary from plot to plot. Please refer to Sales Advisor for further details. All dimensions are approximate and should not be used for carpet sizes, appliance spaces or furniture. We operate a policy of continuous improvement and individual features such as kitchen and bathroom layouts, doors, windows, garages and elevational treatments may vary from time to time. Consequently these particulars should be treated as general guidance only and do not constitute a contract, part of a contract or a warranty. 210381/03/21.