

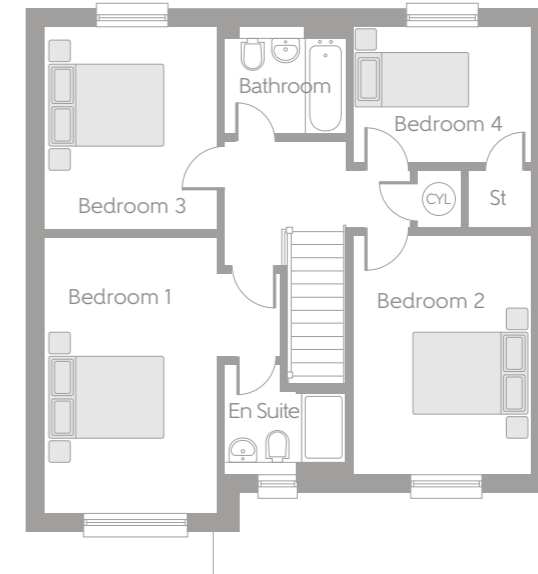
The Maple 4-bedroom home



Ground floor comprises
Kitchen with dining/family room, living room, garage and cloakroom.

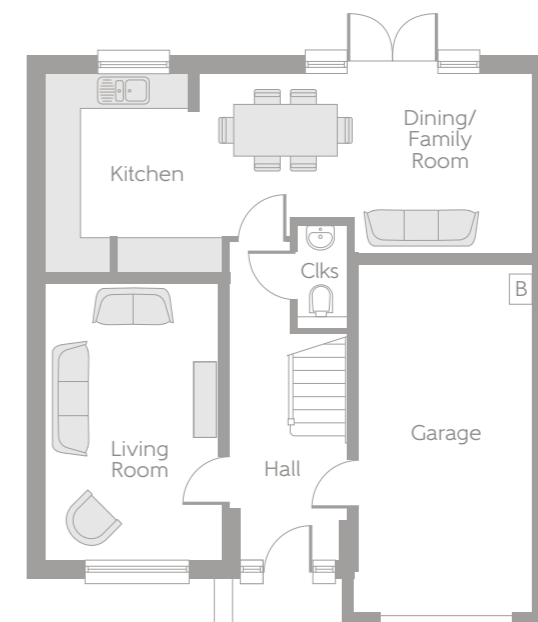
First floor comprises
Master Bedroom with en suite, 3 further bedrooms and bathroom.

First Floor



Bedroom 1	4.830m x 4.100m (max)	15'10" x 13'6" (max)
Bedroom 2	4.192m x 3.122m	13'9" x 10'3"
Bedroom 3	3.532m x 3.058m	11'7" x 10'0"
Bedroom 4	3.137m x 2.412m	10'4" x 7'11"

Ground Floor



Living Room	4.850m x 3.056m	15'11" x 10'0"
Dining/Family Room	5.775m x 3.112m (max)	19'0" x 10'3" (max)
Kitchen	3.450m x 3.118m (max)	11'4" x 10'3" (max)

B Boiler CYL Hot Water Cylinder Clks Cloakroom St Store

Some items shown in this key may be subject to change, and positions could vary from those indicated on this floorplan. Please refer to Sales Advisor for details of your selected plot. Computer generated image shown overleaf. External finishes, landscaping and configuration may vary from plot to plot. Please refer to Sales Advisor for further details. All dimensions are approximate and should not be used for carpet sizes, appliance spaces, or furniture. Furniture not to scale and all positions are indicative. We operate a policy of continuous improvement and individual features such as kitchen and bathroom layouts, doors, windows, garages and elevational treatments may vary from time to time. Consequently these particulars should be treated as general guidance only and do not constitute a contract, part of a contract or a warranty.