

The Voyager

FOUR BEDROOM HOME

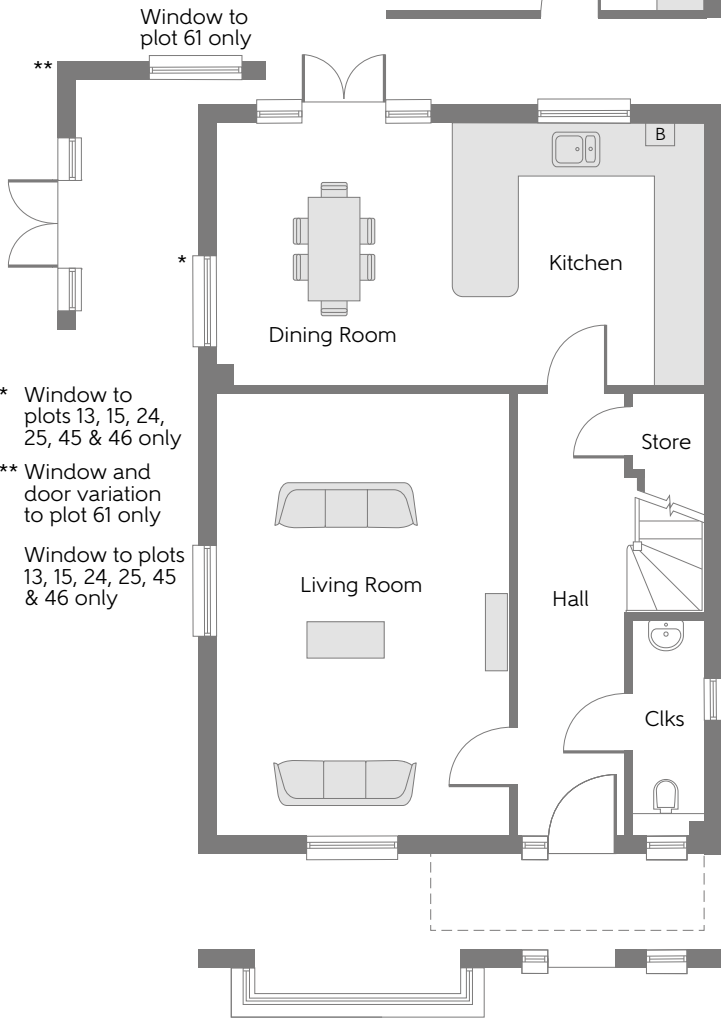
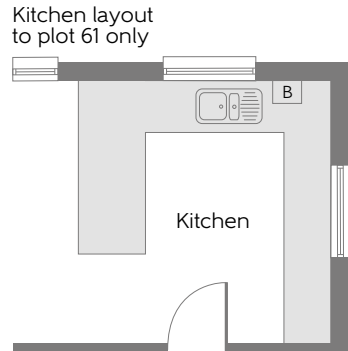


bellway.co.uk

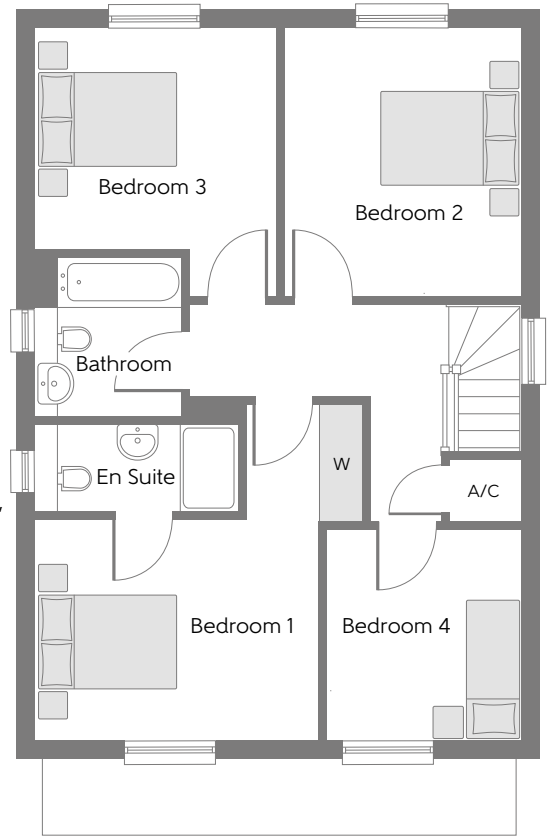
Bellway

First Floor

Bedroom 1	3.85m x 3.00m	12'8" x 9'10"
Bedroom 2	5.63m x 3.23m	18'6" x 10'7"
Bedroom 3	3.28m x 2.98m	10'9" x 9'9"
Bedroom 4	2.86m x 2.67m	9'5" x 8'9"



Window omitted to plots 16, 19, 20, 21, 22, 23, 26, 28, 49-50, 76, 90-92, 96-101 & 139



Ground Floor

Kitchen	3.53m x 3.40m	11'7" x 11'2"
Dining Room	3.53m x 3.20m	11'7" x 10'6"
Living Room	5.97m x 3.96m	19'7" x 13'0"

Window to plots 23, 26 & 45 only

Porch to plots 12, 19, 22, 51 & 100 only

Clks - Cloakroom B - Boiler A/C - Airing Cupboard W - Fitted Wardrobe

Furniture arrangements are for illustrative purposes only. Items are not included, nor to scale.

The items shown in this key may be subject to change, and positions could vary from those indicated on this floorplan. Please refer to Sales Advisor for details of your selected plot. Computer generated image shown overleaf. External finishes, landscaping and configuration may vary from plot to plot. Please refer to Sales Advisor for further details. All dimensions are approximate and should not be used for carpet sizes, appliance spaces or furniture. We operate a policy of continuous improvement and individual features such as kitchen and bathroom layouts, doors, windows, garages and elevational treatments may vary from time to time. Consequently these particulars should be treated as general guidance only and do not constitute a contract, part of a contract or a warranty.