

# THE HERRINGTON

PLOT 139



# THE HERRINGTON

## PLOT 139



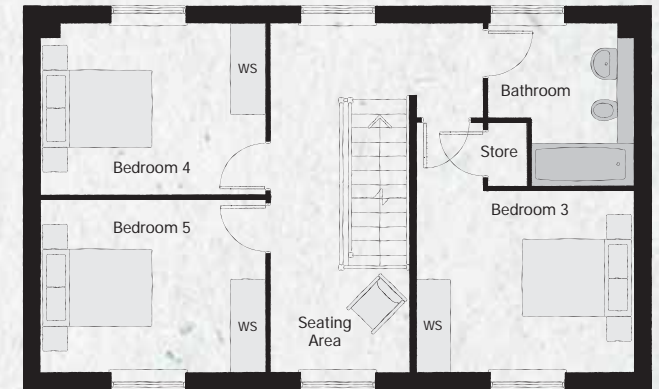
### GROUND FLOOR

Kitchen/Dining	8.948m x 4.422m	29'4" x 14'6"
Living Room	3.669m x 5.798m	12'0" x 19'0"
Dining Room	3.632m x 3.023m	11'11" x 9'11"
Utility	2.341m x 2.289m	7'8" x 7'6"
Cloakroom	1.228m x 2.289m	4'0" x 7'6"



### FIRST FLOOR

Bedroom 1	3.632m x 4.000m	11'11" x 13'1"
En Suite	3.632m x 1.735m	11'11" x 5'8"
Bedroom 2	3.669m x 4.152m	12'0" x 13'7"
En Suite 2	2.744m x 1.583m	9'0" x 5'2"



### SECOND FLOOR

Bedroom 3	3.682m x 4.147m	12'1" x 13'7"
Bedroom 4	3.719m x 2.862m	12'2" x 9'5"
Bedroom 5	3.719m x 2.872m	12'2" x 9'5"
Bathroom	2.463m x 2.708m	8'1" x 8'11"

Some items shown in this key may be subject to change, and positions could vary from those indicated on this floorplan. Please refer to Sales Advisor for details of your selected plot. External finishes, landscaping and configuration may vary from plot to plot. Please refer to Sales Advisor for further details. All dimensions are approximate and should not be used for carpet sizes, appliance spaces or furniture. Furniture not to scale and all positions are indicative. Kitchen layouts are subject to change. We operate a policy of continuous improvement and individual features such as kitchen and bathroom layouts, doors, windows, garages and elevational treatments may vary from time to time. Consequently these particulars should be treated as general guidance only and do not constitute a contract, part of a contract or a warranty.