

# Beaumont House

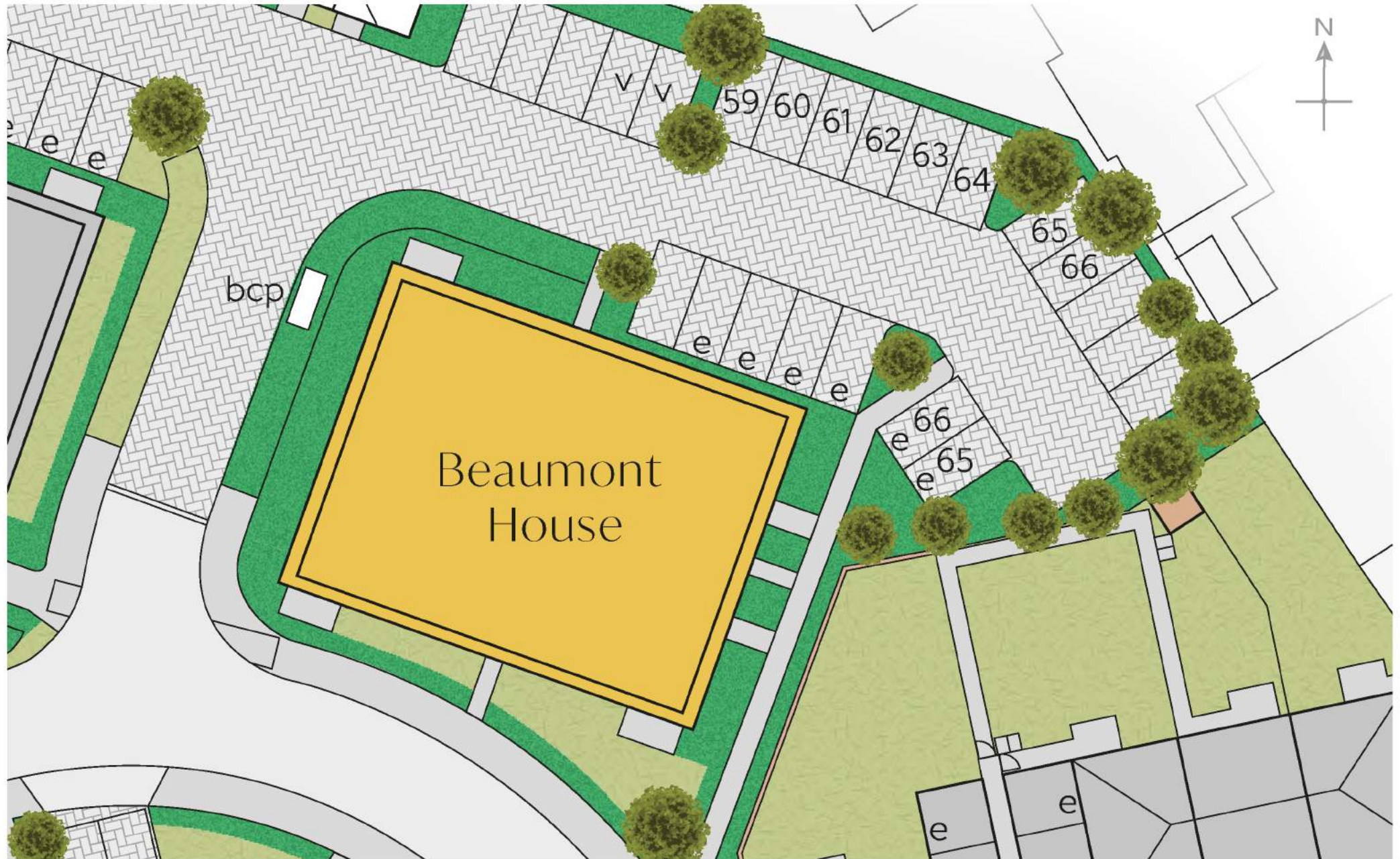
ONE AND TWO BEDROOM APARTMENTS

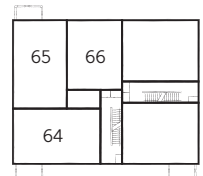


Indigo Park  
A development of new homes in Chichester

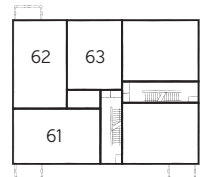
**Bellway**



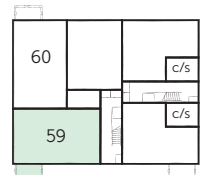




Second Floor



First Floor



Ground Floor

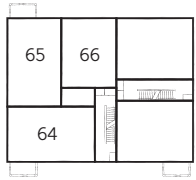
### The Chaberton - Apartment 59

Kitchen/Living/ Dining Area	6.248m x 5.109m <small>(max) (max)</small>	20'6" x 16'9" <small>(max) (max)</small>
Bedroom 1	3.848m x 3.728m <small>(max) (max)</small>	12'8" x 12'3" <small>(max) (max)</small>
Bedroom 2	3.073m x 2.717m	10'1" x 8'11"

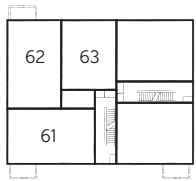
B Boiler    W Fitted Wardrobe

**Furniture arrangements are for illustrative purposes only. Items are not included, nor to scale.**

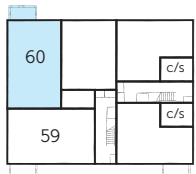
The items shown in this key may be subject to change, and positions could vary from those indicated on this floorplan. Please refer to Sales Advisor for details of your selected plot. External finishes and landscaping may vary. Please refer to Sales Advisor for further details. All dimensions are approximate and should not be used for carpet sizes, appliance spaces or furniture. We operate a policy of continuous improvement and individual features such as kitchen and bathroom layouts, doors, windows, garages and elevational treatments may vary from time to time. Consequently these particulars should be treated as general guidance only and do not constitute a contract, part of a contract or a warranty. c/s Cycle store, bcp Bin Collection Point, v Visitor Parking.



Second Floor



First Floor



Ground Floor



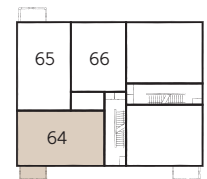
## The Pourri - Apartment 60

Kitchen/Living/ Dining Area	6.041m x 5.060m <small>(max) (max)</small>	16'7" x 10'0" <small>(max) (max)</small>
Bedroom 1	4.186m x 2.792m <small>(max) (max)</small>	13'9" x 9'2" <small>(max) (max)</small>
Bedroom 2	2.792m x 2.778m	9'2" x 9'1"

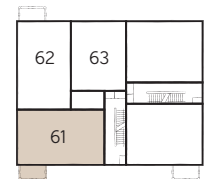
**B** Boiler    **W** Fitted Wardrobe

**Furniture arrangements are for illustrative purposes only. Items are not included, nor to scale.**

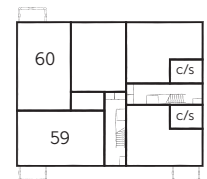
The items shown in this key may be subject to change, and positions could vary from those indicated on this floorplan. Please refer to Sales Advisor for details of your selected plot. External finishes and landscaping may vary. Please refer to Sales Advisor for further details. All dimensions are approximate and should not be used for carpet sizes, appliance spaces or furniture. We operate a policy of continuous improvement and individual features such as kitchen and bathroom layouts, doors, windows, garages and elevational treatments may vary from time to time. Consequently these particulars should be treated as general guidance only and do not constitute a contract, part of a contract or a warranty. c/s Cycle store.



Second Floor



First Floor



Ground Floor

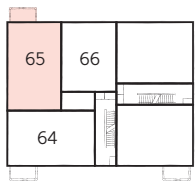
### The Ventoux - Apartments 61 & 64

Kitchen/Living/ Dining Area	6.248m x 5.109m <small>(max) (max)</small>	20'6" x 16'9" <small>(max) (max)</small>
Bedroom 1	3.848m x 3.728m <small>(max) (max)</small>	12'8" x 12'3" <small>(max) (max)</small>
Bedroom 2	3.073m x 2.717m	10'1" x 8'11"

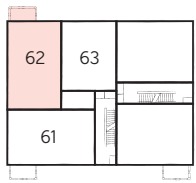
B Boiler    W Fitted Wardrobe

**Furniture arrangements are for illustrative purposes only. Items are not included, nor to scale.**

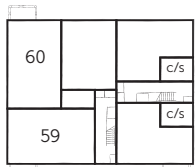
The items shown in this key may be subject to change, and positions could vary from those indicated on this floorplan. Please refer to Sales Advisor for details of your selected plot. External finishes and landscaping may vary. Please refer to Sales Advisor for further details. All dimensions are approximate and should not be used for carpet sizes, appliance spaces or furniture. We operate a policy of continuous improvement and individual features such as kitchen and bathroom layouts, doors, windows, garages and elevational treatments may vary from time to time. Consequently these particulars should be treated as general guidance only and do not constitute a contract, part of a contract or a warranty. c/s Cycle store.



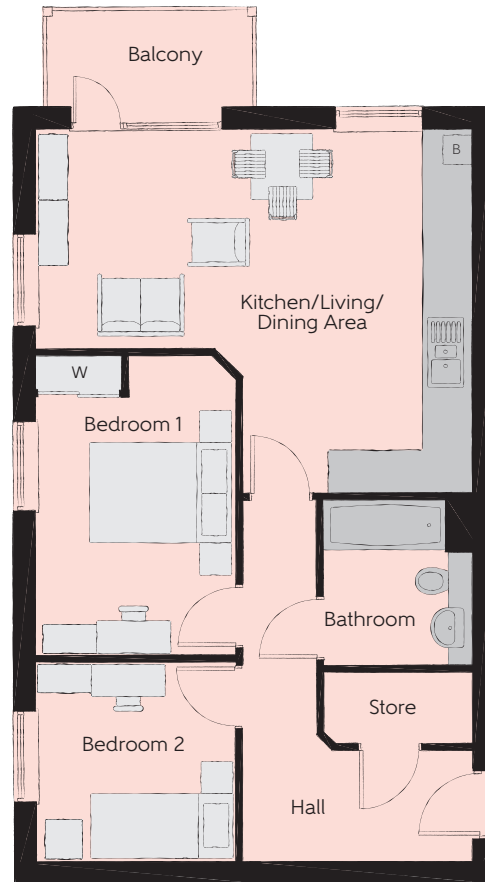
Second Floor



First Floor



Ground Floor



## The Colombar - Apartments 62 & 65

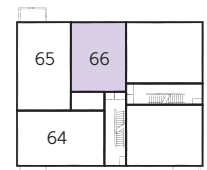
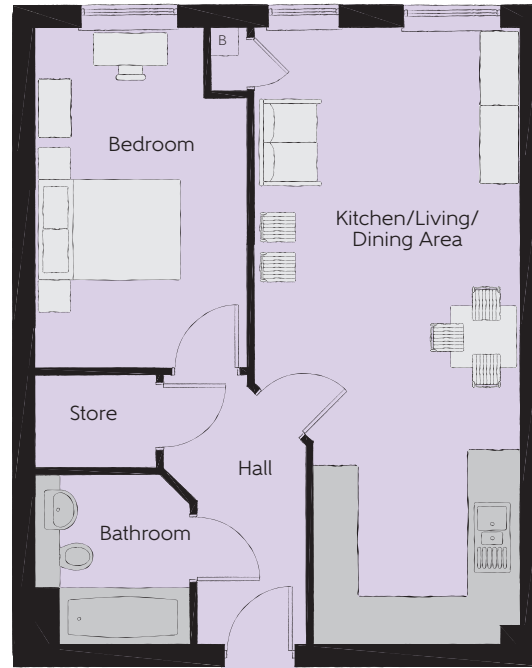
Kitchen/Living/ Dining Area	6.041m x 5.060m (max) (max)	16'7" x 10'0" (max) (max)
Bedroom 1	4.186m x 2.792m (max) (max)	13'9" x 9'2" (max) (max)
Bedroom 2	2.792m x 2.778m	9'2" x 9'1"

 Boiler     Fitted Wardrobe

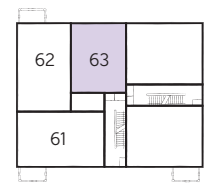
**Furniture arrangements are for illustrative purposes only. Items are not included, nor to scale.**

The items shown in this key may be subject to change, and positions could vary from those indicated on this floorplan. Please refer to Sales Advisor for details of your selected plot. External finishes and landscaping may vary. Please refer to Sales Advisor for further details. All dimensions are approximate and should not be used for carpet sizes, appliance spaces or furniture. We operate a policy of continuous improvement and individual features such as kitchen and bathroom layouts, doors, windows, garages and elevational treatments may vary from time to time. Consequently these particulars should be treated as general guidance only and do not constitute a contract, part of a contract or a warranty. c/s Cycle store.

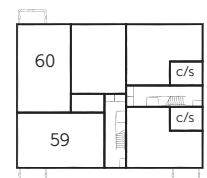




Second Floor



First Floor



Ground Floor

### The Tabor - Apartments 63 & 66

Kitchen/Living/ Dining Area	7.948m x 3.425m <small>(max)</small>	26'1" x 11'3" <small>(max)</small>
Bedroom	4.391m x 2.727m	14'5" x 8'11"

**B** Boiler

**Furniture arrangements are for illustrative purposes only. Items are not included, nor to scale.**

The items shown in this key may be subject to change, and positions could vary from those indicated on this floorplan. Please refer to Sales Advisor for details of your selected plot. External finishes and landscaping may vary. Please refer to Sales Advisor for further details. All dimensions are approximate and should not be used for carpet sizes, appliance spaces or furniture. We operate a policy of continuous improvement and individual features such as kitchen and bathroom layouts, doors, windows, garages and elevational treatments may vary from time to time. Consequently these particulars should be treated as general guidance only and do not constitute a contract, part of a contract or a warranty. c/s Cycle store.

# How to find us

---



Bellway Homes Limited (South London)  
1st Floor, Regent House, 1-3 Queensway, Redhill, Surrey RH1 1QT  
Telephone: 01737 785 500 bellway.co.uk

