

Watling Apartments

TWO BEDROOM APARTMENTS



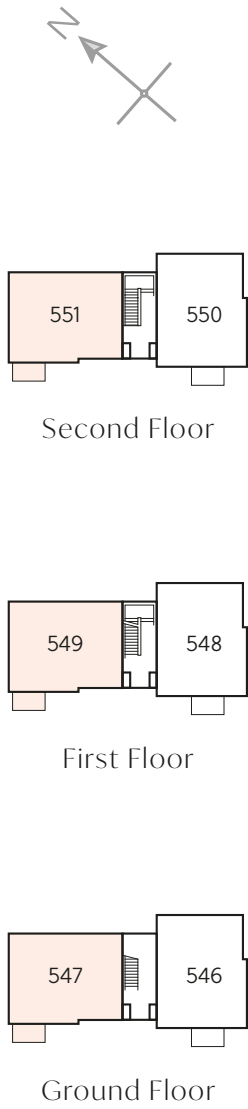
THE
ARTISAN
COLLECTION



Whitehouse Gardens
A development of new homes in Whitehouse, Milton Keynes

Bellway





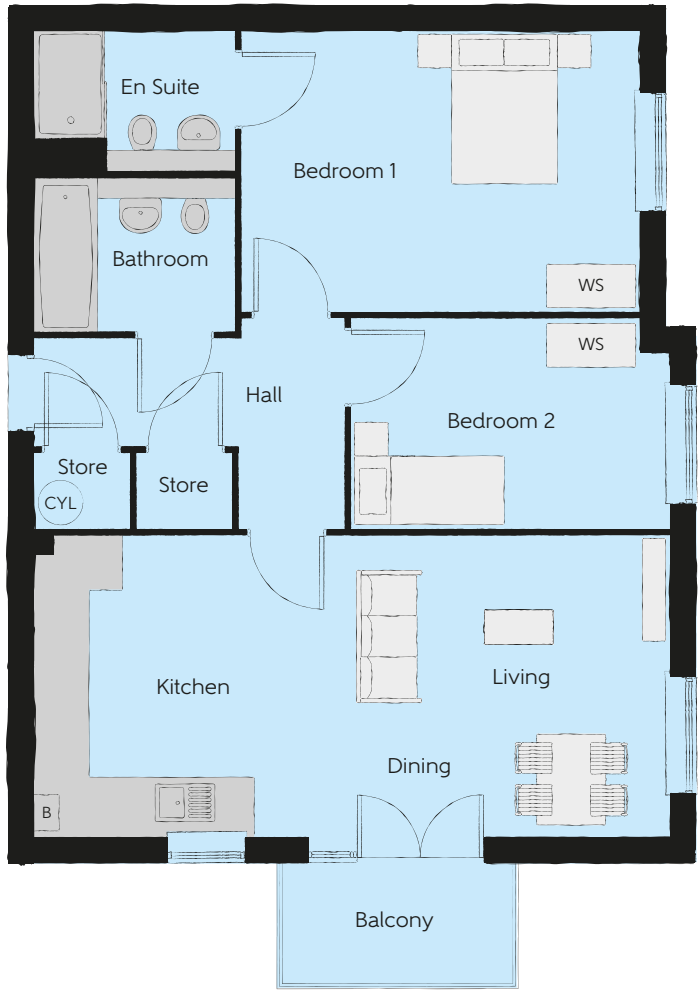
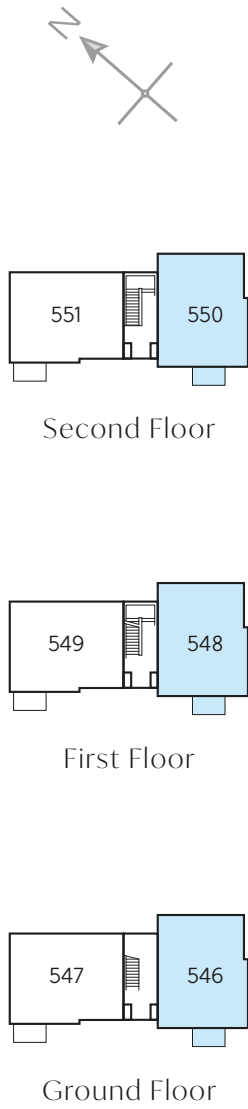
The Milne – Plots 547, 549 & 551

Kitchen/Living/Dining	6.49m x 4.08m	21'3" x 13'4"
Bedroom 1	3.70m x 3.35m	12'1" x 10'11"
Bedroom 2	3.50m x 2.44m	11'5" x 8'0"
Bathroom	2.22m x 1.70m	7'3" x 5'6"
Total area	62.7 sq. m.	675sq. ft.

a/c – airing cupboard WS – Wardrobe Space (suggestion only, wardrobe not included) CYL – Hot Water Cylinder

Furniture arrangements are for illustrative purposes only. Items are not included, nor to scale.

The items shown in this key may be subject to change, and positions could vary from those indicated on this floorplan. Please refer to Sales Advisor for details of your selected plot. External finishes and landscaping may vary. Please refer to Sales Advisor for further details. All dimensions are approximate and should not be used for carpet sizes, appliance spaces or furniture. We operate a policy of continuous improvement and individual features such as kitchen and bathroom layouts, doors, windows, garages and elevational treatments may vary from time to time. Consequently these particulars should be treated as general guidance only and do not constitute a contract, part of a contract or a warranty.



The Brickhill – Plots 546, 548 & 550

Kitchen/Living/Dining	7.10m x 3.33m	23'5" x 10'11"
Bedroom 1	4.42m x 3.12m	14'6" x 10'2"
Bedroom 2	3.55m x 2.22m	11'7" x 7'3"
Bathroom	2.24m x 1.67m	7'4" x 5'7"
Total area	62.6 sq. m.	674 sq. ft.

a/c – airing cupboard WS – Wardrobe Space (suggestion only, wardrobe not included) CYL – Hot Water Cylinder

Furniture arrangements are for illustrative purposes only. Items are not included, nor to scale.

The items shown in this key may be subject to change, and positions could vary from those indicated on this floorplan. Please refer to Sales Advisor for details of your selected plot. External finishes and landscaping may vary. Please refer to Sales Advisor for further details. All dimensions are approximate and should not be used for carpet sizes, appliance spaces or furniture. We operate a policy of continuous improvement and individual features such as kitchen and bathroom layouts, doors, windows, garages and elevational treatments may vary from time to time. Consequently these particulars should be treated as general guidance only and do not constitute a contract, part of a contract or a warranty.

Specification

FINISHES		1 Bedroom Apartments	2 Bedroom Apartments
Entrance Doors	Pre Finished Fire Rated Solid Core Door	•	•
Ceilings	Crown White Matt Emulsion	•	•
Walls	Crown White Matt Emulsion	•	•
Window Cills	White Gloss MDF	•	•
Skirting	White Gloss 94x14 MDF Grooved & Chamfered	•	•
Architrave	White Gloss 69x18 MDF Grooved & Chamfered	•	•
Internal Doors	White Pre Finished Vertical Panel Internal Doors	•	•
Ironmongery	Chrome SRI00 Door Furniture	•	•
KITCHEN			
Carcass	Premium Grade 18mm thk Colour Matched Carcass	•	•
Frontals	Bellway Band B options ^	•	•
Units	Frontal Matching Table Ends	•	•
Worktops	40mm Square Edge Worktops with upstand	•	•
Kitchen Sink	Leisure Linear Bowl & Half SS Sink & TCAF3 Tap (inc Sink Liner)	•	•
Appliances Oven	Zanussi Single Oven ZOB343X	•	•
Appliances Hob	Zanussi 4 Burner Gas Hob ZGH62414X5 & SS Splashback	•	•
Appliances Extractor	Cooker Hood Extractor LFC316X (recirculating)	•	•
Appliances Fridge Freezer	Fridge Freezer Space Only	•	•
Appliance Dishwasher	Removeable Unit (inc Feed & Waste) **	•	•
Appliance Washing Machine	Washing Machine Space within A/C (inc Feed & Waste)	•	•
WET ROOMS			
Bathroom - WC	ROCA DEBBA WC with Concealed Cistern & PL1 Flush Plate ‡	•	•
Bathroom - Basin	Roca Debba 520 Semi Recessed WHB no Pedestal M4(2)	•	•
Bathroom - Bath	Roca OSLO Acrylic Bath & Rigid Bath Panel	•	•
Bathroom - Brassware	Bristan PISA Chrome Bath & Basin Mixer Taps	•	•
Bathroom - Shower	Over Bath Mira MINIMAL Single Thermostatic Shower †††	•	•
Bathroom - Tiling	1/2 Height Tiling (Band 2) to Wet Walls with Box Edged Brushed Trim * †	•	•
En-Suite - WC	ROCA CLARA WC with Concealed Cistern & PL2 Flush Plate ‡		•
En-Suite - Basin	Roca Debba 520 Semi Recessed WHB no Pedestal M4(2)		•
En-Suite - Brassware	Bristan PISA Chrome Basin Mixer Taps		•
En-Suite - Shower Tray	Mira FLIGHT Low Shower Tray with Mira ELEVATE Enclosure ††		•
En-Suite - Shower	Mira MINIMAL Single Thermostatic Shower ***		•
En-Suite - Tiling	1/2 Height Tiling (Band 2) to Wet Walls with Box Edged Brushed Trim †		•

MECHANICAL		1 Bedroom Apartments	2 Bedroom Apartments
Hot Water	Hot Water Heat Pump Cylinder	•	•
Controls	Dimplex Panel Heaters Controls	•	•
Radiators	Electric Panel Heaters	•	•
Towel Warmers	Flat Chrome to Bathroom (electric)	•	•
Ventilation	Mechanical Extract Fans (system 3)	•	•
ELECTRICS			
Home Working	Dedicated Power, USB & Data Points	•	•
Safety - Heat	Heat Detector DET ^^	•	•
Safety - Fire	Optical Smoke Detectors LD2 D2 APP	•	•
Consumer Unit	Wylex Consumer Unit	•	•
Sockets & Switches	Electrium CASA White Fittings	•	•
USB Locations	Kitchen, Living Room & Bedroom 1 ONLY	•	•
Shaver / Toothbrush Point	Bathroom ONLY	•	•
Lighting	Pendant Fitting to Habitable Rooms	•	•
Lighting - Kitchen Under Unit	1st Fix Wiring Only	•	•
Lighting - Bathroom & En-Suites	White Recessed Spot Lights	•	•
Communications - TV	TV Point to Living Room & Bedroom 1	•	•
Communications - Voice	Telephone Point to Living Room	•	•
Communications - Data	Cat 6 Network Point to Living Room & Bedroom 1	•	•
Broadband	Ultrafast Fibre Connectivity Openreach	•	•
EXTERNALS & MISC			
Shared Parking Areas	Bitmac Black ‡‡	•	•
Balcony	Balcony ^^	•	•
Build Method	Masonry ‡‡‡	•	•

* full height around bath where shower provided as standard
** at build stage
*** flow regulator fitted to bath mixer if serving single thermostatic shower & fed via combination boiler
† full height to shower enclosure
†† housetype dependent - liaise with sales executive
††† inc MIRA bath screen 11863.004
‡ inc soft close mechanism seat
‡‡ plot dependent
‡‡‡ plot specific, refer site layout
^ soft close mechanism to doors & drawers
^^ where shown on layouts

Information correct at time of going to print. In the event of product discontinuation or issues with stock availability Bellway will always fit a suitable alternative.

10 year  warranty

A home as individual as you are with Additions

Every Bellway home comes with high quality fittings as standard, but to add that personal touch you can also choose to upgrade from our range of options to make sure your new home feels distinctly different.

Most important of all, because we recognise that you want your new home to reflect your personal taste from day one, we will make sure that all your Additions choices are expertly fitted and finished by the time you move in.

CHOOSE FROM OUR RANGE OF ADDITIONS OPTIONS COVERING:

KITCHENS

- Integrated or freestanding washer/dryer
- Integrated fridge/freezer
- Integrated or freestanding dishwasher
- Integrated or freestanding washing machine
- Upgrade to composite worktops
- Double oven
- Upgrade hob
- Integrated microwave

FLOORING

- Choose from carpets, vinyl or laminate

TILING

- Full and half height tiling
- Comprehensive upgrade options

PLUMBING

- Heated towel rail

SECURITY

- Intruder alarms
- Security lights

ELECTRICAL

- Additional sockets
- Additional switches
- Chrome sockets
- Chrome switches
- Under-unit lighting
- Shaver socket
- Recessed lighting
- BT and TV points

MISCELLANEOUS

- Turf
- Wardrobes



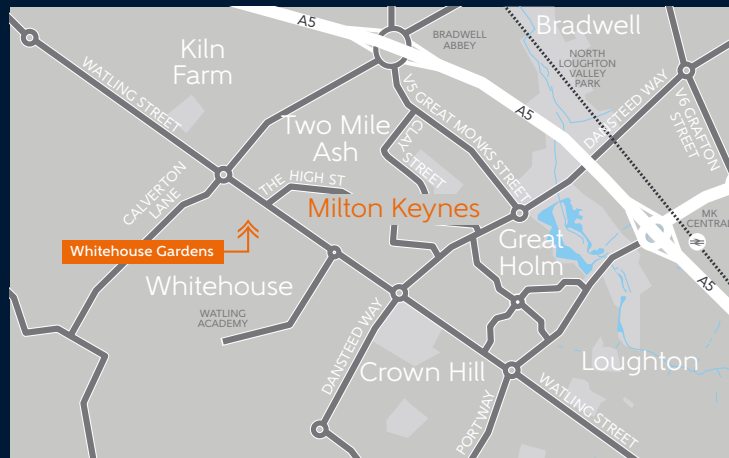
Although we make every effort to ensure that as many Additions choices as possible are available to you, not every development offers all the range shown. Please be aware that orders can only be accepted up to certain stages of the construction process. Therefore we recommend that you consult our Sales Advisor.

Rambouillet Drive
Whitehouse, Milton Keynes
MK8 1GT

Telephone: 01908 036 367
bellway.co.uk

/// football.blaze animator

what3words provides exact locations
so you know exactly where to find
our development.



Over **75**
YEARS of QUALITY
SINCE 1946



Bellway abides by the New
Homes Quality Code (NHQC),
an independent industry code
established to champion quality
new homes and deliver better
outcomes for customers.

Bellway