



THE  
ARTISAN  
COLLECTION

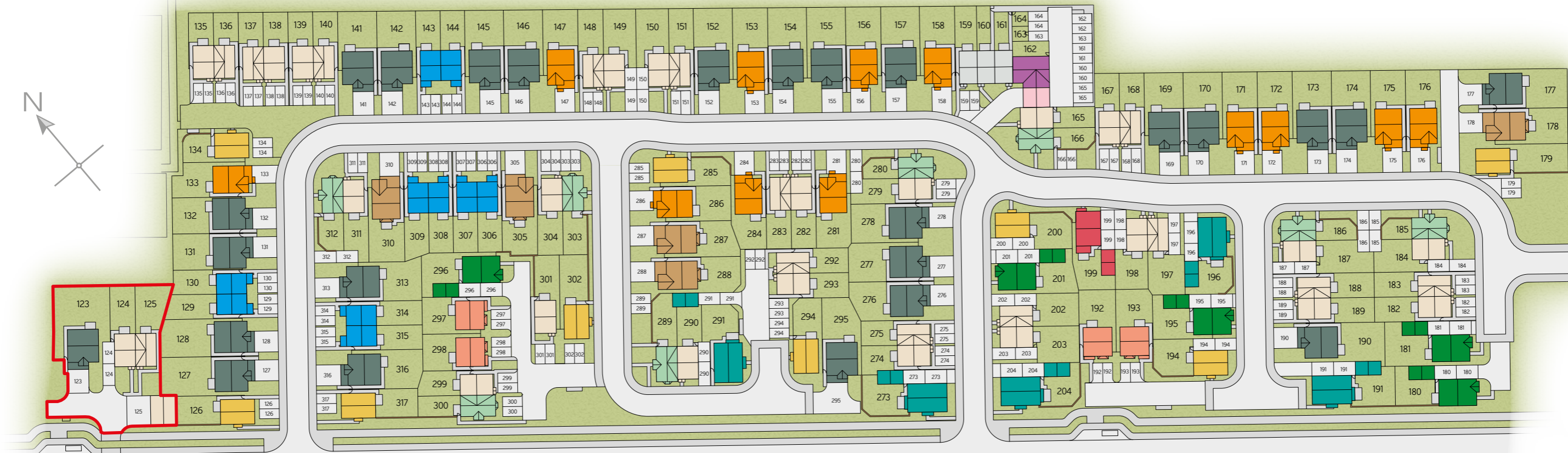
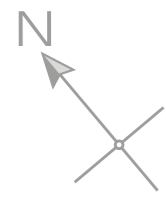
# Barton Quarter - Phase 2

DEVELOPMENT LAYOUT

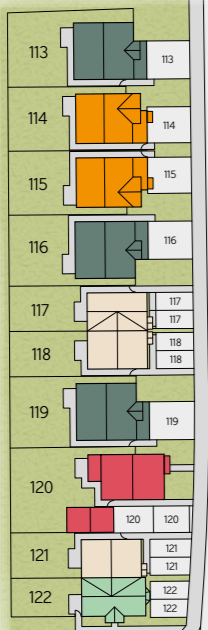


Chorley New Road  
Horwich  
BL6 5UE  
Telephone: 01204 802 063  
bellway.co.uk

**Bellway**






Phase 1B



**Material Finishes**  
 (TB) - Tudor Board Version  
**Key to plan**  
 s/s Sub station

The site plan is drawn to show the relative position of individual properties. NOT TO SCALE. This is a two dimensional drawing and will not show land contours and gradients, boundary treatments, landscaping or local authority street lighting. Footpaths subject to change. For details of individual properties and availability please refer to our Sales Advisor.

**4 Bedroom Homes**

-  **The Farrier**  
Plots 113, 116, 119, 123, 127, 128, 131, 132, 141, 142, 145, 148, 152, 154, 155, 157, 169, 170, 173, 174, 177, 190, 217, 234, 235, 238, 241, 276, 277, 278, 295, 313 & 316
-  **The Scrivener**  
Plots 180, 181, 195, 201, 256 & 296
-  **The Bowyer**  
Plots 191, 196, 204, 242, 272, 273 & 291


**3 Bedroom Homes**

-  **The Shoemaker**  
Plots 129, 130, 143, 144, 205, 206, 207, 208, 209, 210, 211, 215, 216, 220, 221, 226, 227, 228, 229, 232, 233, 239, 240, 252, 253, 265, 266, 306, 307, 308, 309, 314 & 315
-  **The Tailor**  
Plots 117, 118, 121, 124, 125, 135, 136, 137, 138, 139, 140, 148, 149, 150, 151, 165, 167, 168, 182, 183, 184, 187, 188, 189, 197, 198, 202, 203, 213, 217, 218, 237, 241, 242, 245, 246, 248, 249, 250, 251, 258, 259, 262, 263, 269, 270, 274, 275, 279, 282, 283, 290, 292, 293, 299, 301, 304, & 311
-  **The Thespian**  
Plots 122, 166, 185, 186, 212, 236, 280, 289, 300, 303, 312 & 318



-  **The Carver**  
Plots 192, 193, 297 & 298
-  **The Lymner**  
Plots 126, 134, 179, 194, 200, 218, 243, 247, 257, 264, 267, 285, 294, 302 & 317
-  **The Baxter**  
Plots 114, 115, 133, 147, 153, 156, 158, 171, 172, 175, 176, 214, 219, 222, 281, 284 & 286
-  **The Mason**  
Plots 120, 199, 223, 230, 231, 254, 255, 268 & 271
-  **The Sawyer**  
Plots 178, 287, 288, 305 & 310

**2 Bedroom Homes**

-  **The Joiner**  
Plots 159, 160, 161, 224, 225, 234, 235, 244, 260, 261, 319, 320, 321, 322, 325, & 326

**1 & 2 Bedroom Maisonettes**

-  **The Rydal**  
Plot 162
-  **The Derby**  
Plot 163
-  **The York**  
Plot 164
-  **Sales Area**

# Bellway



YOUR NEW HOME MEANS A LOT TO YOU.  
OUR FIVE-STAR RATING SHOWS HOW  
MUCH IT MEANS TO US.

Based on results from the annual National New Homes Survey, the HBF rewards those builders who reach or exceed elevated levels of customer satisfaction and service excellence with the ultimate accolade of five stars. The findings come directly from you the buyer, and the survey is impartial, independent, and validated by a UK university.

Five stars means 90% or more customers say they would recommend us to a friend. So it means a great deal to us, and, with a five star rating being above the industry average, it also means that you can buy a Bellway home with confidence.

